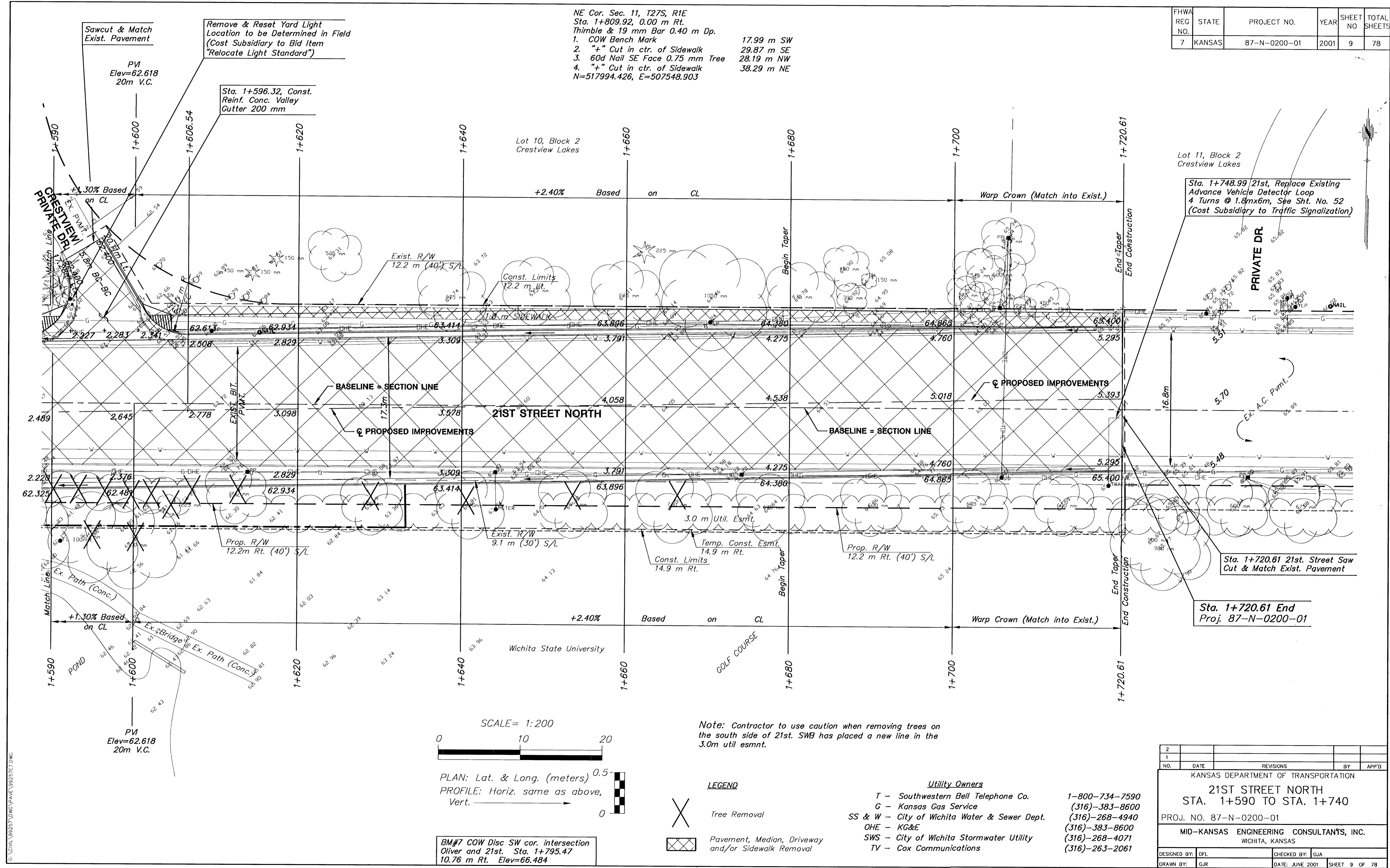


FHWA REG NO.	STATE	PROJECT NO.	YEAR	SHEET NO	TOTAL SHEETS
7	KANSAS	87-N-0200-01	2001	9	78

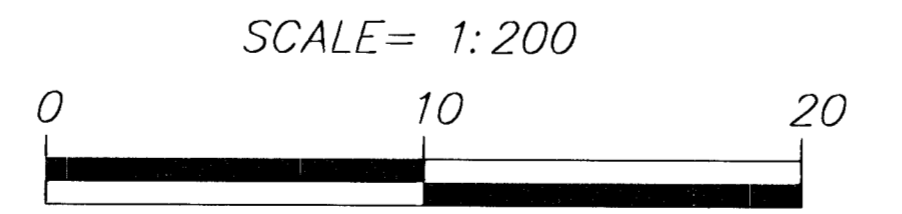
NE Cor. Sec. 11, T27S, R1E  
 Sta. 1+809.92, 0.00 m Rt.  
 Thimble & 19 mm Bar 0.40 m Dp.  
 1. COW Bench Mark 17.99 m SW  
 2. "+" Cut in ctr. of Sidewalk 29.87 m SE  
 3. 60d Nail SE Face 0.75 mm Tree 28.19 m NW  
 4. "+" Cut in ctr. of Sidewalk 38.29 m NE  
 N=517994.426, E=507548.903

DATE	BY



G:\CVL\199257\DMG\PAVE\98257E7.DWG Thu Oct 18 13:54:32 2001

G:\CVL\199257\DMG\PAVE\98257E7.DWG



PLAN: Lat. & Long. (meters) 0.5  
 PROFILE: Horiz. same as above, Vert. ———→ 0

BM#7 COW Disc SW cor. intersection  
 Oliver and 21st. Sta. 1+795.47  
 10.76 m Rt. Elev=66.484

Note: Contractor to use caution when removing trees on the south side of 21st. SWB has placed a new line in the 3.0m util esmnt.

- LEGEND**
- Tree Removal
  - Pavement, Median, Driveway and/or Sidewalk Removal

- Utility Owners**
- T - Southwestern Bell Telephone Co. 1-800-734-7590
  - G - Kansas Gas Service (316)-383-8600
  - SS & W - City of Wichita Water & Sewer Dept. (316)-268-4940
  - OHE - KG&E (316)-383-8600
  - SWS - City of Wichita Stormwater Utility (316)-268-4071
  - TV - Cox Communications (316)-263-2061

2					
1					
NO.	DATE	REVISIONS	BY	APP'D	
KANSAS DEPARTMENT OF TRANSPORTATION					
21ST STREET NORTH STA. 1+590 TO STA. 1+740					
PROJ. NO. 87-N-0200-01					
MID-KANSAS ENGINEERING CONSULTANTS, INC. WICHITA, KANSAS					
DESIGNED BY:	DFL	CHECKED BY:	GJA		
DRAWN BY:	GJR	DATE:	JUNE 2001	SHEET 9 OF 78	