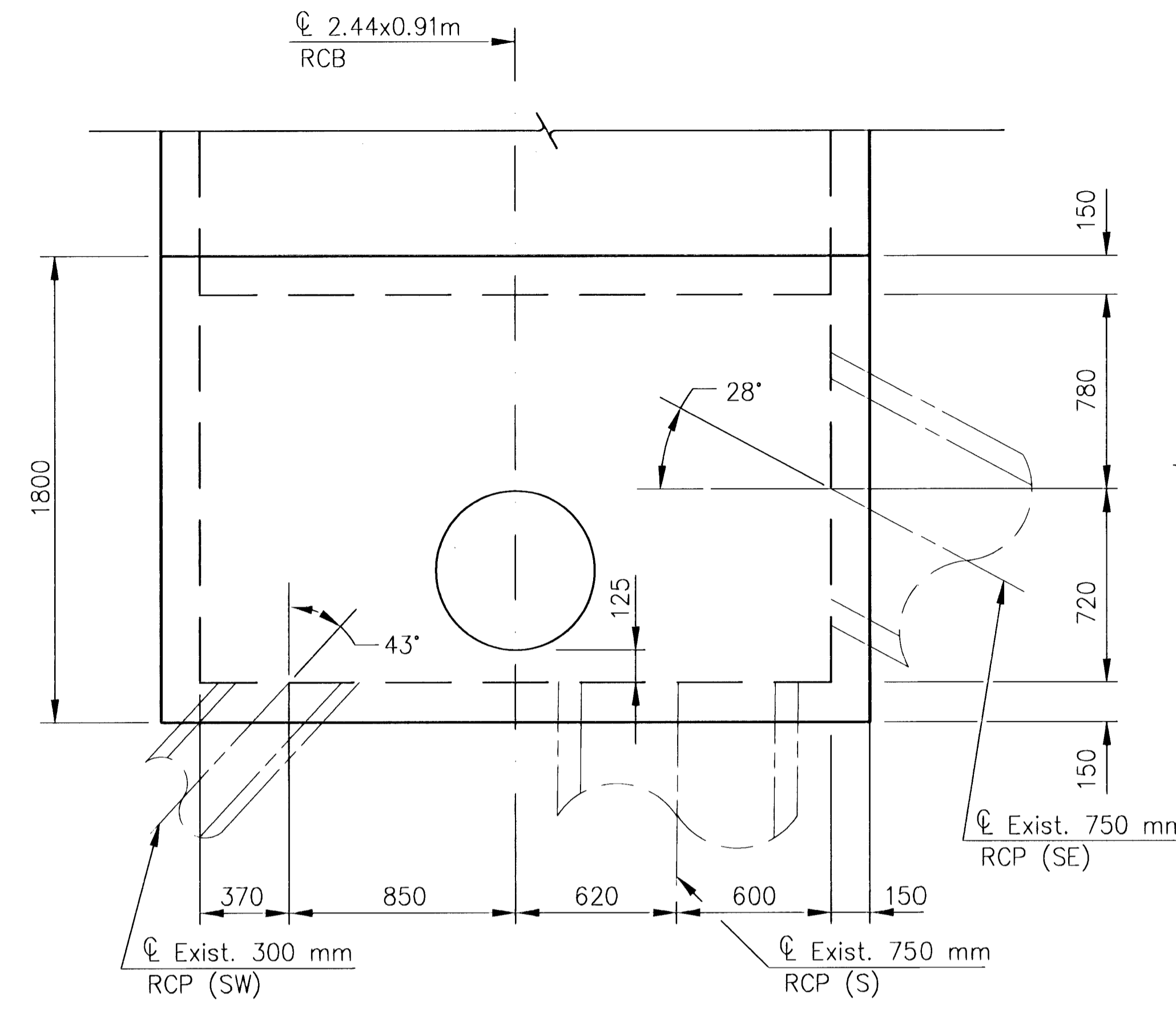
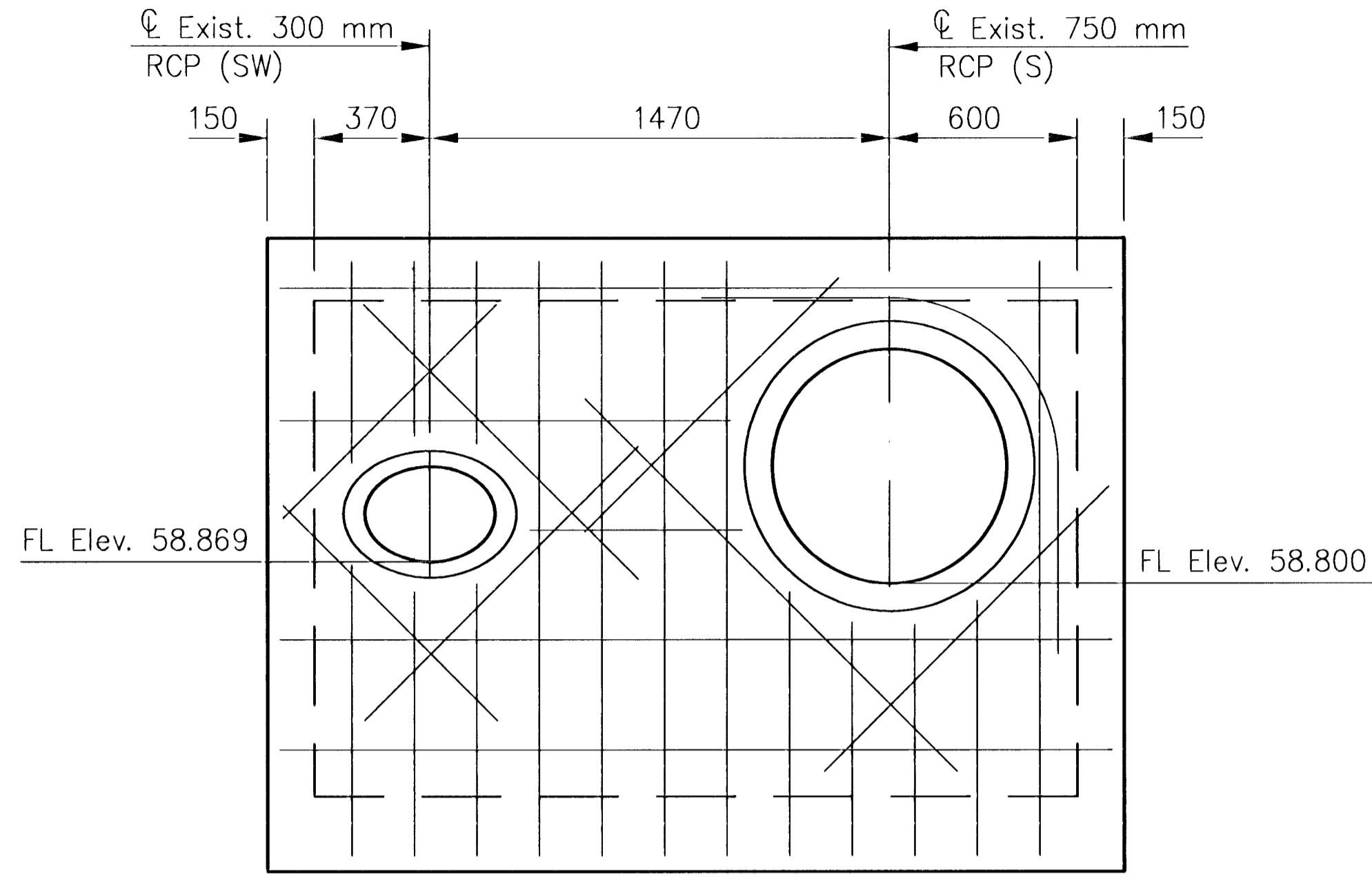


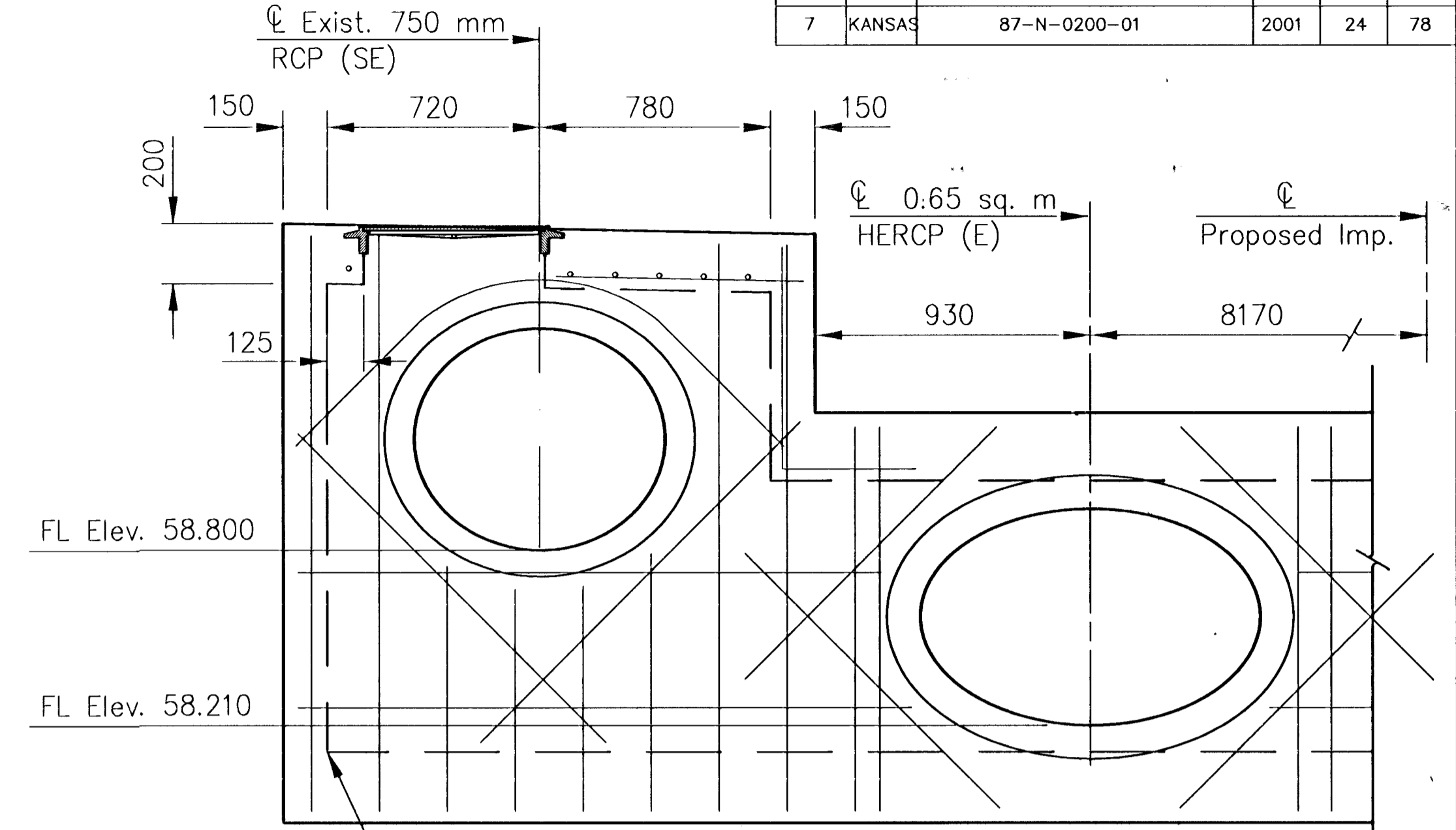
FHWA REGION NO.	STATE	PROJECT NO.	YEAR	SHEET NO.	TOTAL SHEETS
7	KANSAS	87-N-0200-01	2001	24	78



PLAN



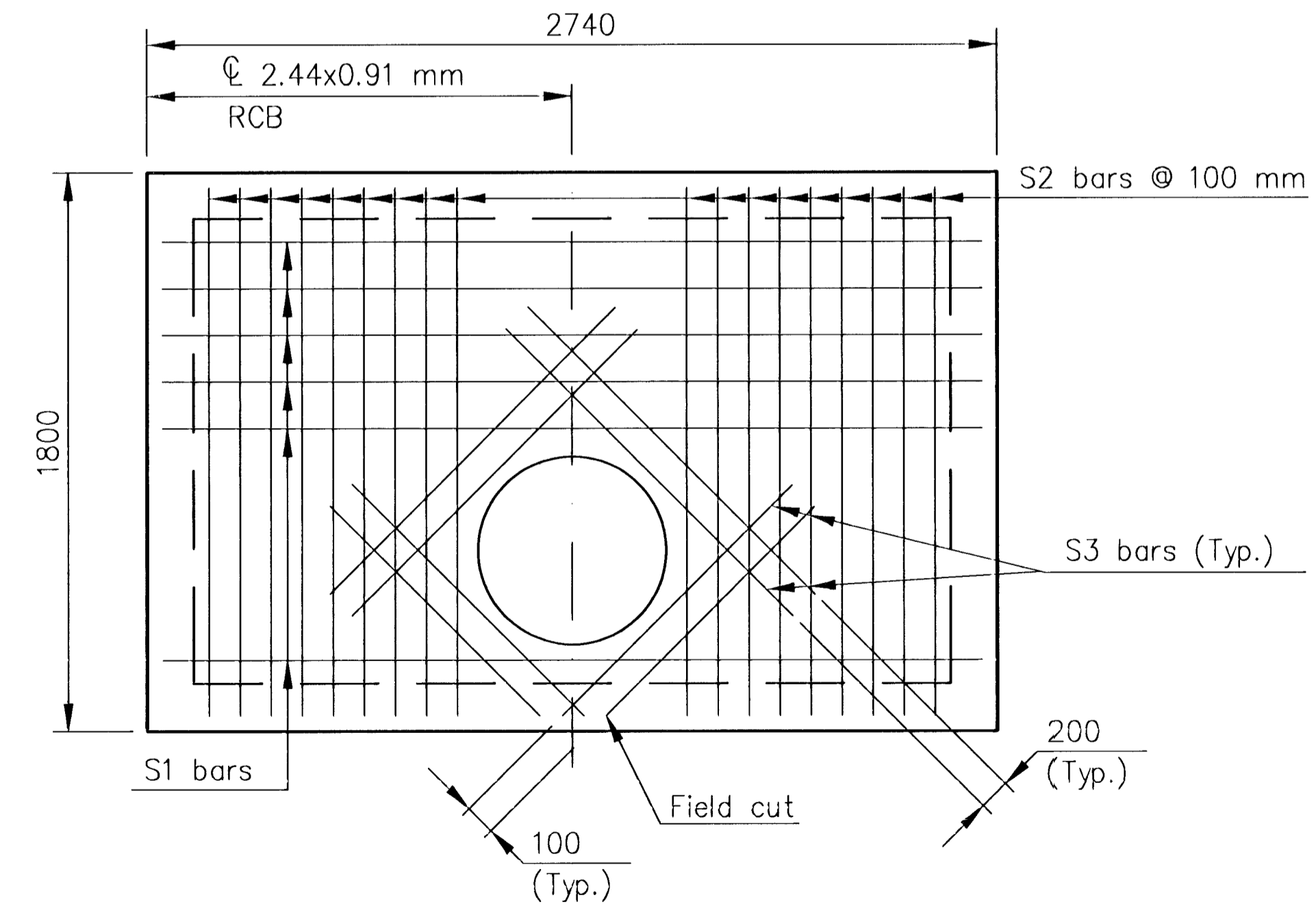
SOUTH ELEVATION



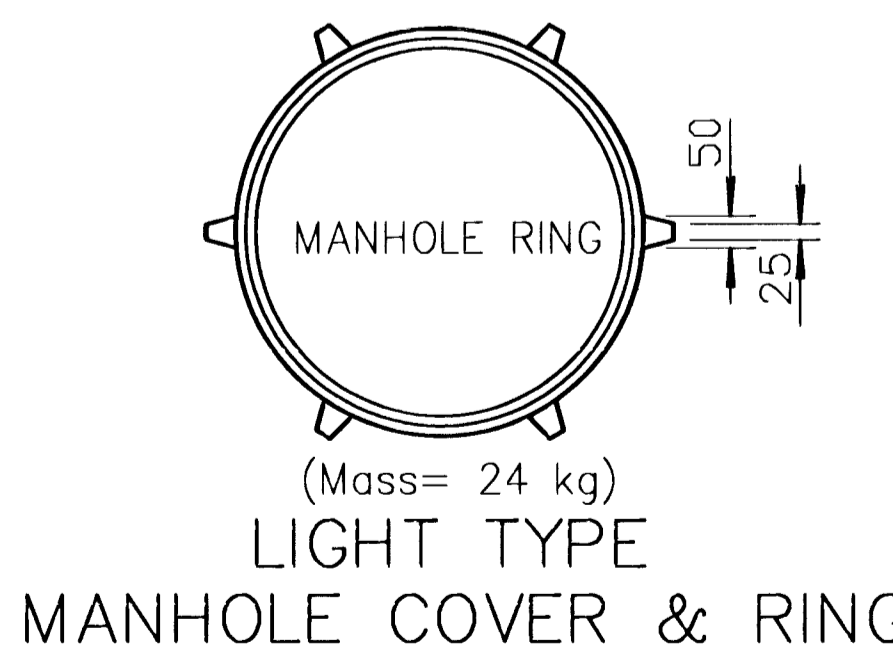
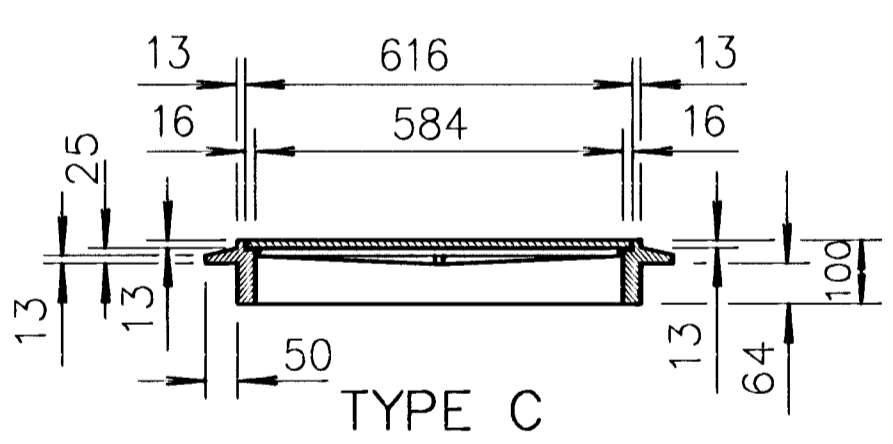
EAST ELEVATION

R.C.B WALL OPENING DETAILS FOR PIPES

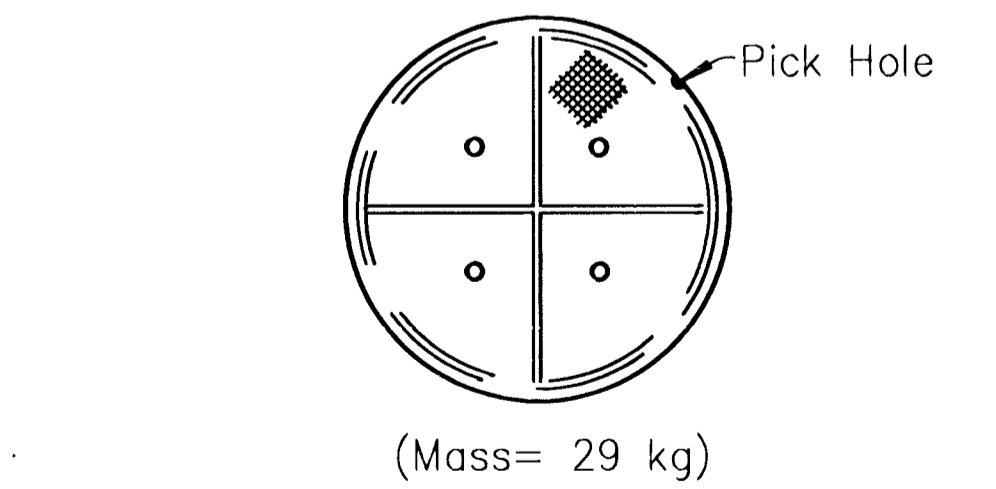
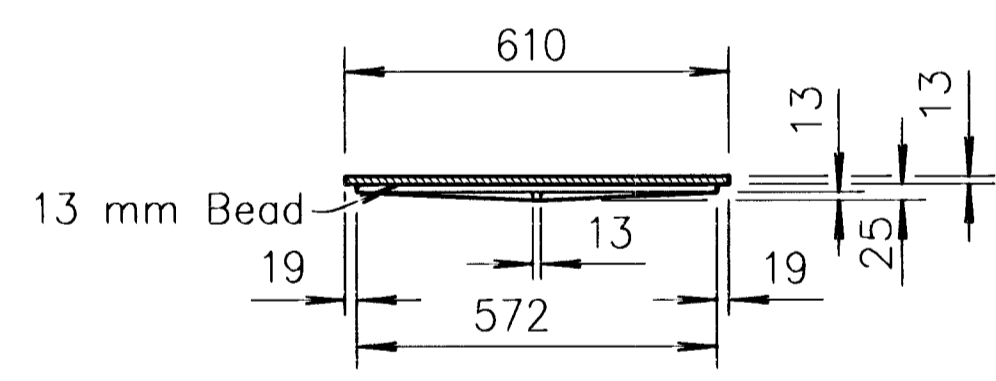
Diagonal reinforcing shall be added as shown in Detail "A" or "B" depending upon the pipe location in the R.C.B. wall. The reinforcing shall be bent as required to maintain 75mm clearance to the concrete face. This reinforcing shall not be paid for directly but shall be subsidiary to "Reinforcing Steel (GR. .420)".
 The R.C.B. reinforcing shall be cut or bent to provide 50mm clearance to the opening. No deduction in the reinforcing steel or concrete quantities has been made for the pipe openings.



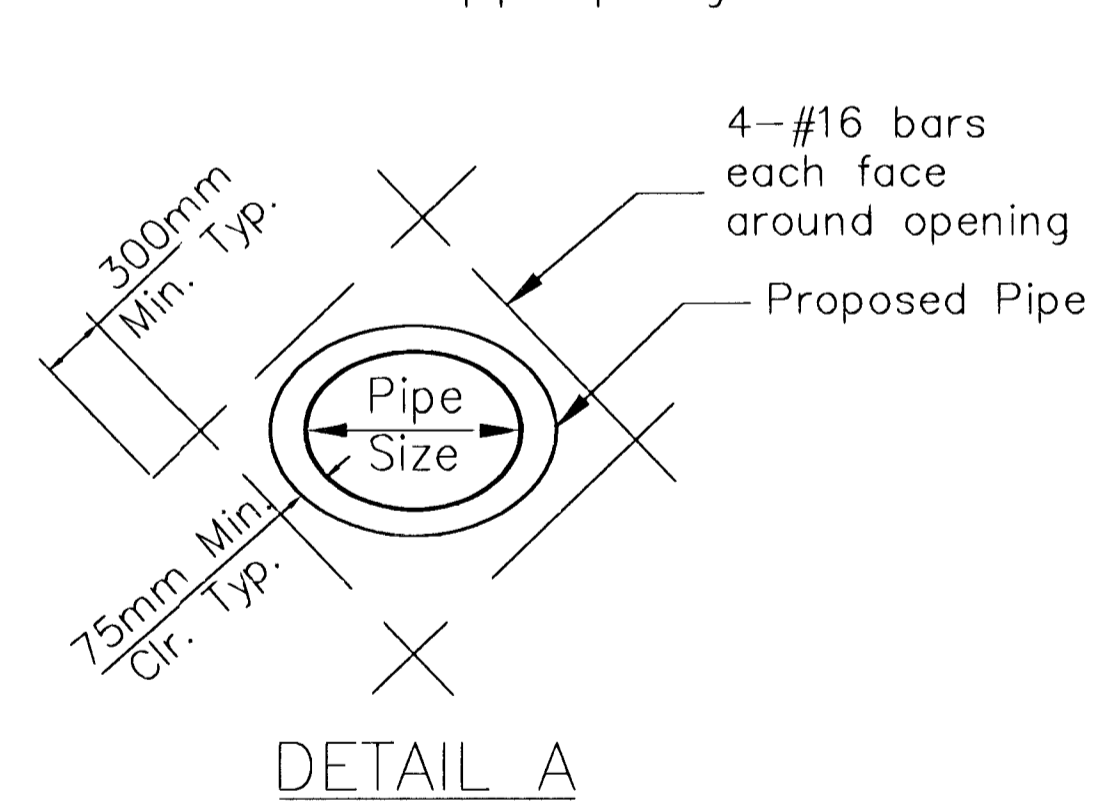
PLAN OF TOP SLAB REINFORCING



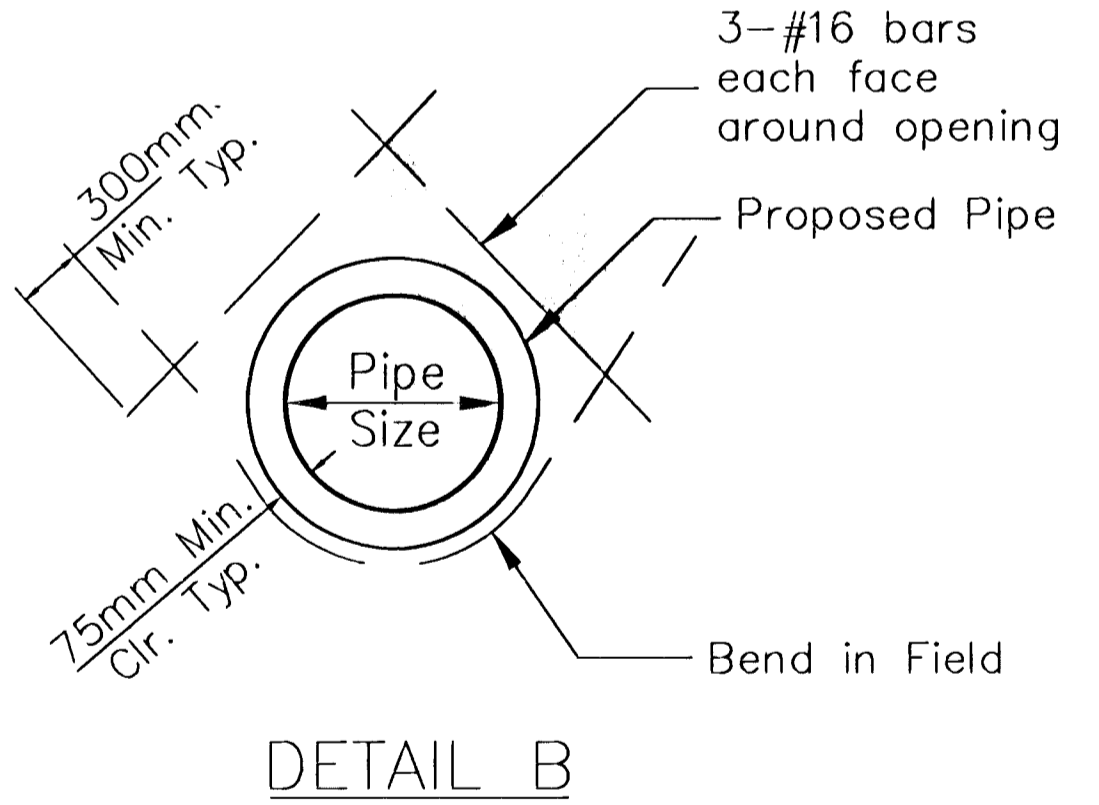
MANHOLE COVER & RING



MANHOLE COVER TYPE C



DETAIL A



DETAIL B

3					
2					
1					
NO.	DATE	REVISIONS	BY	APP'D	
KANSAS DEPARTMENT OF TRANSPORTATION					
RCB DETAILS					
FHWA APPROVAL		APP'D.			
DESIGNED	QUANTITIES	TRACED			
DESIGN CK.	DETAIL CK.	QUAN. CK.	TRACE CK.		