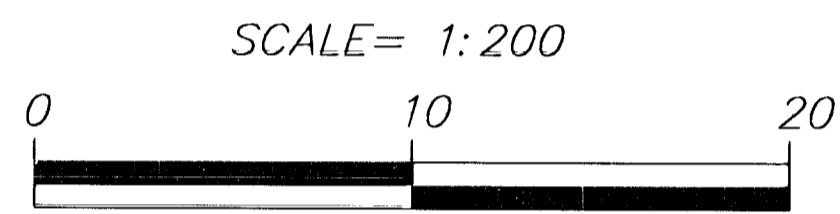
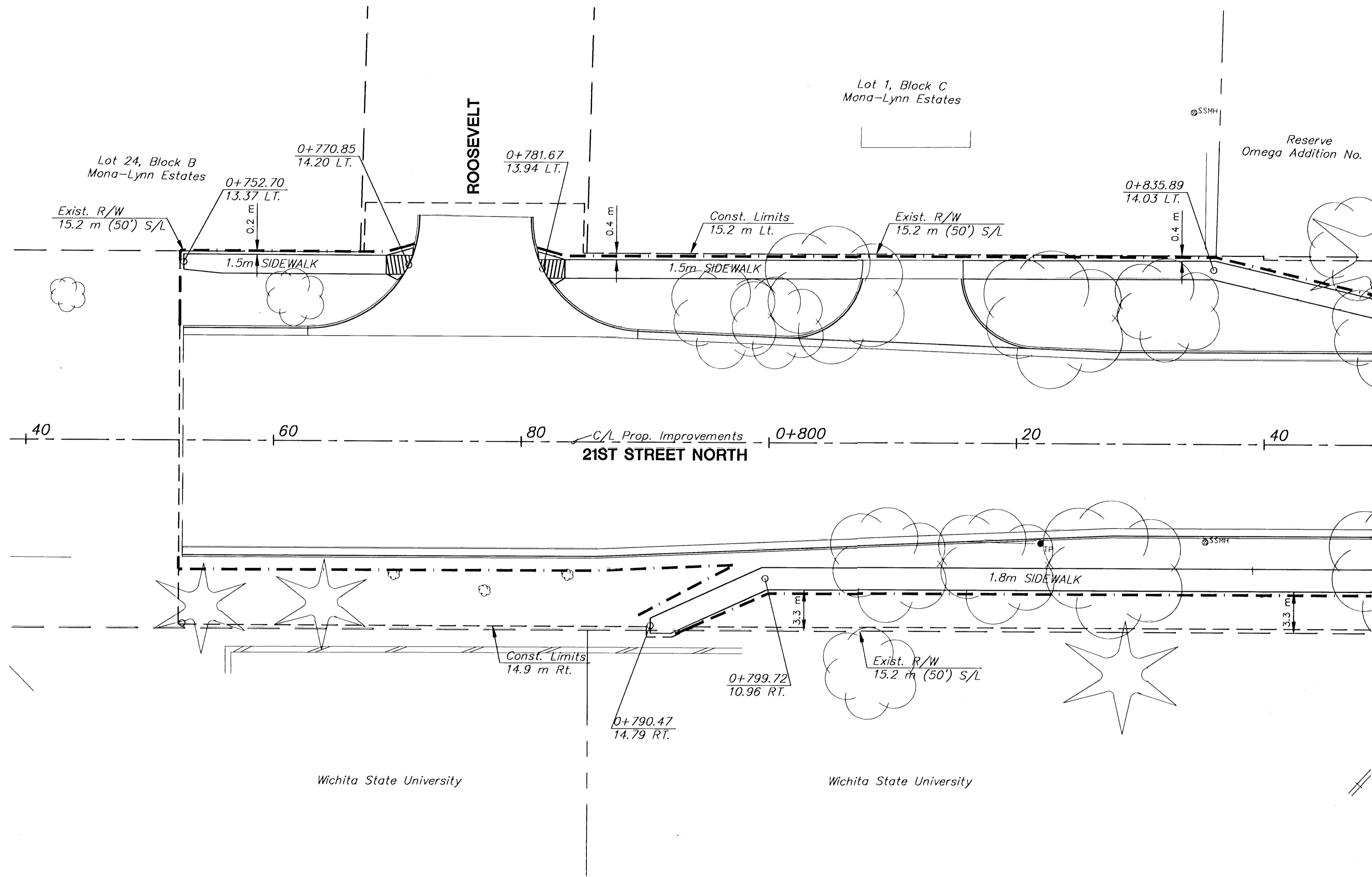


| | | | | | |
|---------------|--------|--------------|------|-----------|--------------|
| FHWA REG. NO. | STATE | PROJECT NO. | YEAR | SHEET NO. | TOTAL SHEETS |
| | KANSAS | 87-N-0200-01 | 2001 | 37 | 78 |

| | |
|--------------------|--|
| DATE | |
| BY | |
| REFERENCES NOTED | |
| REFERENCES CHECKED | |



PLAN: Lat. & Long. (meters)
 PROFILE: Horiz. same as above,
 Vert. 0.5



| SUMMARY OF SODDING | | | |
|---------------------|------|-------------------|---|
| LOCATION | | (m ₂) | Remarks |
| STATION TO STATION | SIDE | | |
| 21st St. North | | | |
| 0+752.68 - 0+770.85 | Lt. | 65.25 | Proj. Beginning to Roosevelt |
| 0+752.68 - 0+894.23 | Rt. | 270.79 | Proj. Beginning to crosswalk |
| 0+781.67 - 0+894.23 | Lt. | 300.68 | Roosevelt to crosswalk (excluding driveway) |
| 0+894.23 - 0+995.30 | Lt. | 493.52 | Crosswalk to Bluff (excluding driveway) |
| 0+894.23 - 1+309.58 | Rt. | 524.08 | Crosswalk to Prop. Perimeter Rd. |
| 1+005.08 - 1+180.52 | Lt. | 365.50 | Bluff to Fountain (excluding driveway) |
| 1+191.51 - 1+321.61 | Lt. | 135.76 | Fountain to Belmont (excluding driveway) |
| 1+334.25 - 1+496.69 | Lt. | 208.64 | Belmont to Crestview Lakes (W) Dr. |
| 1+508.83 - 1+590.09 | Lt. | 38.64 | Crestview Lakes (W) to Crestview Lakes (E) |
| 1+602.48 - 1+720.48 | Lt. | 40.38 | Crestview Lakes (E) Dr. to Proj. End |
| 1+633.04 - 1+720.48 | Rt. | 552.13 | Proj. End |
| PROJECT TOTAL | | 2995.37 | |

| SUMMARY OF SEEDING | | | |
|---------------------|------|-------------------|--------------------------------------|
| LOCATION | | (m ₂) | Remarks |
| STATION TO STATION | SIDE | | |
| 21st St. North | | | |
| 1+334.99 - 1+633.04 | Rt. | 1168.95 | Crestview Lakes (E) Dr. to Proj. End |
| PROJECT TOTAL | | 1168.95 | |

NOTE:
 CONTRACTOR TO RESOD ALL DISTURBED AREAS
 OUTSIDE OF DESIGNATED SODDING LIMITS.

LEGEND
 - - - - - = SODDING LIMITS
 - - - - - = SEEDING LIMITS

PLANTING & LANDSCAPING BY SEPARATE CONTRACT

| 2 | | | | | |
|--|------|-------------|-----------|--------|----------|
| 1 | | | | | |
| NO. | DATE | REVISIONS | BY | APP'D | |
| KANSAS DEPARTMENT OF TRANSPORTATION ROADSIDE IMPROVEMENTS 21ST STREET NORTH STA. 0+740 TO STA. 0+840 PROJ. NO. | | | | | |
| MKEC ENGINEERING CONSULTANTS, INC. WICHITA, KANSAS | | | | | |
| DESIGNED BY: | DFL | CHECKED BY: | JTC | | |
| DRAWN BY: | OUR | DATE: | JUNE 2001 | SHEET: | 37 OF 78 |