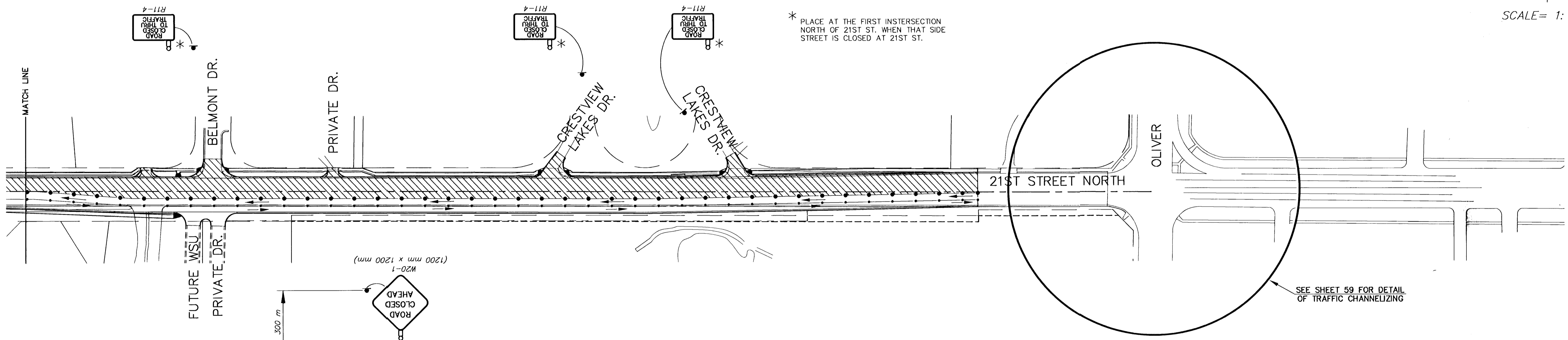
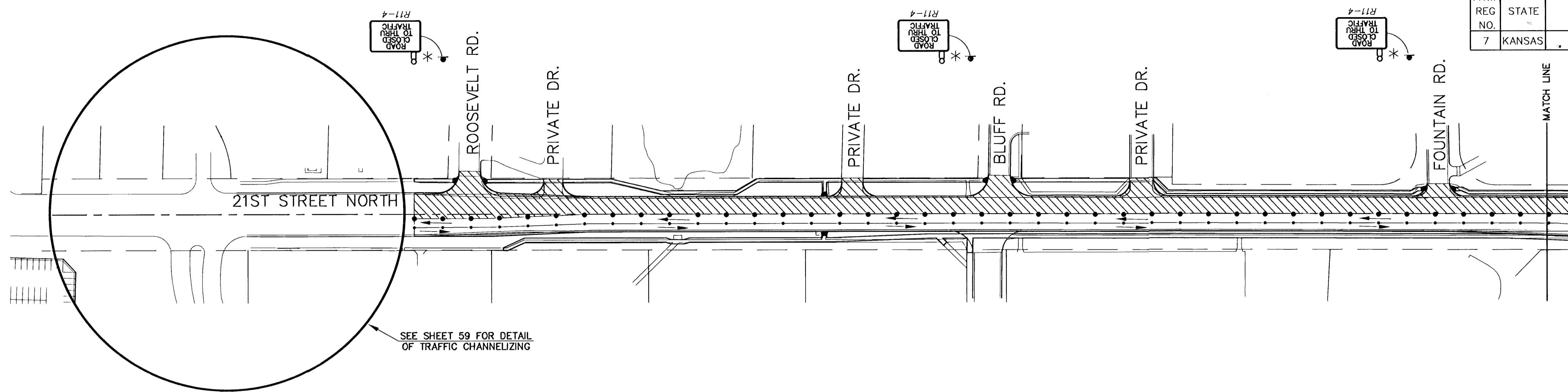


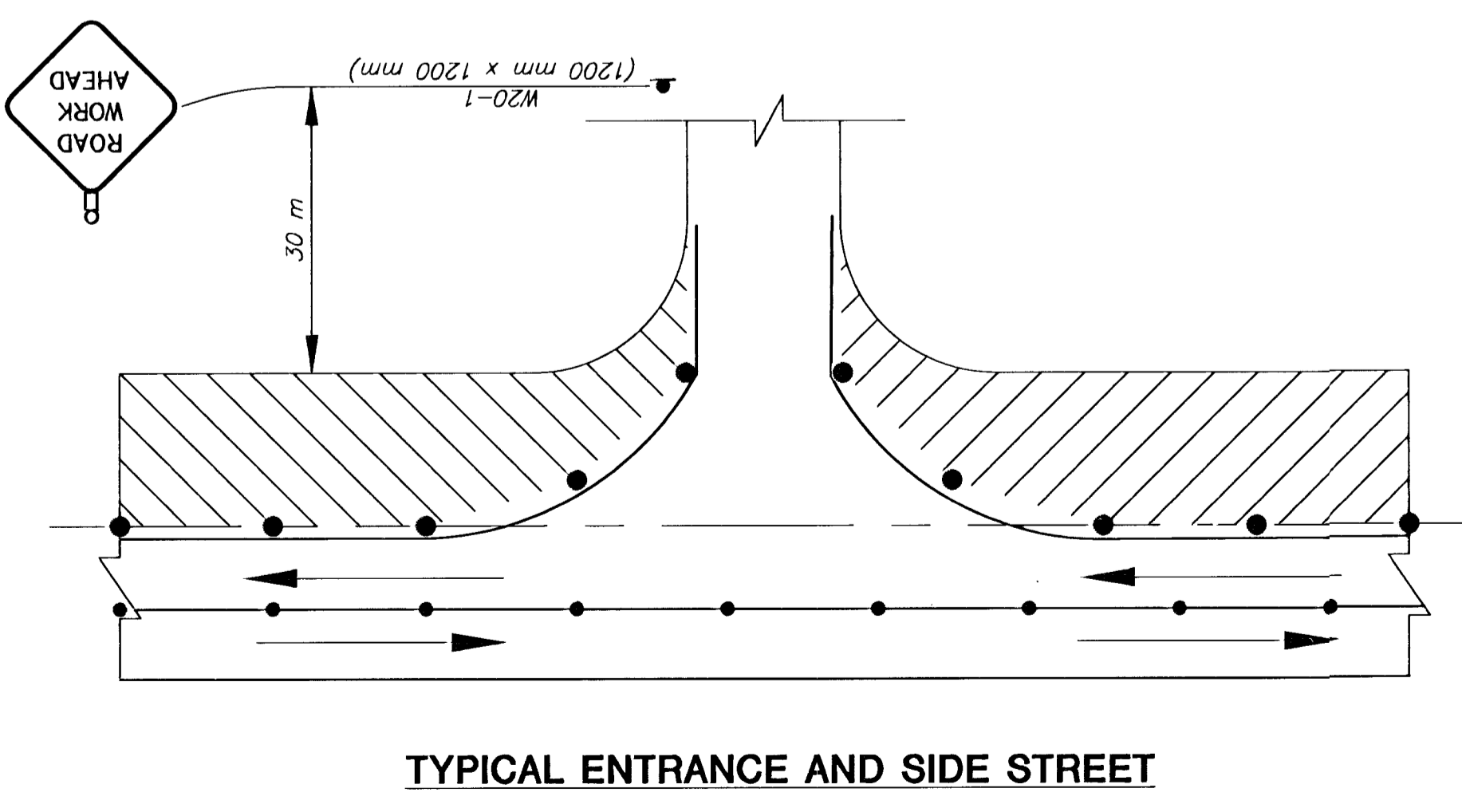
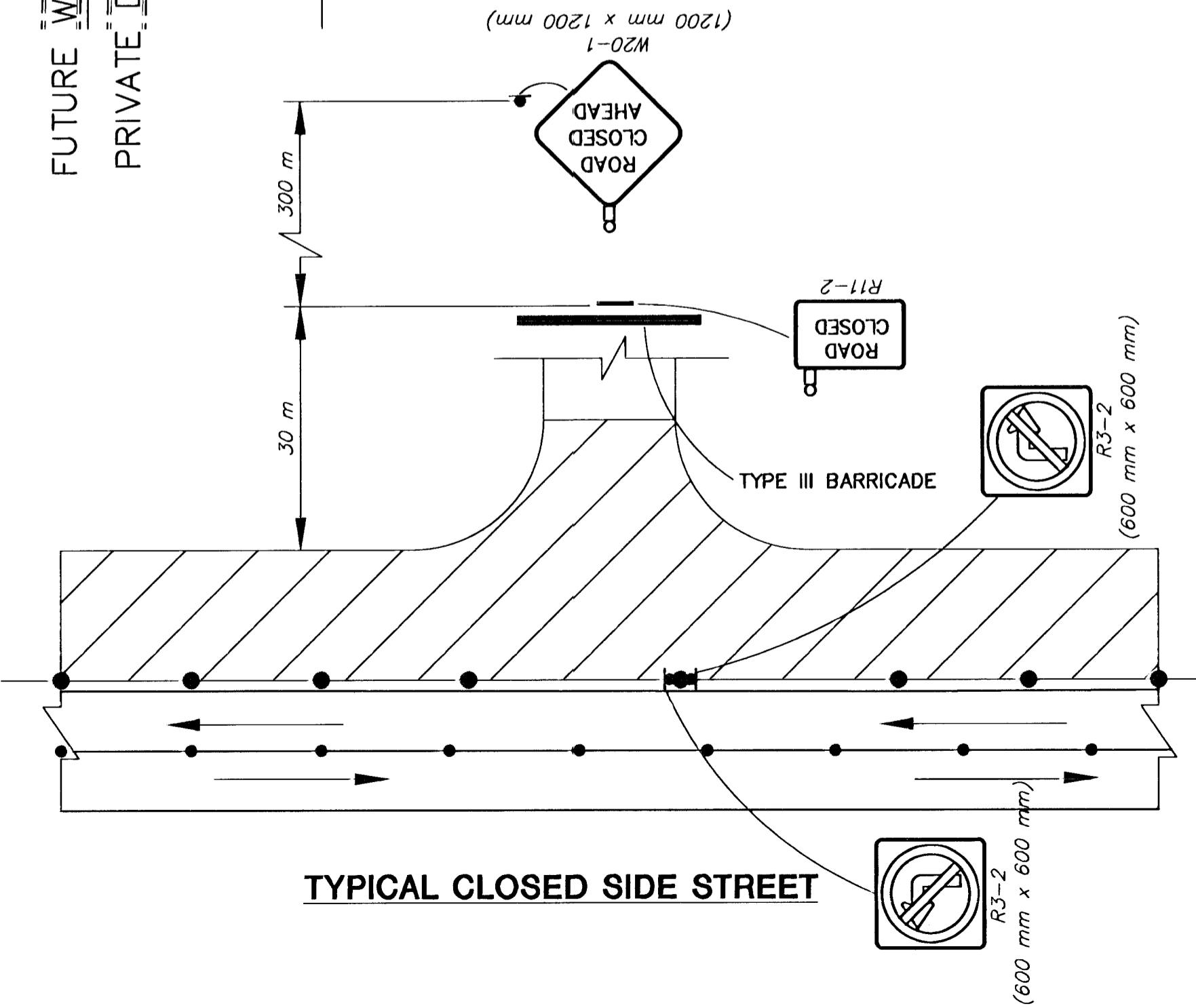
| | | | | | |
|---------------|--------|--------------|------|-----------|--------------|
| FHWA REG. NO. | STATE | PROJECT NO. | YEAR | SHEET NO. | TOTAL SHEETS |
| 7 | KANSAS | 87-N-0200-01 | 2001 | 58 | 78 |

| | |
|--------------------|------|
| BY | DATE |
| | |
| REFERENCES NOTED | |
| REFERENCES CHECKED | |



* PLACE AT THE FIRST INTERSECTION NORTH OF 21ST ST. WHEN THAT SIDE STREET IS CLOSED AT 21ST ST.

SCALE = 1:1000



- LEGEND**
- ▬ Type III Barricade
 - ▬ Mount On Type III Barricade
 - ⬠ Type B Warning Light
 - ⬠ One Post Sign
 - ⬠ Two Post Sign
 - ⬠ Traffic Lane
 - ▨ Work Area
 - Reflectorized Drum
 - Tubular Marker

| | | | | |
|---|---------|-------------|-----------|----------------|
| NO. | DATE | REVISIONS | BY | APPD. |
| 2 | | | | |
| 1 | | | | |
| KANSAS DEPARTMENT OF TRANSPORTATION | | | | |
| TRAFFIC CONTROL - PHASE II | | | | |
| 21ST STREET NORTH | | | | |
| PROJ. NO. 87-N-0200-01 | | | | |
| MKEC ENGINEERING CONSULTANTS, INC. WICHITA, KANSAS | | | | |
| DESIGNED BY: | DFL/SDH | CHECKED BY: | GJA | |
| DRAWN BY: | GJR | DATE: | JULY 2001 | SHEET 58 OF 78 |

G:\CIVIL\99257\DWG\TRAFFIC\99257-T2.DWG

G:\CIVIL\99257\DWG\TRAFFIC\99257-T2.DWG F:\1 Oct 19 10:55:28 2001