

SANITARY SEWER MODIFICATIONS

IN

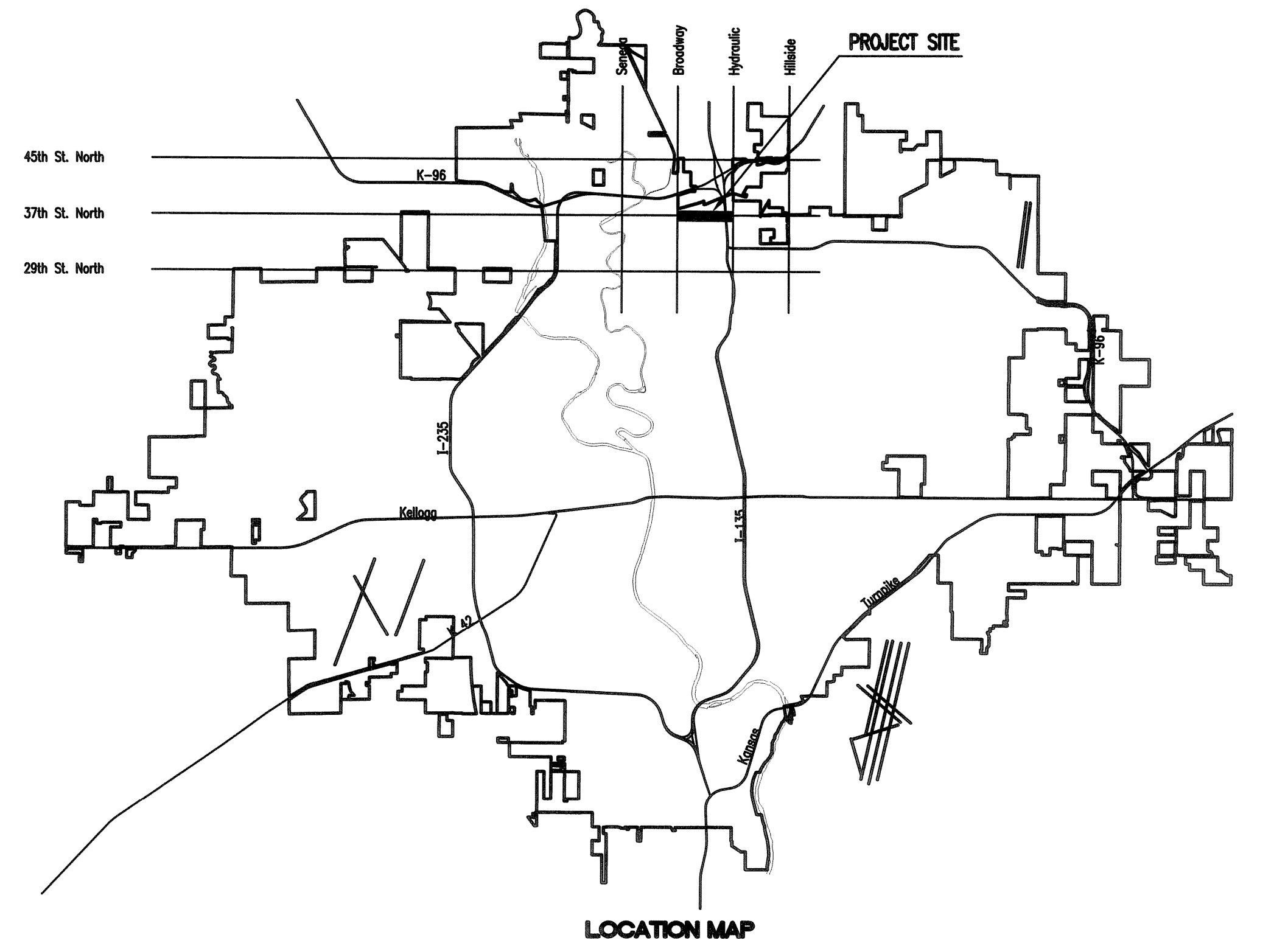
37TH STREET NORTH BROADWAY TO HYDRAULIC

CITY OF WICHITA PROJECT NO. 468-84863
OCA NO. 620610

CITY OF WICHITA, KANSAS

GARY JANZEN, P.E. - CITY ENGINEER

Wildcat Construction - Contractor
J. Westhoff/S. Degenhardt - City of Wichita, Field Project Engineers
T. Anthis - City of Wichita, Inspector
As-built
Final Acceptance Date: 09/16/2015
pdf: 08/15/2016 apr



INDEX OF SHEETS

SHEET NO. B1	TITLE SHEET
SHEET NO. B2	KEY MAP AND GENERAL NOTES
SHEET NO. B3-B5	PLAN/PROFILE
SHEET NO. B6	PRECAST SANITARY SEWER MANHOLE DETAILS
SHEET NO. B7	MANHOLE FRAME AND COVER DETAILS
SHEET NO. B8-B10	EROSION CONTROL DETAILS

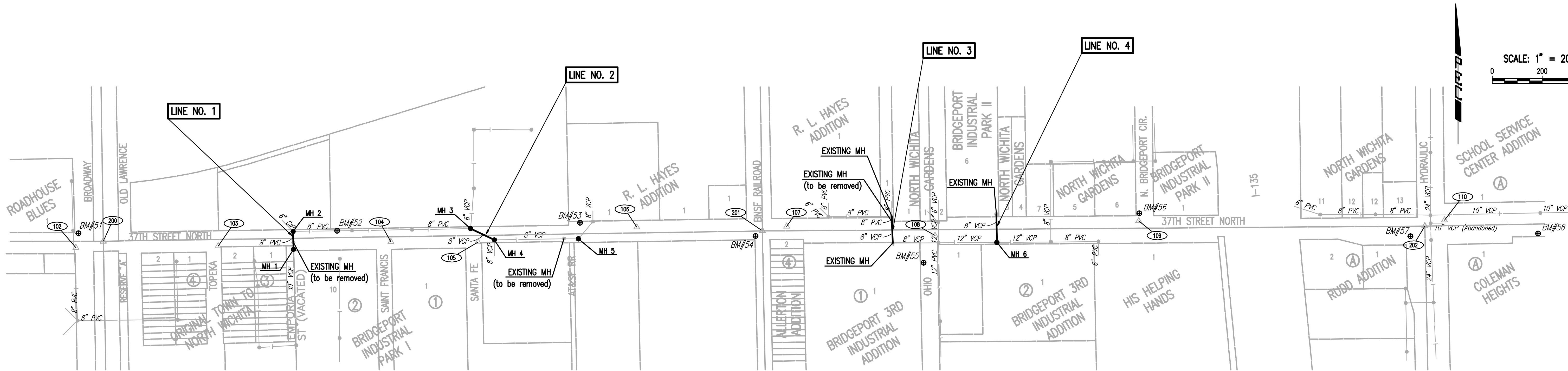
AUGUST 2013

PLANS PREPARED BY
PROFESSIONAL ENGINEERING CONSULTANTS, P.A.
ENGINEERS
WICHITA, KANSAS



Small vertical text on the left margin: Saved 08-14-2013 10:01:21 AM by RFL, Plot Scale 1:1, 08-14-2013 10:56:26 AM by BEC, C:\Users\6207\Sanitary Sewer Adjustment Plans\08207-801-SS Title

SCALE: 1" = 200'



CONTROL POINTS (100)

Pl. No. 101 (Not Shown)
 N: 1,709,716.0377, E: 1,648,118.3413
 #4 bar in N shoulder 37th St. N.
 1. Top center telephone pedestal 49.92' NW
 2. Top center fire hydrant 40.71' S
 3. PK nail in NW face power pole 93.24' SW
 4. N edge 37th St. N 2.5' S
 5. E entrance to concrete plant 20' E

Pl. No. 102
 N: 1,709,674.0152, E: 1,648,810.4592
 #4 bar at SW corner 37th/Broadway
 1. S edge of pavement of 37th St. N. 5' N
 2. Guard post 12.3' SW
 3. Traffic Signal Pole 22.0' SE
 4. C.O.W. BM Disc (#57) 57.15' N

Pl. No. 103
 N: 1,709,680.1396, E: 1,649,380.4535
 PK nail at SE corner Topeka and 37th
 1. S edge of 37th St. N. 7.58' SE
 2. E back of curb of Topeka and 37th 4.0' W
 3. S edge of 37th St. N. 10' N
 4. Chain link fence corner 54.4' WSW

Pl. No. 104
 N: 1,709,697.2573, E: 1,650,072.0200
 #4 bar on S side 37th St. N.
 1. Top center of fire hydrant 11.20' SE
 2. Center of disc golf basket 43.85' SSE
 3. 3/4" iron pipe, property corner 30.00' S
 4. E of St. Francis St. to S 28.8' W
 5. Edge of pavement (37th) 6' N

Pl. No. 105
 N: 1,709,696.1485, E: 1,650,421.5616
 PK nail at SE corner of Santa Fe and 37th
 1. NW Chainlink fence corner 17.68' SE
 2. S edge of 37th 10' N
 3. E back of curb Santa Fe 3' E

Pl. No. 106
 N: 1,709,755.4051, E: 1,651,057.4825
 PK nail E entrance to 800 E. 37th St. N.
 1. S to N edge 37th St. N. 7' S
 2. In line with W edge entrance - -
 3. Chiseled "d" on concrete pad for wrought iron fence 99.48' NE
 4. PK nail S face power pole 72.37' ENE
 5. SE Cor. Bldg. #800 E 37th St. N. 116.32' NNW

Pl. No. 107
 N: 1,709,758.6323, E: 1,651,656.6752
 PK nail in W edge asphalt entrance
 1. Chiseled "d" on W end RCP 15.27' NW
 2. N edge asphalt road - 37th St. N. 5' S
 3. E RR tracks 107' W

Pl. No. 108
 N: 1,709,722.2886, E: 1,652,250.8717
 PK nail at SE corner 37th St. N. and Ohio St.
 1. Bolt in SW face power pole 41.59' E
 2. Top center fire hydrant 52.21' WSW
 3. Center of manhole 21.90' SW
 4. E Ohio St. to S 25' W

Pl. No. 109
 N: 1,709,780.3282, E: 1,653,067.1199
 #4 bar in grass
 1. Post at S end of chain link fence 11.5' W
 2. N edge 37th St. N. 17.0' S
 3. W back of curb of Bridgeport Cir. 4' E
 4. BM #56, Chiseled "d" on curb inlet 30.2' NNE

Pl. No. 110
 N: 1,709,784.2612, E: 1,654,291.7772
 #4 bar at NE Cor. 37th St. N. and Hydraulic
 1. E guy pole 16.20' NW
 2. N edge of pavement (37th St. N.) 5' S
 3. E N end of E of 3 CMPs 25' WNW
 4. Guy wire 22.3' NE

Pl. No. 111 (Not Shown)
 N: 1,708,908.5224, E: 1,651,740.5357
 #4 bar in grass drainage area
 1. Chiseled "d" on W end RCP (BM 61) 80.3' NE
 2. Monitoring well 52.3' NNW

Pl. No. 119 (Not Shown)
 N: 1,707,210.7763, E: 1,651,868.2664
 #4 bar in grass drainage area
 1. N-S chain link fence 8.5' E
 2. S end of 54" CMP (E of 2) 141' NNW

Pl. No. 3152 (Not Shown)
 N: 1,708,206.6183, E: 1,651,699.7046
 #4 bar E of RR tracks
 1. 1" iron pipe, CP 3157 208.34' NNE
 2. E of drainage ditch 120' E

Pl. No. 3157 (Not Shown)
 N: 1,708,408.6255, E: 1,651,750.6894
 1" iron pipe
 1. 60 step nails in power pole (BM 59) 11.55' E
 2. RR tracks are to the W - -
 3. Drainage ditch is to the E - -

Pl. No. 201
 S 1/4 Cor. Sec. 28, T26S, R1E
 1/2" Iron Pipe in Thimble
 1. N 1,709,740.4371 E 1,651,559.8368
 2. Nail and Washer in SE face of Electric Pole 49.79' NE
 3. Center of E Rail on RR Track 9.81' W
 4. Nail and Washer in SW face of Light Pole 61.47' SE
 5. PK Nail in S face of Power Pole 77.85' NW
 6. City Bench Mark Disc at NW corner Concrete Base RR Signal 34.78' SW

Pl. No. 202
 SW Sec. 27, T26S, R1E
 #4 bar w/cap at road surface
 1. N: 1,709,759.8988, E: 1,654,212.6669
 2. At E of 37th St. N. & Hydraulic 62.42' WSW
 3. Center of top nut on fire hydrant 78.4' NE
 4. 3 nails in w face of guy pole 78.4' NE
 5. 3 nails in NE face of light pole 43.9' NW
 6. PK nail in SW face of light pole 89.75' SSE
 7. C.O.W. benchmark disk on concrete base of high line pole. 70.37' W

BENCHMARK LIST

Datum Benchmark:
 BM#51 C.O.W. Disc in Paved Road on S Side of Traffic Signal Manhole at NW corner of 37th St. N. and Broadway Ave. Elev.=1322.57 (NGVD29)

BM#52 Chiseled "d" on Concrete Headwall on N side 37th St. N., 190' W of St. Francis St. Elev.=1321.62 (NGVD29)

BM#53 Chiseled "d" near SE Corner of Water Valve Vault on N Side 37th St. N., on E Side of RR Spur at 800 E 37th St. N. Elev.=1322.36 (NGVD29)

BM#54 C.O.W. Disc on RR Signal Base on S Side of 37th St. N. on W Side of RR Track, Half Mile E of Broadway Ave. Elev.=1324.48 (NGVD29)

BM#55 Chiseled "d" on Center of Face of Inlet on W Side of Ohio St. on S Side of 37th St. N. Elev.=1322.63 (NGVD29)

BM#56 Chiseled "d" on Center of Face of Inlet on W Side of Bridgeport Circle, on N Side of 37th St. N. Elev.=1325.01 (NGVD29)

BM#57 C.O.W. Disk on Concrete Base of High Voltage Electric Pole at SW Corner of 37th St. N. and Hydraulic Ave. Elev.=1325.73 (NGVD29)

BM#58 Chiseled "d" on E Headwall for Entrance to NW Corner of Coleman Building, S Side of 37th St. N., 375' E of Hydraulic Ave. Elev.=1327.71 (NGVD29)

BM#59 60d Step Nails in W Face of Power Pole, on W Side of Drainage Ditch E Side of RR Tracks, 1325' S of 37th St. N. (Not Shown) Elev.=1320.99 (NGVD29)

BM#60 Top W End of 8" Cast Iron Pipe with Flange on E Side of Drainage Ditch, 1900' S of 37th St. N. (Not Shown) Elev.=1318.47 (NGVD29)

BM#61 Chiseled "d" at W End of N of 2 RCPs, 800' ± S of 37th St. N. on E Side of Drainage Ditch. (Not Shown) Elev.=1319.53 (NGVD29)

BM#62 Chiseled "d" on W Curb of Gated Asphalt Entrance 35' N of E 37th St. N., 500' W of Broadway Ave. (Not Shown) Elev.=1322.04 (NGVD29)

SECTION CORNERS (200)

1. N 1,709,699.1057 E 1,648,920.4183
 2. Centerline of 37th St. N. 3.16' N
 3. PK Nail in NE face of Power Pole 40.00' NW
 4. PK Nail in N face of Light Pole 69.25' NE
 5. Chiseled "d" on Concrete Base RR Signal 20.50' SE
 6. Center of W Rail of RR Track 8.59' E

GENERAL NOTES

- ALL CONSTRUCTION AND MATERIALS TO COMPLY WITH CITY OF WICHITA SPECIFICATIONS AND STANDARDS.
- ALL ELEVATIONS SHOWN ARE NGVD29 DATUM. (NGVD29 + 0.305 = NAVD88)
- THE CONTRACTOR SHALL LIMIT THE EXTENT OF TRENCH TO REMAIN OPEN OVERNIGHT AND WEEKENDS TO LESS THAN 50 FEET.
- CONTRACTOR WILL BE REQUIRED TO PROVIDE A MINIMUM ADVANCE NOTICE OF SEVENTY-TWO (72) HOURS TO UTILITY COMPANIES PRIOR TO STARTING ANY EXCAVATION AS FOLLOWS:
 KANSAS ONE-CALL 687-2470
 EMERGENCY DISPATCH 911
 COX COMMUNICATIONS 800-778-9140
 KANSAS GAS SERVICE 888-482-4950
 WESTAR ENERGY 800-383-1183
 BLACK HILLS ENERGY 800-694-8989
 AT&T 800-286-8313
 CITY OF WICHITA WATER DEPARTMENT 262-6000
 CITY OF WICHITA SEWER MAINTENANCE 262-6000
- UNDERGROUND UTILITY SERVICE LINES AND OVERHEAD UTILITY POLE LINES ARE TO BE ADJUSTED AS NECESSARY BY OTHERS PRIOR TO CONSTRUCTION UNLESS THE PLANS SPECIFICALLY CALL FOR THEIR ADJUSTMENT BY THE CONTRACTOR OR UNLESS THE PLANS SPECIFICALLY IDENTIFY A UTILITY TO BE ADJUSTED BY ITS OWNER DURING CONSTRUCTION. EXISTING UTILITIES AND THEIR LOCATIONS, AS SHOWN ON THE PLANS, REPRESENT THE BEST INFORMATION OBTAINABLE FOR THE DESIGN. THE CONTRACTOR WILL BE REQUIRED TO WORK AROUND EXISTING UTILITIES WITHIN THE RIGHT-OF-WAY WHICH DO NOT CONFLICT WITH PROPOSED CONSTRUCTION.
- THE CONTRACTOR SHALL BE RESPONSIBLE FOR PRESERVING PROPERTY IRONS. THE CONTRACTOR WILL BE REQUIRED TO RE-ESTABLISH ANY PROPERTY IRONS WHICH ARE DAMAGED OR DESTROYED BY HIS CONSTRUCTION OPERATIONS. SUCH IRONS SHALL BE RE-ESTABLISHED BY A LICENSED LAND SURVEYOR IN ACCORDANCE WITH STATE LAWS. ALL COSTS FOR THIS WORK SHALL BE SUBSIDIARY TO THE LUMP SUM PRICE BID FOR "SITE RESTORATION".
- CONTRACTOR SHALL PROVIDE POSITIVE DRAINAGE AWAY FROM ALL MANHOLE COVERS.
- MANHOLES SHALL BE CONSTRUCTED IN ACCORDANCE WITH THE STANDARD SPECIFICATIONS AND THE STANDARD DETAIL DRAWINGS.
- RUBBLE FROM THE REMOVAL OF MISCELLANEOUS STRUCTURES INCLUDING ANY TREES REMOVED AND TREE TRIMMINGS AND EXCESS EXCAVATED MATERIAL SHALL BE DISPOSED OF ON SITES PROVIDED BY THE CONTRACTOR. THESE SITES SHALL ALSO BE APPROVED OF BY THE ENGINEER AS TO SUITABILITY, APPEARANCE, AND SITE LOCATION. LOCATIONS THAT, IN THE OPINION OF THE ENGINEER, LEAVE AN UNSIGHTLY APPEARANCE WILL NOT BE APPROVED. ALL DISPOSAL SITES MUST BE APPROVED BY THE KANSAS DEPARTMENT OF HEALTH AND ENVIRONMENT. MATERIAL EITHER STOCKPILED OR DISPOSED OF IN A FLOOD PLAN WILL REQUIRE A KANSAS STATE BOARD OF AGRICULTURE PERMIT. ANY MATERIAL DUMPED IN WATERS OF THE UNITED STATES OR WETLANDS IS SUBJECT TO U.S. CORPS OF ENGINEERS PERMITTING REGULATIONS. ANY MATERIAL BURIED OR STOCKPILED BEYOND APPROVED CONSTRUCTION LIMITS MAY REQUIRE ARCHAEOLOGICAL INVESTIGATIONS UNLESS BURIED IN A PREVIOUSLY APPROVED DISPOSAL LOCATION.
- THE CONTRACTOR SHALL AVOID REMOVAL OR TRIMMING OF ANY TREES OR SHRUBS WHERE POSSIBLE. WHERE THE CONTRACTOR BELIEVES THE REMOVAL OR TRIMMING IS UNAVOIDABLE, HE SHALL COORDINATE SUCH WORK WITH THE ENGINEER. SUCH WORK SHALL BE CONSIDERED SUBSIDIARY TO THE LUMP SUM PRICE BID FOR "SITE CLEARING".
- THE CONTRACTOR SHALL PREVENT ANY CONSTRUCTION DEBRIS FROM ENTERING THE EXISTING SANITARY SEWER DURING CONSTRUCTION.
- THE CONTRACTOR SHALL GIVE ALL PROPERTY OWNERS AND/OR TENANTS OF DEVELOPED PROPERTY ADJUTING THE CONSTRUCTION OF THIS PROJECT A MINIMUM OF TEN (10) DAYS ADVANCE NOTICE PRIOR TO START OF CONSTRUCTION.
- THE CONTRACTOR SHALL BE RESPONSIBLE FOR MAINTAINING CONTINUOUS FLOW OF SEWAGE THROUGH CONSTRUCTION. CONTRACTOR'S PROPOSED METHOD FOR MAINTAINING SEWAGE FLOW SHALL BE SUBMITTED AND APPROVED BY THE ENGINEER PRIOR TO STARTING AND BY-PASSING OF SEWAGE FLOWS. COST OF MAINTAINING FLOW OF SEWAGE THROUGH CONSTRUCTION WILL NOT BE PAID FOR DIRECTLY AND THIS COST SHALL BE CONSIDERED AS SUBSIDIARY TO THE OTHER RELATED ITEMS OF WORK.
- ANY OVER EXCAVATIONS FROM MANHOLE AND PIPE REMOVAL SHALL BE BACKFILLED WITH AB-3 COMPACTED TO 95% ASTM D698.

GENERAL NOTES

- ALL COSTS FOR MANHOLE REMOVAL OR PIPE REMOVAL SHALL BE INCLUDED IN THE PRICE BID FOR "MANHOLE REMOVED" OR "PIPE REMOVED". ALL WORK ASSOCIATED WITH MANHOLES AND PIPE TO BE ABANDONED IN PLACE, INCLUDING ANY PLUGS OR CAPS REQUIRED SHALL BE INCLUDED IN THE LUMP SUM BID FOR "SITE CLEARING".
- THE CONTRACTOR SHALL NOT BURY MANHOLES THAT HAVE RIM ELEVATIONS WHICH ARE LOWER THAN EXISTING GROUND AT THE MANHOLE. THE GROUND AROUND SUCH MANHOLES AND ALONG THE SEWER ALIGNMENT SHALL BE BACKFILLED TO THE APPROXIMATE ELEVATION OF THE PROPOSED GROUND ELEVATION SHOWN ON THE PLAN/PROFILE SHEETS. THE CONTRACTOR SHALL PROVIDE DRAINAGE AWAY FROM THESE MANHOLES AND SEWER LINES BY CONSTRUCTION OF TEMPORARY DITCHES OR SLOPING THE GROUND AS REQUIRED. ALL COSTS FOR THIS WORK SHALL BE CONSIDERED SUBSIDIARY TO THE INSTALLED BID PRICE FOR MANHOLES OR PIPE.
- INTERURBAN TRAFFIC GENERATED OUTSIDE THE PROJECT AREA AND LOCAL BUSINESS OR RESIDENTIAL TRAFFIC GENERATED WITHIN THE PROJECT AREA ARE TO BE CARRIED THROUGH CONSTRUCTION AS FURTHER PROMULGATED BY PROJECT SPECIAL PROVISIONS. THE CONTRACTOR SHALL UTILIZE BARRICADES, SIGNS, GUARDS, AND FLAGMEN IN ACCORDANCE WITH THE MANUAL ON UNIFORM TRAFFIC CONTROL DEVICES.
- WHERE INDICATED IN THE PLANS, THE SANITARY SEWER EXCAVATION SHALL BE SAND FILLED, FLUSHED AND VIBRATED WITH WATER PER THE REQUIREMENTS LISTED IN THE STANDARD SPECIFICATIONS FOR THE CITY OF WICHITA, UNLESS FLOWABLE FILL OR OTHER IMPROVED BACKFILL MATERIAL IS OTHERWISE SPECIFIED. ALL COSTS FOR SAND FILLING AND FLUSHING/VIBRATING SHALL BE INCLUDED IN THE UNIT PRICE BID FOR "FILL, SAND (FLUSHED & VIBRATED)".
- EACH BIDDER SHALL VISIT THE SITE OF THE PROJECT BEFORE SUBMITTING THE PROPOSAL FOR THIS WORK SO THAT HE WILL BE FULLY INFORMED OF THE EXISTING FIELD CONDITIONS AND THE OBSTACLES WHICH MIGHT BE ENCOUNTERED. UPON AWARD OF THE CONTRACT THE CONTRACTOR WILL NOT BE GRANTED ANY ADDITIONAL COMPENSATION WITH REGARDS TO TIME AND MONEY FOR CONDITIONS THAT MAY HAVE BEEN EVALUATED DURING ANY INSPECTION OF THE SITE.
- WHEN REMOVING/ABANDONING SANITARY SEWER LINES AS SHOWN IN THE PLANS, THE CONTRACTOR SHALL CAP OR PLUG THE ENDS OF THE PIPES REMAINING IN PLACE PRIOR TO REMOVAL. ALL COSTS FOR THE REMOVAL/ABANDON OF EXISTING SANITARY SEWER LINES AS PART OF CONSTRUCTION SHALL BE CONSIDERED SUBSIDIARY TO THE LUMP SUM PRICE BID FOR "SITE CLEARING" FOR THE SANITARY SEWER PROJECT.
- IT SHOULD BE NOTED THAT OTHER BURIED LINES AND CABLE MAY EXIST WHICH ARE NOT SHOWN ON THESE PLANS. THE CONTRACTOR SHALL EXERCISE EXTREME CAUTION DURING TRENCHING OPERATIONS TO AVOID DAMAGING THESE LINES AND CABLES. ANY UTILITIES DAMAGED SHALL BE REPLACED OR REPAIRED IMMEDIATELY AS DIRECTED BY THE ENGINEER AT THE CONTRACTOR'S EXPENSE. THE CONTRACTOR SHALL PROTECT FROM DAMAGE AND SUPPORT EXISTING UTILITIES THROUGH CONSTRUCTION AS APPROVED BY THE UTILITY OWNER AND THE ENGINEER AT THE CONTRACTOR'S EXPENSE.
- WHERE THE IMPROVEMENTS CROSS EXISTING PUBLIC OR PRIVATE UTILITIES WHICH ARE NOT TO BE ADJUSTED BY OTHERS, THE CONTRACTOR SHALL PROVIDE THE MATERIAL AND MEANS TO PROTECT AND SUPPORT SAID UTILITIES DURING CONSTRUCTION TO THE SATISFACTION OF THE ENGINEER.
- EROSION CONTROL (BMP'S)
 EROSION CONTROL MEASURES FOR THE PROJECT WILL BE PERFORMED BY THE PAVING CONTRACTOR. THE CONTRACTOR SHALL COORDINATE ALL ACTIVITIES WITH THE PAVING CONTRACTOR AND ENSURE THAT EROSION PROTECTION MEASURES ARE IN PLACE PRIOR TO EXCAVATION FOR INSTALLATION OF THE SANITARY SEWER. SEE PAVING/SWD PLANS FOR ADDITIONAL INFORMATION. PRIOR TO ANY CONSTRUCTION THE CONTRACTOR SHALL ENSURE THAT THE APPROPRIATE EROSION PROTECTION MEASURES ARE IN PLACE. THE PAVING CONTRACTOR SHALL INSTALL AND MAINTAIN EROSION PROTECTION THROUGHOUT THE DURATION OF THE PROJECT.

**SANITARY SEWER MODIFICATIONS
 37TH STREET NORTH - BROADWAY TO HYDRAULIC
 KEY MAP AND GENERAL NOTES**

GARY JANZEN, P.E. - CITY ENGINEER
 CITY OF WICHITA PROJECT NO. 468-84863

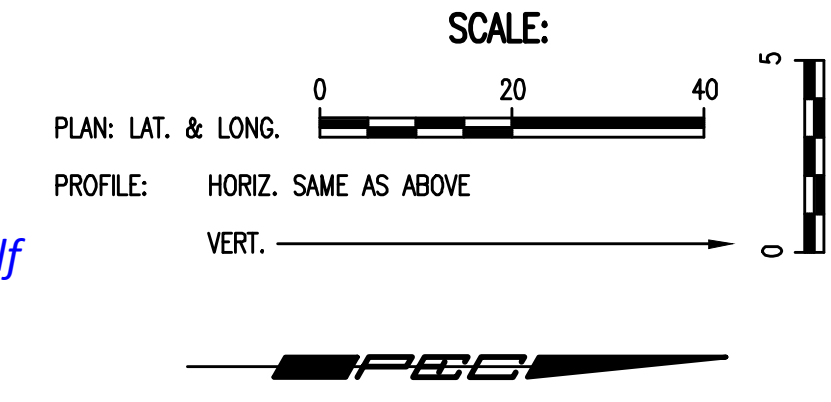
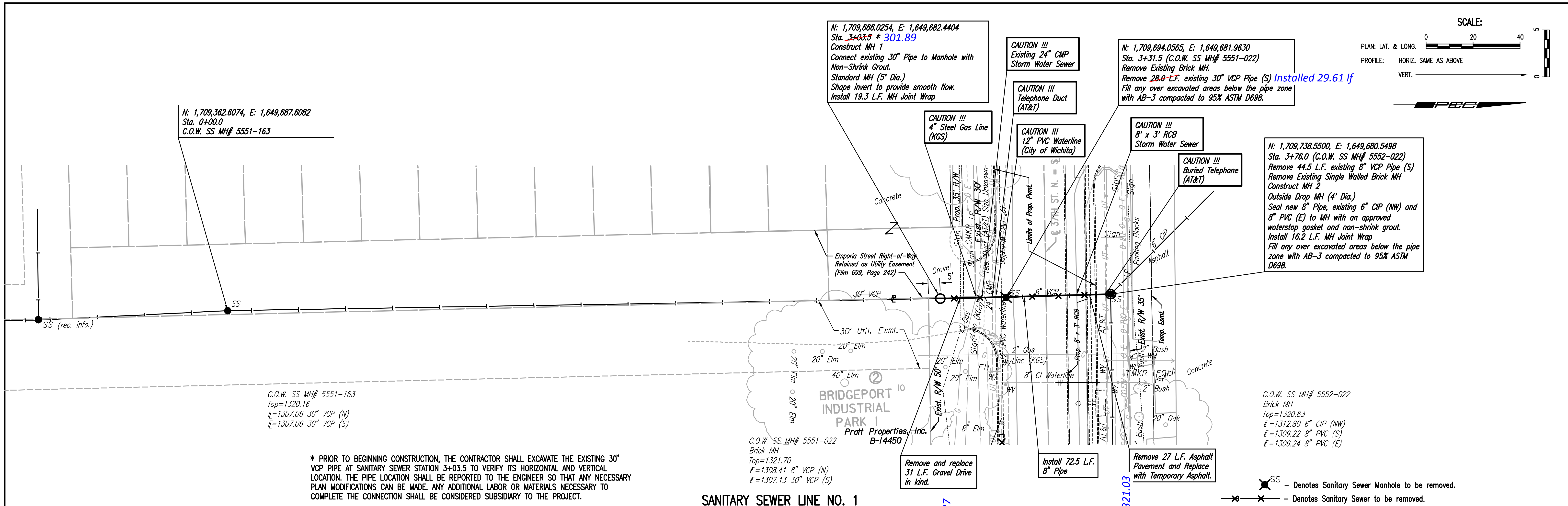
PEC PROFESSIONAL ENGINEERING CONSULTANTS, P.A.
 303 SOUTH TOPEKA WICHITA, KS 67202
 316-262-2691 www.pec1.com

Designed by	MDK	Job No.	35-08207-0042	Sh.	B2 of B10
Drawn by	CSL	Date	December 2011		

PLAN	CHECKED	DATE
	CHECKED	

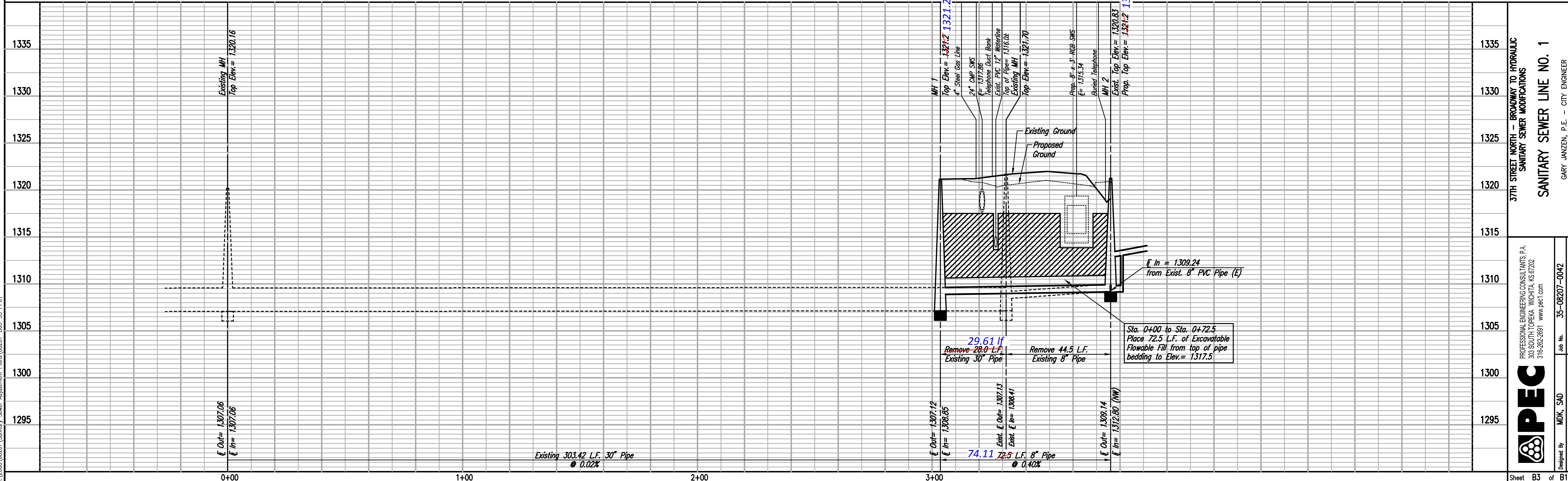
PROFILE	CHECKED	DATE
	CHECKED	

Served: 07-31-2013 10:13:53 AM by PEJ
 Plot Scale: 1/20 08-14-2013 2:23:37 PM by BEJ
 CA 1/2008 (08207) Sanitary Sewer Adjustment Plans 08207-B03-SS-PP01



* PRIOR TO BEGINNING CONSTRUCTION, THE CONTRACTOR SHALL EXCAVATE THE EXISTING 30" VCP PIPE AT SANITARY SEWER STATION 3+03.5 TO VERIFY ITS HORIZONTAL AND VERTICAL LOCATION. THE PIPE LOCATION SHALL BE REPORTED TO THE ENGINEER SO THAT ANY NECESSARY PLAN MODIFICATIONS CAN BE MADE. ANY ADDITIONAL LABOR OR MATERIALS NECESSARY TO COMPLETE THE CONNECTION SHALL BE CONSIDERED SUBSIDIARY TO THE PROJECT.

SANITARY SEWER LINE NO. 1



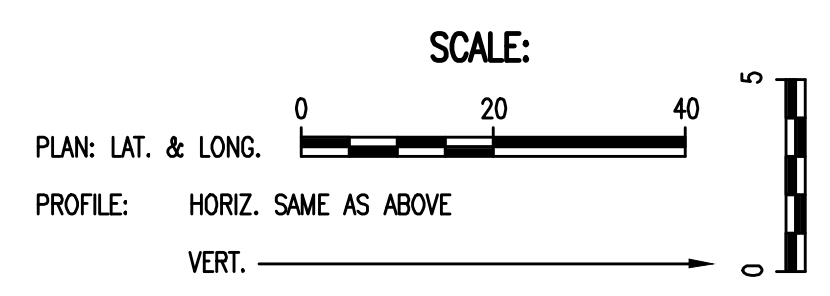
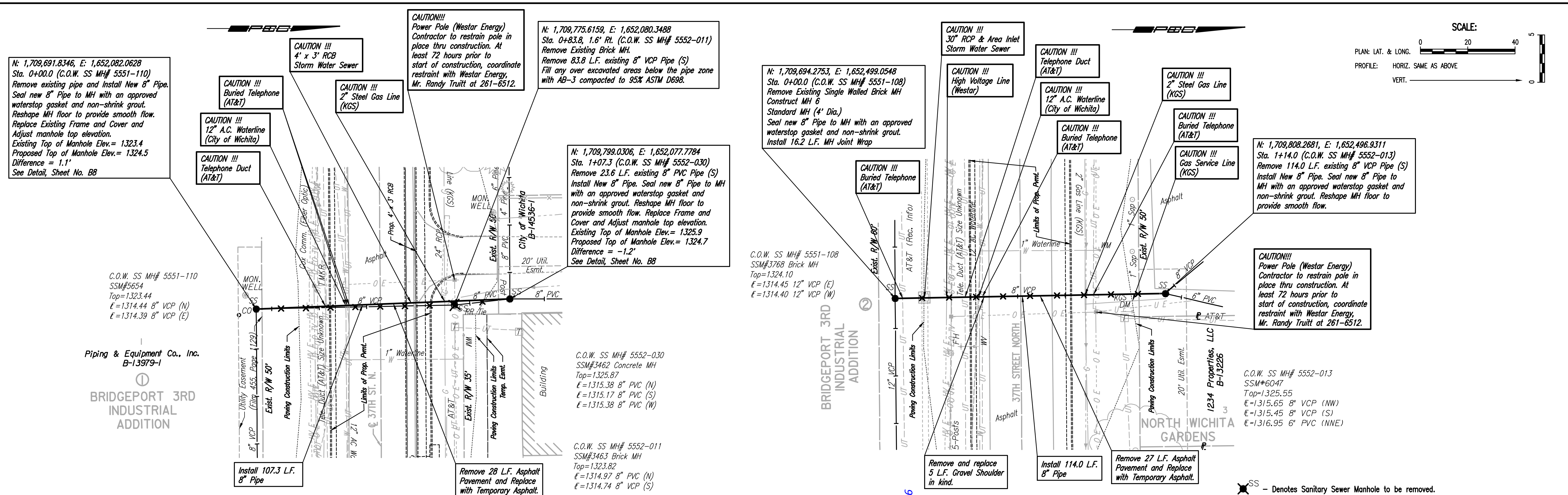
37TH STREET NORTH - BROADWAY TO HYDRAULIC
 SANITARY SEWER MODIFICATIONS
SANITARY SEWER LINE NO. 1
 GARY JANZEN, P.E. - CITY ENGINEER
 CITY OF WICHITA PROJECT NO. 468-84863

PECC
 PROFESSIONAL ENGINEERING CONSULTANTS P.A.
 308 SOUTH TOPEKA WICHITA, KS 67202
 316-262-2691 www.pecc.com
 Designed By: MDK, SAD
 Drawn By: JAN, CSL
 Job No.: 35-08207-0042
 Date: December 2011
 Sheet B3 of B10

PLAN	CHECKED	DATE
	CHECKED	

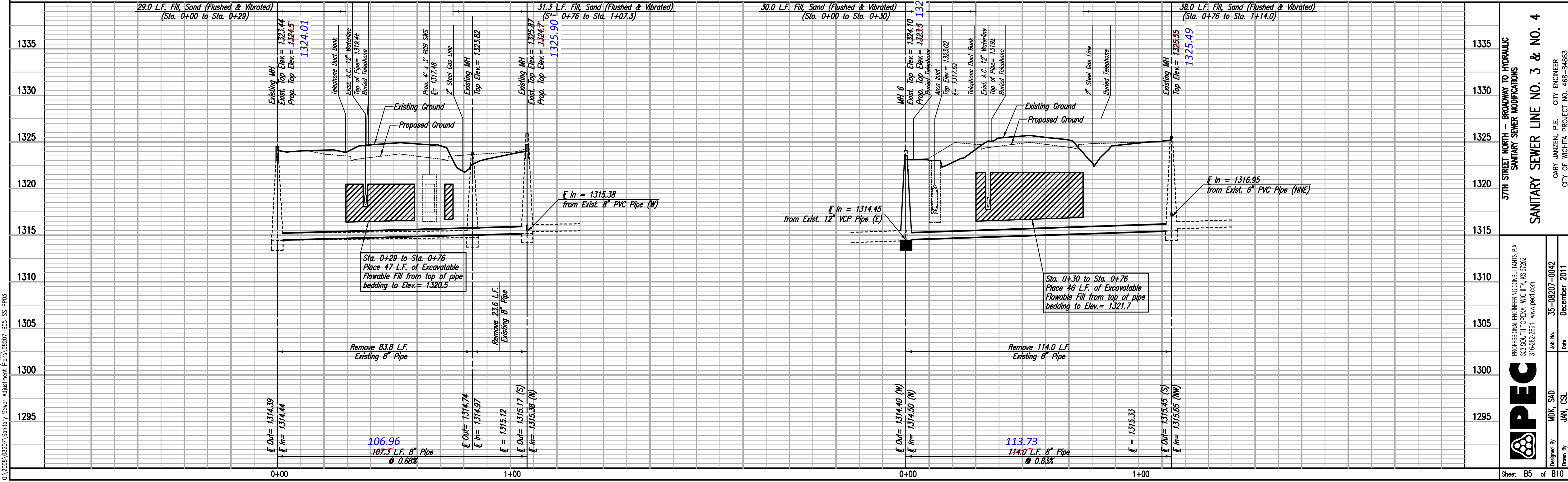
PROFILE	CHECKED	DATE
	CHECKED	

Saved: 07-31-2013 10:12:52 AM by: PEJ
 Plot Scale: 1:20 08-14-2013 2:22:39 PM by: BEJ
 CA: 2008 (08207) Sanitary Sewer Adjustment Plans 08207-B05-SS-PP03



SANITARY SEWER LINE NO. 3

SANITARY SEWER LINE NO. 4



37TH STREET NORTH - BROADWAY TO HYDRAULIC
 SANITARY SEWER MODIFICATIONS

SANITARY SEWER LINE NO. 3 & NO. 4

PROFESSIONAL ENGINEERING CONSULTANTS P.A.
 308 SOUTH TOPEKA WICHITA, KS 67202
 316-262-2691 www.pec1.com

Designed by MDK, SJD
 JAN, CSL

Job No. 35-08207-0042
 Date December 2011

GARY JANZEN, P.E. - CITY ENGINEER
 CITY OF WICHITA PROJECT NO. 468-84863

Sheet B5 of B10