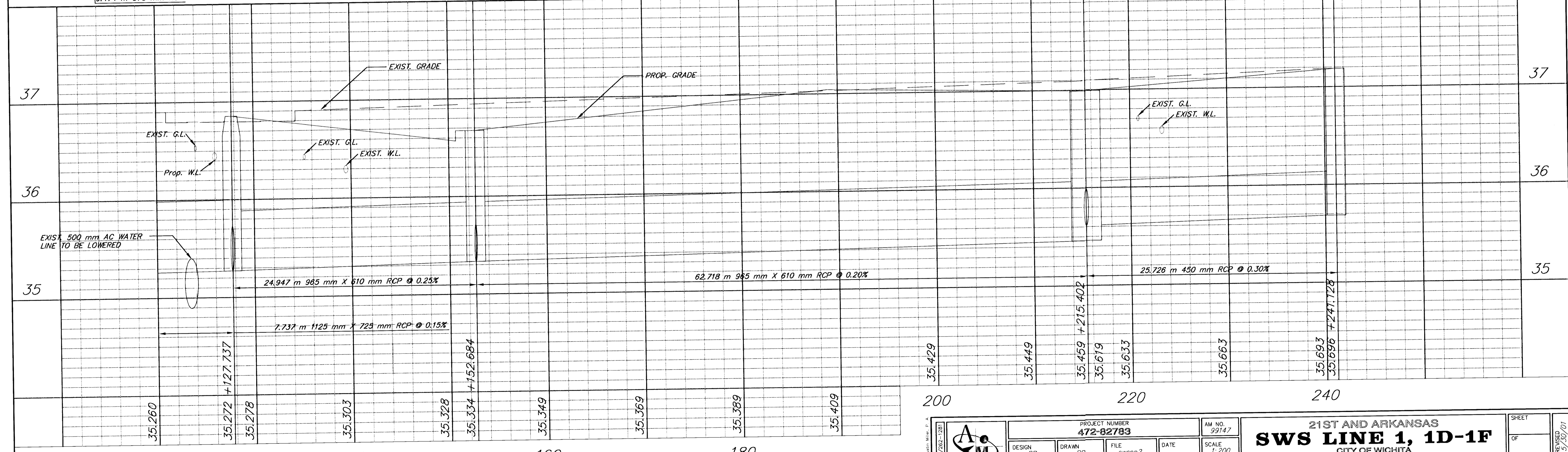
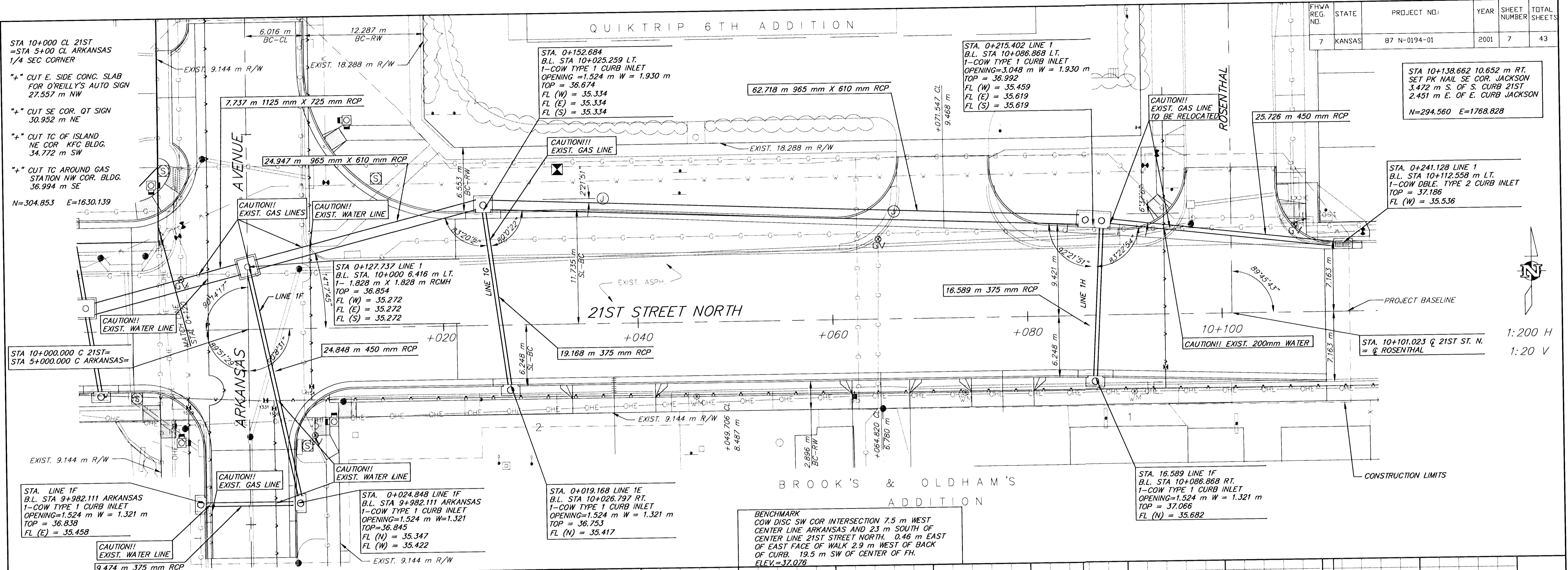


FHWA REG. NO.	STATE	PROJECT NO.	YEAR	SHEET NUMBER	TOTAL SHEETS
7	KANSAS	87 N-0194-01	2001	7	43



	PROJECT NUMBER <b>472-82783</b>	AM NO. 99147	<b>21ST AND ARKANSAS</b> <b>SWS LINE 1, 1D-1F</b> CITY OF WICHITA	SHEET OF
	DESIGN RR	DATE		

1:200 H  
1:20 V

STA 10+000 CL 21ST  
=STA 5+00 CL ARKANSAS  
1/4 SEC CORNER

"+" CUT E. SIDE CONC. SLAB  
FOR O'REILLY'S AUTO SIGN  
27.557 m NW

"+" CUT SE COR. QT SIGN  
30.952 m NE

"+" CUT TC OF ISLAND  
NE COR KFC BLDG.  
34.772 m SW

"+" CUT TC AROUND GAS  
STATION NW COR. BLDG.  
36.994 m SE

N=304.853 E=1630.139

STA 10+000.000 C 21ST=  
STA 5+000.000 C ARKANSAS=

STA. LINE 1F  
B.L. STA 9+982.111 ARKANSAS  
1-COW TYPE 1 CURB INLET  
OPENING=1.524 m W = 1.321 m  
TOP = 36.838  
FL (E) = 35.458

STA 0+127.737 LINE 1  
B.L. STA. 10+000 6.416 m LT.  
1-1.929 m X 1.828 m RCMH  
TOP = 36.854  
FL (W) = 35.272  
FL (E) = 35.272  
FL (S) = 35.272

STA. 0+024.848 LINE 1F  
B.L. STA 9+982.111 ARKANSAS  
1-COW TYPE 1 CURB INLET  
OPENING=1.524 m W=1.321  
TOP=36.845  
FL (N) = 35.347  
FL (W) = 35.422

STA. 0+019.168 LINE 1E  
B.L. STA 10+026.797 RT.  
1-COW TYPE 1 CURB INLET  
OPENING=1.524 m W = 1.321 m  
TOP = 36.753  
FL (N) = 35.417

BENCHMARK  
COW DISC SW COR INTERSECTION 7.5 m WEST  
CENTER LINE ARKANSAS AND 23 m SOUTH OF  
CENTER LINE 21ST STREET NORTH. 0.46 m EAST  
OF EAST FACE OF WALK 2.9 m WEST OF BACK  
OF CURB. 19.5 m SW OF CENTER OF FH.  
ELEV.=37.076

STA. 0+215.402 LINE 1  
B.L. STA 10+086.868 LT.  
1-COW TYPE 1 CURB INLET  
OPENING=3.048 m W = 1.930 m  
TOP = 36.992  
FL (W) = 35.459  
FL (E) = 35.619  
FL (S) = 35.619

STA 10+138.662 10.652 m RT.  
SET PK NAIL SE COR. JACKSON  
3.472 m S. OF S. CURB 21ST  
2.451 m E. OF E. CURB JACKSON  
N=294.560 E=1768.828

STA. 0+241.128 LINE 1  
B.L. STA 10+112.558 m LT.  
1-COW DBLE. TYPE 2 CURB INLET  
TOP = 37.186  
FL (W) = 35.536

STA. 10+101.023 @ 21ST ST. N.  
= @ ROSENTHAL

STA. 16.589 LINE 1F  
B.L. STA 10+086.868 RT.  
1-COW TYPE 1 CURB INLET  
OPENING=1.524 m W = 1.321 m  
TOP = 37.066  
FL (N) = 35.682