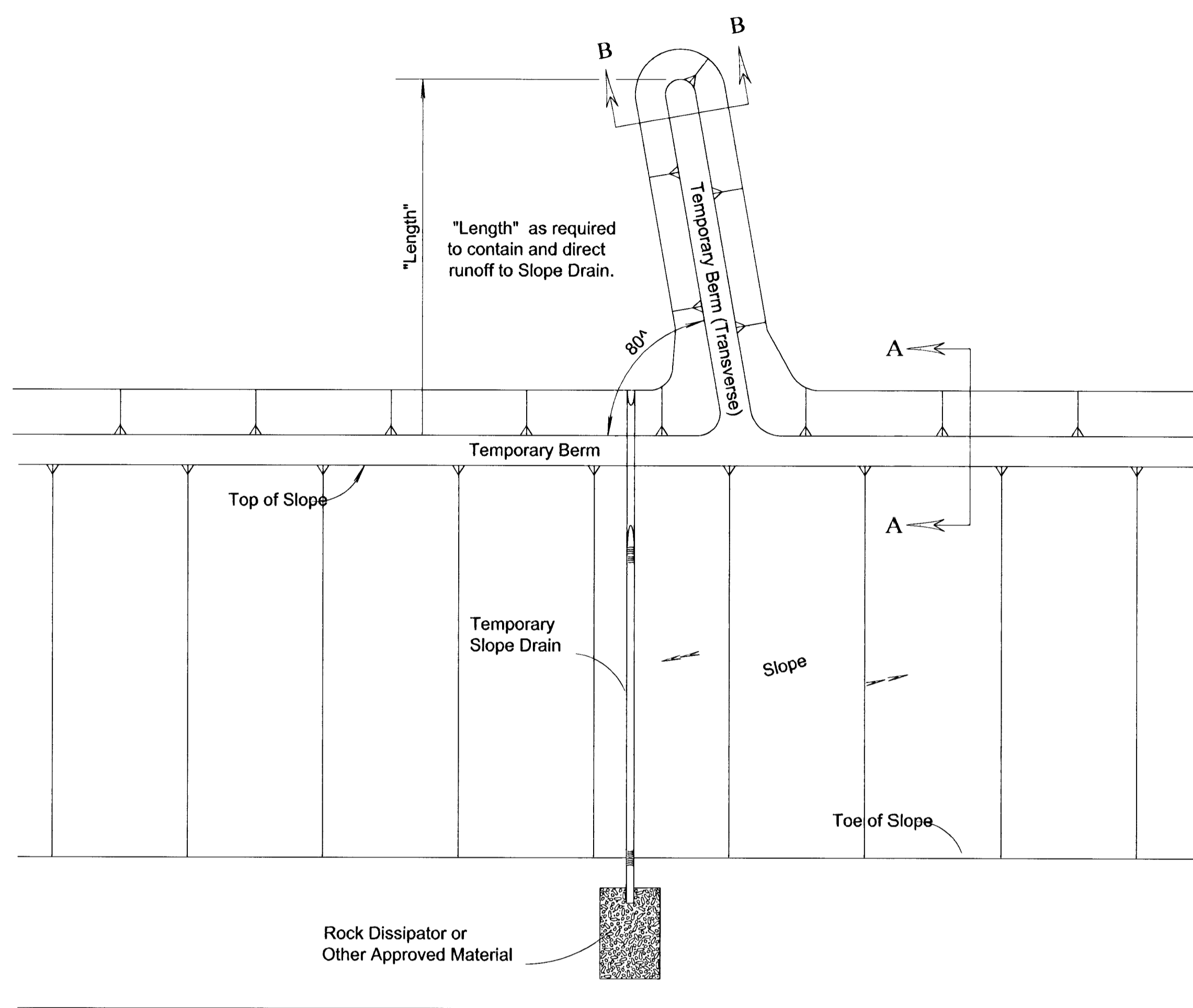
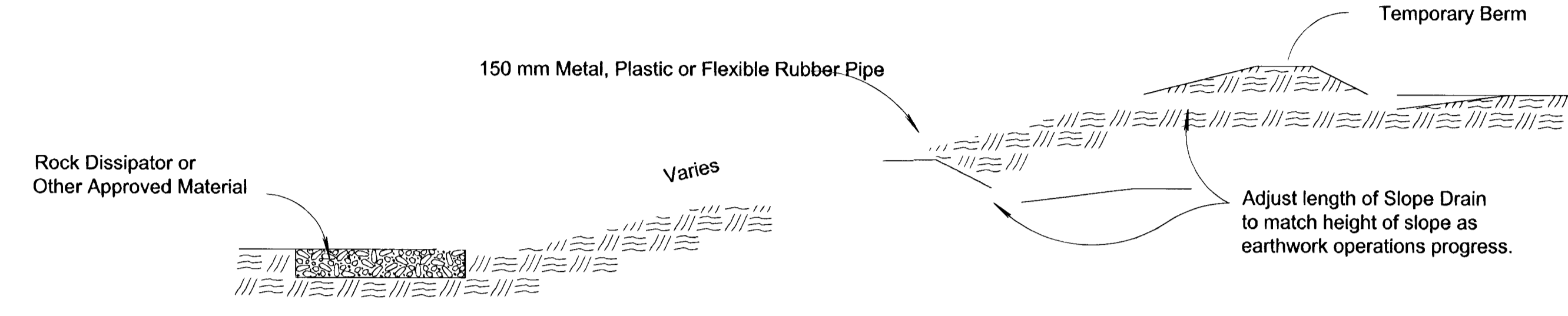


FWHA REGION NO.	STATE	PROJECT NO.	YEAR	SHEET NO.	TOTAL SHEETS
7	KANSAS	87 N-0194-01	2001	17	43

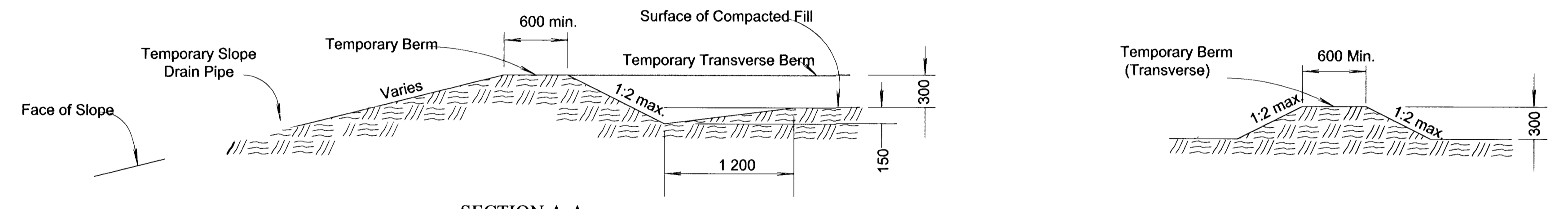
- NOTES:
- 1) Temporary Slope Drain and Temporary Berm may be used on either project foreslopes or project backslopes.
  - 2) Discharge of Slope Drains shall be into stabilized ditch or area, or into Sediment Basin.
  - 3) Pipe shall be secured in place as approved by Engineer.



TYPICAL PLAN VIEW OF TEMPORARY BERM AND TEMPORARY SLOPE DRAIN  
NO SCALE



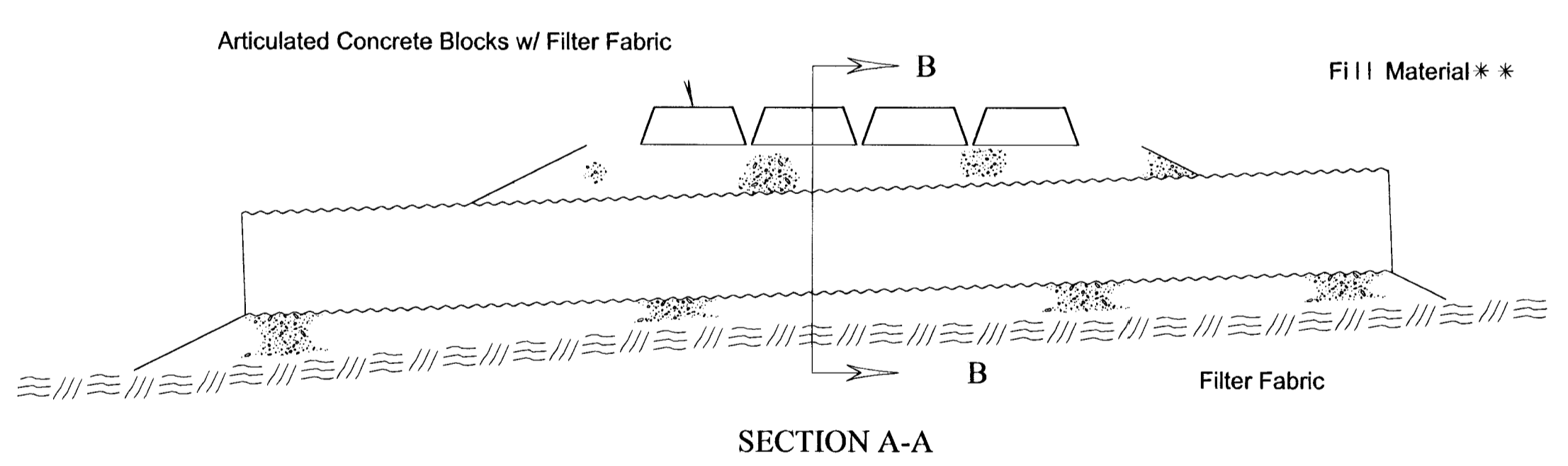
TYPICAL PROFILE OF TEMPORARY SLOPE DRAIN  
NO SCALE



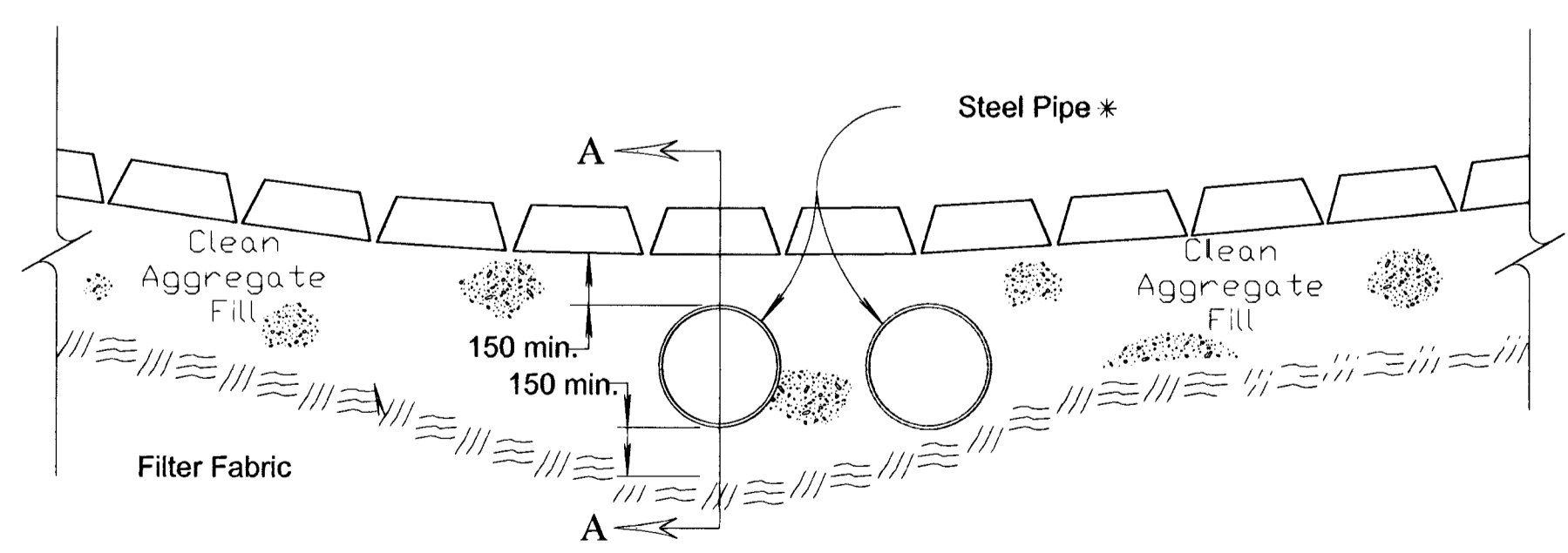
SECTION A-A  
NO SCALE

SECTION B-B  
NO SCALE

TYPICAL PROFILE OF TEMPORARY BERM  
NO SCALE



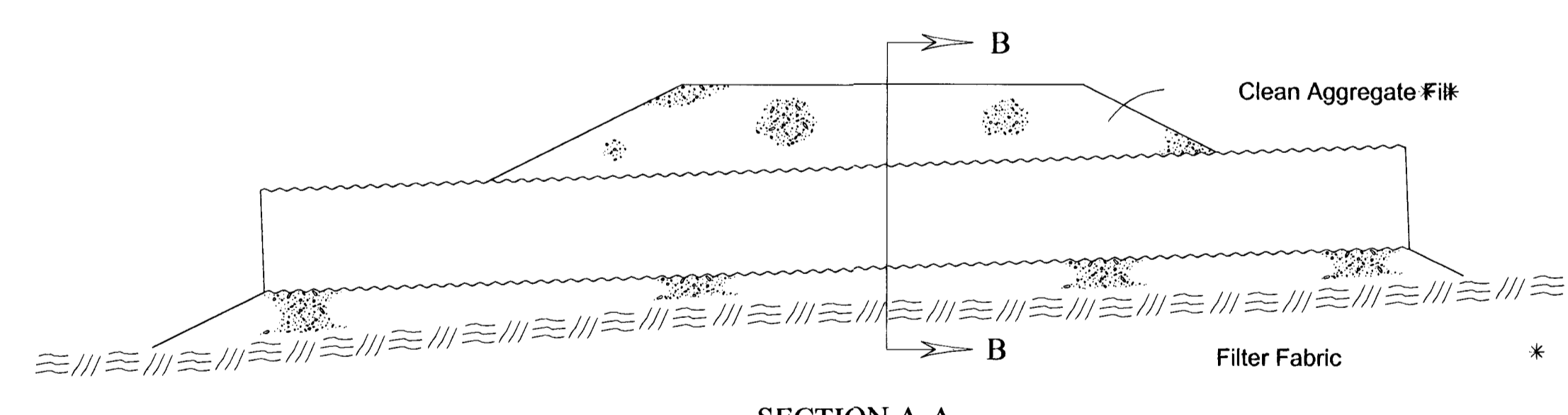
SECTION A-A



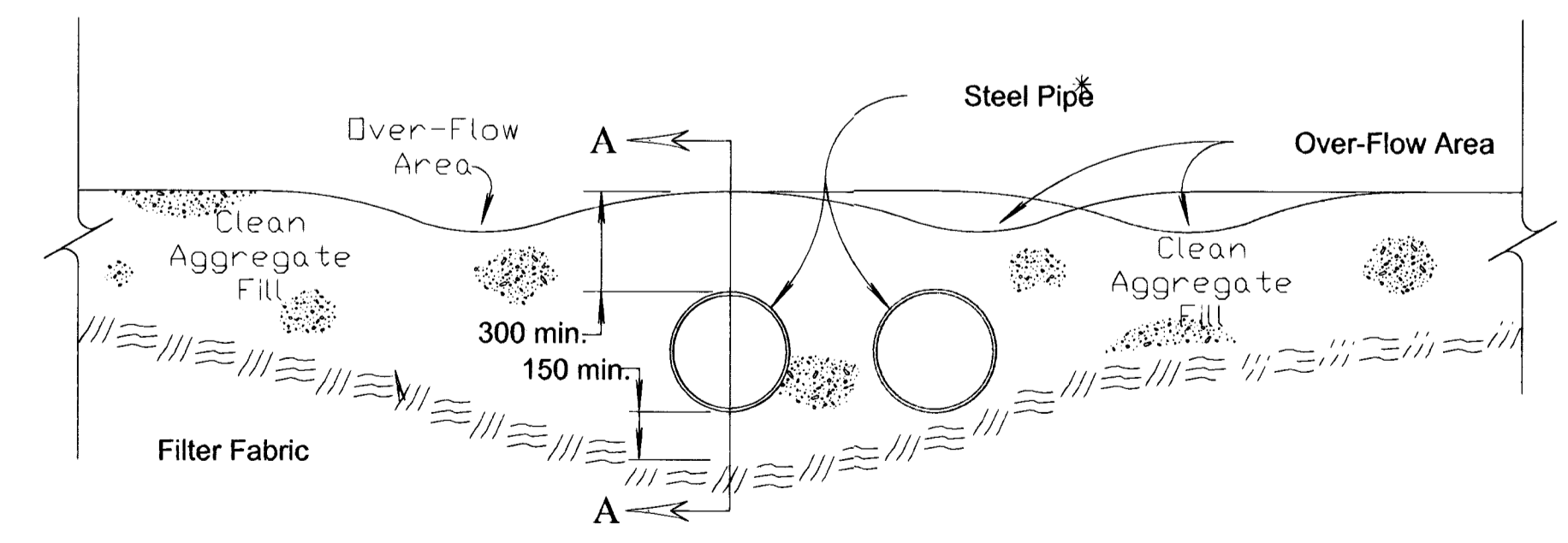
SECTION B-B

TEMPORARY STREAM CROSSING (ARTICULATED CONCRETE BLOCKS)  
NO SCALE

\* NOTE:  
Quantity, length and diameter of steel pipe to be determined by design flow calculations.



SECTION A-A



SECTION B-B

TEMPORARY STREAM CROSSING (AGGREGATE)  
NO SCALE

\* NOTE:  
Quantity, length and diameter of steel pipe to be determined by design flow calculations.

3					
2					
1		Revised Standard			
NO.	DATE	REVISIONS	BY	APPD	
KANSAS DEPARTMENT OF TRANSPORTATION TEMPORARY EROSION AND POLLUTION CONTROL TEMPORARY STREAM DRAIN TEMPORARY STREAM CROSSING (AGGREGATE) TEMP. STREAM CROSS. (ARTC. CONC. BLOCKS) LA852B SI					
DESIGNED		WCL	DETAILS	WCL	QUANTITIES
DESIGN CK.		RDR	DETAIL CK.	RDR	QUAN CK.
APPD		Richard D. Ross		TRACED	WCL
RDR		RDR		TRACE CK.	RDR