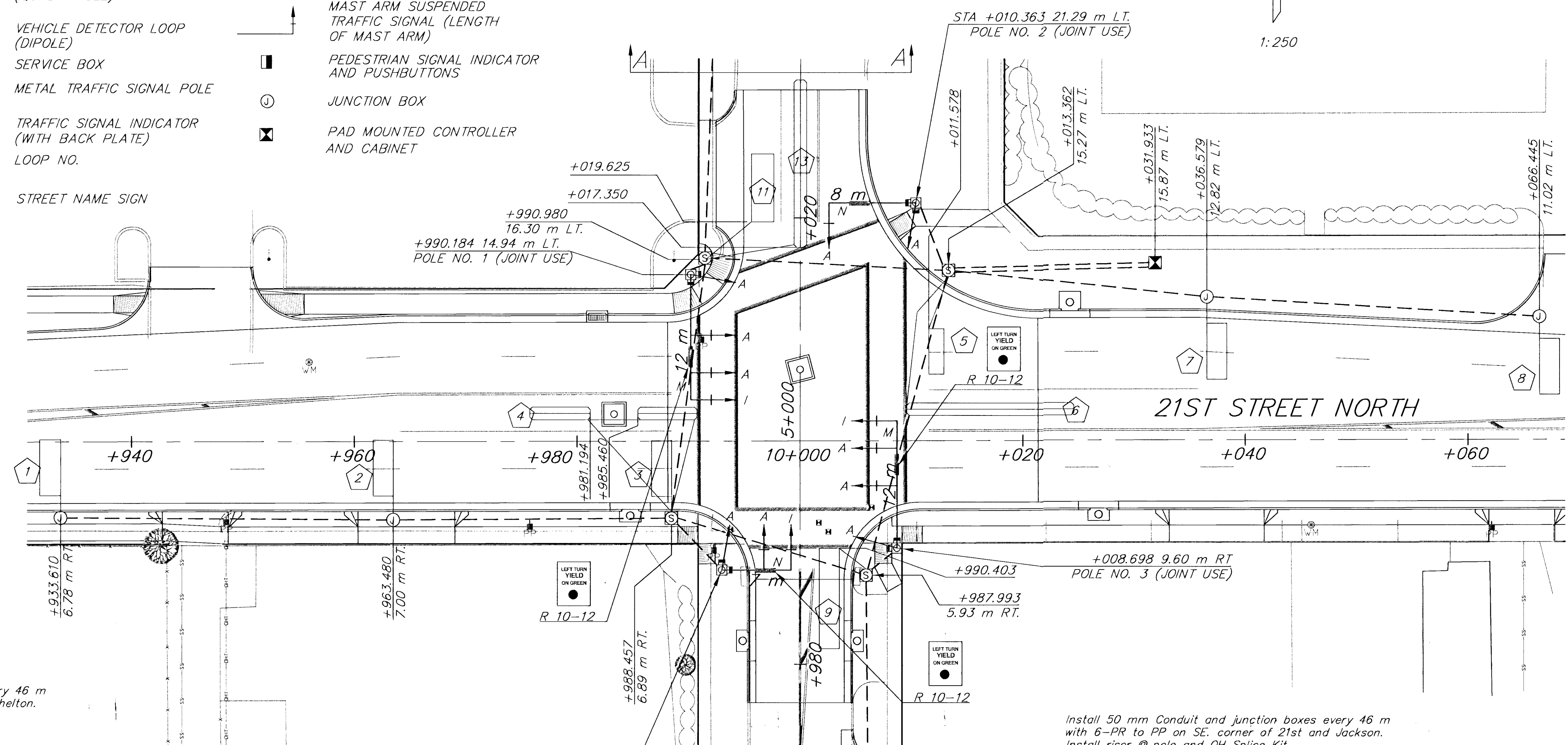
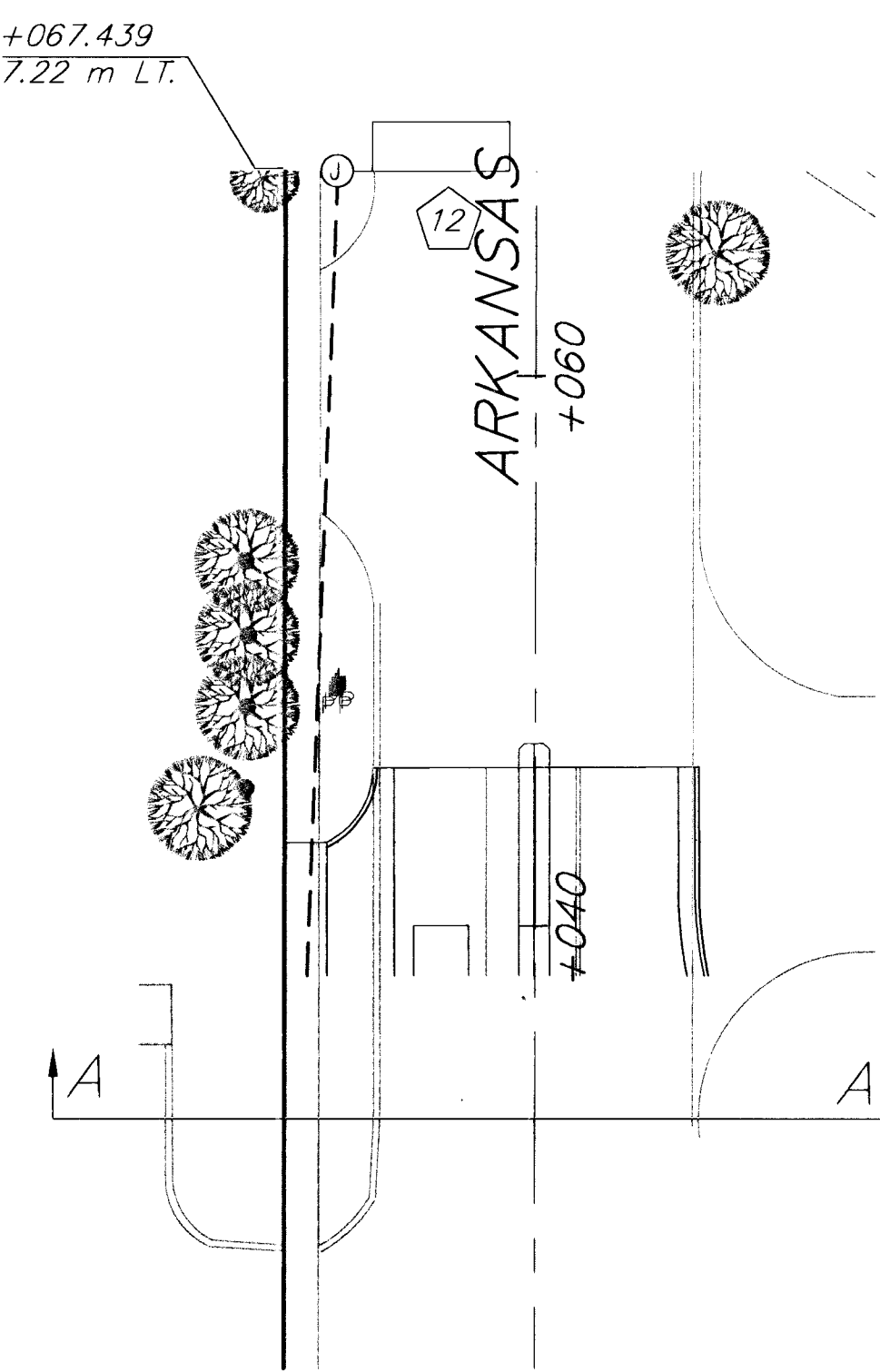
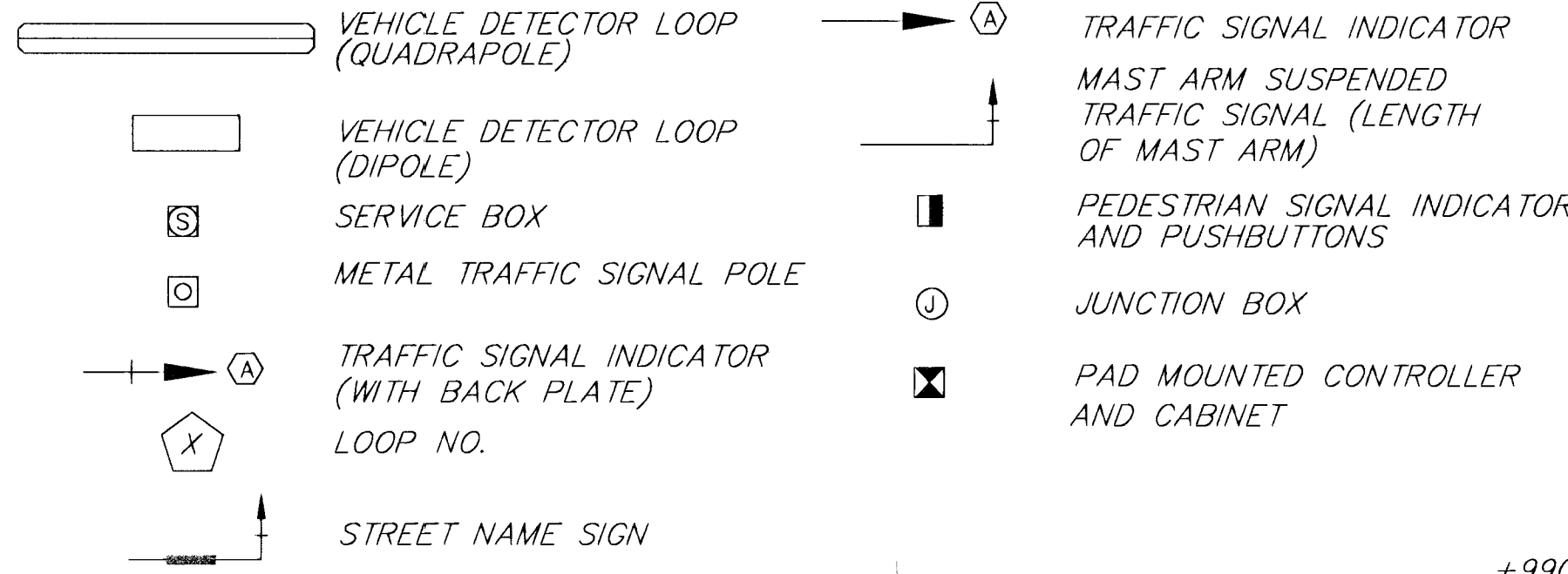


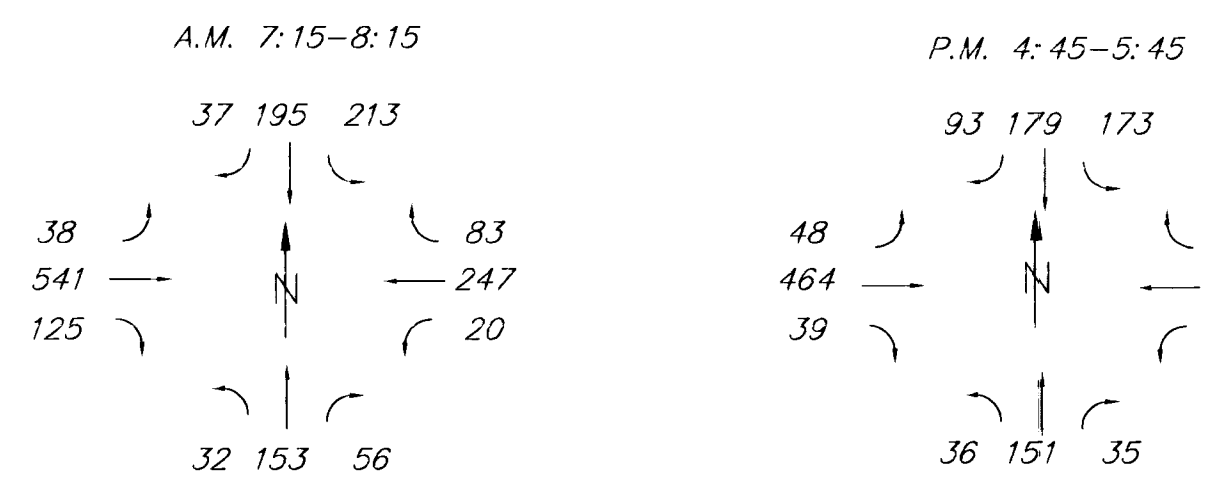
| FHWA REG. NO. | STATE | PROJECT NO. | YEAR | SHEET NUMBER | TOTAL SHEETS |
|---------------|--------|--------------|------|--------------|--------------|
| 7 | KANSAS | 87 N-0194-01 | 2001 | 20 | 43 |

LEGEND:



Install 50 mm Conduit and junction boxes every 46 m with 6-PR to PP on SE. corner of 21st and Shelton. Install riser @ pole and OH Splice Kit

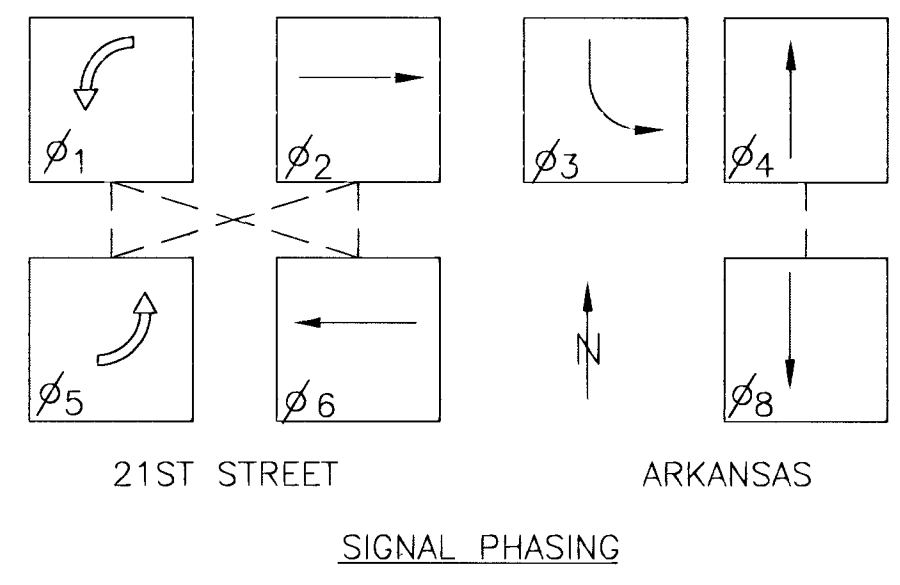
Install 50 mm Conduit and junction boxes every 46 m with 6-PR to PP on SE. corner of 21st and Jackson. Install riser @ pole and OH Splice Kit



| LOOP NO. | SIZE | NO. OF TURNS | MOVEMENT CALLED |
|----------|---------------|--------------|-----------------|
| 1 | 1.8 m x 5 m | 4 | 2 |
| 2 | 1.8 m x 5 m | 4 | 2 |
| 3 | 1.8 m x 5 m | 4 | 2 |
| 4 | 2-1.8 m x 6 m | 2-4-2 | 5 |
| 5 | 1.8 m x 5 m | 4 | 6 |
| 6 | 1.8 m x 15 m | 2-4-2 | 1 |
| 7 | 1.8 m x 5 m | 4 | 6 |
| 8 | 1.8 m x 5 m | 4 | 6 |
| 9 | 1.8 m x 9 m | 4 | 4 |
| 10 | 1.8 m x 4 m | 4 | 4 |
| 11 | 6 m x 1.8 m | 4 | 8 |
| 12 | 1.8 m x 4 m | 4 | 8 |
| 13 | 1.8 m x 15 m | 2-4-2 | 3 |

| INTERVAL | PHASE | | | | | | | | TIME CLOCK | | NORMAL DISPLAY | | | | | | | |
|------------|-------|----|-----|----|-----|-----|-----|-----|------------|--------|----------------|-------------|---|---|---|---|---|---|
| | 1 | 2 | 3 | 4 | 5 | 6 | 7 | 8 | C | F | 1 | 2 | 3 | 4 | 5 | 6 | 7 | 8 |
| MAX. | 0 | 30 | 60 | 30 | 60 | 30 | 60 | 60 | 0 | YEAR | VEH. RECALL | | | | | | | |
| MAX. 2 | 1 | 30 | 60 | 30 | 60 | 30 | 60 | 60 | 1 | MONTH | PED. RECALL | | | | | | | |
| WALK | 2 | | 8 | | 8 | | 8 | | 8 | 2 | DAY / MONTH | RED LOCK | | | | | | |
| FL. DW. | 3 | | 15 | | 18 | | 15 | | 18 | 3 | DAY / WEEK | YELLOW LOCK | | | | | | |
| MAX. INTL. | 4 | 6 | 10 | 6 | 10 | 6 | 10 | 10 | 4 | HOUR | PERMIT | | | | | | | |
| MIN. GREEN | 5 | 5 | 8 | 5 | 8 | 5 | 8 | 8 | 5 | MINUTE | PED. PHASES | | | | | | | |
| TBR | 6 | 1 | 15 | 1 | 15 | 1 | 15 | 15 | 6 | SECOND | LEAD PHASES | | | | | | | |
| TTR | 7 | 1 | 15 | 1 | 15 | 1 | 15 | 15 | 7 | | DBL. ENTRY | | | | | | | |
| | 8 | | | | | | | | 8 | | SEQUENTIAL | | | | | | | |
| PASSAGE | 9 | 1 | 2 | 1 | 2 | 1 | 2 | 2 | 9 | | STARTUP | | | | | | | |
| MIN. GAP | A | 1 | 1.5 | 1 | 1.5 | 1 | 1.5 | 1.5 | A | | OVERLAP A | | | | | | | |
| ADD ACT | B | 1 | 2 | 1 | 2 | 1 | 2 | 2 | B | | OVERLAP B | | | | | | | |
| YELLOW | C | 3 | 3.5 | 3 | 3 | 3.5 | 3 | 3 | C | | OVERLAP C | | | | | | | |
| RED CLR. | D | 1 | 1.5 | 1 | 1.5 | 1 | 1.5 | 1.5 | D | | OVERLAP D | | | | | | | |
| RED REV. | E | | | | | | | | E | | EXCLUSIVE | | | | | | | |
| WALK II | F | | | | | | | | F | | SIM GAP | | | | | | | |

- NOTES:**
- Contractor shall remove and stockpile and store on site for City of Wichita existing signals, signal poles & mast arms, controller, cabinet, and manhole covers. Contractor shall notify Traffic Department two weeks prior to start of construction.
 - Traffic to be carried through construction. See Construction Traffic Control Plan.
 - Contractor shall contact all utility companies which may be affected by this construction prior to beginning of construction.
 - Service Box, Junction Box and conduit runs are typical only and should be adjusted during installation to clear obstructions and facilitate wiring.
 - The traffic signal system shall be complete and the Contractor shall furnish and install all equipment necessary for the satisfactory operation of electrical apparatus and for the complete operation of traffic signal system whether specifically mentioned or not.
 - Longitudinal orientation of loops shall be adjusted so that no loop begins or ends within one 0.3 m of a transverse joint.



PROJECT NUMBER: 472-82783
 DESIGN: R/R
 DRAWN: R/R
 FILE: Signal
 DATE:
 SCALE: 1:250
 SHEET: 20 OF 43
 21ST AND ARKANSAS SIGNAL PLAN
 CITY OF WICHITA
 REVISION: 6/11/01