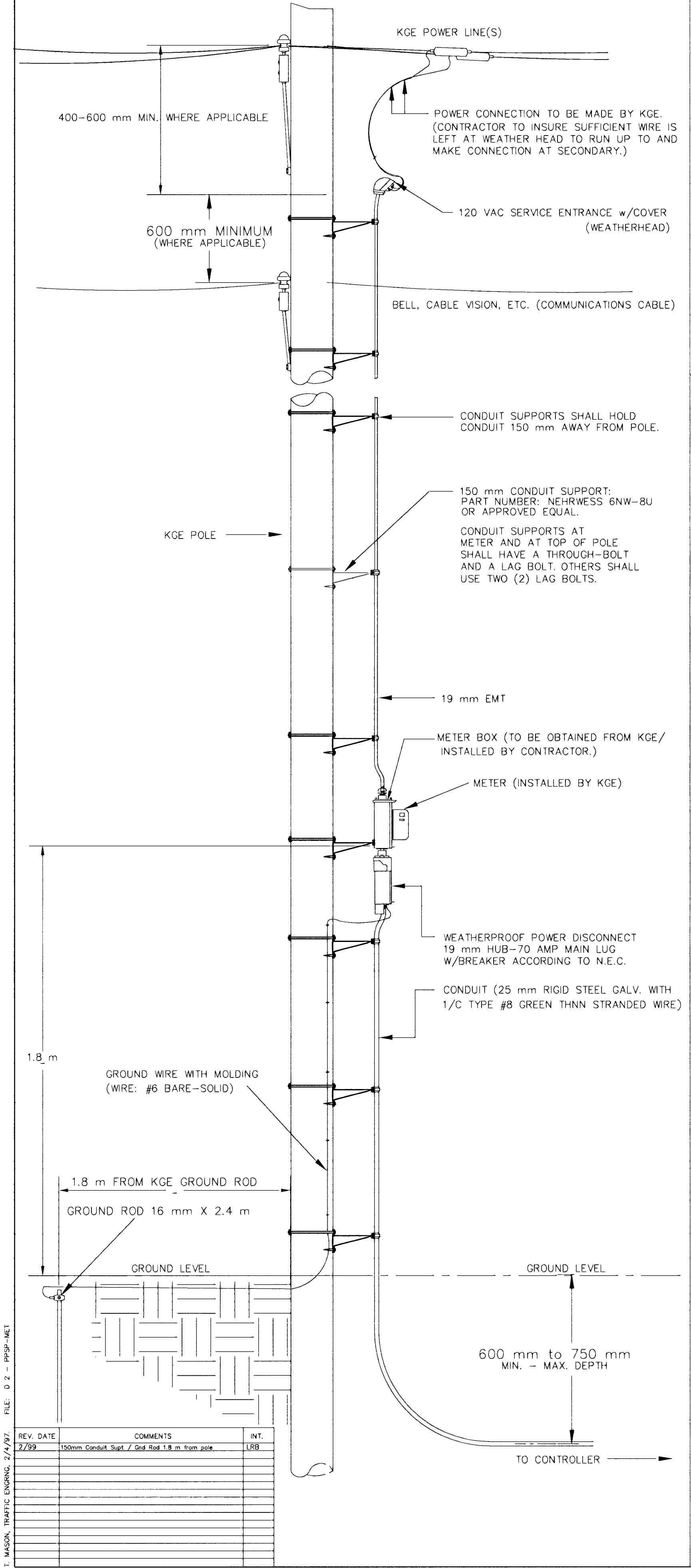
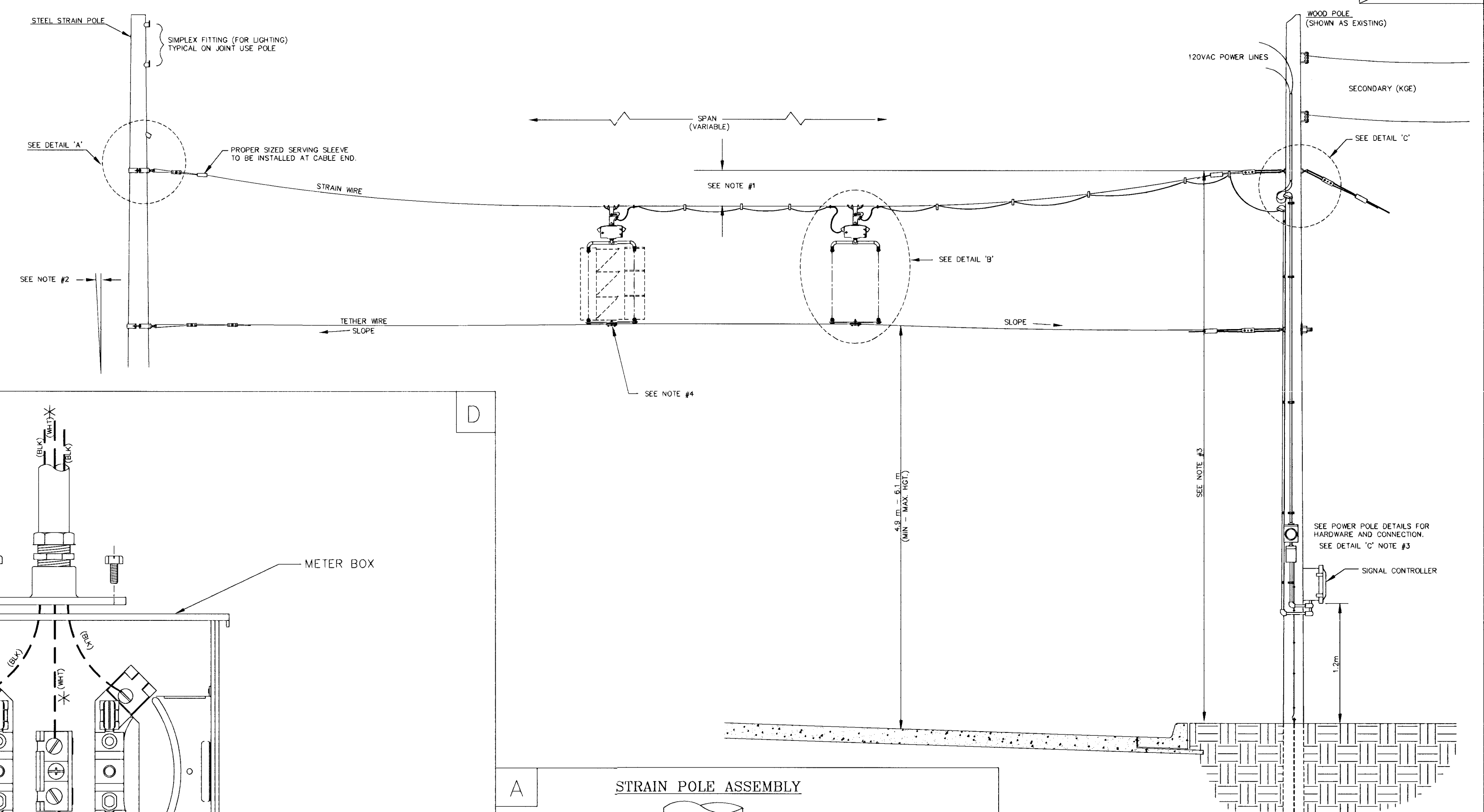


POWER POLE DETAILS



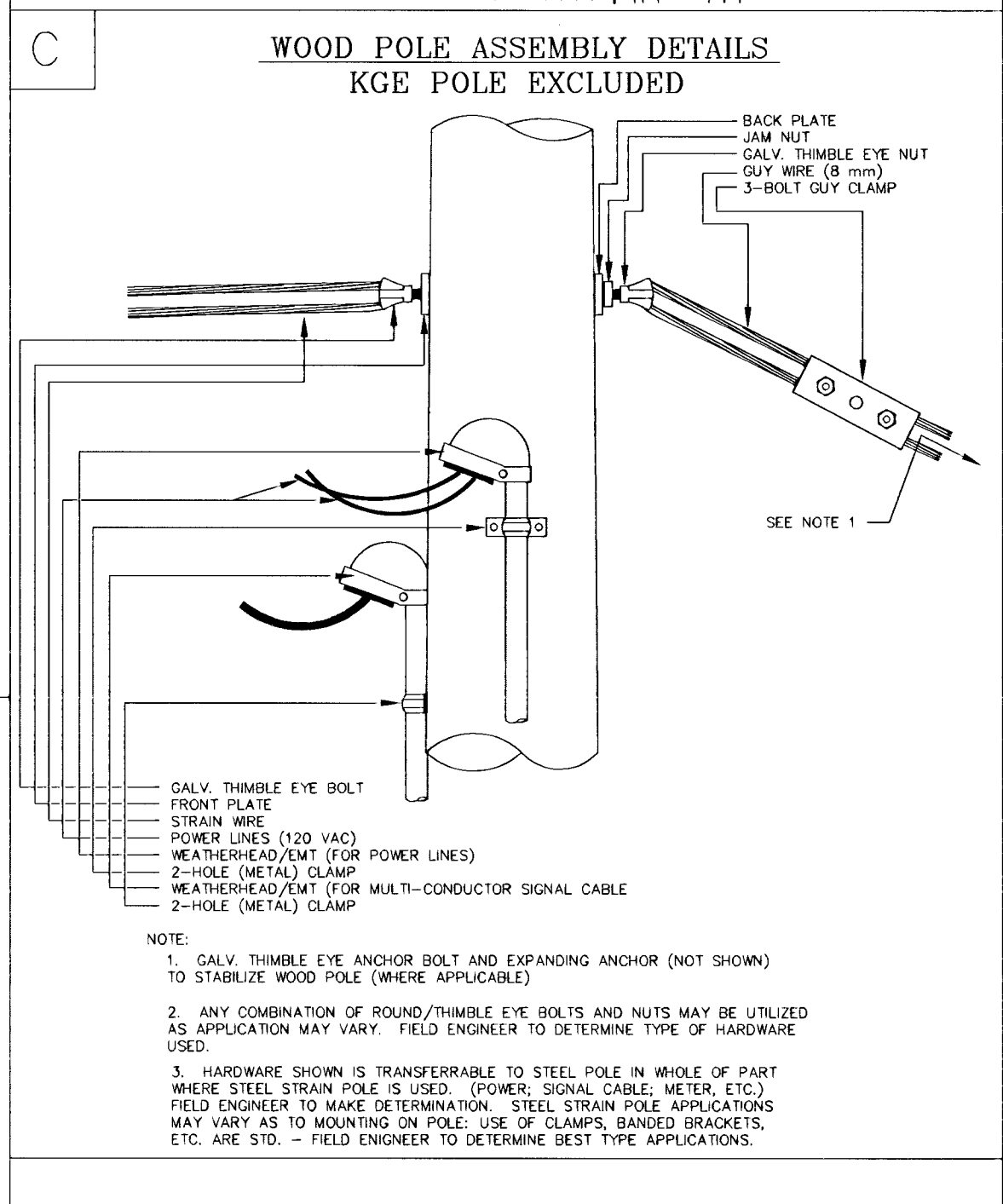
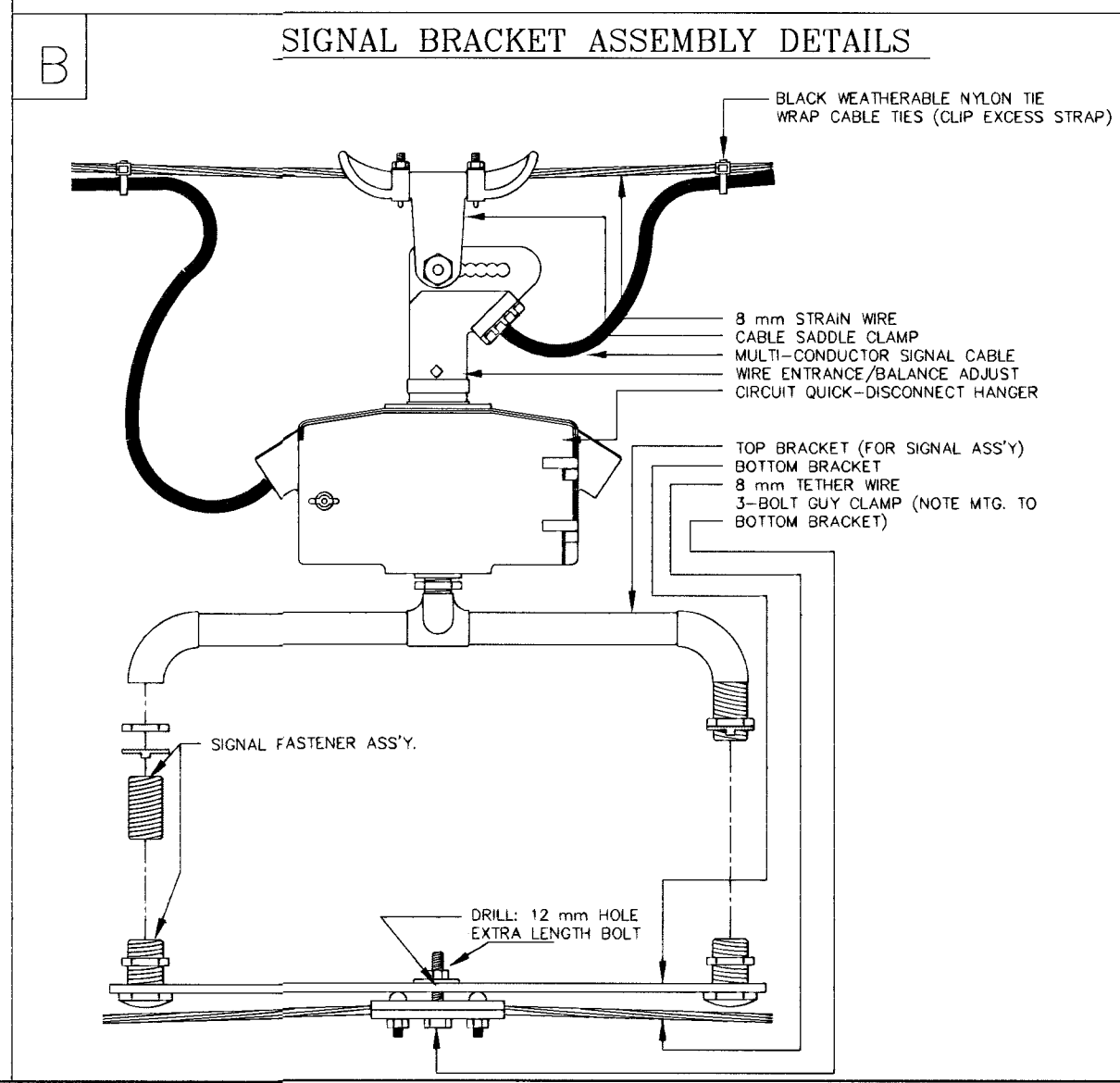
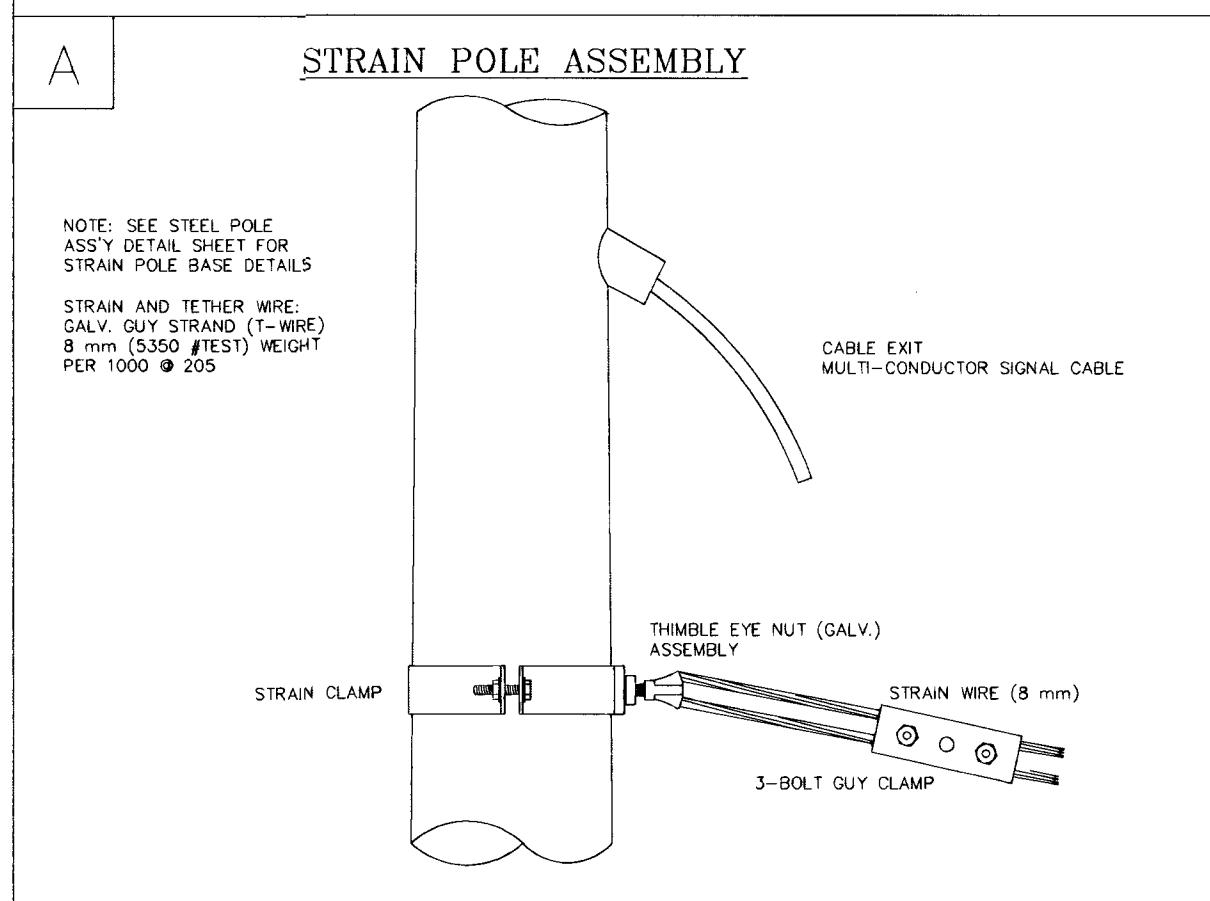
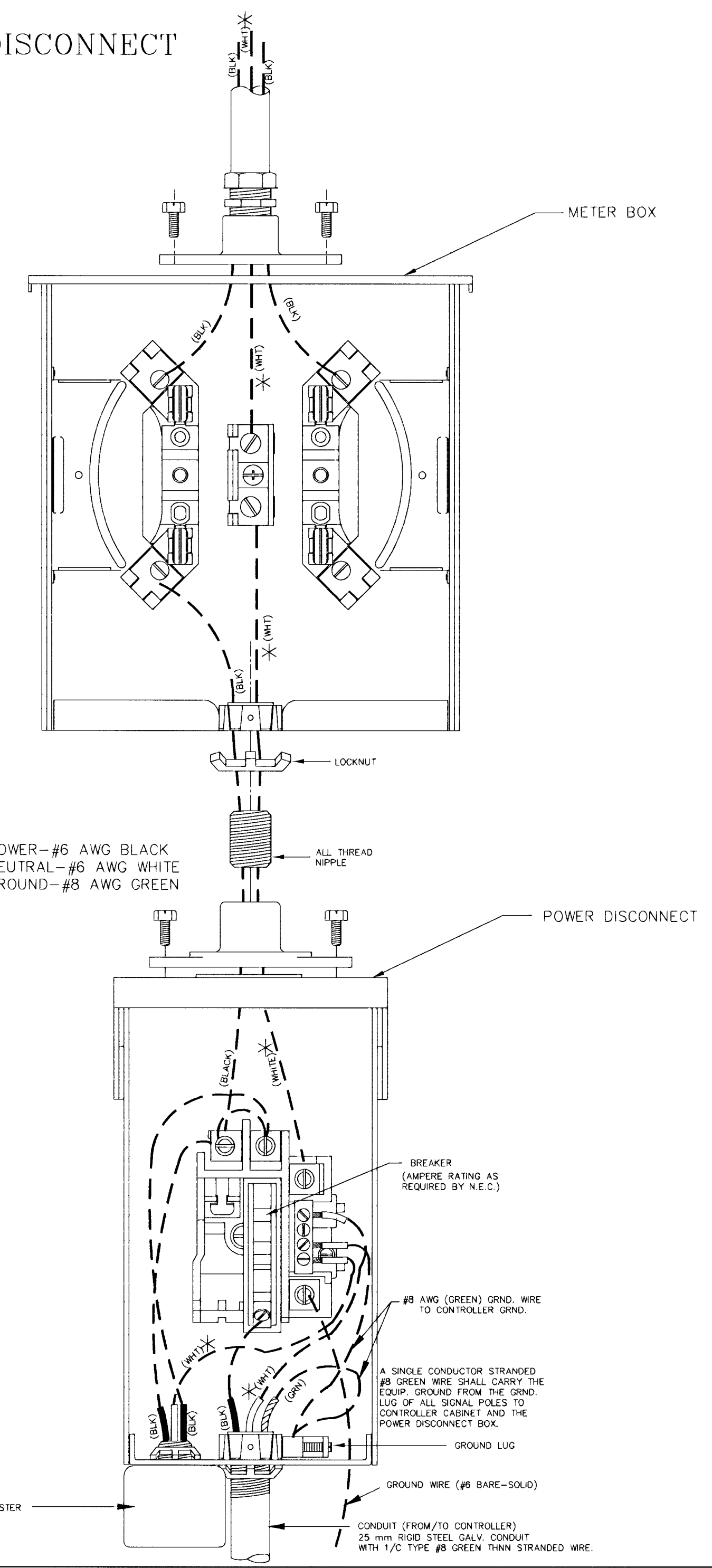
SPANWIRE ASSEMBLY DETAILS

1. MAX. SAG = 5% OF SPAN.
2. STANDARD BACKRAKE = 1.5'
3. HEIGHT OF STRAIN WIRE HOOK-UP TO BE DETERMINED BY FIELD ENGINEER. TRAFFIC SIGNAL CABLE TO BE SECURED TO STRAIN (SPAN) WIRE WEATHERABLE NYLON CABLE HANGERS (300 mm CTR.) DETAIL 'B'
4. TETHER CLAMP TO BE DESIGNED TO RELEASE UNDER 'HIGH WIND LOAD' TO PERMIT SIGNAL 'FREE SWING'.



METER BOX & POWER DISCONNECT DETAILS

* TO BE MARKED WITH WHITE TAPE



REV.	DATE	COMMENTS	INT.
2/29		150mm Conduit Spd. / 2nd Spd 1.8 m from pole	UBB

PROJECT DESCRIPTION
POWER POLE AND SPAN POLE ASSEMBLY DETAILS
STANDARD APPLICATIONS : PROJECT NUMBER

DRAWN BY: TM APPROVED BY: REWSED: LRB
DATE: Feb. 96 DATE: 2/26/99

CITY OF WICHITA
DEPARTMENT OF PUBLIC WORKS
TRAFFIC ENGINEERING DIVISION SCALE
RANDALL W. HOSKINS, P.E., TRAFFIC ENGINEER NO SCALE