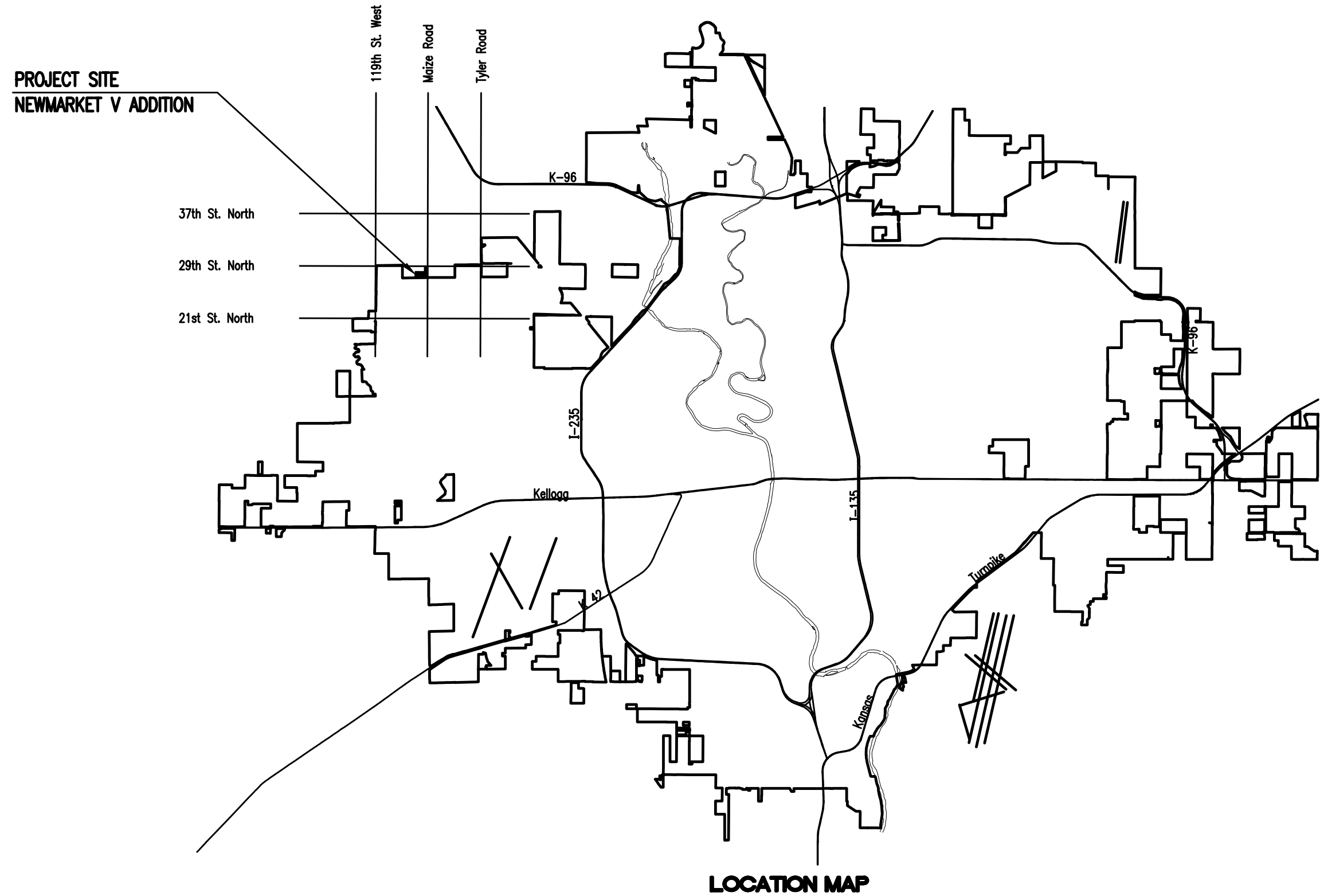


# LATERAL 7, MAIN 6 OF THE NORTHWEST INTERCEPTOR SEWER TO SERVE NEWMARKET V ADDITION IN THE CITY OF WICHITA, KANSAS

CITY OF WICHITA PROJECT NO. 468-85130  
OCA NO. 744424  
GARY JANZEN, P.E. - CITY ENGINEER

Dutton Construction - Contractor  
J. Brand - City of Wichita, Field Project Engineer  
T. Dvorak - City of Wichita, Inspector  
Stub & Plug  
As-built  
Release Date: 12/8/2016  
pdf: 12/8/2016 apr



**DEVELOPER CONTACT**  
MR. DAVID HAMBRICK  
NEWMARKET V, L.L.C.  
727 N. WACO, SUITE 400  
WICHITA, KANSAS 67203  
(316) 263-3201

**INDEX OF SHEETS**

|                 |                               |
|-----------------|-------------------------------|
| SHEET NO. 1     | TITLE SHEET                   |
| SHEET NO. 2     | KEY MAP AND GENERAL NOTES     |
| SHEET NO. 3     | PLAT BUBBLE MAP (NEWMARKET V) |
| SHEET NO. 4     | SANITARY SEWER BUBBLE MAP     |
| SHEET NO. 5-6   | PLAN/PROFILE                  |
| SHEET NO. 7     | STANDARD MANHOLE DETAILS      |
| SHEET NO. 8     | FRAME & COVER DETAILS         |
| SHEET NO. 9     | RISER DETAILS                 |
| SHEET NO. 10    | EROSION CONTROL PLAN          |
| SHEET NO. 11-13 | SOIL EROSION BMP DETAILS      |

**SEPTEMBER 2016**

PLANS PREPARED BY  
**PROFESSIONAL ENGINEERING CONSULTANTS, P.A.**  
ENGINEERS  
WICHITA, KANSAS



09-02-2016 4:59:54 PM by CSI  
Plot Scale 1:1 09-07-2016 2:56:12 PM by CSI  
U:\Wichita-Civil\2016\160626\000\Drawings\160626-000-001-TITLE

© 29TH ST. N = SECTION LINE

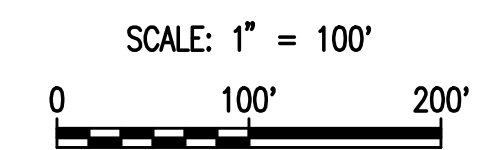
NE Corner, Sec. 6, T27S, R1W

MAIZE ROAD

SE Corner, NE 1/4 Sec. 6, T27S, R1W

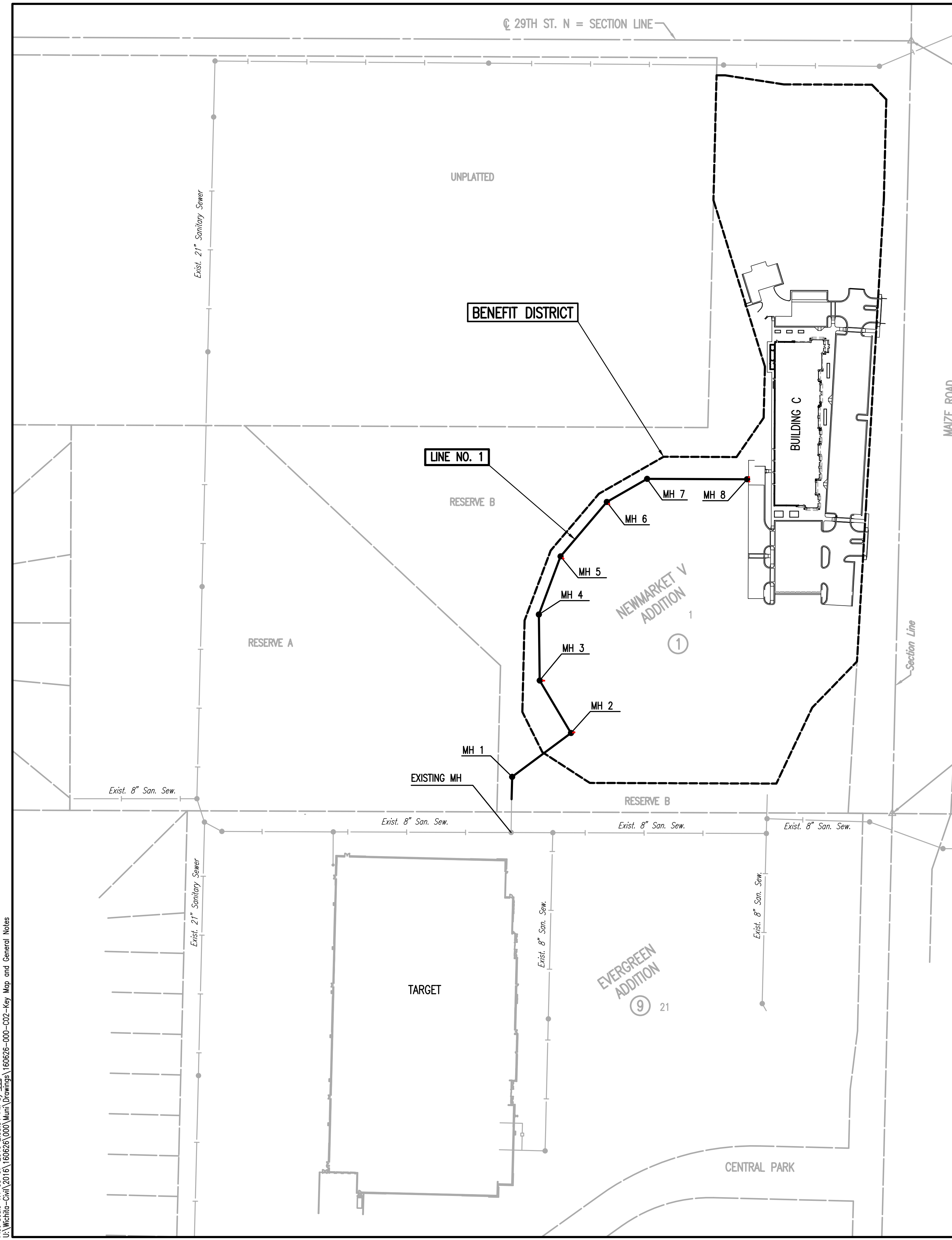
GENERAL NOTES

- ALL CONSTRUCTION AND MATERIALS TO COMPLY WITH CITY OF WICHITA SPECIFICATIONS AND STANDARDS.
- ALL ELEVATIONS SHOWN ARE NAVD 88 DATUM.
- THE CONTRACTOR SHALL LIMIT THE EXTENT OF TRENCH TO REMAIN OPEN OVERNIGHT AND WEEKENDS TO LESS THAN 50 FEET.
- AT LEAST 72 HOURS PRIOR TO BEGINNING EXCAVATION (EXCLUDING WEEKENDS AND HOLIDAYS), THE CONTRACTOR SHALL CONTACT THE KANSAS ONE-CALL SYSTEM, A UTILITY LOCATION SERVICE, AT (316) 687-2470 OR 811 TO REQUEST THE LOCAL UTILITY COMPANIES MARK ANY EXISTING LINES WITHIN THE PROJECT AREA.  
THE CONTRACTOR MUST NOTIFY THE FOLLOWING IN CASE OF AN EMERGENCY:  
EMERGENCY DISPATCH 911  
COX COMMUNICATIONS 1(800)778-9140  
WESTAR ENERGY 1(800)383-1183  
BLACK HILLS ENERGY 1(800)694-8989  
AT&T 1(800)286-8313  
CITY OF WICHITA WATER DEPARTMENT 262-6000  
CITY OF WICHITA SEWER MAINTENANCE 262-6000
- UNDERGROUND UTILITY SERVICE LINES AND OVERHEAD UTILITY POLE LINES ARE TO BE ADJUSTED AS NECESSARY BY OTHERS PRIOR TO CONSTRUCTION UNLESS THE PLANS SPECIFICALLY CALL FOR THEIR ADJUSTMENT BY THE CONTRACTOR OR UNLESS THE PLANS SPECIFICALLY IDENTIFY A UTILITY TO BE ADJUSTED BY ITS OWNER DURING CONSTRUCTION. EXISTING UTILITIES AND THEIR LOCATIONS, AS SHOWN ON THE PLANS, REPRESENT THE BEST INFORMATION OBTAINABLE FOR THE DESIGN. THE CONTRACTOR WILL BE REQUIRED TO WORK AROUND EXISTING UTILITIES WITHIN THE RIGHT-OF-WAY WHICH DO NOT CONFLICT WITH PROPOSED CONSTRUCTION.
- THE CONTRACTOR SHALL BE RESPONSIBLE FOR PRESERVING PROPERTY IRONS. THE CONTRACTOR WILL BE REQUIRED TO RE-ESTABLISH ANY PROPERTY IRONS WHICH ARE DAMAGED OR DESTROYED BY HIS CONSTRUCTION OPERATIONS. SUCH IRONS SHALL BE RE-ESTABLISHED BY A LICENSED LAND SURVEYOR IN ACCORDANCE WITH STATE LAWS. ALL COSTS FOR THIS WORK SHALL BE SUBSIDIARY TO THE LUMP SUM PRICE BID FOR "SITE RESTORATION".
- CONTRACTOR SHALL PROVIDE POSITIVE DRAINAGE AWAY FROM ALL MANHOLE COVERS.
- MANHOLES SHALL BE CONSTRUCTED IN ACCORDANCE WITH THE CITY OF WICHITA STANDARD SPECIFICATIONS AND THE STANDARD DETAIL DRAWINGS.
- RUBBLE FROM THE REMOVAL OF MISCELLANEOUS STRUCTURES INCLUDING ANY TREES REMOVED, TREE TRIMMINGS, AND EXCESS EXCAVATION WHICH IS TO BE WASTED SHALL BE DISPOSED OF ON SITES PROVIDED BY THE CONTRACTOR. THESE SITES SHALL ALSO BE APPROVED BY THE ENGINEER AS TO SUITABILITY, APPEARANCE, AND SITE LOCATION. LOCATIONS THAT, IN THE OPINION OF THE ENGINEER, WILL LEAVE AN UNSIGHTLY APPEARANCE WILL NOT BE APPROVED. ALL DISPOSAL SITES MUST BE APPROVED BY THE KANSAS DEPARTMENT OF HEALTH AND ENVIRONMENT. MATERIAL EITHER STOCKPILED OR DISPOSED OF IN A FLOOD PLAIN WILL REQUIRE A KANSAS STATE BOARD OF AGRICULTURE PERMIT. ANY MATERIAL DUMPED IN WATERS OF THE UNITED STATES OR WETLANDS IS SUBJECT TO U.S. CORPS OF ENGINEERS PERMITTING REGULATIONS. ANY MATERIAL BURIED OR STOCKPILED BEYOND APPROVED CONSTRUCTION LIMITS MAY REQUIRE ARCHAEOLOGICAL INVESTIGATIONS UNLESS BURIED IN A PREVIOUSLY APPROVED DISPOSAL LOCATION.
- ALL APPROVED EXCESS EXCAVATION WHICH IS TO BE WASTED SHALL BE STOCKPILED WITHIN NEWMARKET V ADDITION AT NO ADDITIONAL COST TO THE OWNER. STOCKPILE LOCATIONS SHALL BE AS DIRECTED BY THE DEVELOPER AND IN ACCORDANCE WITH GENERAL NOTE NO. 9 ABOVE.
- ALL LAWN/TURF AREAS DISTURBED BY CONSTRUCTION OF THE PROPOSED IMPROVEMENTS SHALL BE RESTORED WITH THE SAME GRASS/SOD AS EXISTING. RESTORATION OF DISTURBED AREAS SHALL INCLUDE, BUT NOT BE LIMITED TO, TOP SOIL PREPARATION, SEEDING, MULCH, AND/OR RESEEDING. ALL SEEDING/SODDING WORK SHALL BE IN ACCORDANCE WITH THE CITY OF WICHITA STANDARD SPECIFICATIONS AND THE CITY OF WICHITA ADMINISTRATIVE REGULATION NO. AR6.5 WHICH GOVERNS CLEANUP AND RESTORATION OR REPLACEMENT FOLLOWING CONSTRUCTION. ALL COSTS FOR THIS WORK SHALL BE SUBSIDIARY TO THE LUMP SUM PRICE BID FOR "SITE RESTORATION".
- THE CONTRACTOR SHALL SEED ALL AREAS DISTURBED BY CONSTRUCTION ACTIVITIES WITH TEMPORARY RYE GRASS. RYE GRASS SEED SHALL BE PLANTED AT A MINIMUM RATE OF SIX (6) POUNDS PER ONE THOUSAND (1,000) SQUARE FEET. THIS TEMPORARY SEEDING MAY BE OMITTED ONLY IF OTHER SEEDING IS REQUIRED IN ACCORDANCE WITH GENERAL NOTE NO. 11 ABOVE. TEMPORARY SEEDING OR PERMANENT SEEDING/SODDING SHALL BE APPLIED WITHIN 14 DAYS AFTER THE AREA HAS BEEN DISTURBED.
- THE CONTRACTOR SHALL AVOID REMOVAL OR TRIMMING OF ANY TREES OR SHRUBS WHERE POSSIBLE. WHERE THE CONTRACTOR BELIEVES THE REMOVAL OR TRIMMING IS UNAVOIDABLE, HE SHALL COORDINATE SUCH WORK WITH THE ENGINEER. COSTS FOR TREE/SHRUB REMOVAL AND TRIMMING REGARDLESS OF SIZE SHALL BE CONSIDERED SUBSIDIARY TO THE LUMP SUM PRICE BID FOR "SITE CLEARING".
- THE CONTRACTOR SHALL PREVENT ANY CONSTRUCTION DEBRIS FROM ENTERING THE EXISTING SANITARY SEWER DURING CONSTRUCTION.
- THE CONTRACTOR SHALL GIVE ALL PROPERTY OWNERS AND/OR TENANTS OF DEVELOPED PROPERTY ABUTTING THE CONSTRUCTION OF THIS PROJECT A MINIMUM OF TEN (10) DAYS ADVANCE NOTICE PRIOR TO START OF CONSTRUCTION.
- THE CONTRACTOR IS REQUIRED TO MAINTAIN CONTINUOUS FLOW OF SEWAGE IN EXISTING MAINS AT ALL TIMES.
- THE CONTRACTOR SHALL NOT BURY MANHOLES THAT HAVE RIM ELEVATIONS WHICH ARE LOWER THAN EXISTING GROUND AT THE MANHOLE. THE GROUND AROUND SUCH MANHOLES AND ALONG THE SEWER ALIGNMENT SHALL BE BACKFILLED TO THE APPROXIMATE ELEVATION OF THE PROPOSED GROUND ELEVATION SHOWN ON THE PLAN/PROFILE SHEETS. THE CONTRACTOR SHALL PROVIDE DRAINAGE AWAY FROM THESE MANHOLES AND SEWER LINES BY CONSTRUCTION OF TEMPORARY DITCHES OR SLOPING THE GROUND AS REQUIRED. ALL COSTS FOR THIS WORK SHALL BE CONSIDERED SUBSIDIARY TO THE INSTALLED BID PRICE FOR MANHOLES OR PIPE.
- THE CONTRACTOR SHALL PROVIDE MOUNDING EARTH AT MANHOLES AND CLEANOUTS THAT HAVE TOP ELEVATIONS GREATER THAN 1 FOOT ABOVE EXISTING GRADE, AS SHOWN ON THE PLANS. COSTS FOR MOUNDING SHALL BE CONSIDERED SUBSIDIARY TO THE PRICE BID PER EACH FOR MANHOLES.
- INTERURBAN TRAFFIC GENERATED OUTSIDE THE PROJECT AREA AND LOCAL BUSINESS OR RESIDENTIAL TRAFFIC GENERATED WITHIN THE PROJECT AREA ARE TO BE CARRIED THROUGH CONSTRUCTION AS FURTHER PROMULGATED BY PROJECT SPECIAL PROVISIONS. THE CONTRACTOR SHALL UTILIZE BARRICADES, SIGNS, GUARDS, AND FLAGMEN IN ACCORDANCE WITH THE MANUAL ON UNIFORM TRAFFIC CONTROL DEVICES.
- WHERE INDICATED IN THE PLANS, THE SANITARY SEWER EXCAVATION SHALL BE SAND FILLED AND FLUSHED (JETTED AND VIBRATED) WITH WATER PER THE REQUIREMENTS LISTED IN THE STANDARD SPECIFICATIONS FOR THE CITY OF WICHITA, UNLESS FLOWABLE FILL OR OTHER IMPROVED BACKFILL MATERIAL IS OTHERWISE SPECIFIED. ALL COSTS FOR SAND FILLING AND FLUSHING SHALL BE INCLUDED IN THE UNIT PRICE BID FOR "JETTED SAND BACKFILL".
- THE CONTRACTOR SHALL INSTALL AND/OR MAINTAIN EROSION CONTROL METHODS AS SPECIFIED ON SHEETS 10-13. THE GENERAL LOCATION OF THE REQUIRED EROSION CONTROL IS ILLUSTRATED ON SHEET 10. THE SANITARY SEWER CONTRACTOR SHALL BE RESPONSIBLE FOR MAINTAINING THE EROSION CONTROL SHOWN THROUGH THE COMPLETION OF THIS PROJECT. INSTALLATION OF THESE BMP'S DOES NOT RELIEVE THE CONTRACTOR OF THE RESPONSIBILITY OF ABATING SOIL EROSION.
- THE CONTRACTOR SHALL NOT START WORK ON THE PROJECT UNTIL THE PROJECT INSPECTOR IS ASSIGNED TO THE PROJECT AND IS PRESENT ON THE SITE. ANY WORK DONE WITHOUT INSPECTION WILL BE REQUIRED TO BE UNCOVERED FOR INSPECTION.
- EACH BIDDER SHALL VISIT THE SITE OF THE PROJECT BEFORE SUBMITTING THE PROPOSAL FOR THIS WORK SO THAT HE WILL BE FULLY INFORMED OF THE EXISTING FIELD CONDITIONS AND THE OBSTACLES WHICH MIGHT BE ENCOUNTERED. UPON AWARD OF THE CONTRACT THE CONTRACTOR WILL NOT BE GRANTED ANY ADDITIONAL COMPENSATION WITH REGARDS TO TIME AND MONEY FOR CONDITIONS THAT MAY HAVE BEEN EVALUATED DURING ANY INSPECTION OF THE SITE.



LEGEND

- EXISTING SANITARY SEWER
- PROPOSED SANITARY SEWER
- EXISTING SANITARY SEWER w/MANHOLE
- PROPOSED SANITARY SEWER w/MANHOLE



SEE SHEET NO. 3 FOR PLAT COORDINATES AND SEE SHEET NO. 4 FOR SANITARY SEWER COORDINATES

|             |   |          |                |              |
|-------------|---|----------|----------------|--------------|
|             | No.   | Revision | By             | Date         |
|             | <b>LATERAL 7, MAIN 6</b><br><b>OF THE NORTHWEST INTERCEPTOR SEWER</b><br><b>KEY MAP AND GENERAL NOTES</b><br>GARY JANZEN, P.E. - CITY ENGINEER<br>CITY OF WICHITA PROJECT NO. 468-85130 |          |                |              |
|             |   |          |                |              |
|             | PROFESSIONAL ENGINEERING CONSULTANTS, P.A.<br>303 SOUTH TOPEKA WICHITA, KS 67202<br>316-262-2691 www.pec1.com   |          |                |              |
| Designed by | CSB, SAD  | Job No.  | 35-160626-0-42 | Sht. 2 of 13 |
| Drawn by    | RFT, GM   | Date     | APRIL 2016     |              |

Sowed 09-07-2016 1:58:15 PM by CSI  
 Plot Scale 1:1 09-07-2016 2:55:14 PM by CSI  
 U:\Wichita-Civil\2016\160626\000\Main\Drawings\160626-000-Key Map and General Notes

# NEWMARKET V ADDITION

## AN ADDITION TO WICHITA, SEDGWICK COUNTY, KANSAS

STATE OF KANSAS }  
 COUNTY OF SEDGWICK } SS

WE, PROFESSIONAL ENGINEERING CONSULTANTS, P.A., ENGINEERS AND SURVEYORS IN AFORESAID STATE AND COUNTY, DO HEREBY CERTIFY THAT OF THIS 14<sup>th</sup> DAY OF May, 2008, WE HAVE SURVEYED

AND PLATTED NEWMARKET V ADDITION, AN ADDITION TO WICHITA, SEDGWICK COUNTY, KANSAS, INTO A LOT, A BLOCK, AND RESERVES THE SAME BEING DESCRIBED AS FOLLOWS:

PART OF THE NORTH 1/2 OF THE N.E. 1/4, SECTION 6, TOWNSHIP 27 SOUTH, RANGE 1 WEST OF THE 6TH P.M. DESCRIBED AS:

BEGINNING AT THE NORTHEAST CORNER OF SECTION 6, TOWNSHIP 27 SOUTH, RANGE 1 WEST OF THE 6TH P.M., SEDGWICK COUNTY, KANSAS, THENCE BEARING N89°46'15"W, ALONG THE NORTH LINE OF SAID N.E. 1/4, A DISTANCE OF 330.00 FEET; THENCE BEARING S01°24'27"W, PARALLEL WITH THE EAST LINE OF SAID N.E. 1/4, A DISTANCE OF 660.00 FEET; THENCE BEARING N89°46'15"W, PARALLEL WITH THE NORTH LINE OF SAID N.E. 1/4, A DISTANCE OF 1,083.94 FEET; THENCE BEARING S00°12'44"W, A DISTANCE OF 856.19 FEET TO THE SOUTH LINE OF THE NORTH 1/2 OF THE N.E. 1/4 AND THE NORTH LINE OF EVERGREEN ADDITION TO WICHITA, SEDGWICK COUNTY, KANSAS; THENCE BEARING S89°47'16"E, ALONG THE NORTH LINE OF EVERGREEN ADDITION, A DISTANCE OF 1,400.26 FEET TO THE S.E. CORNER OF THE NORTH 1/2 OF THE N.E. 1/4, SECTION 6; THENCE BEARING N1°24'27"E, A DISTANCE OF 1,315.92 FEET TO THE POINT OF BEGINNING.

ALL PUBLIC EASEMENTS LYING WITHIN THE ABOVE DESCRIBED TRACT OF LAND ARE HEREBY VACATED AND REPLATTED BY VIRTUE OF KSA 12-512(b) AMENDED.

**JAMES R. BECKETT**  
 REGISTERED PROFESSIONAL SURVEYOR  
 No. 832  
 KANSAS  
 PROFESSIONAL ENGINEERING CONSULTANTS, P.A.

ALL ABUTTERS RIGHT OF ACCESS TO AND FROM 29TH STREET NORTH OVER AND ACROSS THE NORTH PROPERTY LINE, AND TO AND FROM MAIZE ROAD OVER AND ACROSS THE EAST PROPERTY LINE IS HEREBY GRANTED TO THE CITY OF WICHITA, PROVIDED HOWEVER THAT THERE SHALL BE ACCESS TO 29TH STREET NORTH AT 1-OPENING AND ACCESS TO MAIZE ROAD AT 3-OPENINGS. ALL ACCESS OPENINGS SHALL BE IN ACCORDANCE WITH MINIMUM SPACING REQUIREMENTS OF THE WICHITA/SEDGWICK COUNTY ACCESS MANAGEMENT STANDARDS.

THE STREET DEDICATION ALONG THE NORTH AND EAST PROPERTY LINES ARE HEREBY DEDICATED TO AND FOR THE USE OF THE PUBLIC.

EASEMENTS FOR THE CONSTRUCTION AND MAINTENANCE OF PUBLIC UTILITIES ARE HEREBY GRANTED.

A DRAINAGE PLAN HAS BEEN APPROVED FOR THIS PLAT. ALL DRAINAGE EASEMENTS, RIGHTS-OF-WAY, OR RESERVES SHALL REMAIN AT ESTABLISHED GRADES AND UNOBSTRUCTED TO ALLOW FOR THE CONVEYANCE OF STORM WATER, UNLESS MODIFIED WITH THE APPROVAL OF THE CITY ENGINEER.

FEMA FLOOD PLAIN AND REGULATORY FLOODWAY BOUNDARIES ARE SUBJECT TO PERIODIC CHANGE, AND SUCH CHANGE MAY AFFECT THE INTENDED LAND USE WITHIN THE SUBDIVISION.

KNOW ALL MEN BY THESE PRESENTS THAT WE, THE UNDERSIGNED PROPERTY OWNERS OF THE LAND AS ABOVE SET FORTH IN THE SURVEYOR'S CERTIFICATE, HAVE CAUSED THE LAND TO BE SURVEYED AND PLATTED INTO A LOT, A BLOCK, AND RESERVES THE SAME TO BE KNOWN AS NEWMARKET V ADDITION, AN ADDITION TO WICHITA, SEDGWICK COUNTY, KANSAS.

OWNERS:  
 NEWMARKET V, LLC, A KANSAS LIMITED LIABILITY COMPANY

**JERRY JONES**, VICE PRESIDENT

STATE OF KANSAS }  
 COUNTY OF SEDGWICK } SS

THIS INSTRUMENT WAS ACKNOWLEDGED BEFORE ME ON THIS 16<sup>th</sup> DAY OF MAY, 2008, BY JERRY JONES, VICE PRESIDENT OF NEWMARKET V, LLC,

A KANSAS LIMITED LIABILITY COMPANY

**Sarah E. Hat**, NOTARY PUBLIC

MY APPOINTMENT EXPIRES: December 16, 2008

WE, TRUST BANK, N.A., HOLDER OF A MORTGAGE ON THE ABOVE DESCRIBED PROPERTY, DO HEREBY CONSENT TO THE PLATTING OF NEWMARKET V ADDITION, AN ADDITION TO WICHITA, SEDGWICK COUNTY, KANSAS.

**Roger G. Eastwood**  
 ROGER G. EASTWOOD, SENIOR VICE PRESIDENT

STATE OF KANSAS }  
 COUNTY OF SEDGWICK } SS

THIS INSTRUMENT WAS ACKNOWLEDGED BEFORE ME ON THIS 19<sup>th</sup> DAY OF May, 2008, BY ROGER G. EASTWOOD, SENIOR VICE PRESIDENT OF

INTRUST BANK  
**Melinda A. Spies**, NOTARY PUBLIC  
 MELINDA A. SPIES

MY APPOINTMENT EXPIRES: 2/19/11

THIS PLAT IS APPROVED AND ALL DEDICATIONS SHOWN HEREON, IF ANY ARE ACCEPTED BY THE CITY COUNCIL OF THE CITY OF WICHITA, KANSAS, THIS

**Carl Brewer**, MAYOR  
**John Schueler**, CITY CLERK

STATE OF KANSAS }  
 COUNTY OF SEDGWICK } SS

THIS PLAT OF NEWMARKET V ADDITION, AN ADDITION TO WICHITA, SEDGWICK COUNTY, KANSAS, HAS BEEN SUBMITTED TO AND APPROVED BY THE WICHITA-SEDGWICK COUNTY METROPOLITAN AREA PLANNING COMMISSION, WICHITA, KANSAS.

DATED THIS 21<sup>st</sup> DAY OF June, 2008

WICHITA-SEDGWICK COUNTY METROPOLITAN AREA PLANNING COMMISSION

**John Schueler**, CHAIRMAN  
**John L. Schueler**, SECRETARY

REVIEWED IN ACCORDANCE WITH K.S.A. 58-2005 ON THIS 27<sup>th</sup> DAY

OF May, 2008.

**TRICIA L. ROBELLO**  
 LICENSED SURVEYOR  
 KANSAS  
 No. 1246

TRICIA L. ROBELLO, LS 1246  
 DEPUTY COUNTY SURVEYOR  
 SEDGWICK COUNTY KANSAS

ENTERED IN TRANSFER RECORD THIS 11<sup>th</sup> DAY OF August, 2008

**Don Brace**, COUNTY CLERK

THIS IS TO CERTIFY THAT THIS INSTRUMENT WAS FILED FOR RECORD IN THE

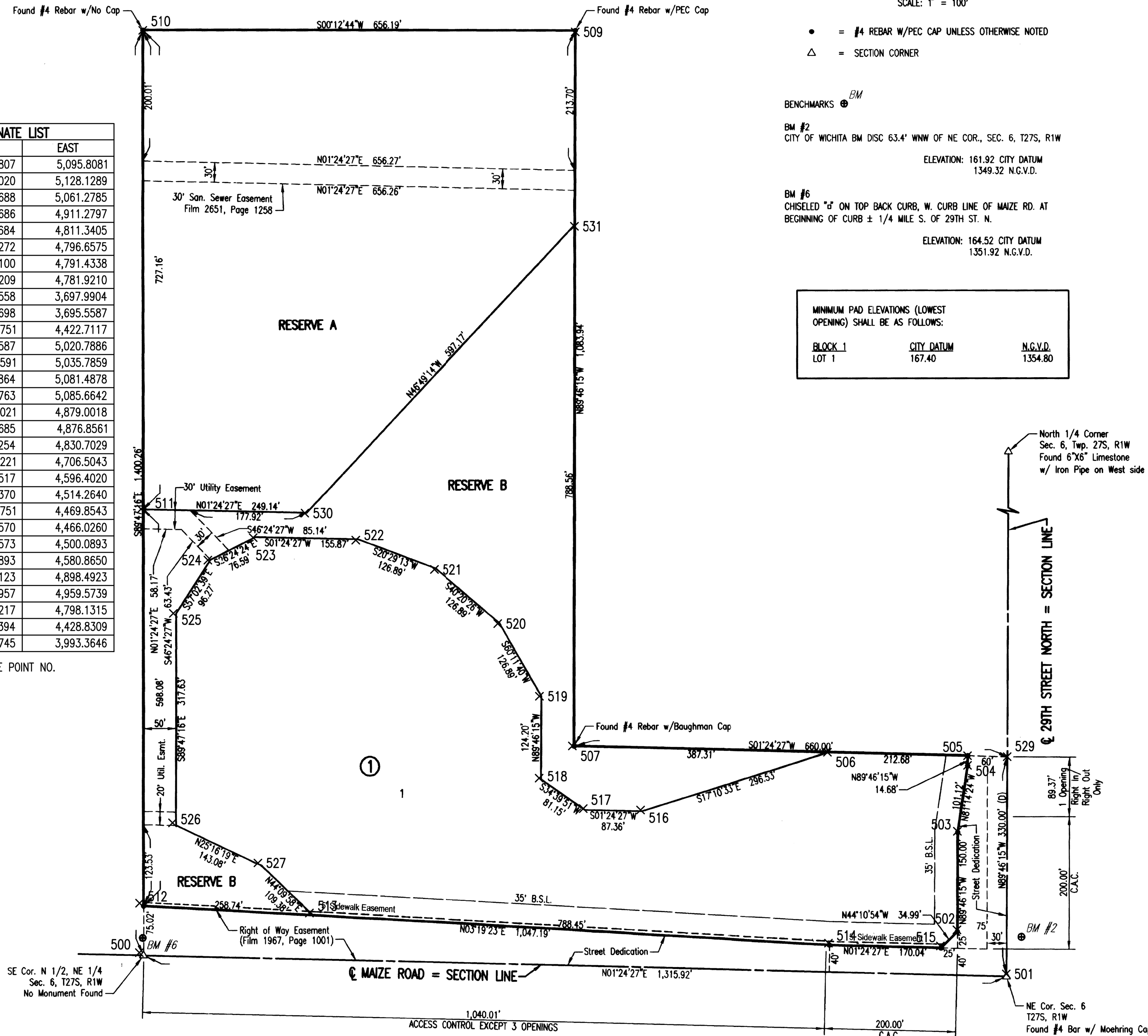
REGISTER OF DEEDS OFFICE AT 3:50:36 P.M. ON THE 11<sup>th</sup> DAY

OF August, 2008.

**Bill Meek**, REGISTER OF DEEDS

| POINT | NORTH       | EAST       |
|-------|-------------|------------|
| 500   | 8,950.4807  | 5,095.8081 |
| 501   | 10,266.0020 | 5,128.1289 |
| 502   | 10,191.2688 | 5,061.2785 |
| 503   | 10,191.8686 | 4,911.2797 |
| 504   | 10,207.2684 | 4,811.3405 |
| 505   | 10,207.3272 | 4,796.6575 |
| 506   | 9,994.7100  | 4,791.4338 |
| 507   | 9,607.5209  | 4,781.9210 |
| 509   | 9,611.8558  | 3,697.9904 |
| 510   | 8,955.6698  | 3,695.5587 |
| 511   | 8,952.9751  | 4,422.7117 |
| 512   | 8,950.7587  | 5,020.7886 |
| 513   | 9,209.0591  | 5,035.7859 |
| 514   | 9,996.1864  | 5,081.4878 |
| 515   | 10,166.1763 | 5,085.6642 |
| 516   | 9,711.4021  | 4,879.0018 |
| 517   | 9,624.0685  | 4,876.8561 |
| 518   | 9,557.3254  | 4,830.7029 |
| 519   | 9,557.8221  | 4,706.5043 |
| 520   | 9,494.7517  | 4,596.4020 |
| 521   | 9,398.0370  | 4,514.2640 |
| 522   | 9,279.1751  | 4,469.8543 |
| 523   | 9,123.3570  | 4,466.0260 |
| 524   | 9,054.7573  | 4,500.0893 |
| 525   | 9,002.3893  | 4,580.8650 |
| 526   | 9,001.2123  | 4,898.4923 |
| 527   | 9,130.5957  | 4,959.5739 |
| 529   | 10,267.3217 | 4,798.1315 |
| 530   | 9,202.0394  | 4,428.8309 |
| 531   | 9,610.6745  | 3,993.3646 |

× 500 = COORDINATE POINT NO.



- = #4 REBAR w/PEC CAP UNLESS OTHERWISE NOTED
- △ = SECTION CORNER

BENCHMARKS **BM**  
**BM #2**  
 CITY OF WICHITA BM DISC 63.4' WNW OF NE COR., SEC. 6, T27S, R1W  
 ELEVATION: 161.92 CITY DATUM  
 1349.32 N.G.V.D.

**BM #6**  
 CHISELED "d" ON TOP BACK CURB, W. CURB LINE OF MAIZE RD. AT BEGINNING OF CURB ± 1/4 MILE S. OF 29TH ST. N.  
 ELEVATION: 164.52 CITY DATUM  
 1351.92 N.G.V.D.

| BLOCK | CITY DATUM | N.G.V.D. |
|-------|------------|----------|
| LOT 1 | 167.40     | 1354.80  |

Sowed 08-24-2016 9:56:08 AM by KURTIS DEKAT  
 Plot Scale 1:1 09-07-2016 2:58:48 PM by KURTIS DEKAT  
 U:\Wichita-Civil\2016\160626\000\Wm\Drawings\160626-000-PLAT

|   |          |         |                |
|---|----------|---------|----------------|
| No.   | Revision | By      | Date           |
| LATERAL 7, MAIN 6<br>OF THE NORTHWEST INTERCEPTOR SEWER<br><b>PLAT BUBBLE MAP (NEWMARKET V)</b><br>GARY JANZEN, P.E. - CITY ENGINEER<br>CITY OF WICHITA PROJECT NO. 468-85130 |          |         |                |
| PROFESSIONAL ENGINEERING CONSULTANTS, P.A.<br>303 SOUTH TOPEKA WICHITA, KS 67202<br>316-262-2691 www.pec1.com   |          |         |                |
| Designed by   | CSB, SAD | Job No. | 35-160626-0-42 |
| Drawn by  | RFT, GM  | Date    | APRIL 2016     |
|   |          | Sht.    | 3 of 13        |

© 29TH ST. N = SECTION LINE

NE Corner, Sec. 6, T27S, R1W

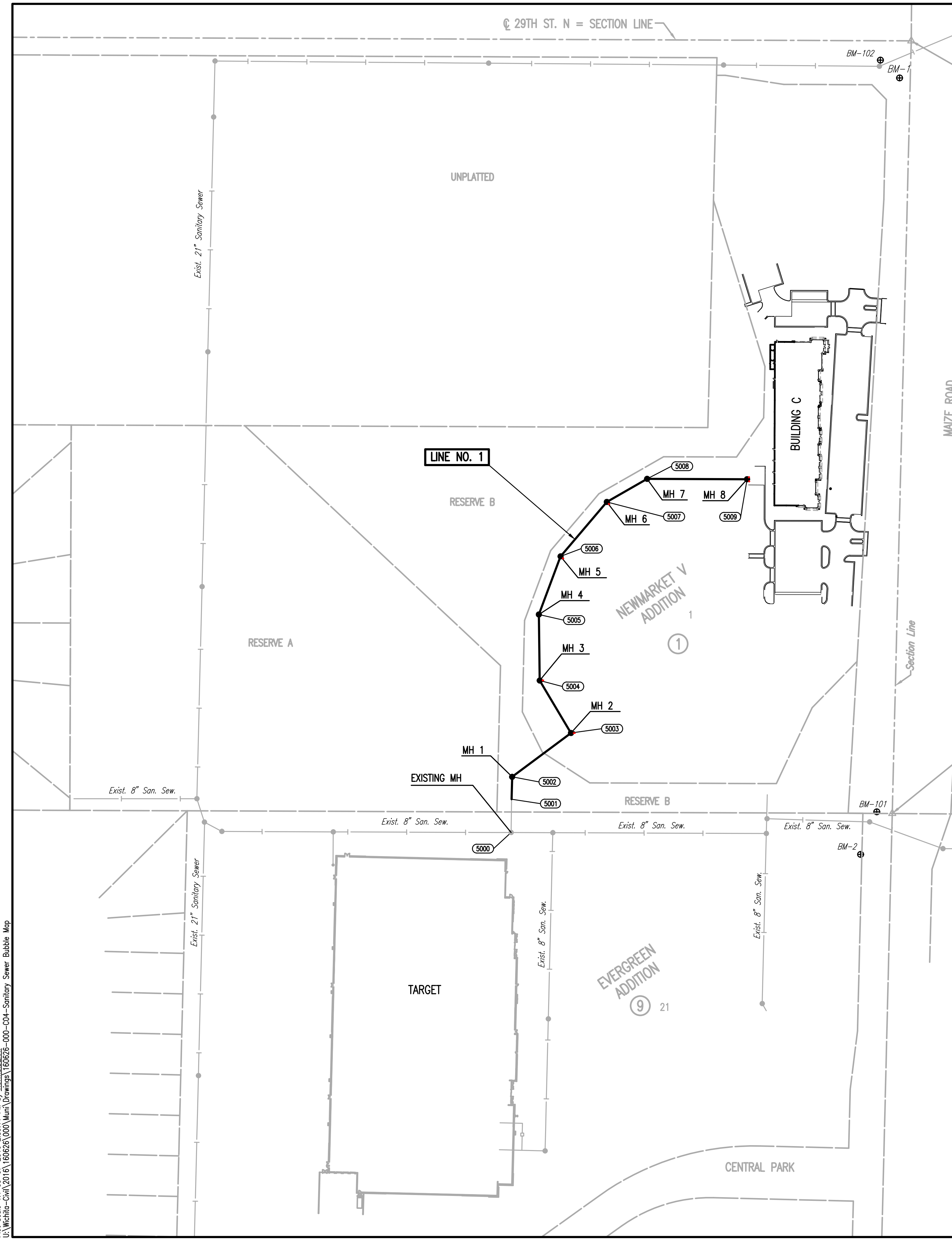
SCALE: 1" = 100'

| SANITARY SEWER LINE NO. 1 COORDINATE LIST |            |            |         |              |
|---|------------|------------|---------|--------------|
| POINT                                     | NORTHING   | EASTING    | STATION | DESCRIPTION  |
| 5000                                      | 8,917.8855 | 4,446.8479 | 0+00.0  | EXISTING MH  |
| 5001                                      | 8,974.6923 | 4,447.7740 | 0+56.5  | EXISTING CAP |
| 5002                                      | 9,012.7278 | 4,448.6911 | 0+94.5  | MH 1         |
| 5003                                      | 9,087.3821 | 4,548.8044 | 2+19.4  | MH 2         |
| 5004                                      | 9,176.7582 | 4,495.6123 | 3+23.4  | MH 3         |
| 5005                                      | 9,289.1709 | 4,494.1387 | 4+35.8  | MH 4         |
| 5006                                      | 9,388.1438 | 4,531.1174 | 5+41.5  | MH 5         |
| 5007                                      | 9,480.8448 | 4,609.8468 | 6+63.1  | MH 6         |
| 5008                                      | 9,520.1394 | 4,678.4433 | 7+42.2  | MH 7         |
| 5009                                      | 9,519.5085 | 4,848.6736 | 9+12.4  | MH 8         |

5000 = COORDINATE POINT NO.  
SEE SHEET NO. 3 FOR PLAT COORDINATES

**BENCHMARK LIST**

- BM #1 - SET BY RUGGLES & BOHLM. CHISELED SQUARE ON SOUTHEAST CORNER OF RCRC HEADWALL AT THE SOUTHWEST CORNER OF 29TH STREET N. AND MAIZE ROAD, 9' SW OF A TRAFFIC SIGNAL POLE AND 13' WSW OF A TRAFFIC SIGNAL MAN HOLE.  
ELEV. = 1353.30 (NAVD 88)
- BM #2 - SET BY RUGGLES & BOHLM. CHISELED SQUARE ON THE TOP OF CURB ON THE WEST CURB RETURN ON THE SOUTH SIDE OF THE NORTH DRIVE ENTRANCE TO 2727 N. MAIZE ROAD, 31' NW OF A LIGHT POLE AND 58' SSW OF A MAN HOLE.  
ELEV. = 1352.44 (NAVD 88)
- BM #101 - EXISTING PLAT BM #6, CHISELED SQUARE ON THE TOP OF CURB, WEST CURB OF MAIZE ROAD, AT THE NORTH END OF CURB JUST NORTH OF THE NORTH DRIVE ENTRANCE TO TARGET.  
ELEV. = 1352.57 (NAVD 88)
- BM#102 - SET BY ALLIED LABORATORIES. CHISELED SQUARE ON A CURB INLET AT THE SOUTHWEST CORNER OF MAIZE ROAD AND 29TH STREET NORTH.  
ELEV. = 1351.97 (NAVD 88)



Sowed: 08-24-2016 9:14:29 AM by KURITS.DEKAT  
 Plot Scale: 1" = 100' - 07-2016 2:55:11 PM by KURITS.DEKAT  
 U:\Wichita-Civil\2016\160626\000\Main\Drawings\160626-000-004-Sanitary Sewer Bubble Map

|   |          |         |                |
|---|----------|---------|----------------|
| No.   | Revision | By      | Date           |
| LATERAL 7, MAIN 6<br>OF THE NORTHWEST INTERCEPTOR SEWER<br><b>SANITARY SEWER BUBBLE MAP</b><br>GARY JANZEN, P.E. - CITY ENGINEER<br>CITY OF WICHITA PROJECT NO. 468-85130 |          |         |                |
| PROFESSIONAL ENGINEERING CONSULTANTS, P.A.<br>303 SOUTH TOPEKA WICHITA, KS 67202<br>316-262-2691 www.pec1.com   |          |         |                |
| Designed by   | CSB, SAD | Job No. | 35-160626-0-42 |
| Drawn by  | RFT, GM  | Date    | APRIL 2016     |

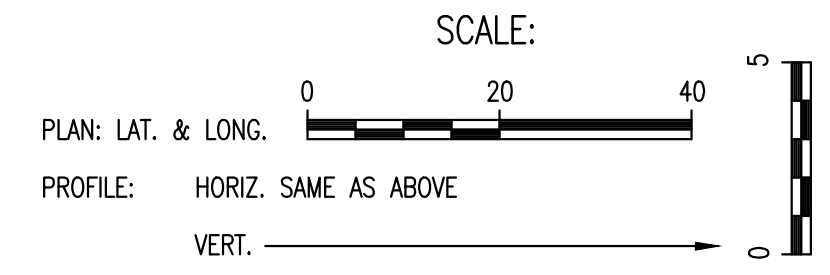
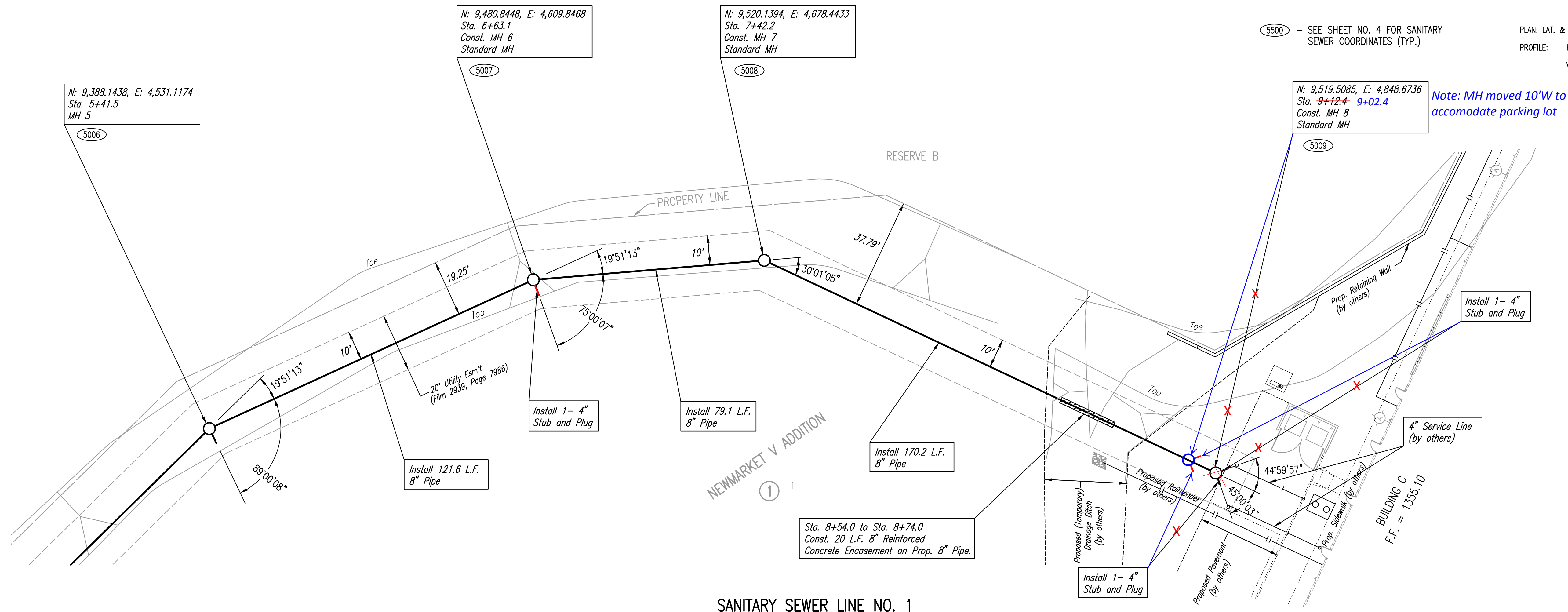
Sht. 4 of 13



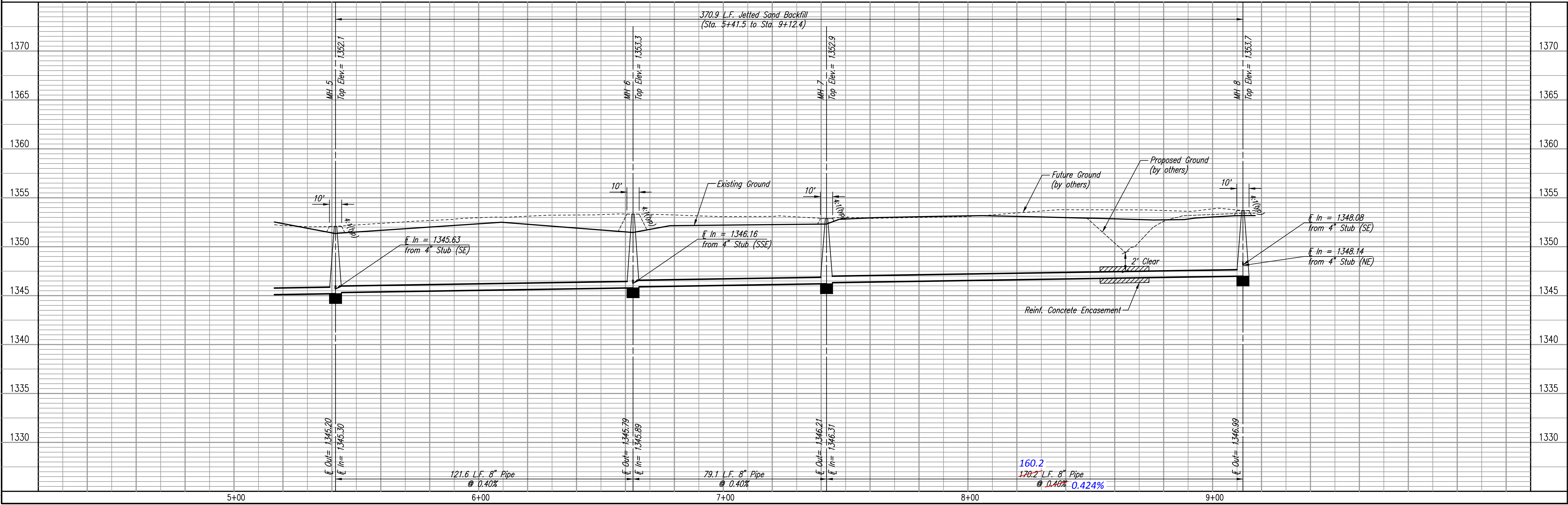
|      |         |      |
|------|---------|------|
| PLAN | CHECKED | DATE |
|      | CHECKED |      |
| BY   |         |      |

|         |         |      |
|---------|---------|------|
| PROFILE | CHECKED | DATE |
|         | CHECKED |      |
| BY      |         |      |

Saved: 09-07-2016 2:54:41 PM by: CSI  
 Plot Scale: 1" = 10'-0" (Horizontal) / 1" = 4'-0" (Vertical)  
 U:\Projects\Civil\2016\160626-000\Drawings\160626-000-006-SS-PRO2



**SANITARY SEWER LINE NO. 1**



**SANITARY SEWER LINE NO. 1**  
 LATERAL 7, MAIN 6  
 OF THE NORTHWEST INTERCEPTOR SEWER  
 GARY JANZEN, P.E. - CITY ENGINEER  
 CITY OF WICHITA PROJECT NO. 468-85130

**PEC**  
 PROFESSIONAL ENGINEERING CONSULTANTS, P.A.  
 303 SOUTH TOPEKA WICHITA, KS 67202  
 316-262-2691 www.pec1.com

Job No. 35-160626-000-0042  
 Date APRIL 2016

Designed By CSB, SJD  
 Drawn By RFL, GM

Sheet 6 of 13