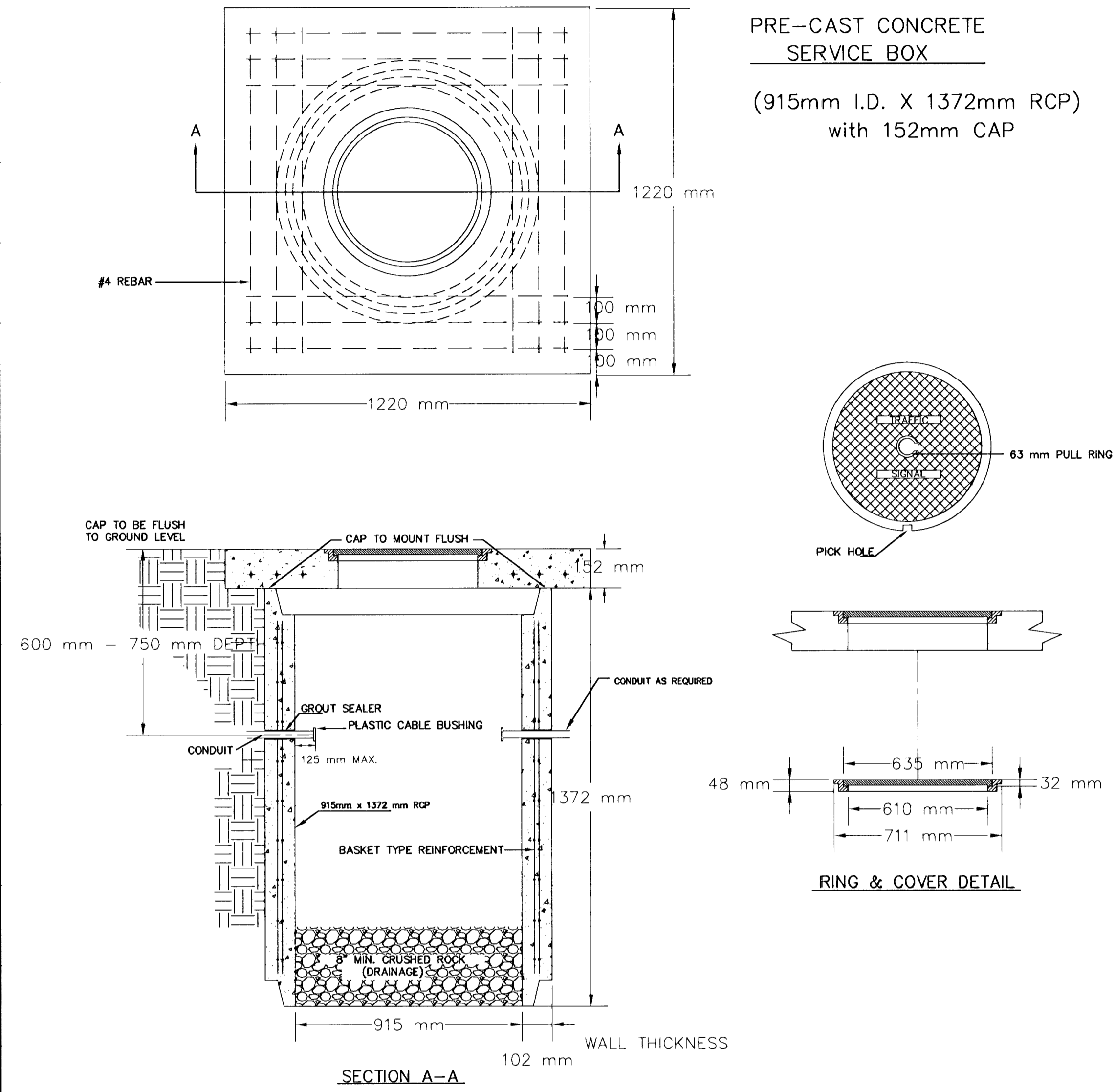
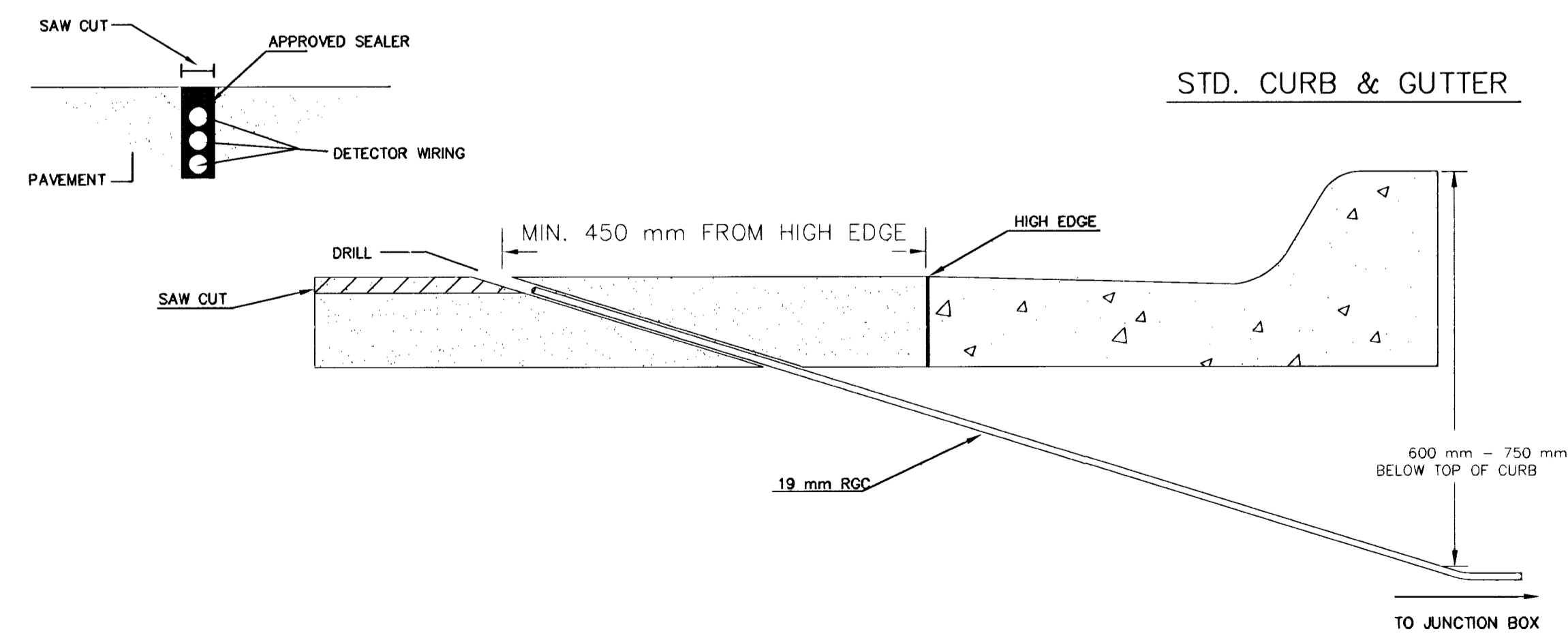


SERVICE BOX CONSTRUCTION/INSTALLATION DETAILS

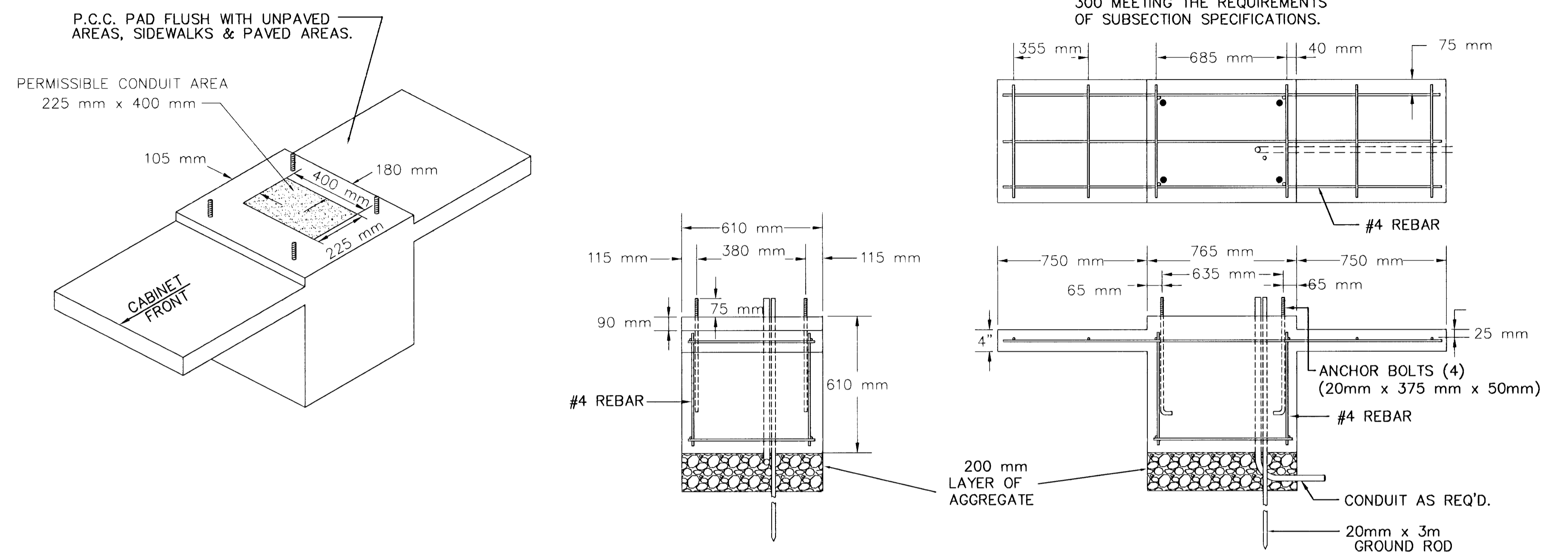


CONDUIT/DETECTOR WIRE INSTALLATION DETAILS

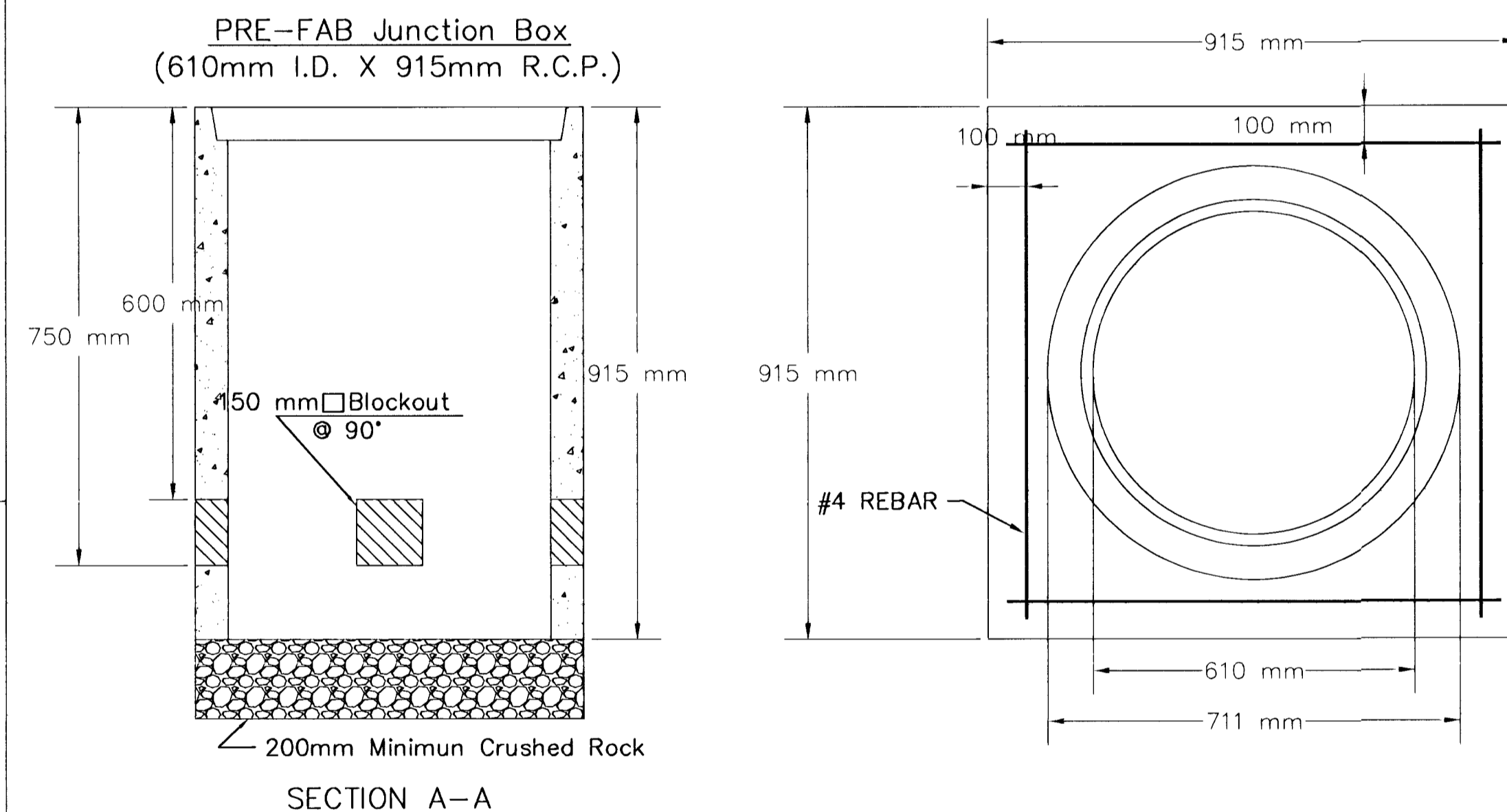


170 CONTROLLER PAD DETAILS

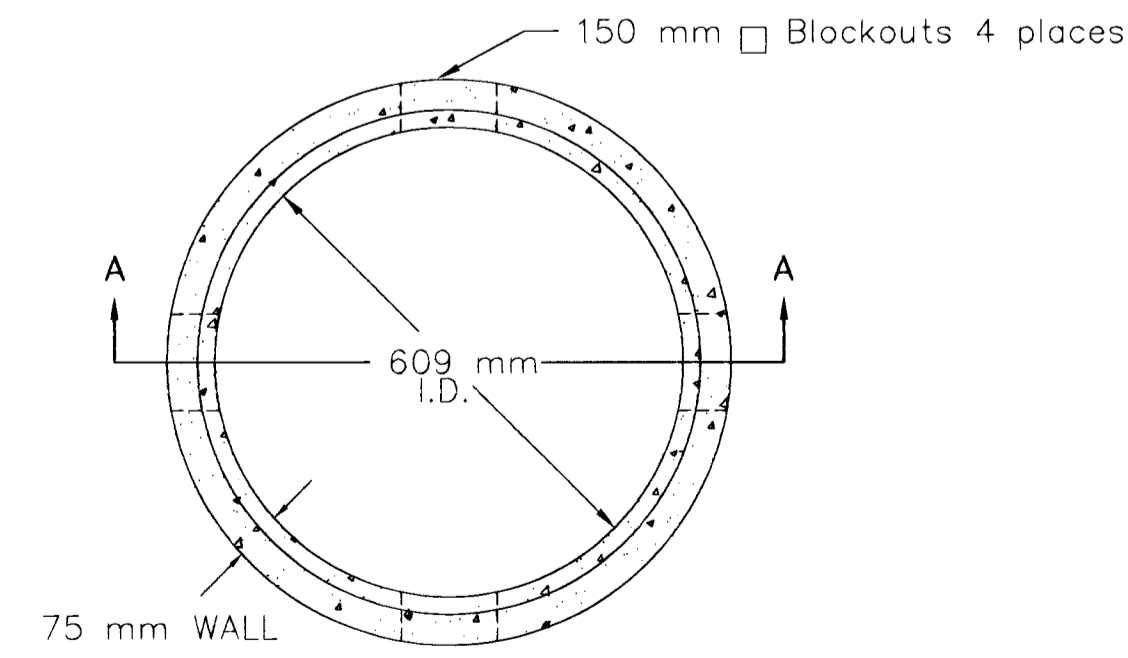
FHWA REC. NO.	STATE	PROJECT NO.	YEAR	SHEET NUMBER	TOTAL SHEETS
7	KANSAS	97 N-0194-01	2001	24	43



JUNCTION BOX DETAILS



JUNCTION BOX CAP
915 mm x 915 mm x 152 mm
TOP OF CAP TO BE FLUSH WITH GROUND LEVEL.



SEE SERVICE BOX INSTALLATION FOR RING & COVER DETAILS.

NOTES:

- SERVICE & JUNCTION BOX:**
- CONDUIT CONNECTION TO BE FLUSH TO WITHIN 125 mm OF INSIDE FACE OF SIDE WALL, CONDUIT TO DRAIN INTO SERVICE BOX.
 - CONDUIT CONNECTIONS TO SERVICE BOX SHALL BE TERMINATED WITH PLASTIC CABLE BUSHING.
 - CONDUIT SHALL BE SEALED WITH APPROVED SEALER AT INSIDE WALL FACE.
 - ALL SERVICE & JUNCTION BOXES TO HAVE 200 mm OF CRUSHED ROCK.
- TRENCHING:**
- DEPTH TO BE 750 mm MINIMUM WITH ROCK & STUBBLE FREE BACKFILL TO SERVE AS BEDDING MATERIAL. MAINTAIN MINIMUM CONDUIT DEPTH IN TRENCH.
 - BACKFILL TO BE COMPACTED IN 150 mm LOOSE LIFTS BY HAND OR MECHANICAL TAMPING TO A 95% STANDARD DENSITY.
- CONDUIT:**
- SLOPE CONDUIT TO DRAIN AS DIRECTED BY THE ENGINEER.
 - 75 mm RIGID STEEL CONDUIT BTWN. SERVICE BOXES.
32 mm " " " BTWN. SERVICE & JUNCTION BOXES.
19 mm " " " BTWN. JUNCTION BOXES.
19 mm " " " BTWN. JUNCTION BOX & DETECTOR LOOP SAW CUT

REV. DATE	COMMENTS	INT

PROJECT DESCRIPTION

SERVICE/JUNCTION BOX, CONTROLLER PAD CONSTRUCTION/INSTALLATION DETAILS

PROJECT NUMBER

DRAWN BY: T.M. SCALE: NO SCALE REVISED BY:

DATE: APR. 98 DATE:

CITY OF WICHITA
DEPARTMENT OF PUBLIC WORKS

DIVISION OF TRAFFIC ENGINEERING
P.E. TRAFFIC ENGINEER

SHEET OF