

PLOTTED: Thursday, September 22, 2016 @ 11:46AM

J:\PROJECTS\2016\19104078_COW_21ST & OLIVER_XXXXXX CAD\SHS\505 QW\PAV\1517REP01.DWG



STREET IMPROVEMENTS FOR 21ST & OLIVER INTERSECTION WICHITA, KANSAS

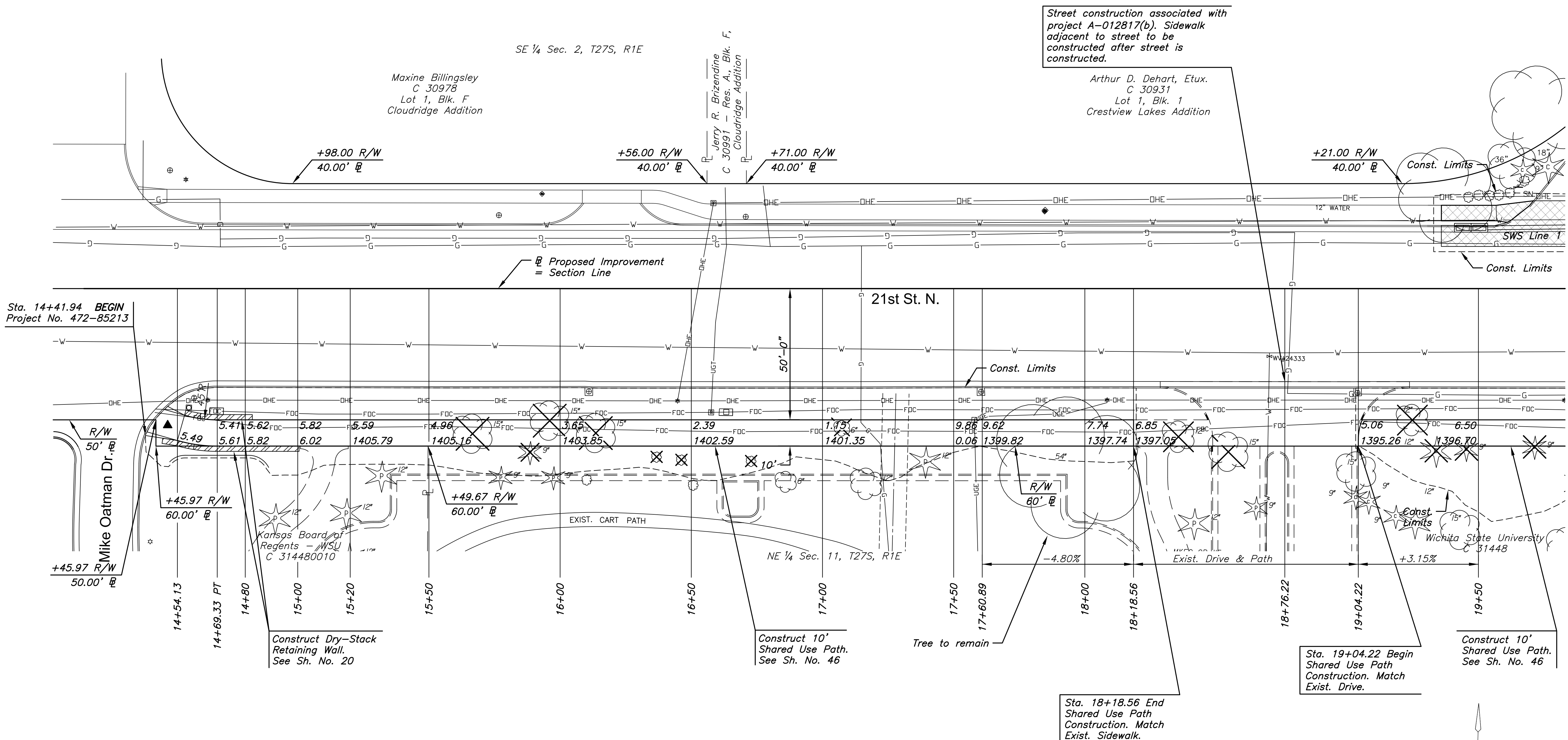
©2016
MKEC Engineering
All Rights Reserved
www.mkec.com
These drawings and their contents, including, but not limited to, all concepts, designs, & ideas are the exclusive property of MKEC Engineering (MKEC), and may not be used or reproduced in any way without the express consent of MKEC.

PAVING PLAN - 21ST ST.

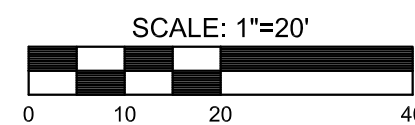
PROJECT NO.	472-85213	
DATE	SEPT. 2016	
SCALE	1"=20'	
DESIGNED	DRAWN	CHECKED
JRA	DMU	JRA

NO.	REVISION	DATE

SHEET NO.
10 OF 125



Note:
Grading on the WSU property will be necessary to construct the shared use sidewalk at the elevations shown. Construction associated with various private WSU projects may be in progress at the same time as this project or may have occurred prior to this project. As a result, grading requirements on WSU property may be different than indicated on the plans. The contractor shall coordinate grading activities on the WSU property with the contractors and engineers associated with these other projects prior to performing excavation adjacent to the shared use sidewalk.



LEGEND

- Pavement Removal
- Construct Wheelchair Ramp See Sh. No. 48
- Tree Removal

Street construction associated with project A-012817(b). Sidewalk adjacent to street to be constructed after street is constructed.

Arthur D. Dehart, Etux.
C 30931
Lot 1, Blk. 1
Crestview Lakes Addition

Maxine Billingsley
C 30978
Lot 1, Blk. F
Cloudridge Addition

Jerry R. Brizendine
C 30991 - Res. A, Blk. F,
Cloudridge Addition

SE 1/4 Sec. 2, T27S, R1E

21st St. N.

Sta. 14+41.94 BEGIN
Project No. 472-85213

Mike Oatman Dr.
R/W 50' @
+45.97 R/W
50.00' @

+45.97 R/W
60.00' @
14+54.13
14+69.33 PT
14+80

Kansas Board of Regents - WSU
C 314480010
Construct Dry-Stack Retaining Wall.
See Sh. No. 20

+49.67 R/W
60.00' @
15+00
15+20
15+50

Construct 10'
Shared Use Path.
See Sh. No. 46

Tree to remain

Sta. 18+18.56 End
Shared Use Path
Construction. Match
Exist. Sidewalk.

Sta. 19+04.22 Begin
Shared Use Path
Construction. Match
Exist. Drive.

Construct 10'
Shared Use Path.
See Sh. No. 46