

STREET IMPROVEMENTS FOR  
**21ST & OLIVER INTERSECTION**  
WICHITA, KANSAS

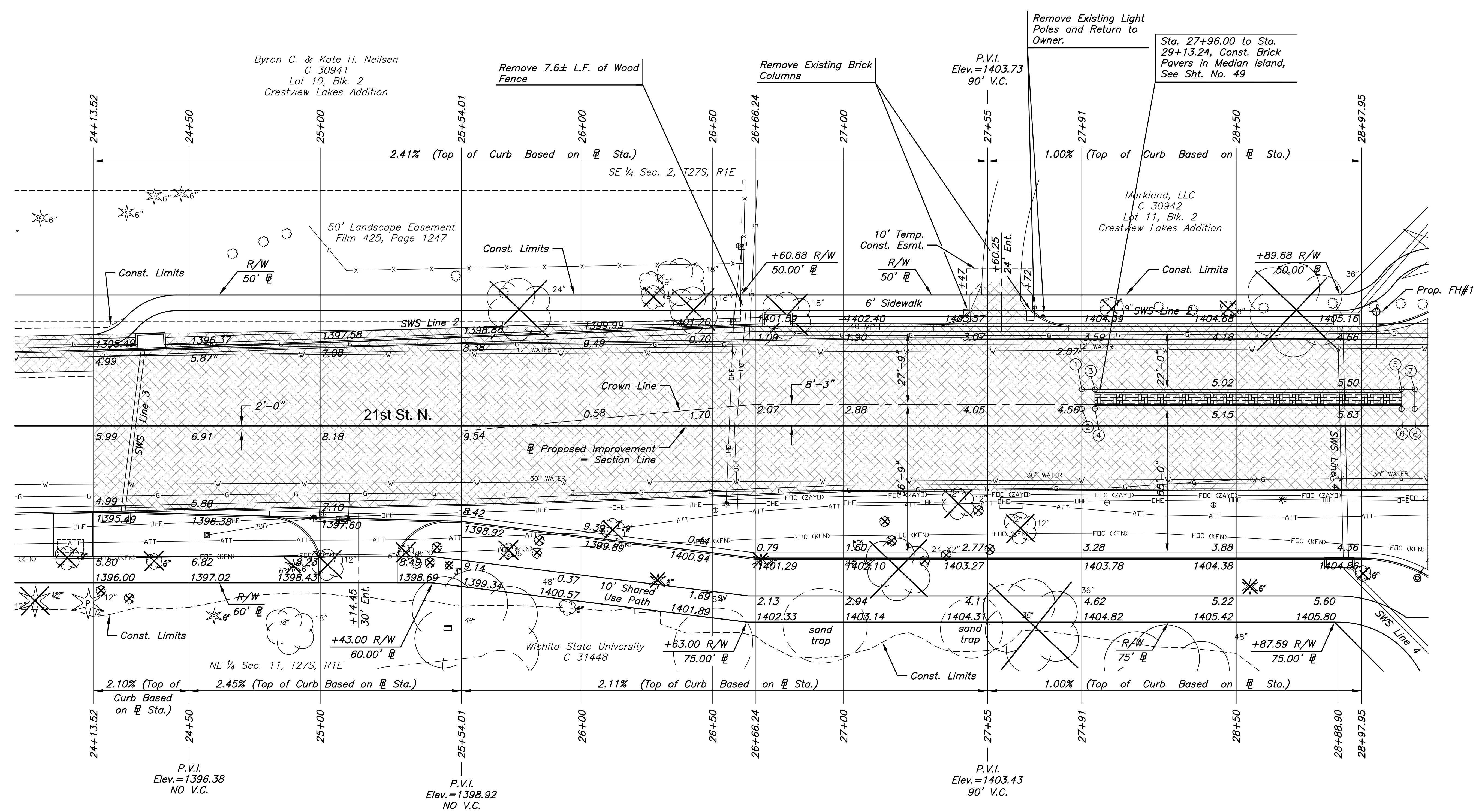
©2016  
MKEC Engineering  
All Rights Reserved  
www.mkec.com  
These drawings and their contents, including, but not limited to, all concepts, designs, & ideas are the exclusive property of MKEC Engineering (MKEC), and may not be used or reproduced in any way without the express consent of MKEC.

**PAVING PLAN - 21ST ST.**

PROJECT NO.	472-85213	
DATE	SEPT. 2016	
SCALE	1"=20'	
DESIGNED	DRAWN	CHECKED
JRA	DMU	JRA

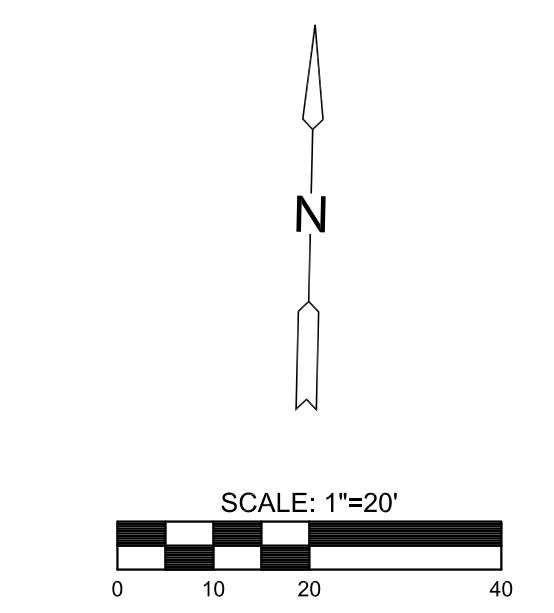
NO.	REVISION	DATE

SHEET NO.



21st Street Medians				
Point No.	Station	Offset	Elevation	
			Flowline	Top Curb
①	27+91.00	14.00' Lt.	1404.39	1404.39
②	27+91.00	6.50' Lt.	1404.53	1404.53
③	27+96.00	14.00' Lt.	1404.48	1405.15
④	27+96.00	6.50' Lt.	1404.61	1405.28
⑤	29+13.24	14.00' Lt.	1405.62	1406.29
⑥	29+13.24	6.50' Lt.	1405.79	1406.46
⑦	29+18.24	14.00' Lt.	1405.67	1405.67
⑧	29+18.24	6.50' Lt.	1405.86	1405.86

*Note:*  
Grading on the WSU property will be necessary to construct the shared use sidewalk at the elevations shown. Construction associated with various private WSU projects may be in progress at the same time as this project or may have occurred prior to this project. As a result, grading requirements on WSU property may be different than indicated on the plans. The contractor shall coordinate grading activities on the WSU property with the contractors and engineers associated with these other projects prior to performing excavation adjacent to the shared use sidewalk.



- LEGEND**
- Pavement Removal
  - Construct Wheelchair Ramp See Sh. No. 48
  - Tree Removal

*NOTE:*  
Top of Curb elevations shown are for Type 1 curb. Construct curb and gutter as noted.

PLOTTED: Thursday, September 22, 2016 @ 12:07PM  
 J:\PROJECTS\2016\190104078\_COW\_21ST & OLIVER\_XXXXXX CAD\SHS\505 CIVIL\PAV15178.PLDWG