

STREET IMPROVEMENTS FOR
21ST & OLIVER INTERSECTION
 WICHITA, KANSAS

©2016 MKEC Engineering All Rights Reserved
 www.mkec.com
 These drawings and their contents, including, but not limited to, all concepts, designs, & ideas are the exclusive property of MKEC Engineering (MKEC), and may not be used or reproduced in any way without the express consent of MKEC.

PAVING PLAN -
 21ST ST.

PROJECT NO. 472-85213

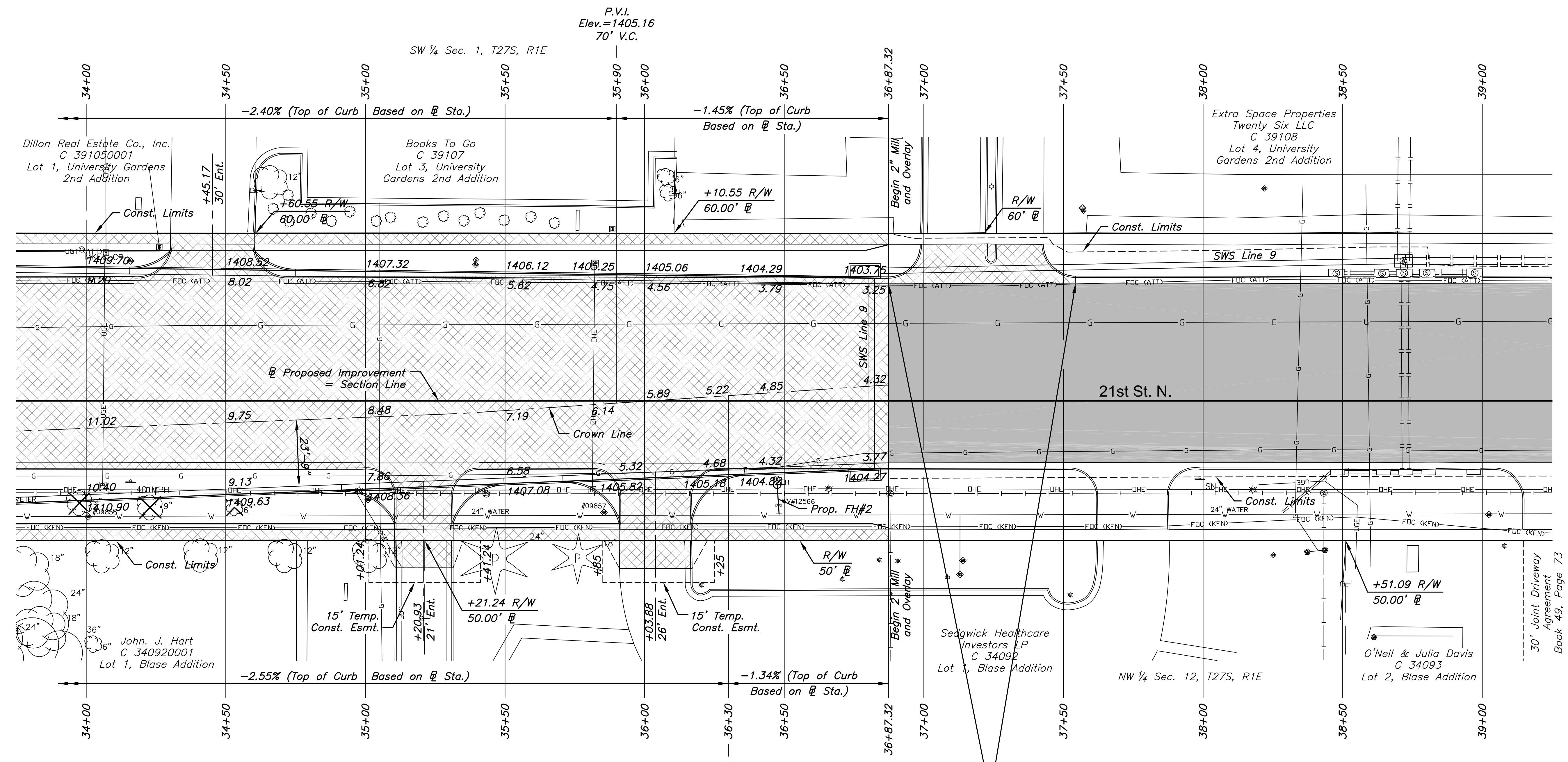
DATE SEPT. 2016

SCALE 1"=20'

DESIGNED DRAWN CHECKED
 JRA DMU JRA

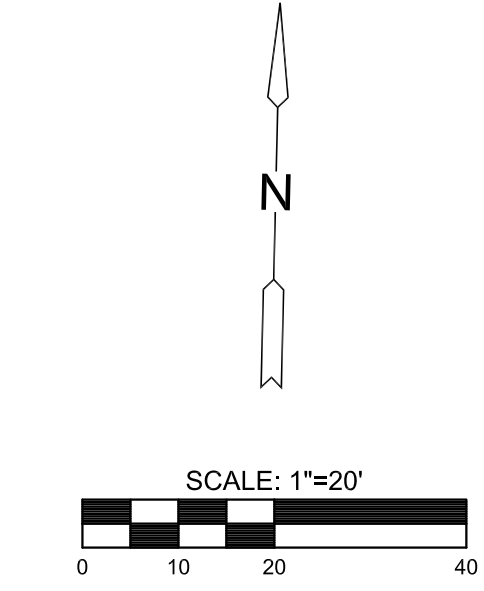
NO.	REVISION	DATE

SHEET NO.



21st Street Utility Adjustments				
Station	Offset	Exist. Elev.	Prop. Elev.	Description
34+00.71	41.54' Rt.	1411.47	1411.38	Valve Box Adjusted (Service Outlet)
34+15.86	50.18' Lt.	1409.47	1409.2	Water Meter Adjusted
35+00.98	35.36' Rt.	1408.82	-	Water Meter Relocated
35+39.42	48.92' Lt.	1406.84	1406.54	Water Meter Adjusted
35+43.31	33.24' Rt.	1407.38	1407.21	Manhole Adjusted w/New Ring & Cover
35+85.49	40.02' Rt.	1406.81	1406.91	Valve Box Adjusted (Service Outlet)
36+47.95	37.35' Rt.	1405.75	1405.71	Valve Box Adjusted

*Station and offset for meter relocations are at the existing meter location. Proposed location to be field verified.



- LEGEND**
- Pavement Removal
 - 2" Mill and Overlay
 - Construct Wheelchair Ramp See Sh. No. 48
 - Tree Removal

NOTE:
 Top of Curb elevations shown are for Type 1 curb. Construct curb and gutter as noted.

Sta. 36+87.33 to Sta. 37+54.39
 Construct 27' l.f. of driveway removed and replaced. Do not reconstruct median. See Sht. No. 57

PLOTTED: Thursday, September 22, 2016 @ 12:20PM
 J:\PROJECTS\2016\19104078_COW_21ST & OLIVER_XXXXXX CAD\SHOTS\05 CIVIL\PAV15178.PRDWG