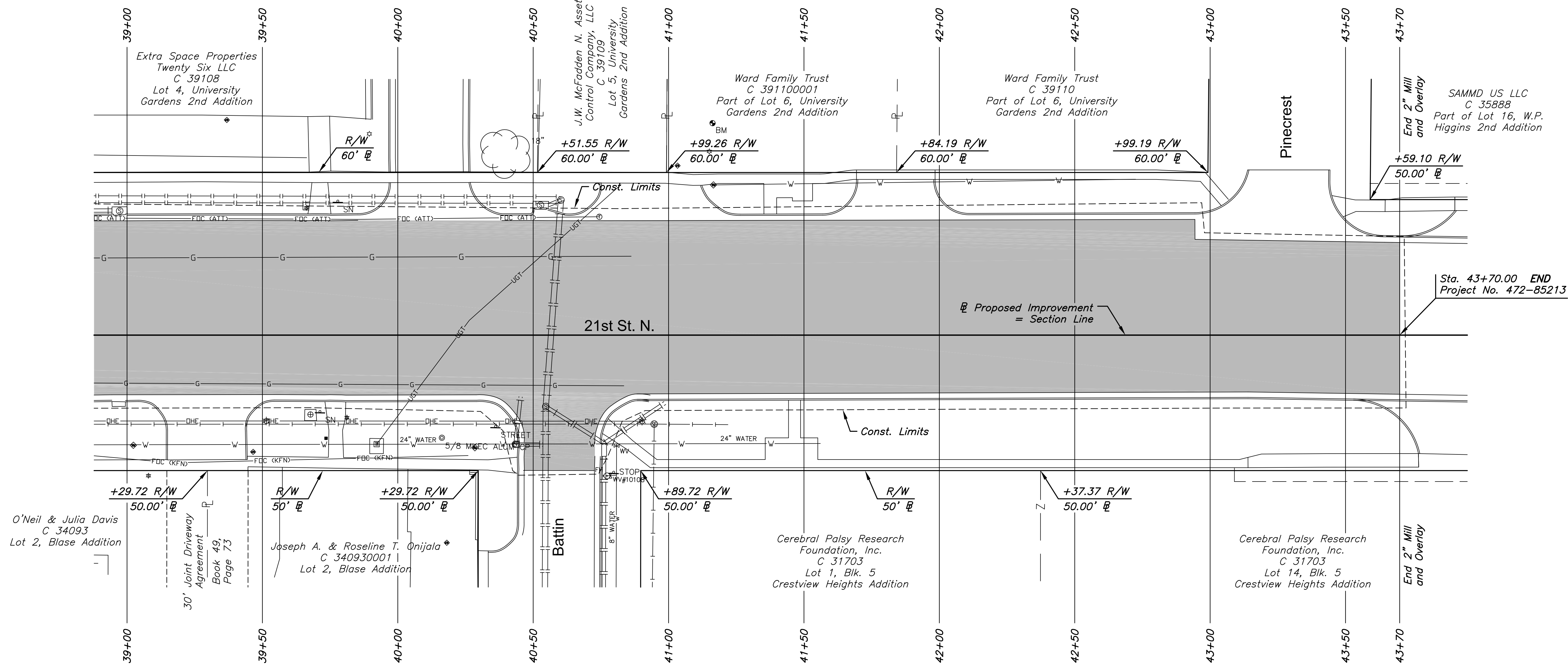


PLOTTED: Thursday, September 22, 2016 @ 12:26PM

J:\PROJECTS\2016\19104078_COW_21ST & OLIVER_XXXXXX CAD\SHOTS\05 CIVIL\PAV15178REV.DWG

STREET IMPROVEMENTS FOR
21ST & OLIVER INTERSECTION
 WICHITA, KANSAS



Sta. 43+70.00 END
 Project No. 472-85213

O'Neil & Julia Davis
 C 34093
 Lot 2, Blase Addition

30' Joint Driveway
 Agreement
 Book 49,
 Page 73

Joseph A. & Roseline T. Onijala
 C 340930001
 Lot 2, Blase Addition

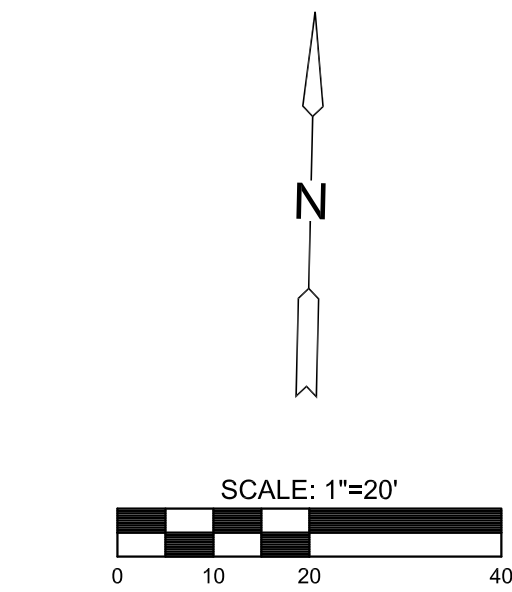
Battin

Cerebral Palsy Research
 Foundation, Inc.
 C 31703
 Lot 1, Blk. 5
 Crestview Heights Addition

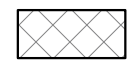



Cerebral Palsy Research
 Foundation, Inc.
 C 31703
 Lot 14, Blk. 5
 Crestview Heights Addition

21st Street Utility Adjustments				
Station	Offset	Exist. Elev.	Prop. Elev.	Description
40+54.65	26.36' Rt.	1403.34	N/A	Manhole frame & cover replaced

*Station and offset for meter relocations are at the existing meter location. Proposed location to be field verified.



NOTE:
 Top of Curb elevations shown
 are for Type 1 curb. Construct
 curb and gutter as noted.

- LEGEND**
-  Pavement Removal
 -  2" Mill and Overlay
 -  Construct Wheelchair Ramp
See Sh. No. 48
 -  Tree Removal

©2016
 MKEC Engineering
 All Rights Reserved
 www.mkec.com
 These drawings and their contents,
 including, but not limited to, all concepts,
 designs, & ideas are the exclusive
 property of MKEC Engineering (MKEC),
 and may not be used or reproduced in any
 way without the express consent of MKEC.

**PAVING PLAN -
 21ST ST.**

PROJECT NO.	472-85213	
DATE	SEPT. 2016	
SCALE	1"=20'	
DESIGNED	DRAWN	CHECKED
JRA	DMU	JRA

NO.	REVISION	DATE

SHEET NO.