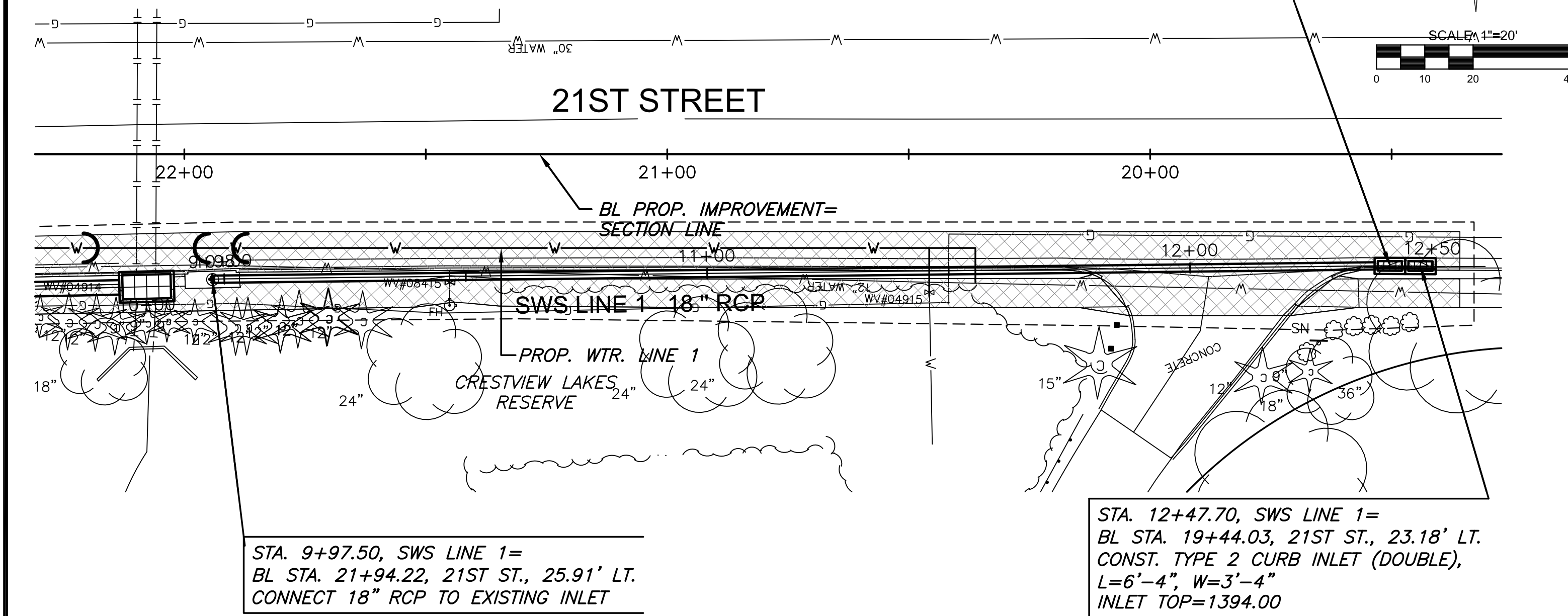


PLOTTED: Thursday, September 22, 2016 @ 01:12PM



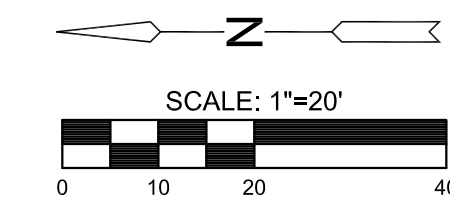
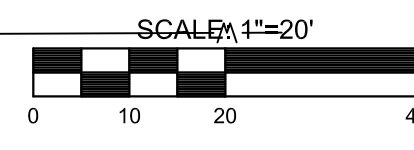
STA. 12+41.37, SWS LINE 1=
BL STA. 19+50.36, 21ST ST., 23.15' LT.
CONST. TYPE 2 CURB INLET (DOUBLE),
L=6'-4\", W=3'-4\"
INLET TOP=1393.93

STA. 10+00.00, SWS LINE 3
STA. 12+27.49, SWS LINE 2=
BL STA. 24+35.23, 21ST ST., 32.3' LT.

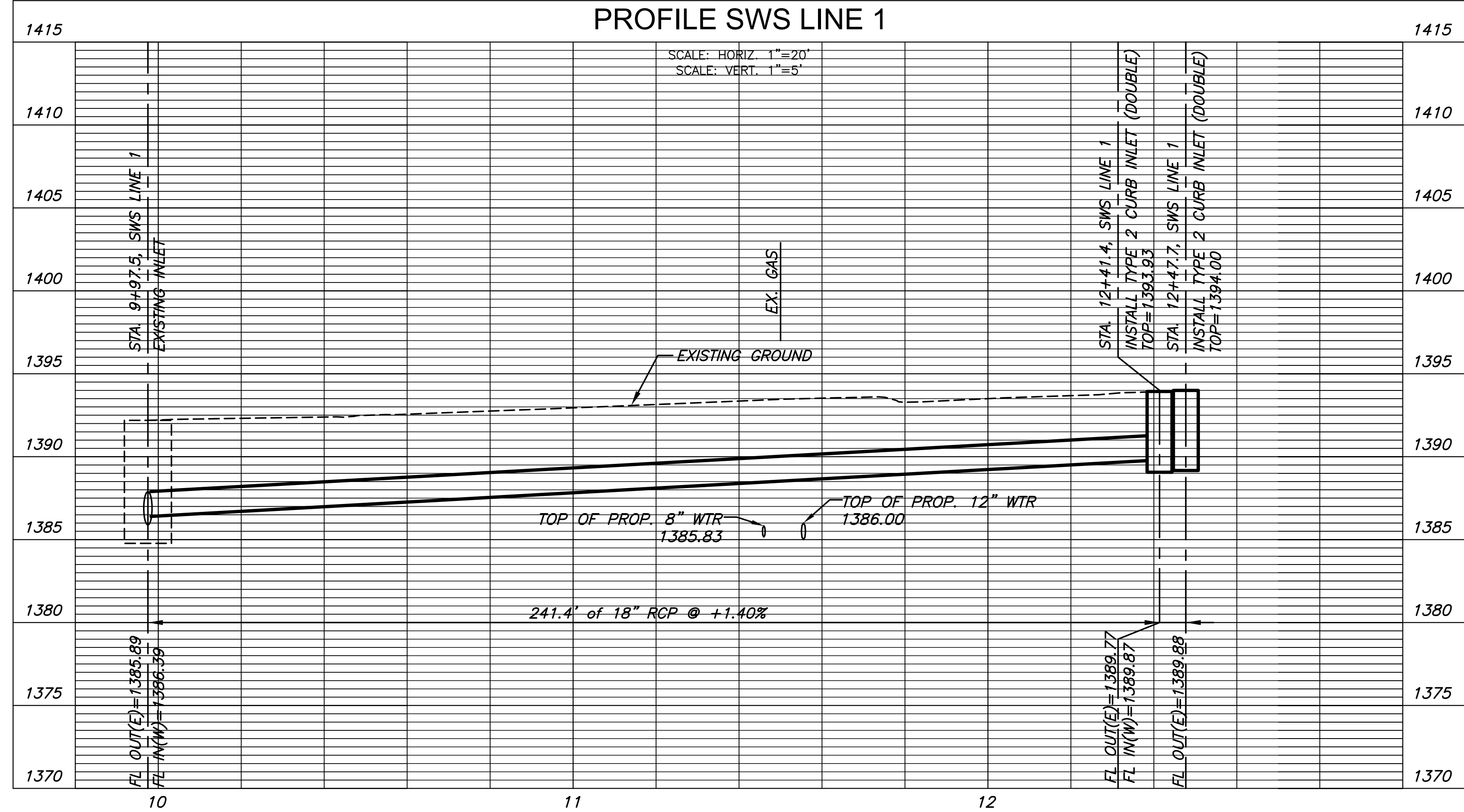
STA. 10+67.76, SWS LINE 3=
BL STA. 24+21.91, 21ST ST., 34.91' RT.
CONST. TYPE 1 CURB INLET,
L=10'-0\", W=3'-0\"
INLET TOP=1395.72

BYRON C. & KATE H. NEILSEN
2 CRESTVIEW LAKES
WICHITA, KS 67220-2914
GEO CODE: D 30941

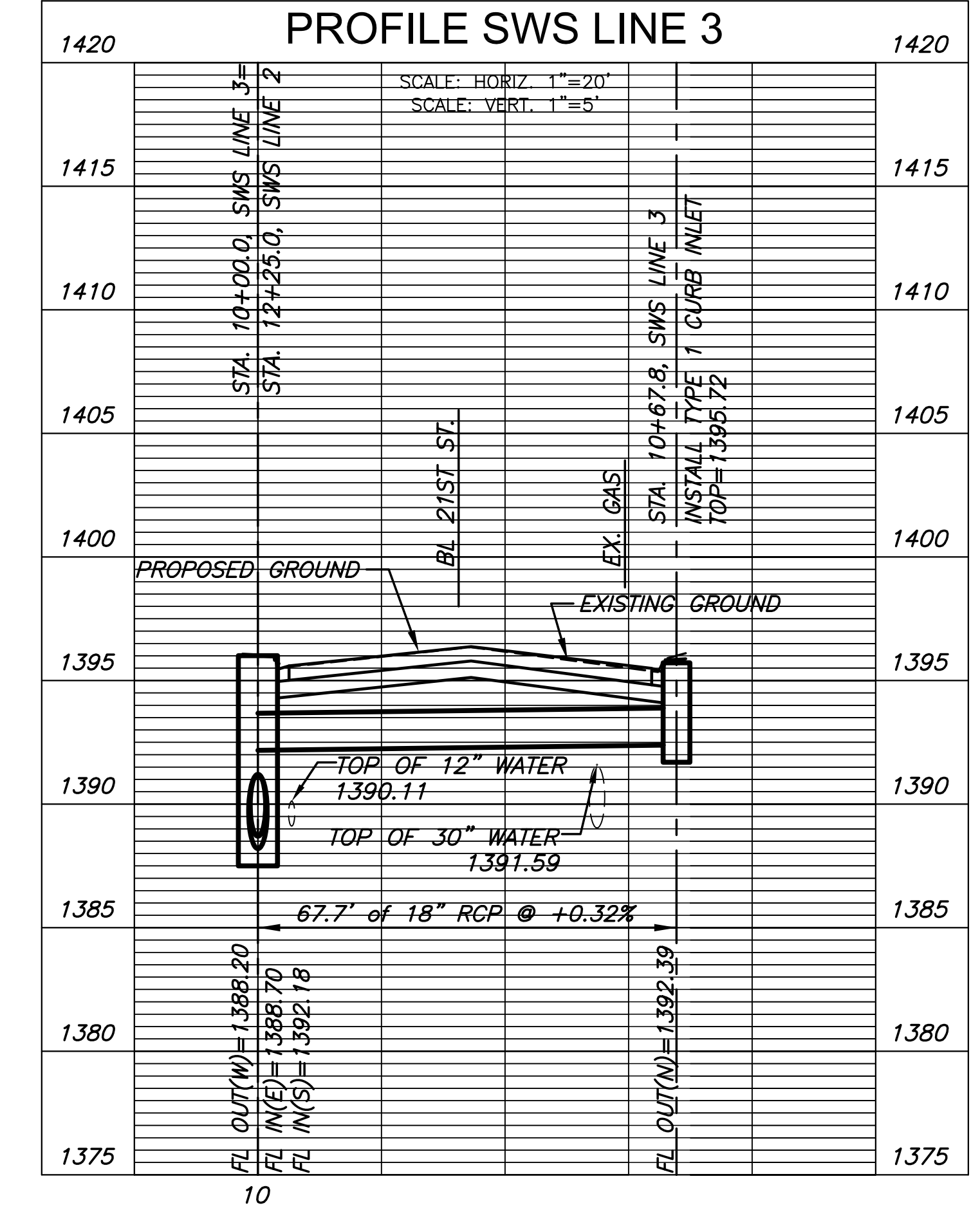
WICHITA STATE UNIVERSITY
P.O. BOX 47
WICHITA, KS 67260-0047
GEO CODE: D 31448



PLAN SWS LINE 1
PROFILE SWS LINE 1



PLAN SWS LINE 3
PROFILE SWS LINE 3



STREET IMPROVEMENTS FOR

21ST & OLIVER INTERSECTION

WICHITA, KANSAS

©2016
MKEC Engineering
All Rights Reserved
www.mkec.com
These drawings and their contents, including, but not limited to, all concepts, designs, & ideas are the exclusive property of MKEC Engineering (MKEC), and may not be used or reproduced in any way without the express consent of MKEC.

STORM SEWER
LINE 1 AND
LINE 3

| | | |
|-------------|------------|---------|
| PROJECT NO. | 472-85213 | |
| DATE | SEPT. 2016 | |
| SCALE | 1"=20' | |
| DESIGNED | DRAWN | CHECKED |
| JRA | WNJ | JRA |

| NO. | REVISION | DATE |
|-----|----------|------|
|-----|----------|------|

SHEET NO.

J:\PROJECTS\2016\19104078_COW_21ST & OLIVER_XXXXX\CAD\SHOTS\05\DWG\SWS\15178201.DWG