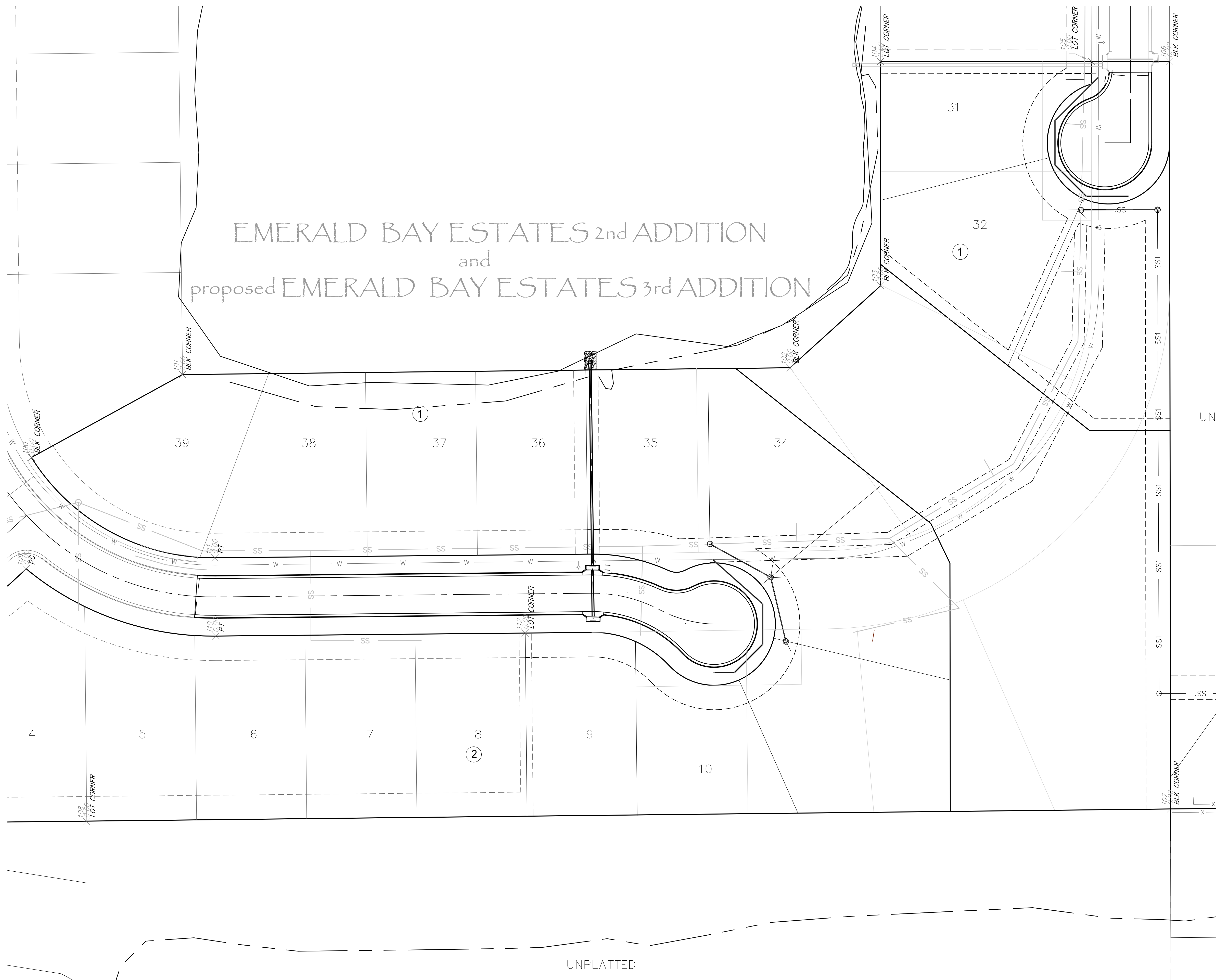
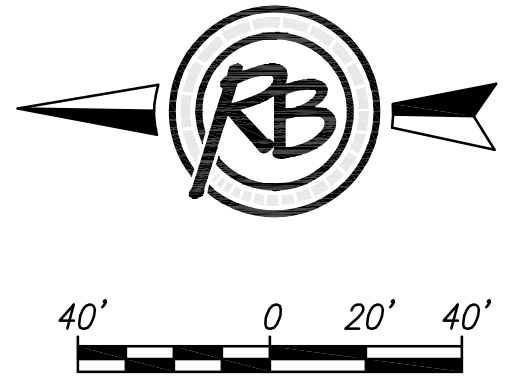


EMERALD BAY ESTATES 2nd ADDITION
and
proposed EMERALD BAY ESTATES 3rd ADDITION



Point Table

Point #	Northing	Easting	Description
100	1701411.53	1631260.46	BLK CORNER
101	1701288.04	1631328.23	BLK CORNER
102	1700791.67	1631333.78	BLK CORNER
103	1700717.56	1631400.91	BLK CORNER
104	1700717.80	1631584.01	LOT CORNER
105	1700545.58	1631584.24	LOT CORNER
106	1700481.58	1631584.33	BLK CORNER
107	1700480.77	1630973.23	BLK CORNER
108	1701366.28	1630962.86	LOT CORNER
109	1701415.76	1631169.44	PC
110	1701260.92	1631114.52	PT
111	1701261.56	1631178.51	PT
112	1701008.06	1631116.99	LOT CORNER

**EMERALD BAY ESATES 2nd
Bubble Map SS**

SEAL	RUGGLES & BOHM <small>ENGINEERING SURVEYING LANDSCAPE ARCHITECTURE GOVERNMENT</small> <small>924 NORTH MAIN WICHITA, KANSAS 67203 P (316) 264-8008 F (316) 264-4621 WWW.RKANSAS.COM</small>	DATE	
		DESIGN	
		DRAWN	
		REVIEW	
	PROJECT NUMBER 468-85150	RB JOB NO. 4770E	DWG. SCALE ...
	DRAWING FILE Emerald Bay engineering base [Bubble Map SS]	SHEET 12 OF 12	

(c) Copyright 2015, Ruggles & Bohm, P.A.