

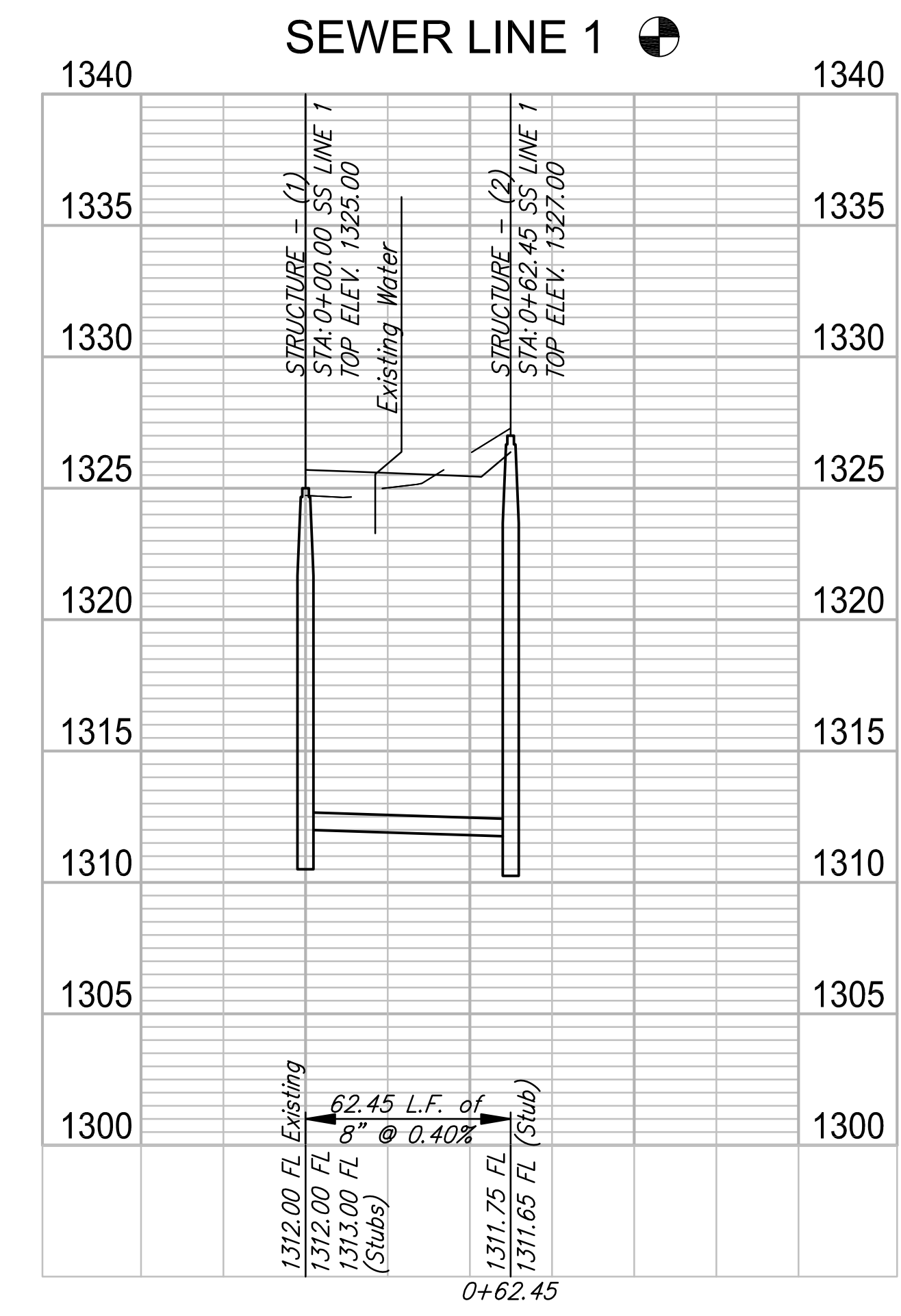
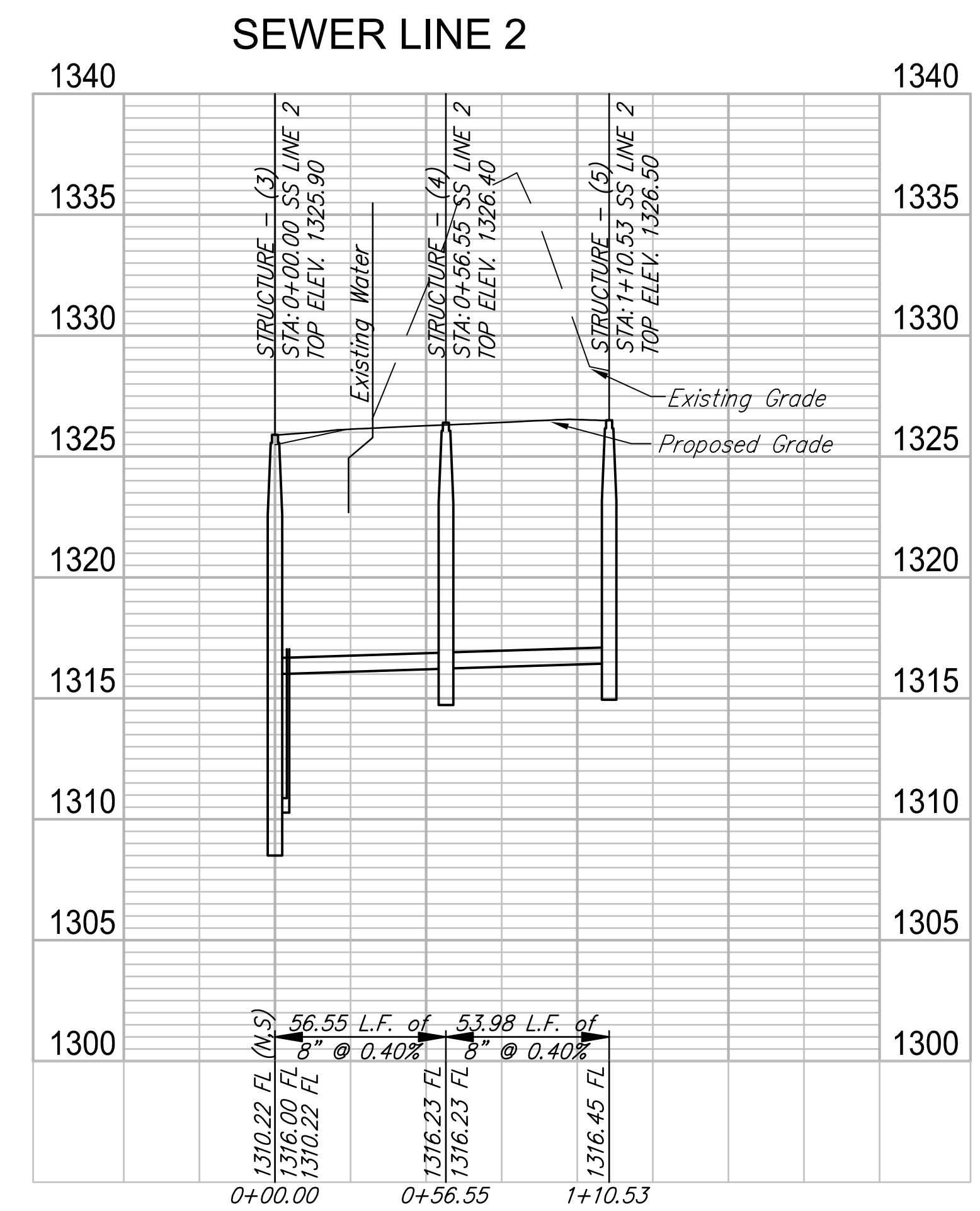
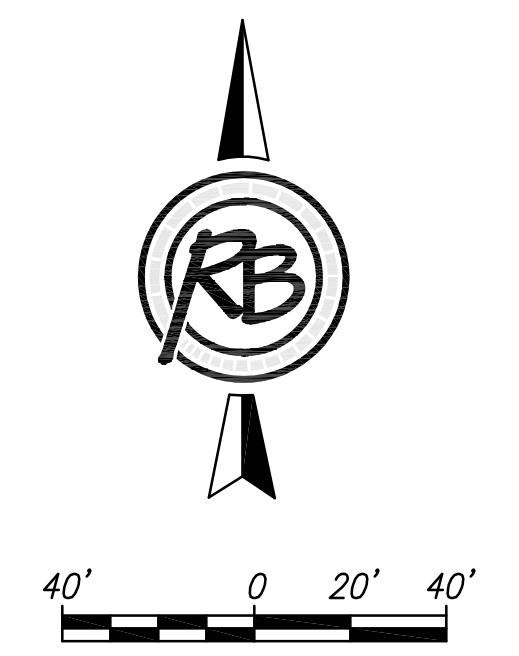
SEWER SERVICE TABLE

NUMBER	TYPE	LOCATION				FOR INFORMATION ONLY		Distance from Main to Riser (Lt./Rt.)	Distance from	
		LOT NO.	BLOCK NO.	LINE NO.	STATION \ DIRECTION	APPROXIMATE LENGTH 4" PIPE	VERTICAL		HORIZONTAL	Upstream MH
1	MH Riser	34	1	2	0+56.55, SE	7'	10'	10' SE	@ MH	
2	MH Riser	12	2	2	0+56.55, SW	7'	10'	10' SW	@ MH	
3	MH Riser	11	2	2	1+10.53, SW	7'	10'	10' SW	@ MH	
4	MH Riser	33	1	1	0+00, SW	7'	10'	10' SW	@ MH	
5	MH Riser	32	1	1	0+00, N	7'	10'	10' N	@ MH	
6	8" X 4" Tee Riser	31	1	1	- N	7'	15'	15' N	20'	107'

NOTE: Vertical Riser Pipe shall be extended to 2' minimum above ground water elevation and 4' maximum below proposed ground elevation.

THIS PIECE OF SANITARY SEWER IS BEING INSTALLED TO PREPARE FOR A FUTURE SEWER MAIN THAT WILL FLOW SOUTH. THIS WILL ALLOW THE MAIN FLOWING TO THE NORTHWEST TO BE REMOVED TO THE CUL-DE-SAC ON PARADISE AND THE CONSTRUCTION OF A CHANNEL TO CONNECT THE EXISTING EMERALD BAY POND TO THE POND ON THE PROPERTY TO THE WEST.

NOTE: RISERS MUST BE CAPPED OFF WITHIN 2' OF THE CITY MAIN WITH A GLUED CAP FITTING.



**EMERALD BAY ESATES 2nd
Sanitary Sewer
Wichita, Kansas**

RB JOB 4770E
SHEET 2 OF 12

PROJECT NUMBER 468-85150
DRAWING FILE Emerald Bay engineering base [Sanitary Sewer]

DESIGN RA CMB
UTILITY

REVISION REVIEW

DRAWN DATE

RUGGLES BOHM

REGISTERED PROFESSIONAL ENGINEER
STATE OF KANSAS
LICENSE NO. 11631