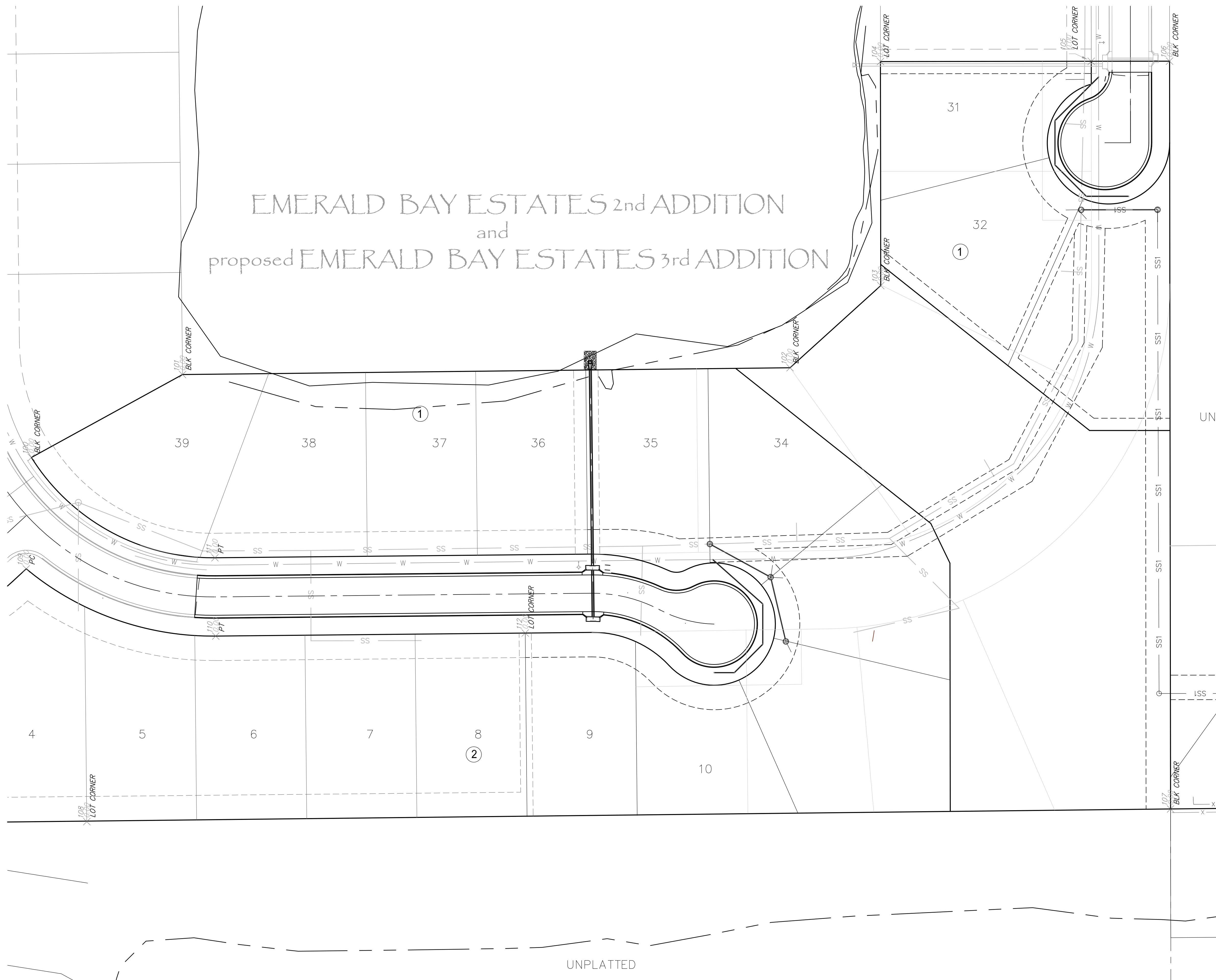
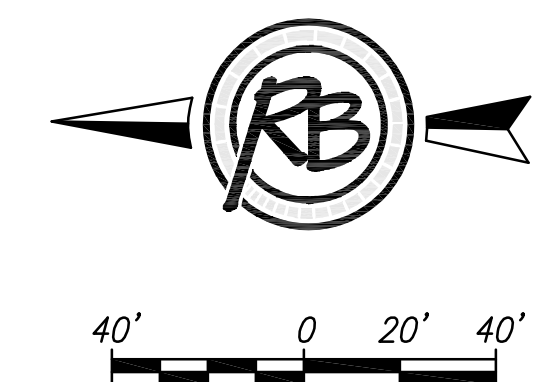


EMERALD BAY ESTATES 2<sup>nd</sup> ADDITION  
and  
proposed EMERALD BAY ESTATES 3<sup>rd</sup> ADDITION



**Point Table**

Point #	Northing	Easting	Description
100	1701411.53	1631260.46	BLK CORNER
101	1701288.04	1631328.23	BLK CORNER
102	1700791.67	1631333.78	BLK CORNER
103	1700717.56	1631400.91	BLK CORNER
104	1700717.80	1631584.01	LOT CORNER
105	1700545.58	1631584.24	LOT CORNER
106	1700481.58	1631584.33	BLK CORNER
107	1700480.77	1630973.23	BLK CORNER
108	1701366.28	1630962.86	LOT CORNER
109	1701415.76	1631169.44	PC
110	1701260.92	1631114.52	PT
111	1701261.56	1631178.51	PT
112	1701008.06	1631116.99	LOT CORNER

**EMERALD BAY ESTATES 2<sup>nd</sup>  
Bubble Map WATER**

SEAL

**RUGGLES  
& BOHM**

ENGINEERING | SURVEYING | LANDSCAPE ARCHITECTURE | GOVERNMENT

924 NORTH MAIN WICHITA, KANSAS 67203 P (316) 264-8008 F (316) 264-4621  
WWW.RBKANSAS.COM

PROJECT NUMBER	RB JOB NO.	DWG. SCALE	DATE
448-90763	4770E	...	...
DRAWING FILE	Emerald Bay engineering base [Bubble Map WATER]		SHEET
			<b>10</b>
			OF
			<b>10</b>

DATE  
DESIGN  
DRAWN  
REVIEW