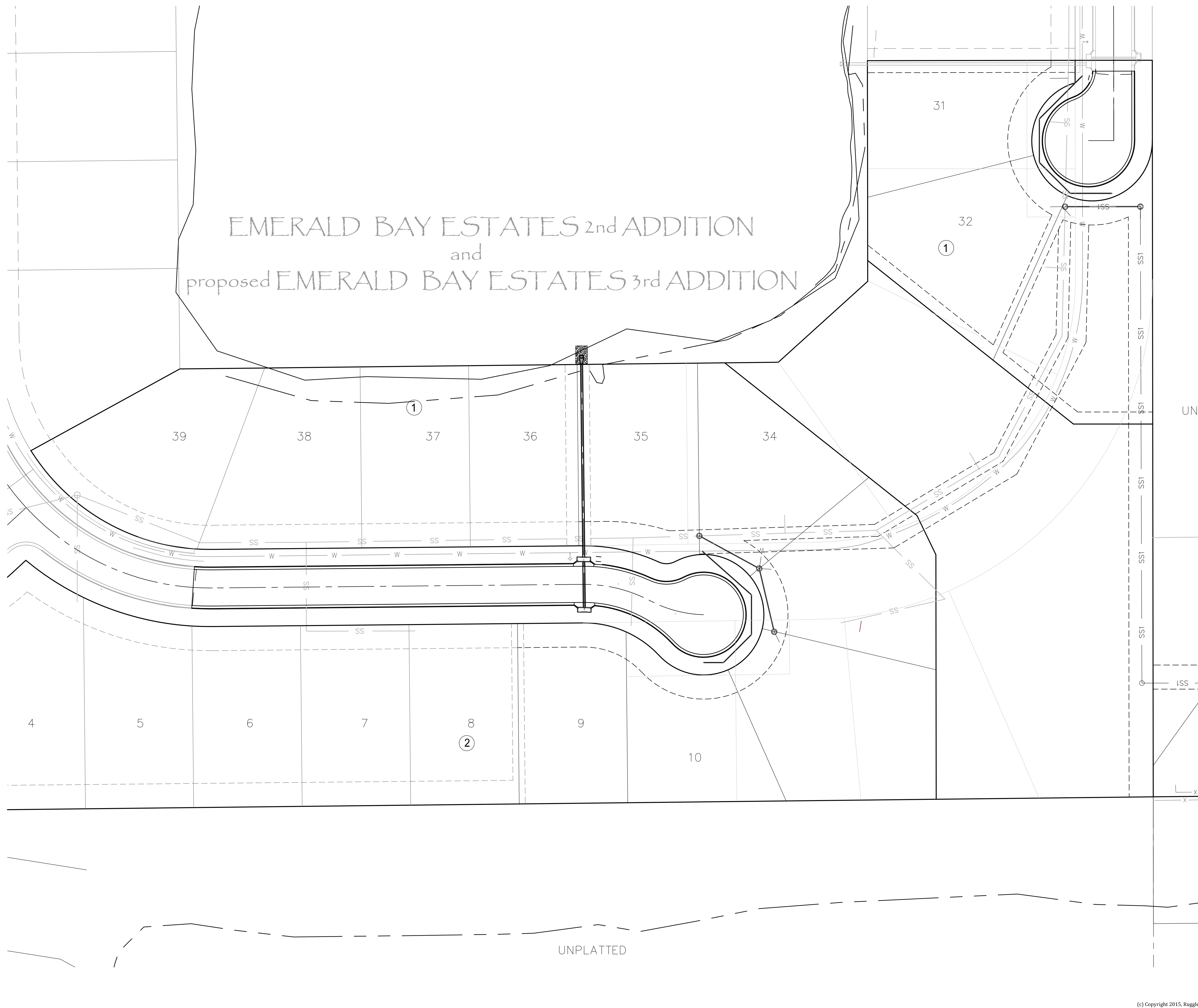
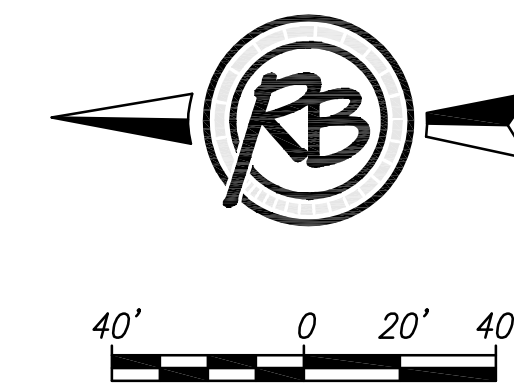


EMERALD BAY ESTATES 2nd ADDITION
and
proposed EMERALD BAY ESTATES 3rd ADDITION



Point Table

Point #	Northing	Easting	Description
100	1701411.53	1631260.46	BLK CORNER
101	1701288.04	1631328.23	BLK CORNER
102	1700791.67	1631333.78	BLK CORNER
103	1700717.56	1631400.91	BLK CORNER
104	1700717.80	1631584.01	LOT CORNER
105	1700545.58	1631584.24	LOT CORNER
106	1700481.58	1631584.33	BLK CORNER
107	1700480.77	1630973.23	BLK CORNER
108	1701366.28	1630962.86	LOT CORNER
109	1701415.76	1631169.44	PC
110	1701260.92	1631114.52	PT
111	1701261.56	1631178.51	PT
112	1701008.06	1631116.99	LOT CORNER

**EMERALD BAY ESTATES 2nd
Bubble Map SWS**



ENGINEERING | SURVEYING | LANDSCAPE ARCHITECTURE | GOVERNMENT
924 NORTH MAIN WICHITA, KANSAS 67203 P (316) 264-8008 F (316) 264-4621
WWW.RBKANSAS.COM

PROJECT NUMBER 468-85153	RB JOB NO. 4770E	DWG. SCALE ...	SHEET 16
DRAWING FILE Emerald Bay engineering base [Bubble Map SWS]			OF 16

(c) Copyright 2015, Ruggles & Bohm, P.A.