

Lateral 278, Sanitary Sewer NO. 22  
**SANITARY SEWER IMPROVEMENTS**  
 to serve

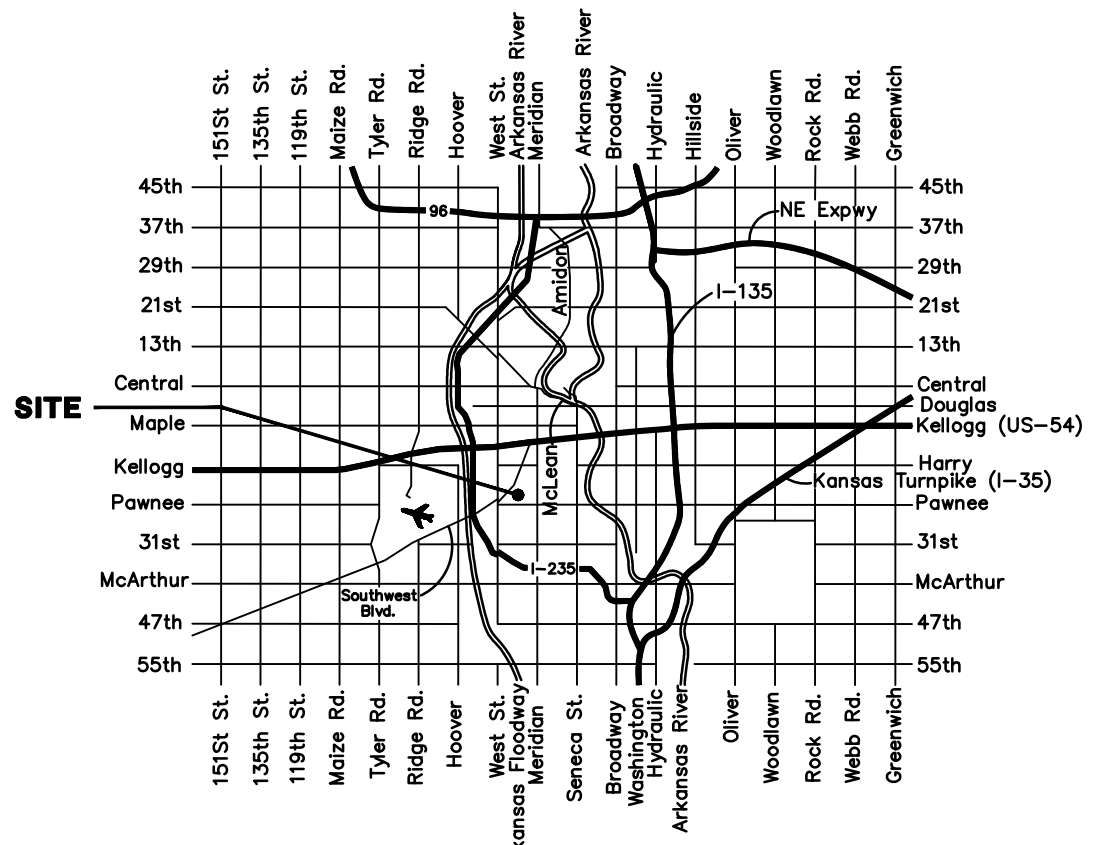
**SOUTHWEST INDUSTRIAL ADDITION**

**CITY OF WICHITA, KANSAS**

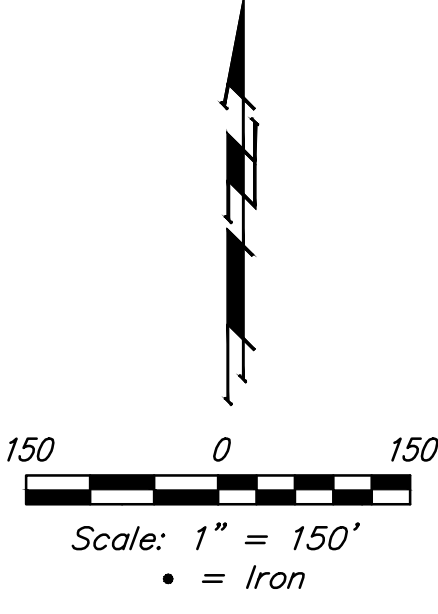
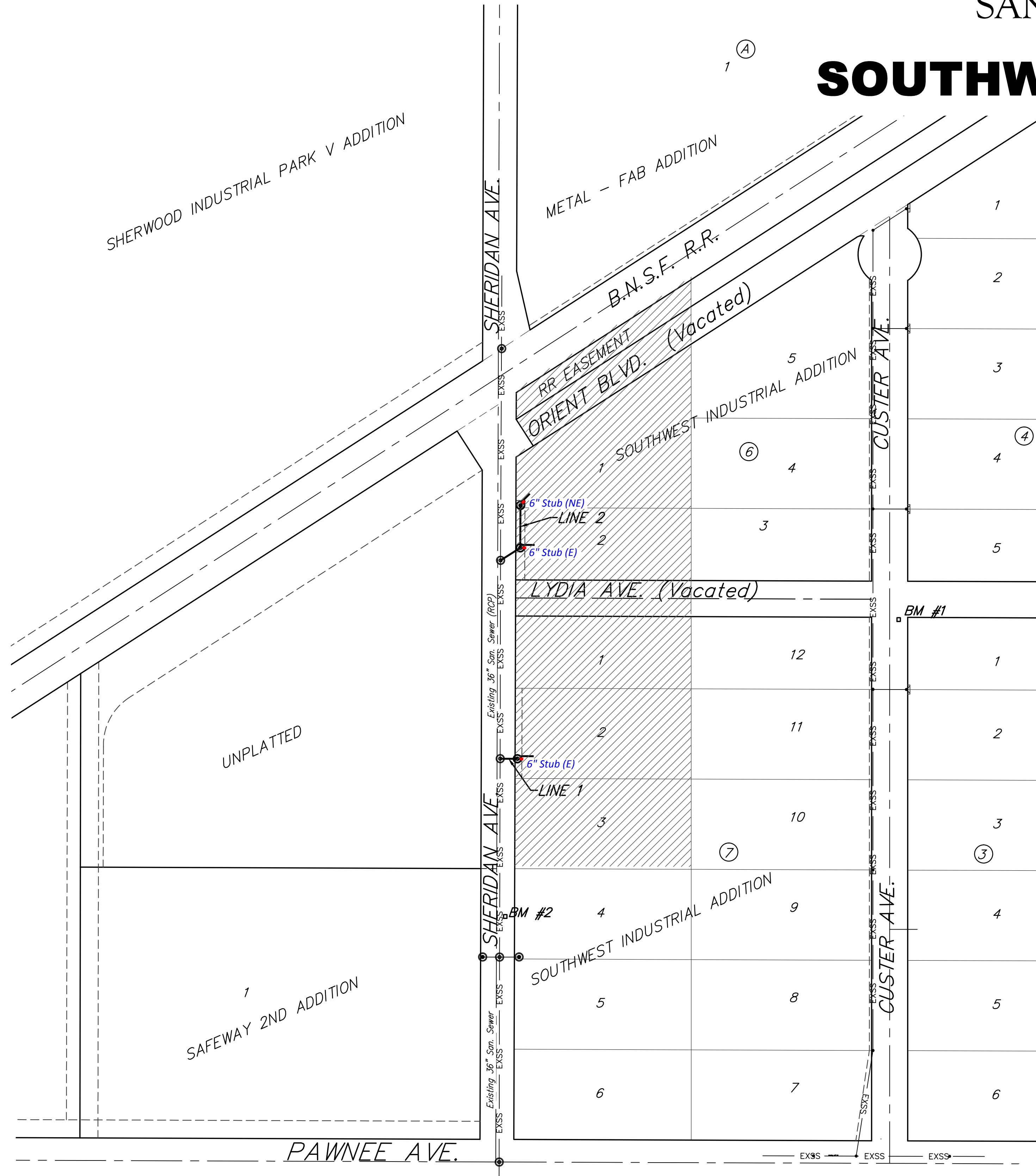
Gary Janzen, P.E. City Engineer

Project Number  
 468-85066  
 OCA Number  
 744401

**Mies Cosntruction - Contractor**  
**J. Brand - City of Wichita, Field Project Engineer**  
**T. Dvorak - City of Wichita, Inspector**  
 As-built  
 Stubs  
 Release Date: 12/15/2016  
 pdf: 10/19/2016 apr



VICINITY MAP



**SHEET INDEX**

Title Sheet	1
Line 1 & Line 2	2
Erosion Control Plan	3
Erosion Control BMP Details	4-8
Standard Manhole Detail	9
Ring & Cover Detail	10
Coordinate Sheet	11
Copy of Plat	12

**BENCHMARKS**

**BM #1**  
 Benchmark Disk adjacent to fire hydrant south end of south curb return SE corner of Custer Ave. & Lydia Ave.  
 Elev. = 1292.48 NAVD 88

**BM#2**  
 Cross in Square cut in top of curb, east side of Sheridan Ave., south end of south curb return of drive entrance to Lot 4, Block 7  
 Elev. = 1291.48 NAVD 88

**GENERAL NOTES:**

- Contractor will be required to provide notice to utility companies a minimum of forty-eight (48) hours prior to any excavation, as follows:  

Kansas One-Call	687-2470
-----------------	----------

The Contractor must notify the following in case of an emergency:

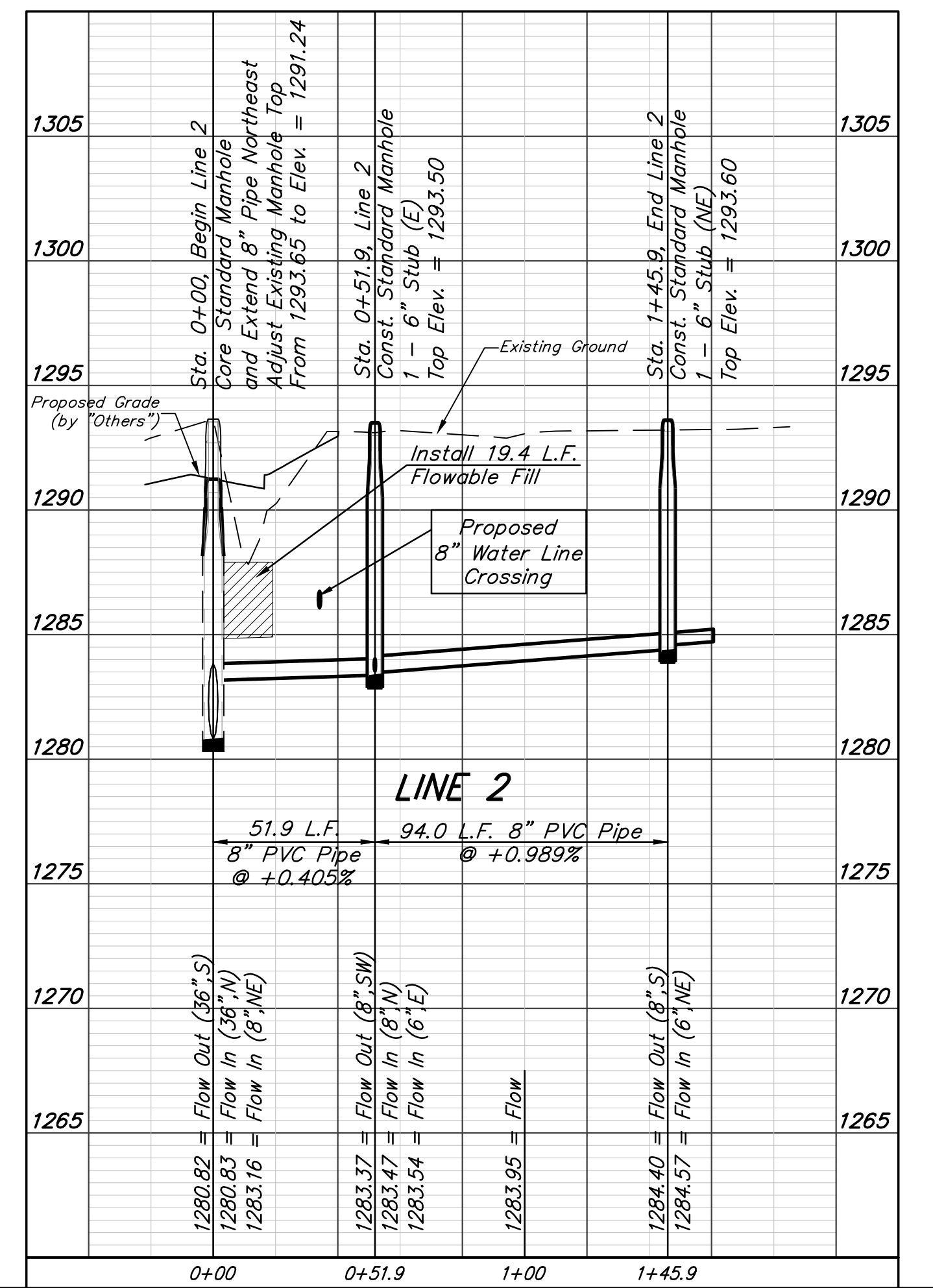
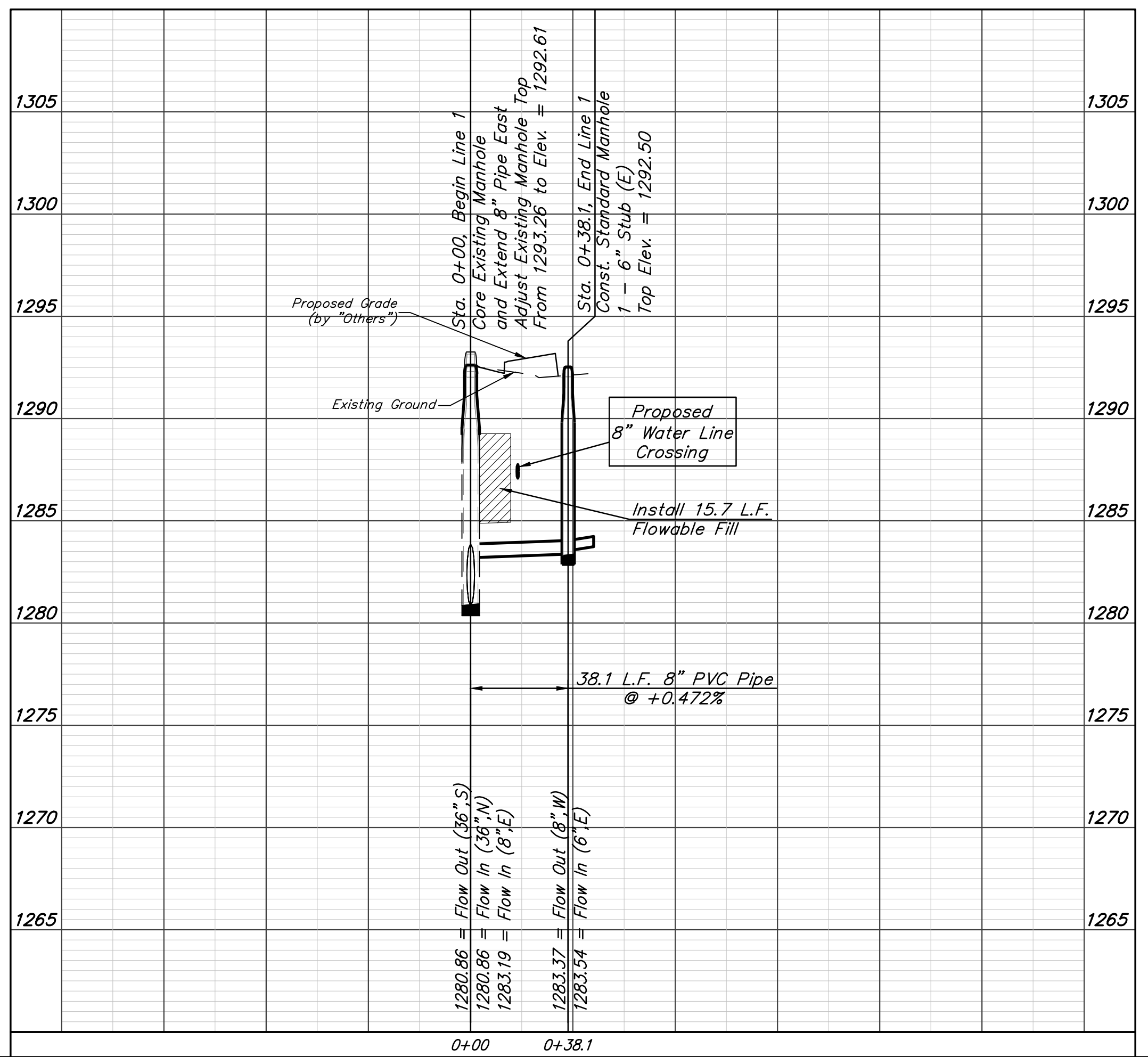
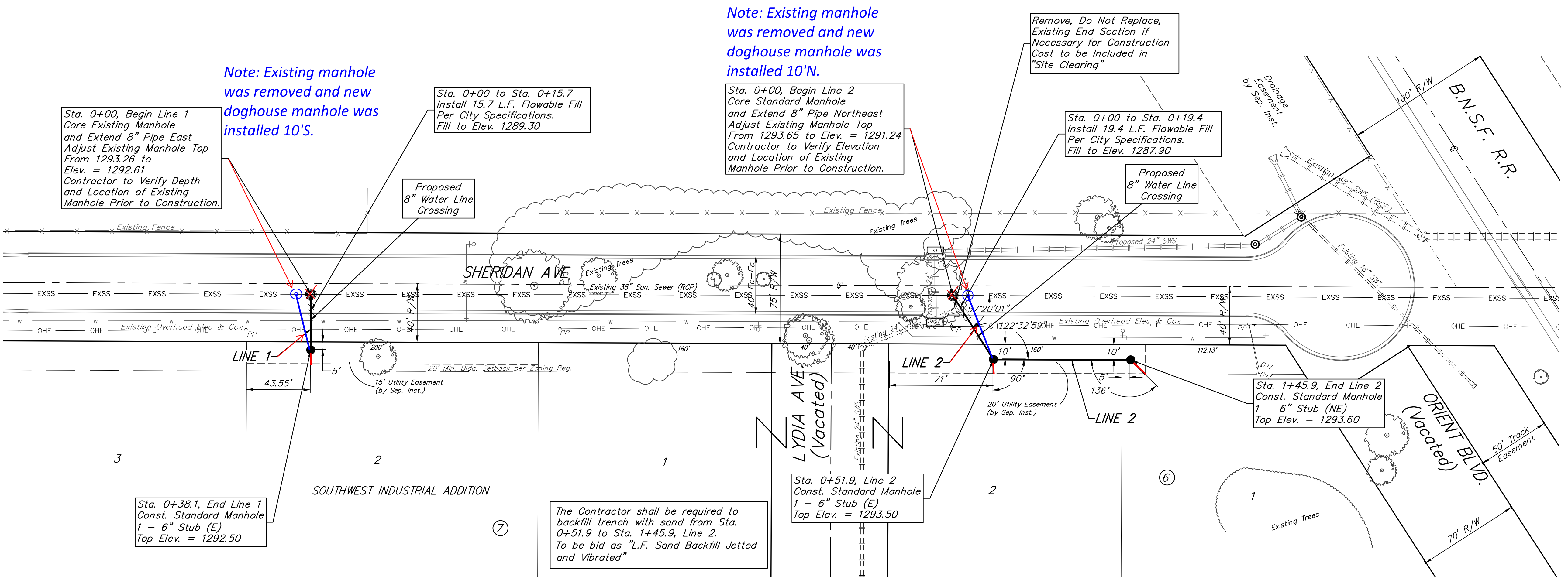
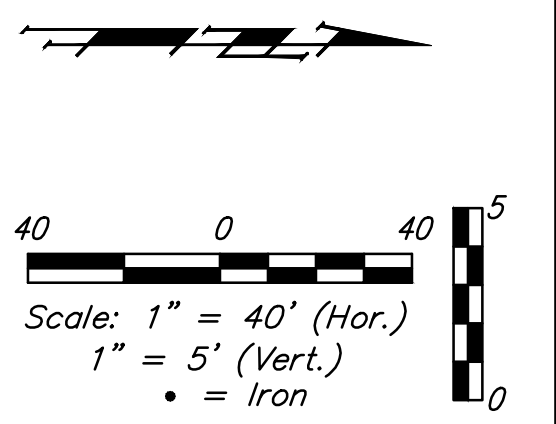
Cox Communications	262-4270
Kansas Gas Service	1-888-452-4950
Westar Energy	383-8650
Aquila Energy	1-800-303-0357
AJT&T	268-2245
City of Wichita Water Dept.	268-4563
City of Wichita Sewer Maint.	268-4024
City of Wichita Storm Sewer Maint.	268-4090
City of Wichita Traffic Maint.	268-4034
Conoco Phillips Pipeline Co.	1-877-267-2290
Southern Star Pipeline Co.	529-6600
Kinder-Morgan Pipeline Co.	1-888-844-5658
- Utility service lines, poles, valve boxes, meters, and etcetera are to be adjusted as necessary by others prior to construction unless the plans specifically call for their adjustment by the Contractor or unless the plans specifically identify a utility to be adjusted by its owner during construction. Existing utilities and their location, as shown on the plans, represent the best information obtainable for design. The Contractor will be required to work around existing utilities within the right-of-way which do not conflict with proposed construction.
- Rubble from the removal of miscellaneous structures and excess excavation which is to be wasted shall be disposed of on sites to be provided by the Contractor. These sites shall be approved by the Engineer as to suitability, appearance and site location. Locations, in the opinion of the Engineer, that will leave an unsightly appearance will not be approved. All disposal sites must be approved by the Kansas Department of Health and Environment. Material either stockpiled or disposed of in a flood plain would require a Kansas State Board of Agriculture permit. Any material dumped in waters of the United States or wetlands is subject to U.S. Corps. of Engineers permitting regulations. Any material buried or stockpiled beyond approved construction limits would require additional archaeological investigations unless buried in a previously approved borrow location.
- Trees and shrubs in public right-of-way which are in direct conflict with proposed new construction shall be removed by the Contractor with the Engineer's approval. Trees and shrubs which are not in direct conflict with proposed new construction shall be saved and protected from damage.
- The Contractor shall give all property owners and/or tenants of developed property abutting the construction of this project a minimum of ten (10) days notice prior to start of construction.
- The Contractor shall be responsible for preserving property irons. The Contractor will be required to re-establish any property irons which are damaged or destroyed by his construction operations. Such irons shall be re-established by a licensed land surveyor in accordance with state laws.
- All existing and proposed erosion control measures including silt fencing, erosion control mat, straw bales, inlet barriers, and const. entrance shall be maintained throughout construction by the contractor and until project is accepted by the City of Wichita. The on-site engineer shall complete weekly reports on the status of erosion control measures. The contractor shall be required to comply with maintenance and/or replacement of erosion control measures as determined by the on-site engineer until project is accepted by City of Wichita. Maintenance and/or replacement of erosion control measures to be paid by L.S. bid item "Maintain Existing BMP's."
- All excess excavation shall remain on-site and shall be stockpiled or spread at a location determined by the engineer.
- The Contractor shall be responsible for maintaining continuous flow of sewage through construction. Contractor's proposed method for maintaining sewage flow shall be approved by the Engineer. Cost of maintaining flow of sewage through construction will not be paid for directly and this cost shall be considered as subsidiary to the other pay items of work.
- All areas disturbed during construction shall be seeded as noted on the Erosion Control Plan. Contractor shall prepare ground per City of Wichita Specifications. All costs associated with seeding shall be included in bid item "Project Seeding"

Improvement District:

Baughman Company, P.A. 315 Ellis St. Wichita, KS 67211 P 316-262-7271 F 316-262-0149  
 ENGINEERING | SURVEYING | PLANNING | LANDSCAPE ARCHITECTURE

**BENCHMARKS:**  
 BM #1  
 Benchmark Disk adjacent to fire hydrant south end of curb, east side of Sheridan Ave., south end of south curb return of drive entrance to Lot 4, Block 7  
 Elev. = 1292.48 NAVD 88

BM #2  
 Cross in Square cut in top of curb, east side of Sheridan Ave., south end of south curb return of drive entrance to Lot 4, Block 7  
 Elev. = 1291.48 NAVD 88



Note: Existing manhole was removed and new doghouse manhole was installed 10'S.

Sta. 0+00 to Sta. 0+15.7  
 Install 15.7 L.F. Flowable Fill  
 Per City Specifications.  
 Fill to Elev. 1289.30

Note: Existing manhole was removed and new doghouse manhole was installed 10'N.

Remove, Do Not Replace, Existing End Section if Necessary for Construction Cost to be Included in "Site Clearing"

Sta. 0+00 to Sta. 0+19.4  
 Install 19.4 L.F. Flowable Fill  
 Per City Specifications.  
 Fill to Elev. 1287.90

Sta. 0+38.1, End Line 1  
 Const. Standard Manhole  
 1 - 6" Stub (E)  
 Top Elev. = 1292.50

The Contractor shall be required to backfill trench with sand from Sta. 0+51.9 to Sta. 1+45.9, Line 2.  
 To be bid as "L.F. Sand Backfill Jetted and Vibrated"

Sta. 0+51.9, Line 2  
 Const. Standard Manhole  
 1 - 6" Stub (E)  
 Top Elev. = 1293.50

Sta. 1+45.9, End Line 2  
 Const. Standard Manhole  
 1 - 6" Stub (NE)  
 Top Elev. = 1293.60



**Baughman** Southwest Industrial Addition  
**LINE 1 & LINE 2**  
 Sanitary Sewer Improvements

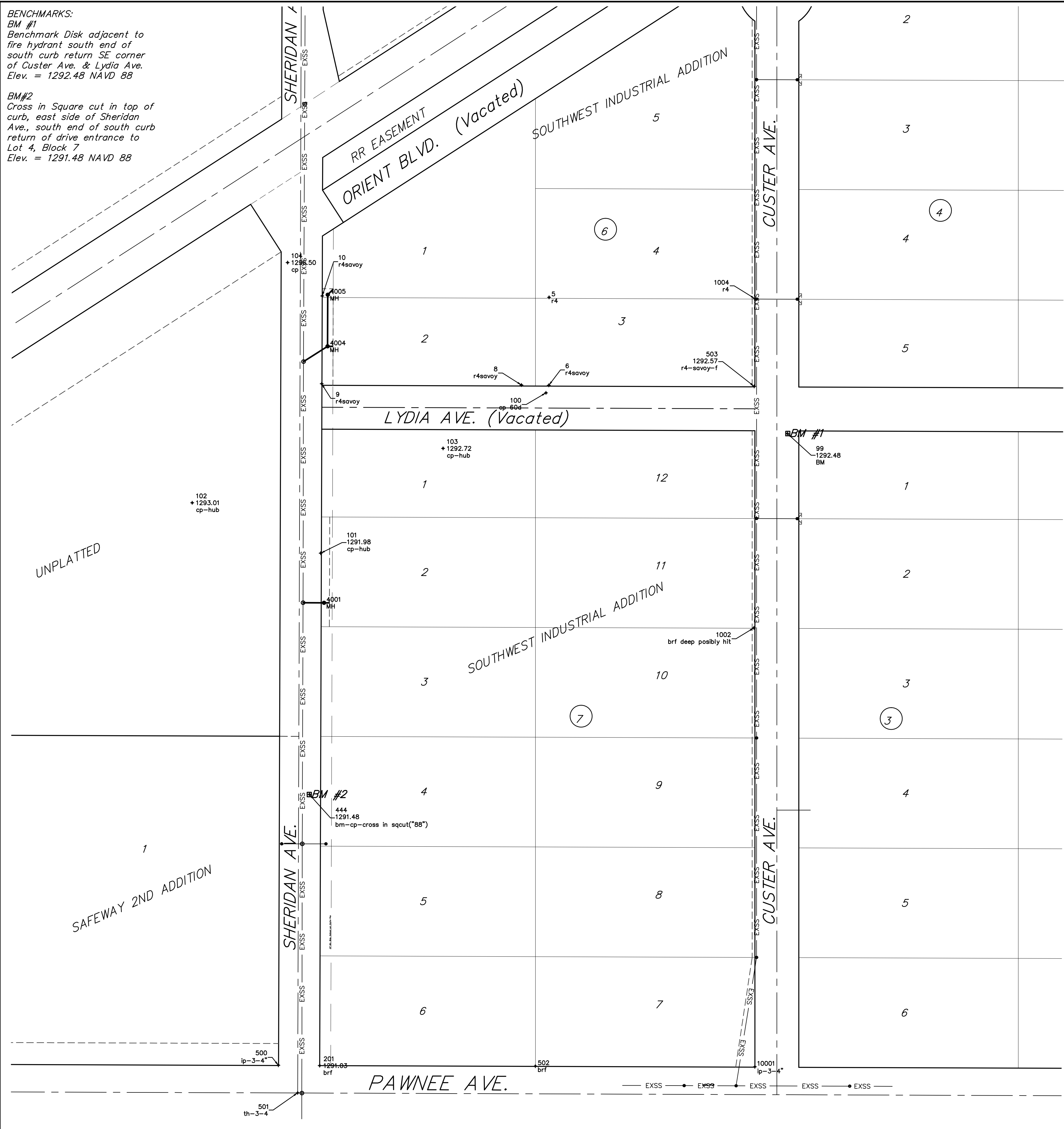
Baughman Company, P.A. 315 Ellis St. Wichita, KS 67211 P 316-262-7271 F 316-262-0149  
 ENGINEERING | SURVEYING | PLANNING | LANDSCAPE ARCHITECTURE

PROJECT NUMBER 448-85066	DESIGN NBW	DRAWN JAK
REVISIONS:	APPROVED	DATE 3/16/16
	SCALE Noted	
	SHEET	<b>2 OF 12</b>

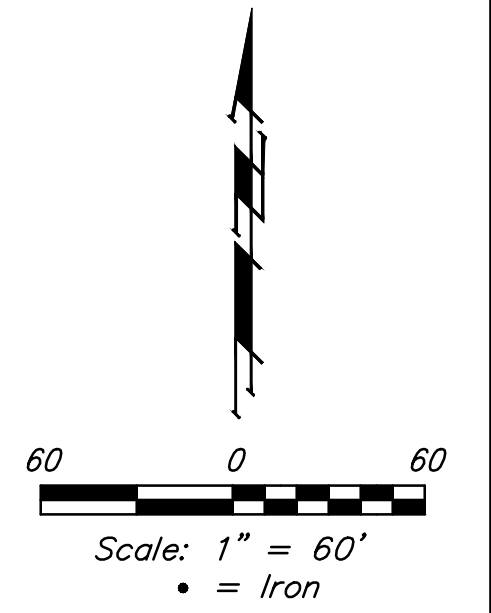
E:\Projects\Sheridan Avenue\_15-07-E277\Engineering\SS\_15-09-E304\SS PLANS.dwg

BENCHMARKS:  
 BM #1  
 Benchmark Disk adjacent to fire hydrant south end of south curb return SE corner of Custer Ave. & Lydia Ave.  
 Elev. = 1292.48 NAVD 88

BM#2  
 Cross in Square cut in top of curb, east side of Sheridan Ave., south end of south curb return of drive entrance to Lot 4, Block 7  
 Elev. = 1291.48 NAVD 88



Control Points			
Point #	Northing	Easting	Description
5	3243.06	4624.61	r4
6	3082.82	4624.14	r4savoy
8	3083.29	4574.29	r4savoy
9	3085.51	4210.18	r4savoy
10	3245.51	4211.19	r4savoy
99	2994.71	5059.09	BM
100	3068.88	4618.92	cp 60d
101	2776.67	4208.33	cp-hub
102	2868.59	3974.18	cp-hub
103	2967.66	4431.45	cp-hub
104	3306.46	4148.14	cp
201	1842.74	4206.60	brf
444	2336.86	4187.87	bm-cp-cross in sqcut("88")
500	1843.37	4131.26	ip-3-4"
501	1793.02	4166.33	th-3-4
502	1841.69	4599.58	brf
503	3080.72	4998.43	r4-savoy-f
1002	2640.61	4997.96	brf deep possibly hit
1004	3240.79	4999.70	r4
10001	1840.59	4999.57	ip-3-4"



Sanitary Sewer Points			
Point #	Northing	Easting	Description
4001	2686.27	4214.36	MH
4004	3153.71	4220.89	MH
4005	3247.69	4221.20	MH

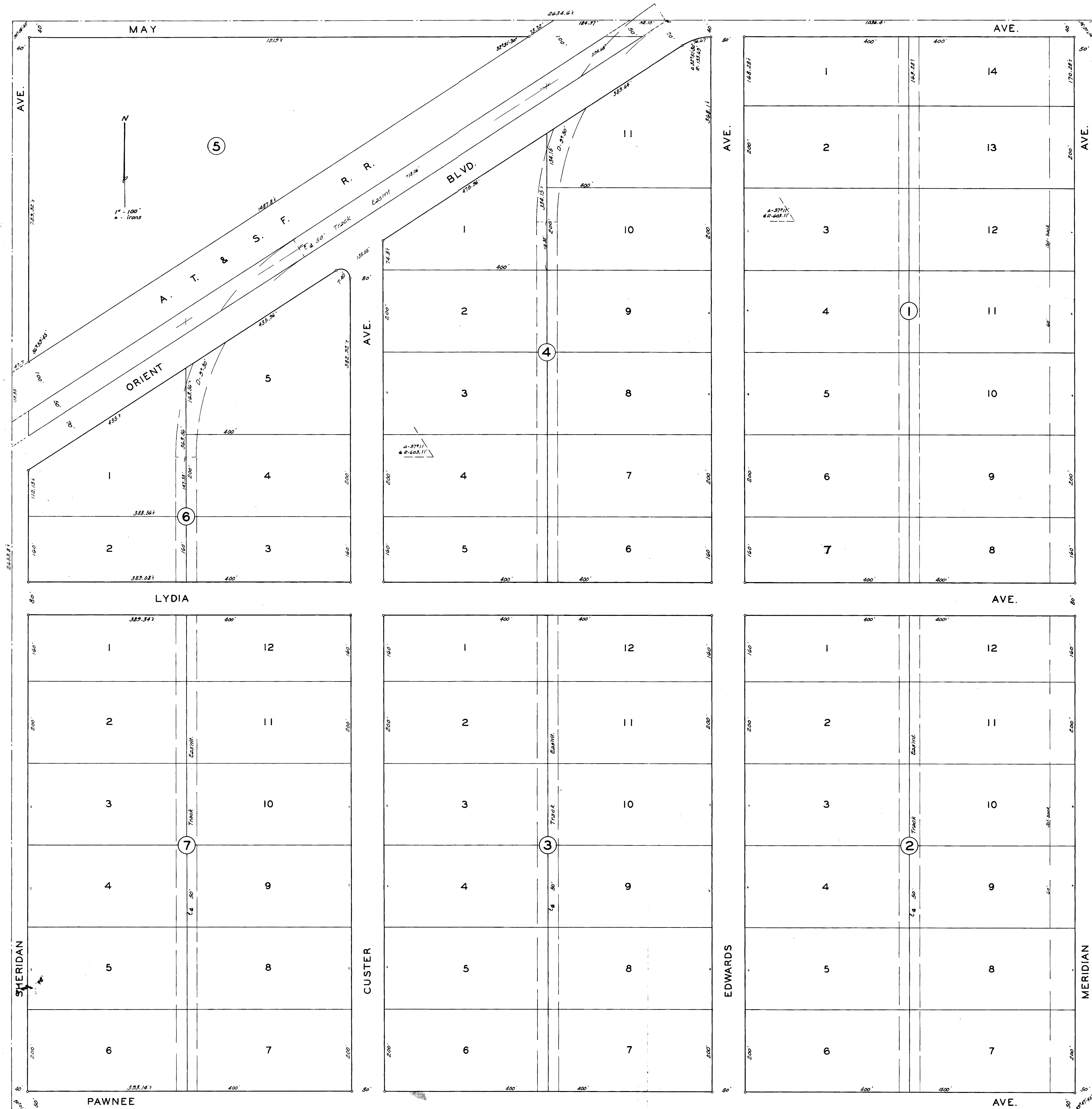


	Southwest Industrial Addition <b>COORDINATES</b> Sanitary Sewer Improvements	
	<small>Baughman Company, P.A. 315 Ellis St. Wichita, KS 67211 P 316-262-7271 F 316-262-0149          ENGINEERING   SURVEYING   PLANNING   LANDSCAPE ARCHITECTURE</small>	
PROJECT NUMBER 448-85066	DESIGN NBW	DRAWN JAK
REVISIONS:	APPROVED Noted	DATE 3/16/16
		SCALE Noted
		<b>11 OF 12</b>

# SOUTH WEST INDUSTRIAL ADDITION

TO WICHITA KANSAS

S2-5-13



State of Kansas } s.s. I, Clyde M. Baughman, Surveyor,  
Sedgewick County and State do hereby certify that  
I have surveyed and plotted "SOUTH WEST  
INDUSTRIAL ADDITION" to Wichita, Kansas and  
that the accompanying plat is a true and cor-  
rect exhibit of the property surveyed described  
as follows: The S.E. 1/4 of Sec. 36, Twp. 27-S,  
R. 1-W. of the 6th P.M., except the right of way,  
of the A.T. & S.F. R.R.

*Clyde M. Baughman* Surveyor

Know all men by these presents  
that I, Josephine Alexander have caused the  
land described in the surveyors certificate to  
be platted into lots, blocks, avenues and a bou-  
levard to be known as "SOUTH WEST INDUSTRIAL  
ADDITION" to Wichita, Kansas. Special easements  
are hereby provided for the construction, main-  
tenance and operation of railroad tracks to said addi-  
tion. The avenues and boulevard are hereby dedicat-  
ed to and for the use of the public.

*Josephine Alexander*

State of Kansas } s.s. Be it remembered that on  
this 14 day of July, 1933 before me  
a notary public in Sedgewick County and State  
came Josephine Alexander, to me known to be  
the same person who executed the foregoing  
instrument of writing and duly acknowledged the  
execution of the same to be her voluntary act and  
deed. In testimony whereof I have hereunto set my  
hand and affixed my notarial seal the day and  
year above written.

*Walter Buehler* Notary Public  
My Commission Expires June 26, 1937

This plat of "SOUTH WEST  
INDUSTRIAL ADDITION" to Wichita, Kansas, has been  
submitted to and considered by the City Planning  
Commission of Wichita, Kansas, and is hereby  
transmitted to the Board of City Commissioners  
with the recommendation that such plat be ap-  
proved as proposed. Dated this 14 day of  
July, 1933.  
The City Planning Commission of Wichita, Kansas.

*Ernest W. ...* Vice  
*John Thomas ...* Secretary

Approved by the Board of City  
Commissioners this 14 day of July,  
1933.

*Walt Keeler* Mayor  
*Charles ...* City Clerk

Approved by the Board of  
County Commissioners this 5th day of  
August, 1933.

*Charles ...* County Clerk

Entered on transfer record this  
8th day of August, 1933.

*Charles ...* County Clerk

State of Kansas } s.s. This is to certify that this  
plat was filed for record in the office of the  
Register of Deeds this 8th day of August,  
1933, at 8:45 o'clock, A. M., and is duly re-  
corded.

*C. S. ...* Register of Deeds  
*Harry H. ...* Deputy