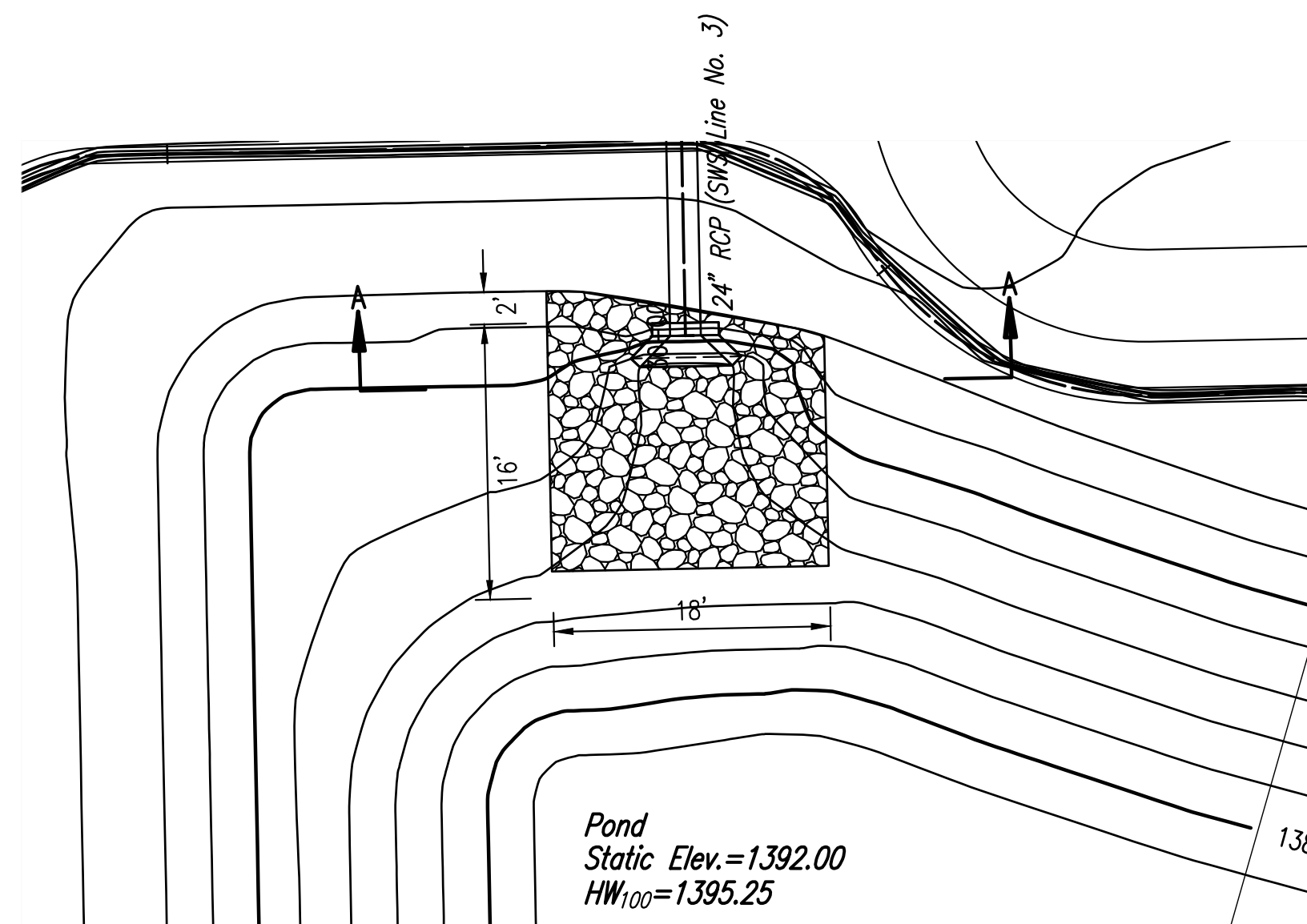


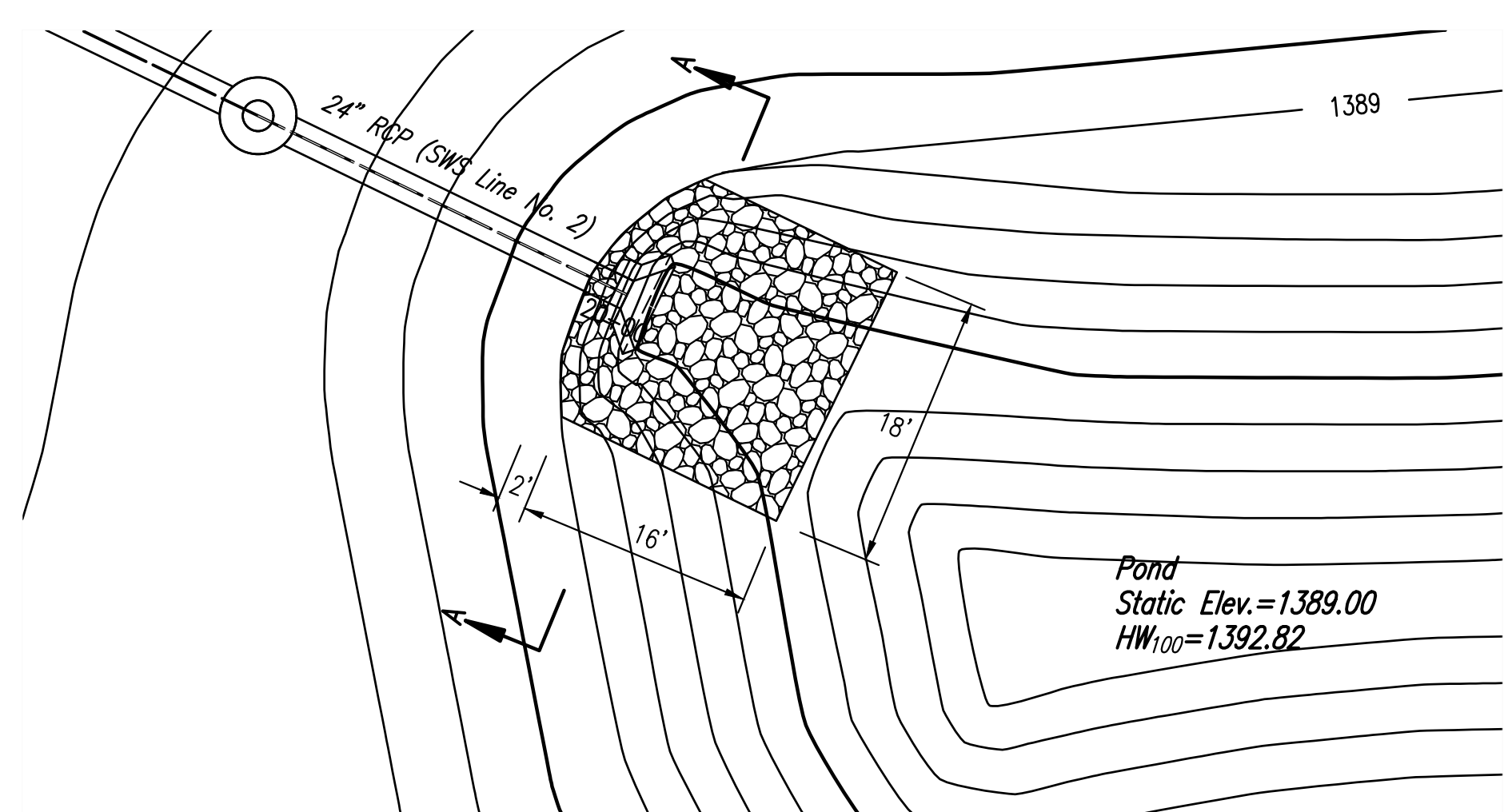
**RIPRAP PLAN**  
(SWS Line No. 1)

SCALE: 1"=10'



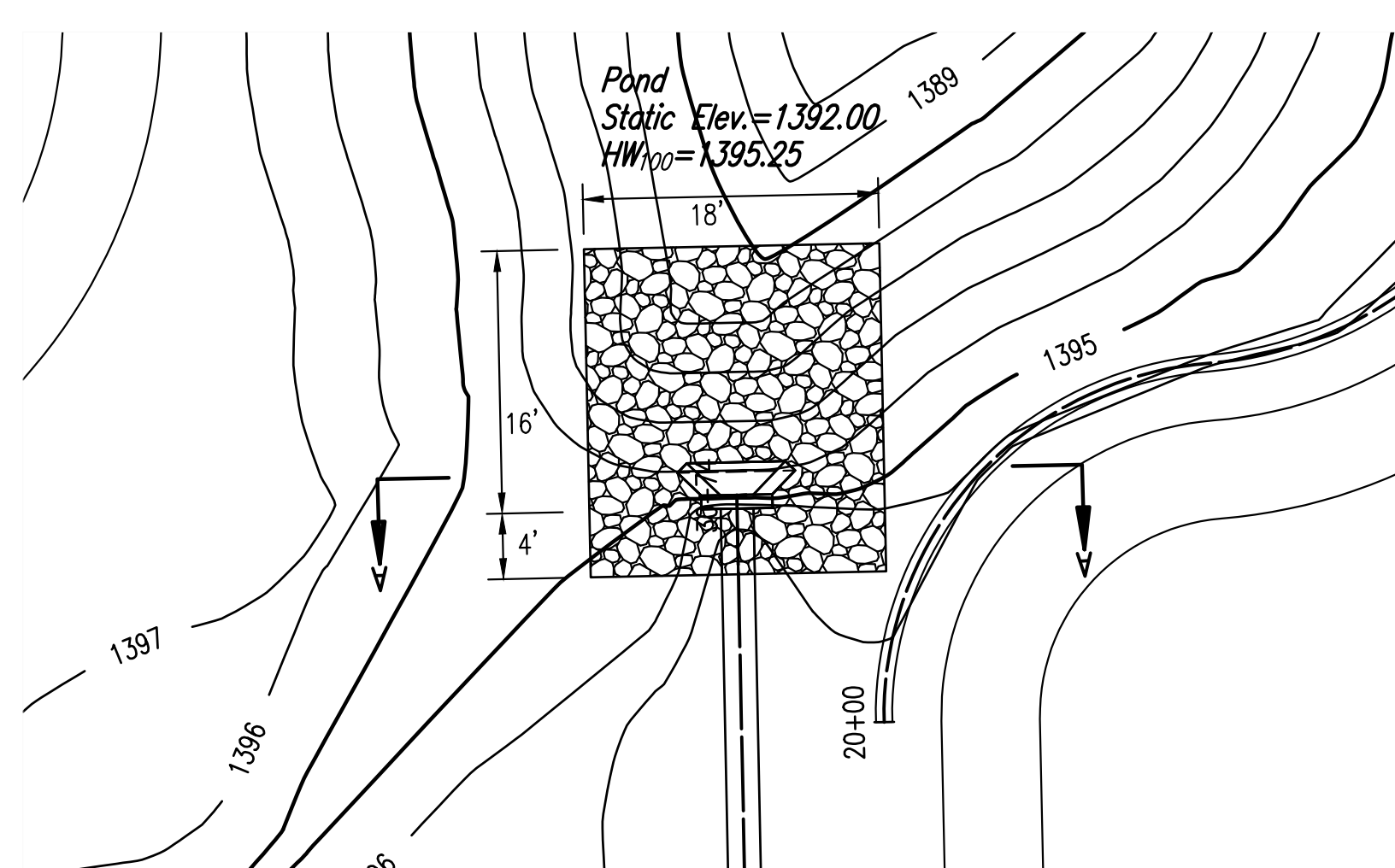
**RIPRAP PLAN**  
(SWS Line No. 3)

SCALE: 1"=10'



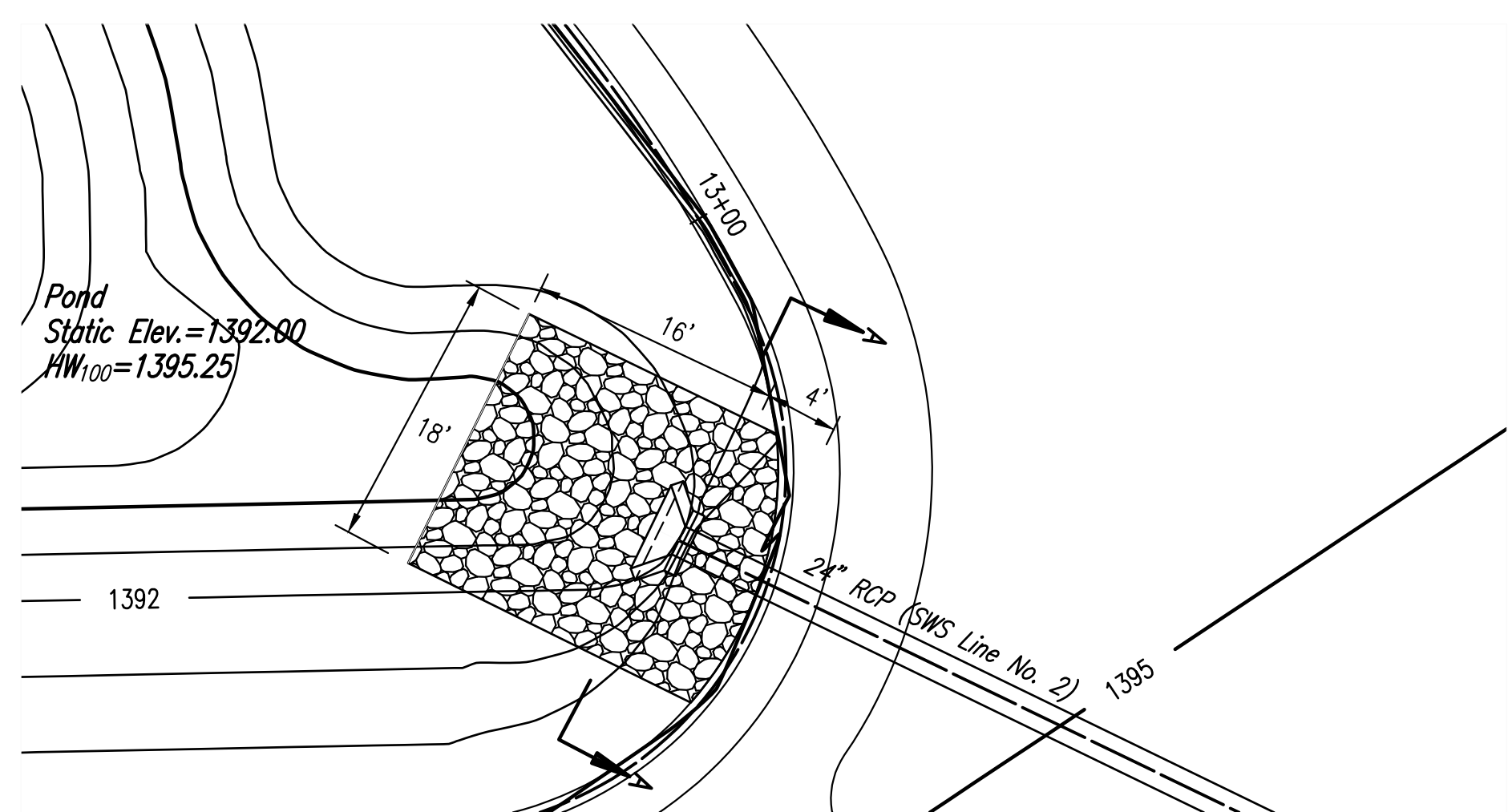
**RIPRAP PLAN**  
(SWS Line No. 2)

SCALE: 1"=10'



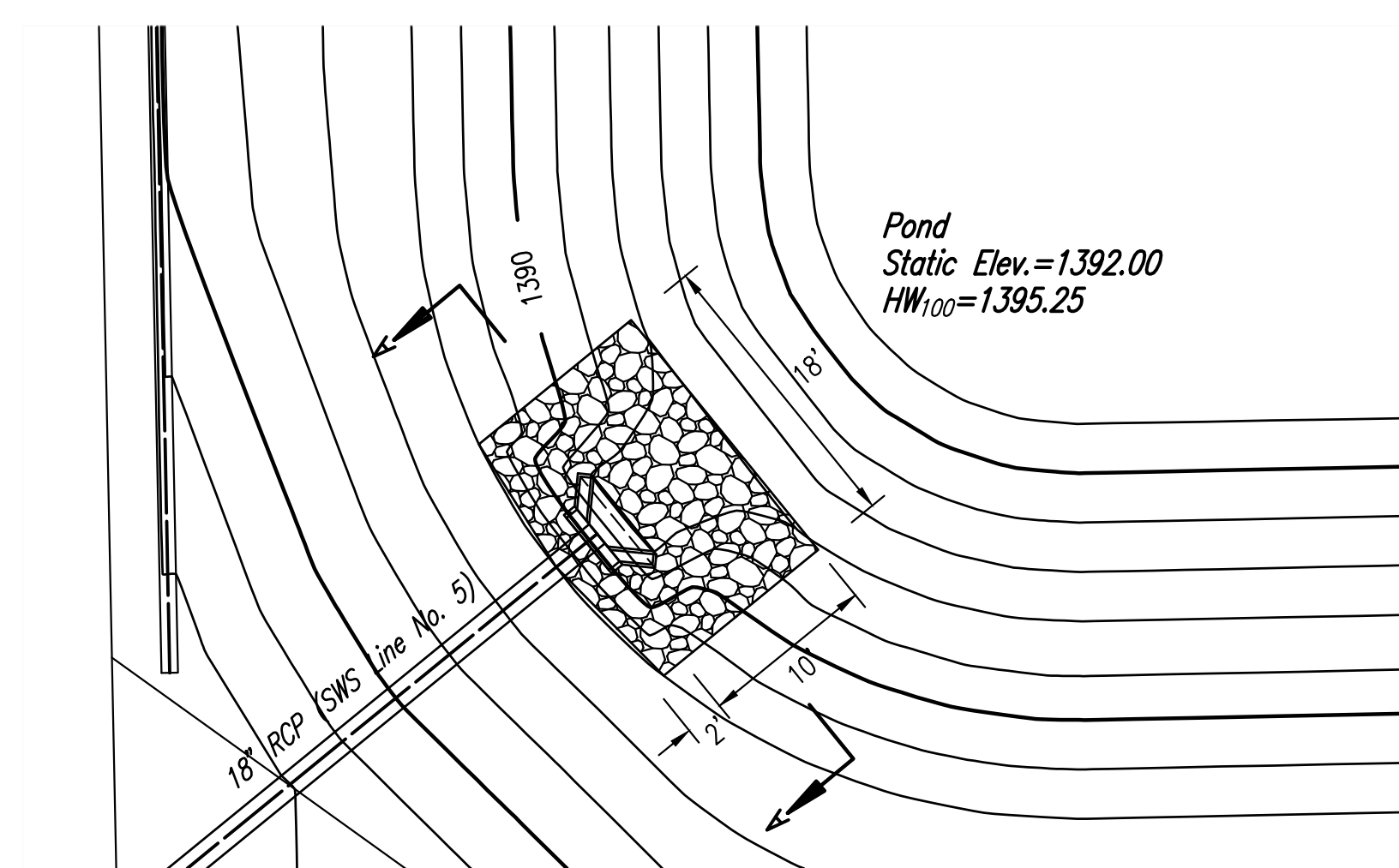
**RIPRAP PLAN**  
(SWS Line No. 3)

SCALE: 1"=10'



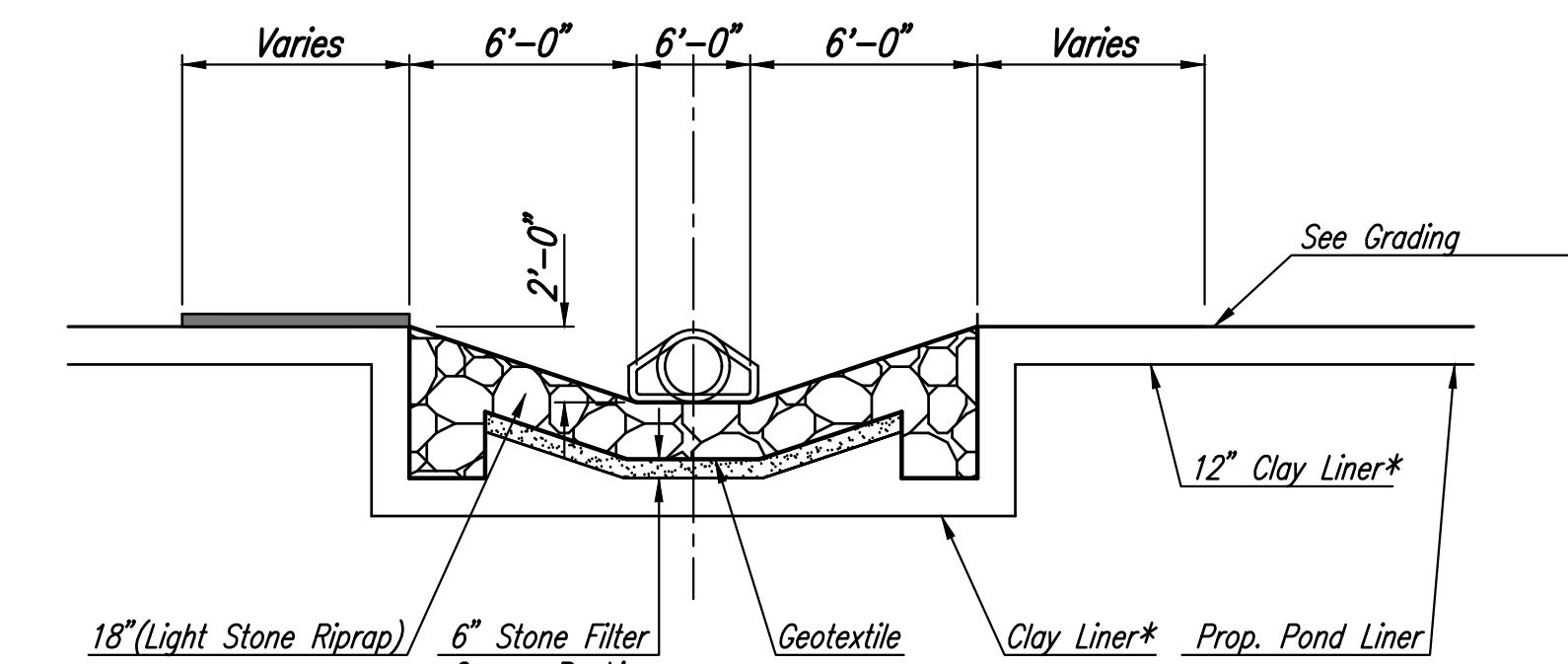
**RIPRAP PLAN**  
(SWS Line No. 2)

SCALE: 1"=10'



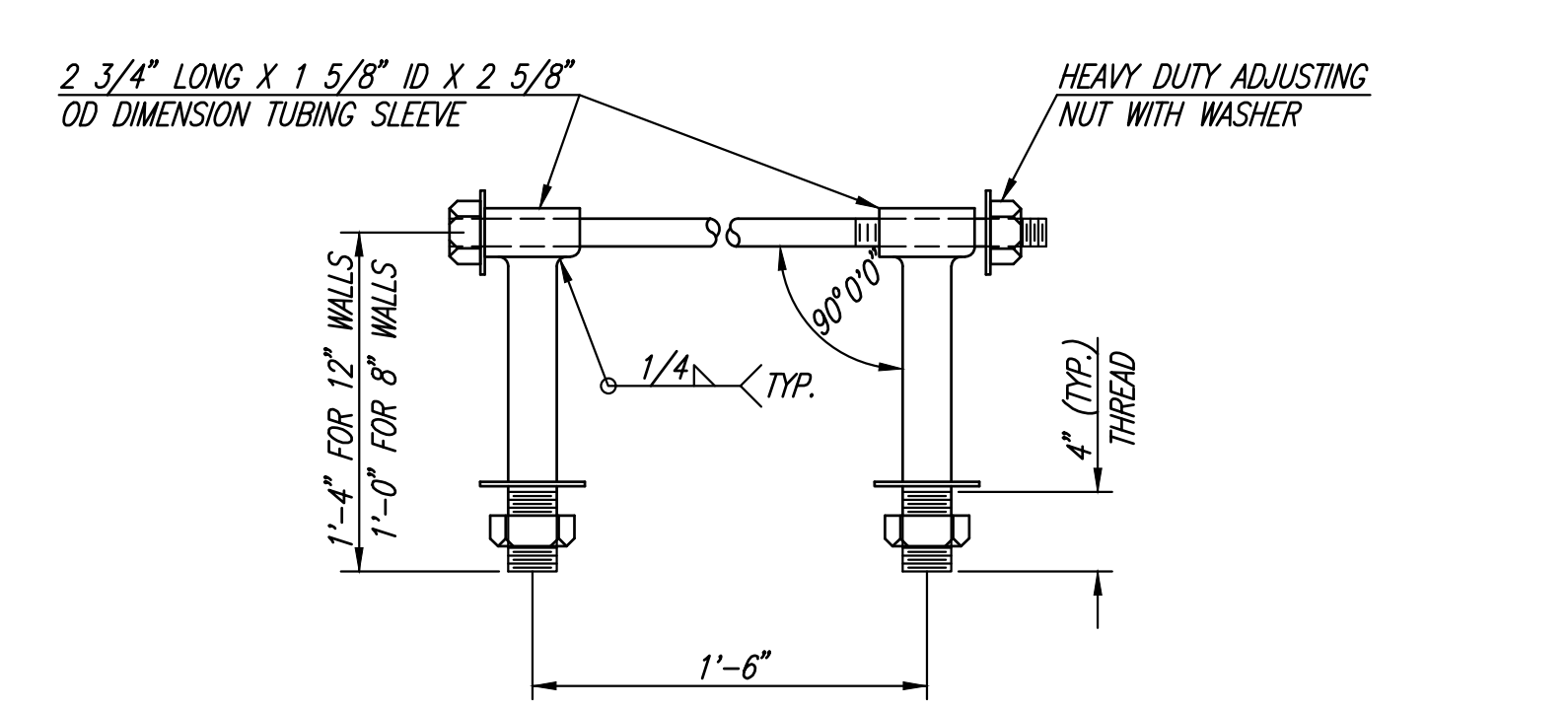
**RIPRAP PLAN**  
(SWS Line No. 5)

SCALE: 1"=10'



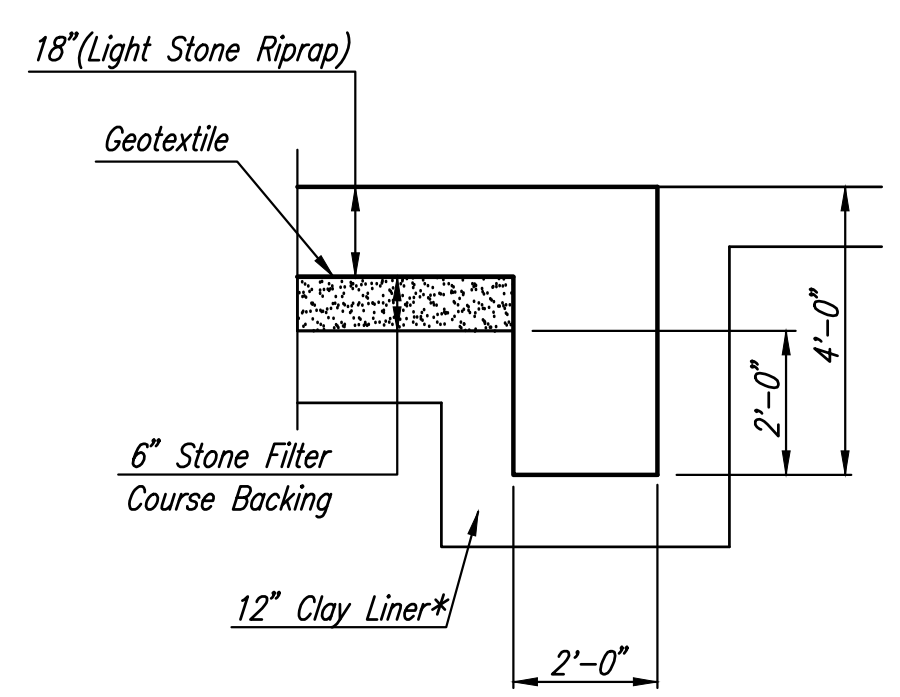
**SECTION A-A**

\* CLAY LINER SHALL MEET THE SAME REQUIREMENTS AS POND LINING.



**HEAVY DUTY (H.D.) COUPLER**  
NO SCALE

- NOTES
1. BOLTS TO BE A-36 1 1/2" DIAMETER.
  2. BOLTS, NUTS, WASHERS AND SLEEVES TO BE ZINC PLATED.
  3. WASHERS TO BE 3 1/2" O.D. X 7 GAUGE.
  4. SHIP WITH NUTS AND WASHERS PLACED ON BOLTS.



**TYPICAL SECTION THRU TOEWALL**  
NO SCALE

- NOTES
1. ALL RIPRAP FOR THIS PROJECT SHALL BE NATURAL STONE. NEITHER BROKEN CONCRETE, FABRIC ENVELOPE, NOR PREMIXED DRY PACKAGED CONCRETE BAG ALTERNATES WILL BE ALLOWED.
  2. TOEWALLS SHALL BE INSTALLED ALONG ALL EDGES OF STONE RIPRAP OR AS SHOWN ON PLANS.
  3. GROUTING OF THE SURFACE OF THE RIPRAP SHALL NOT BE PERFORMED. GROUTING OF THE TOEWALLS SHALL BE PERFORMED PER SPECIFICATIONS.

Sowed 11-30-2016 10:01:24 AM by KURTIS DEKAT  
 Plot Scale 1:1 12-05-2016 11:20:31 AM by KURTIS DEKAT  
 U:\Wichita-Civil\2015\15627\022\Drawings\15627-002-16C-RIPRAP AND MISCELLANEOUS DETAILS

	Revision		By	Date
	TALLGRASS EAST COMMERCIAL 2ND ADDITION STORM WATER DRAIN NO. 407			
	<b>RIPRAP AND MISCELLANEOUS DETAILS</b> GARY JANZEN, P.E. - CITY ENGINEER CITY OF WICHITA PROJECT NO. 468-85097			
	PROFESSIONAL ENGINEERING CONSULTANTS, P.A. 303 SOUTH TOPEKA WICHITA, KS 67202 316-262-2691 www.pec1.com			
Designed by	JAG, TBK	Job No.	31-15627-002	Sht. 16 of 23
Drawn by	BJS	Date	April 2016	