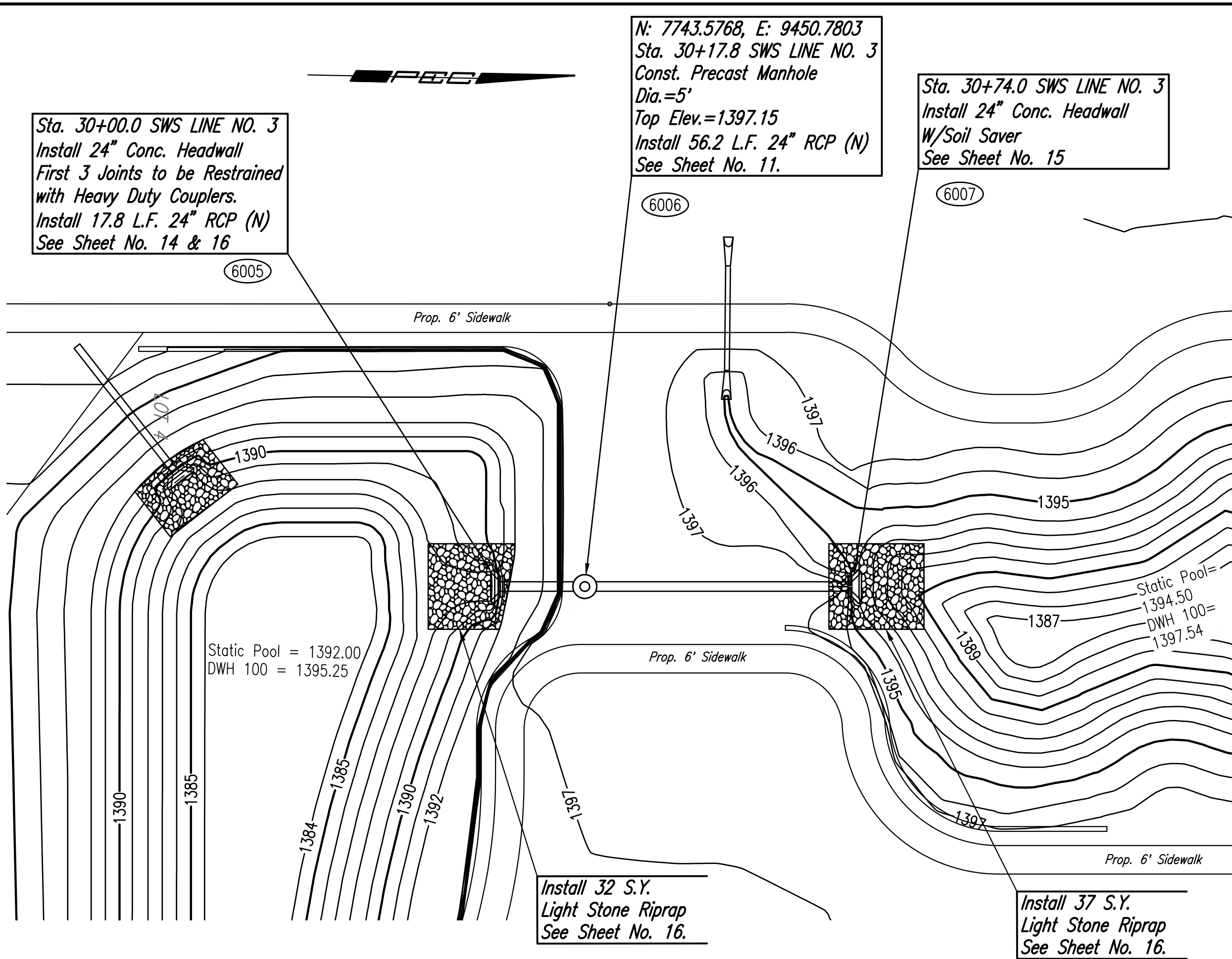


PLAN
 CHECKED
 CHECKED
 BY
 DATE

PROFILE
 CHECKED
 CHECKED
 BY
 DATE

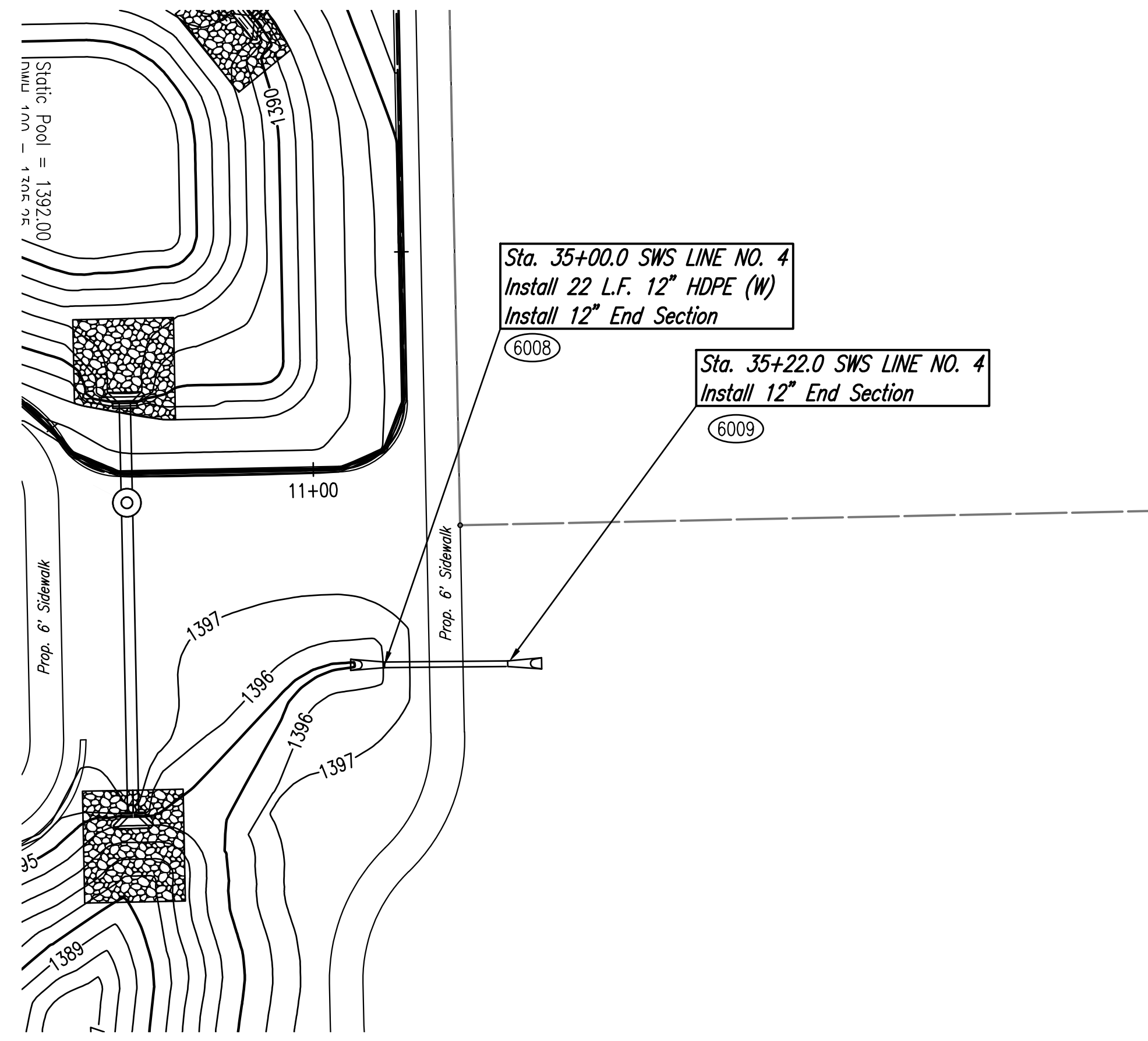
Saved: 12-05-2016 10:10:05 AM by JAG
 Plot Scale: 1:12-05-2016 11:16:34 AM by KURTIS DEWAT
 U:\Wichita-Civil\2015\15627\002\Drawings\15627-002-07c-STORM WATER SEWER NOS. 3 & 4



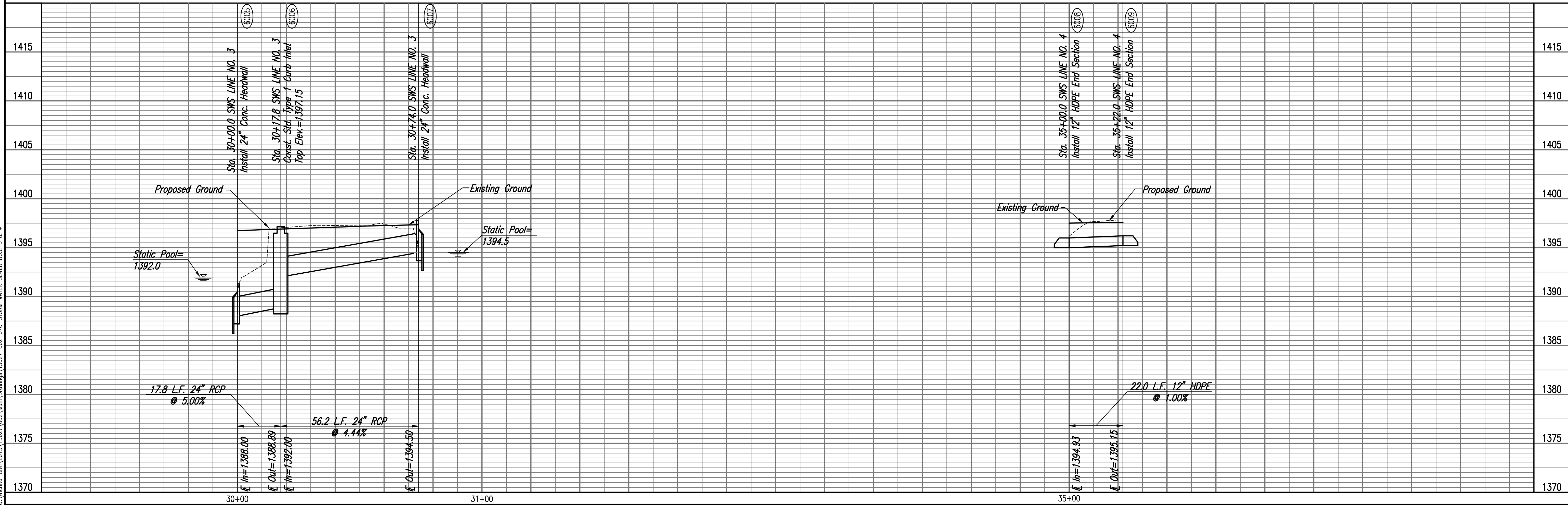
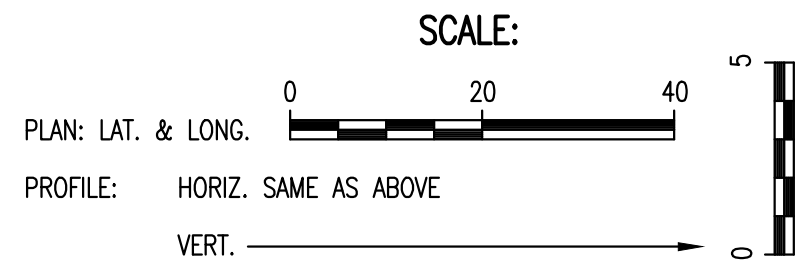
SWS LINE NO. 3

POINT	NORTH	EAST
6005	7,725.8217	9,451.1473
6006	7,743.5768	9,450.7803
6007	7,799.8127	9,449.6181
6008	7,772.5647	9,404.6771
6009	7,772.3492	9,382.6764

6005 = COORDINATE POINT NO.



SWS LINE NO. 4



TALLGRASS EAST COMMERCIAL 2ND ADDITION
 STORM WATER DRAIN NO. 407
STORM SEWER LINE NOS. 3 & 4
 GARY JANZEN, P.E. - CITY ENGINEER
 CITY OF WICHITA PROJECT NO. 468-55097

PROFESSIONAL ENGINEERING CONSULTANTS P.A.
 303 SOUTH TOPEKA WICHITA, KS 67202
 316-262-2691 www.pec1.com
PEC
 Designed By: JAG, TBK
 Drawn By: BUS
 Job No.: 31-15627-002
 Date: April 2016
 Sheet 07 of 23