

BENCHMARKS:
 Small RR spike in north face of high line pole, 2nd pole west of 135th so. side of 13th Street North.
 Elev. = 1359.54 (City Datum)

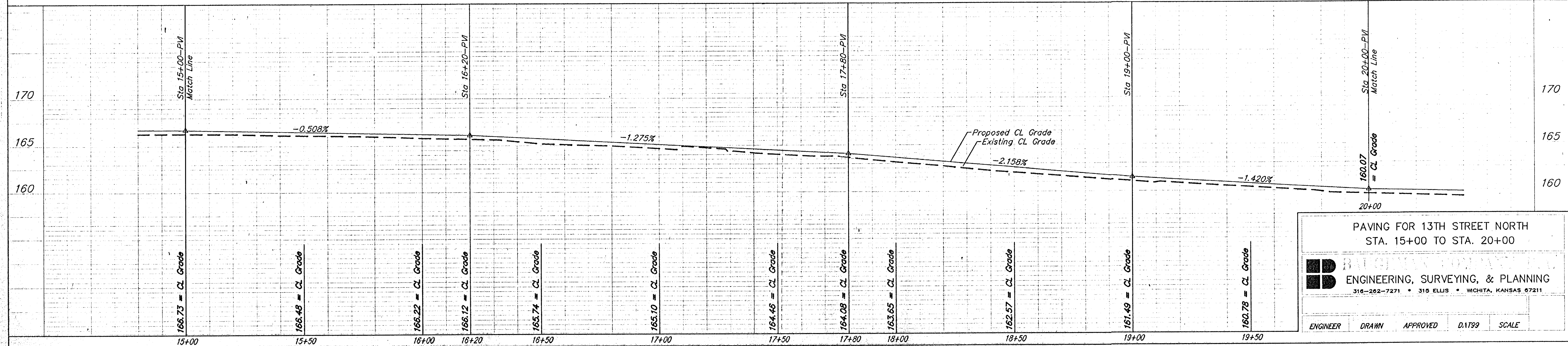
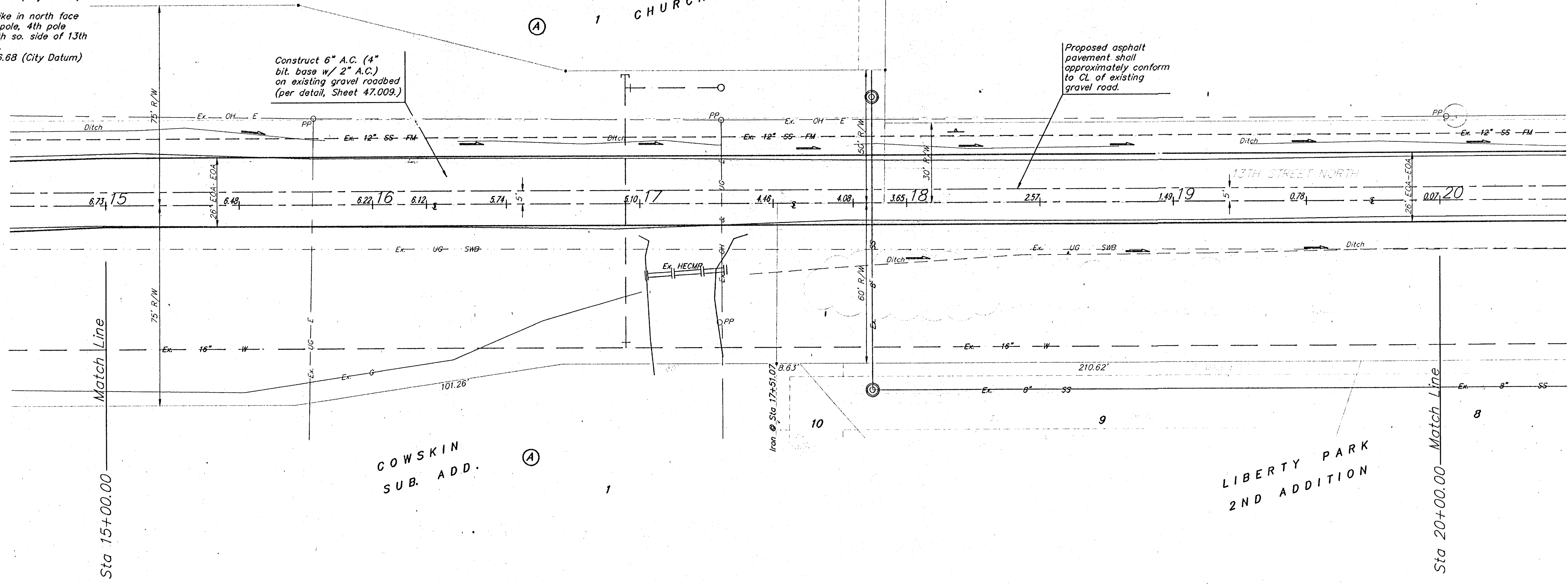
Small RR spike in north face of high line pole, 4th pole west of 135th so. side of 13th Street North.
 Elev. = 1366.68 (City Datum)

HERITAGE BAPTIST
 CHURCH ADDITION

Construct 6" A.C. (4" bit. base w/ 2" A.C.) on existing gravel roadbed (per detail, Sheet 47.009.)

Proposed asphalt pavement shall approximately conform to CL of existing gravel road.

Scale: 1" = 20'
 = Iron



PAVING FOR 13TH STREET NORTH
 STA. 15+00 TO STA. 20+00

ENGINEERING, SURVEYING, & PLANNING
 316-262-7271 • 315 ELLIS • WICHITA, KANSAS 67211

ENGINEER DRAWN APPROVED D.1799 SCALE