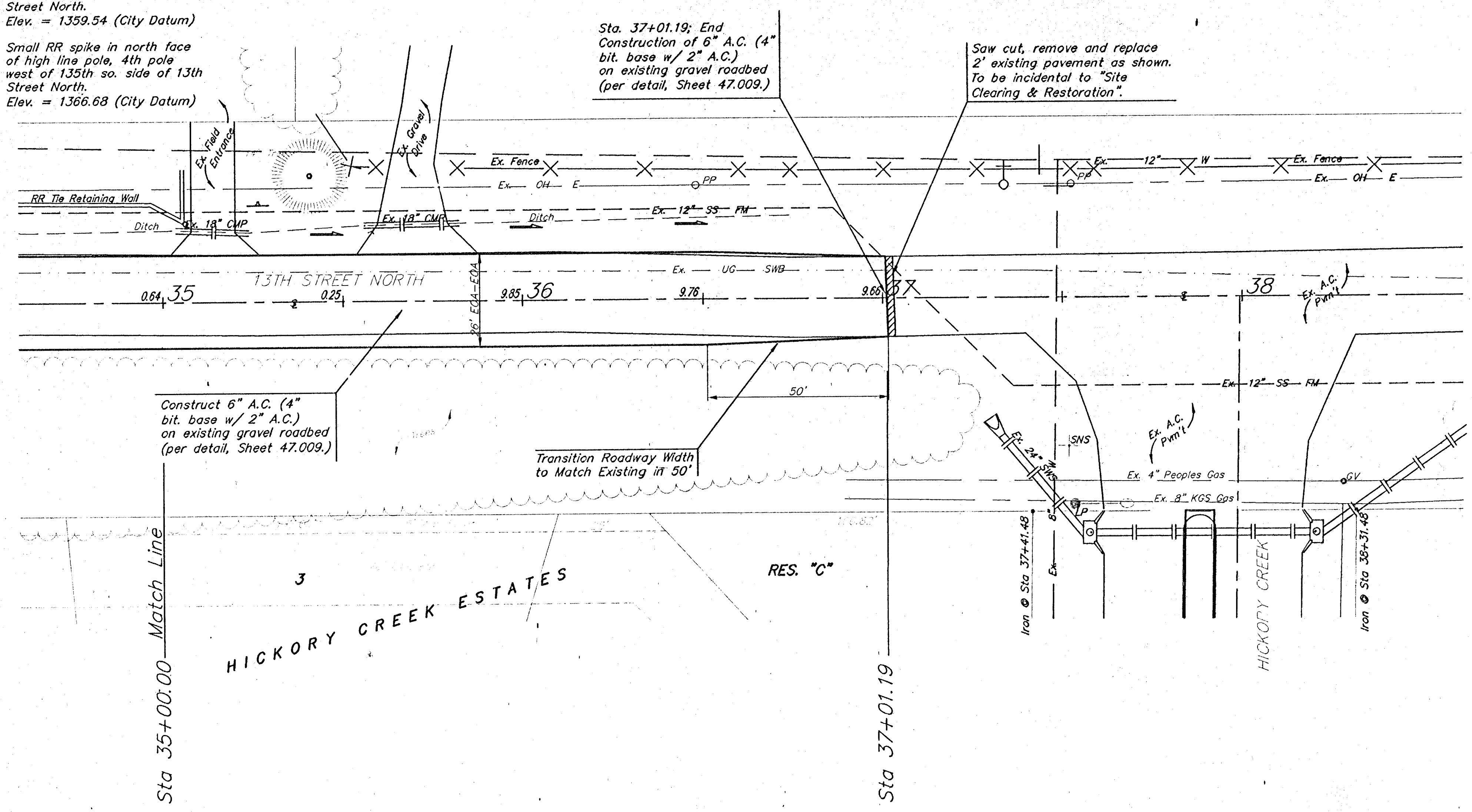


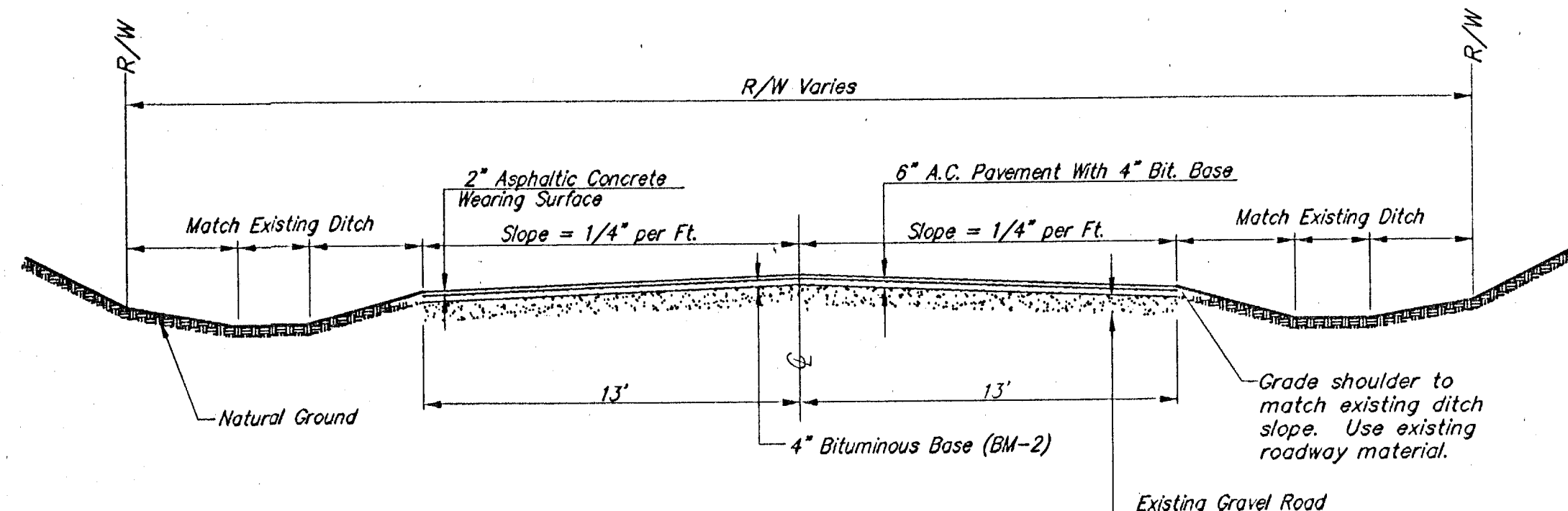
STATE	PROJECT NO.	YEAR	SHEET NO.	TOTAL SHEETS
KANSAS	87 N-0230-01	2003	60	73

BENCHMARKS:
 Small RR spike in north face of high line pole, 2nd pole west of 135th so. side of 13th Street North.
 Elev. = 1359.54 (City Datum)
 Small RR spike in north face of high line pole, 4th pole west of 135th so. side of 13th Street North.
 Elev. = 1366.68 (City Datum)

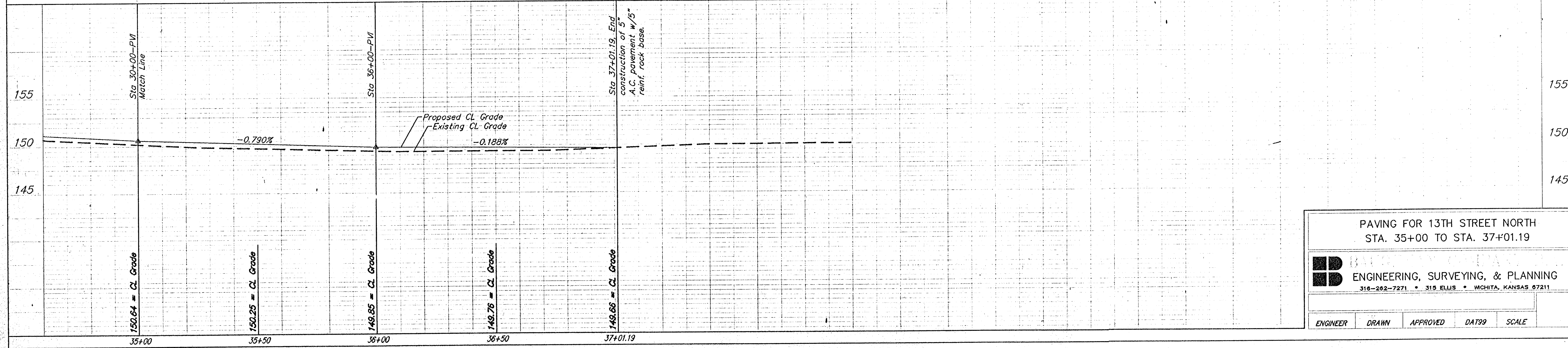


Scale: 1" = 20'
 • = Iron

NOTE: Compaction and necessary grading to shape roadway shall be considered Subsidiary to Bid Item 150 mm Asphaltic Concrete (PG-28) with 100 mm Bituminous Base.



Pavement Detail
 6" Asphalt Pavement on Compacted and Shaped Subgrade
 Sta. 14+01.44 to Sta. 37+01.19



PAVING FOR 13TH STREET NORTH
 STA. 35+00 TO STA. 37+01.19

B ENGINEERING, SURVEYING, & PLANNING
 316-282-7271 • 315 ELLIS • WICHITA, KANSAS 67211

ENGINEER	DRAWN	APPROVED	DAT39	SCALE
----------	-------	----------	-------	-------