

LIFT STATION REMOVAL AT KELLOGG AND 151ST STREET WEST SANITARY SEWER IMPROVEMENTS

IN CONJUNCTION WITH

U.S. 54 IMPROVEMENTS - KDOT PROJ. NO. 54-87 K-6657-03 (CITY OF WICHITA PROJ. NO. 472-84842)

CITY OF WICHITA PROJECT NO. 468-84860

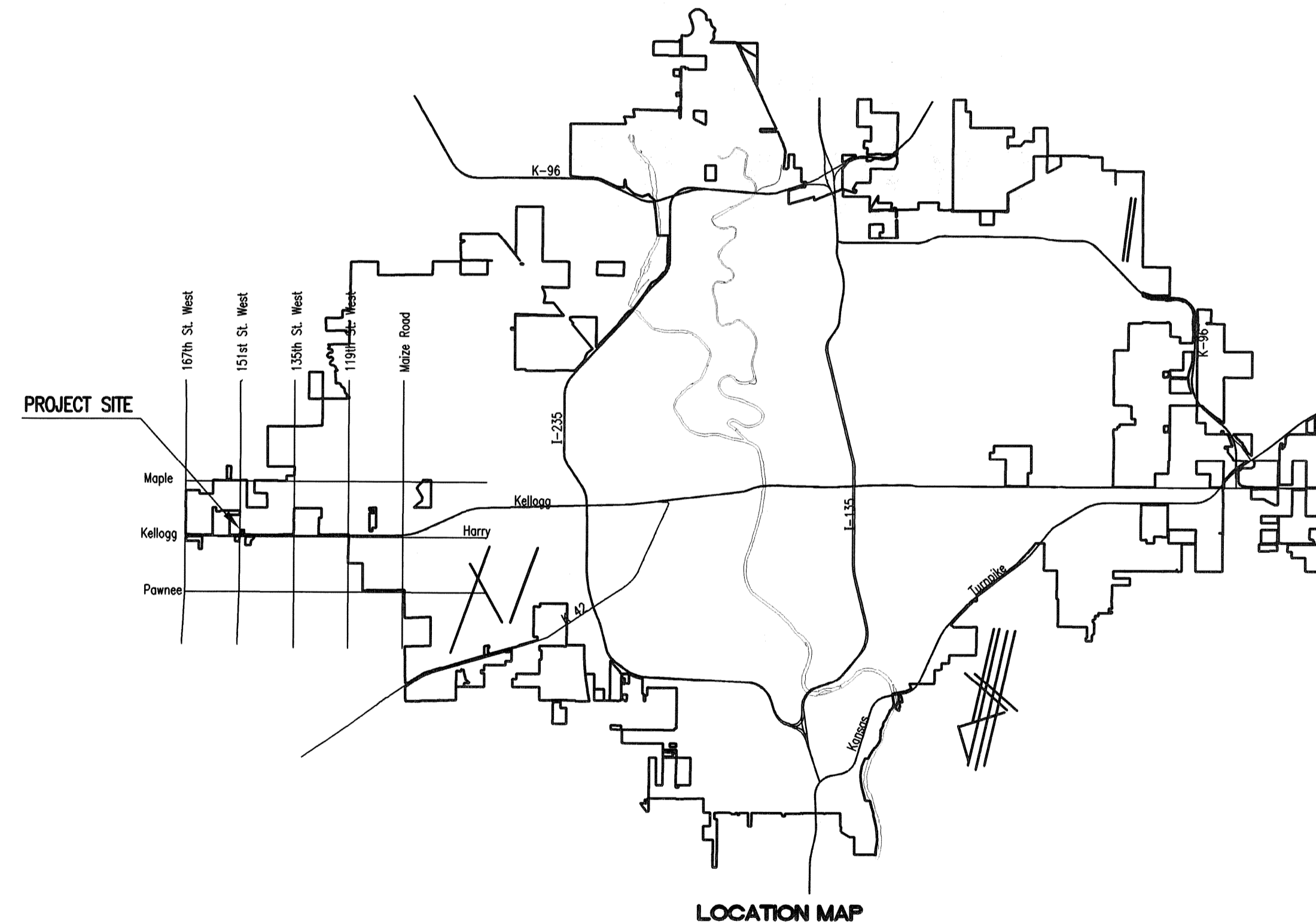
OCA NO. ~~652024~~ 624106

CITY OF WICHITA, KANSAS

GARY JANZEN, P.E. - CITY ENGINEER

12-29-16:
Inspector J. Koleczek retired and as-builts were never created. Upon request, this as-built was created by G. Baalman on 12-28-16.

Items in pink added by L Lawrenz 12-29-16



PART C - INDEX OF SHEETS

SHEET NO. C1	SANITARY SEWER TITLE SHEET
SHEET NO. C2	SANITARY SEWER KEY MAP AND GENERAL NOTES
SHEET NO. C3	LIFT STATION/FORCE MAIN ABANDONMENT PLAN
SHEET NO. C4-C5	SANITARY SEWER PLAN/PROFILE
SHEET NO. C6	FORCE MAIN PLAN/PROFILE
SHEET NO. C7	FORCE MAIN CONNECTION
SHEET NO. C8	PRECAST SANITARY SEWER MANHOLE
SHEET NO. C9	MANHOLE FRAME AND COVER
SHEET NO. C10-C11	SOIL EROSION BMP DETAILS

JULY 2014

PLANS PREPARED BY

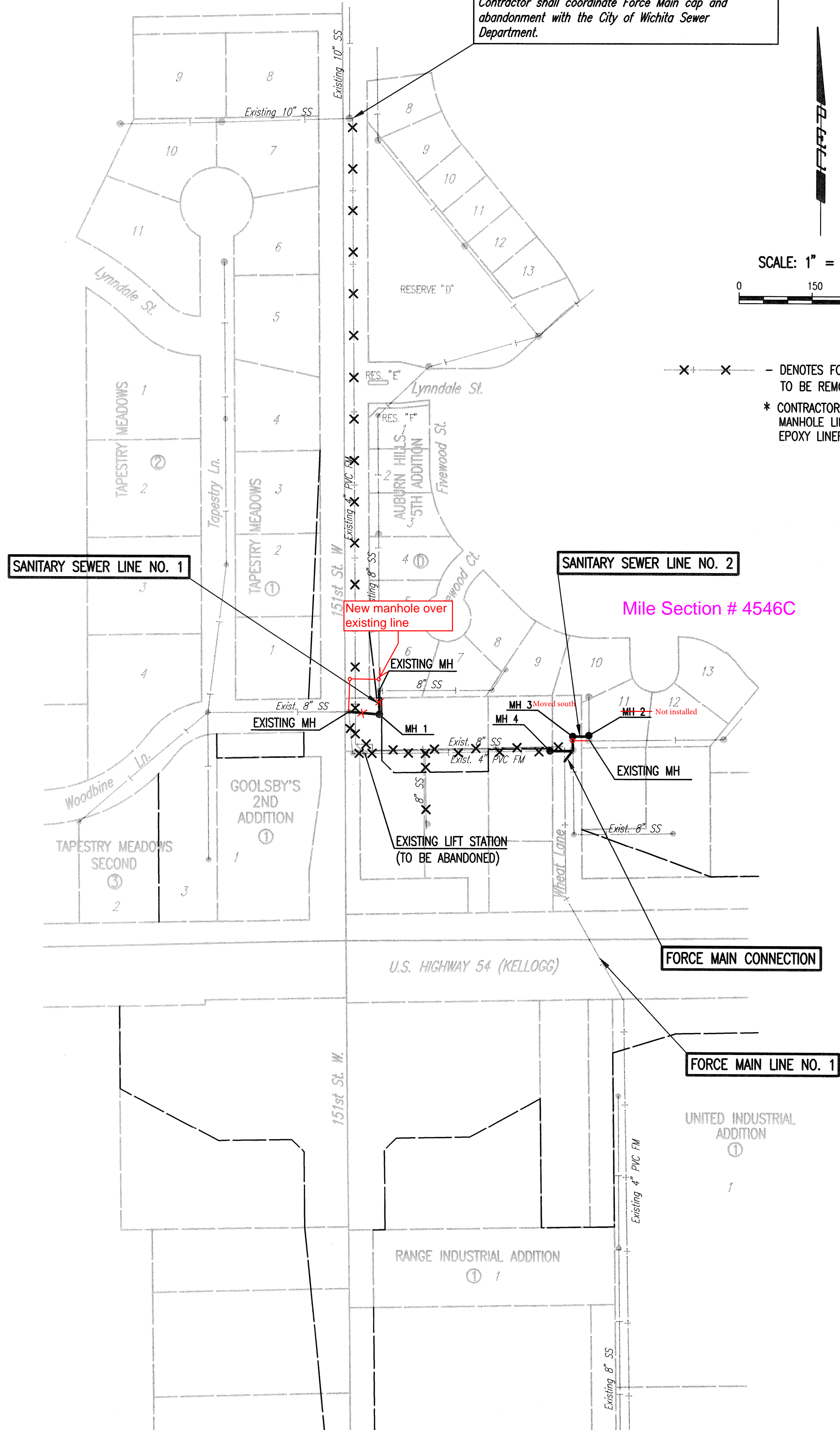
PROFESSIONAL ENGINEERING CONSULTANTS, P.A.

ENGINEERS

WICHITA, KANSAS



Cut and install CI MJ Cap on existing 4" Force Main 2' South of MH wall. Remove existing Force Main from manhole and grout opening water tight. * Abandon 4" PVC Force Main (S) in place. See sheet no. 3 for Lift Station Abandonment Plan. Contractor shall coordinate Force Main cap and abandonment with the City of Wichita Sewer Department.



SCALE: 1" = 150'

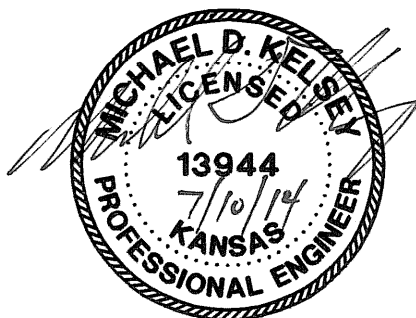
X X - DENOTES FORCE MAIN AND 8" SANITARY SEWER TO BE REMOVED/ABANDONED IN PLACE.
 * CONTRACTOR SHALL SEAL INTERIOR MANHOLE LINER WITH SEWER GUARD EPOXY LINER OR APPROVED EQUAL.

GENERAL NOTES

- ALL CONSTRUCTION AND MATERIALS TO COMPLY WITH CITY OF WICHITA SPECIFICATIONS AND STANDARDS.
- ALL ELEVATIONS SHOWN ARE NGVD 29 DATUM.
- THE CONTRACTOR SHALL LIMIT THE EXTENT OF TRENCH TO REMAIN OPEN OVERNIGHT AND WEEKENDS TO LESS THAN 50 FEET.
- CONTRACTOR WILL BE REQUIRED TO PROVIDE A MINIMUM ADVANCE NOTICE OF SEVENTY-TWO (72) HOURS TO UTILITY COMPANIES PRIOR TO STARTING ANY EXCAVATION AS FOLLOWS:
 KANSAS ONE-CALL 687-2470 OR 811
 CITY OF GODDARD 794-8992
 MR. RANDY BROOKS
 THE CONTRACTOR MUST NOTIFY THE FOLLOWING IN CASE OF AN EMERGENCY:
 EMERGENCY DISPATCH 911
 COX COMMUNICATIONS 800-778-9140
 KANSAS GAS SERVICE 888-482-4950
 WESTAR ENERGY 800-383-1183
 BLACK HILLS ENERGY 800-694-8989
 CITY OF WICHITA WATER DEPARTMENT 262-6000
 CITY OF WICHITA SEWER MAINTENANCE 262-6000
- UNDERGROUND UTILITY SERVICE LINES AND OVERHEAD UTILITY POLE LINES ARE TO BE ADJUSTED AS NECESSARY BY OTHERS PRIOR TO CONSTRUCTION UNLESS THE PLANS SPECIFICALLY CALL FOR THEIR ADJUSTMENT BY THE CONTRACTOR OR UNLESS THE PLANS SPECIFICALLY IDENTIFY A UTILITY TO BE ADJUSTED BY ITS OWNER DURING CONSTRUCTION. EXISTING UTILITIES AND THEIR LOCATIONS, AS SHOWN ON THE PLANS, REPRESENT THE BEST INFORMATION OBTAINABLE FOR THE DESIGN. THE CONTRACTOR WILL BE REQUIRED TO WORK AROUND EXISTING UTILITIES WITHIN THE RIGHT-OF-WAY WHICH DO NOT CONFLICT WITH PROPOSED CONSTRUCTION.
- THE CONTRACTOR SHALL BE RESPONSIBLE FOR PRESERVING PROPERTY IRONS. THE CONTRACTOR WILL BE REQUIRED TO RE-ESTABLISH ANY PROPERTY IRONS WHICH ARE DAMAGED OR DESTROYED BY HIS CONSTRUCTION OPERATIONS. SUCH IRONS SHALL BE RE-ESTABLISHED BY A LICENSED LAND SURVEYOR IN ACCORDANCE WITH STATE LAWS. ALL COSTS FOR THIS WORK SHALL BE SUBSIDIARY TO THE LUMP SUM PRICE BID FOR "SITE RESTORATION".
- CONTRACTOR SHALL PROVIDE POSITIVE DRAINAGE AWAY FROM ALL MANHOLE COVERS.
- MANHOLES SHALL BE TYPE "P" MANHOLES. MANHOLES SHALL BE CONSTRUCTED IN ACCORDANCE WITH THE CITY OF WICHITA SPECIFICATIONS AND STANDARDS AND THE STANDARD DETAIL DRAWINGS.
- RUBBLE FROM THE REMOVAL OF MISCELLANEOUS STRUCTURES INCLUDING ANY TREES REMOVED, TREE TRIMMINGS, AND EXCESS EXCAVATION WHICH IS TO BE WASTED SHALL BE DISPOSED OF ON SITES PROVIDED BY THE CONTRACTOR. THESE SITES SHALL ALSO BE APPROVED BY THE ENGINEER AS TO SUITABILITY, APPEARANCE, AND SITE LOCATION. LOCATIONS THAT, IN THE OPINION OF THE ENGINEER, WILL LEAVE AN UNSIGHTLY APPEARANCE WILL NOT BE APPROVED. ALL DISPOSAL SITES MUST BE APPROVED BY THE KANSAS DEPARTMENT OF HEALTH AND ENVIRONMENT. MATERIAL EITHER STOCKPILED OR DISPOSED OF IN A FLOOD PLAIN WILL REQUIRE A KANSAS STATE BOARD OF AGRICULTURE PERMIT. ANY MATERIAL DUMPED IN WATERS OF THE UNITED STATES OR WETLANDS IS SUBJECT TO U.S. CORPS OF ENGINEERS PERMITTING REGULATIONS. ANY MATERIAL BURIED OR STOCKPILED BEYOND APPROVED CONSTRUCTION LIMITS MAY REQUIRE ARCHAEOLOGICAL INVESTIGATIONS UNLESS BURIED IN A PREVIOUSLY APPROVED DISPOSAL LOCATION.
- ALL LAWN/TURF AREAS DISTURBED BY CONSTRUCTION OF THE PROPOSED IMPROVEMENTS SHALL BE RESTORED WITH THE SAME GRASS/SOD AS EXISTING. RESTORATION OF DISTURBED AREAS SHALL INCLUDE, BUT NOT BE LIMITED TO, TOP SOIL PREPARATION, SEEDING, MULCH, AND/OR RESEEDING. ALL SEEDING/SODDING WORK SHALL BE IN ACCORDANCE WITH THE CITY OF WICHITA STANDARD SPECIFICATIONS AND THE CITY OF WICHITA ADMINISTRATIVE REGULATION NO. AR6.5 WHICH GOVERNS CLEANUP AND RESTORATION OR REPLACEMENT FOLLOWING CONSTRUCTION. ALL COSTS FOR THIS WORK SHALL BE SUBSIDIARY TO THE LUMP SUM PRICE BID FOR "SITE RESTORATION".
- THE CONTRACTOR SHALL SEED ALL AREAS DISTURBED BY CONSTRUCTION ACTIVITIES WITH TEMPORARY RYE GRASS. RYE GRASS SEED SHALL BE PLANTED AT A MINIMUM RATE OF SIX (6) POUNDS PER ONE THOUSAND (1,000) SQUARE FEET. THIS TEMPORARY SEEDING MAY BE OMITTED ONLY IF OTHER SEEDING IS REQUIRED IN ACCORDANCE WITH GENERAL NOTE NO. 11 ABOVE. TEMPORARY SEEDING OR PERMANENT SEEDING/SODDING SHALL BE APPLIED WITHIN 14 DAYS AFTER THE AREA HAS BEEN DISTURBED.

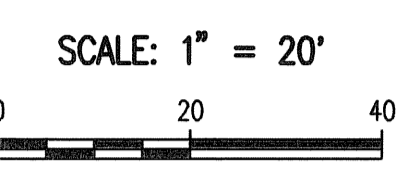
- THE CONTRACTOR SHALL AVOID REMOVAL OR TRIMMING OF ANY TREES OR SHRUBS WHERE POSSIBLE. WHERE THE CONTRACTOR BELIEVES THE REMOVAL OR TRIMMING IS UNAVOIDABLE, HE SHALL COORDINATE SUCH WORK WITH THE ENGINEER. COSTS FOR TREE/SHRUB REMOVAL AND TRIMMING REGARDLESS OF SIZE SHALL BE CONSIDERED SUBSIDIARY TO THE LUMP SUM PRICE BID FOR "SITE CLEARING".
- THE CONTRACTOR SHALL PREVENT ANY CONSTRUCTION DEBRIS FROM ENTERING THE EXISTING SANITARY SEWER DURING CONSTRUCTION.
- THE CONTRACTOR SHALL GIVE ALL PROPERTY OWNERS AND/OR TENANTS OF DEVELOPED PROPERTY ABUTTING THE CONSTRUCTION OF THIS PROJECT A MINIMUM OF TEN (10) DAYS ADVANCE NOTICE PRIOR TO START OF CONSTRUCTION.
- THE CONTRACTOR SHALL BE RESPONSIBLE FOR MAINTAINING CONTINUOUS FLOW OF SEWAGE THROUGH CONSTRUCTION. CONTRACTOR'S PROPOSED METHOD FOR MAINTAINING SEWAGE FLOW SHALL BE APPROVED BY THE ENGINEER. COST OF MAINTAINING FLOW OF SEWAGE THROUGH CONSTRUCTION WILL NOT BE PAID FOR DIRECTLY AND THIS COST SHALL BE CONSIDERED AS SUBSIDIARY TO THE OTHER RELATED ITEMS OF WORK.
- THE CONTRACTOR SHALL NOT BURY MANHOLES THAT HAVE RIM ELEVATIONS WHICH ARE LOWER THAN EXISTING GROUND AT THE MANHOLE. THE GROUND AROUND SUCH MANHOLES AND ALONG THE SEWER ALIGNMENT SHALL BE BACKFILLED TO THE APPROXIMATE ELEVATION OF THE PROPOSED GROUND ELEVATION SHOWN ON THE PLAN/PROFILE SHEETS. THE CONTRACTOR SHALL PROVIDE DRAINAGE AWAY FROM THESE MANHOLES AND SEWER LINES BY CONSTRUCTION OF TEMPORARY DITCHES OR SLOPING THE GROUND AS REQUIRED. ALL COSTS FOR THIS WORK SHALL BE CONSIDERED SUBSIDIARY TO THE INSTALLED BID PRICE FOR MANHOLES OR PIPE.
- THE CONTRACTOR SHALL PROVIDE MOUNDING EARTH AT MANHOLES AND CLEANOUTS THAT HAVE TOP ELEVATIONS GREATER THAN 1 FOOT ABOVE EXISTING GRADE, AS SHOWN ON THE PLANS. COSTS FOR MOUNDING SHALL BE CONSIDERED SUBSIDIARY TO THE PRICE BID PER EACH FOR MANHOLES.
- INTERURBAN TRAFFIC GENERATED OUTSIDE THE PROJECT AREA AND LOCAL BUSINESS OR RESIDENTIAL TRAFFIC GENERATED WITHIN THE PROJECT AREA ARE TO BE CARRIED THROUGH CONSTRUCTION AS FURTHER PROMULGATED BY PROJECT SPECIAL PROVISIONS. THE CONTRACTOR SHALL UTILIZE BARRICADES, SIGNS, GUARDS, AND FLAGMEN IN ACCORDANCE WITH THE MANUAL ON UNIFORM TRAFFIC CONTROL DEVICES.
- WHERE INDICATED IN THE PLANS, THE SANITARY SEWER EXCAVATION SHALL BE SAND FILLED AND FLUSHED (JETTED AND VIBRATED) WITH WATER PER THE REQUIREMENTS LISTED IN THE STANDARD SPECIFICATIONS FOR THE CITY OF WICHITA, UNLESS FLOWABLE FILL OR OTHER IMPROVED BACKFILL MATERIAL IS OTHERWISE SPECIFIED. ALL COSTS FOR SAND FILLING AND FLUSHING SHALL BE INCLUDED IN THE UNIT PRICE BID FOR "JETTED SAND BACKFILL".
- THE CONTRACTOR SHALL INSTALL AND/OR MAINTAIN EROSION CONTROL METHODS AS SPECIFIED ON SHEETS 10-11. THE FOLLOWING QUANTITIES ARE ESTIMATED, AND SHOULD BE CONSIDERED THE MINIMUM EFFORT REQUIRED. THE GENERAL LOCATION OF THE REQUIRED EROSION CONTROL IS ILLUSTRATED ON THE PLAN SHEETS. THE SANITARY SEWER CONTRACTOR SHALL BE RESPONSIBLE FOR MAINTAINING THE EROSION CONTROL SHOWN THROUGH THE COMPLETION OF THIS PROJECT. INSTALLATION OF THESE BMP'S DOES NOT RELIEVE THE CONTRACTOR OF THE RESPONSIBILITY OF ABATING SOIL EROSION.
 SILT FENCE BARRIER 170 L.F.
 DITCH CHECK 1 EA.
 CONSTRUCTION ENTRANCE 1 EA.
- CONTRACTOR SHALL THOROUGHLY PIG AND FLUSH EXISTING FORCE MAINS TO BE ABANDONED IN PLACE PRIOR TO CUTTING AND INSTALLING CI MJ CAPS.

HORIZONTAL AND VERTICAL CONTROL SEE ROAD PLANS, SHEETS NO. 20- NO. 25.



No.	Revision	By	Date
CITY OF WICHITA LIFT STATION REMOVAL AT KELLOGG AND 151ST STREET WEST SANITARY SEWER IMPROVEMENTS SS KEY MAP AND GENERAL NOTES GARY JANZEN, P.E. - CITY ENGINEER CITY OF WICHITA PROJECT NO. 468-84860 PROJECT NO. 54-87 K-6657-03 SEDGWICK CO.			
		PROFESSIONAL ENGINEERING CONSULTANTS, P.A. 303 SOUTH TOPEKA WICHITA, KS 67202 316-262-2691 www.pec1.com	
Designed by	MDK, SAD	Job No.	08313-002-0042
Drawn by	CSL, JAN	Date	MARCH 2009
			Sht. C2 of C11

Saved 07-10-2014 2:29:22 PM by CSL
 Plot Scale: 1:150 07-10-2014 2:29:44 PM by CATHY LINK
 C:\2008\08313\002\08313-002-002-55key.dwg



Cut and Cap existing 4" force main. *
Remove Valves and Salvage to City.
Abandon in place existing 4" PVC Force
Main. See sheet no. C2 for continuation.

N: 1,677,648.6408, E: 1,597,137.5642
(C.O.W. SS MH# 4546-059)
Remove existing Precast Conc. MH in its
entirety. Fill any excavated area's with AB-3
compacted to 95% ASTM or Flowable Fill D698.
Abandon in place:
85.4 L.F. 8" PVC pipe (N)
30.3 L.F. 8" PVC pipe (E)
Install 8" Plug (N&E).

SANITARY SEWER LINE NO. 1
See sheet no. C4
**This was changed. See
revised layout. - LML**

N: 1,677,649.8271, E: 1,597,293.3293
(C.O.W. SS MH# 4546-051)
Remove existing Precast Conc. MH in its entirety. Fill any
excavated areas with AB-3 compacted to 95% ASTM
D698 or Flowable Fill.
Abandon in place:
117.9 L.F. 8" PVC Pipe (S)
125.5 L.F. 8" PVC Pipe (W)
253.5 L.F. 8" PVC Pipe (E)
Install 8" Plug (N,E&S).

Remove 48.9 L.F. 8" PVC Pipe (W) *
Install 8" Plug (W)

SANITARY SEWER LINE NO. 2
See sheet no. C5

**This was changed. See
revised layout. - LML**

DEMOLITION NOTES

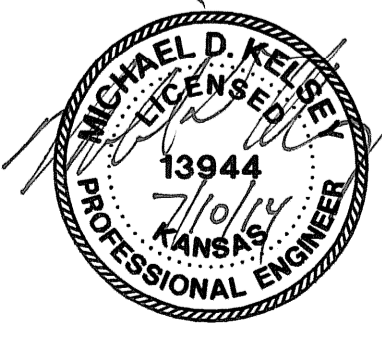
- PRIOR TO BEGINNING ANY SALVAGE/DEMOLITION WORK, THE CONTRACTOR SHALL CONTACT THE UTILITY COMPANIES (WESTAR ENERGY, ETC.) AND REQUEST THAT ALL UTILITY SERVICE BE DISCONNECTED. ANY COSTS INCURRED BY THE UTILITY COMPANIES SHALL BE PAID BY THE CONTRACTOR.
- LIFT STATION CONCRETE PAD SHALL BE REMOVED BY THE CONTRACTOR.
- REMOVED ITEMS SHALL BE CLEANED AND STOCKPILED ON SITE FOR THE ENGINEERS INSPECTION. ACCEPTABLE ITEMS SHALL BE DELIVERED BY THE CONTRACTOR TO A LOCATION APPROVED BY MICHAEL TULLIS AT (316) 303-8713.
- CONCRETE RUBBLE, OTHER DEBRIS, AND UNSALVAGEABLE MATERIALS SHALL BE DISPOSED AS APPROVED AND DIRECTED BY THE CITY ENGINEER.
- STRUCTURES TO BE ABANDONED SHALL BE COMPLETELY REMOVED TO AN ELEVATION OF 3' BELOW FINISHED GRADE. THE BOTTOM OF THE STRUCTURE SHALL BE BROKEN TO ALLOW FOR DRAINAGE, AND THE REMAINING PORTION OF THE ABANDONED STRUCTURES SHALL BE BACKFILLED WITH SAND OR FLOWABLE FILL TO AN ELEVATION OF 2' BELOW GRADE. THE TOP 2' OF THE EXCAVATION SHALL BE BACKFILLED WITH COMPACTED MATERIAL SIMILAR TO THE ADJACENT SURFACE TO 95% OF ASTM D698.
- AFTER BACKFILLING, THE ENTIRE SITE DISTURBED BY DEMOLITION SHALL BE CLEARED OF ALL DEBRIS, CONCRETE RUBBLE, ETC., GRADED TO DRAIN, AND RESEDED.
- ALL WORK DESCRIBED ABOVE AND ANY INCIDENTAL WORK NECESSARY SHALL BE CONSIDERED SUBSIDIARY TO THE LUMP SUM PRICE BID FOR "LIFT STATION #52 ABANDONMENT".
- PRIOR TO ABANDONING EXISTING FORCE MAINS, CONTRACTOR SHALL PIG AND FLUSH WITH CLEAN WATER. ONCE THE FORCE MAIN IS PIGGED AND FLUSHED, BOTH ENDS SHALL BE CUT AND CAPPED WITH CI MJ CAPS.
- THE CONTRACTOR SHALL COORDINATE WITH MICHAEL TULLIS AT (316) 303-8713 CONCERNING ITEMS TO BE SALVAGED. ANY ITEMS TO BE SALVAGED SHALL BE CLEARED AND DELIVERED TO THE CITY. ITEMS TO BE DISPOSED OF AS DIRECTED BY THE CITY SHALL BE DISPOSED OF IN AN ACCEPTABLE LOCATION.
- ALL ABANDONMENT AND REMOVAL OF EXISTING STRUCTURES, MATERIAL AND PIPING SHALL BE INCLUDED IN THE LUMP SUM PRICE BID FOR "LIFT STATION #52 ABANDONMENT". ALSO INCLUDED IN THE LUMP SUM PRICE BID FOR THIS ITEM SHALL BE MAINTAINING WASTEWATER FLOWS.
- PRIOR TO ANY LIFT STATION OR FORCE MAIN ABANDONMENT OR REMOVAL THE CONTRACTOR SHALL GIVE 48 HOURS (MIN.) NOTICE TO THE CITY. CONTACT SHAWN MELLIES AT (316) 268-4632.
- CONTRACTOR SHALL NOT DIVERT ANY SEWAGE FLOW THROUGH NEW PIPE OR MANHOLES UNTIL TESTING HAS BEEN COMPLETED AND ACCEPTED.
- CONTRACTOR SHALL VISIT THE LIFT STATION SITE AND BECOME FAMILIAR WITH THE EXISTING LIFT STATION AND EQUIPMENT AND SUBSEQUENT DEMOLITION PRIOR TO BIDDING.
- CONTRACTOR SHALL COORDINATE TRANSFORMER, UTILITY POLE REMOVAL WITH THE PROPER UTILITY.

WESTAR ENERGY: AT&T:
ZACHARY LAWS JASON EDWARDS
(316) 261-6264 (316) 268-2008

N: 1,677,531.9236, E: 1,597,292.6810
(C.O.W. SS MH# 4546-055)
Remove existing MH in its entirety.
Fill any excavated areas with AB-3 compacted to
95% ASTM D698 or Flowable Fill.
Install 8" Plug (N).

* Existing 4" Force Main to be Abandoned in place shall
be sandfilled, remove where conflict with proposed
improvements.

- C = CAPS OR MASONRY PLUGS TO BE INSTALLED.
- SS = SANITARY SEWER MANHOLE TO BE REMOVED.
- X-X- = SANITARY SEWER TO BE REMOVED/ABANDONED IN PLACE.
- X+X- = FORCE MAIN TO BE REMOVED/ABANDONED IN PLACE.



No.	Revision	By	Date

CITY OF WICHITA
LIFT STATION REMOVAL AT KELLOGG AND 151ST STREET WEST
SANITARY SEWER IMPROVEMENTS
LIFT STATION/FORCE MAIN ABANDONMENT PLAN
GARY JANZEN, P.E. - CITY ENGINEER
CITY OF WICHITA PROJECT NO. 468-84860
PROJECT NO. 54-87 K-6657-03 SEDGWICK CO.

DESIGNED BY MDK, SAD
DRAWN BY CSL, JAN
DATE MARCH 2009

PROFESSIONAL ENGINEERING CONSULTANTS, P.A.
303 SOUTH TOPEKA WICHITA, KS 67202
316-262-2691 www.pec1.com

Sht. C3 of C11

Saved 07-10-2014 2:31:36 PM by CSL
 03-10-2009 08:31:31 002108313-002-003-LS Abandonment

c:\2008\08313\002\2014-11-10 SS Alignment Change\08313-002-C04-SSLine1R

N: 1,677,809.4870, E: 1,597,135.1428
 Sta. ~~0+75.5~~ Sta 0+63
 Const. MH 1 **4546-404**
 Standard MH
 Top = 1393.27
 FL in = 1381.22 south
 FL out = 1381.00 east

CAUTION !!!
 Existing 4" Force Main
 Overhead Electric
 Overhead Cable TV

CAUTION !!!
 Existing 20"
 Waterline *

* Construct 20 L.F. 6"
 reinf. conc. encasement
 on 8" Sanitary Sewer

CAUTION !!!
 Buried Telephone (AT&T)
 Buried Electric (Cox)
 Existing 24" RCP

N: 1,677,809.9599, E: 1,597,198.1660
 Sta. ~~1+38.5~~ Sta 0+00
 Const. MH 2 **4546-403**
 Standard MH
 Top = 1391.11
 FL in = 1379.91 south FL out = 1379.91 north
 FL in = 1379.99 west

Install 63.0 L.F.
 8" Pipe **1.603%** slope

* PRIOR TO BEGINNING CONSTRUCTION, THE CONTRACTOR SHALL EXCAVATE THE EXISTING 20" WATERLINE TO VERIFY ITS HORIZONTAL AND VERTICAL LOCATION. THE PIPE LOCATION SHALL BE REPORTED TO THE ENGINEER SO THAT ANY NECESSARY PLAN MODIFICATIONS CAN BE MADE. ANY ADDITIONAL LABOR OR MATERIALS NECESSARY TO COMPLETE THE CONNECTION SHALL BE CONSIDERED SUBSIDIARY TO THE PROJECT.

CAUTION !!!
 Existing 8" Waterline

CAUTION !!!
 Existing 24" RCP
 $\bar{E}=1389.22$ (W), $\bar{E}=1389.33$ (E)

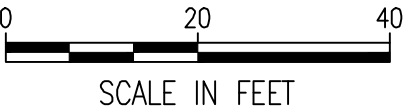
CAUTION !!!
 Buried Telephone (AT&T)

Install 75.5 L.F.
 8" Pipe **1.497%** slope

N: 1,677,733.9555, E: 1,597,135.7095
 Sta. ~~0+00.0~~ Sta 1+38.5
 Existing MH
 ~~\bar{E} Out = 1382.51 (N)~~

AUBURN HILLS 5TH
 ADDITION
 6

Freddie N. Boohar Revocable Trust
 D-1005-UP



4546-058

SSM# 4546-058,
 Precast Conc. MH
 Top = 1393.82
 FL out = 1382.35 south-north
 FL in = 1382.63 west

SSM# 4546-134,
 Precast Conc. MH
 Top = 1389.82
 $\bar{E}=1380.03$ 8" PVC (N)
 $\bar{E}=1380.07$ 8" PVC (E)

4546-134



303 SOUTH TOPEKA
 WICHITA, KS 67202
 316-262-2691
 www.pec1.com

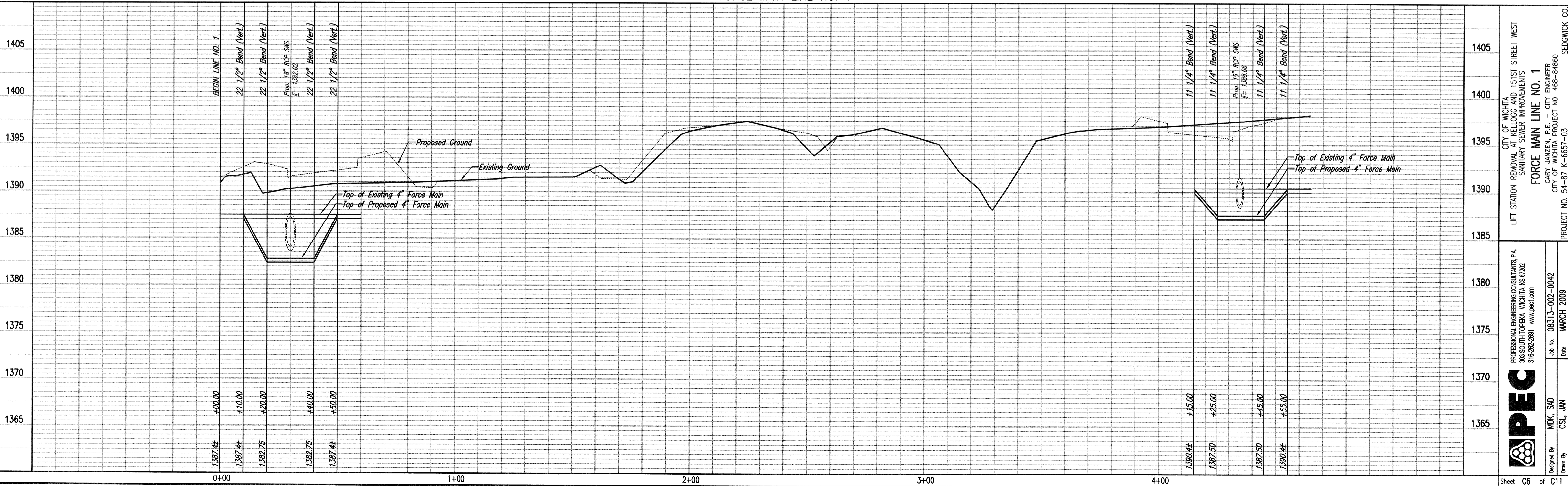
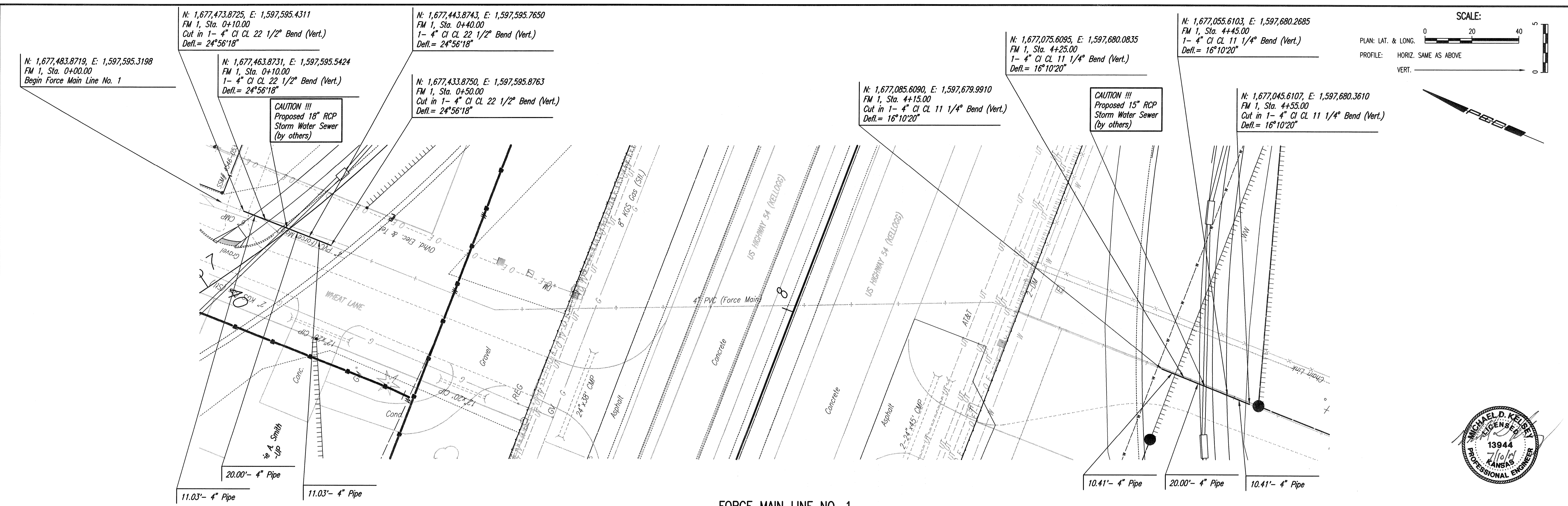
JOB NUMBER:	35-08313-002
DATE:	NOVEMBER 2014
SCALE:	1" = 20'
DRAWN BY:	CSL
CHECKED BY:	SAD
SHEET NUMBER:	01

**LINE 1
 REVISED**

PLAN	CHECKED	CHECKED
BY		
DATE		

PROFILE	CHECKED	CHECKED
BY		
DATE		

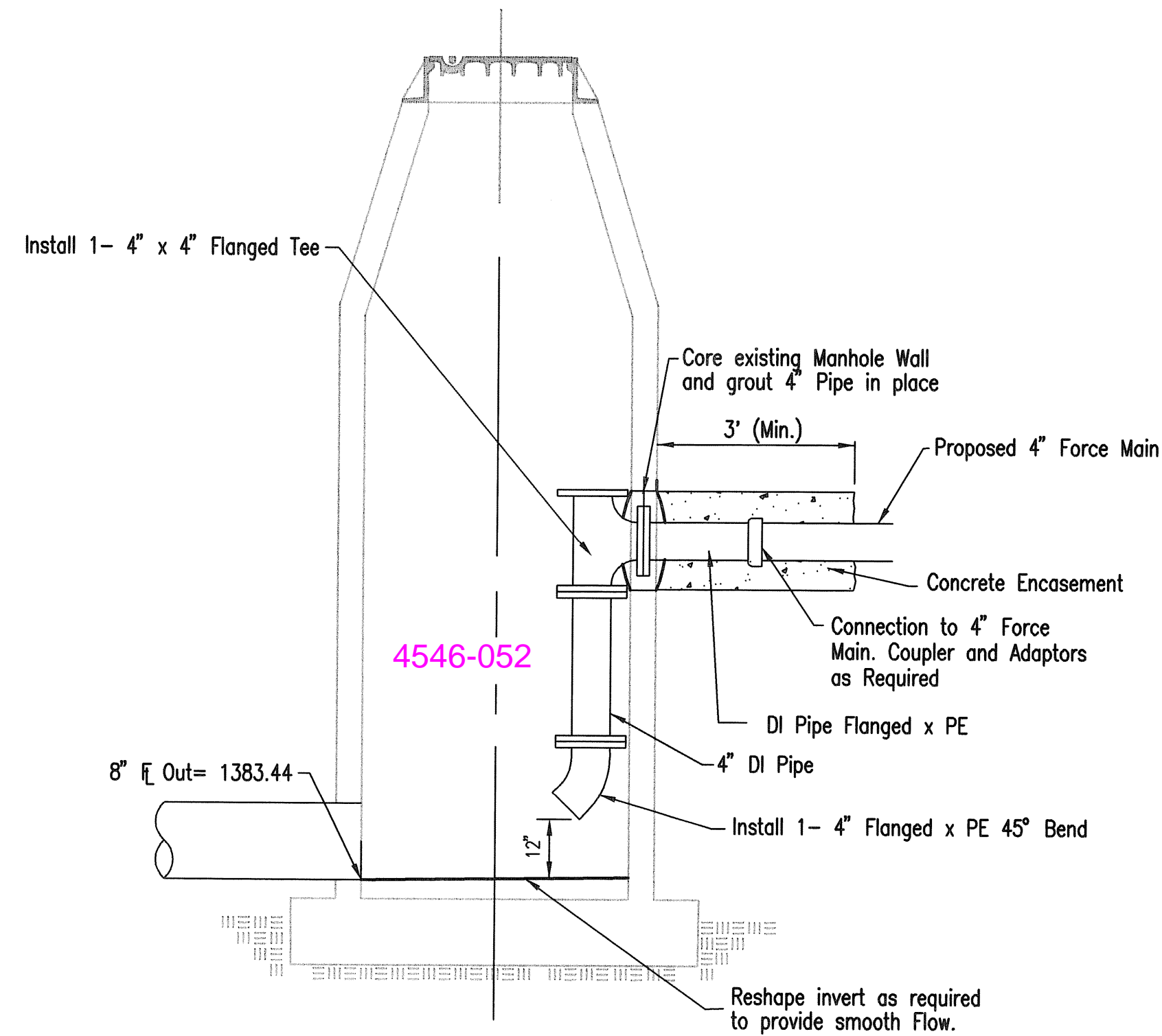
Saved 07-10-2014 3:02:06 PM by CSL
 File: 08313-002-0042.dwg
 Plot Date: 07-10-2014 3:03:13 PM by CSL
 Plot Scale: 1"=20'-0" (08313-002-0042.dwg)



MPEC
 PROFESSIONAL ENGINEERING CONSULTANTS, P.A.
 303 SOUTH TOPEKA WICHITA, KS 67202
 316-262-2881 www.pec1.com

City of Wichita
 LIFT STATION REMOVAL AT KELLOGG AND 151ST STREET WEST
 SANITARY SEWER IMPROVEMENTS
FORCE MAIN LINE NO. 1
 GARY JANZEN, P.E. - CITY ENGINEER
 CITY OF WICHITA PROJECT NO. 468-84860
 PROJECT NO. 54-87 K-6657-03 SEDGWICK CO.

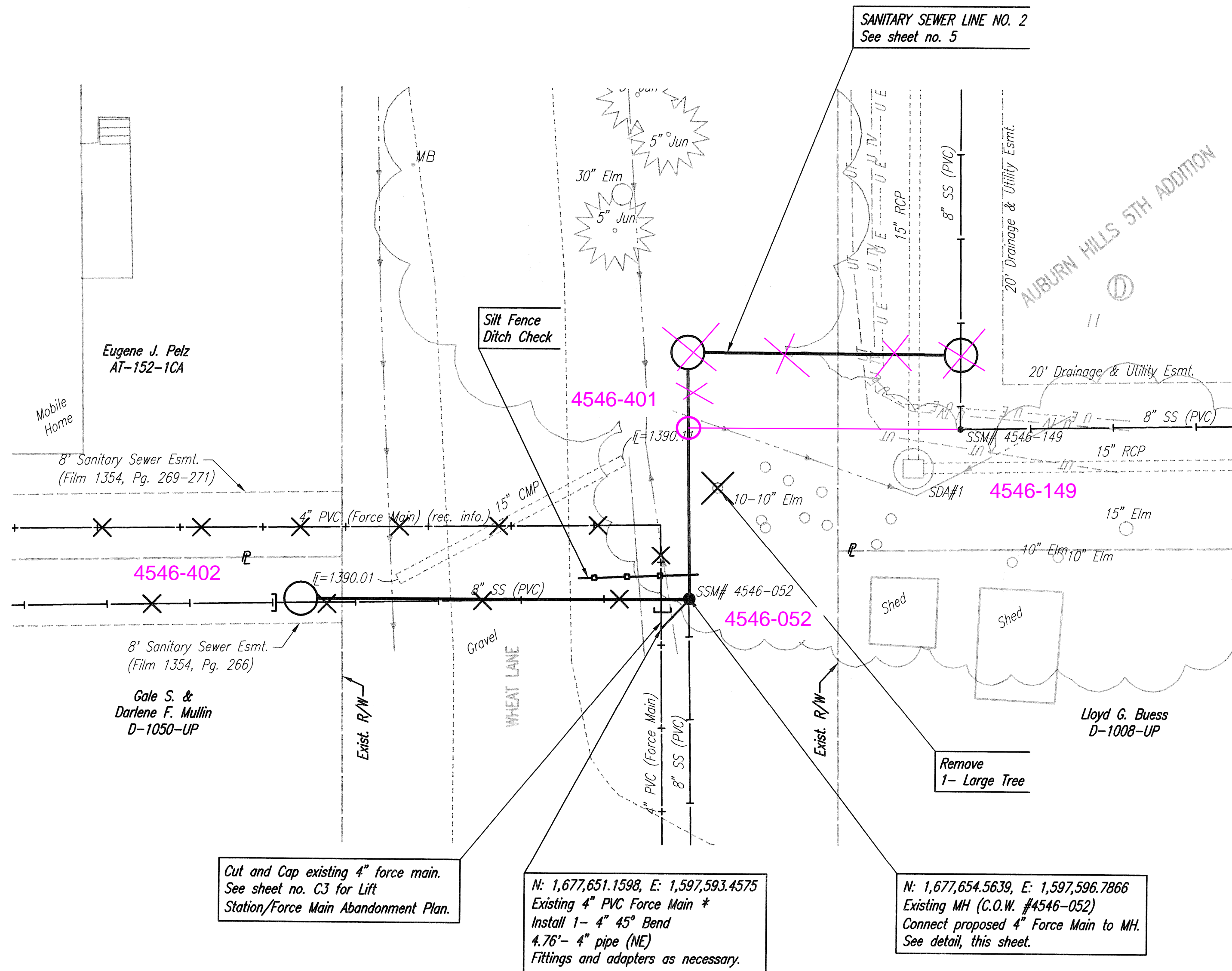
Designed by: MDK, SJD
 Drawn by: CSL, JAN
 Job No.: 08313-002-0042
 Date: MARCH 2009



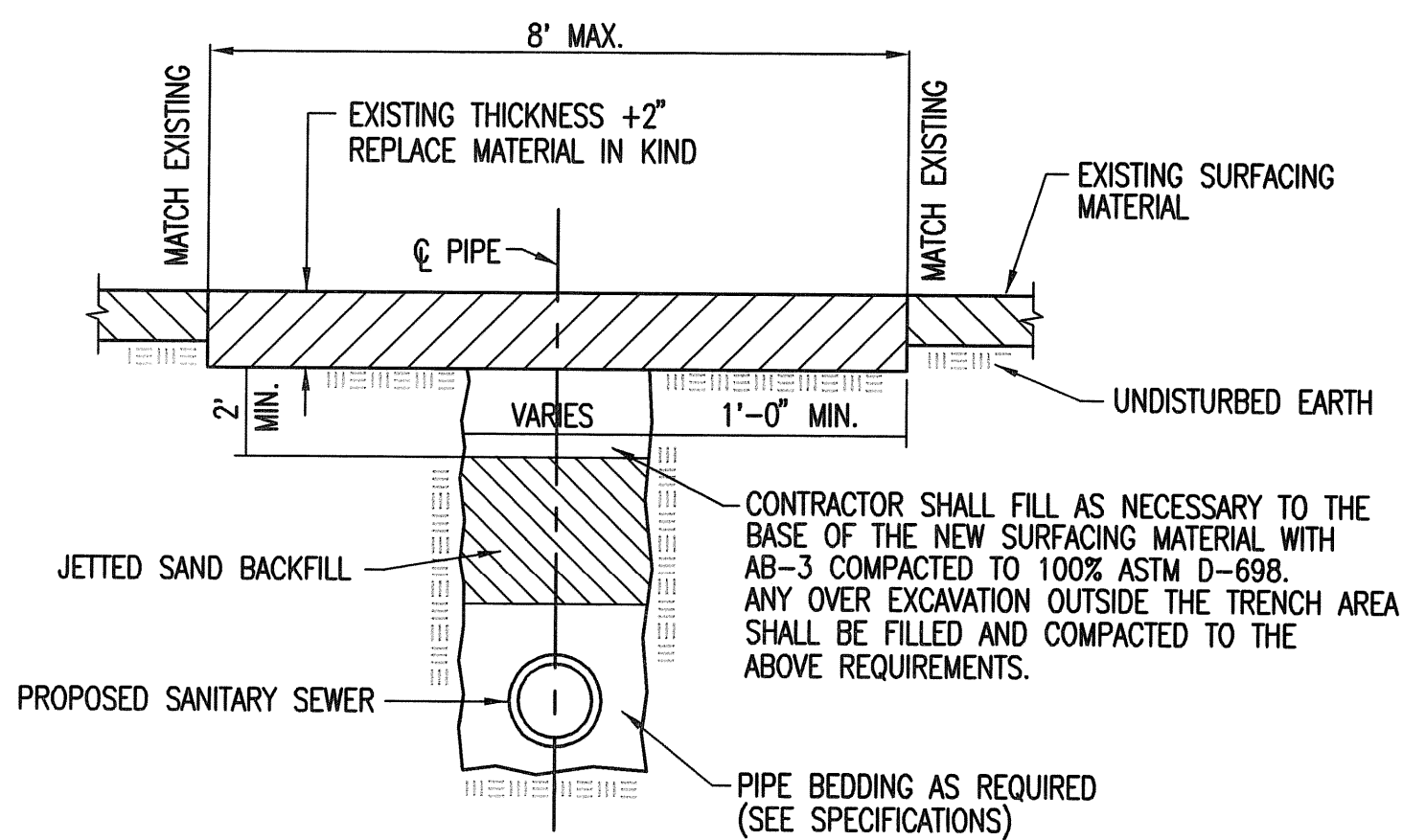
FORCE MAIN CONNECTION DETAIL

EXISTING MH #4546-052
SS LINE NO. 2, STA. 0+72.1

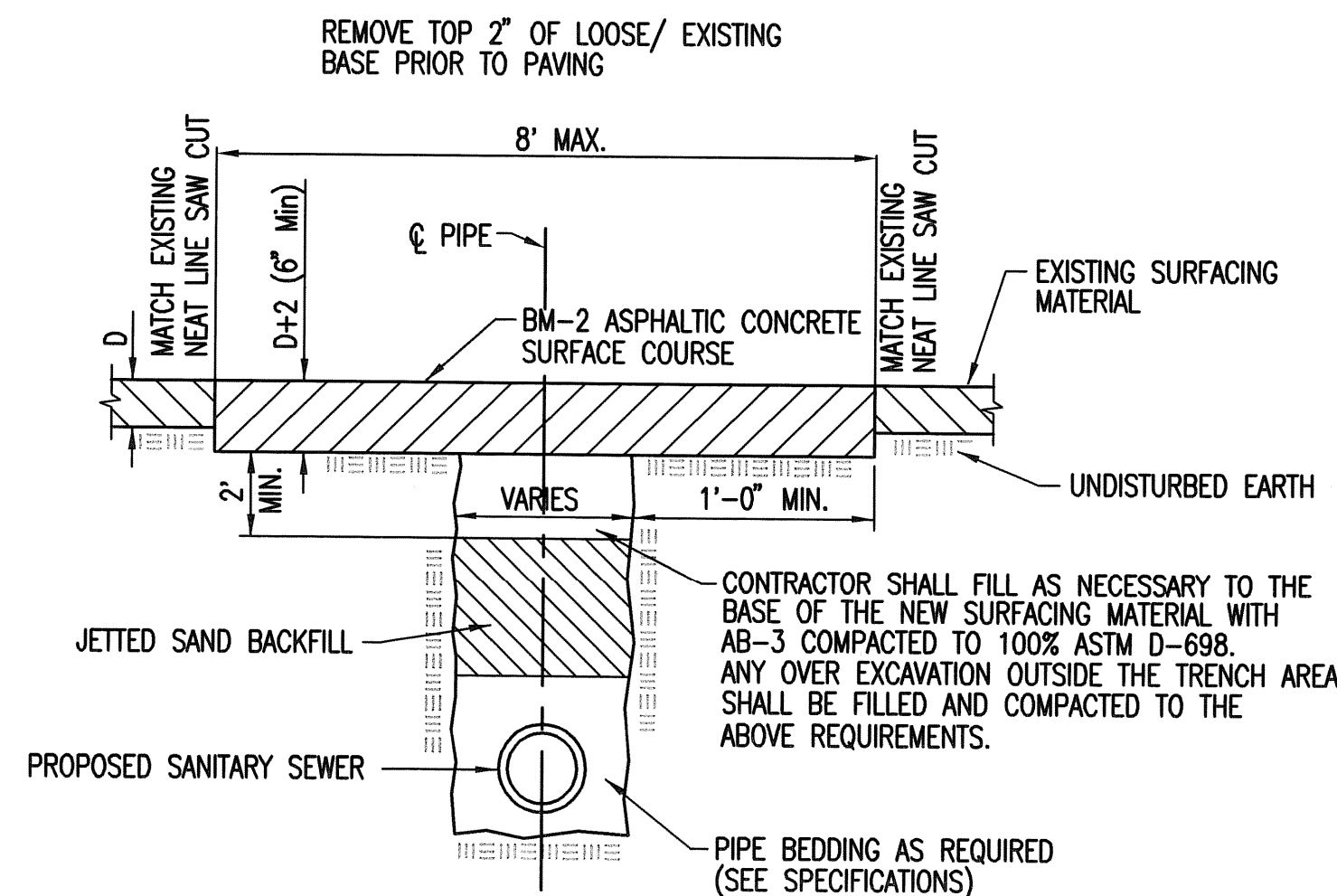
ALL INTERIOR FITTINGS SHALL BE FLANGED OR RESTRAINED JOINT. COST SUBSIDIARY TO 4" FORCE MAIN. ALL INTERIOR DI PIPE SHALL HAVE AN APPROVED EXTERIOR EPOXY COATING PER CITY OF WICHITA REQUIREMENTS.



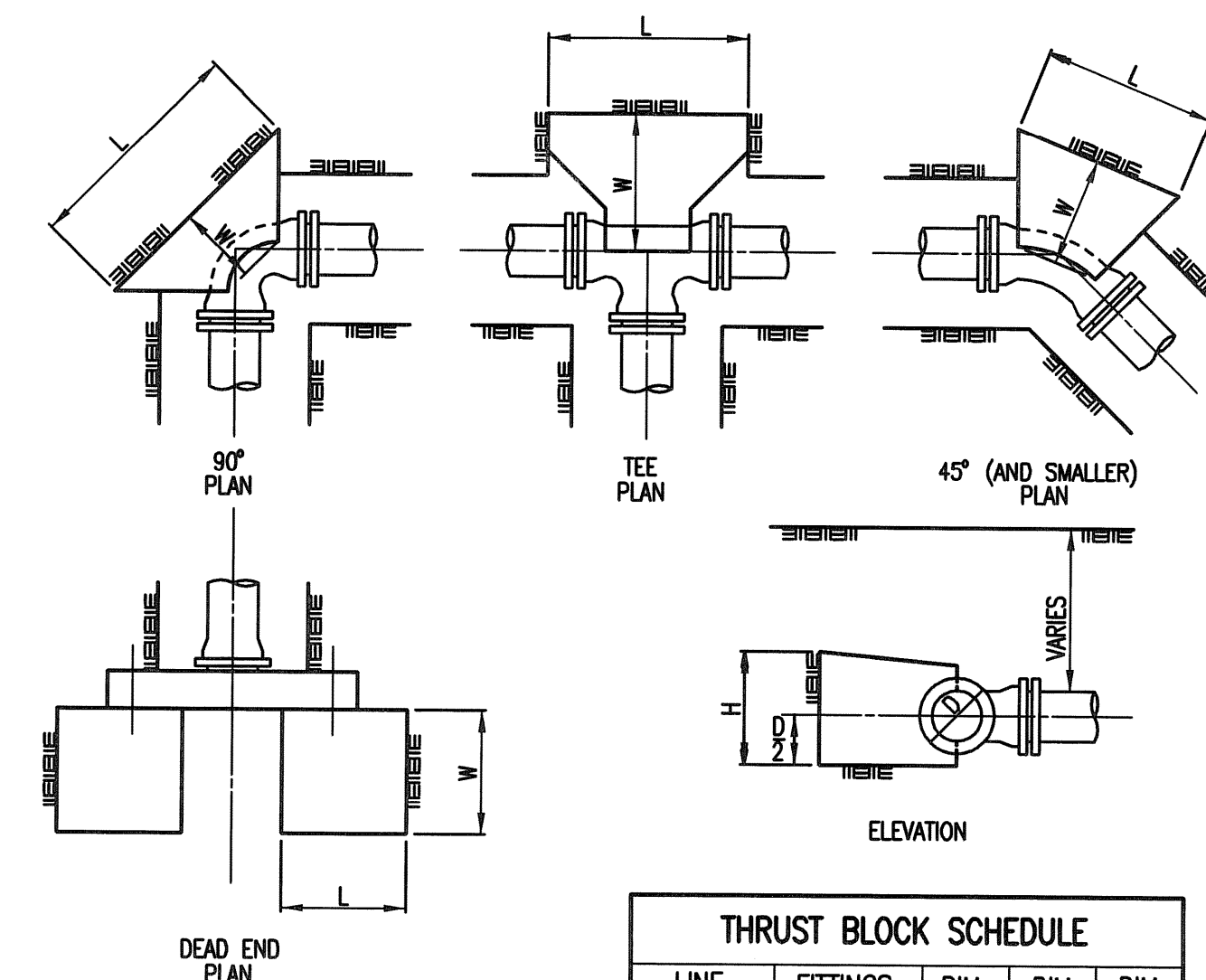
FORCE MAIN CONNECTION PLAN



GRAVEL DRIVE REMOVAL AND REPLACEMENT DETAIL



PAVEMENT REMOVAL AND REPLACEMENT DETAIL



SCALE: 1" = 10'



* PRIOR TO BEGINNING CONSTRUCTION, THE CONTRACTOR SHALL EXCAVATE THE EXISTING 4" PVC PIPE TO VERIFY ITS HORIZONTAL AND VERTICAL LOCATION. THE PIPE LOCATION SHALL BE REPORTED TO THE ENGINEER SO THAT ANY NECESSARY PLAN MODIFICATIONS CAN BE MADE. ANY ADDITIONAL LABOR OR MATERIALS NECESSARY TO COMPLETE THE CONNECTION SHALL BE CONSIDERED SUBSIDIARY TO THE PROJECT.

- ⊔ = CAP OR MASONRY PLUG TO BE INSTALLED.
- ✕ = TREE TO BE REMOVED
- ⊗ = SANITARY SEWER MANHOLE TO BE REMOVED.
- ✕— = SANITARY SEWER TO BE REMOVED/ABANDONED IN PLACE.
- |— = SILT FENCE BARRIER



No.	Revision	By	Date
CITY OF WICHITA LIFT STATION REMOVAL AT KELLOGG AND 151ST STREET WEST SANITARY SEWER IMPROVEMENTS FORCE MAIN CONNECTION GARY JANZEN, P.E. - CITY ENGINEER CITY OF WICHITA PROJECT NO. 468-84860 PROJECT NO. 54-87 K-6657-03 SEDGWICK CO.			
PROFESSIONAL ENGINEERING CONSULTANTS, P.A. 303 SOUTH TOPEKA WICHITA, KS 67202 316-262-2691 www.pec1.com			
Designed by	MDK, SAD	Job No.	08313-002-0042
Drawn by	CSL, JAN	Date	MARCH 2009
			Sht. C7 of C11