

# CITY OF WICHITA, KANSAS

## NEIL D. CABLE, P.E., CITY ENGINEER

# STREET IMPROVEMENTS

## PAVING IMPROVEMENTS

## DECEL LANE

### IN

## REMINGTON PLACE 2ND ADDITION

### CITY OF WICHITA PROJECT NO. 472-83679

### OCA NO. 765786

#### INDEX OF SHEETS

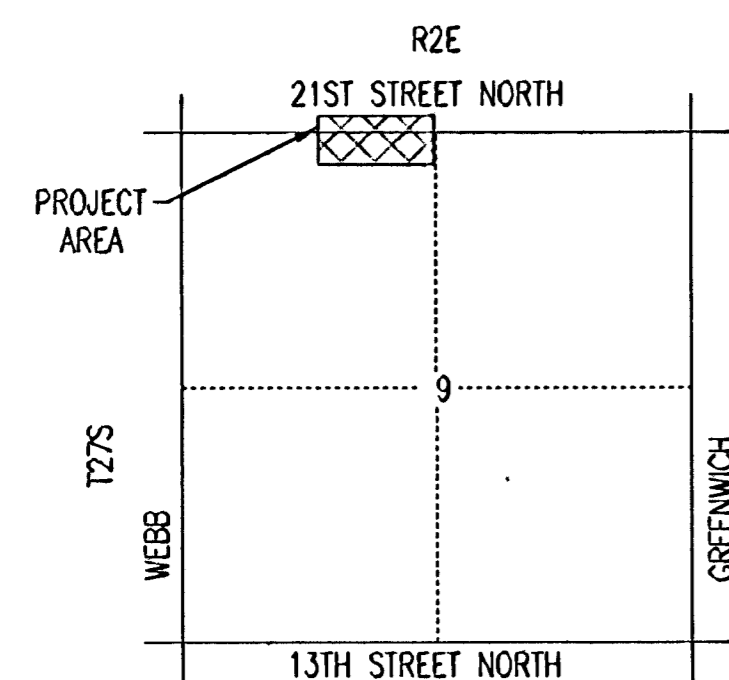
1. TITLE SHEET
2. PLAN
3. TYPICAL SECTIONS
4. PAVING PLANS - DECEL LANE (21ST STREET NORTH)
5. STANDARD DRIVE ENTRANCES
- 6-9. EROSION CONTROL DETAILS
10. CROSS SECTIONS

#### BENCHMARK LIST

- BM #1 - "I" POST IN EAST-WEST TREE ROW NEAR THE SOUTHEAST CORNER OF LOT 12, BLOCK 4, REMINGTON PLACE. ELEV. = 205.595
- BM #2 - "I" POST 40' NORTH AND 6' WEST OF THE SOUTHEAST CORNER OF LOT 7, BLOCK 6, REMINGTON PLACE. ELEV. = 209.525
- BM #4 - "I" POST 75' NORTH AND 12' EAST OF LOT 6, BLOCK 3, REMINGTON PLACE. ELEV. = 210.405
- BM #4-A - "I" POST 5' EAST OF THE NORTHWEST CORNER OF LOT 1, BLOCK 4, REMINGTON PLACE. ELEV. = 209.92
- BM #4-B - "I" POST 5' EAST OF THE EAST RIGHT-OF-WAY OF CRANBROOK AND 110' SOUTH OF THE SOUTH RIGHT-OF-WAY OF 21ST STREET NORTH. ELEV. = 209.645
- BM #4-C - CHISELED "I" IN THE CENTER OF CURB INLET ON THE SOUTH CURB LINE OF 21ST STREET, 50' WEST OF THE NORTH 1/4 CORNER OF SECTION 9, T27S, R2E. ELEV. = 195.385
- BM #6-4 - SET "I" POST IN LOT 6, BLOCK 4, REMINGTON PLACE. 5' WEST OF NORTHEAST CORNER LOT 6, BLOCK 4, REMINGTON PLACE. ELEV. = 203.21
- BM #14-7 - SET "I" POST IN LOT 14, BLOCK 7, REMINGTON PLACE. 10' WEST OF P.C. CURVE. ELEV. = 206.155
- BM #17-3 - FOUND CITY OF WICHITA STREET CURB DISC IN LOT 17, BLOCK 3, REMINGTON PLACE, ON TOP BACK OF CURB AT EAST END OF EXISTING STREET. ELEV. = 209.33
- BM #49-7 - SET "I" POST IN LOT 49, BLOCK 7, REMINGTON PLACE. 10' NORTH OF P.C. CURVE. ELEV. = 211.085
- BM #5 - SET "I" POST IN RESERVE "E", 35' NORTHWEST OF WEST CORNER LOT 4, BLOCK 5, REMINGTON PLACE AND NORTHEASTERLY 10' OF CRANBROOK RIGHT-OF-WAY. ELEV. = 212.56

#### EARTHWORK

EXCAVATION 202 CU. YDS.  
 EMBANKMENT 0 CU. YDS.  
 PROJECT LENGTH = 204.48 LIN. FT.



VICINITY MAP

#### GENERAL NOTES

UNDERGROUND UTILITY SERVICE LINES AND OVERHEAD UTILITY POLE LINES ARE TO BE ADJUSTED AS NECESSARY BY OTHERS PRIOR TO CONSTRUCTION UNLESS THE PLANS SPECIFICALLY CALL FOR THEIR ADJUSTMENT BY THE CONTRACTOR. EXISTING UTILITIES AND THEIR LOCATION, AS SHOWN ON THE PLANS, REPRESENT THE BEST INFORMATION OBTAINABLE FOR DESIGN. LOCATION INFORMATION HAS BEEN OBTAINED FROM THE VARIOUS UTILITY COMPANIES AND IS EITHER FROM COMPANY RECORD DRAWINGS OR COMPANY PROVIDED FIELD LOCATIONS. THE CONTRACTOR WILL BE REQUIRED TO WORK AROUND EXISTING UTILITIES WITHIN THE RIGHT-OF-WAY WHICH DO NOT CONFLICT WITH PROPOSED CONSTRUCTION.

TREES AND SHRUBS IN PUBLIC RIGHT-OF-WAY WHICH ARE IN DIRECT CONFLICT WITH PROPOSED NEW CONSTRUCTION SHALL BE REMOVED BY THE CONTRACTOR WITH THE ENGINEER'S APPROVAL. TREES AND SHRUBS WHICH ARE NOT IN DIRECT CONFLICT WITH PROPOSED NEW CONSTRUCTION SHALL BE SAVED AND PROTECTED FROM DAMAGE.

RUBBLE FROM THE REMOVAL OF MISCELLANEOUS STRUCTURES SHALL BE DISPOSED OF ON SITES TO BE PROVIDED BY THE CONTRACTOR AND APPROVED AS NOTED BELOW.

ALL DISPOSAL SITES MUST BE APPROVED BY THE KANSAS DEPARTMENT OF HEALTH AND ENVIRONMENT. MATERIAL EITHER STOCKPILED OR DISPOSED OF IN A FLOOD PLAIN WOULD REQUIRE A KANSAS STATE BOARD OF AGRICULTURE PERMIT. ANY MATERIAL DUMPED IN WATERS OF THE UNITED STATES OR WETLANDS IS SUBJECT TO U.S. CORPS OF ENGINEERS PERMITTING REGULATIONS. ANY MATERIAL BURIED OR STOCKPILED BEYOND APPROVED CONSTRUCTION LIMITS WOULD REQUIRE ADDITIONAL ARCHEOLOGICAL INVESTIGATIONS UNLESS BURIED IN A PREVIOUSLY APPROVED BORROW LOCATION.

CONTRACTOR SHALL SATISFY HIMSELF OF SURFACE AND SUBSURFACE CONDITIONS PRIOR TO BIDDING.

TEMPORARY SURFACING MATERIAL (ROCK, ASPHALT, ETC.) MAY HAVE BEEN PLACED WITHIN STREET RIGHTS-OF-WAY FOR HAUL ROADS AND TEMPORARY ACCESS. CONTRACTOR SHALL FIELD VERIFY EXISTING CONDITIONS TO DETERMINE EXTENT, IF ANY, OF SUCH SURFACING. CONTRACTOR SHALL REMOVE SAID TEMPORARY SURFACING IN THE SAME MANNER AS NOTED ABOVE FOR RUBBLE. THIS REMOVAL SHALL BE SUBSIDIARY TO "EXCAVATION".

CONTRACTOR SHALL PROVIDE A MINIMUM FORTY-EIGHT (48) HOUR ADVANCE NOTICE (EXCLUDING WEEKENDS AND HOLIDAYS) PRIOR TO BEGINNING ANY EXCAVATION, TO KANSAS ONE-CALL SYSTEM, A UTILITY LOCATION SERVICE, AT (316) 687-2470 TO REQUEST THE FOLLOWING UTILITY COMPANIES TO LOCATE ALL EXISTING LINES WITHIN THE PROJECT AREA: PEOPLES NATURAL GAS, WESTAR ENERGY, SOUTHWESTERN BELL TELEPHONE, COX COMMUNICATIONS, CITY OF WICHITA SEWER MAINTENANCE AND CITY OF WICHITA WATER DEPARTMENT.

THE CONTRACTOR SHALL BE RESPONSIBLE FOR PRESERVING PROPERTY IRONS. THE CONTRACTOR WILL BE REQUIRED TO RE-ESTABLISH ANY PROPERTY IRONS WHICH ARE DAMAGED OR DESTROYED BY HIS CONSTRUCTION OPERATIONS. SUCH IRONS SHALL BE RE-ESTABLISHED BY A LICENSED LAND SURVEYOR IN ACCORDANCE WITH STATE LAWS.

THE WATER DEPARTMENT SHALL FIELD LOCATE WATER VALVES ONE TIME DURING CONSTRUCTION WHEN REQUESTED BY THE CONTRACTOR. IT SHALL BE THE CONTRACTOR'S RESPONSIBILITY TO PRESERVE SUCH FIELD LOCATIONS DURING THE CONSTRUCTION PROCESS. WATER VALVES, WATER VALVE BOXES OR FIRE HYDRANTS DAMAGED DURING CONSTRUCTION SHALL BE REPAIRED BY THE CONTRACTOR AT HIS OWN EXPENSE.

THE CONTRACTOR SHALL ADJUST WATER VALVE BOXES AS DIRECTED BY THE ENGINEER. THIS WORK TO BE SUBSIDIARY TO OTHER BID ITEMS.

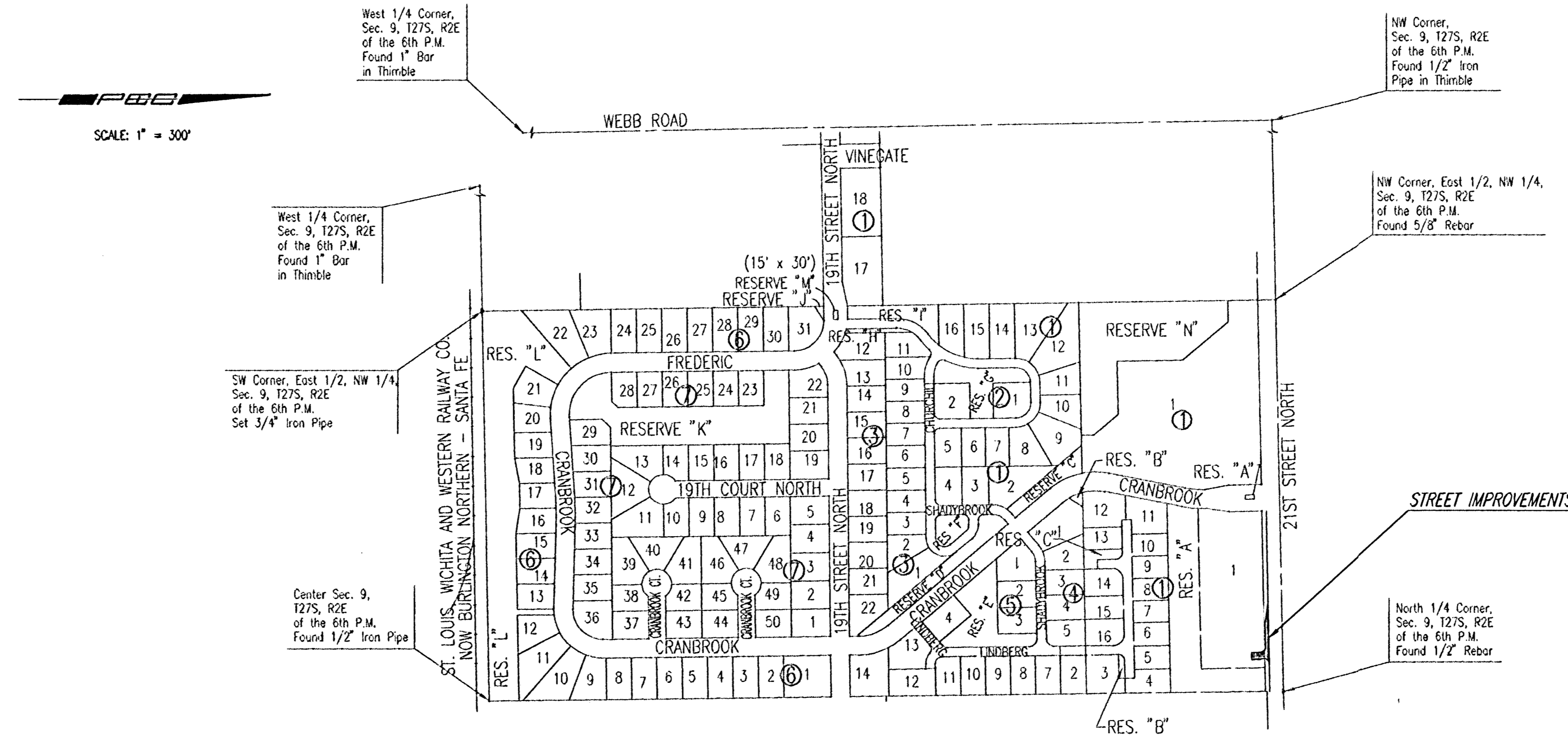
CONTRACTOR SHALL SOD ANY AREA DISTURBED OR DAMAGED FROM BACK OF CURB TO LIMITS OF CONSTRUCTION. THE SOD SHALL BE OF A LIKE VARIETY. IF POSSIBLE, THE EXISTING SOD MAY BE CAREFULLY REMOVED AND RESET AS APPROVED BY THE ENGINEER. THIS WORK SHALL BE PAID FOR AT THE LUMP SUM PRICE BID FOR "SITE RESTORATION".

THE BID ITEM "SITE CLEARING" SHALL INCLUDE THE REMOVAL AND PROPER DISPOSAL OF ALL PAVEMENT, SIDEWALK, CURB AND GUTTER, SWS PIPE, INLETS AND MISCELLANEOUS ITEMS SUCH AS SIGNS, POSTS, ETC. SHOWN TO BE REMOVED OR NECESSARY TO BE REMOVED TO FACILITATE CONSTRUCTION.

EROSION CONTROL (BMP'S)  
 THE CONTRACTOR SHALL INSTALL AND/OR MAINTAIN EROSION CONTROL METHODS AS SPECIFIED ON SHEET 7. THE FOLLOWING QUANTITIES ARE ESTIMATED, AND SHOULD BE CONSIDERED THE MINIMUM EFFORT REQUIRED. INSTALLATION OF THESE BMP'S DOES NOT RELIEVE THE CONTRACTOR OF THE RESPONSIBILITY OF ABATING SOIL EROSION.

INLET PROTECTION 1 EACH  
 BACK OF CURB PROTECTION 211 L.F.

Street Construction  
 The Contractor shall complete this project by June 01, 2003.



# MARCH 2003

PLANS PREPARED BY

**PROFESSIONAL ENGINEERING CONSULTANTS, P.A.**  
**ENGINEERS**  
**WICHITA, KANSAS**

