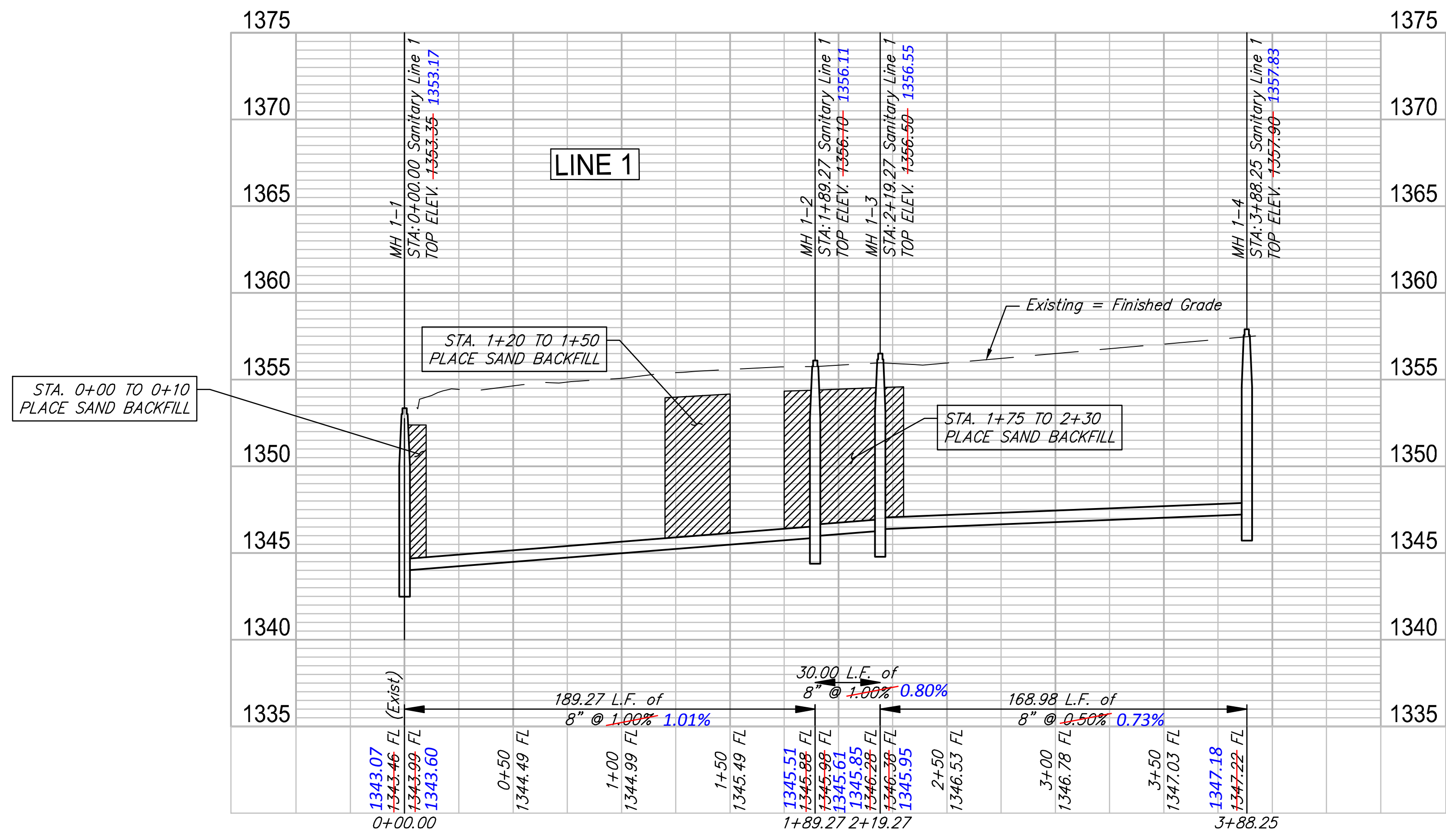


KELLOGG DR.

Scale:
 1" = 5' Vertical
 1" = 40' Horizontal

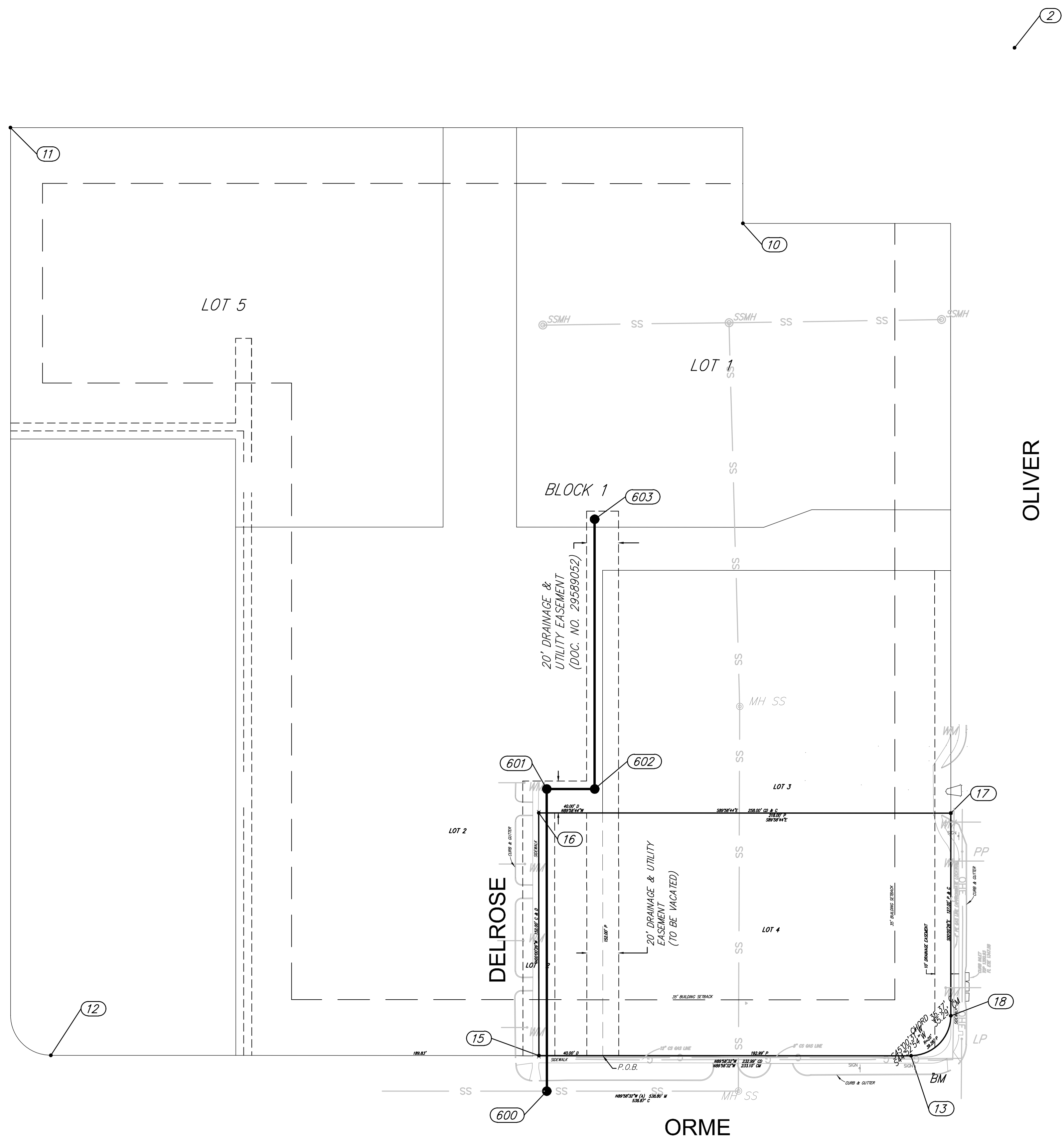


RUGGLES BOHM
 ARCHITECTS & ENGINEERS
 1000 W. 17TH ST., SUITE 100
 WICHITA, KANSAS 67202
 TEL: 316.261.1111 FAX: 316.261.1112

PROJECT NUMBER: 4750E
 DRAWING FILE: 479E BASE
 DESIGN: ##
 DRAWN: ##
 REVIEW: 6/15/16
 DATE: 6/15/16

**Walenta Commercial Addition
 Sanitary Sewer - Line 1
 Wichita, Kansas**

SHEET: 2 OF 11



Point Table

Point #	Northing	Easting	Description
2	21323.51	19999.79	SM 1/2 REBAR X
10	21213.55	19829.67	SM 5/8 RB
11	21273.51	19370.89	SM BPIN 1/2
12	20692.34	19396.21	SM 3/4 IP CONC
13	20692.11	19935.01	PROP COR
15	20692.21	19701.91	PROP COR
16	20844.21	19701.89	PROP COR
17	20844.11	19959.89	PROP COR
18	20717.11	19959.91	PROP COR
600	20669.96	19706.92	MH 1-1
601	20859.22	19706.89	MH 1-2
602	20859.21	19736.89	MH 1-3
603	21028.19	19736.87	MH 1-4

**Valenta Commercial Addition
Coordinate Map**

<p>RUGGLES & BOHM ENGINEERING SURVEYING LANDSCAPE ARCHITECTURE GOVERNMENT 924 NORTH MAIN WICHITA, KANSAS 67203 P (316) 264-8008 F (316) 264-4621 WWW.RBKANSAS.COM</p>	<p>DATE: 8-8-2016 DESIGN: KWL DRAWN: KWL/DRS REVIEW: 7-13-2016 SHEET: 10 OF: 11</p>	<p>PROJECT NUMBER: 468-85121 DRAWING FILE: 4750E BASE [Coordinate Map]</p>
<p>RB JOB NO.: 4750E DWG. SCALE: ...</p>		

ANN WALENTA COMMERCIAL ADDITION

Wichita, Sedgwick County, Kansas

State of Kansas) SS
Sedgwick County)

We, Ruggles & Bohm, P.A., Land Surveyors in aforesaid county and state, do hereby certify that, under the supervision of the undersigned, we have surveyed and platted "ANN WALENTA COMMERCIAL ADDITION", Wichita, Sedgwick County, Kansas, and that the accompanying plat is a true and correct exhibit of the property surveyed, described as follows:

Lots 1 and 2, Block A, AND Lot 1, Block B, Ann Walenta Addition, Wichita, Sedgwick County, Kansas;

The South 30 feet of Lot 14, all of Lots 15, 16, 17, 18, 19, and 20, and the south 24 feet of Lot 21, Block 1, and the South 40 feet of Lot 6, all of Lots 7, 8, 9, 10, 11 and 12, the North 5 feet of Lot 20, and all of Lot 21, Block 2, Kellogg Heights Addition to Wichita, Kansas;

Dellosre Avenue from the south line of Lots 1 and 2, Block A, in said Ann Walenta Addition to the north right-of-way line of Orme Street;

The north 72.05 feet of Lot 1, De Witt 2nd Addition, Wichita, Kansas, Sedgwick County, Kansas;

Eilerts Street from the east right-of-way line of Oliver to the west right-of-way line of Glendale Avenue.

All public easements and dedications are hereby vacated by virtue of K.S.A. 12-512(b).

Ruggles & Bohm, P.A.

Thomas C. Ruggles
Land Surveyor

Know all men by these presents that we, the undersigned, have caused the land described in the surveyor's certificate to be platted into Lots and Blocks, to be known as "ANN WALENTA COMMERCIAL ADDITION", Wichita Sedgwick County, Kansas. Access Controls as indicated are hereby granted to the appropriate governing body. Utility Easements are hereby granted for the construction and maintenance of all public utilities. The wall easement is hereby reserved for the construction and maintenance of a screening wall by the lot owners. The Drainage Easements are hereby granted to the public as indicated for drainage purposes. A drainage plan has been developed for this plat; the property shall remain at established grades, or as modified with the approval of the City Engineer, and unobstructed to allow for the conveyance of storm water.

S.J. Ram, LC, a Kansas limited liability company

Donald Walenta Managing Member
Donald Walenta

State of Kansas) SS
Sedgwick County)

The foregoing instrument acknowledged before me, this 21 day of June, 2009, by Donald Walenta, Managing Member, on behalf of S.J. Ram, LC, a Kansas limited liability company.

TODD S. HEPTIG
Notary Public - State of Kansas
My Appt. Expires 12-12-11

Todd S. Heptig Notary Public

My appointment expires 6-12-11

We the undersigned, holders of a mortgage on a portion of the above described property, do hereby consent to this plat of "ANN WALENTA COMMERCIAL ADDITION", Wichita, Sedgwick County, Kansas.

Emprise Bank

Thomas J. McGrath, Senior Vice President
Thomas J. McGrath

State of Kansas) SS
Sedgwick County)

The foregoing instrument acknowledged before me this 8th day of June, 2009, by Thomas J. McGrath, Senior Vice President of Emprise Bank, on behalf of the Bank.

Karla S. Wildeman, Notary Public

My appointment expires 12/31/2012

This plat of "ANN WALENTA COMMERCIAL ADDITION", Wichita, Sedgwick County, Kansas, has been submitted to and approved by the Wichita-Sedgwick County Metropolitan Area Planning Commission, Wichita, Kansas.

Dated this 7th day of April, 2009.

Wichita-Sedgwick County Metropolitan Area Planning Commission

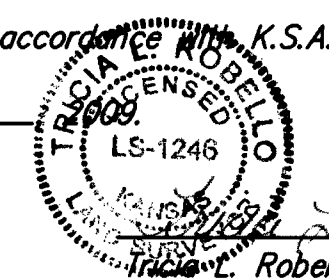


Darrel Bawning Chair
Darrel Bawning
John L. Schlegel Secretary
John L. Schlegel

This plat approved and all dedications shown herein accepted by the City Council of the City of Wichita, Kansas, this 7th day of July, 2009.

At the Direction of the City Council
Carl Brewer Mayor
Carl Brewer
Karen Sublett, CMU City Clerk
Karen Sublett

Reviewed in accordance with K.S.A. 58-2005 on this 5th day of May



Theresa C. Robello Deputy County Surveyor
Theresa C. Robello, LS #1246

Entered on transfer record this 15th day of July, 2009.



Kelly B. Arnold County Clerk
Kelly B. Arnold

State of Kansas) SS
Sedgwick County)

This is to certify that this plat has been filed for record in the office of the Register of Deeds, this 15th day of July, 2009, at 10:51:06 o'clock A.M., and is duly recorded.

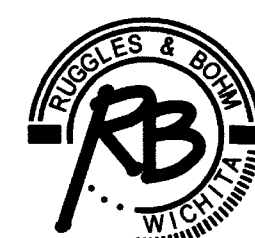
Bill Meek Register of Deeds
Bill Meek

Tonya Buckingham Deputy
Tonya Buckingham

Sedgwick County
Register of Deeds - Bill Meek
DOC # FLH-PG: 25076371
Serial #: 1723101
Page Recorded: 1
Clerk: Bill Meek
Authorized By: *Bill Meek*
Date Recorded: 7/15/2009 10:51:06 AM

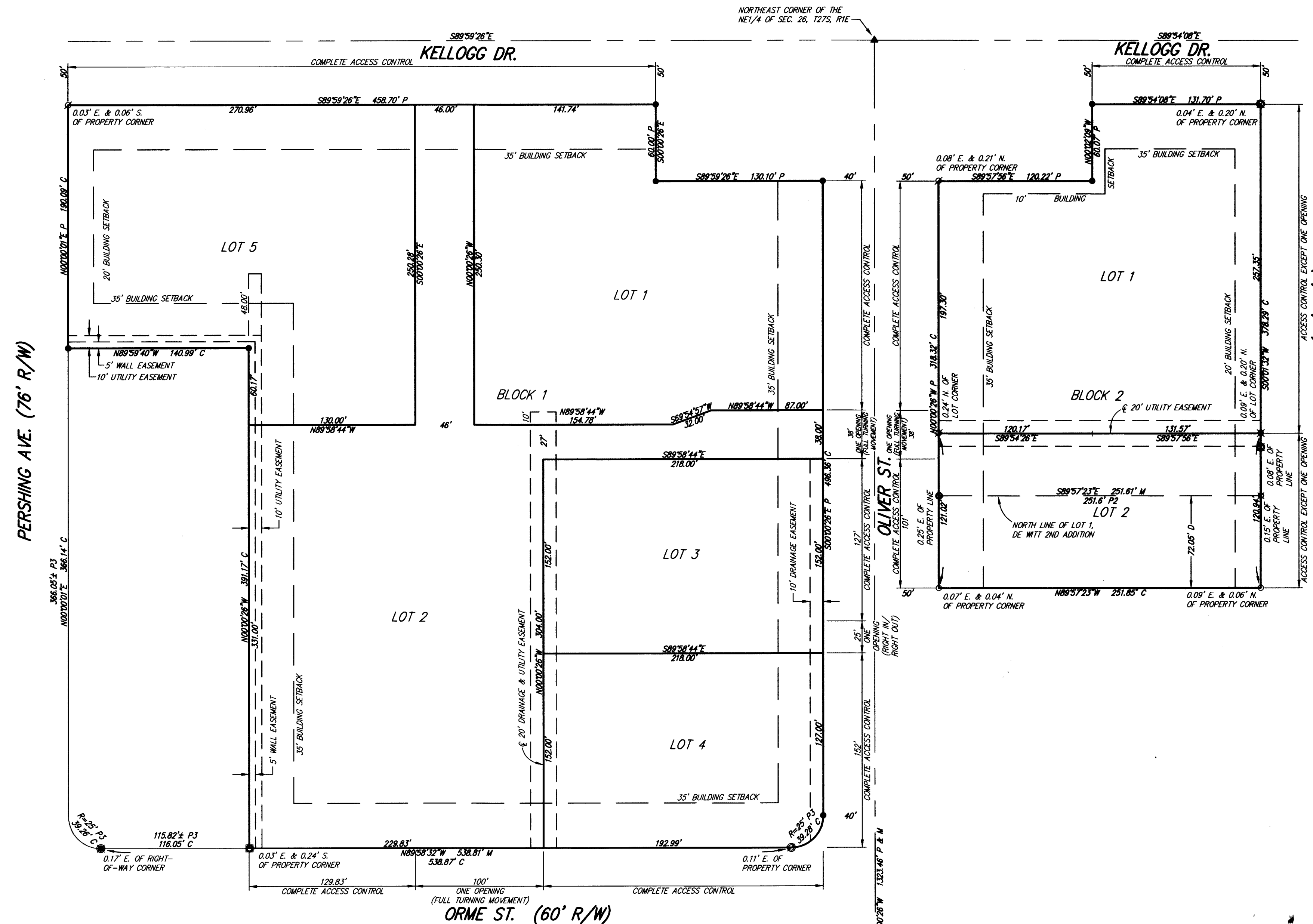
Sheet 11 of 11

Ruggles & Bohm, P.A.
Engineering, Surveying, Land Planning
924 North Main (316) 264-8008
Wichita, Kansas 67203 (316) 264-4621 fax
www.rtkansas.com E-mail: info@rtkansas.com



DWG FILE: SURVEY BASE
PROJECT NO. 3391P
APRIL 30, 2009

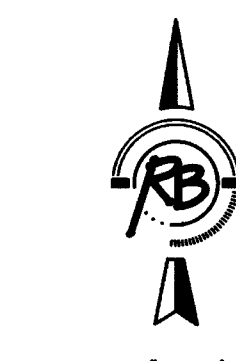
PC 214-2



NOTE: THIS ADDITION IS SUBJECT TO THE CONDITIONS OF OLIVER RETAIL CENTER COMMUNITY UNIT PLAN (CUP 2008-24, DP-261)

BENCH MARK: CHISELED SQUARE ON THE TOP OF CURB AT THE CENTERLINE OF PERSHING, AT THE NORTH END OF PERSHING ON THE SOUTH SIDE OF E. KELLOGG DR. S. ELEVATION = 1357.61 (NAVD88)

BENCH MARK: CHISELED SQUARE ON THE TOP OF CURB AT THE SOUTH CURB RETURN, AT THE SOUTHEAST CORNER OF GLENDALE AND E. KELLOGG DR. S. ELEVATION = 1350.90 (NAVD88)



(A) = Assumed Basis of Bearing
P = Platted (Ann Walenta Addition)
P2 = Platted (De Witt 2nd Addition)
M = Measured
C = Calculated
D = Described

- SURVEY MARKER LEGEND
- 1/2" IRON PIPE IN THIMBLE (FOUND - ORIGIN UNKNOWN)
 - SQUARE BOLT (FOUND - ORIGIN UNKNOWN)
 - ▲ 1/2" CAPPED REBAR IN CROSS (FOUND - ORIGIN UNKNOWN)
 - 1/2" REBAR (FOUND - ORIGIN UNKNOWN)
 - ⊗ MAG NAIL (FOUND - ORIGIN UNKNOWN)
 - PK NAIL IN A RAILROAD TIE (FOUND - ORIGIN UNKNOWN)
 - ⊗ 1/2" REBAR W/REBAR W/BAUGHMAN CAP (FOUND)
 - 1" IRON PIPE (FOUND - ORIGIN UNKNOWN)
 - 1/2" IRON PIPE (FOUND - ORIGIN UNKNOWN)
 - ⊗ 3/4" IRON PIPE IN CONCRETE (FOUND - ORIGIN UNKNOWN)
 - ⊗ 1/2" REBAR - SPINNER (FOUND - ORIGIN UNKNOWN)
 - 5/8" REBAR W/ACLS CAP (FOUND)
 - 5/8" REBAR W/RUGGLES & BOHM CAP (SET)