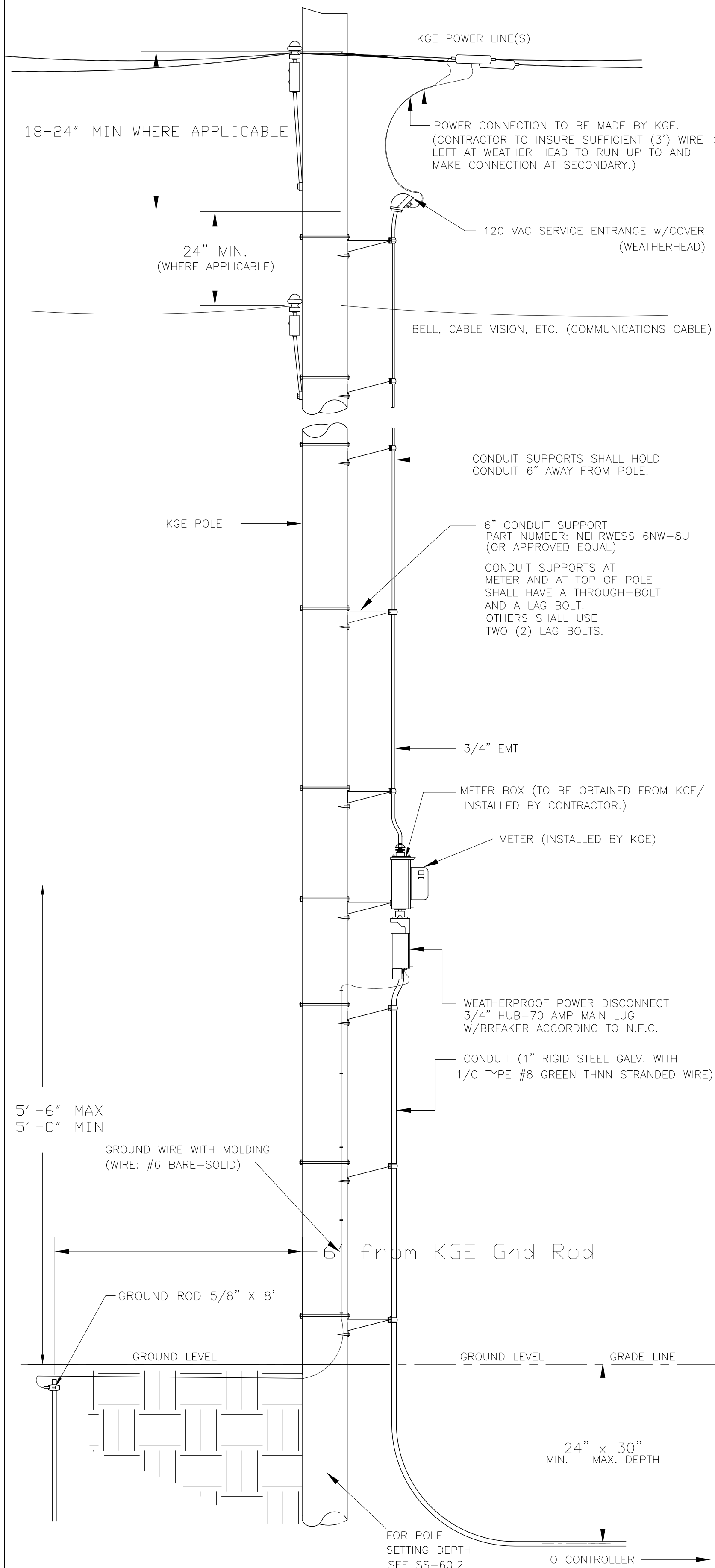
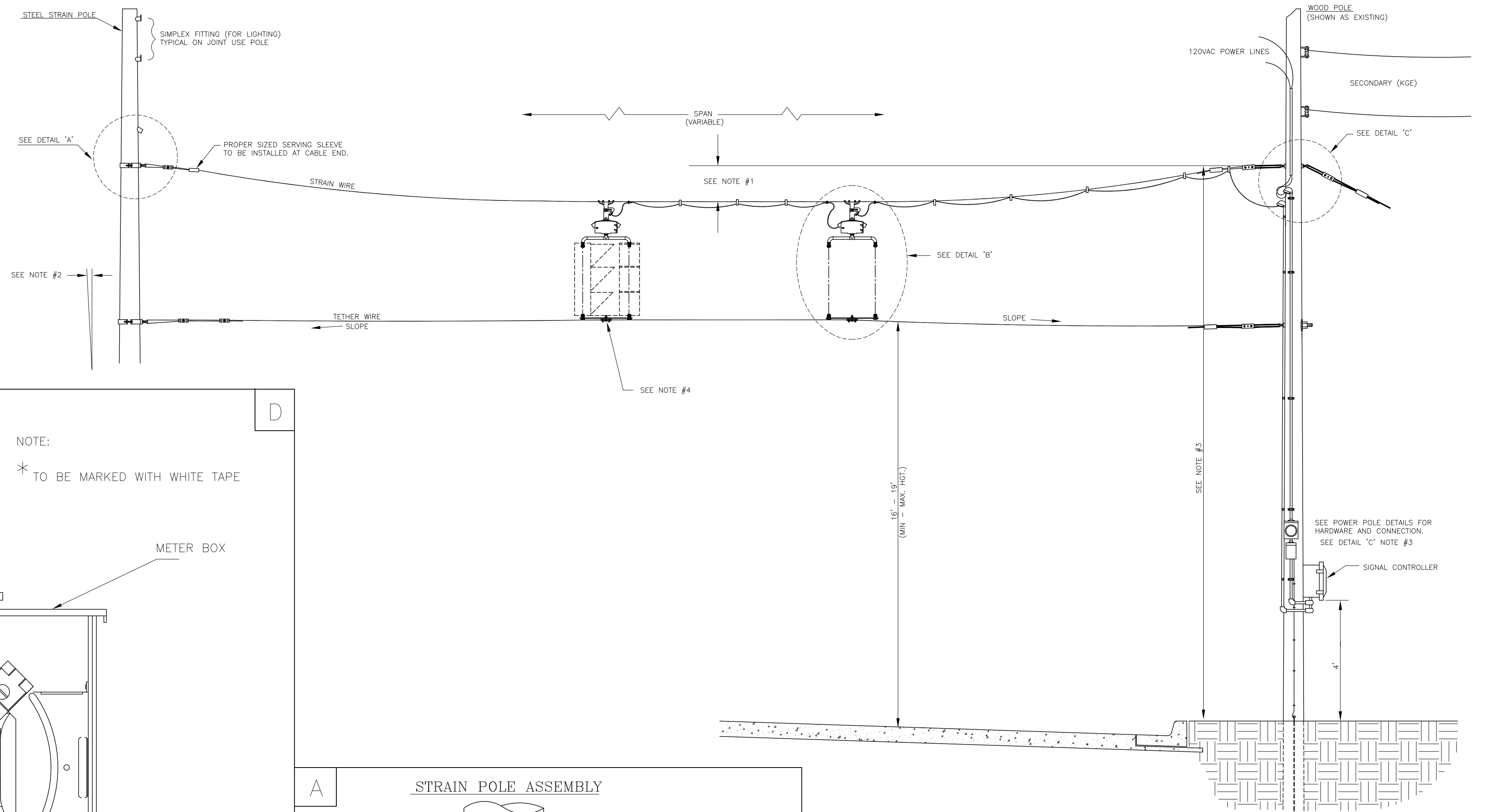


POWER POLE DETAILS

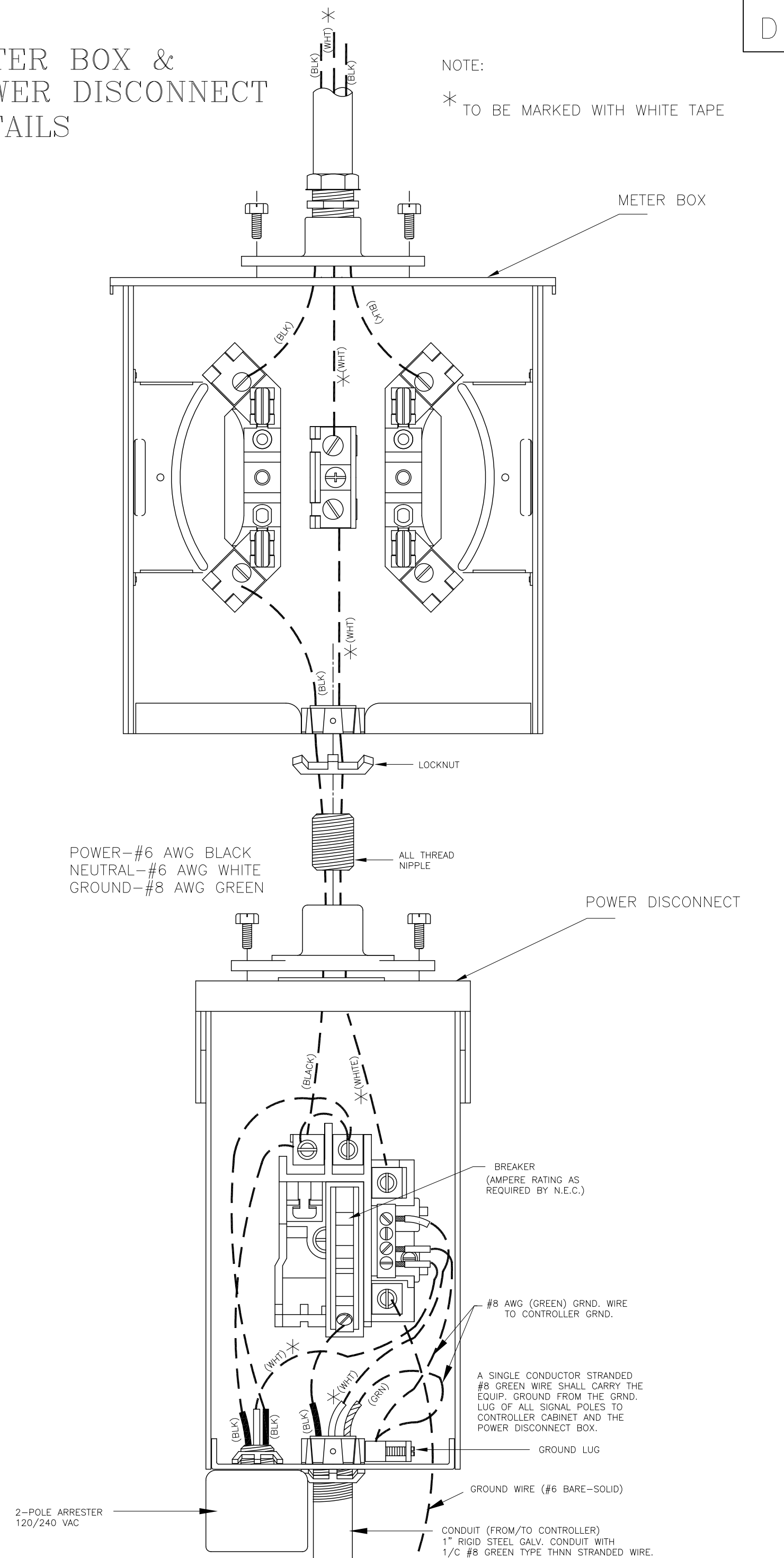


SPANWIRE ASSEMBLY DETAILS

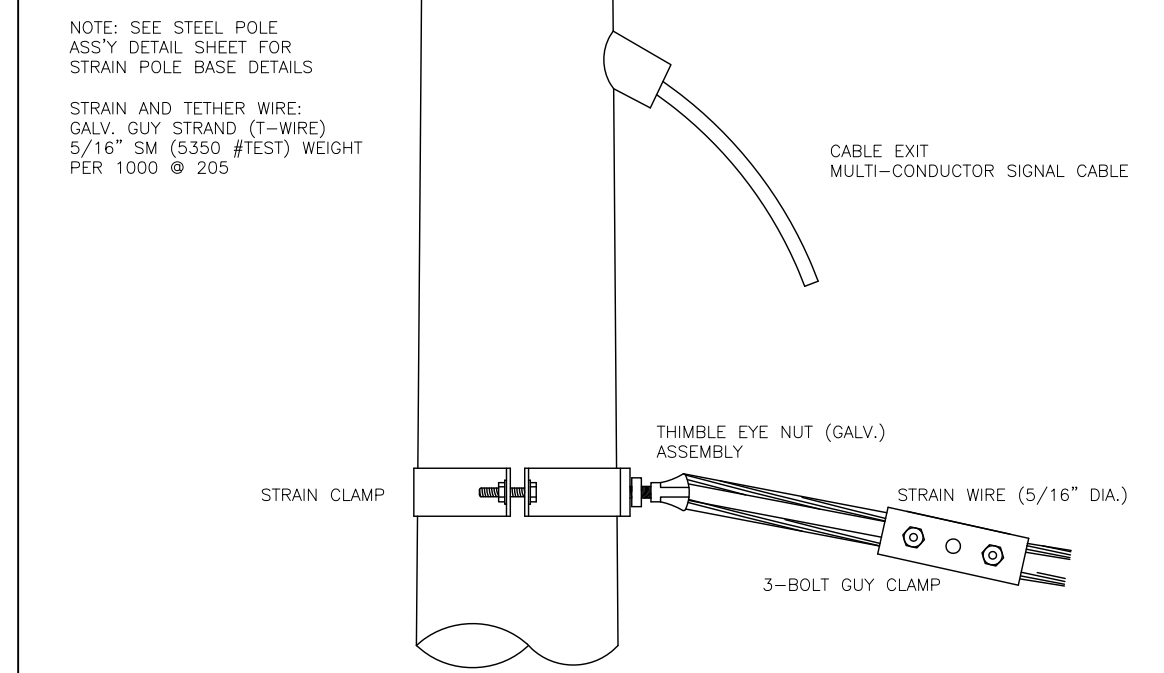
1. MAX. SAG = 5% OF SPAN.
2. STANDARD BACKRAKE = 1.5'
3. HEIGHT OF STRAIN WIRE HOOK-UP TO BE DETERMINED BY FIELD ENGINEER. TRAFFIC SIGNAL CABLE TO BE SECURED TO STRAIN (SPAN) WIRE WEATHERABLE NYLON CABLE HANGERS (12" CTR.) DETAIL 'B'
4. TETHER CLAMP TO BE DESIGNED TO RELEASE UNDER 'HIGH WIND LOAD' TO PERMIT SIGNAL 'FREE SWING'.



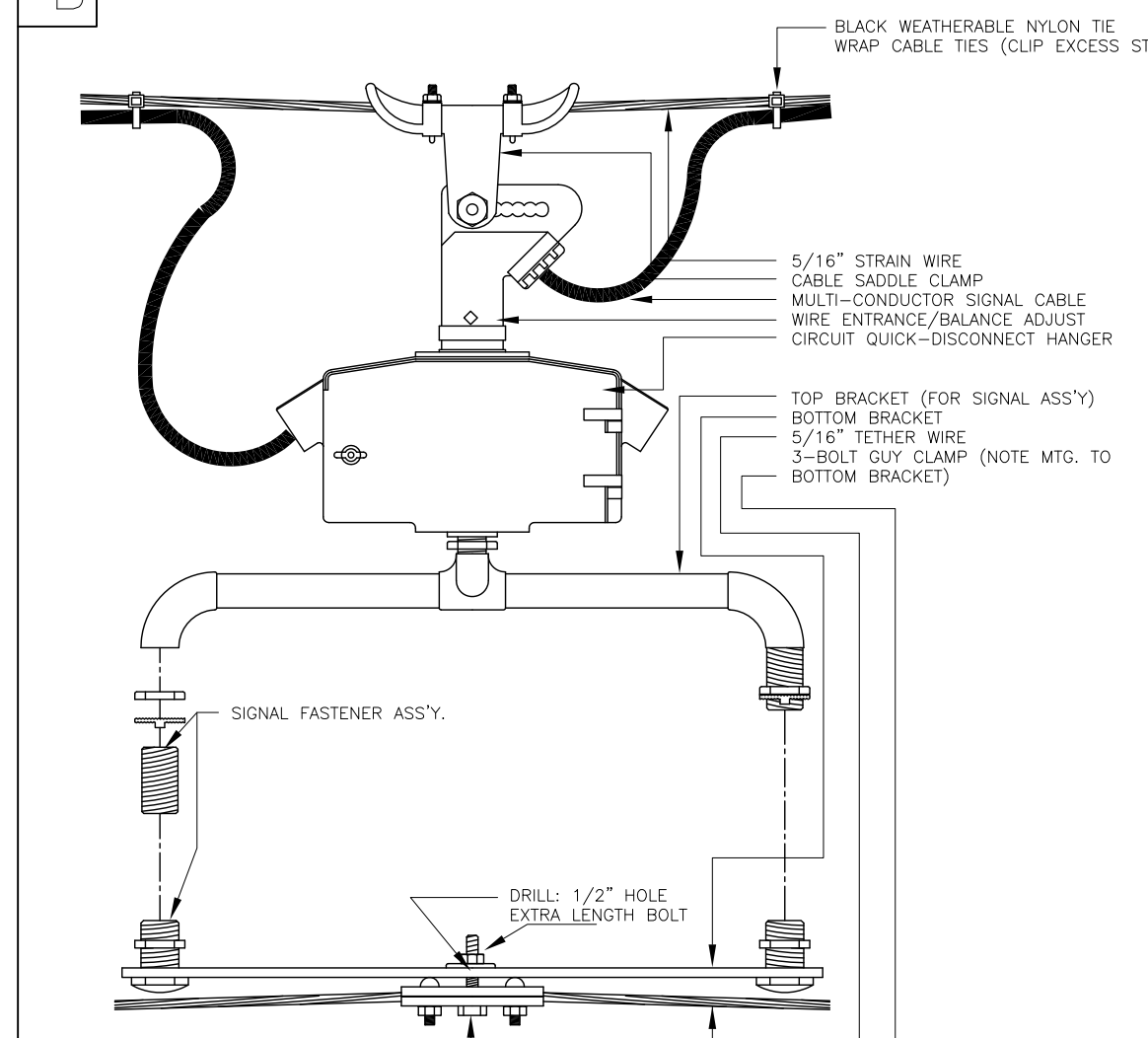
METER BOX & POWER DISCONNECT DETAILS



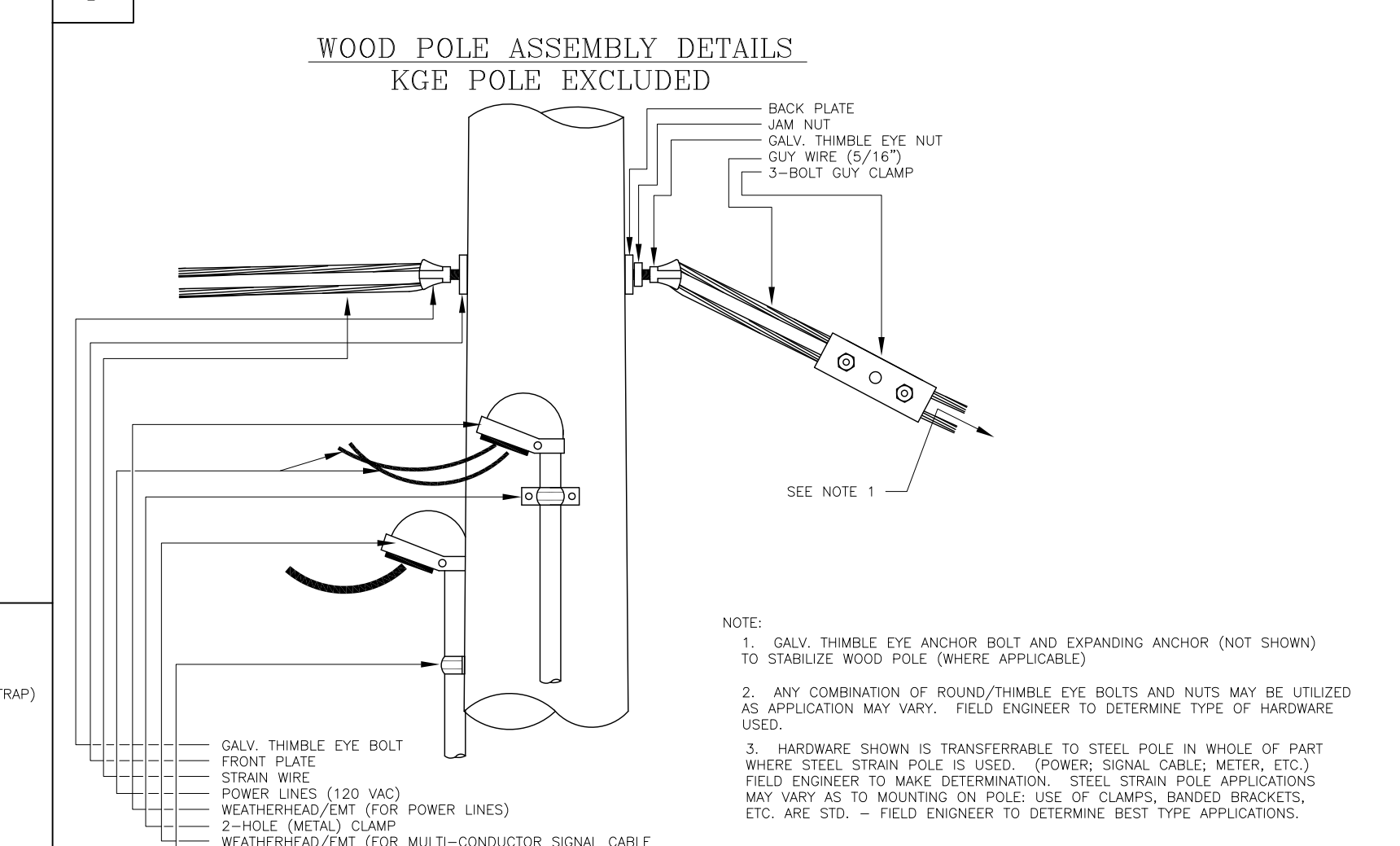
A STRAIN POLE ASSEMBLY



B SIGNAL BRACKET ASSEMBLY DETAILS



C WOOD POLE ASSEMBLY DETAILS KGE POLE EXCLUDED



CITY OF WICHITA
PUBLIC WORKS & UTILITIES
ENGINEERING DIVISION

POWER POLE AND SPAN POLE ASSEMBLY DETAILS

TRAFFIC ENGINEER
PAUL GUNZELMAN, P.E.

PROJECT NUMBER	OCA NUMBER	DATE
		11/2003

CITY ENGINEER'S OFFICE
CITY HALL - SEVENTH FLOOR
455 NORTH MAIN STREET
WICHITA, KANSAS 67202-1620
(316) 268-4501

SHEET