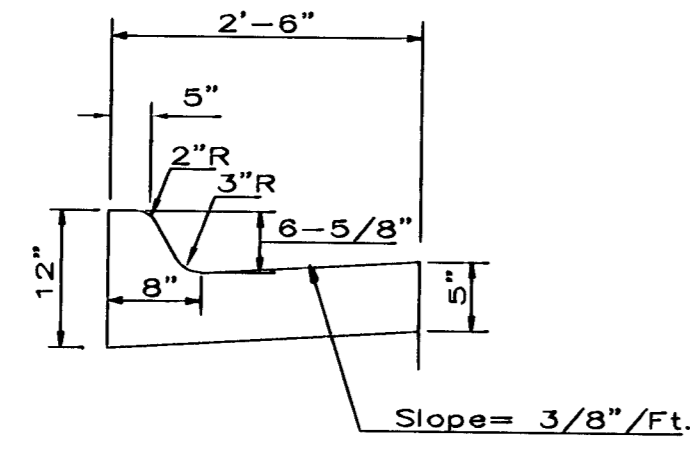
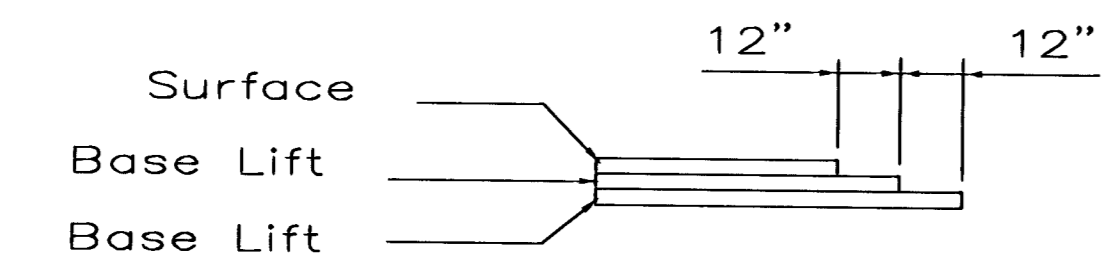


21ST ST. NORTH



COMBINED CURB & GUTTER



TRANSVERSE CONSTRUCTION JOINTS

Transverse construction joints shall be constructed in flexible base pavements at locations where pavement joins existing flexible base pavement as shown by the detail. All costs associated with the construction of the transverse joint shall be included in the bid price for Square Yards 8" ASPHALTIC CONCRETE (6" BITUMINOUS BASE).

General Notes

THE ASPHALTIC CONCRETE PAVEMENT BETWEEN THE COMBINED CURB AND GUTTER SHALL BE PAID AS SQUARE YARDS OF 8" ASPHALTIC CONCRETE W/ (6" BITUMINOUS BASE.)

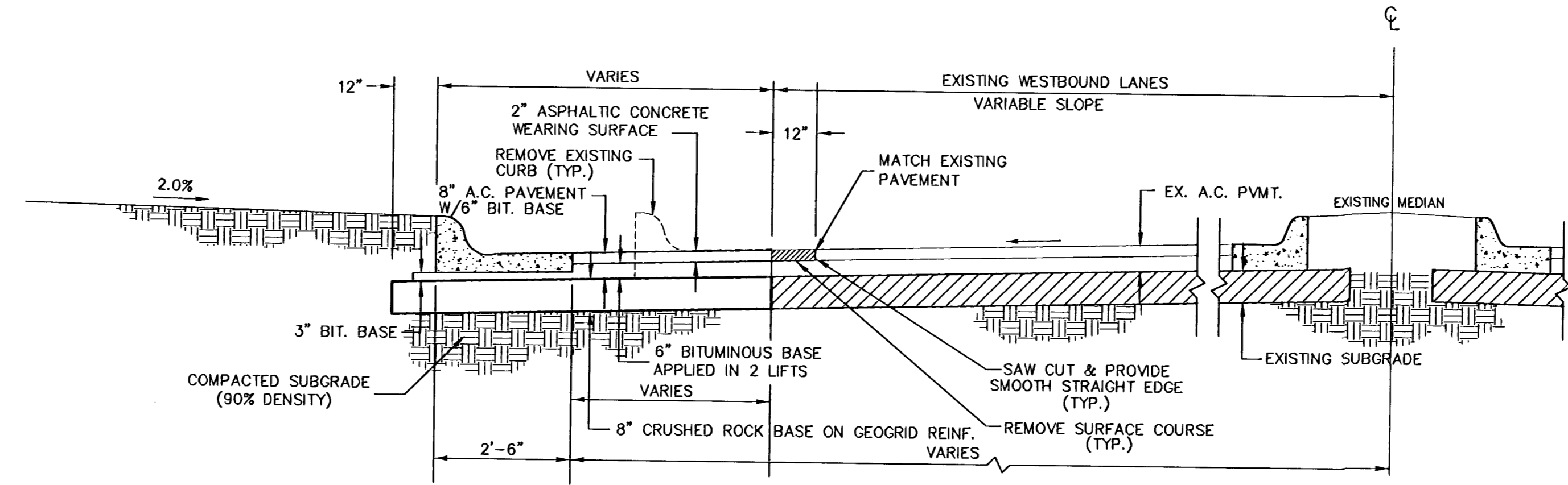
THE BITUMINOUS BASE UNDER AND BEHIND THE COMB. CURB AND GUTTER SHALL BE PAID AS SQUARE YARDS OF 3" BITUMINOUS BASE.

A TACK COAT OF EMULSIFIED ASPHALT (SC-1H OR CSS-1H) SHALL BE APPLIED AT AN APPROXIMATE RATE OF 0.05 GALLONS PER SQUARE YARD BETWEEN EACH LIFT OF ASPHALTIC MATERIAL.

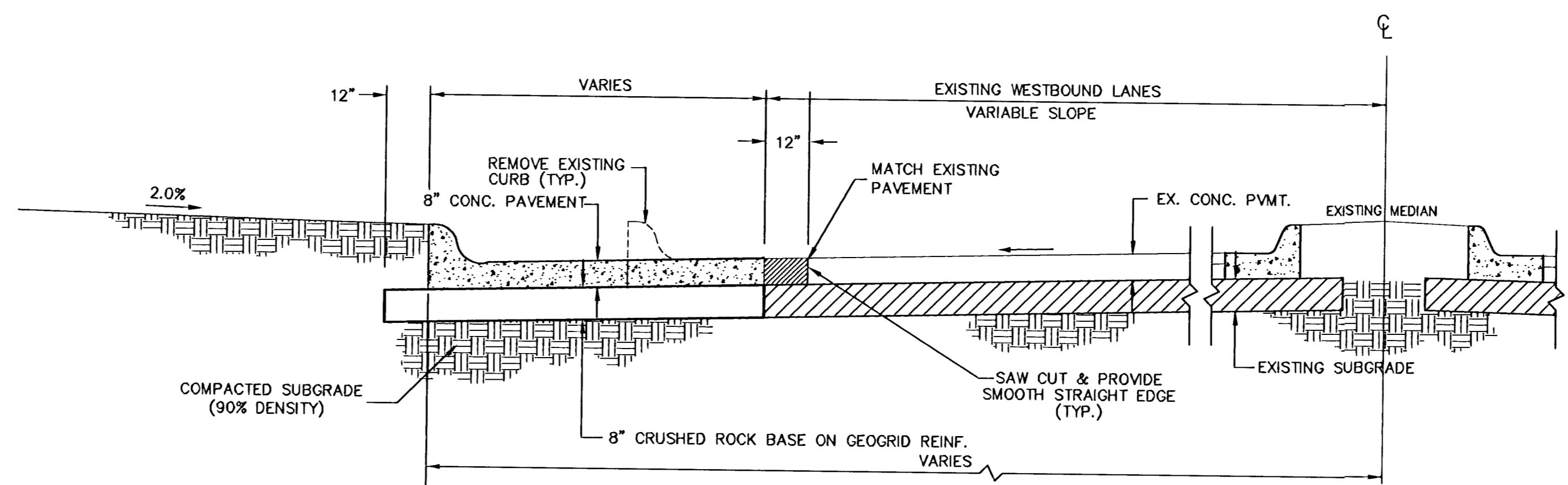
BITUMINOUS BASE AND ASPHALTIC CONCRETE WEARING SURFACE SHALL BE PLACED WITH A LAYDOWN MACHINE HAVING AUTOMATIC CONTROLS FOR LINE AND GRADE.

CONSTRUCTION JOINTS IN EACH LIFT SHALL BE STAGGERED A MINIMUM DISTANCE OF ONE (1) FOOT FROM JOINTS IN PRECEDING LIFTS AND PLACED SO THAT A JOINT WILL BE CONSTRUCTED ON THE CENTERLINE OF THE TOP LIFT.

CONTRACTOR TO BID ONLY ONE SUBGRADE TREATMENT ALTERNATE WHEN ALTERNATES ARE PROVIDED IN THE PROPOSAL AND CONTRACT. THE ALTERNATE CHOSEN BY THE SUCCESSFUL BIDDER SHALL BE USED IN CONSTRUCTING THIS PROJECT.



TYPICAL A.C. PAVEMENT SECTION WITH WIDENING

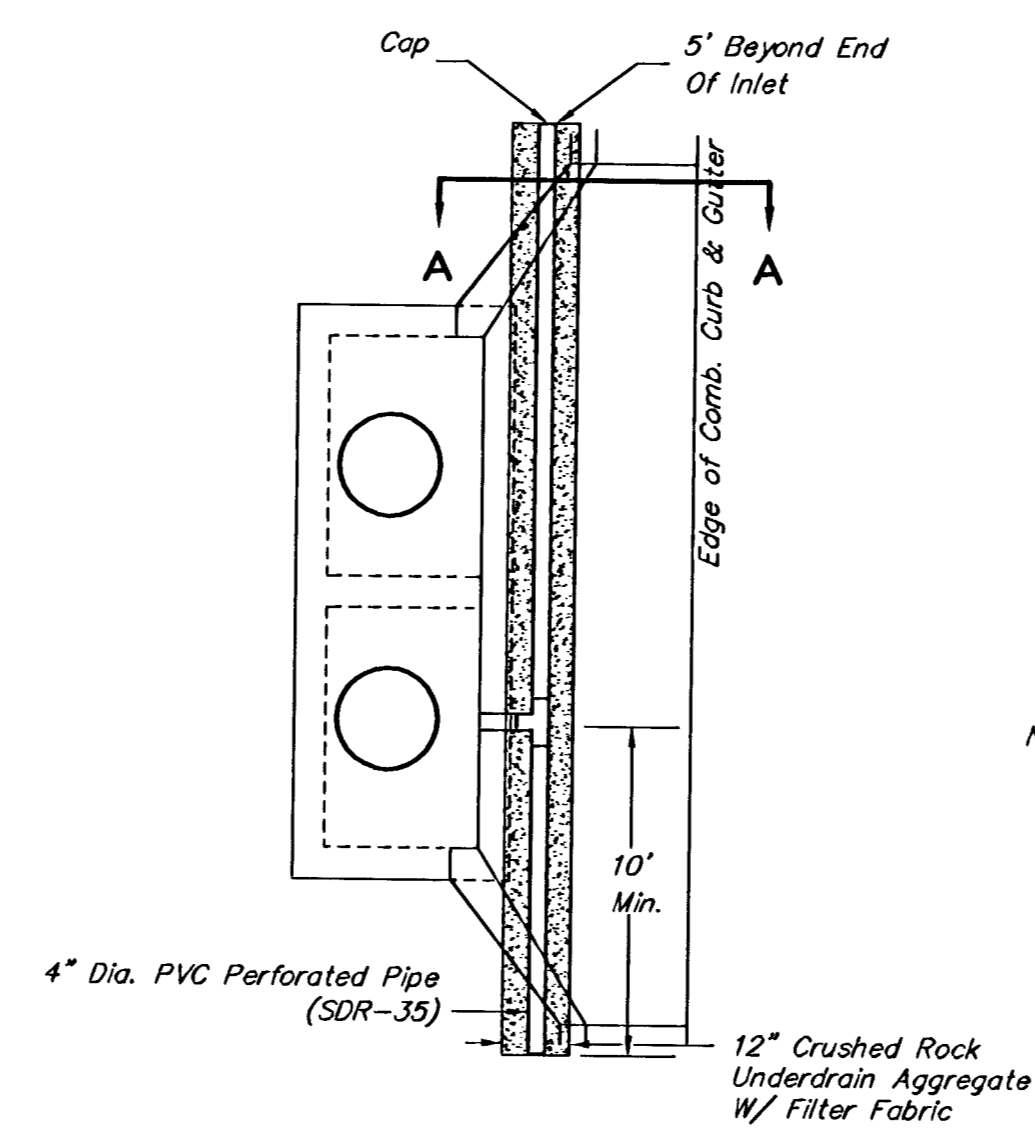


TYPICAL CONCRETE PAVEMENT SECTION WITH WIDENING

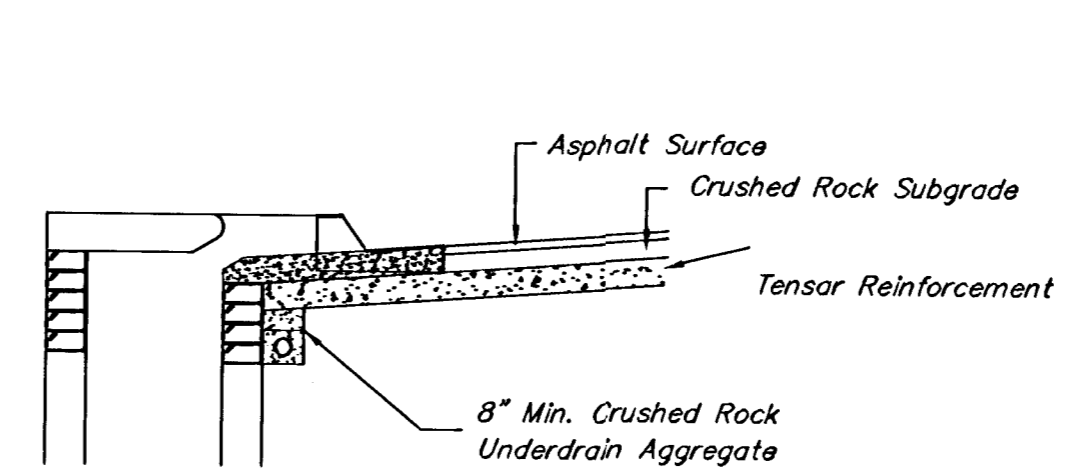
CRUSHED ROCK GRADATION REQUIREMENTS
Percent of Aggregate Retained

1 1/2"	0
3/4"	15-60
# 4	40-80
#40	74-92
P-200	4-12

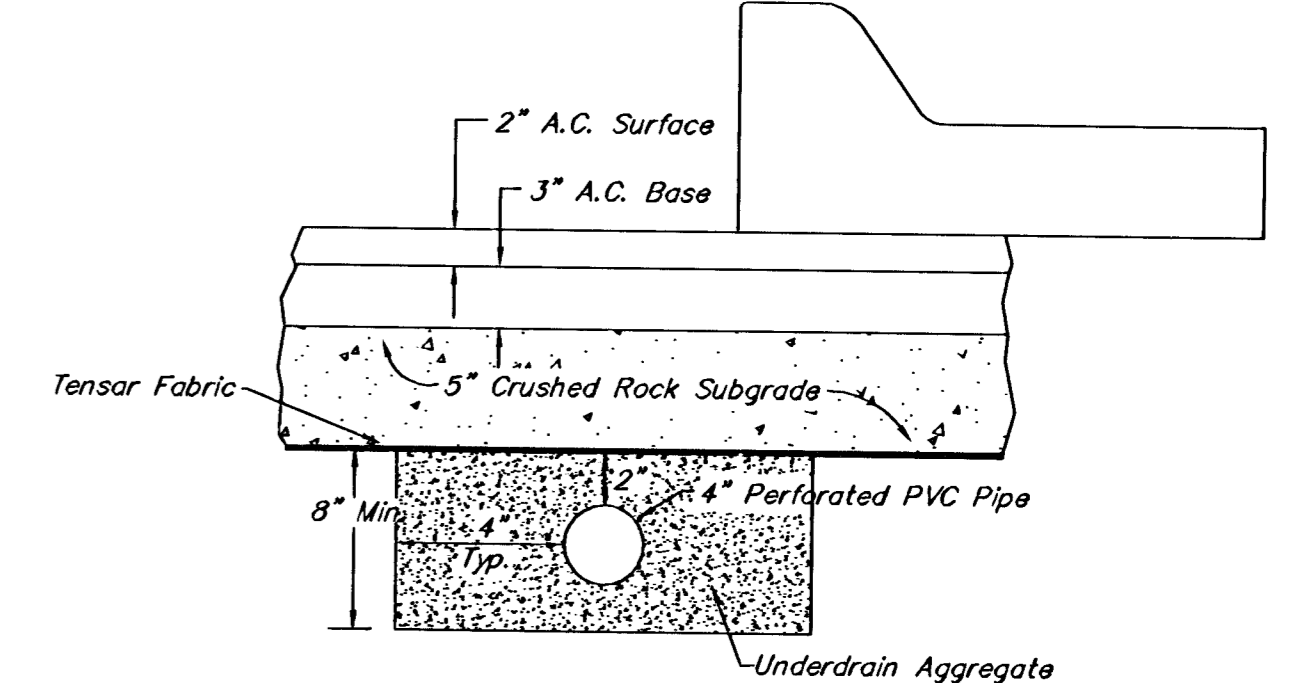
Rock Quality Shall Be The Same As Specified For Coarse Aggregate For Asphalt Concrete Mixes.



Type 1-A Inlet
PAVEMENT UNDERDRAIN DETAIL



NOTE: Place 4" PVC Perforated Pipe at all drainage sump locations.
Cost of Underdrain System to be incidental to the Reinforced Crushed Rock Subgrade.



MKEC
ENGINEERING
CONSULTANTS
411 N. WEBB ROAD
WICHITA, KS. 67204
316-684-9600

CITY OF WICHITA
PROJECT NAME

PAVEMENT DETAILS
SHEET TITLE

DAC DESIGN BY: DAC DRAWN BY: JTC CHECKED BY:

MAY 2003 DATE: 02212 JOB NO. 2 / 20 SHEET/OF

K:\MEPS\MESSIAH-BAPTIST\CIVIL\02212\PAVE\02212ED1.DWG