

# MESSIAH BAPTIST CHURCH 4TH ADDITION

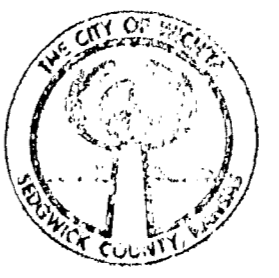
## SEDGWICK COUNTY, KANSAS

This plat of "MESSIAH BAPTIST CHURCH 4TH ADDITION", Wichita, Sedgwick County, Kansas has been submitted to and approved by the Wichita-Sedgwick County Metropolitan Area Planning Commission, Wichita, Kansas. Dated this 12<sup>th</sup> day of June, 1998. Wichita-Sedgwick County Metropolitan Area Planning Commission



John G. Frye, Chairman  
Marvin S. Krout, Secretary

This plat approved and all dedications shown hereon accepted by the City Council of the City of Wichita, Kansas, this 2<sup>nd</sup> day of March, 1998.



Bob Knight, Mayor  
Pat Burnett, City Clerk

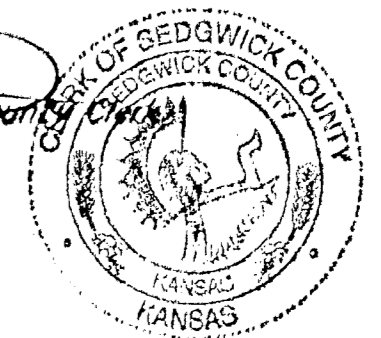
This plat approved and all dedications shown hereon accepted by the Board of Commissioners of Sedgwick County, Kansas, this 29<sup>th</sup> day of June, 1998.

Mark F. Schroeder, Chairman  
Paul W. Hancock, Chair Pro-Tem  
Betsy Ewin, Commissioner  
Melody C. Miller, Commissioner  
Thomas G. Winters, Commissioner  
James Alford, County Clerk



Entered on transfer record this 29<sup>th</sup> day of June, 1998.

James Alford, County Clerk



This is to certify that this plat has been filed for record in the office of the Register of Deeds, this 30<sup>th</sup> day of June, 1998, at 9:10 o'clock A.M. and is duly recorded.

Bill Meek, Register of Deeds  
Linda Kizzia, Deputy



# 1703597

**BAUGHMAN COMPANY P.A.**  
ENGINEERING, SURVEYING, & PLANNING  
(316) 282-7271 • 316 ELLIS • WICHITA, KANSAS 67211  
PROJECT NO. 87-02-2715

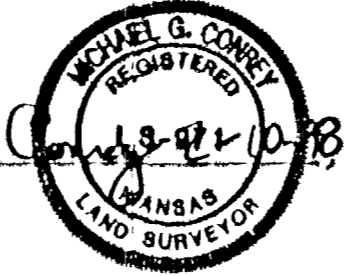
State of Kansas) SS We, Baughman Company, P.A. Surveyors in aforesaid County and State do hereby certify that we have surveyed and platted "MESSIAH BAPTIST CHURCH 4TH ADDITION", Sedgwick County, Kansas, and that the accompanying plat is a true and correct exhibit of the property surveyed, described as follows:

The West 40 acres of the Southwest Quarter of the Southeast Quarter of Section 3, Township 27 South, Range 2 East of the Sixth Principal Meridian, Sedgwick County, Kansas, EXCEPT that part condemned in Case 87C-143A.

Existing public easements and dedications being vacated by virtue of K.S.A. 12-512(b).

Baughman Company, P.A.

Michael G. Conrey, Surveyor



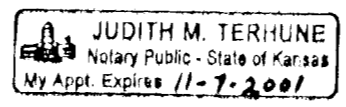
Know all men by these presents that we, the undersigned, have caused the land in the surveyors certificate to be platted into a Lot and a Block to be known as "MESSIAH BAPTIST CHURCH 4TH ADDITION", Sedgwick County, Kansas. The utility easements are hereby granted as indicated for the construction and maintenance of all public utilities. All abutters rights of access to or from 21st Street North over and across the south line of Lot 1, Block A, are hereby granted to the appropriate governing body provided, however, that said Lot 1 shall have access to 21st Street North at three locations over all except the west 289 feet of said south line as shall be determined by the Engineer for the appropriate governing body.

Messiah Baptist Church, Inc.

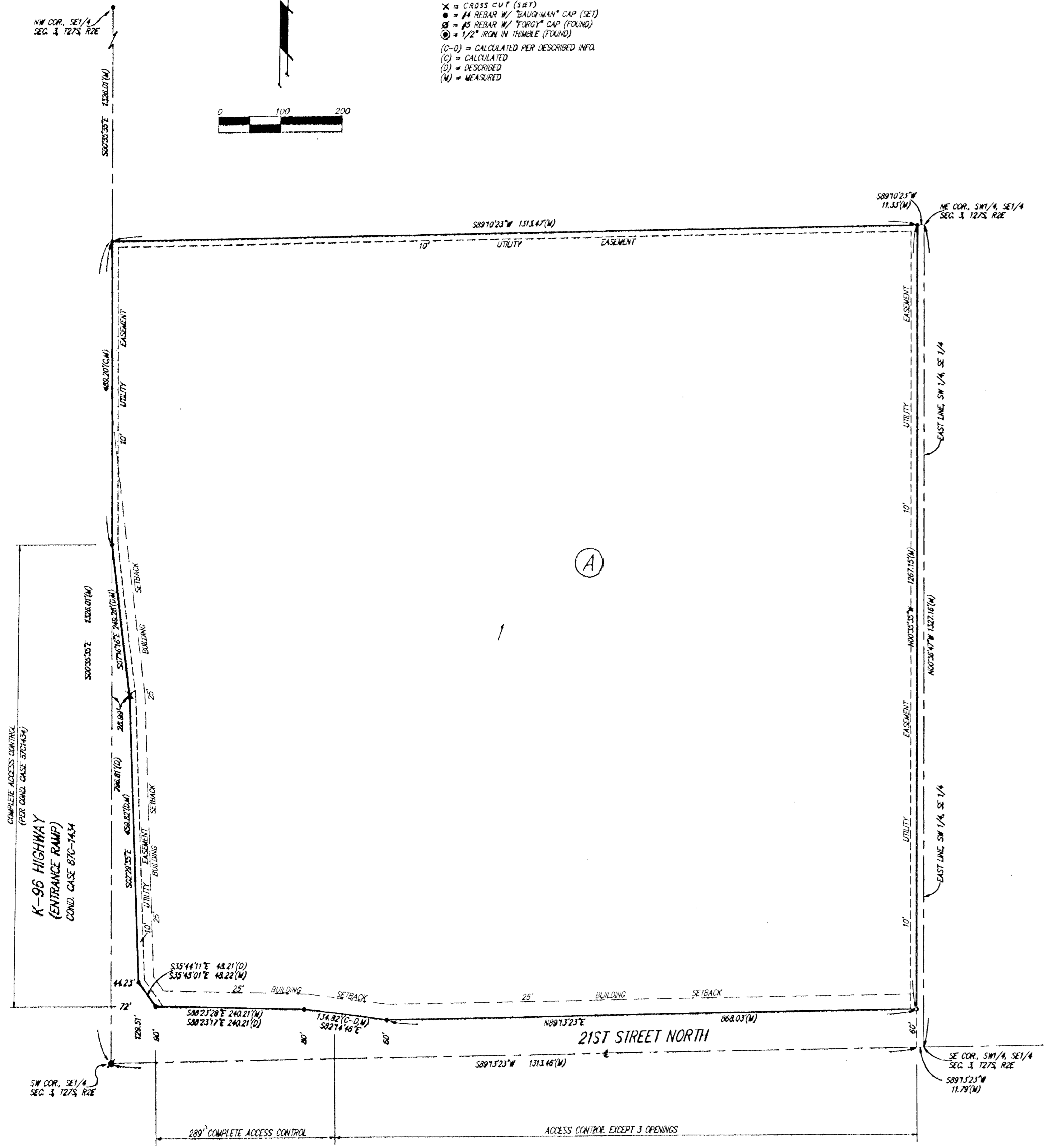
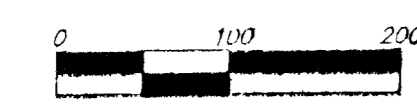
Willard R. Wolf, President

State of Kansas) SS The foregoing instrument acknowledged before me, this 21<sup>st</sup> day of January, 1998, by Willard R. Wolf, President of Messiah Baptist Church, Inc. on behalf of the coparties.

My App't. Exp. 11-7-2001  
Judith M. Terhune, Notary Public



**LEGEND:**  
X = CROSS CUT (SRT)  
• = #4 REBAR W/ "BAUGHMAN" CAP (SET)  
○ = #5 REBAR W/ "TERRY" CAP (FOUND)  
⊙ = 1/2" IRON IN TRIMBLE (FOUND)  
(C-D) = CALCULATED PER DESCRIBED INFO  
(C) = CALCULATED  
(D) = DESCRIBED  
(M) = MEASURED



MESSIAH BAPTIST CHURCH 4TH ADDITION