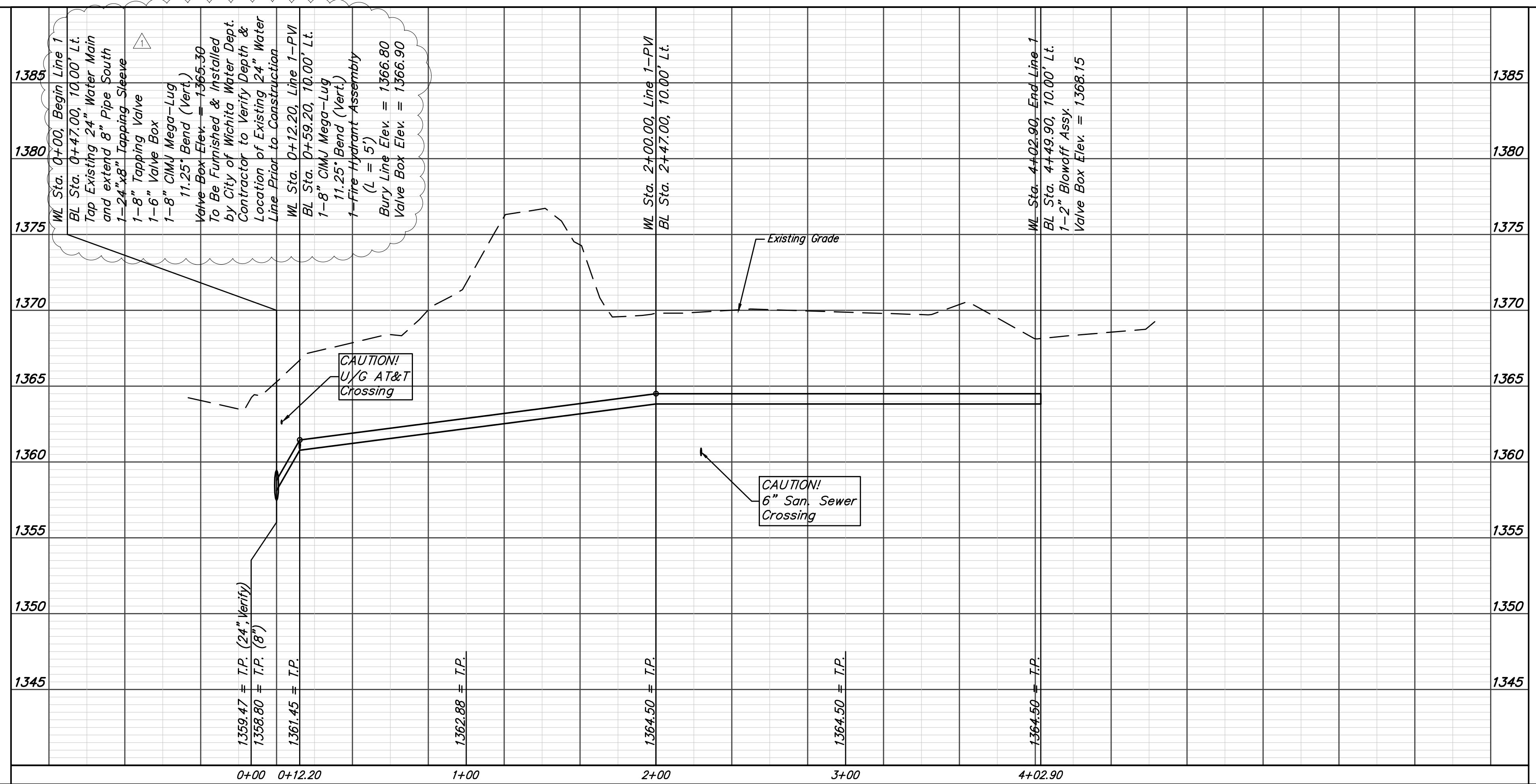
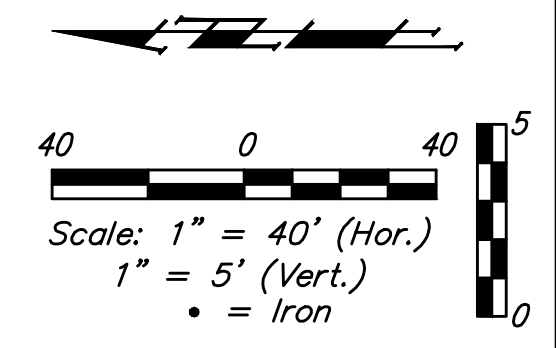
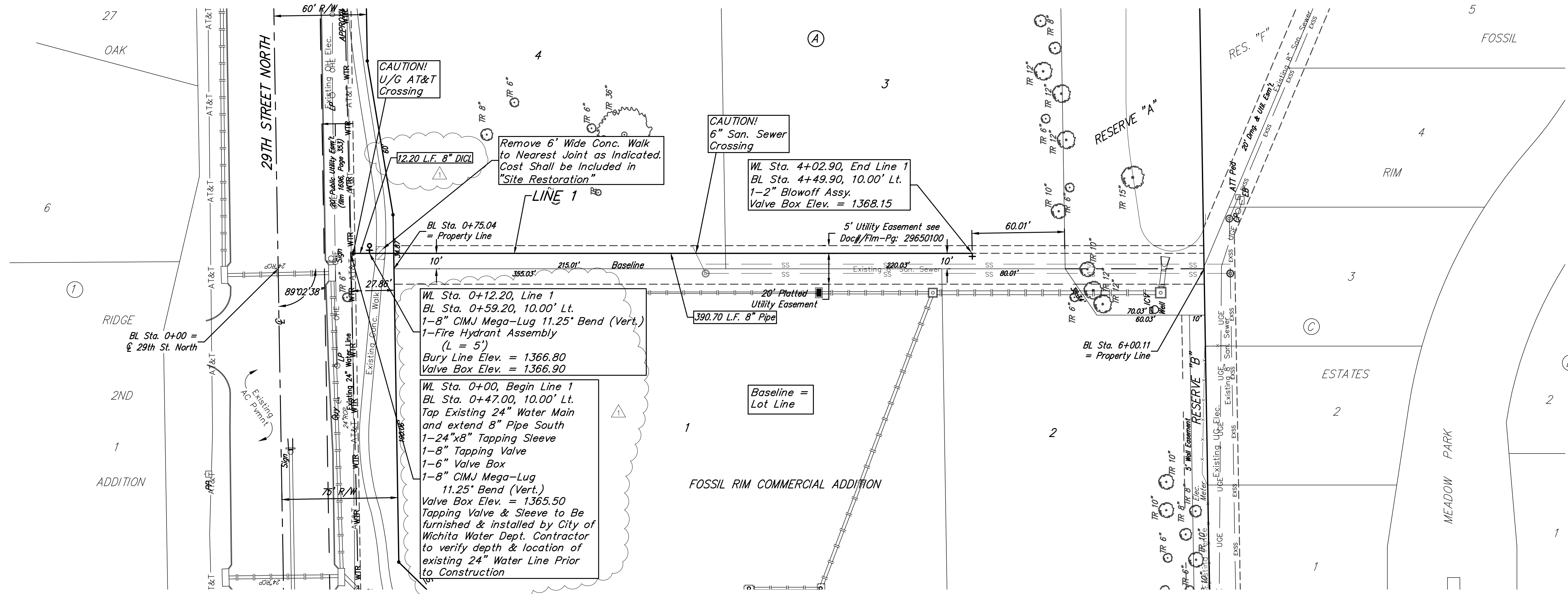


BENCHMARKS:
 Square cut on top of curb at the southwest corner of parking lot at the northeast corner of 29th and Tyler ELEV. = 1364.47 NAVD88

Chiseled "+" on sidewalk in the northwest corner Reserve "G", Fossil Rim Estates Elev. = 1367.20 NAVD88



FIRE HYDRANTS REQUIRED				
STATION	BURY LINE ELEVATION	TOP OF PIPE ELEVATION	FIRE HYDRANT BURY REQUIRED*	VALVE STEM EXT. REQUIRED (ft)*
0+12.20	1366.80	1361.45	6'	-

Baughman Fossil Rim Commercial Addition
LINE 1
 Water Distribution System

Baughman Company, P.A. 315 Ellis St. Wichita, KS 67211 P 316-262-7271 F 316-262-0149
 ENGINEERING | SURVEYING | PLANNING | LANDSCAPE ARCHITECTURE

PROJECT NUMBER 448-90751	DESIGN PAT	DRAWN JAK
REVISIONS: 1-24-17 Added 2" Vert. Bend, DICT. from 0-00 to 12-20.	APPROVED psb	DATE 10/12/16
SCALE Noted		SHEET 4 OF 12

E:\Projects\Fossil Rim Commercial Addition_16-01-P164\Engineering\Phase 1\WTR PLANS.dwg

