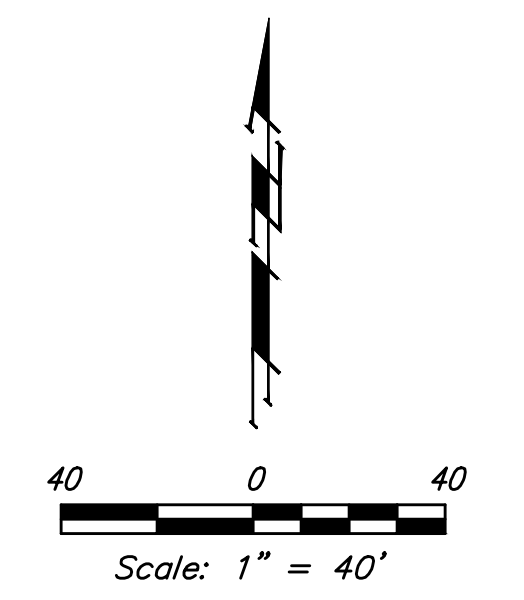
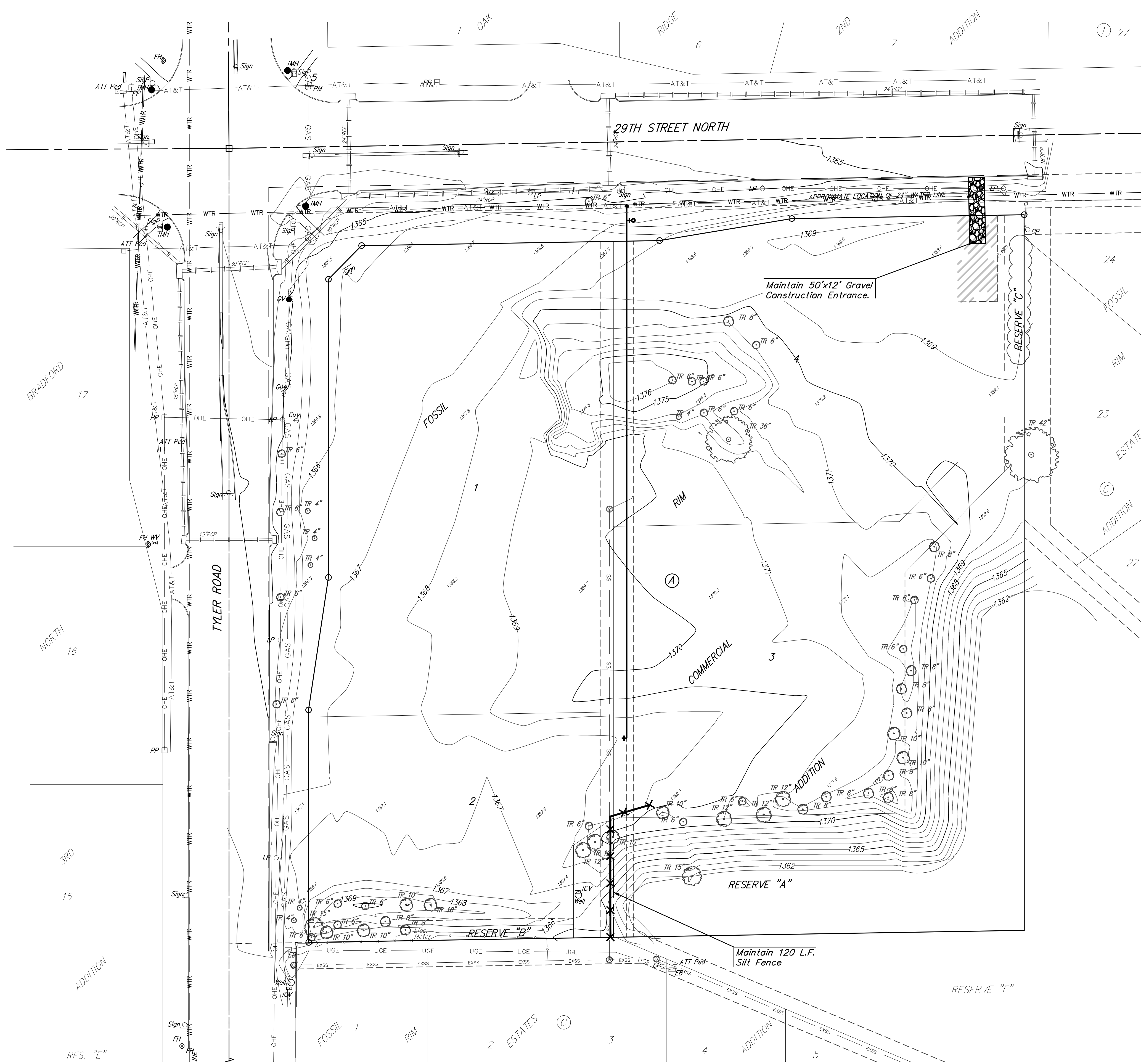


BENCHMARKS:
 Square cut on top of curb at the southwest corner of parking lot at the northeast corner of 29th and Tyler
 Elev. = 1364.47 NAVD88

Chiseled "+" on sidewalk in the northwest corner Reserve "C", Fossil Rim Estates
 Elev. = 1367.20 NAVD88



Existing Ground Contours — 1364 —

NOTES:
 Contractor shall make sure all erosion control is in place before project is accepted. This plan represents the minimum standard. Any additional erosion control measures shall be installed by the Contractor as needed.

All areas disturbed during construction shall be seeded, mulched, and fertilized as per Cover Sheet General Notes.

EROSION CONTROL PLAN LEGEND

- CONSTRUCTION ENTRANCE
- SILT FENCING

EROSION CONTROL MEASURE	INSTALL	MAINTAIN
CUTT-OFF TRENCH (LF)	0	0
CONSTRUCTION ENTRANCE (EA)	0	1
CURB INLET BARRIER (EA)	0	0
DITCH CHECK (EA)	0	0
DROP INLET PROTECTION (EA)	8	0
EROSION CONTROL (LS)	0	0
MULCH WATTLES (LF)	0	0
SILT FENCE (LF)	0	120
EROSION CONTROL MAT (SY)	0	0
MAINTAIN EROSION CONTROL BMP's (LS)	0	1

* ALL EXISTING BMPs INCLUDING CONSTRUCTION ENTRANCE, SEDIMENT BARRIERS, SILT FENCE, CUT-OFF TRENCH, AND EROSION CONTROL MAT SHALL BE MAINTAINED AND REPAIRED IF NECESSARY.

Fossil Rim Commercial Addition
EROSION CONTROL
 Water Distribution System

Baughman Company, P.A. 315 Ellis St. Wichita, KS 67211 P 316-262-7271 F 316-262-0149
 ENGINEERING | SURVEYING | PLANNING | LANDSCAPE ARCHITECTURE

PROJECT NUMBER
448-90751

DESIGN
PAT

REVISIONS:

DRAWN
JAK

DATE
10/12/16

SCALE
Noted

SHEET

5 OF 12

