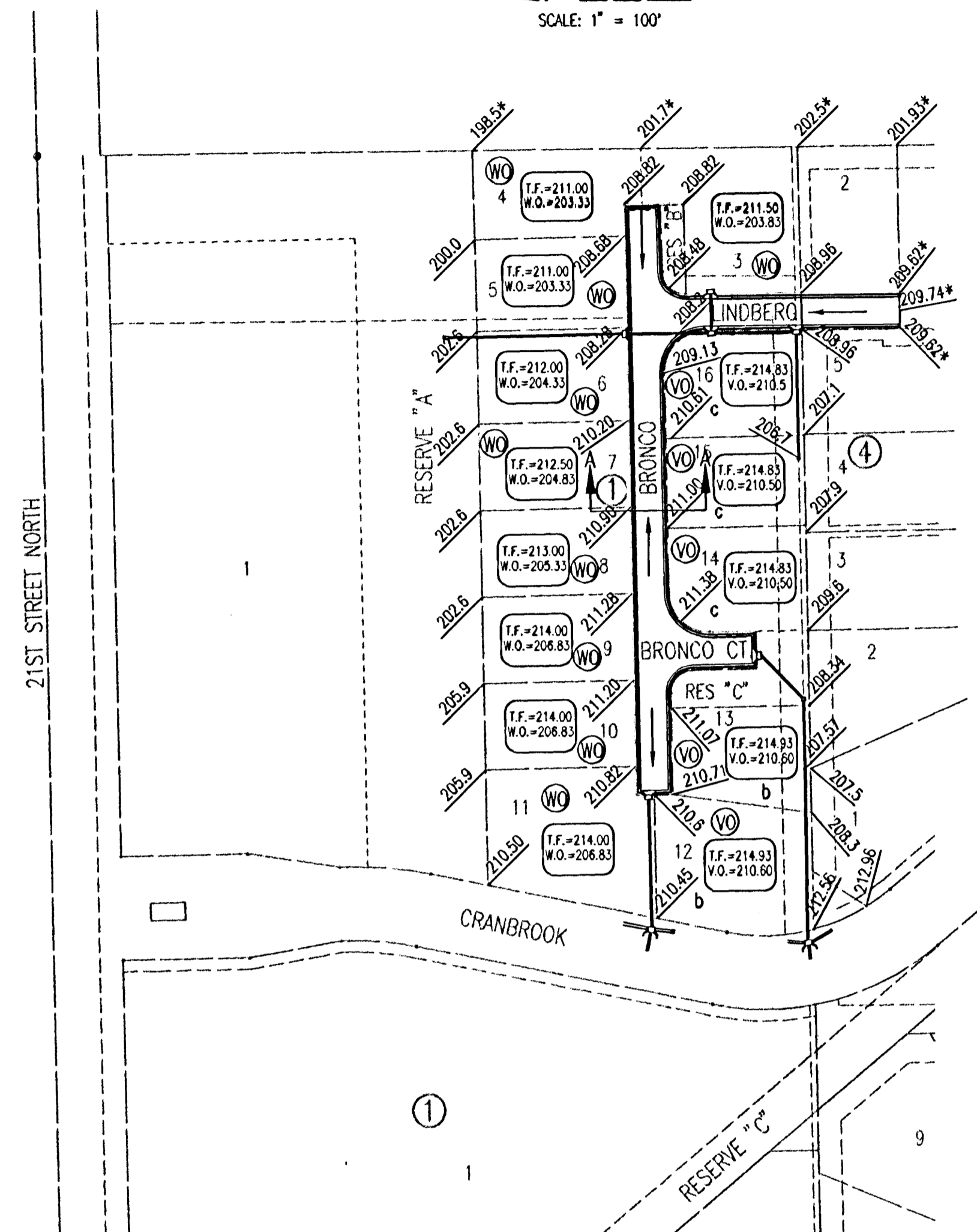


# REMINGTON PLACE 2ND

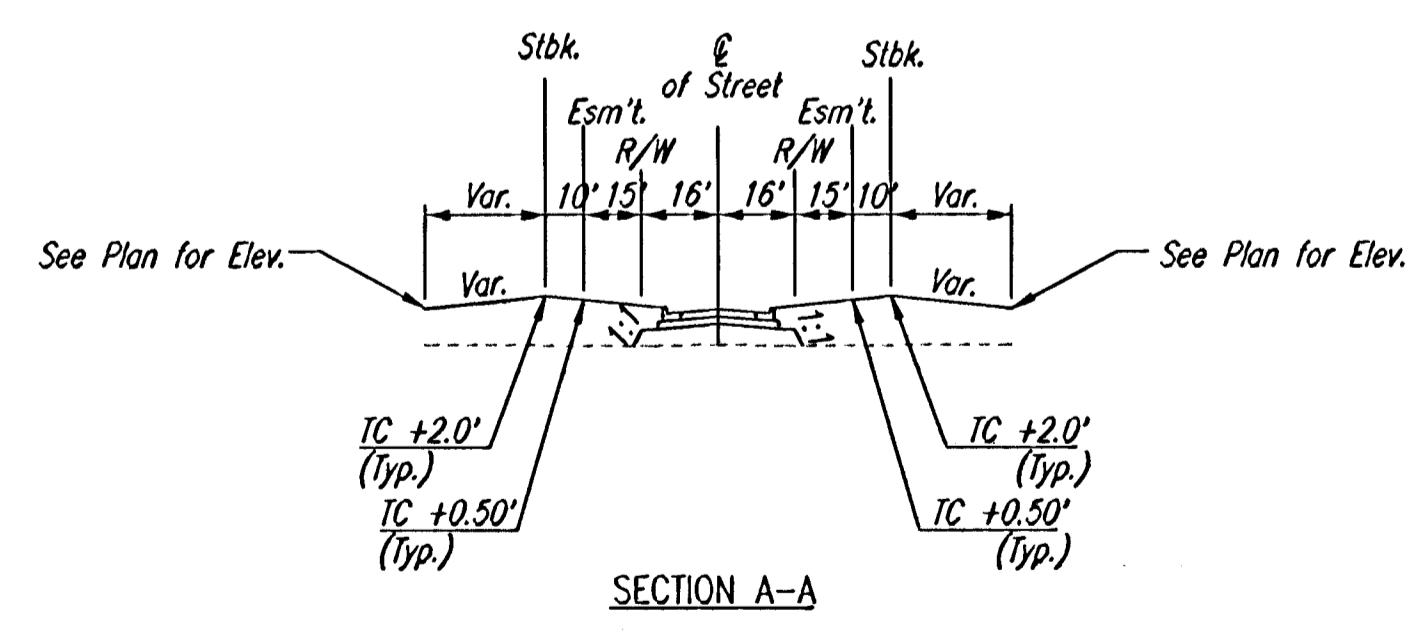
AN ADDITION TO WICHITA, SEDGWICK COUNTY, KANSAS

SCALE: 1" = 100'



- a MINIMUM OPENING= 203.5
- b MINIMUM OPENING= 210.6
- c MINIMUM OPENING= 210.5
- d MINIMUM OPENING= 208.7
- f MINIMUM OPENING= 207.5

- (X) STD. BASEMENT
- (VO) VIEW-OUT BASEMENT
- (WC) WALK-OUT BASEMENT
- \* MATCH EXISTING



*Neil D. Cable* 24 APR 03  
**RECORD DRAWING**

DSNR: BER OPER: ILS SCALE: 1"=100.00  
 C:\2002\02662\000\4CORNER 03-04-2003 11:29:51 am

	Revision No. _____ By _____ Date _____
	CITY OF WICHITA, KANSAS NEIL D. CABLE P.E. - CITY ENGINEER
	<b>FOUR CORNER LOT GRADING</b> CITY OF WICHITA PROJECT NO. 472-83678
	<b>Professional Engineering Consultants, P.A.</b> 303 S. TOPEKA • WICHITA, KANSAS 67202 316-262-2691 • FAX 316-262-3003
Designed by BER, JUD Drawn by SAW	Job No. 35-02662 Date January 2003
Sht. 12 of 17	