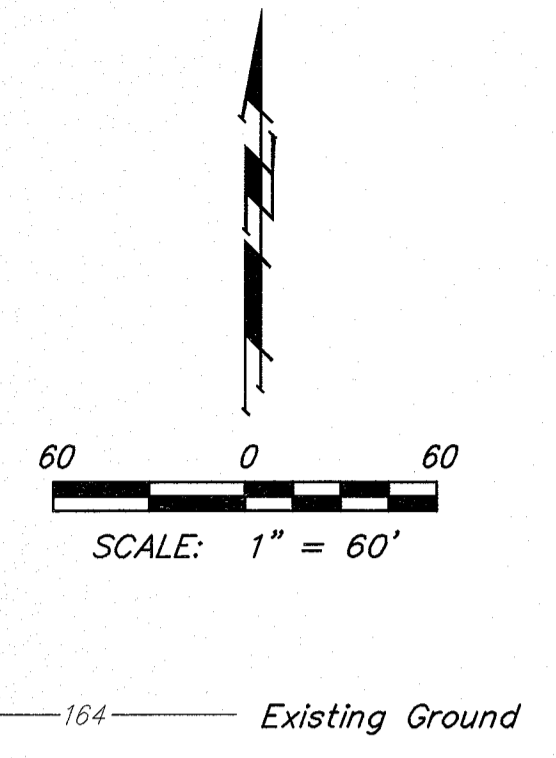
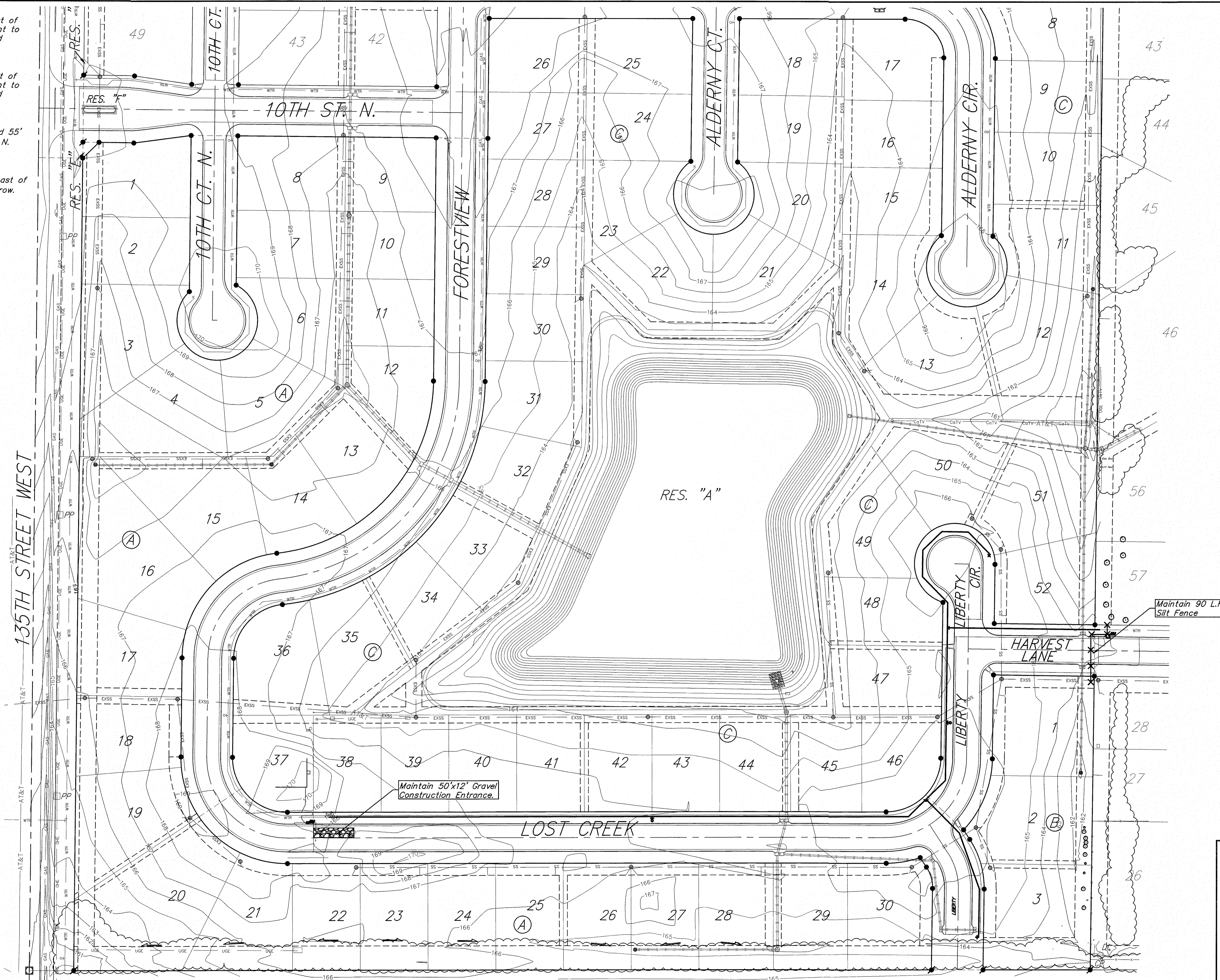


**BENCHMARKS:**  
 "□" Cut in top of curb 10' west of end of existing pavement adjacent to Lot 37, Block C, Liberty Park 3rd Addition  
 Elev. = 168.20 (City Datum)  
 "□" Cut in top of curb 10' east of end of existing pavement adjacent to Lot 52, Block C, Liberty Park 3rd Addition  
 Elev. = 164.21 (City Datum)  
 C.O.W. Benchmark Disk, 56' E and 55' N of 135th St. W. & 13th St. N.  
 Elev. = 167.83 (City Datum)  
 C.O.W. Benchmark Disk, 1/2 mile south of 13th St. 39' east of 135th St. 18' south of hedge row.  
 Elev. = 159.71 (City Datum)



<b>B</b> Baughman		Liberty Park 3rd Addition - Phase 2C <b>EROSION CONTROL</b> Water Distribution System	
Baughman Company, P.A., 315 Ellis St., Wichita, KS 67211, P 316-862-7271, F 316-862-0149 ENGINEERING   SURVEYING   PLANNING   LANDSCAPE ARCHITECTURE			
PROJECT NUMBER 448-90622	DESIGN NBW	DRAWN JAK	
REVISIONS:	APPROVED	DATE 12/27/16	
	SCALE Noted		
	SHEET	<b>6 OF 13</b>	