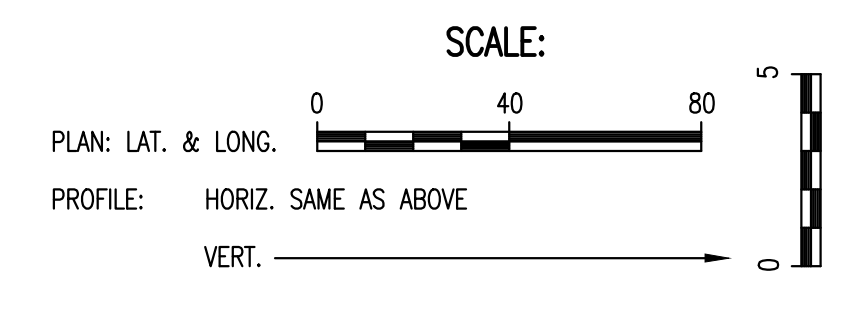
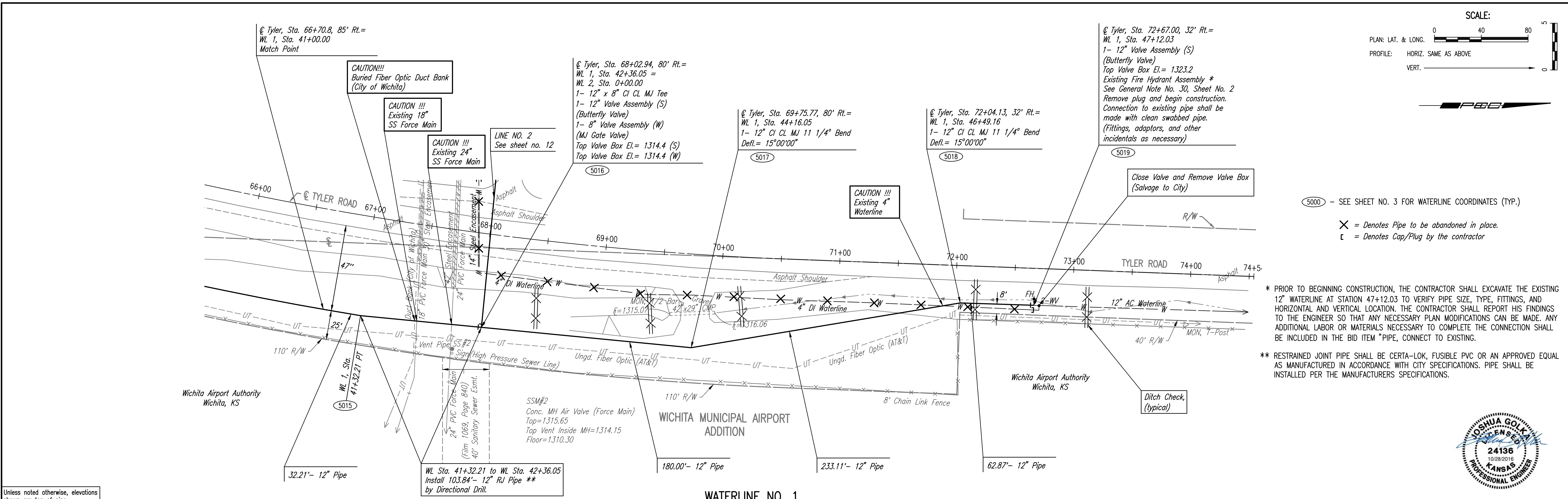


PLAN	CHECKED	DATE
	CHECKED	

PROFILE	CHECKED	DATE
	CHECKED	

Saved 10-28-2016 1:50:19 PM by TDS
 Plot Scale 1:1 10-28-2016 1:55:36 PM by TDS
 U:\Wichita-Civil\2015\15961\000\Drawings\15961-000-C11-WATERLINE NO. 1

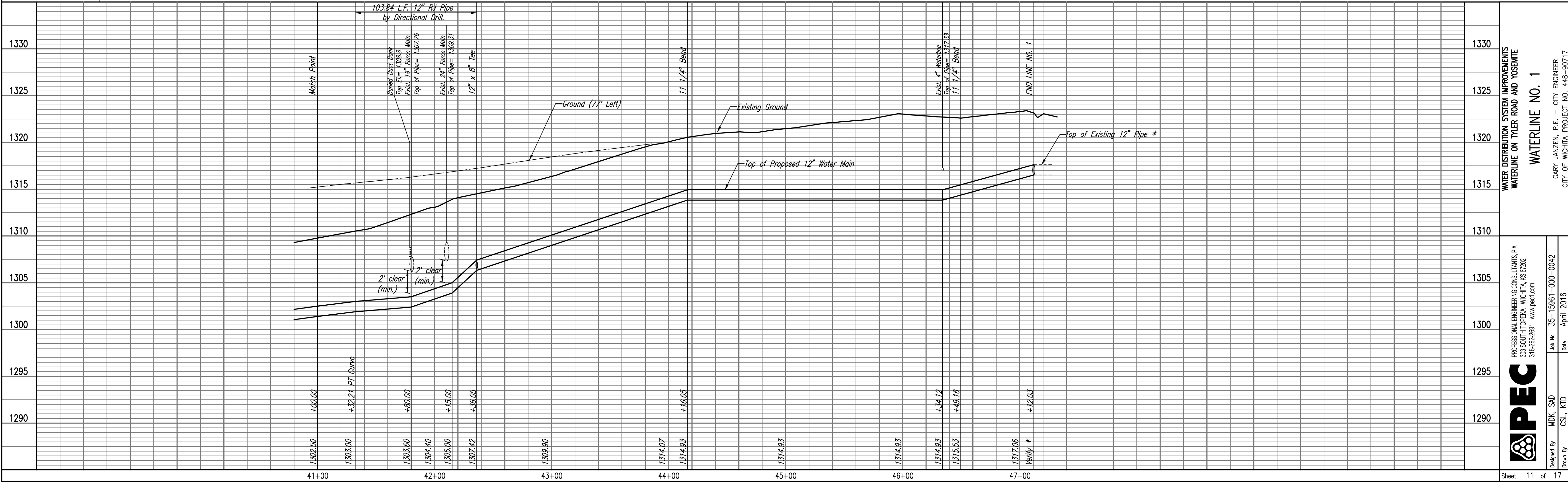


- * PRIOR TO BEGINNING CONSTRUCTION, THE CONTRACTOR SHALL EXCAVATE THE EXISTING 12" WATERLINE AT STATION 47+12.03 TO VERIFY PIPE SIZE, TYPE, FITTINGS, AND HORIZONTAL AND VERTICAL LOCATION. THE CONTRACTOR SHALL REPORT HIS FINDINGS TO THE ENGINEER SO THAT ANY NECESSARY PLAN MODIFICATIONS CAN BE MADE. ANY ADDITIONAL LABOR OR MATERIALS NECESSARY TO COMPLETE THE CONNECTION SHALL BE INCLUDED IN THE BID ITEM "PIPE, CONNECT TO EXISTING."
- ** RESTRAINED JOINT PIPE SHALL BE CERTA-LOK, FUSIBLE PVC OR AN APPROVED EQUAL AS MANUFACTURED IN ACCORDANCE WITH CITY SPECIFICATIONS. PIPE SHALL BE INSTALLED PER THE MANUFACTURERS SPECIFICATIONS.



Unless noted otherwise, elevations shown are top of pipe

WATERLINE NO. 1



PROFESSIONAL ENGINEERING CONSULTANTS P.A.
 303 SOUTH TOPEKA WICHITA, KS 67202
 316-262-2691 www.pec1.com
 Designed By: MDK, SAD
 Drawn By: CSL, KTD
 Job No. 35-15961-000-0042
 Date April 2016
 WATERLINE NO. 1
 WATER DISTRIBUTION SYSTEM IMPROVEMENTS
 WATERLINE ON TYLER ROAD AND YOSEMITE
 GARY JANZEN, P.E. - CITY ENGINEER
 CITY OF WICHITA PROJECT NO. 448-90717
 Sheet 11 of 17