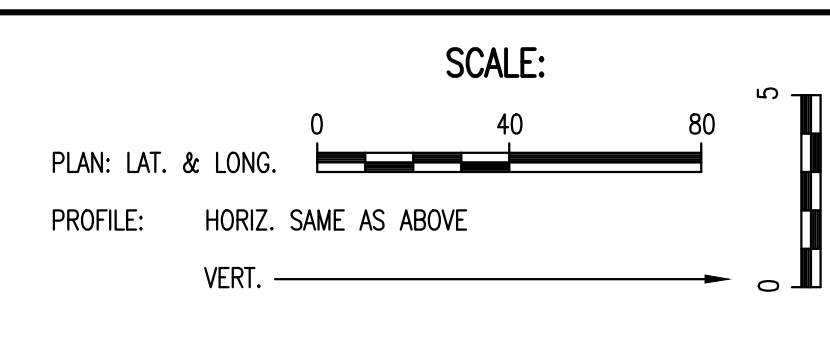
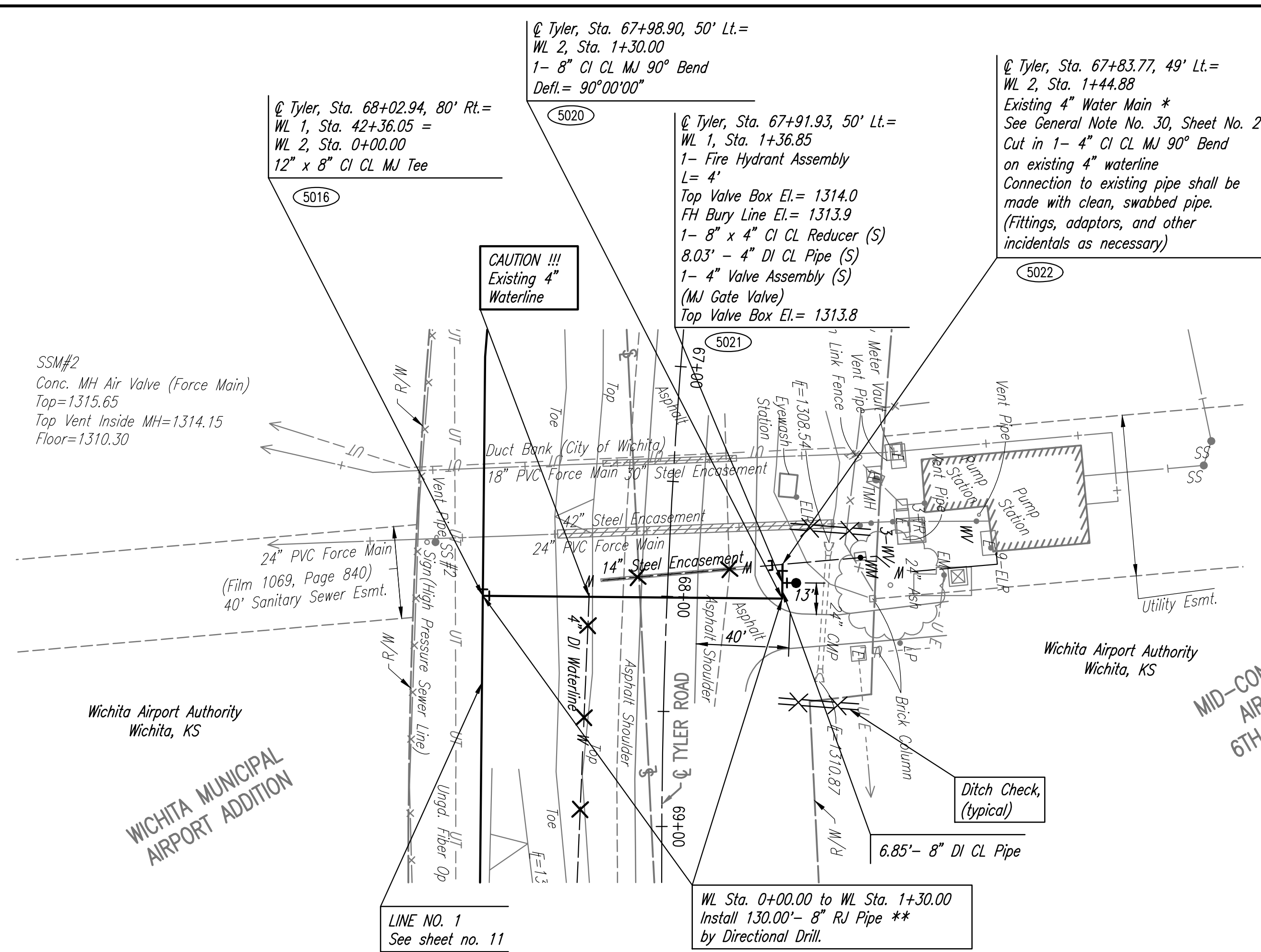


PLAN	CHECKED	DATE
	CHECKED	

PROFILE	CHECKED	DATE
	CHECKED	

Saved: 10-28-2016 1:50:11 PM by TDS
 Plot Scale: 1:1 10-28-2016 1:55:42 PM
 U:\Wichita-Civil\2015\15961\000\Drawings\15961-000-C12-WATERLINE NO. 2

Unless noted otherwise, elevations shown are top of pipe



5000 - SEE SHEET NO. 3 FOR WATERLINE COORDINATES (TYP.)

X = Denotes Pipe to be abandoned in place.
 □ = Denotes Cap/Plug by the contractor

* PRIOR TO BEGINNING CONSTRUCTION, THE CONTRACTOR SHALL EXCAVATE THE EXISTING 4" WATERLINE AT STATION 1+44.88 TO VERIFY PIPE SIZE, TYPE, FITTINGS, AND HORIZONTAL AND VERTICAL LOCATION. THE CONTRACTOR SHALL REPORT HIS FINDINGS TO THE ENGINEER SO THAT ANY NECESSARY PLAN MODIFICATIONS CAN BE MADE. ANY ADDITIONAL LABOR OR MATERIALS NECESSARY TO COMPLETE THE CONNECTION SHALL BE INCLUDED IN THE BID ITEM "PIPE, CONNECT TO EXISTING.

** RESTRAINED JOINT PIPE SHALL BE CERTA-LOK, FUSIBLE PVC OR AN APPROVED EQUAL AS MANUFACTURED IN ACCORDANCE WITH CITY SPECIFICATIONS. PIPE SHALL BE INSTALLED PER THE MANUFACTURERS SPECIFICATIONS.



WATER DISTRIBUTION SYSTEM IMPROVEMENTS
 WATERLINE ON TYLER ROAD AND YOSEMITE
 WATERLINE NO. 2
 GARY JANZEN, P.E. - CITY ENGINEER
 CITY OF WICHITA PROJECT NO. 448-90717

PROFESSIONAL ENGINEERING CONSULTANTS P.A.
 303 SOUTH TOPEKA WICHITA, KS 67202
 316-262-2691 www.pec1.com
 DESIGNED BY: MDK, SAD
 DRAWN BY: CSL, KTD
 Job No. 35-15961-000-0042
 Date April 2016