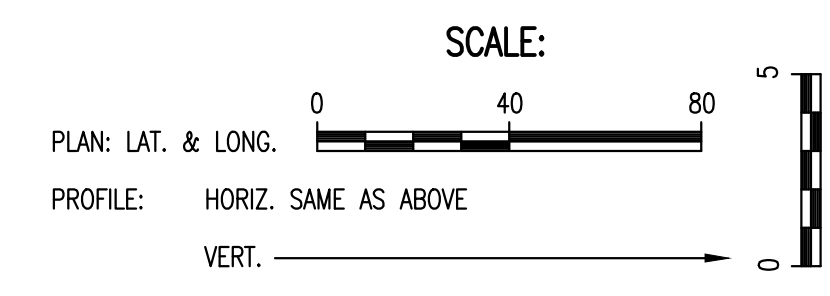
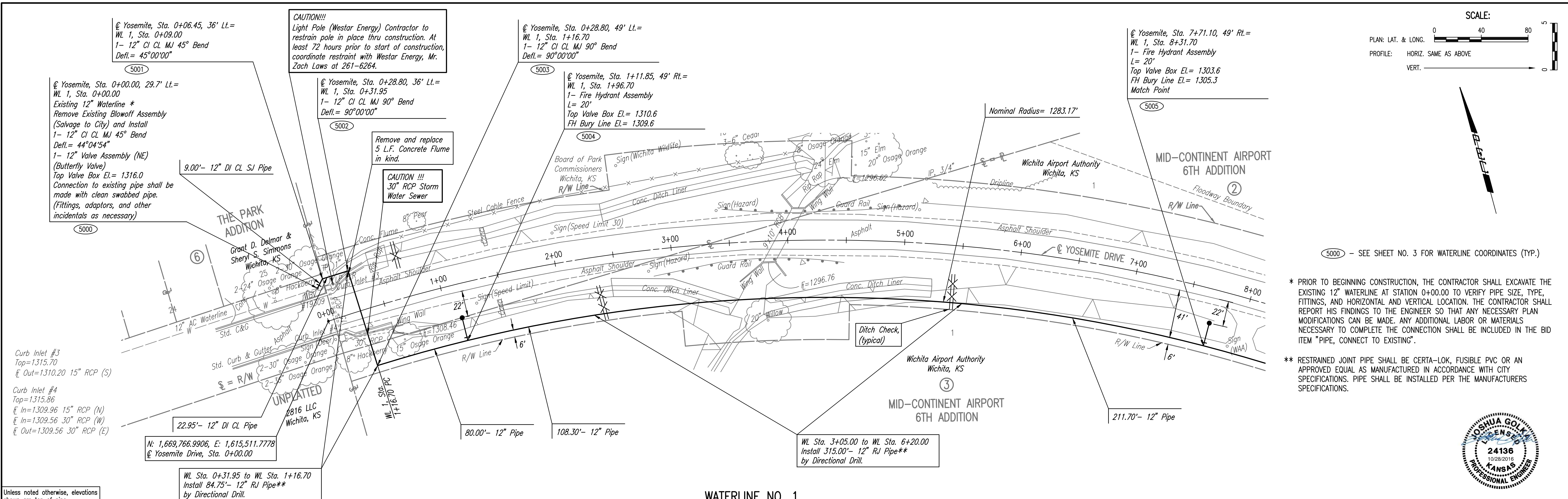


PLAN	CHECKED	DATE
	CHECKED	

PROFILE	CHECKED	DATE
	CHECKED	

Saved: 10-27-2016 5:08:24 PM by TDS
 Plot Scale: 1" = 10'-0" (Horizontal) 1" = 3.317' (Vertical)
 U:\Wichita-Civil\2015\15961\000\Drawings\15961-000-006-WATERLINE NO. 1



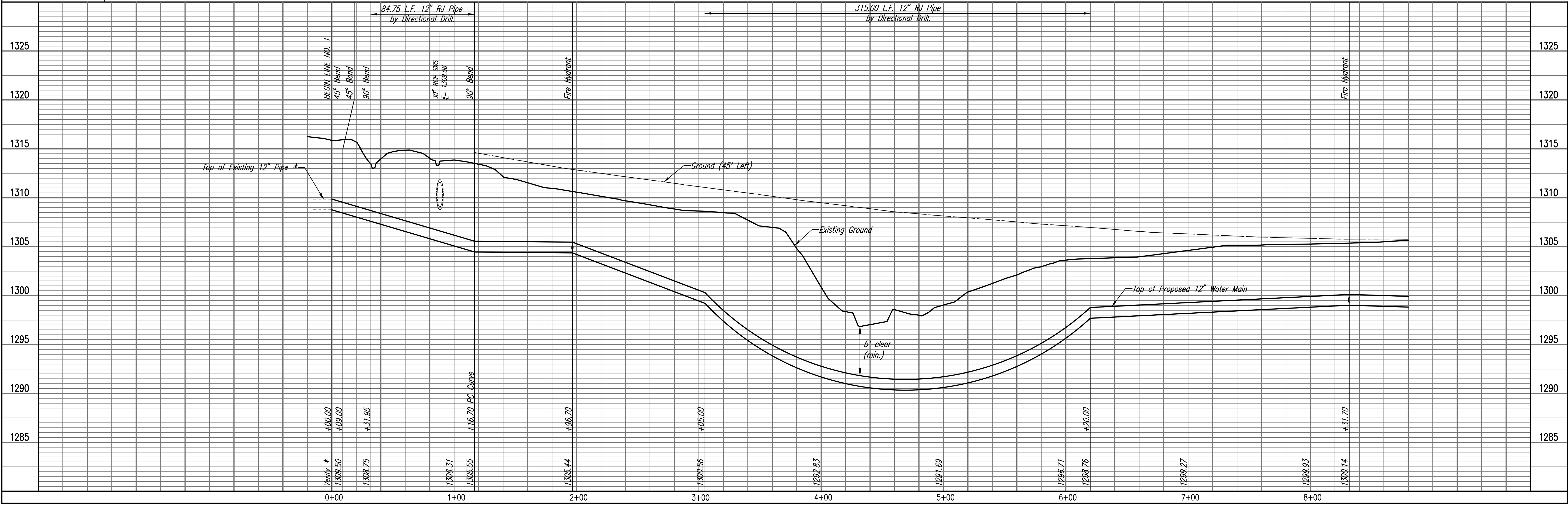
5000 - SEE SHEET NO. 3 FOR WATERLINE COORDINATES (TYP.)

* PRIOR TO BEGINNING CONSTRUCTION, THE CONTRACTOR SHALL EXCAVATE THE EXISTING 12" WATERLINE AT STATION 0+00.00 TO VERIFY PIPE SIZE, TYPE, FITTINGS, AND HORIZONTAL AND VERTICAL LOCATION. THE CONTRACTOR SHALL REPORT HIS FINDINGS TO THE ENGINEER SO THAT ANY NECESSARY PLAN MODIFICATIONS CAN BE MADE. ANY ADDITIONAL LABOR OR MATERIALS NECESSARY TO COMPLETE THE CONNECTION SHALL BE INCLUDED IN THE BID ITEM "PIPE, CONNECT TO EXISTING".

** RESTRAINED JOINT PIPE SHALL BE CERTA-LOK, FUSIBLE PVC OR AN APPROVED EQUAL AS MANUFACTURED IN ACCORDANCE WITH CITY SPECIFICATIONS. PIPE SHALL BE INSTALLED PER THE MANUFACTURERS SPECIFICATIONS.



WATERLINE NO. 1



WATER DISTRIBUTION SYSTEM IMPROVEMENTS
 WATERLINE ON TYLER ROAD AND YOSEMITE
 WATERLINE NO. 1
 GARY JANZEN, P.E. - CITY ENGINEER
 CITY OF WICHITA PROJECT NO. 448-90717

PROFESSIONAL ENGINEERING CONSULTANTS P.A.
 303 SOUTH TOPEKA WICHITA, KS 67202
 316-262-2691 www.pec1.com
PEC
 Job No. 35-15961-000-0042 Date April 2016
 Designed By MDK, SAD
 Drawn By CSL, KTD