

CITY OF WICHITA, KANSAS
NEIL D. CABLE, P.E., CITY ENGINEER

PAVING AND STORM WATER DRAIN
IMPROVEMENTS

THE EXTENSION OF A LEFT-TURN LANE ON WEBB ROAD AND
THE ADDITION OF A LEFT-TURN LANE ON WILSON ESTATES PARKWAY
IN

WILSON ESTATES MEDICAL PARK

CITY OF WICHITA PROJECT NO. 472-83676
OCA NO. 765766

INDEX OF SHEETS

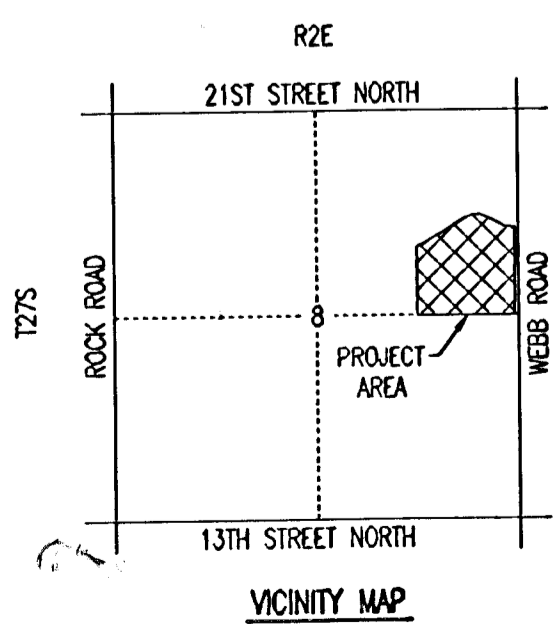
1. TITLE SHEET
2. PLAT
3. TYPICAL SECTION
- 4.-6. PAVING PLAN
7. VALLEY GUTTER DETAILS
8. MISCELLANEOUS PAVING DETAILS
9. WILSON ESTATES PARKWAY ENTRANCE DETAILS
10. MANHOLE FRAME AND COVER
11. REINFORCED CONCRETE MANHOLE
12. STANDARD TYPE I CURB INLET OPENING
13. PAVEMENT MARKING PLAN
14. SIGNING DETAILS
- 15.-18. EROSION CONTROL
- 19.-23. CROSS SECTIONS

PROJECT SURVEY CONTROL

- BM (LP-2): CHISELED "d" CENTER OF FRONT FACE OF CURB INLET ON WEST SIDE OF WEBB ROAD, NORTH OF 19TH STREET NORTH. ELEV.=196.49 CITY DATUM
- BM (LP-4): "I" POST 10' NORTH OF P.T. IRON NORTH R/W WILSON ESTATES PARKWAY, 380± WEST OF C WEBB ROAD. ELEV.=201.35 CITY DATUM
- BM (LP-5): CHISELED "d" IN SOUTH TOP OF CURB OF WILSON ESTATES PARKWAY, 25' WEST OF END EXISTING CURB AND GUTTER AND 25' WEST OF TREE ROW. ELEV.=196.00 CITY DATUM

EROSION CONTROL (BMP'S)
THE CONTRACTOR SHALL INSTALL AND/OR MAINTAIN EROSION CONTROL METHODS. THE FOLLOWING QUANTITIES ARE ESTIMATED, AND SHOULD BE CONSIDERED THE MINIMUM EFFORT REQUIRED. INSTALLATION OF THESE BMP'S DOES NOT RELIEVE THE CONTRACTOR OF THE RESPONSIBILITY OF ABATING SOIL EROSION.

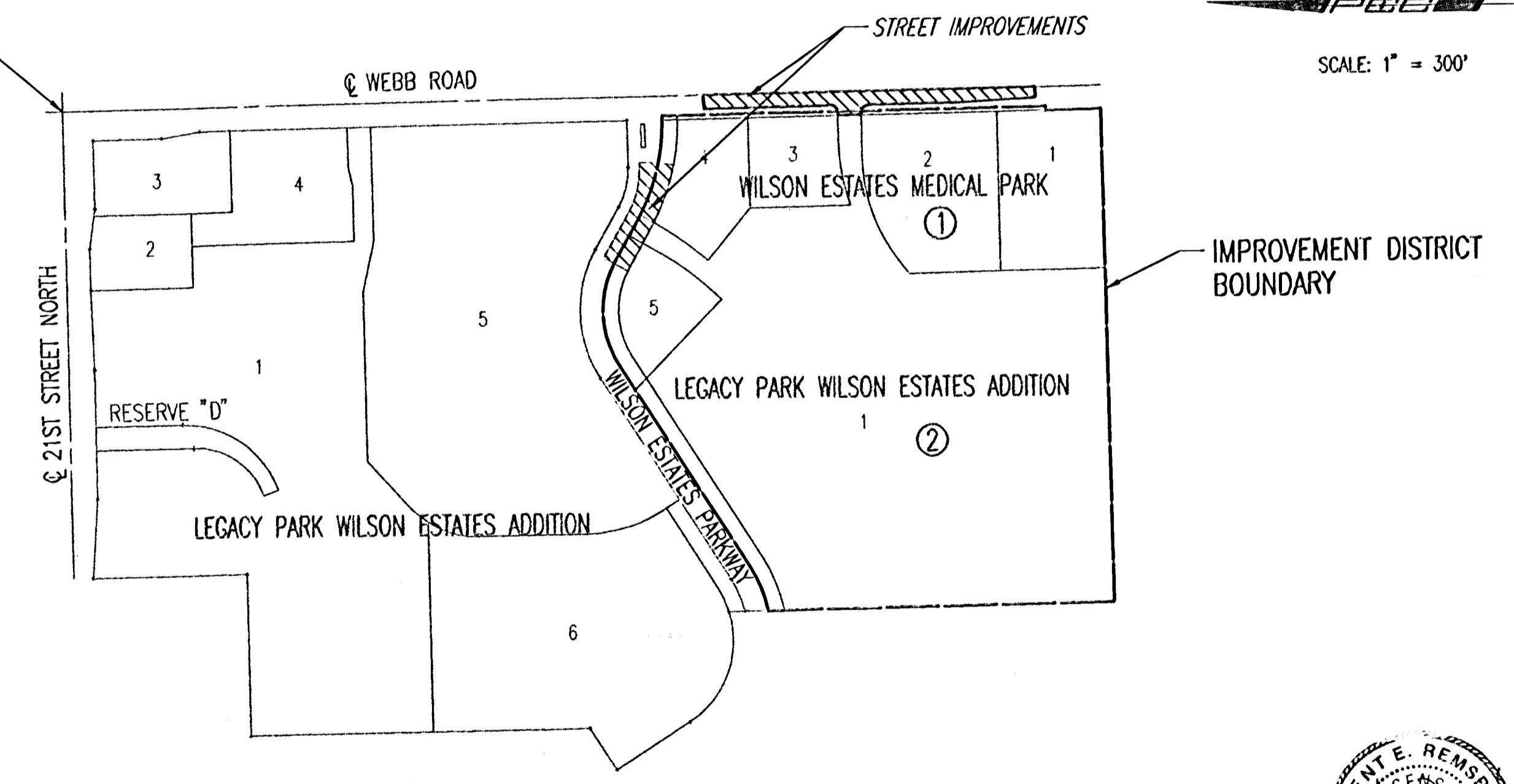
INLET PROTECTION	7 EACH
SILT FENCE BARRIER	300 L.F.
CONSTRUCTION ENTRANCE	1 EACH
BACK OF CURB PROTECTION	949 L.F.



EARTHWORK

EXCAVATION 1,159 CU. YDS.
COMPACTED FILL 0 CU. YDS.
PROJECT LENGTH = 1,129.8 LIN. FT.

N.E. Corner
Sec. 8, T27S, R2E
of the 6th P.M.
1/2" I.P. in Thimble



JANUARY, 2003

PLANS PREPARED BY

PROFESSIONAL ENGINEERING CONSULTANTS, P.A.
ENGINEERS
WICHITA, KANSAS

GENERAL NOTES

UNDERGROUND UTILITY SERVICE LINES AND OVERHEAD UTILITY POLE LINES ARE TO BE ADJUSTED AS NECESSARY BY OTHERS PRIOR TO CONSTRUCTION UNLESS THE PLANS SPECIFICALLY CALL FOR THEIR ADJUSTMENT BY THE CONTRACTOR. EXISTING UTILITIES AND THEIR LOCATION, AS SHOWN ON THE PLANS, REPRESENT THE BEST INFORMATION OBTAINABLE FOR DESIGN. LOCATION INFORMATION HAS BEEN OBTAINED FROM THE VARIOUS UTILITY COMPANIES AND IS EITHER FROM COMPANY RECORD DRAWINGS OR COMPANY PROVIDED FIELD LOCATIONS. THE CONTRACTOR WILL BE REQUIRED TO WORK AROUND EXISTING UTILITIES WITHIN THE RIGHT-OF-WAY WHICH DO NOT CONFLICT WITH PROPOSED CONSTRUCTION.

TREES AND SHRUBS IN PUBLIC RIGHT-OF-WAY WHICH ARE IN DIRECT CONFLICT WITH PROPOSED NEW CONSTRUCTION SHALL BE REMOVED BY THE CONTRACTOR WITH THE ENGINEER'S APPROVAL. TREES AND SHRUBS WHICH ARE NOT IN DIRECT CONFLICT WITH PROPOSED NEW CONSTRUCTION SHALL BE SAVED AND PROTECTED FROM DAMAGE.

RUBBLE FROM THE REMOVAL OF MISCELLANEOUS STRUCTURES SHALL BE DISPOSED OF ON SITES TO BE PROVIDED BY THE CONTRACTOR AND APPROVED AS NOTED BELOW.

ALL DISPOSAL SITES MUST BE APPROVED BY THE KANSAS DEPARTMENT OF HEALTH AND ENVIRONMENT. MATERIAL EITHER STOCKPILED OR DISPOSED OF IN A FLOOD PLAIN WOULD REQUIRE A KANSAS STATE BOARD OF AGRICULTURE PERMIT. ANY MATERIAL DUMPED IN WATERS OF THE UNITED STATES OR WETLANDS IS SUBJECT TO U.S. CORPS OF ENGINEERS PERMITTING REGULATIONS. ANY MATERIAL BURIED OR STOCKPILED BEYOND APPROVED CONSTRUCTION LIMITS WOULD REQUIRE ADDITIONAL ARCHEOLOGICAL INVESTIGATIONS UNLESS BURIED IN A PREVIOUSLY APPROVED BORROW LOCATION.

EXCESS EXCAVATION WHICH IS TO BE WASTED SHALL BE DISPOSED OF ON SITES PROVIDED BY THE CONTRACTOR. THESE SITES SHALL ALSO BE APPROVED OF BY THE ENGINEER AS TO SUITABILITY, APPEARANCE AND SITE LOCATION.

THE CONTRACTOR IS RESPONSIBLE FOR COORDINATING CONSTRUCTION WITH OTHER CONTRACTORS IN THE AREA. THIS COORDINATION SHALL CONSIST OF CONSTRUCTION SEQUENCE, TRAFFIC HANDLING AND ALLOWING ACCESS THROUGH WORK AREA TO ADJACENT PROPERTIES.

CONTRACTOR SHALL SATISFY HIMSELF OF SURFACE AND SUBSURFACE CONDITIONS PRIOR TO BIDDING.

TEMPORARY SURFACING MATERIAL (ROCK, ASPHALT, ETC.) MAY HAVE BEEN PLACED WITHIN STREET RIGHTS-OF-WAY FOR HAUL ROADS AND TEMPORARY ACCESS. CONTRACTOR SHALL FIELD VERIFY EXISTING CONDITIONS TO DETERMINE EXTENT, IF ANY, OF SUCH SURFACING. CONTRACTOR SHALL REMOVE SAID TEMPORARY SURFACING IN THE SAME MANNER AS NOTED ABOVE FOR RUBBLE. THIS REMOVAL SHALL BE SUBSIDIARY TO "EXCAVATION".

CONTRACTOR SHALL PROVIDE A MINIMUM FORTY-EIGHT (48) HOUR ADVANCE NOTICE (EXCLUDING WEEKENDS AND HOLIDAYS) PRIOR TO BEGINNING ANY EXCAVATION, TO KANSAS ONE-CALL SYSTEM, A UTILITY LOCATION SERVICE, AT (316) 687-2470 TO REQUEST THE FOLLOWING UTILITY COMPANIES TO LOCATE ALL EXISTING LINES WITHIN THE PROJECT AREA: K.G.S. GAS, K.G.E. ELECTRIC, SOUTHWESTERN BELL TELEPHONE, COX COMMUNICATIONS, CITY OF WICHITA SEWER MAINTENANCE AND CITY OF WICHITA WATER DEPARTMENT.

THE CONTRACTOR SHALL BE RESPONSIBLE FOR PRESERVING PROPERTY IRONS. THE CONTRACTOR WILL BE REQUIRED TO RE-ESTABLISH ANY PROPERTY IRONS WHICH ARE DAMAGED OR DESTROYED BY HIS CONSTRUCTION OPERATIONS. SUCH IRONS SHALL BE RE-ESTABLISHED BY A LICENSED LAND SURVEYOR IN ACCORDANCE WITH STATE LAWS.

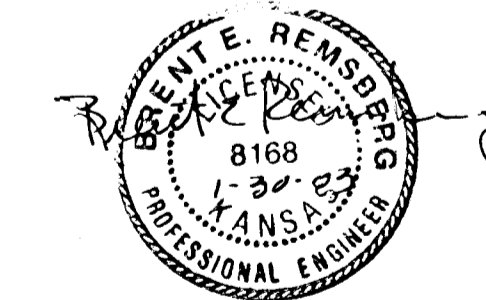
THE WATER DEPARTMENT SHALL FIELD LOCATE WATER VALVES ONE TIME DURING CONSTRUCTION WHEN REQUESTED BY THE CONTRACTOR. IT SHALL BE THE CONTRACTOR'S RESPONSIBILITY TO PRESERVE SUCH FIELD LOCATIONS DURING THE CONSTRUCTION PROCESS. WATER VALVES, WATER VALVE BOXES OR FIRE HYDRANTS DAMAGED DURING CONSTRUCTION SHALL BE REPAIRED BY THE CONTRACTOR AT HIS OWN EXPENSE.

THE CONTRACTOR SHALL ADJUST WATER VALVE BOXES AS DIRECTED BY THE ENGINEER. THIS WORK TO BE SUBSIDIARY TO OTHER BID ITEMS.

CONTRACTOR SHALL SOD ANY AREA DISTURBED OR DAMAGED FROM BACK OF CURB TO LIMITS OF CONSTRUCTION. THE SOD SHALL BE OF A LIKE VARIETY. IF POSSIBLE, THE EXISTING SOD MAY BE CAREFULLY REMOVED AND RESET AS APPROVED BY THE ENGINEER. THIS WORK SHALL BE PAID FOR AT THE LUMP SUM PRICE BID FOR "SITE RESTORATION".

CONTRACTOR SHALL BE RESPONSIBLE TO PROVIDE, ERECT AND MAINTAIN ALL TRAFFIC CONTROL DEVICES IN ACCORDANCE WITH THE "MANUAL ON UNIFORM TRAFFIC CONTROL DEVICES" (MUTCD) AS SPECIFIED IN THE "WORK ZONE TRAFFIC CONTROL" SECTION OF THE CITY OF WICHITA STANDARD SPECIFICATIONS.

THE BID ITEM "SITE CLEARING" SHALL INCLUDE THE REMOVAL AND PROPER DISPOSAL OF ALL PAVEMENT, SIDEWALK, CURB AND GUTTER, SWS PIPE, INLETS AND MISCELLANEOUS ITEMS SUCH AS SIGNS, POSTS, ETC. SHOWN TO BE REMOVED OR NECESSARY TO BE REMOVED TO FACILITATE CONSTRUCTION.



DSNR: DEP. OPER. S&D SCALE: 1"=300.00
Q:\2002\02621\Streets\standards\STRITILE 01-23-2003 04:18:11 pm