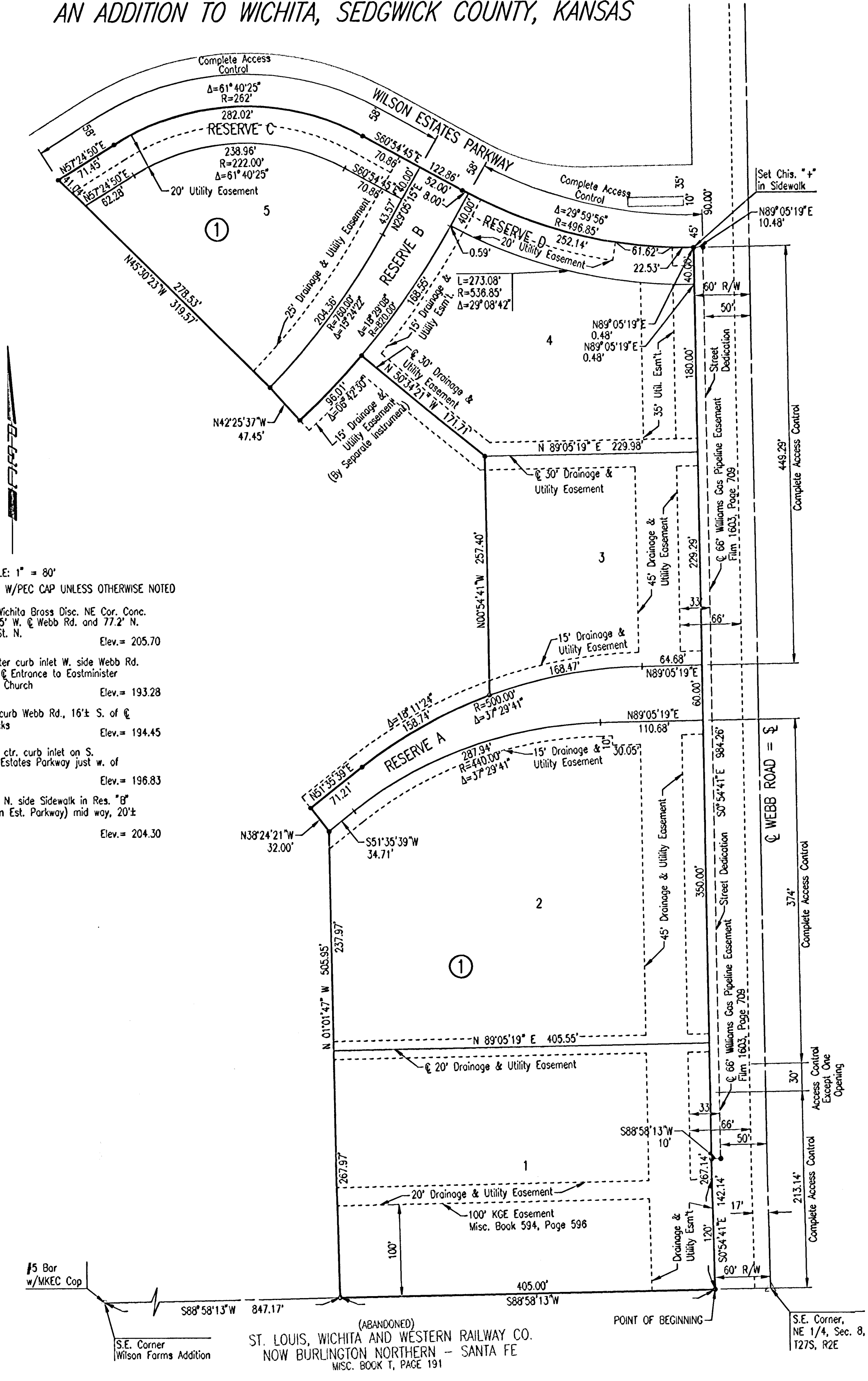


WILSON ESTATES MEDICAL PARK

AN ADDITION TO WICHITA, SEDGWICK COUNTY, KANSAS



- SCALE: 1" = 80'
- = 3/4" IRON PIPE W/PEC CAP UNLESS OTHERWISE NOTED
 - C.O.W. BM: City of Wichita Brass Disc, NE Cor. Conc. Vault 415' W. & Webb Rd. and 77.2' N. of 21st St. N. Elev. = 205.70
 - BM #1: "d" Top center curb inlet W. side Webb Rd. 66± N. of & Entrance to Eastminister Presbyterian Church Elev. = 193.28
 - BM #2: "d" Top W. curb Webb Rd., 16± S. of & of R.R. Tracks Elev. = 194.45
 - BM #3: Chiseled "d" ctr. curb inlet on S. side Wilson Estates Parkway just W. of Webb Rd. Elev. = 196.83
 - BM #5: Chiseled "d" N. side Sidewalk in Res. "B" (S. of Wilson Est. Parkway) mid way, 20± W. of P.C. Elev. = 204.30

DSNR: S40 OPER. S40 SCALE: 1"=80.00 01/2002 02621 Streets Standards PLAT 01-24-2003 03:47:12 pm

CITY OF WICHITA, KANSAS

PLAT

Professional Engineering Consultants, P.A.
303 S. TOPEKA • WICHITA, KANSAS 67202
316-262-2691 • FAX 316-262-3003

Designed by	RWM	Checked by	BER
Drawn by	GJR, SAW	Date	JANUARY 2003
		Job No.	02621