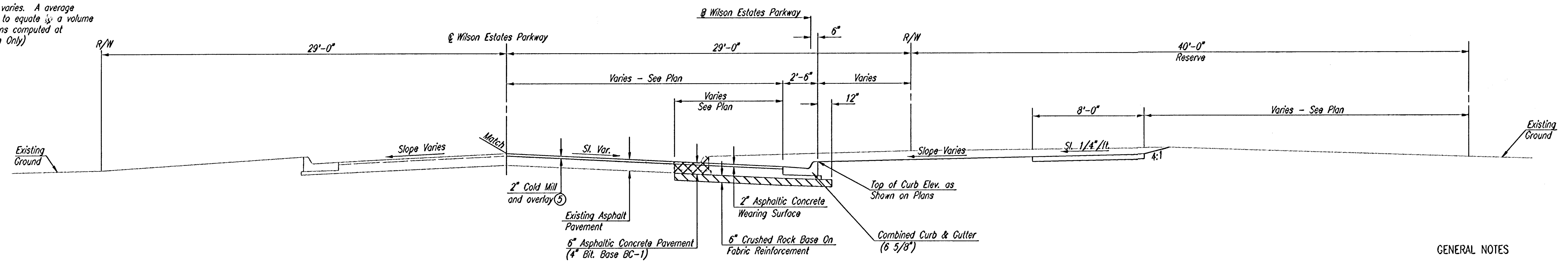
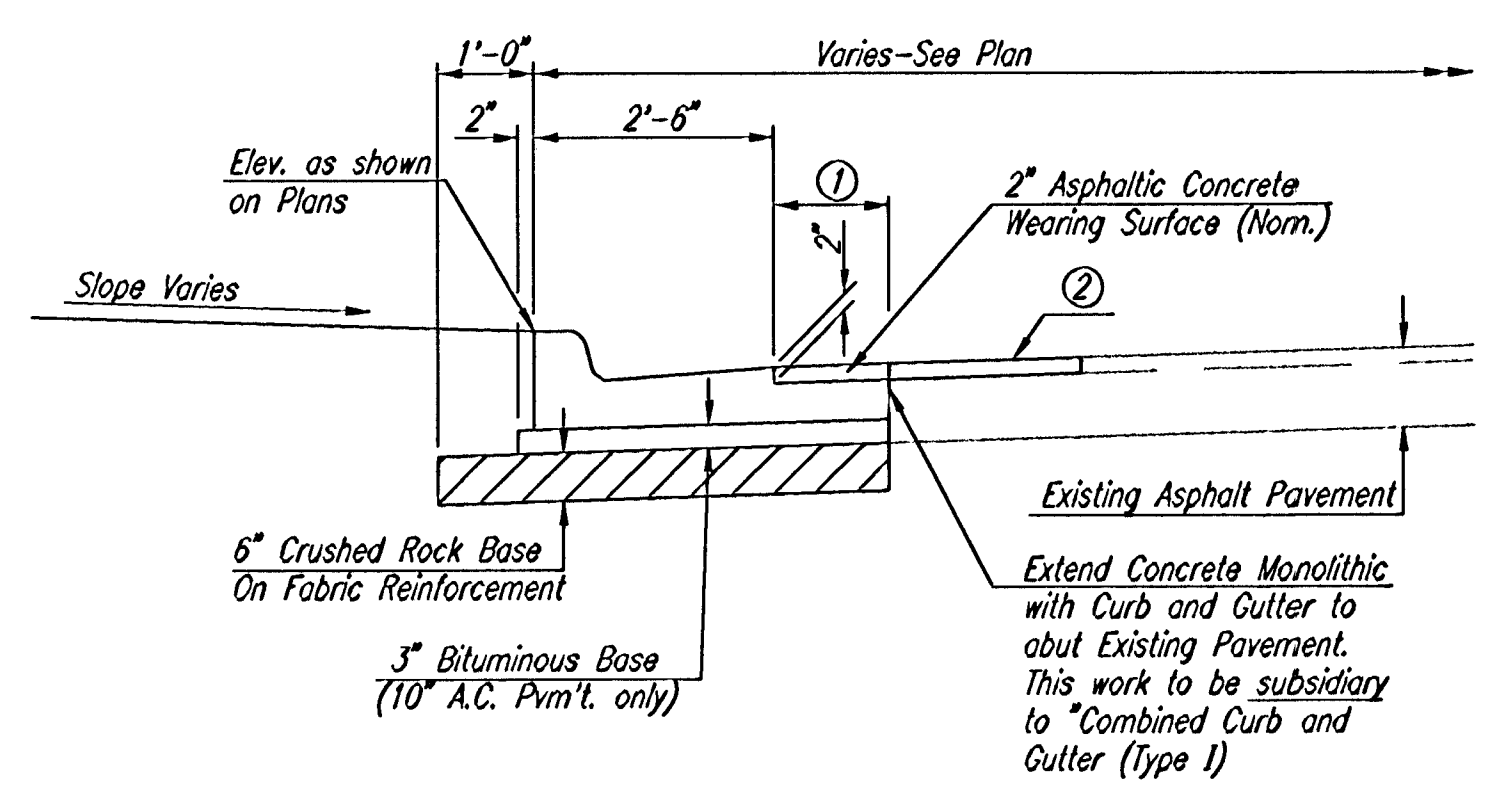


TYPICAL SECTION  
STA. 25+10 TO STA. 33+64

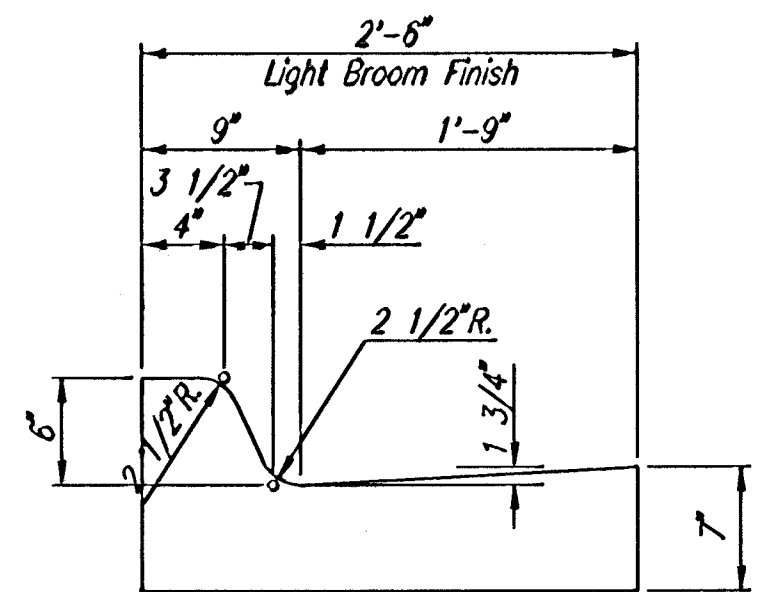
- ① Where this Dimension varies from 1'-6" to 0'-0" between Proposed High Edge and Existing Pavement.
- ② Saw Cut, Remove and Replace Surface Course, as necessary to provide a neat line. This work to be subsidiary to Asphalt Pavement.
- ③ Varies from 0'-0" at Sta. 25+10 to 10'-0" at Sta. 27+23.
- ④ Varies from 10'-0" at Sta. 32+50 to 0'-0" at Sta. 33+64.94.
- ⑤ The thickness of the overlay varies. A average thickness of 3.75" was used to equate a volume of asphalt equal to 631.1 tons computed at 145 lbs./cu. ft. (Information Only)



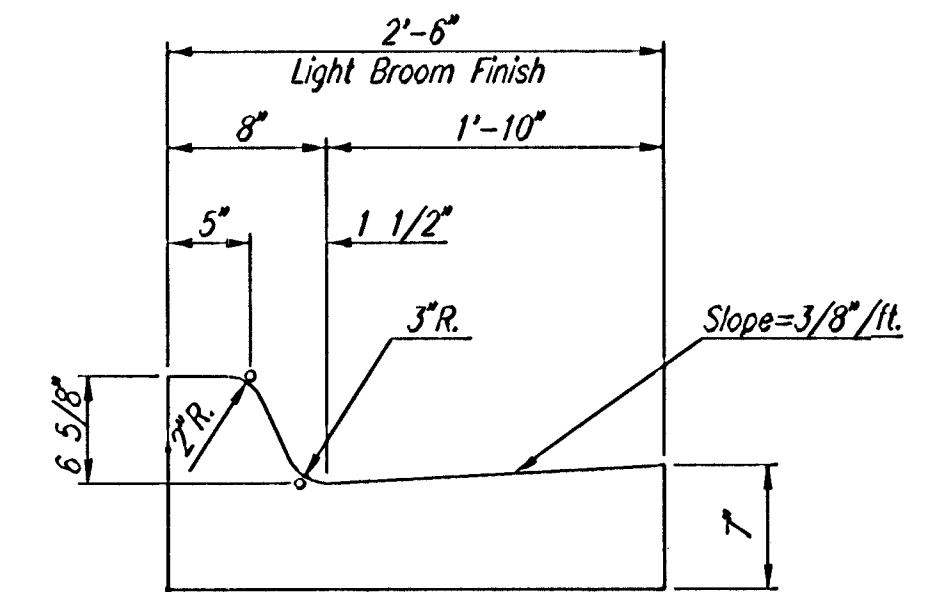
TYPICAL SECTION  
STA. 43+45.23 TO STA. 46+24.06



DETAIL A



COMBINED CURB AND GUTTER  
TYPE I



COMBINED CURB AND GUTTER (6 5/8")

GENERAL NOTES

FABRIC BASE REINFORCEMENT SHALL BE B X 1100 GEOGRID AS MANUFACTURED BY TENSAR CORPORATION OR APPROVED EQUAL. FABRIC BASE REINFORCEMENT SHALL BE INSTALLED IN ACCORDANCE WITH MANUFACTURER'S RECOMMENDATIONS.

ROCK BASE IS TO BE COMPACTED AND SMOOTHED WITH A STEEL FACED ROLLER PRIOR TO PLACEMENT OF ASPHALT. TACK COAT WILL NOT BE APPLIED TO ROCK BASE.

A TACK COAT OF EMULSIFIED ASPHALT (SC-1H OR CSS-1H) SHALL BE APPLIED AT AN APPROXIMATE RATE OF 0.05 GALLONS PER SQUARE YARD BETWEEN EACH LIFT OF ASPHALTIC MATERIAL.

BITUMINOUS BASE AND ASPHALTIC CONCRETE WEARING SURFACE SHALL BE PLACED WITH A LAYDOWN MACHINE HAVING AUTOMATIC CONTROLS FOR LINE AND GRADE.

CONSTRUCTION JOINTS IN EACH LIFT SHALL BE STAGGERED A MINIMUM DISTANCE OF ONE (1) FOOT FROM JOINTS IN PRECEDING LIFTS AND PLACED SO THAT A JOINT WILL BE CONSTRUCTED ON THE CENTERLINE OF THE TOP LIFT.

WEBB ROAD SOUTH OF 21ST STREET NORTH

TYPICAL SECTIONS

Professional Engineering Consultants, P.A.  
303 S. TOPEKA • WICHITA, KANSAS 67202  
316-262-2691 • FAX 316-262-3003

Designed by	RWM	Checked by	
Drawn by	SAW	Date	DEC. 2002
		Job No.	02621

DSNR: DEP OPER: DEP SCALE: 1"=4' 00' 01/2002 02621 Streets Standards TYPSEC 01-28-2003 10:55:07 am