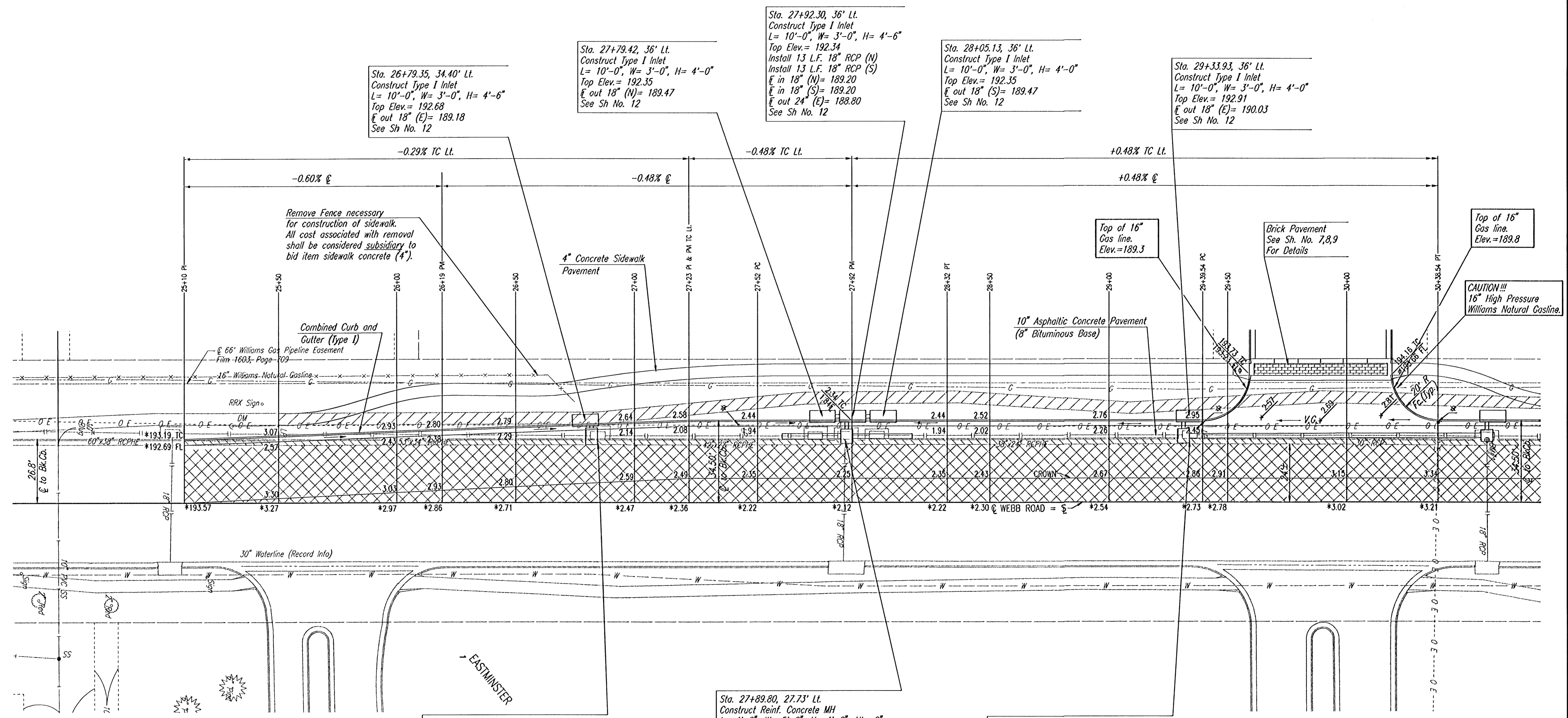


**NOTE:**  
CONTRACTOR SHALL NOT DISTURB GROUND 2.5 FEET ABOVE EXISTING 16" GAS LINE.



Sta. 26+79.35, 34.40' Lt.  
Construct Type I Inlet  
L= 10'-0", W= 3'-0", H= 4'-6"  
Top Elev.= 192.68  
E out 18" (E)= 189.18  
See Sh No. 12

Sta. 27+79.42, 36' Lt.  
Construct Type I Inlet  
L= 10'-0", W= 3'-0", H= 4'-6"  
Top Elev.= 192.35  
E out 18" (N)= 189.47  
See Sh No. 12

Sta. 27+92.30, 36' Lt.  
Construct Type I Inlet  
L= 10'-0", W= 3'-0", H= 4'-6"  
Top Elev.= 192.34  
Install 13 L.F. 18" RCP (N)  
Install 13 L.F. 18" RCP (S)  
E in 18" (N)= 189.20  
E in 18" (S)= 189.20  
E out 24" (E)= 188.80  
See Sh No. 12

Sta. 28+05.13, 36' Lt.  
Construct Type I Inlet  
L= 10'-0", W= 3'-0", H= 4'-6"  
Top Elev.= 192.35  
E in 18" (S)= 189.47  
See Sh No. 12

Sta. 29+33.93, 36' Lt.  
Construct Type I Inlet  
L= 10'-0", W= 3'-0", H= 4'-6"  
Top Elev.= 192.91  
E out 18" (E)= 190.03  
See Sh No. 12

Remove Fence necessary for construction of sidewalk. All cost associated with removal shall be considered subsidiary to bid item sidewalk concrete (4").

4" Concrete Sidewalk Pavement

Top of 16" Gas line. Elev.=189.3

Brick Pavement See Sh. No. 7,8,9 For Details

Top of 16" Gas line. Elev.=189.8

CAUTION!!! 16" High Pressure Williams Natural Gasline.

Sta. 26+81.96, 27.73' Lt.  
Construct Reinf. Concrete MH  
L= 4'-0", W= 6'-0", H= 5'-6", Ht= 9"  
Top Elev.= 192.39 (Top Slab Thickness= 6")  
Remove Exist. Inlets  
Connect to Exist. 18" RCP (E)  
Install 25 L.F. 42"x27" RCPHE (S)  
Connect to Exist. Joint (S)  
Install 25 L.F. 38"x24" RCPHE (N)  
Connect to Exist. Joint (N)  
Install 6 L.F. 18" RCP (W)  
E in 48"x27" (N)= 187.77  
E in 18" (W)= 188.5  
E out 53"x34" (S)= 187.77  
See Sh. No. 11

Sta. 27+89.80, 27.73' Lt.  
Construct Reinf. Concrete MH  
L= 4'-0", W= 5'-0", H= 4'-6", Ht= 9"  
Top Elev.= 192.04 (Top Slab Thickness= 6")  
Remove Exist. Inlets  
Connect to Exist. 18" RCP (E)  
Install 25 L.F. 42"x27" RCPHE (S)  
Connect to Exist. Joint (S)  
Install 25 L.F. 38"x24" RCPHE (N)  
Connect to Exist. Joint (N)  
Install 8 L.F. 24" RCP (W)  
E in 38"x24" (N)= 187.94  
E in 18" (E)= 188.24  
E in 24" (W)= 188.00  
E out 42"x27" (S)= 187.94  
See Sh. No. 11

Sta. 29+31.43, 27.73' Lt.  
Construct Reinf. Concrete MH  
L= 4'-0", W= 5'-0", H= 4'-6", Ht= 9"  
Top Elev.= 192.61 (Top Slab Thickness= 6")  
Remove Exist. Inlet  
Remove 128 L.F. 30" RCP (N)  
Connect to Exist. 38"x24" RCPHE (S)  
Install 128 L.F. 24" RCP (N)  
Install 8 L.F. 18" RCP (W)  
E in 24" (N)= 188.95  
E in 18" (W)= 189.49  
E out 38"x24" (S)= 188.95  
See Sh. No. 11

- ◆ CONST. STD. WHEELCHAIR RAMP
- \* TO BE RELOCATED BY OTHERS
- \* MATCH EXISTING
- ▨ 2" MILL WITH OVERLAY
- ▨ SIDEWALK AND PAVEMENT REMOVAL
- ▨ REMOVE EXISTING CURB AND GUTTER

CITY OF WICHITA, KANSAS

**WEBB ROAD**  
STA. 25+10.00 TO STA. 30+38.54

**Professional Engineering Consultants, P.A.**  
303 S. TOPEKA - WICHITA, KANSAS 67202  
316-262-2691 • FAX 316-262-3003

Designed by RWM	Checked by BER
Drawn by GJR, SAW	Date JANUARY 2003 Job No. 02621

DSNR DEP OPER SCALE: 1"=20.00  
Q:\2002\02621\Streets\Webb-Pave1 D1-28-2003 11:07:19 am