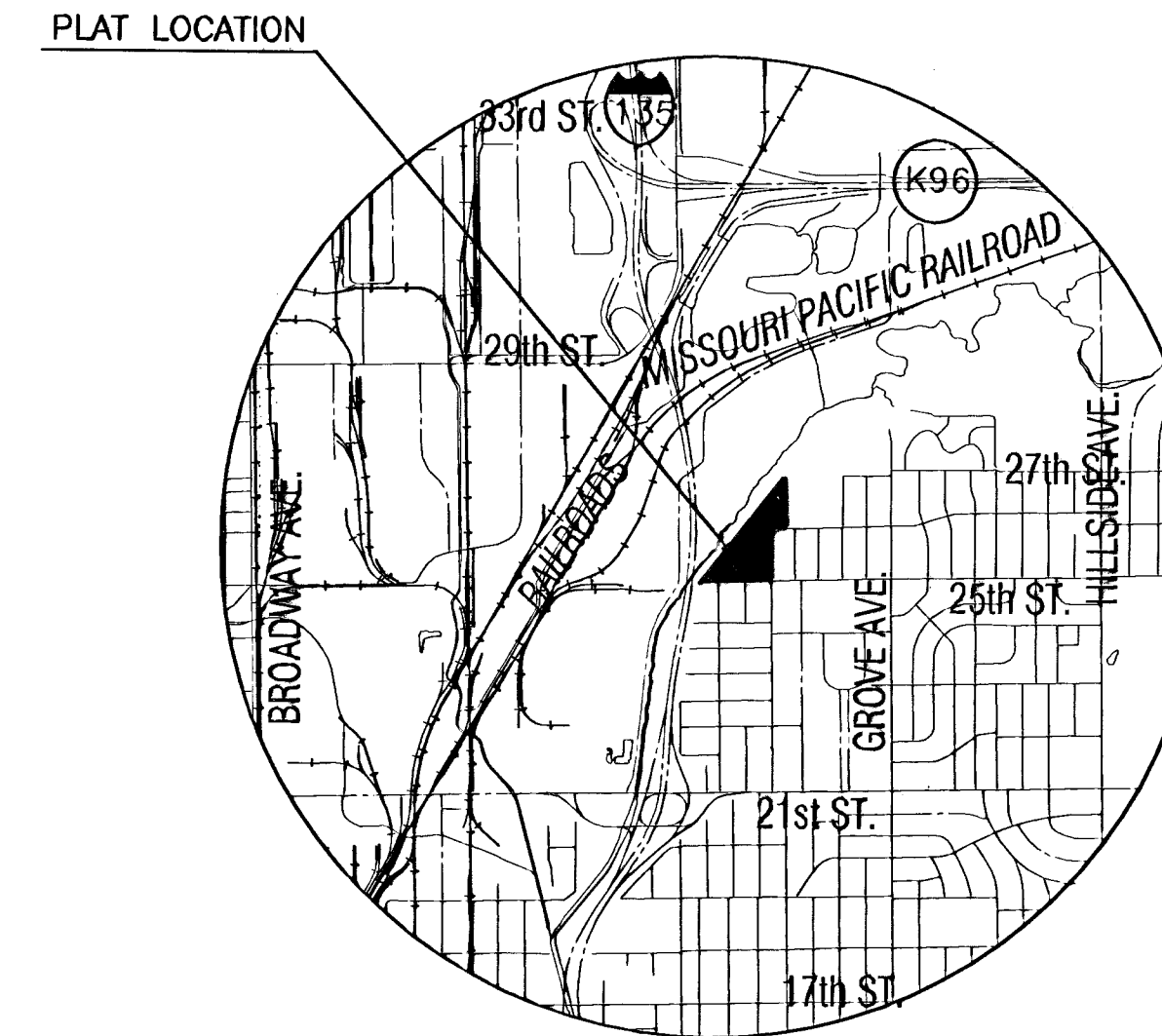


# PAVING & INCIDENTAL DRAINAGE FOR STREETS IN POWER C.D.C. SECOND ADDITION

AN ADDITION TO THE CITY OF WICHITA  
SEDGWICK COUNTY, KANSAS  
PROJECT NO. 472-83675  
NEIL D. CABLE, CITY ENGINEER  
OCA 765771

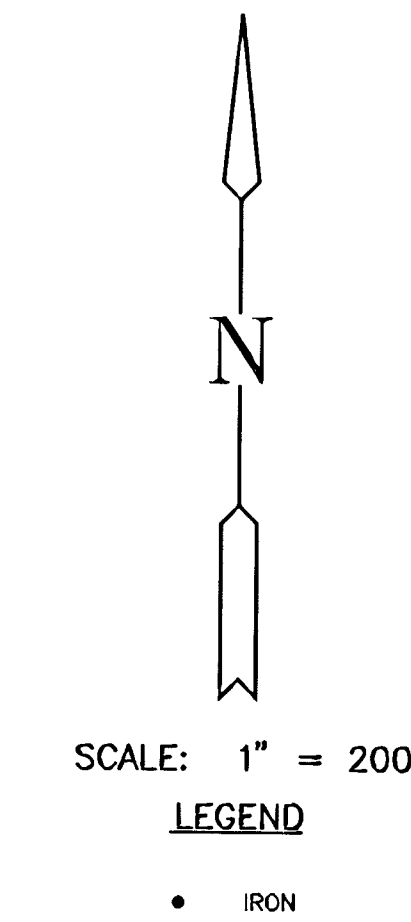
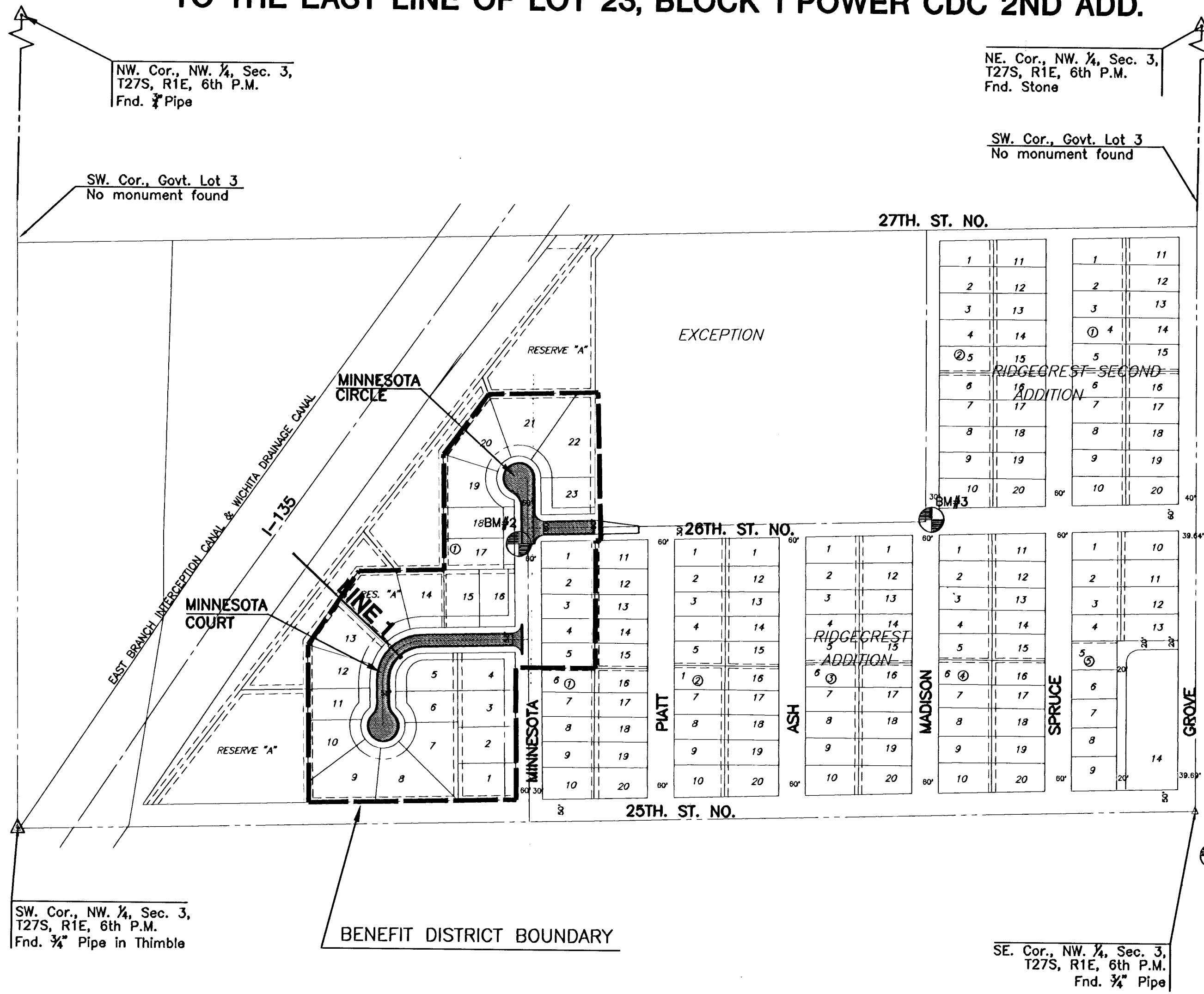
**MINNESOTA COURT: FROM THE WEST LINE OF MINNESOTA AVENUE TO & INCLUDING THE CUL-DE-SAC**  
**MINNESOTA CIRCLE: FROM THE NORTH LINE OF 26TH. ST. NO. TO & INCLUDING THE CUL-DE-SAC**  
**26TH. STREET NORTH: FROM THE EAST LINE OF MINNESOTA AVENUE TO TO THE EAST LINE OF LOT 23, BLOCK 1 POWER CDC 2ND ADD.**



LOCATION MAP

## GENERAL NOTES

- UNLESS SHOWN OR STATED OTHERWISE ON THESE DRAWINGS, MATERIALS AND CONSTRUCTION SHALL BE IN ACCORDANCE WITH CITY OF WICHITA CONCRETE PAVEMENT AND ASPHALTIC CONCRETE PAVEMENT SPECIFICATIONS.
  - THE CONTRACTOR SHALL BE RESPONSIBLE FOR PRESERVING PROPERTY IRONS. THE CONTRACTOR WILL BE REQUIRED TO RE-ESTABLISH ANY PROPERTY IRONS WHICH ARE DAMAGED OR DESTROYED BY HIS CONSTRUCTION OPERATIONS. SUCH IRONS SHALL BE RE-ESTABLISHED BY A LICENSED LAND SURVEYOR IN ACCORDANCE WITH STATE LAWS.
  - TRANSITION CURB FROM FULL HEIGHT COMBINATION CURB AND GUTTER TO ROLL TYPE COMBINATION CURB AND GUTTER IS TO BE PAID AS BID FOR LINEAL FEET COMBINED CURB AND GUTTER (3 5/8" ROLL).
  - EXISTING UTILITIES AND THEIR LOCATIONS, AS SHOWN ON THE PLANS REPRESENT THE BEST INFORMATION OBTAINABLE FOR DESIGN. LOCATION INFORMATION HAS BEEN OBTAINED FROM THE VARIOUS UTILITY COMPANIES AND IS EITHER FROM COMPANY RECORD DRAWINGS OR COMPANY PROVIDED FIELD LOCATIONS. THE PLAN LOCATIONS SHOWN ARE NOT GUARANTEED. ADDITIONAL EXISTING UTILITIES MAY ALSO BE ENCOUNTERED.
  - CONTRACTOR WILL BE REQUIRED TO PROVIDE A MINIMUM ADVANCE NOTICE OF FORTY-EIGHT (48) HOURS TO UTILITY COMPANIES PRIOR TO STARTING ANY EXCAVATION AS FOLLOWS:  
  
KANSAS ONE-CALL 1-800-344-7233  
OR 687-2470 (LOCAL WICHITA)
- THE CONTRACTOR MUST NOTIFY THE FOLLOWING IN CASE OF AN EMERGENCY:
- |                               |          |
|-------------------------------|----------|
| COX COMMUNICATIONS (CABLE)    | 262-0661 |
| KANSAS GAS SERVICE (GAS)      | 832-3101 |
| WESTAR (ELECTRIC)             | 261-6512 |
| AQUILA (GAS)                  | 946-0096 |
| SBC (TELEPHONE)               | 870-8390 |
| CITY OF WICHITA WATER & SEWER | 262-6000 |
- RUBBLE FROM THE REMOVAL OF MISCELLANEOUS STRUCTURES AND EXCESS EXCAVATION WHICH IS TO BE WASTED SHALL BE DISPOSED OF ON SITES TO BE PROVIDED BY THE CONTRACTOR. THESE SITES SHALL BE APPROVED BY THE ENGINEER AS TO SUITABILITY, APPEARANCE AND SITE LOCATION. LOCATIONS THAT, IN THE OPINION OF THE ENGINEER, WILL LEAVE AN UNSIGHTLY APPEARANCE WILL NOT BE APPROVED. ALL DISPOSAL SITES MUST BE APPROVED BY THE KANSAS DEPARTMENT OF HEALTH AND ENVIRONMENT. MATERIAL EITHER STOCKPILED OR DISPOSED OF IN A FLOOD PLAIN WOULD REQUIRE A KANSAS STATE BOARD OF AGRICULTURE PERMIT. ANY MATERIAL DUMPED IN WATERS OF THE UNITED STATES OR WETLANDS IS SUBJECT TO U.S. CORPS OF ENGINEERS PERMITTING REGULATIONS. ANY MATERIAL BURIED OR STOCKPILED BEYOND APPROVED CONSTRUCTION LIMITS WOULD REQUIRE ADDITIONAL ARCHAEOLOGICAL INVESTIGATIONS UNLESS BURIED IN A PREVIOUSLY APPROVED BORROW LOCATION.
  - THIS PROJECT INCLUDES A CERTAIN AMOUNT OF ROLL TYPE CURB CONSTRUCTION. ROLL CURBS SHALL BE DEPRESSED THROUGH ALL DRIVEWAY OPENINGS WHEN SUCH DRIVES ARE CONSTRUCTED AS A PART OF THE PROJECT. NO MORE THAN 2 DRIVES 20 FEET IN WIDTH OR EQUIVALENT COMBINATIONS THEREOF ARE TO BE CONSTRUCTED WITH THIS PROJECT.
  - A SAW CUT OF AT LEAST ONE-HALF THE DEPTH OF THE EXISTING SURFACE COURSES OR ONE-FOURTH THE DEPTH OF THE EXISTING TOTAL PAVEMENT THICKNESS SHALL BE PROVIDED AT LOCATIONS WHERE PROPOSED CONSTRUCTION ADJUTS AN EXISTING SURFACE OR PAVEMENT FOR WHICH PARTIAL REMOVAL OF THAT SURFACE OR PAVEMENT IS REQUIRED. SAW JOINT TO FACILITATE REMOVAL WITHIN THREE (3) FEET OF EXISTING JOINTS WILL NOT BE PERMITTED AND FOR SUCH INSTANCES THE LIMITS OF REMOVAL SHALL EXTEND TO THE EXISTING JOINT. SUCH SAW CUTS WILL NOT BE PAID FOR DIRECTLY AND THIS COST SHALL BE CONSIDERED AS SUBSIDIARY TO SITE CLEARING.
  - CONTRACTOR SHALL RESEED AND MULCH ALL DISTURBED AREAS. COST SHALL BE CONSIDERED SUBSIDIARY TO SITE RESTORATION.

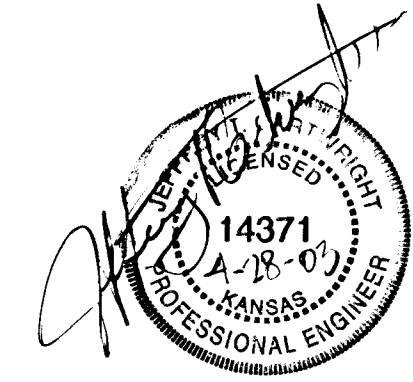


## INDEX TO DRAWINGS

SHEET NO.	DESCRIPTION
1	TITLE SHEET
2-3	TYP. PAVING SECTIONS
4	PAVING DETAILS
5	SIGNING DETAILS
6-7	MINNESOTA COURT
8	MINNESOTA CIRCLE
9	26TH. STREET NORTH
10	SWS PLAN & PROFILE LINE 1
11	INLET DETAILS
12-14	EROSION DETAILS
15-19	CROSS SECTIONS
20	FINAL PLATS

## BENCHMARK

- BM#1 City disc at SE cor. of 25th and Grove.  
ELEV. = 141.65 City Datum  
1329.05 NGVD
- BM#2 "C" Top of curb W. side of Minnesota, S. of C. 26th St. 30'±.  
ELEV. = 130.60 City Datum  
1318.00 NGVD
- BM#3 "C" Top of curb at NE. cor. of Madison and 26th St.  
ELEV. = 134.505 City Datum  
1321.905 NGVD



NOTES:  
NO SHRINKAGE/EXPANSION FACTORS WERE FIGURED INTO EARTHWORK QUANTITIES.  
THE DIFFERENCE IN EARTHWORK SHALL BE STOCKPILED ON SITE IN THE UNPLATTED AREA NORTHEAST OF POWER C.D.C. SECOND ADDITION. FINAL LOCATION TO BE DETERMINED BY DEVELOPER.

LENGTH OF PROJECT	
29' BK.-BK.....	483 L.F.
31' BK.-BK.....	300 L.F.
EXCAVATION.....	1054.4 C.Y.
COMPACTED FILL.....	175 C.Y.
BORROW.....	0 C.Y.

**POWER C.D.C. SECOND ADDITION**  
PROJECT NAME

**PAVING TITLE SHEET**  
SHEET TITLE

JTC DESIGN BY. DM DRAWN BY. JTC CHECKED BY.

APRIL 2003 DATE. 02035ET JOB NO. 1 / 20 SHEET/OF

411 N. WEBB ROAD  
WICHITA, KS. 67206  
316-684-9600