

Lateral 9, Main 4, NWI

# SANITARY SEWER EXTENSION

to serve

## Cheryl's Hollow, 2nd Addition

### CITY OF WICHITA, KANSAS

Gary Janzen, P.E. City Engineer

Project Number 468-84189

O.C.A. NO. 744416

### GENERAL NOTES:

- The Contractor shall comply with all applicable safety regulations. All construction shall be completed following current City Standard Specifications and Special Provisions.
- Contractor will be required to provide notice to utility companies a minimum of seventy-two (72) hours prior to any excavation, as follows:

Kansas One-Call 687-2470

The Contractor must notify the following in case of an emergency:

Cox Communications 316-260-7195  
 Kansas Gas Service 1-888-482-4950  
 Black Hills Energy 316-941-1628  
 Westar 316-216-6554  
 AT&T 316-268-2102  
 City of Wichita Water 316-268-4555  
 City of Wichita Sewer 316-268-4073  
 City of Wichita Stormwater 316-268-4090  
 City of Wichita Traffic 316-268-4034

- Utility service lines, poles, etc. are to be adjusted as necessary by others prior to construction unless the plans specifically call for their adjustment by the Contractor or unless the plans specifically identify a utility to be adjusted by its owner during construction. Existing utilities and their location, as shown on the plans, represent the best information obtainable for design. The Contractor will be required to work around existing utilities within the right-of-way which do not conflict with proposed construction.

- Rubble from the removal of miscellaneous structures and excess excavation which is to be wasted shall be disposed of on sites to be provided by the Contractor. These sites shall be approved by the Engineer as to suitability, appearance and site location. Locations, in the opinion of the Engineer, that will leave an unsightly appearance will not be approved. All disposal sites must be approved by the Kansas Department of Health and Environment. Material either stockpiled or disposed of in a flood plain will require a Kansas State Board of Agriculture permit. Any material dumped in waters of the United States or wetlands is subject to U.S. Corps. of Engineers permitting regulations. Any material buried or stockpiled beyond approved construction limits will require additional archaeological investigations unless buried in a previously approved borrow location.

- Trees and shrubs in public right-of-way which are in direct conflict with proposed new construction shall be removed by the Contractor with the Engineer's approval. Trees and shrubs which are not in direct conflict with proposed new construction shall be saved and protected from damage.

- The Contractor shall give all property owners and/or tenants of developed property abutting the construction of this project a minimum of ten (10) days notice prior to start of construction.

- The Contractor shall be responsible for preserving property irons. The Contractor will be required to re-establish any property irons which are damaged or destroyed by his construction operations. Such irons shall be re-established by a licensed land surveyor in accordance with state laws.

- If traffic will be impacted by construction, a traffic control plan must be submitted and approved by the City Traffic Engineer, Brian Coon at [traffic@wichita.gov](mailto:traffic@wichita.gov) before construction can begin. The Contractor shall be responsible for all traffic control measures to facilitate construction. All construction zone markings and signage shall conform to the latest version of the Manual on Uniform Traffic Control Devices (MUTCD) as published by the US Dept. of Transportation, Federal Highway Administration. All costs associated with construction markings and signage shall be the Contractors responsibility.

- All elevations shown are NAVD 88.

- All areas disturbed during construction that will not be under proposed pavement shall be restored to match existing conditions.

- The Contractor shall protect from damage and support existing utilities through constructions as approved by the utility owner and the Engineer at the contractors expense.

- Contractor shall limit the extent of trench openings overnight and weekends to less than 50 feet.

- Any sidewalk, drive approach, curb, or street pavement removed to construct project must have a pavement cut permit and be replaced by the City contractor. Permits can be obtained by calling 316-268-4501 or 316-268-4480.

- All stubs and plugged pipes shall be located with

green plastic tape in the same manner as risers.

- Connecting to Existing Manholes: Prior to laying sewer lines using existing stubs in existing manholes, the Contractor shall expose and verify the elevation, grade and alignment of existing stubs and notify the Engineer of any deviation from the plans. Where connection to an existing manhole that does not have an existing stub or the stub is unusable due to elevation grade or alignment, the Contractor shall bore cut into existing manhole wall to make connection using approved water stop gasket, and reshape the existing manhole invert to provide smooth flow. The cost to connecting to existing manholes is incidental to the project.

- Contractor shall provide positive drainage away from all manhole covers.

- The Contractor shall prevent any construction debris from entering the existing sanitary sewer during construction.

- The Contractor shall be responsible for maintaining continuous flow of sewage through construction. Contractors proposed method for maintaining sewage flow shall be submitted and approved by the Sewer Maintenance Division (316-268-4073) prior to starting and by-passing of sewage flows.

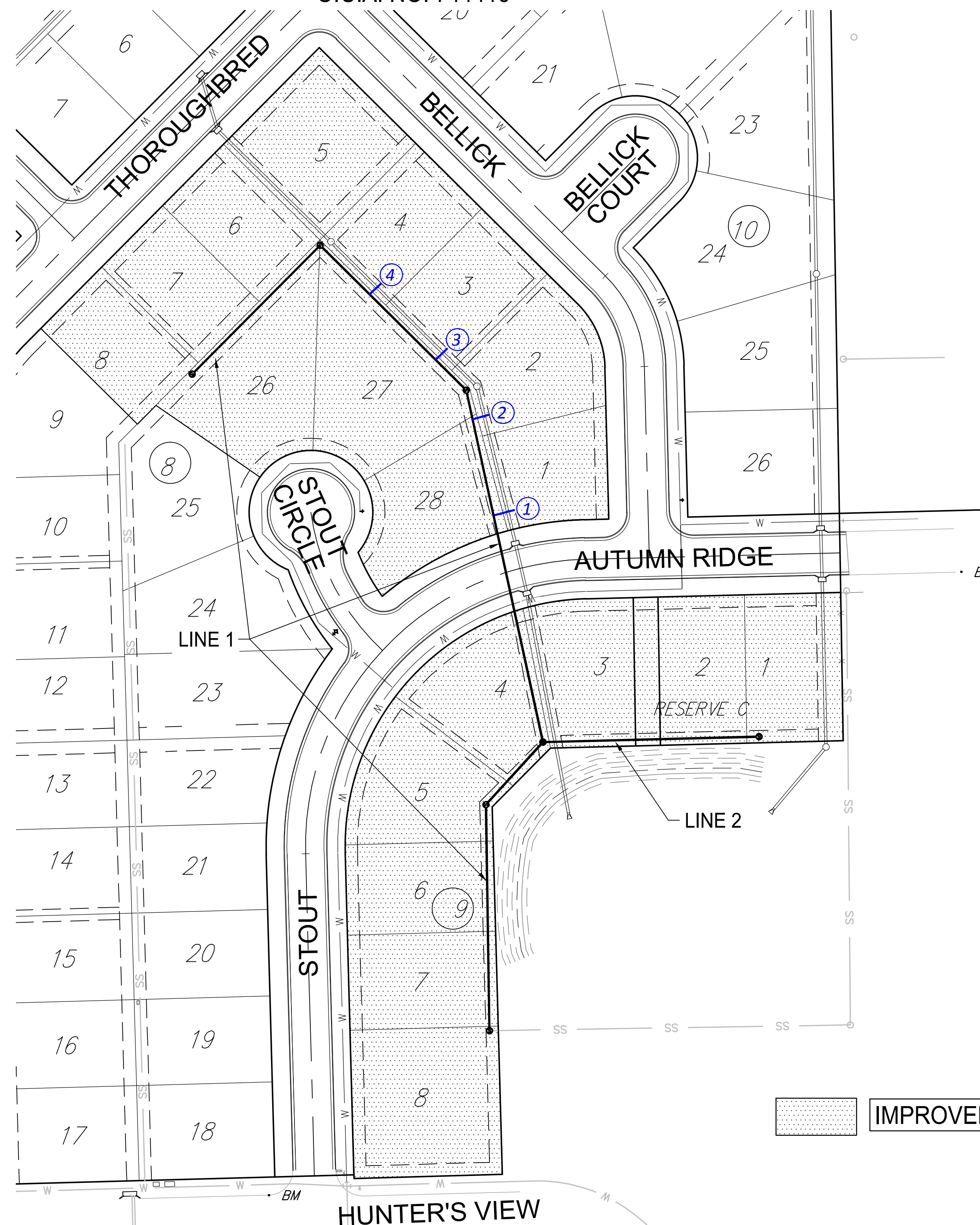
- Any over excavation from manhole and pipe removal shall be backfilled with AB-3 compacted to 90-95% ASTM D698.

**Dutton Construction - Contractor**  
**J. Brand - City of Wichita, Field Project Engineer**  
**T. Dvorak - City of Wichita, Inspector**  
**As-built**  
 Release Date: 2/21/2017  
 pdf: apr 2/21/2017

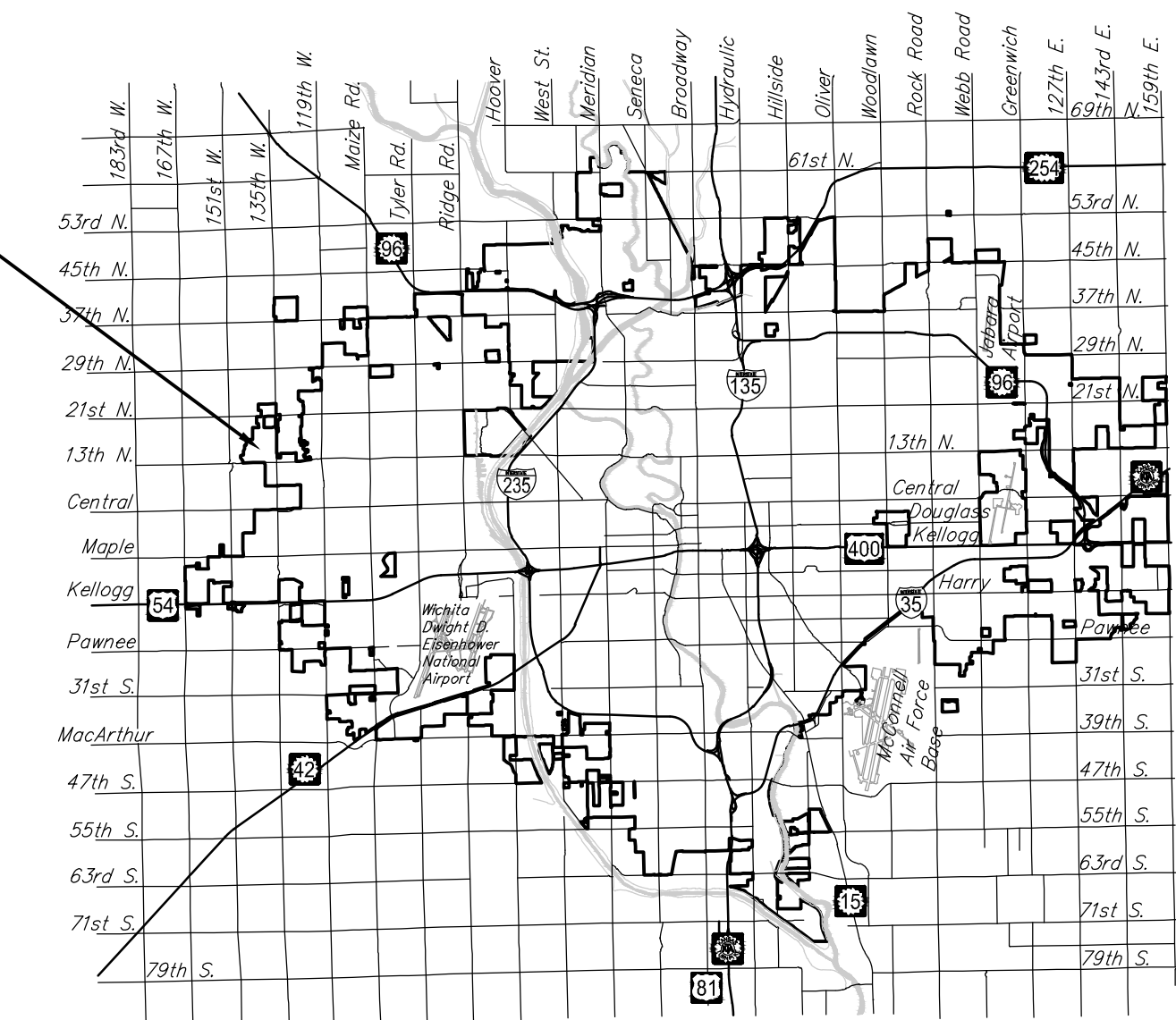
### Benchmarks

BENCHMARK:  
 POINT #30  
 CHISELED SQUARE ON THE TOP OF CURB ON THE SOUTH SIDE OF AUTUMN RIDGE, 98' EAST OF THE EAST LINE OF CHERYL'S HOLLOW 2ND ADDITION.  
 ELEVATION = 1364.26 (NAVD88)

BENCHMARK:  
 POINT #31  
 CHISELED SQUARE ON THE TOP OF CURB AT THE WEST CURB RETURN AT THE NORTHWEST CORNER OF HUNTER'S VIEW AND STOUT.  
 ELEVATION = 1364.76 (NAVD88)



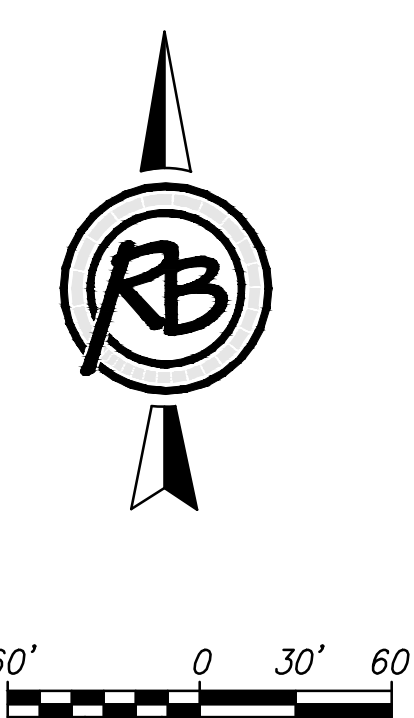
PROJECT LOCATION



Vicinity Map

### Sheet Index

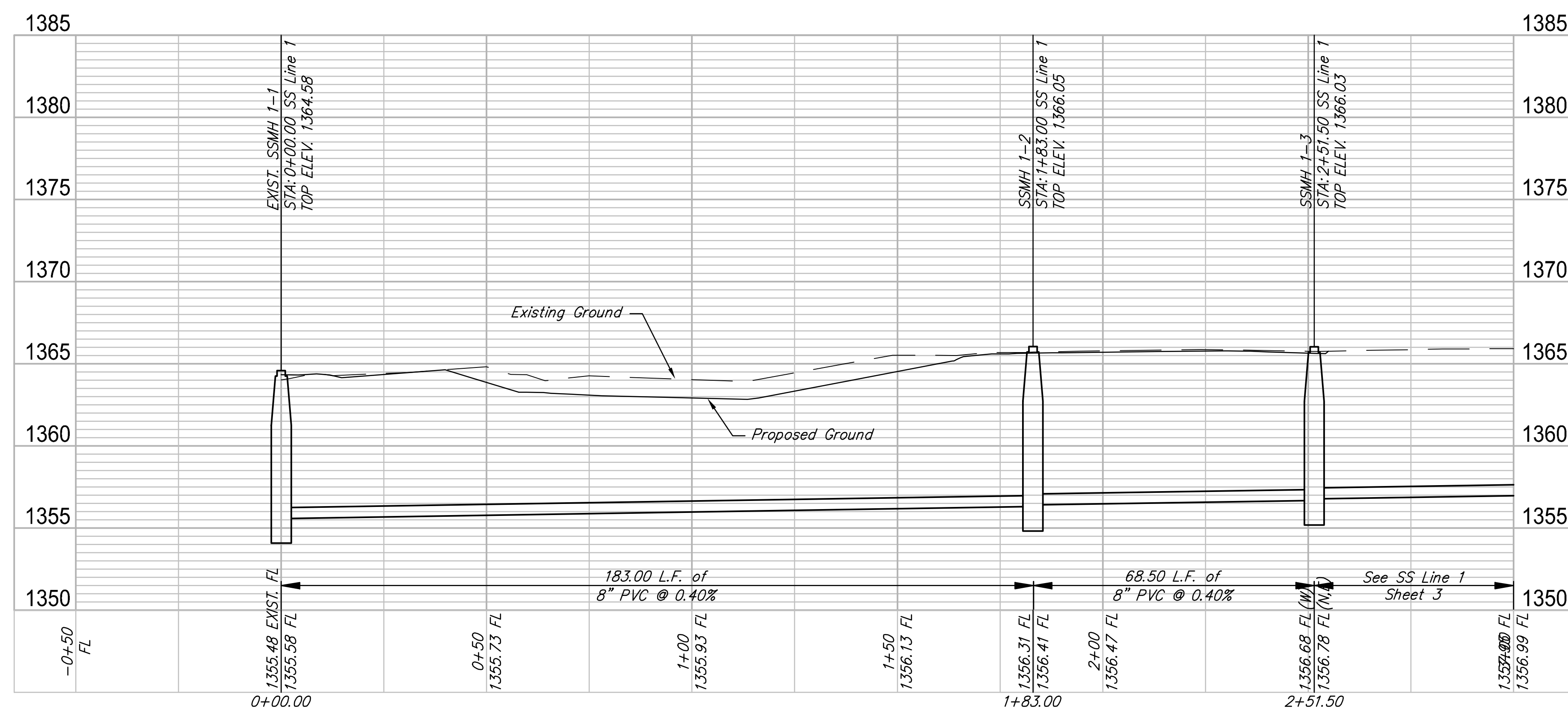
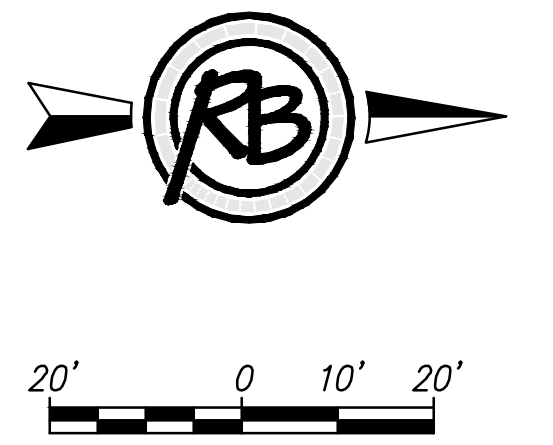
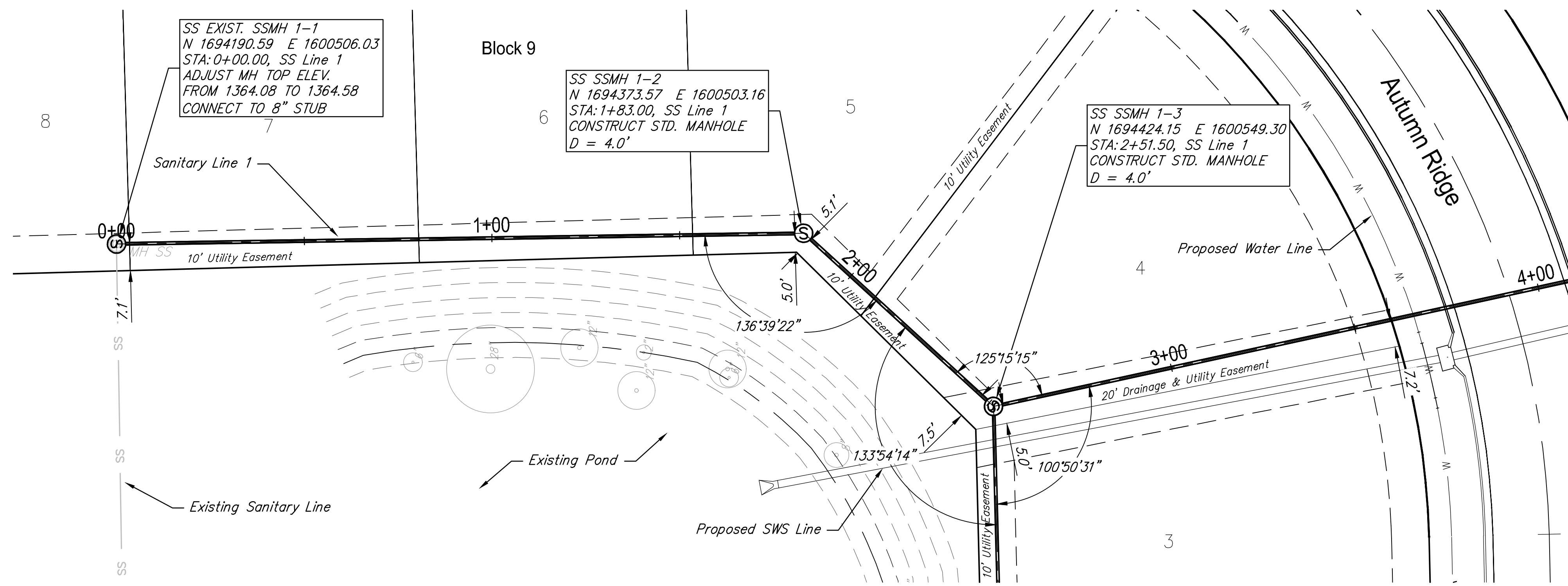
- TITLE SHEET
- PLAN & PROFILES
- EROSION CONTROL PLAN
- EASEMENT GRADING PLAN
- PRECAST SS MH DETAILS
- MH FRAME & COVER DETAILS
- VERTICAL RISER DETAILS
- CLEANOUT RISER ASSEMBLY
- EROSION CONTROL DETAILS
- COORDINATE MAP
- BUBBLE MAP
- PLAT



July 2016



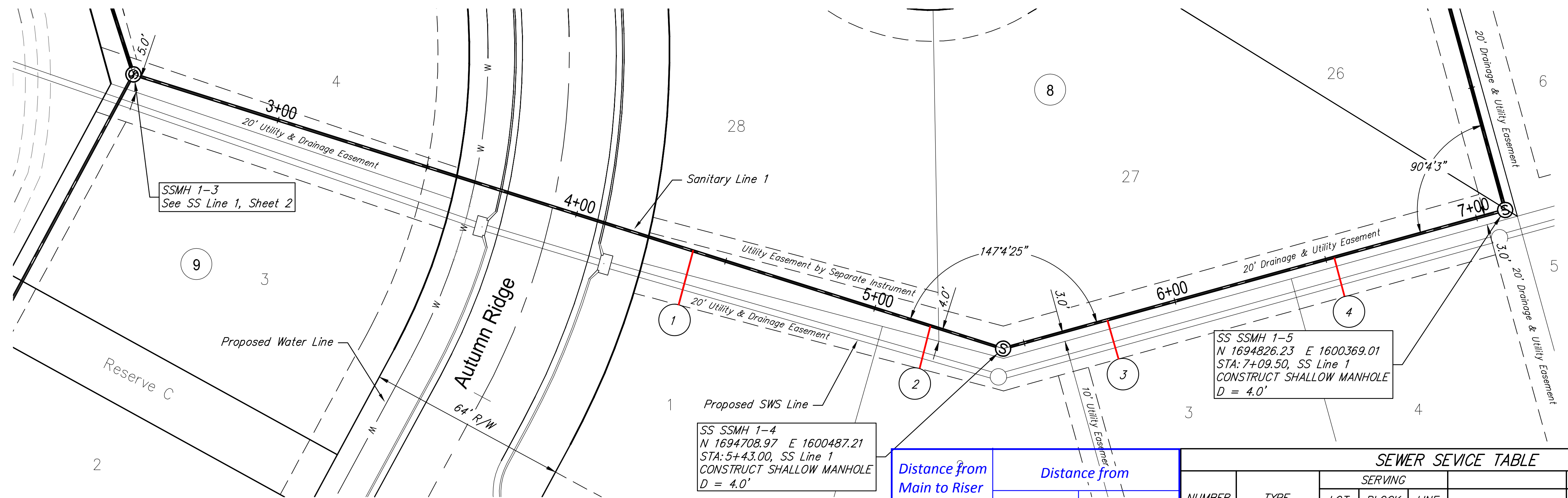
ENGINEERING | SURVEYING | LANDSCAPE ARCHITECTURE | GOVERNMENT  
 924 NORTH MAIN WICHITA, KANSAS 67203 P (316) 264-8008 F (316) 264-4621  
 WWW.RBKANSAS.COM



SS Line 1 PROFILE

PROJECT NUMBER	468-54189
DRAWING FILE	02 - SS Line 1A Plan and Profile
DESIGN	KWL
UTILITY	CDU
DATE	July 2016
REVIEW	June 2016
REVISION	July 2016

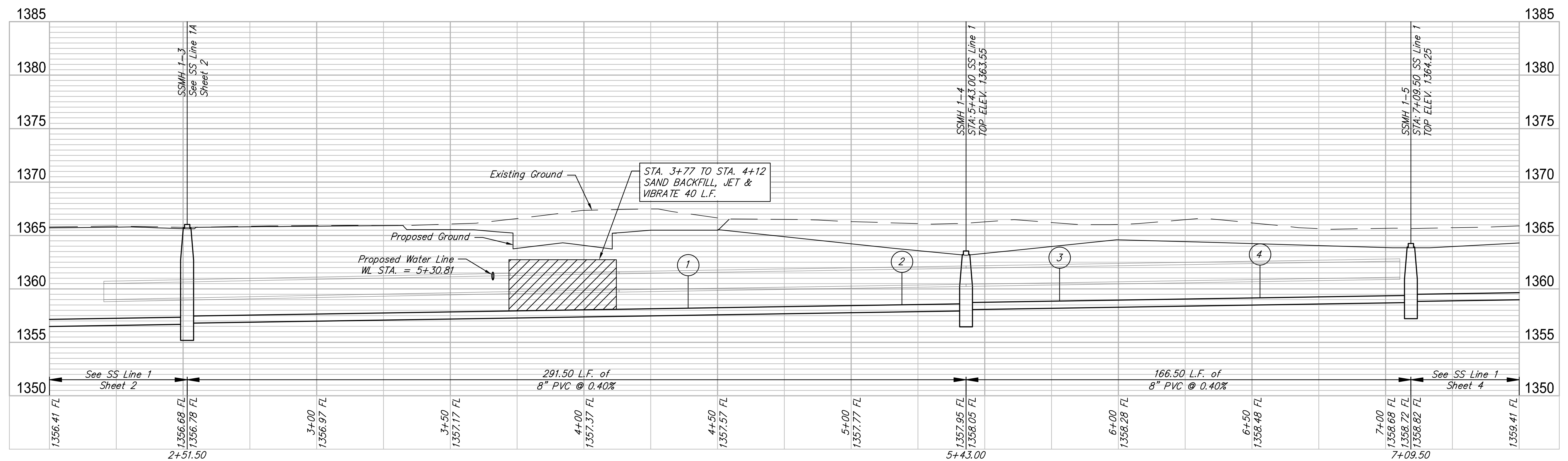
Cheryl's Hollow, 2nd Addition  
SS Line 1  
Wichita, Kansas



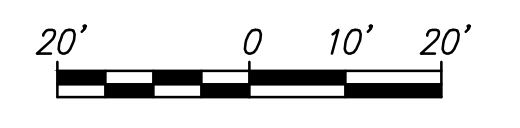
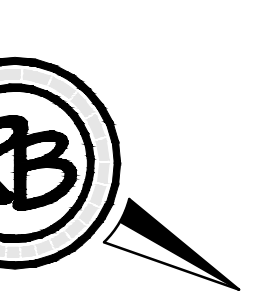
SS SSMH 1-4  
 N 1694708.97 E 1600487.21  
 STA: 5+43.00, SS Line 1  
 CONSTRUCT SHALLOW MANHOLE  
 D = 4.0'

SS SSMH 1-5  
 N 1694826.23 E 1600369.01  
 STA: 7+09.50, SS Line 1  
 CONSTRUCT SHALLOW MANHOLE  
 D = 4.0'

Distance from Main to Riser (Lt./Rt.)	Distance from		SEWER SERVICE TABLE					FOR INFORMATION ONLY		
	Upstream MH	Downstream MH	NUMBER	TYPE	SERVING			APPROX. LENGTH 4" PIPE		
					LOT NO.	BLOCK NO.	LINE NO.	STATION/DIRECTION	VERTICAL	HORIZONTAL
18' Rt.	187.5'	80'	1	8"x4" Tee	1	8	1	4+39 Right	5.0	18.0
14' Rt.	267.5'	24'	2	8"x4" Tee	2	8	1	5+19 Right	6.0	14.0
13' Rt.	35'	131.5'	3	8"x4" Tee	3	8	1	5+78 Right	4.0	13.0
13' Rt.	110'	56.5'	4	8"x4" Tee	4	8	1	6+53 Right	4.0	13.0

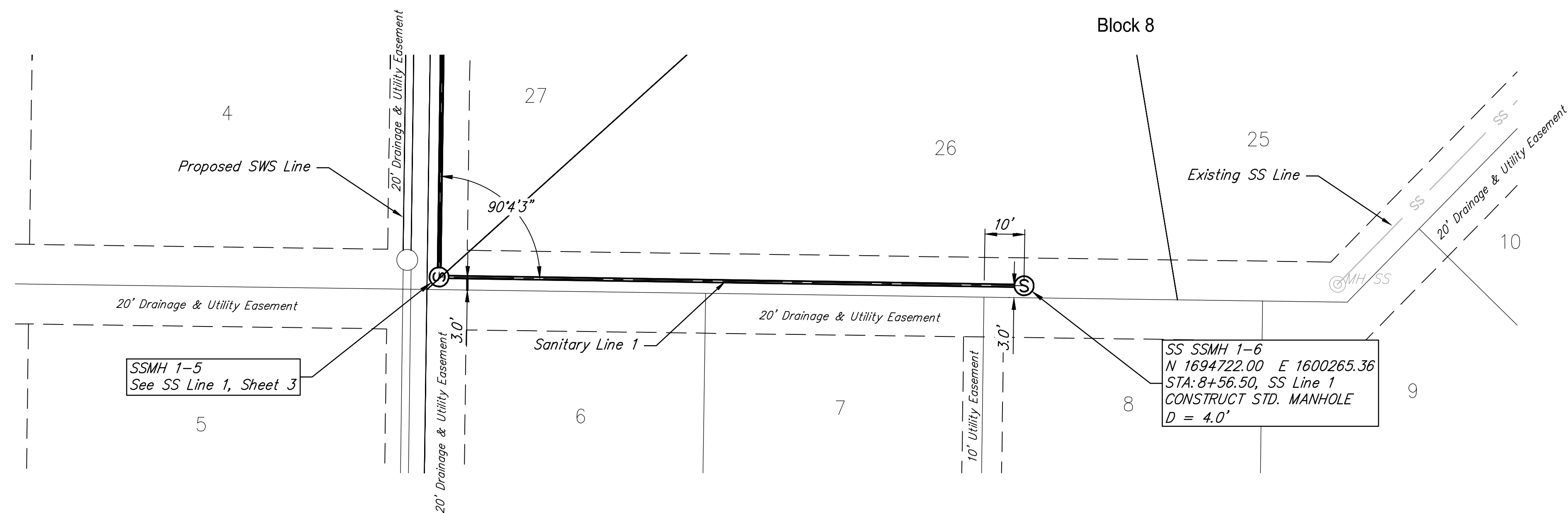
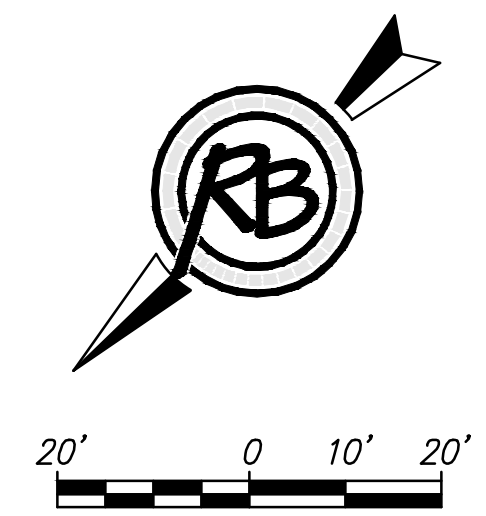


SS Line 1 PROFILE



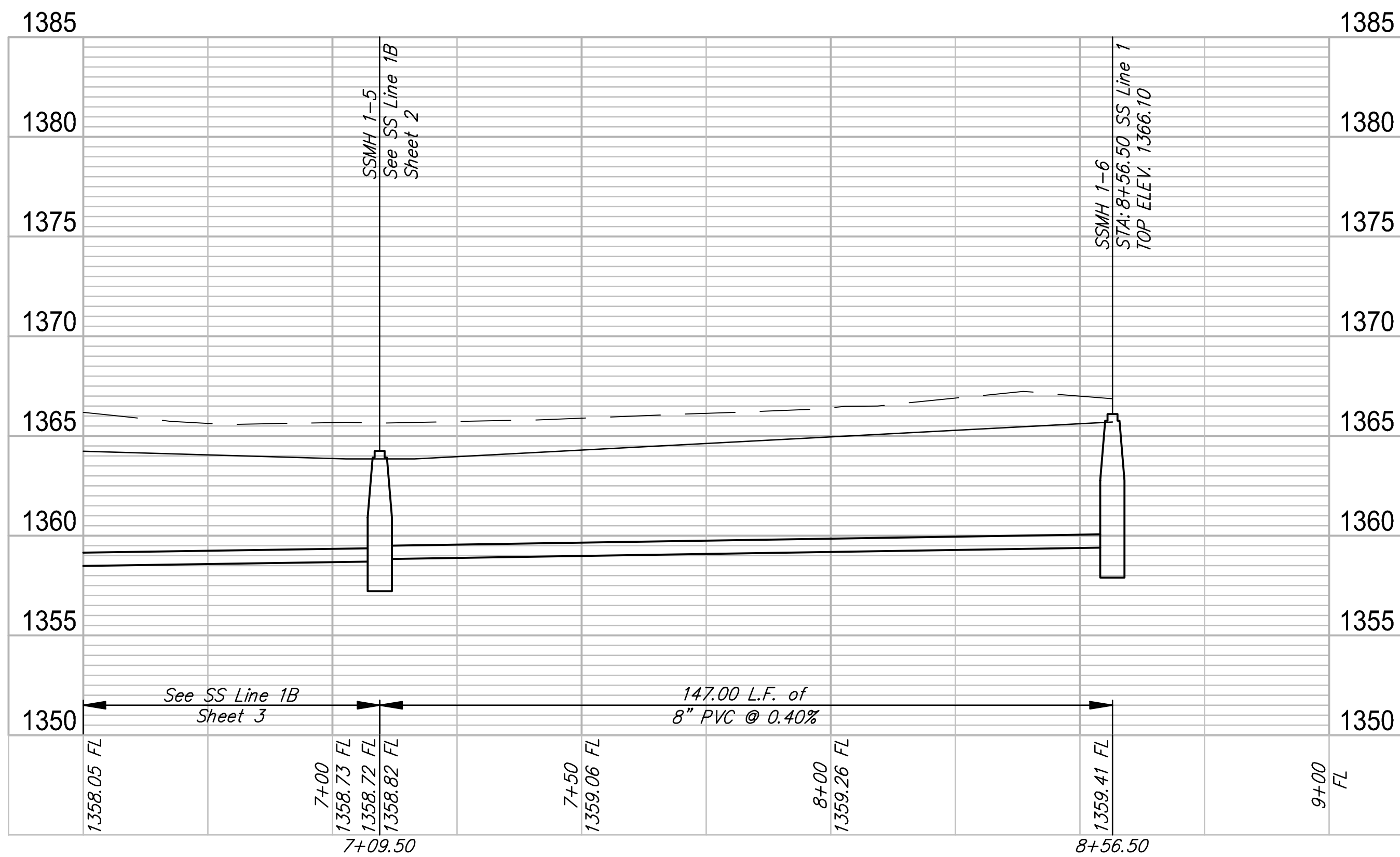
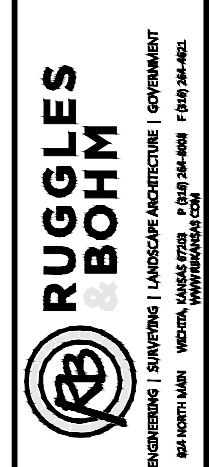
PROJECT NUMBER	468-84189
DRAWING FILE	03 - SS Line 1B Plan and Profile
DESIGN	KWL
UTILITY	...
DATE	July 2016
REVIEW	July 2016
REVISION	June 2016
DRAWN	CDJ

**Cheryl's Hollow, 2nd Addition**  
**SS Line 1**  
 Wichita, Kansas



SSMH 1-5  
See SS Line 1, Sheet 3

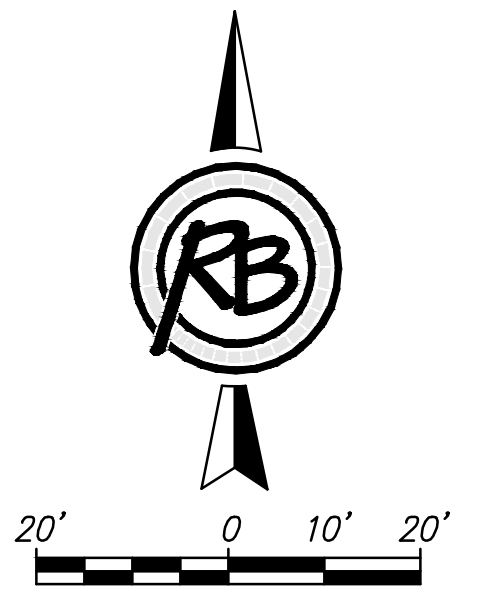
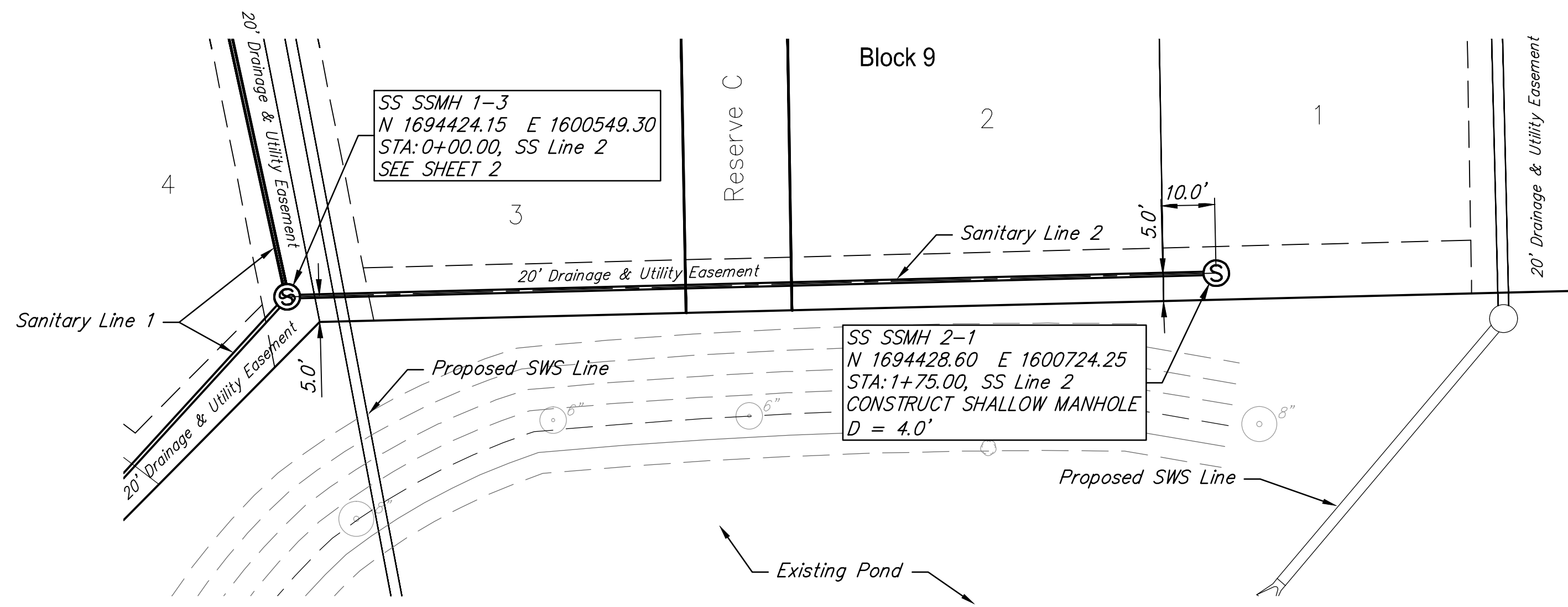
SS SSMH 1-6  
N 1694722.00 E 1600265.36  
STA: 8+56.50, SS Line 1  
CONSTRUCT STD. MANHOLE  
D = 4.0'



SS Line 1 PROFILE

PROJECT NUMBER	468-84189
DRAWING FILE	04 - SS Line 1C Plan and Profile
DESIGN	KWL
DESIGN UTILITY	...
DRAWN	CDJ
DATE	July 2016
REVISION	June 2016
REVIEW	July 2016

**Cheryl's Hollow, 2nd Addition**  
**SS Line 1**  
Wichita, Kansas



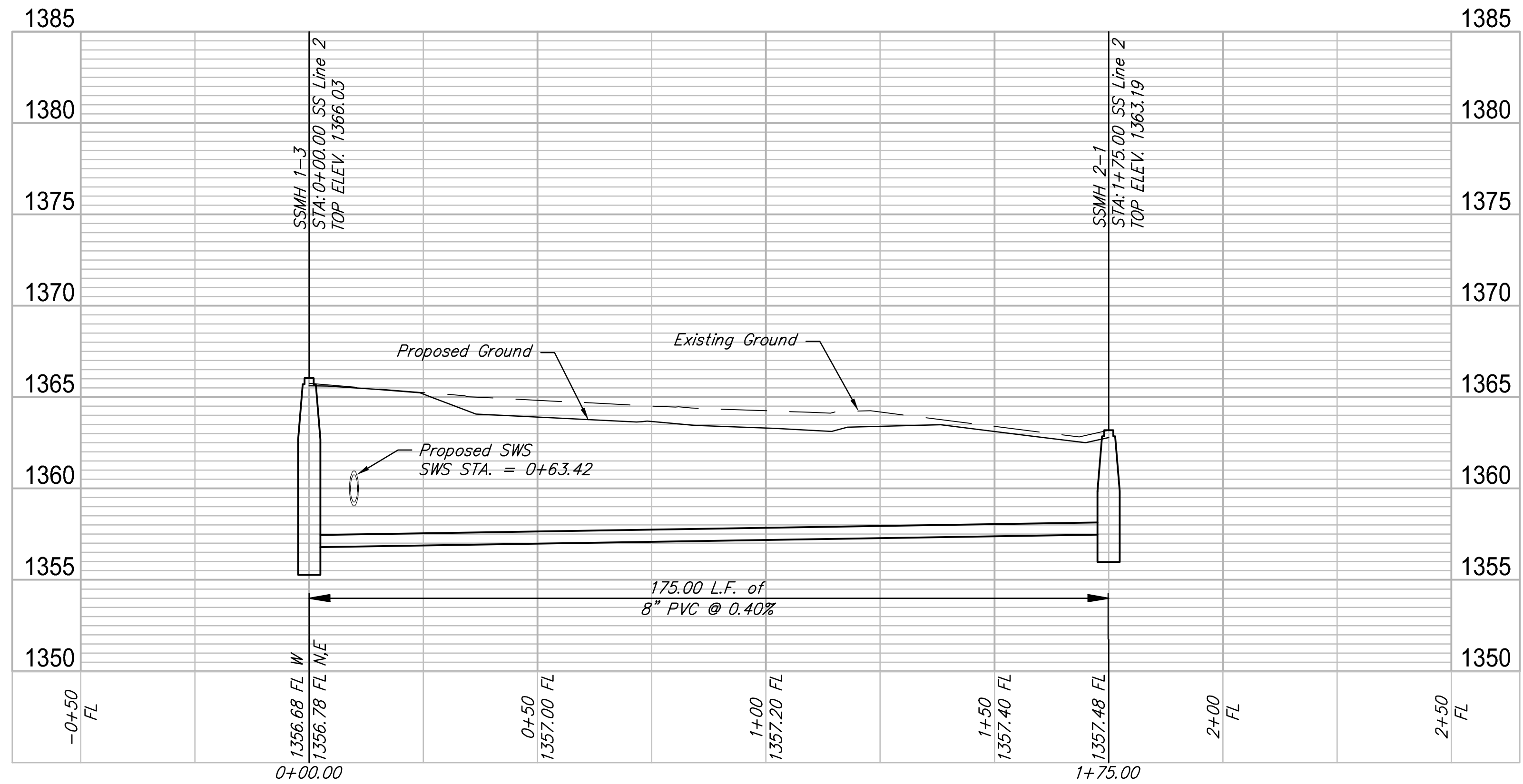
**RUGGLES BOHM**  
ENGINEERS | SURVING | LANDSCAPE ARCHITECTURE | COTYMANET  
1000 W. CENTRAL AVENUE, SUITE 100  
WICHITA, KANSAS 67202-1000  
PH: 316.261.1111  
WWW.RUGGLESBOHM.COM

DESIGN	CDJ	REVISION	June 2016
UTILITY	CDJ	DATE	July 2016
PROJECT NUMBER	468-84189	REVIEW	July 2016

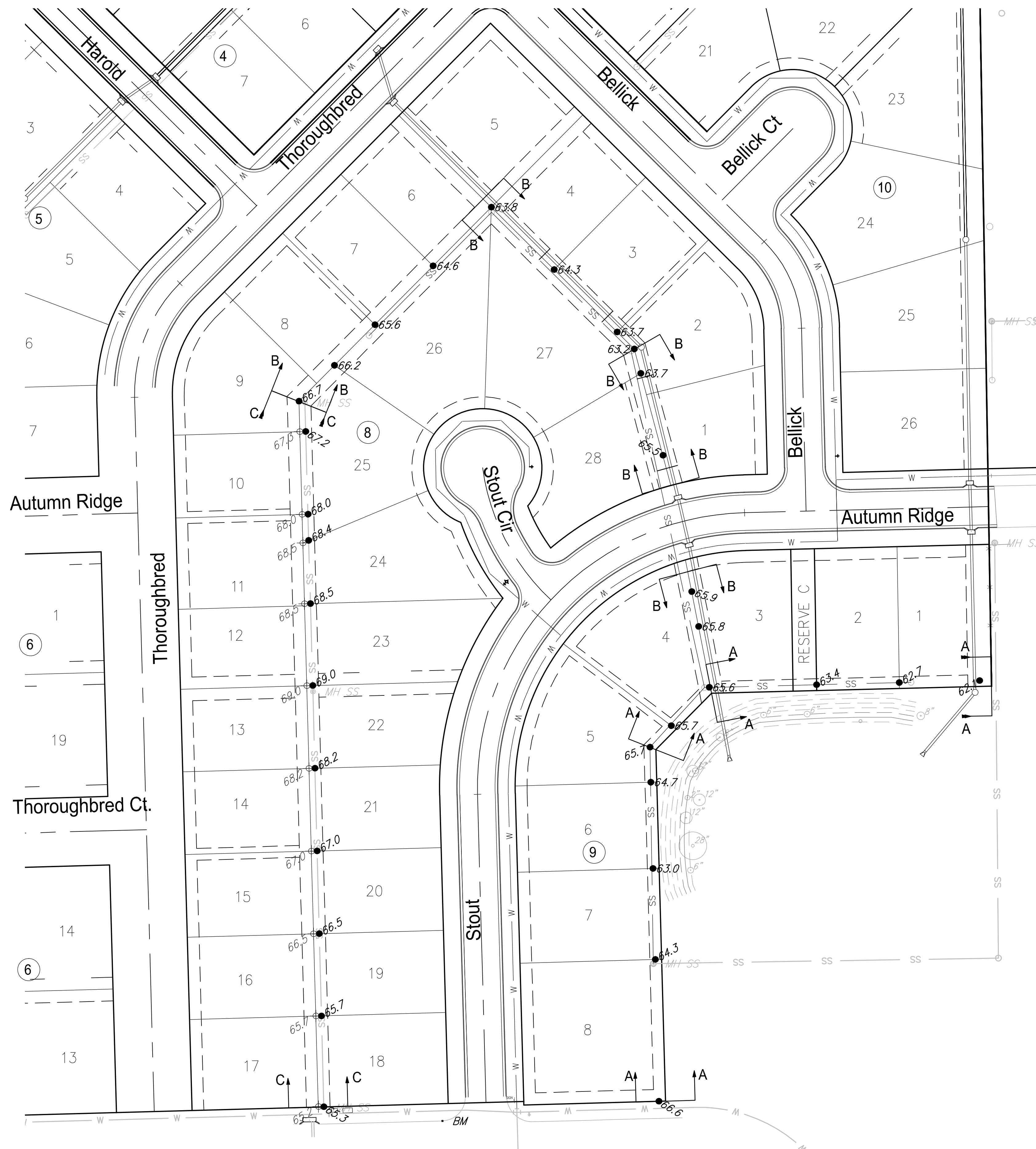
PROJECT NUMBER: 468-84189  
DRAWING FILE: 05 - SS Line 2 Plan and Profile

**Cheryl's Hollow, 2nd Addition**  
**SS Line 2**  
Wichita, Kansas

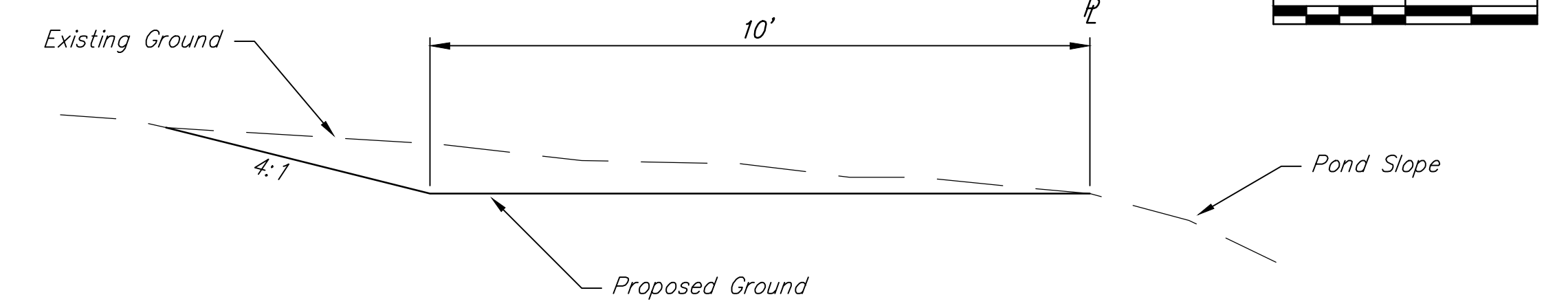
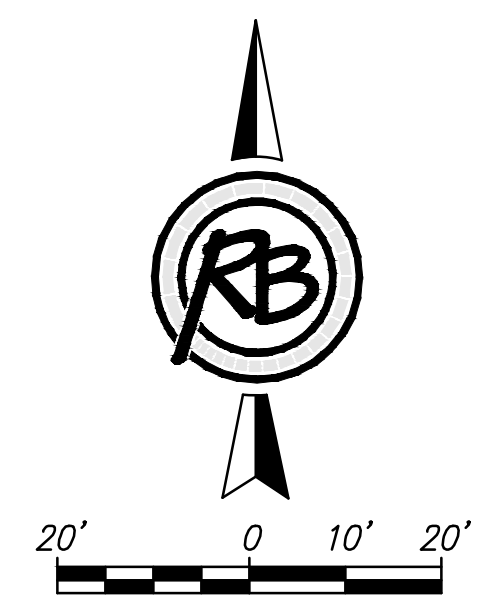
RB JOB: 4731E  
SHEET: 5 OF 19



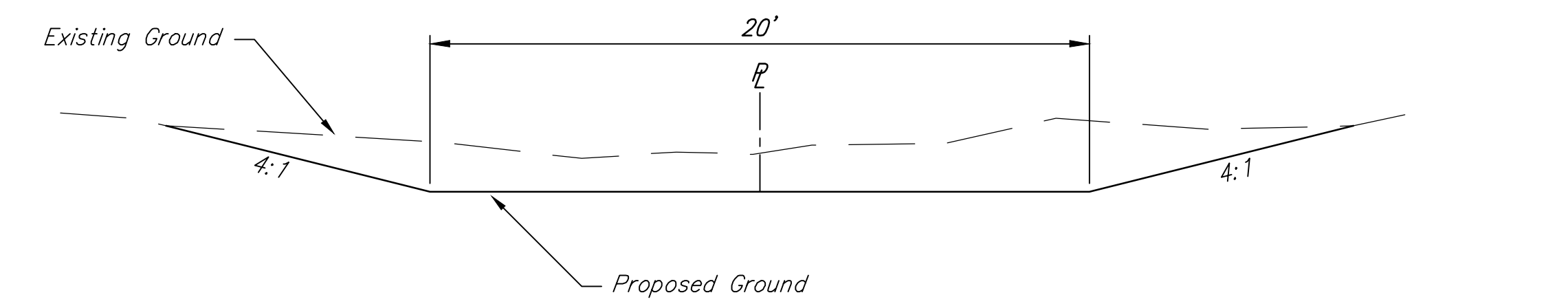
SS Line 2 PROFILE



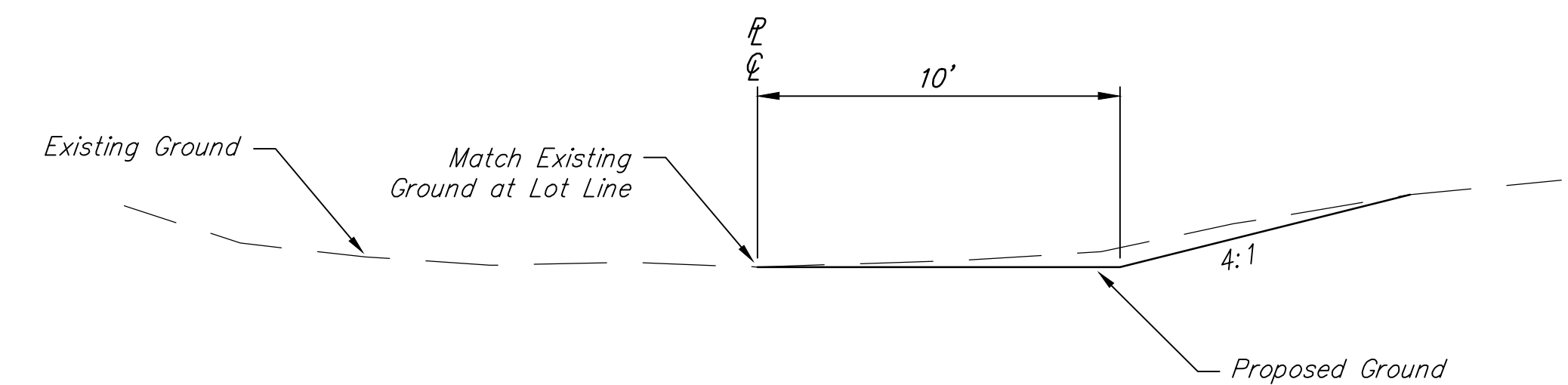
NOTE:  
 In the Easement shared by Lots 10-25, Block 8, the Contractor shall match the existing ground at the center of the easement and create positive drainage, such that no water ponding will occur. (Section C-C)



Section A-A  
 No Scale



Section B-B  
 No Scale



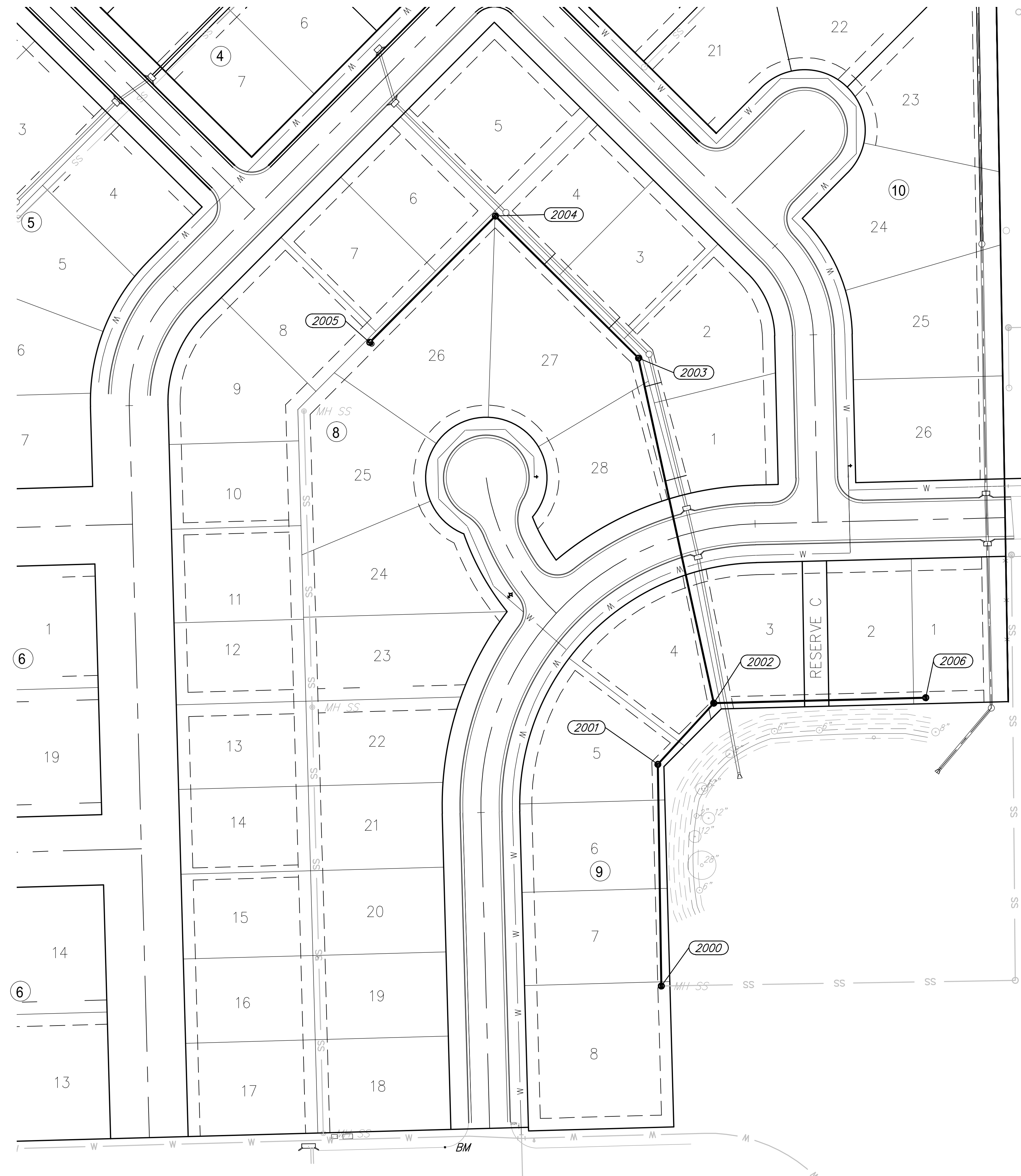
Section C-C  
 No Scale

Earthwork Quantity Estimate

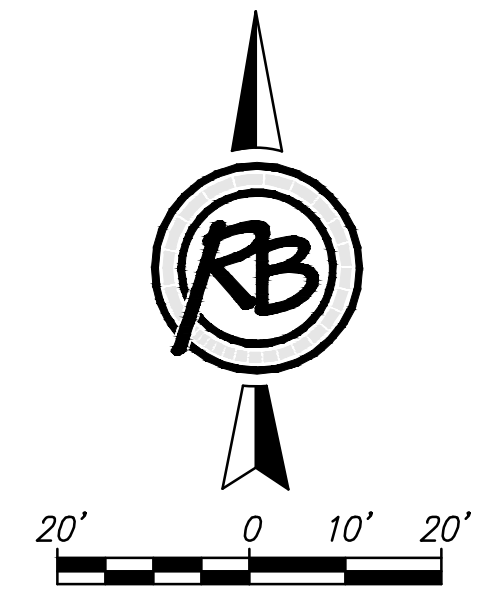
Excavation	Compacted Fill	Net
982 C.Y.	17 C.Y.	965 C.Y. Cut

**Cheryl's Hollow, 2nd Addition  
 Easement Grading**

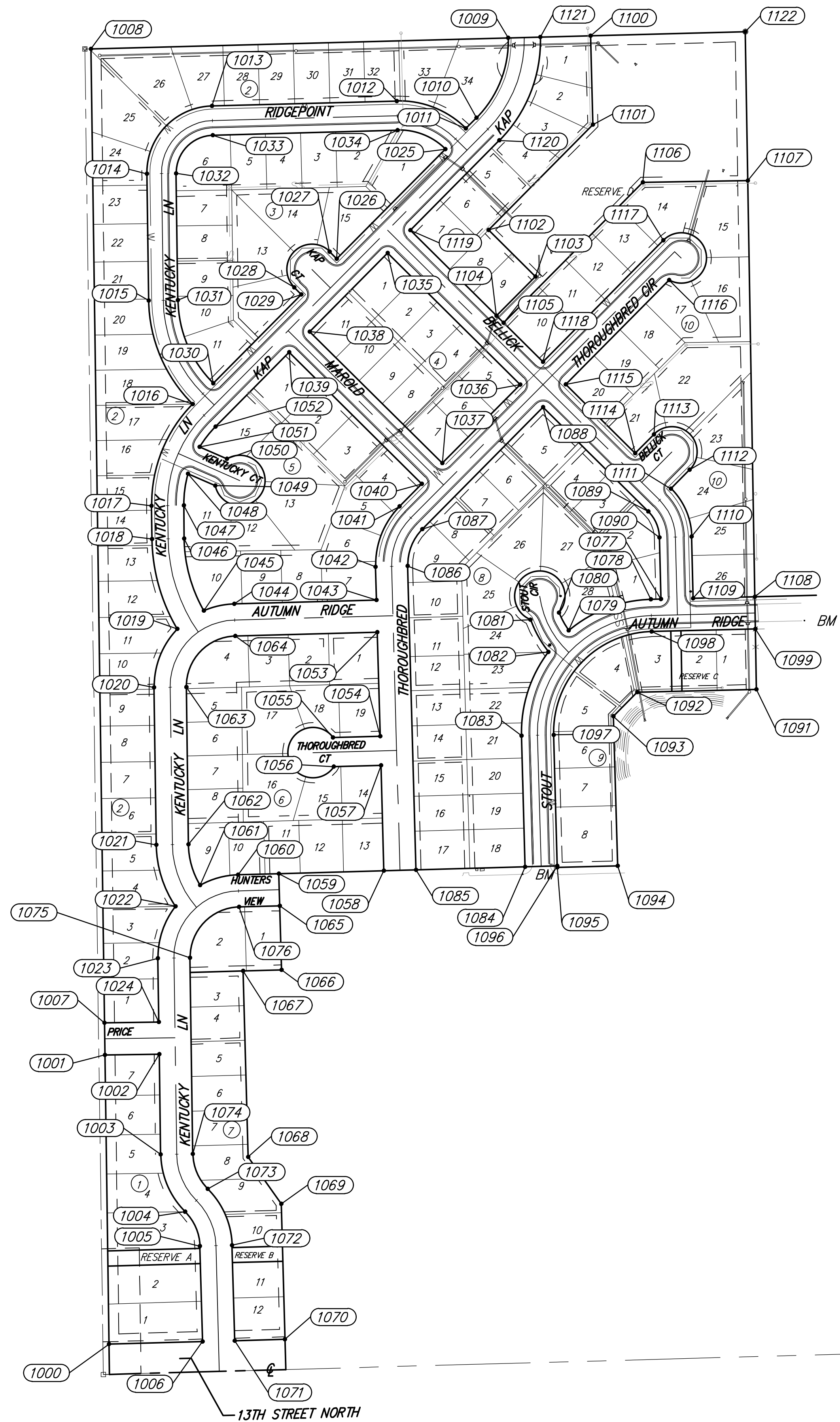
		<small>DATE</small> <b>July 2016</b>
	<small>ENGINEERING   SURVEYING   LANDSCAPE ARCHITECTURE   GOVERNMENT</small> <small>924 NORTH MAIN WICHITA, KANSAS 67203 P (316) 264-8008 F (316) 264-4821</small> <small>WWW.RUGGLESANDBOHM.COM</small>	<small>DESIGN</small> <b>KWL</b>
<small>PROJECT NUMBER</small> <b>468-84189</b>	<small>RIB JOB NO.</small> <b>4731E</b>	<small>DWG. SCALE</small> <b>50</b>
<small>DRAWING FILE</small> <b>07 - Easement Grading Plan [Easement Grading]</b>	<small>SHEET</small> <b>7</b>	<small>OF</small> <b>19</b>



Point Table			
Point #	Northing	Easting	Description
2000	1694190.59	1600506.03	MH
2001	1694373.72	1600503.16	MH
2002	1694424.25	1600549.40	MH
2003	1694709.05	1600487.19	MH
2004	1694826.38	1600368.86	MH
2005	1694720.59	1600266.78	MH
2006	1694428.60	1600724.26	MH



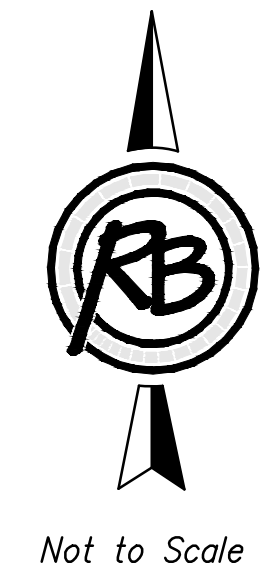
<b>Cheryl's Hollow, 2nd Addition Bubble Map</b>				
	<b>RUGGLES &amp; BOHM</b>		DATE July 2016	
	ENGINEERING   SURVEYING   LANDSCAPE ARCHITECTURE   GOVERNMENT 924 NORTH MAIN WICHITA, KANSAS 67203 P (316) 264-8008 F (316) 264-4821 WWW.RBANSAS.COM		DESIGN KWL	
	PROJECT NUMBER 468-84189	RB JOB NO: 4731E	DWG. SCALE 50	DRAWN CDJ
	DRAWING FILE 07 - Bubble Map [Bubble Map]			REVIEW June 2016
			SHEET 17 OF 19	



Point Table			
Point #	Northing	Easting	Description
1000	1693122.98	1599504.70	Add. Corner
1001	1693698.20	1599496.67	Prop. Corner
1002	1693699.71	1599604.66	Prop. Corner
1003	1693500.50	1599607.44	PC
1004	1693386.30	1599655.98	PCC
1005	1693318.02	1599685.55	PT
1006	1693128.09	1599690.76	Prop. Corner
1007	1693762.19	1599495.78	Prop. Corner
1008	1695699.01	1599468.75	Add. Corner
1009	1695720.85	1600298.67	Prop. Corner
1010	1695561.91	1600235.66	PT
1011	1695540.57	1600214.50	Prop. Corner
1012	1695594.99	1600077.25	PT
1013	1695585.31	1599709.71	PC
1014	1695450.50	1599580.23	PT
1015	1695198.43	1599583.75	PC
1016	1694992.66	1599671.17	Prop. Corner
1017	1694790.16	1599589.44	PT
1018	1694724.11	1599590.36	PC
1019	1694545.21	1599640.54	Prop. Corner
1020	1694428.96	1599594.48	PT
1021	1694116.12	1599598.85	PC
1022	1693993.87	1599636.97	Prop. Corner
1023	1693890.32	1599602.00	PT
1024	1693763.70	1599603.77	Prop. Corner
1025	1695499.39	1600173.66	Prop. Corner
1026	1695281.52	1599957.61	Prop. Corner
1027	1695295.60	1599943.41	PC
1028	1695224.59	1599873.00	PT
1029	1695210.51	1599887.20	Prop. Corner
1030	1695033.85	1599712.01	Prop. Corner
1031	1695199.24	1599641.74	PT
1032	1695451.31	1599638.22	PC
1033	1695527.33	1599711.24	PT
1034	1695537.01	1600078.77	PC
1035	1695292.83	1600058.96	Prop. Corner
1036	1695031.25	1600322.74	Prop. Corner
1037	1694875.03	1600167.84	Prop. Corner
1038	1695136.61	1599904.05	Prop. Corner
1039	1695095.43	1599863.21	Prop. Corner
1040	1694833.85	1600127.00	Prop. Corner
1041	1694788.84	1600082.37	PC
1042	1694668.86	1600034.88	PT
1043	1694602.95	1600036.69	Prop. Corner
1044	1694595.18	1599753.97	PC
1045	1694581.75	1599693.33	Prop. Corner
1046	1694725.00	1599654.36	PT
1047	1694791.06	1599653.44	PC
1048	1694854.16	1599661.85	Prop. Corner
1049	1694830.38	1599716.18	Prop. Corner

Point Table			
Point #	Northing	Easting	Description
1050	1694883.52	1599739.43	Prop. Corner
1051	1694907.29	1599685.11	Prop. Corner
1052	1694947.60	1599716.62	PT
1053	1694538.97	1600038.45	Prop. Corner
1054	1694332.05	1600044.13	Prop. Corner
1055	1694329.47	1599950.11	Prop. Corner
1056	1694271.49	1599951.70	Prop. Corner
1057	1694274.07	1600045.72	Prop. Corner
1058	1694064.52	1600051.48	Prop. Corner
1059	1694058.78	1599842.56	Add. Corner
1060	1694056.55	1599761.48	PC
1061	1694035.84	1599686.10	Prop. Corner
1062	1694117.01	1599662.84	PT
1063	1694429.85	1599658.48	PC
1064	1694531.21	1599755.72	PT
1065	1693994.80	1599844.31	Prop. Corner
1066	1693867.48	1599847.81	Add. Corner
1067	1693865.39	1599771.46	Add. Corner
1068	1693495.48	1599781.62	Add. Corner
1069	1693401.99	1599847.30	Add. Corner
1070	1693132.60	1599854.70	Add. Corner
1071	1693129.85	1599754.74	Prop. Corner
1072	1693319.78	1599749.52	PC
1073	1693431.76	1599701.03	PCC
1074	1693501.39	1599671.43	PT
1075	1693891.22	1599665.99	PC
1076	1693992.58	1599763.24	PT
1077	1694604.63	1600602.54	Prop. Corner
1078	1694604.13	1600582.55	PC
1079	1694542.20	1600419.12	Prop. Corner
1080	1694577.83	1600399.62	Prop. Corner
1081	1694563.72	1600343.00	Prop. Corner
1082	1694499.64	1600378.68	Prop. Corner
1083	1694332.97	1600325.21	PT
1084	1694072.23	1600332.37	Prop. Corner
1085	1694066.27	1600115.45	Prop. Corner
1086	1694670.62	1600098.86	PC
1087	1694743.78	1600127.81	PT
1088	1694986.18	1600368.19	Prop. Corner
1089	1694778.80	1600577.32	PC
1090	1694727.41	1600599.49	PT
1091	1694425.29	1600792.32	Add. Corner
1092	1694419.40	1600555.45	Add. Corner
1093	1694371.72	1600508.22	Add. Corner
1094	1694074.28	1600516.38	Add. Corner
1095	1694070.99	1600396.43	Add. Corner
1096	1694073.99	1600396.35	Add. Corner
1097	1694334.73	1600389.19	PC
1098	1694540.15	1600584.14	PT
1099	1694545.28	1600790.30	Prop. Corner

Point Table			
Point #	Northing	Easting	Description
1100	1695725.17	1600462.43	Prop. Corner
1101	1695548.18	1600467.09	Prop. Corner
1102	1695338.92	1600259.58	Prop. Corner
1103	1695246.34	1600352.95	Prop. Corner
1104	1695168.23	1600275.50	Prop. Corner
1105	1695154.15	1600289.70	Prop. Corner
1106	1695433.41	1600566.62	Prop. Corner
1107	1695436.92	1600775.28	Prop. Corner
1108	1694609.27	1600789.22	Prop. Corner
1109	1694606.22	1600666.52	Prop. Corner
1110	1694729.00	1600663.47	PC
1111	1694824.25	1600622.39	Prop. Corner
1112	1694861.88	1600659.70	PC
1113	1694932.29	1600588.70	PT
1114	1694894.66	1600551.38	Prop. Corner
1115	1695031.63	1600413.25	Prop. Corner
1116	1695239.02	1600618.91	Prop. Corner
1117	1695318.17	1600607.26	PT
1118	1695076.69	1600367.81	Prop. Corner
1119	1695338.27	1600104.02	Prop. Corner
1120	1695516.85	1600281.11	PC
1121	1695722.54	1600362.65	Prop. Corner
1122	1695733.27	1600770.29	Add. Corner



### Cheryl's Hollow, 2nd Addition Addition Bubble Map

**RUGGLES & BOHM**

ENGINEERING | SURVEYING | LANDSCAPE ARCHITECTURE | GOVERNMENT

924 NORTH MAIN WICHITA, KANSAS 67203 P (316) 264-8008 F (316) 264-4621  
WWW.RUGGLESANDBOHM.COM

DATE: July 2016  
DESIGN: KWL  
DRAWN: CDJ  
REVIEW: JUNE 2016  
SHEET: 10

PROJECT NUMBER: 468-84189

DRAWING FILE: Addition Bubble Map [Addition Bubble Map]

REV. NO.: 4731E

DWG. SCALE: ...

