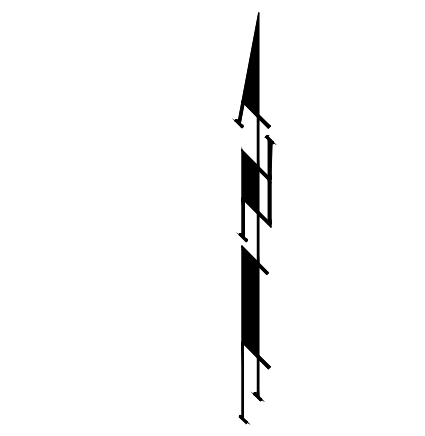


BENCHMARKS:
 BM #1: Chiseled Square, Center of Storm Water Sewer Vault, West Side of Meridian Ave., 145' South and 30.6' East of the Northeast Cor., Lot 1, Block A, Northgate 2nd Addition
 Elev. = 1334.49 NAVD88

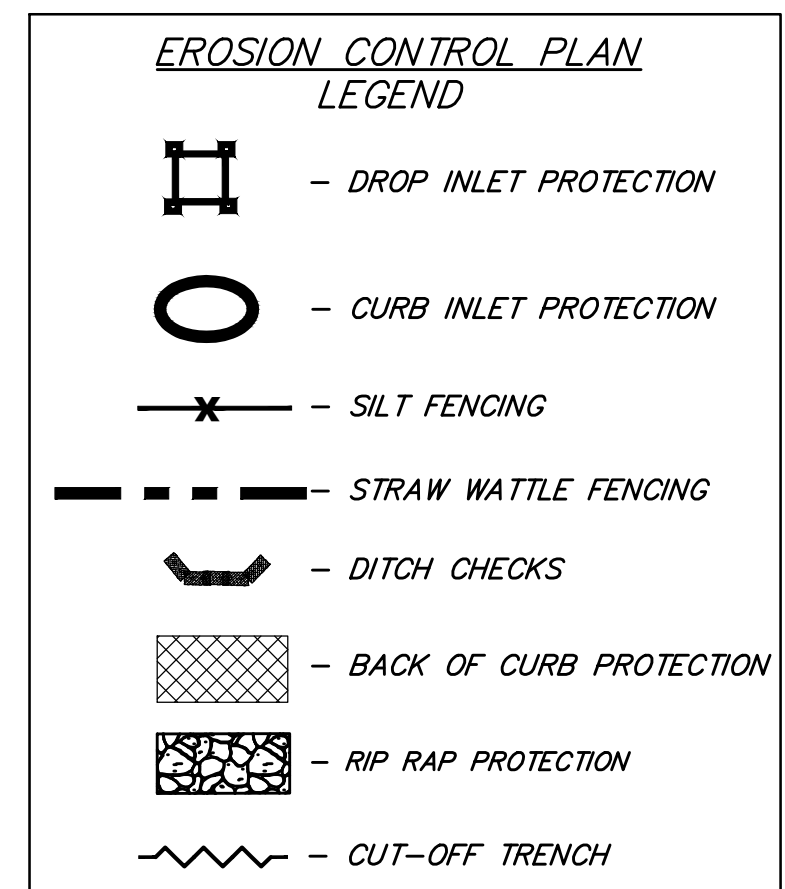
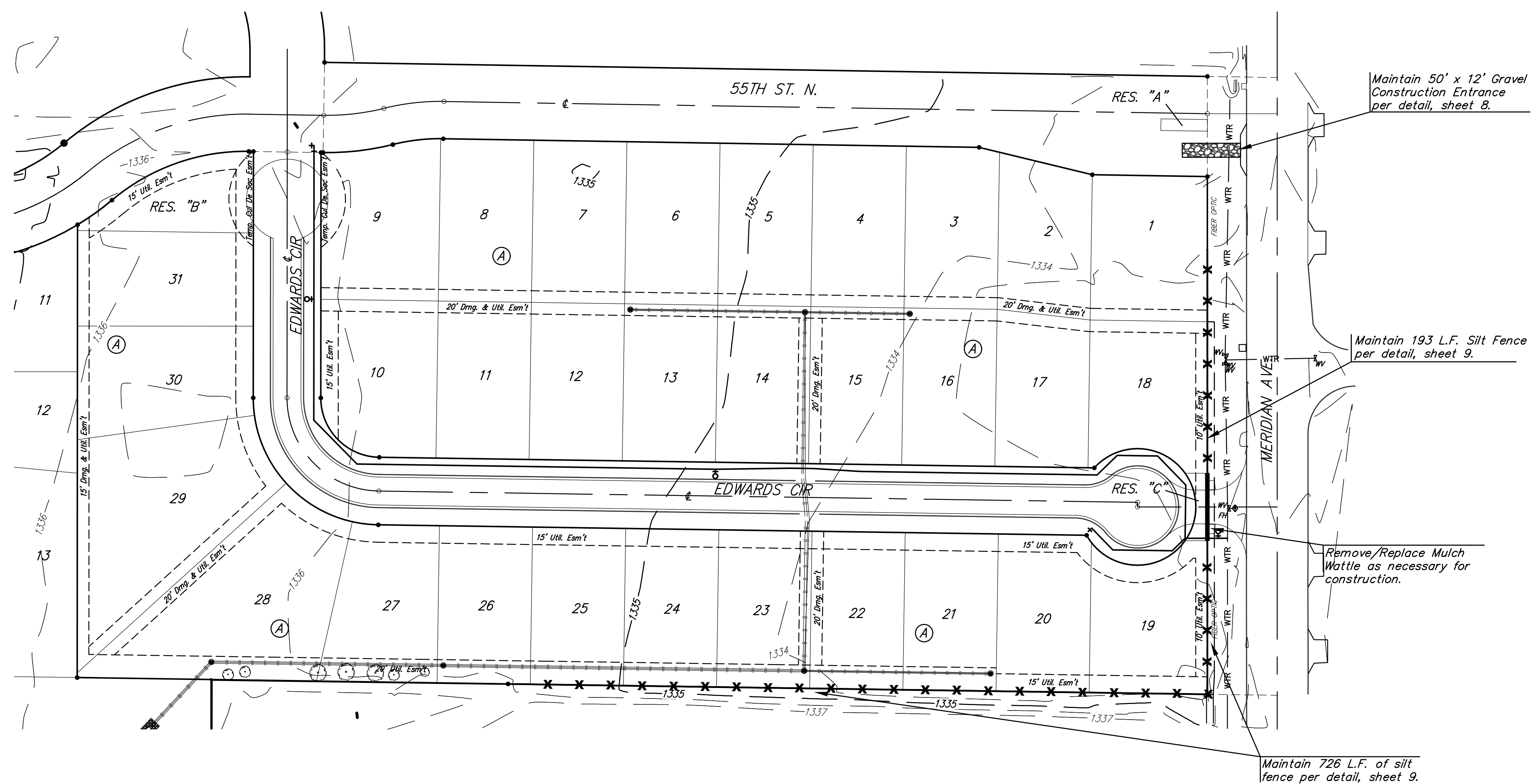
BM #2: "X" on South End of Catch Basin, East Side of Meridian Ave., 423' South of 55th St. N. & 30' East of Meridian Ave. centerline
 Elev. = 1332.58 NAVD88



Scale: 1" = 60' (Hor.)

• = Iron

Existing Ground -1364-



NOTES:
 Contractor shall make sure all erosion control is in place before project is accepted. This plan represents the minimum standard. Any additional erosion control measures shall be installed by the Contractor as needed.

All areas disturbed during construction shall be seeded, mulched, and fertilized as per Cover Sheet General Notes.

EROSION CONTROL MEASURE	INSTALL	MAINTAIN
CUT-OFF TRENCH (LF)	0	0
CONSTRUCTION ENTRANCE (EA)	0	1
CURB INLET PROTECTION (EA)	0	0
DITCH CHECK (EA)	0	0
DROP INLET PROTECTION (EA)	0	0
EROSION CONTROL (LS)	0	0
MULCH WATTLES (LF)	0	58
SILT FENCE (LF)	0	919
EROSION CONTROL MAT (SY)	0	0
MAINTAIN EROSION CONTROL BMP's (LS)	0	0

* ALL EXISTING BMPs INCLUDING CONSTRUCTION ENTRANCE, SEDIMENT BARRIERS, SILT FENCE, CUT-OFF TRENCH, AND EROSION CONTROL MAT SHALL BE MAINTAINED AND REPAIRED IF NECESSARY.

Baughman

ENGINEERING | SURVEYING | PLANNING | LANDSCAPE ARCHITECTURE

Northgate 2nd Addition
EROSION CONTROL PLAN
 Water Distribution System

PROJECT NUMBER: 448-90749

REVISIONS:

DESIGN: AEG

DRAWN: DJL

APPROVED: DATE 9/16

SCALE: Noted

SHEET

7 OF 14

