

# STREET PAVING FOR GOLDEN HILLS

to serve

## FLAT CREEK ADDITION - PHASE II

CITY OF WICHITA, KANSAS

Neil Cable, P.E. City Engineer

**GOLDEN HILLS:** From the South Line of Lot 2, Block F,  
South to the East Line of Milstead.  
**MILSTEAD:** From the East Line of Lot 24, Block B,  
East to the East Line of Lot 17, Block D.  
**GRANT:** From the West Line of plat, East to  
the East Line of Milstead.  
**GRANT CT.:** (Lots 20 through 30, Block C),  
From the North Line of Grant,  
North to and including the Cul-de-Sac.  
**GRANT CT.:** (Lots 8 through 14, Block D),  
From the South Line of Grant,  
South to and including the Cul-de-Sac.  
**GOLDEN HILLS CT.:** From the East Line of Golden Hills,  
East to and including the Cul-de-Sac.

### GENERAL NOTES:

1. Contractor will be required to provide notice to utility companies a minimum of twenty-four (24) hours prior to any excavation, as follows:

Kansas One-Call 687-2470

The Contractor must notify the following in case of an emergency:

Cox Communications	262-4270
Kansas Gas Service	1-888-482-4950
Westar Energy	383-8650
Aquila Energy	1-888-482-4950
Southwestern Bell	268-2245
City of Wichita Water Dept.	268-4563
City of Wichita Sewer Maint.	268-4024
City of Wichita Storm Sewer Maint.	268-4090
City of Wichita Traffic Maint.	268-4034
Conoco Pipeline Co.	1-800-231-2551
Williams Pipeline Co.	529-6600
Phillips Pipeline Co.	1-800-766-8230

2. Utility service lines, poles, valve boxes, meters, and etcetera are to be adjusted as necessary by others prior to construction unless the plans specifically call for their adjustment by the Contractor or unless the plans specifically identify a utility to be adjusted by its owner during construction. Existing utilities and their location, as shown on the plans, represent the best information obtainable for design. The Contractor will be required to work around existing utilities within the right-of-way which do not conflict with proposed construction.

3. Rubble from the removal of miscellaneous structures and excess excavation which is to be wasted shall be disposed of on sites to be provided by the Contractor. These sites shall be approved by the Engineer as to suitability, appearance on site location. Locations, in the opinion of the Engineer, will leave an unsightly appearance will not be approved. All disposal sites must be approved by the Kansas Department of Health and Environment. Material either stockpiled or disposed of in a flood plain would require a Kansas State Board of Agriculture permit. Any material dumped in waters of the United States or wetlands is subject to U.S. Corps. of Engineers permitting regulations. Any material buried or stockpiled beyond approved construction limits would require additional archaeological investigations unless buried in a previously approved borrow location.

4. Trees and shrubs in public right-of-way which are in direct conflict with proposed new construction shall be removed by the Contractor with the Engineer's approval. Trees and shrubs which are not in direct conflict with proposed new construction shall be saved and protected from damage.

5. The Contractor shall give all property owners and/or tenants of developed property abutting the construction of this project a minimum of ten (10) days advance notice prior to start of construction.

6. The Contractor shall be responsible for preserving property irons. The Contractor will be required to re-establish any property irons which are damaged or destroyed by his construction operations. Such irons shall be re-established by a licensed land surveyor in accordance with state laws.

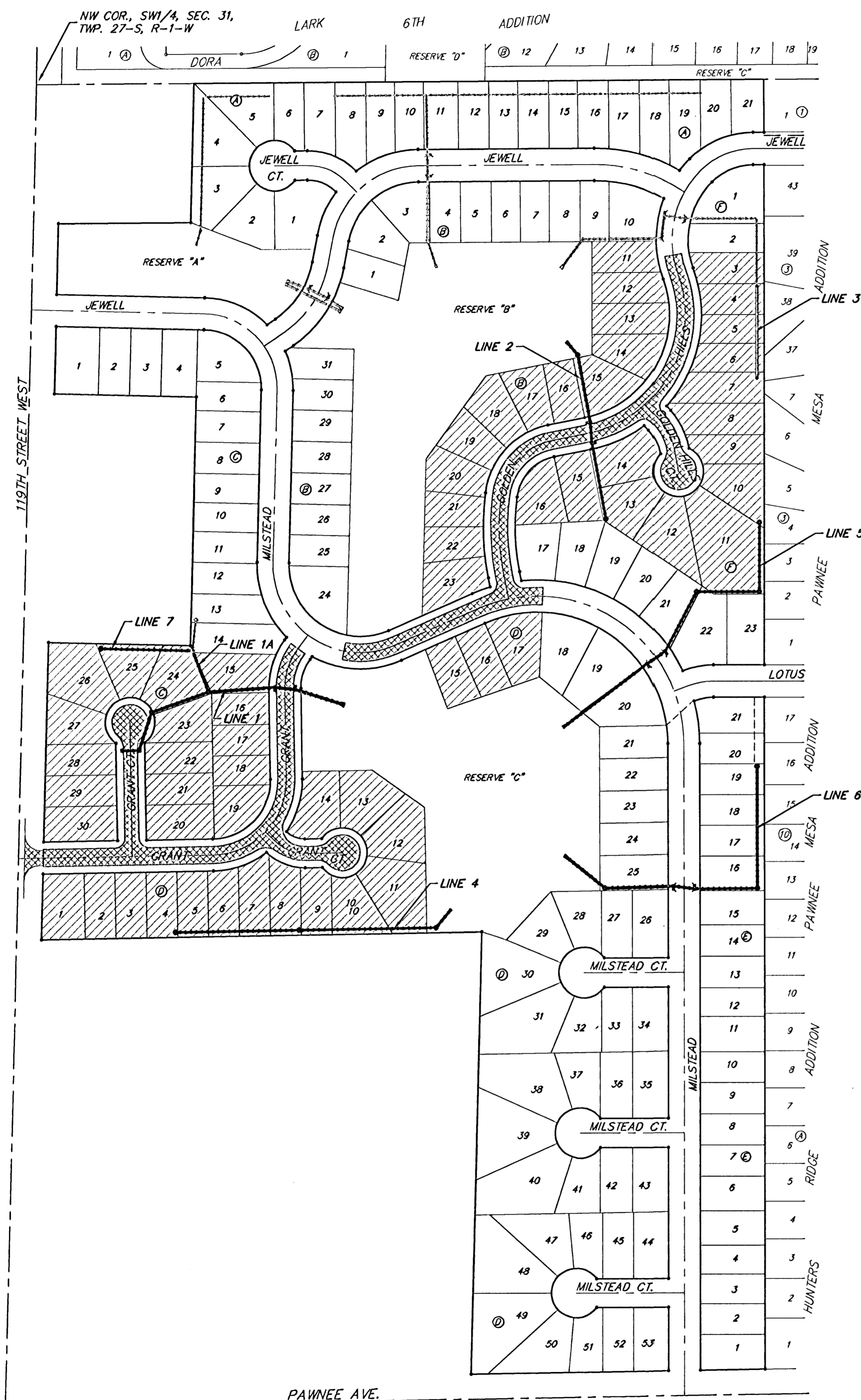
7. A saw cut of at least one-half the depth of existing surface courses or one-fourth the depth of the existing total pavement thickness shall be provided at locations where proposed construction abuts an existing surface course or pavement for which partial removal of that surface or pavement is required. Sawed joint to facilitate removal within three (3) feet of existing joints will not be permitted and for such instances the limits of removal shall extend to the existing joint. Such saw cuts will not be paid for directly and this cost shall be considered as subsidiary to the removal of the surface or pavement.

8. All areas disturbed in Reserves "B" & "C" and Street R/W during construction shall be seeded, mulched, and fertilized as follows (Permanent Seeding):

Seed: Rye Grass: 5 lbs./1000 Sq. Ft.  
Kansas Premium Fescue Blend: 3 lbs./1000 sq. ft.  
Mulch: Prairie Hay: 2 tons/acre  
Fertilizer: 12-24-12: 850 lbs./acre

All costs associated with seeding, mulching, and fertilizing shall be included in bid item "Project Seeding." All seeding operations shall conform to City of Wichita Standard Specifications.

9. Easement Grading shall be completed with this project as shown on the Easement Grading Plan.



Scale: 1" = 150'

### Sheet Index

Title Sheet	1
35' Pavement Detail	2
29' Pavement Detail	3
Sign Detail	4
Valley Gutter Details	5
Grant	6-7
Milstead	8
Golden Hills	9-10
Golden Hills Ct.	11
Grant Ct. (Lots 20 through 30)	12
Grant Ct. (Lots 8 through 14)	13
Line 1	14
Line 1A & 2	15
Line 3	16
Line 4	17
Line 5	18-19
Line 6	20-21
Line 7	22
Ditch Plan	23
Site Restoration	24
Easement Grading	25-26
Soil Erosion BMP's	27-28
Std. Type 1A Single Inlet Detail	29
Std. Type 1A Double Inlet Detail	30
Special Yard Inlet Detail	30A
Shallow Manhole Detail	31
Headwall Detail	32
Earthwork Cross Sections	33-42
Copy of Plat	43

Project Earthwork Totals  
Excavation = 3028 C.Y.  
Loose Fill = 971 C.Y.  
Compacted Fill = 560 C.Y.

\*NOTE: Project Earthwork Totals are for information only

Total Project Length  
2760 L.F. = 0.52 Miles

Benefit District: [Hatched Box]

Proposed Streets: [Cross-hatched Box]

Project Number

**472-83384**

O.C.A. Number

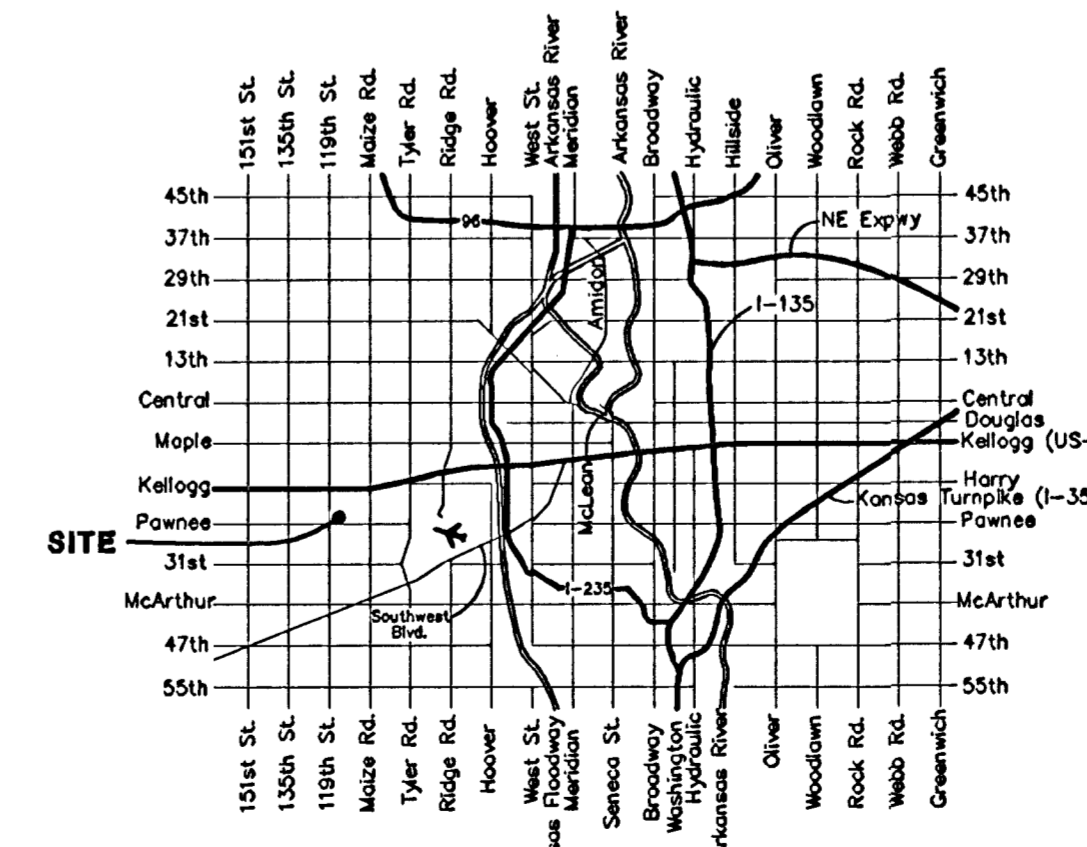
**765743**

### Benchmark

BM #1: "□" Cut in top of curb, east return of SE corner of Lotus & Parkridge.  
Elev. = 145.99 (City Datum)

BM #2: "X" Cut on walk at NW corner of Lot 1, Block F, Flat Creek Addition  
Elev. = 146.22 (City Datum)

BM #3: "□" Cut in top of curb at the NW corner of Lot 1, Block B, Hunter's Ridge Addition.  
Elev. = 146.63 (City Datum)



Vicinity Map

BOOKED  
9-23-03  
MCG  
C-253

