

BENCHMARKS:

BM #1: "□" Cut in top of curb, east return of SE corner of Lotus & Parkridge.
Elev. = 145.99 (City Datum)

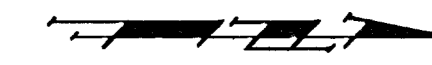
BM #2: "X" Cut on walk at NW corner of Lot 1, Block F, Flat Creek Addition
Elev. = 146.22 (City Datum)

BM #3: "□" Cut in top of curb at the NW corner of Lot 1, Block B, Hunter's Ridge Addition.
Elev. = 146.63 (City Datum)

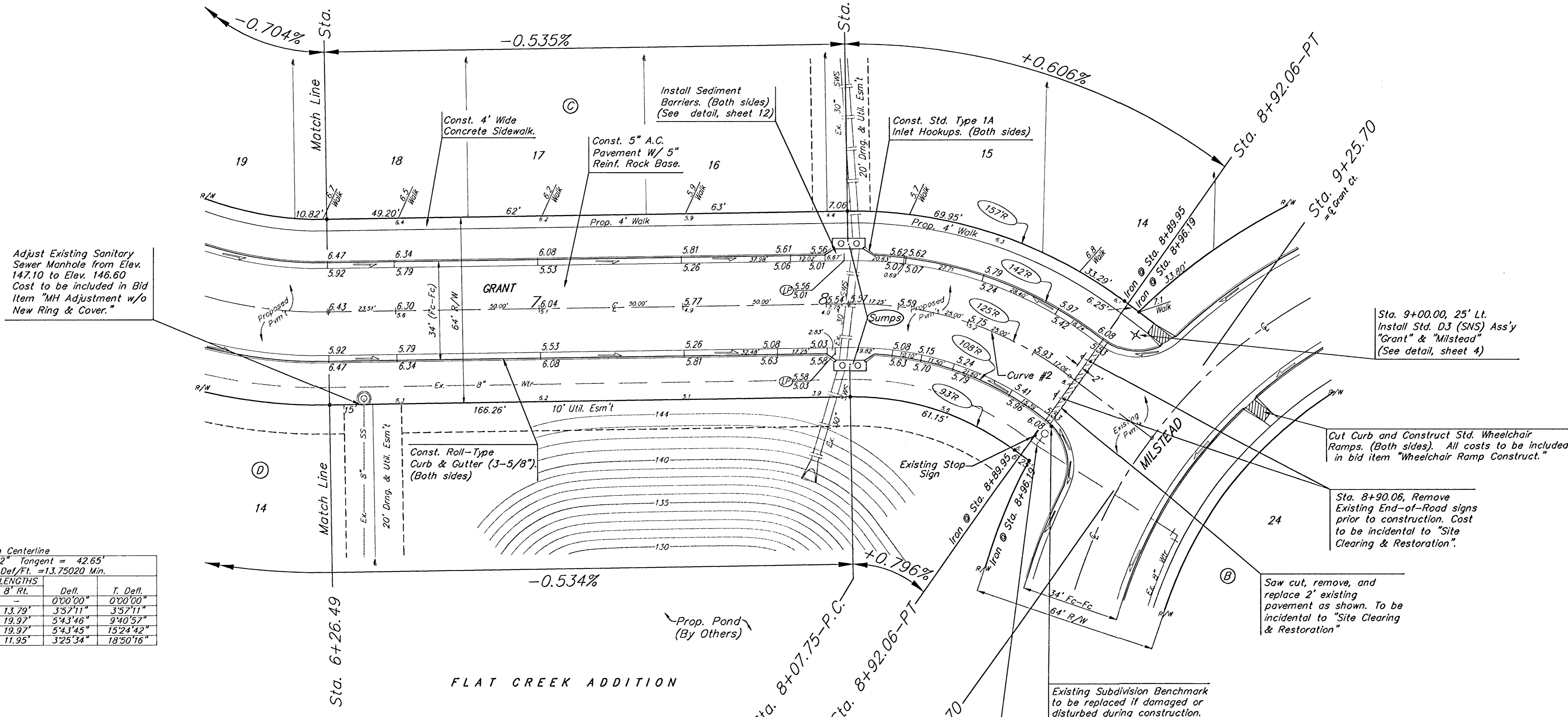
P.V.I.
Elev. = 145.50
40' V.C.

P.V.I.
Elev. = 146.47
NO V.C.

FLAT CREEK ADDITION



Scale: 1" = 20'
• = Iron



Adjust Existing Sanitary Sewer Manhole from Elev. 147.10 to Elev. 146.60
Cost to be included in Bid Item "MH Adjustment w/o New Ring & Cover."

Sta. 9+00.00, 25' Lt. Install Std. D3 (SNS) Ass'y "Grant" & "Milstead" (See detail, sheet 4)

Cut Curb and Construct Std. Wheelchair Ramps. (Both sides). All costs to be included in bid item "Wheelchair Ramp Construct."

Sta. 8+90.06, Remove Existing End-of-Road signs prior to construction. Cost to be incidental to "Site Clearing & Restoration".

Saw cut, remove, and replace 2' existing pavement as shown. To be incidental to "Site Clearing & Restoration"

Existing Subdivision Benchmark to be replaced if damaged or disturbed during construction.

Valve Box
Elev. = 146.60

Curve #2
Curve Data Based on Centerline
Rad. = 125' Delta = 37° 40' 32" Tangent = 42.65'
Arc = 82.20' L.C. = 80.72' Def/Ft. = 13.75020 Min.

Station	FACE CHORD LENGTHS			Defl.	T. Defl.
	8' Lt.	8' Rt.	8' Ch.		
8+07.75	-	-	-	0°00'00"	0°00'00"
8+25.00	17.25'	20.68'	13.79'	3°57'11"	3°57'11"
8+50.00	25.00'	29.95'	19.97'	5°43'46"	9°40'57"
8+75.00	25.00'	29.95'	19.97'	5°43'45"	15°24'42"
8+89.95	14.95'	17.93'	11.95'	3°25'34"	18°50'16"

Street & Station	Location Description	Elevation
Grant Ct 0+37.00, 14.25' Lt.	Adjacent to Fire Hydrant at north end of West Curb return on Grant Ct. (Lots 20-30, Block C).	
Grant 4+81.92, 17.25' Lt.	Adjacent to Fire Hydrant at southwest end of South Curb return at Grant & Grant Ct.	
Golden Hills 0+37.2, 17.25' Lt.	Adjacent to Fire Hydrant on the north end of West Curb return on Lot 23, Block B.	
Golden Hills 6+01.00, 17.25' Rt.	Adjacent to Fire Hydrant at northeast end of North return on Golden Hills & Golden Hills Ct.	

NOTE: ROLL TYPE CURB & GUTTER TO BE CONSTRUCTED ON THE PAVEMENT SHOWN ON THIS SHEET. TOP OF CURB ELEVATIONS ARE GIVEN FOR FULL HEIGHT CURB.

FLAT CREEK ADDITION -PHASE II
GRANT
STA. 8+28.49 TO STA. 9+25.70

BAUGHMAN COMPANY P.A.
ENGINEERING, SURVEYING, & PLANNING
318-262-7271 • 315 ELLIS • WICHITA, KANSAS 67211

PROJECT NUMBER
472-83384

DESIGN: MBW DRAWN: ESB/GNX APPROVED: DATE: 8/21/02 SCALE: NOTED SHEET: **7** OF **43**