

GENERAL NOTES:

1. Contractor will be required to provide notice to utility companies a minimum of twenty-four (24) hours prior to any excavation, as follows:

Kansas One-Call (316)687-2470

The Contractor must notify the following in case of an emergency:

Cox Communications (316)262-4270
or (316)263-2061

Westar Energy/
Kansas Gas & Electric Company (800)482-4950
AT&T 1-555-1212
City of Wichita Water Department (316)268-4908
City of Wichita Sewer Department (316)268-4071
Aquila Natural Gas (316)941-1608
or (800)303-0357

2. Exist. utilities and their locations, as shown on the plans, represent the best information attainable for design. Location information has been obtained from the various utility companies and is either from company record drawings or company-provided field locations. The Contractor will be required to work around existing utilities which do not conflict with proposed constructions.

3. The Contractor to verify utility locations prior to construction of this project.

4. Utility service and installation shall be coordinated with the respective utility owner. Contacts are:

Kansas Gas Service Jim Coe (316)832-3126
Westar Energy Miles Capps (316)261-6251
Aquila Networks Calvin Briggs (316)942-8811
Wichita Water & Sewer Kerry Gibson (316)268-4555
AT&T Jim Taben (316)268-2759
Cox Communications Mark Anaya (316)262-4270

5. All lawn/turf areas disturbed by construction of proposed improvements shall be restored with the same grass as existing. Restoration of disturbed areas shall include, but not limited to, soil preparation, fertilizing, seeding, mulching (all seeded areas, outside the limits of erosion mat placement), and/or reseeding, and installation of erosion control mat. All seeding work shall be in accordance with the City of Wichita Standard Specifications and the City of Wichita Administrative Regulations No. AR 6.5 which governs cleanup and respiration or replacement following construction, all cost for the soil preparation, seeding and mulching (all seeded areas, outside the limits of erosion mat placement) shall be paid for through the lump sum bid item for "Seeding." All seeded areas within eight feet of the back of new curb shall be covered with an approved erosion mat, which shall be paid for by the measured quantity bed item "Back of Curb Protection (8' wide)."

6. Traffic affected by the construction of this project shall be handled in accordance with the latest edition of the Manual on Uniform Traffic Control Devices.

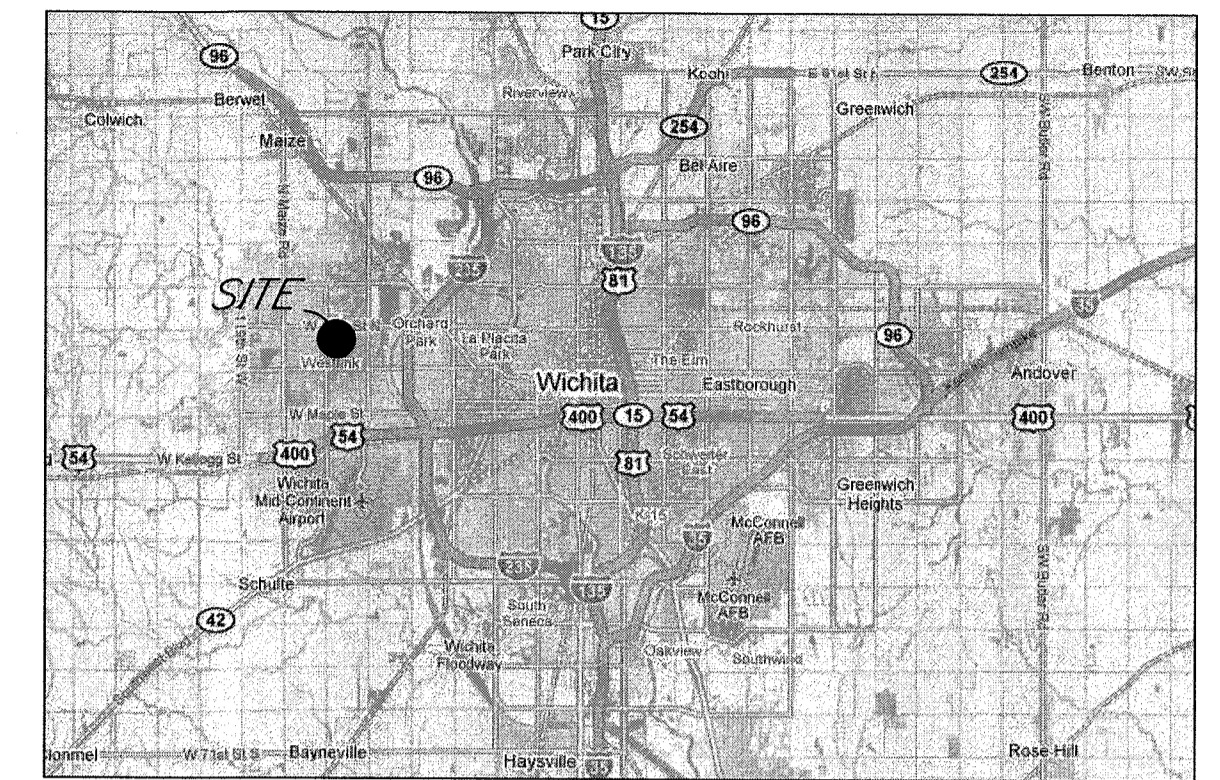
7. It is the contractor's responsibility to visit this site to better understand the extent of site clearing and restoration to be performed. Site Clearing and Restoration shall include all costs for removal of items which a pay item is not provided.

8. The contractor shall be responsible for preserving property irons. The contractor will be required to re-establish any property irons which are damaged or destroyed by the construction operations. Such irons shall be re-established by a licensed land surveyor in accordance with state laws.

9. Properties within the project limits may have underground sprinkler systems in public right-of-way which conflict with new construction. Contractor will be required to remove such improvements should they not be removed by their owner at the time of construction of the project. The contractor will be required to salvage all sprinkler heads and/or valves and give such material to owner. Portions of underground sprinkler systems not in conflict with new construction shall be protected from damage and shall remain in place. All work in connection with underground sprinkler systems shall be considered as subsidiary to the contract pay items for work.

10. Cuts made in paved surfaces on public property will be repaired by the City's Contractor and charged against the contractor. Unit Repair prices are available from the city at 268-4418. A surcharge may be applicable. Call 268-4418 for details. Repair costs to be paid prior to release of utility service if utilities are effected.

**LATERAL 135, Westlink SEWER
Tyler Pointe Addition
(East of Tyler, South of 13th St. N)
Project No. 468-84861
OCA: 744427
CITY OF WICHITA, KANSAS
Gary Janzen, P.E., City Engineer**

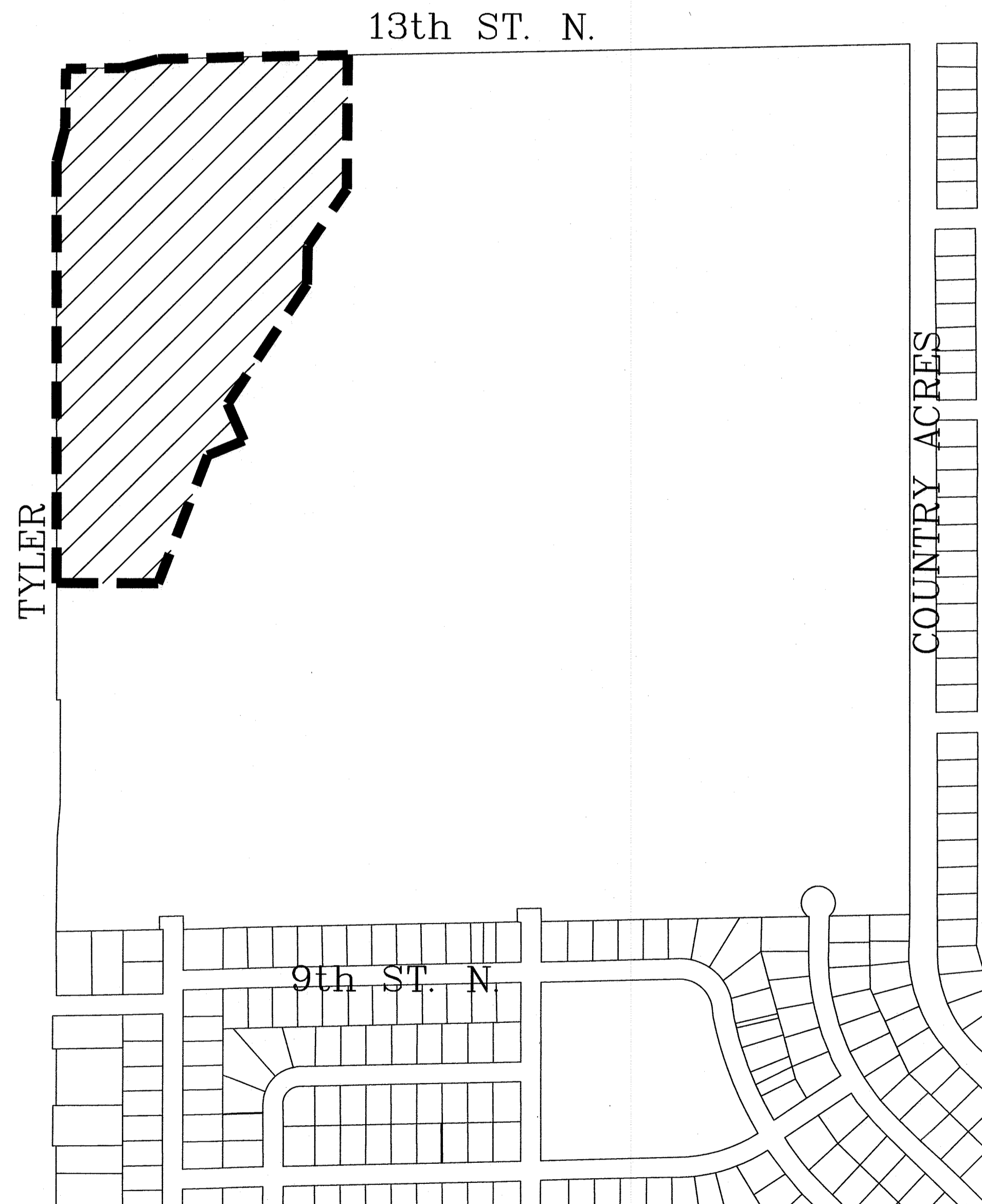


LOCATION MAP
(For Visual Use Only)

INDEX OF SHEETS:

- 1 Cover Sheet
- 2 Control Map/Plan Sheet
- 3 Plan and Profile
- 4 Standard Sanitary Details
- 5 Standard Sanitary Details
- 6 Erosion Control Plan
- 7 Erosion Details
- 8 Erosion Details
- 9 Erosion Details
- 10 Erosion Details
- 11 Erosion Details
- 12 Copy of Plat

Nowak Construction - Contractor
G. Baalman - City of Wichita, Field Project Engineer
T. Collins - City of Wichita, Inspector
As-built
Release Date: 02/21/2017
pdf: apr 02/23/2017



BENEFIT DISTRICTS:

Benefit Area

BENCHMARK:

City of Wichita disc located at the southwest corner of 13th and Tyler, approximately Elev. = 1356.41 NAVD88

APPROVED AS NOTED
BY WICHITA PUBLIC WORKS
ENGINEERING DIVISION

Engineering *Julianne Kellman 10-21-16*
Utilities *[Signature] 10-21-16*

NOTE TO CONTRACTORS

Installation, inspection and testing for this project is to be provided by a Licensed Consulting Engineering Firm under contract with the Owner/Developer. Said inspection to be in accordance with the City of Wichita standard construction engineering practices and certified by a Licensed Professional Engineer in the state of Kansas. No work shall be performed by the Contractor without such inspection nor shall any work be commenced without written authorization by the City Engineer. All Construction and Materials shall comply with the current City of Wichita Specifications and Standards and Special Provisions. (on file and available at Wichita.gov).

An approved copy of these plans signed by City staff are required on-site.

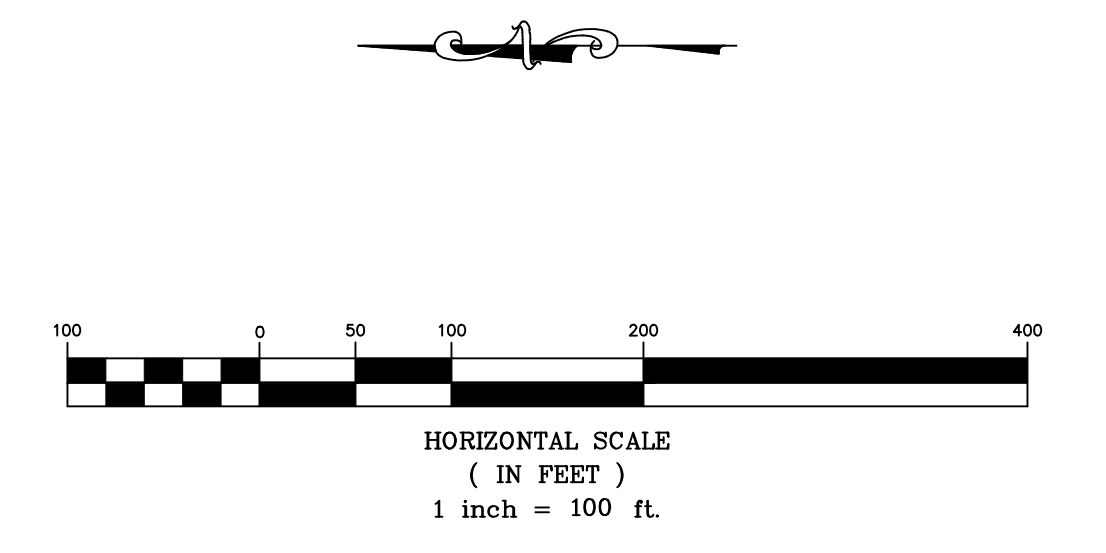
DATE: 10.11.2016
THIS SHEET HAS BEEN SIGNED, SEALED AND DATED ELECTRONICALLY

Revised: 11/17/2016

KEMILLER
ENGINEERING PA
117 E. Lewis, Wichita, KS 67202 (316)264-0242

October 2016

Point #	Northing	Easting	Desc.
1	1693437.27	1617810.77	Control Point
2	1693261.70	1617810.46	Control Point
3	1693161.66	1617785.85	Control Point
4	1691874.38	1617795.46	Control Point
5	1693466.15	1618657.99	Control Point
6	1691502.71	1617789.42	Sta 0+00.00 Line 1
7	1691902.70	1617792.56	Sta 4+00.00 Line 1
8	1692227.28	1617792.11	Sta 7+24.59 Line 1
9	1692543.44	1617791.68	Sta 10+40.75 Line 1
10	1692863.10	1617791.25	Sta 13+60.39 Line 1
11	1692863.12	1617905.29	Sta 14+74.44 Line 1
12	1693044.52	1618019.86	Sta 16+88.99 Line 1
13	1693269.80	1618162.14	Sta 19+55.43 Line 1

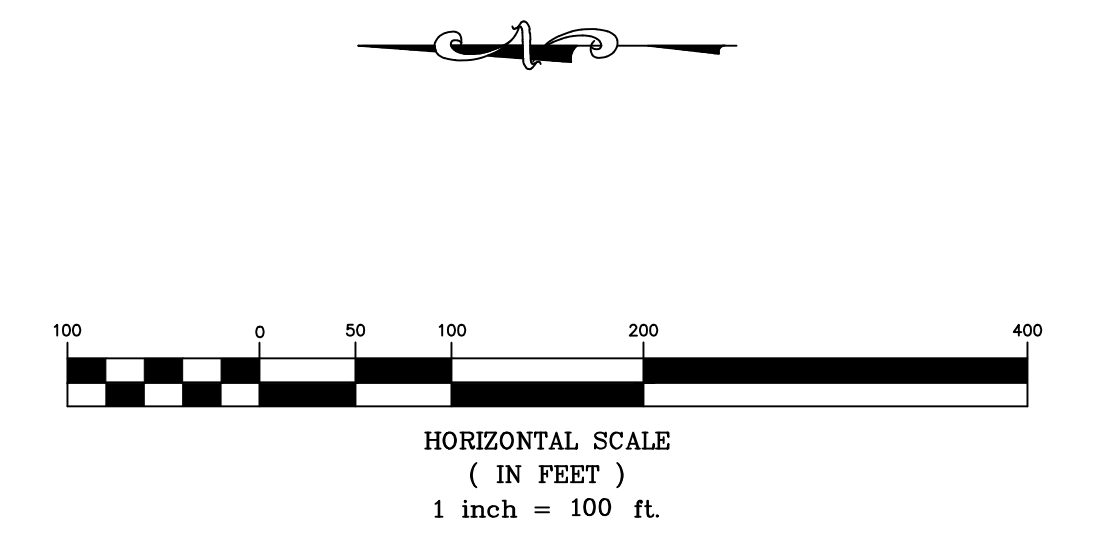


Tyler Point
Control Map/Plan Sheet
Wichita, Kansas


	PROJECT NUMBER 468-84861			SHEET 2
	KEM NO. 15212	FILE	DATE 02/2016	
DESIGN KM	DRAWN MP	REVISED		

March 15, 2016

Point #	Northing	Easting	Desc.
1	1693437.27	1617810.77	Control Point
2	1693261.70	1617810.46	Control Point
3	1693161.66	1617785.85	Control Point
4	1691874.38	1617795.46	Control Point
5	1693466.15	1618657.99	Control Point
6	1691502.71	1617789.42	Sta 0+00.00 Line 1
7	1691902.70	1617792.56	Sta 4+00.00 Line 1
8	1692227.28	1617792.11	Sta 7+24.59 Line 1
9	1692543.44	1617791.68	Sta 10+40.75 Line 1
10	1692863.10	1617791.25	Sta 13+60.39 Line 1
11	1692863.12	1617905.29	Sta 14+74.44 Line 1
12	1693044.52	1618019.86	Sta 16+88.99 Line 1
13	1693269.80	1618162.14	Sta 19+55.43 Line 1

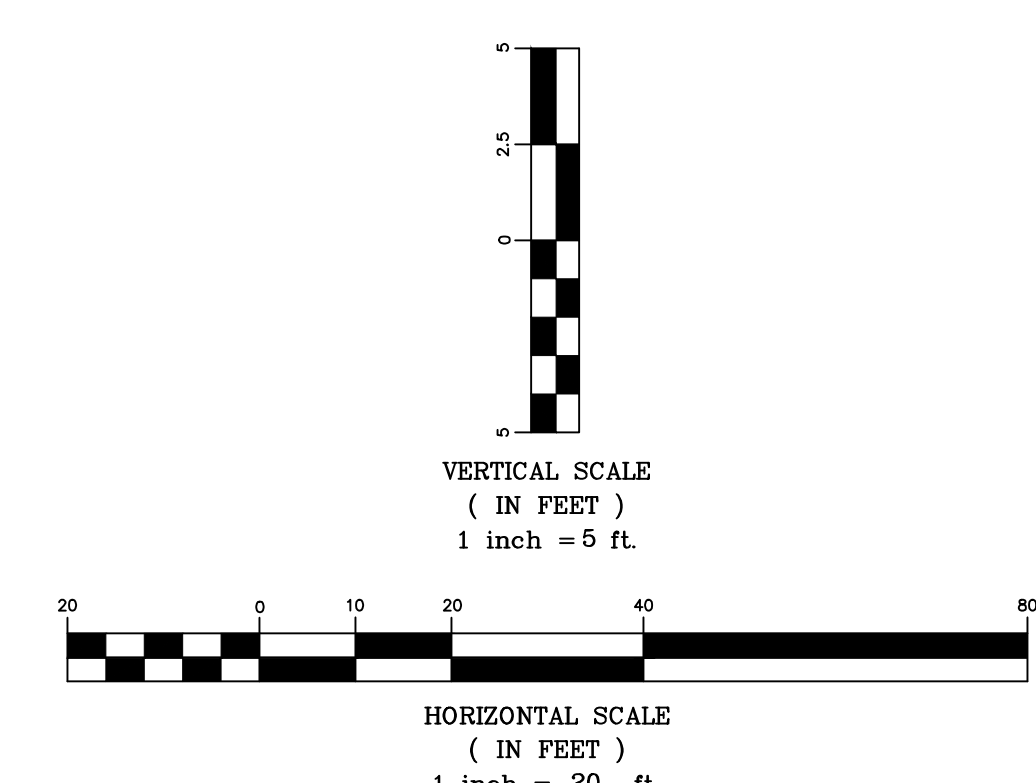
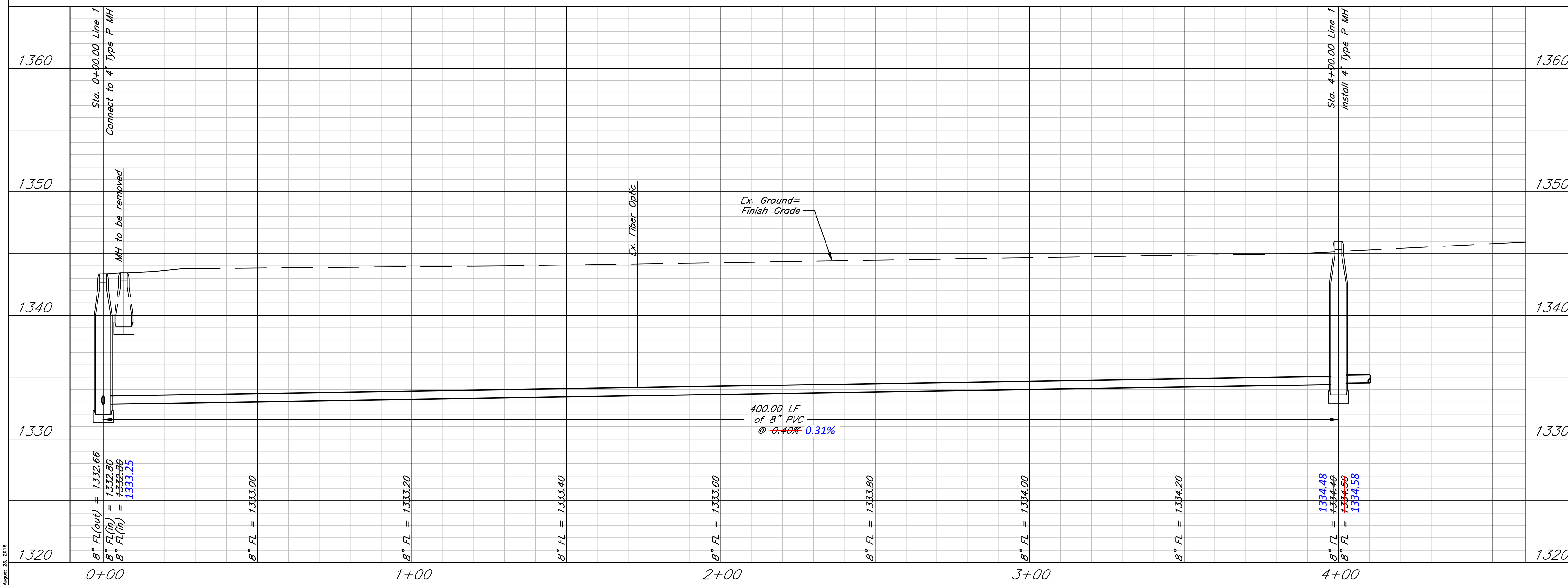
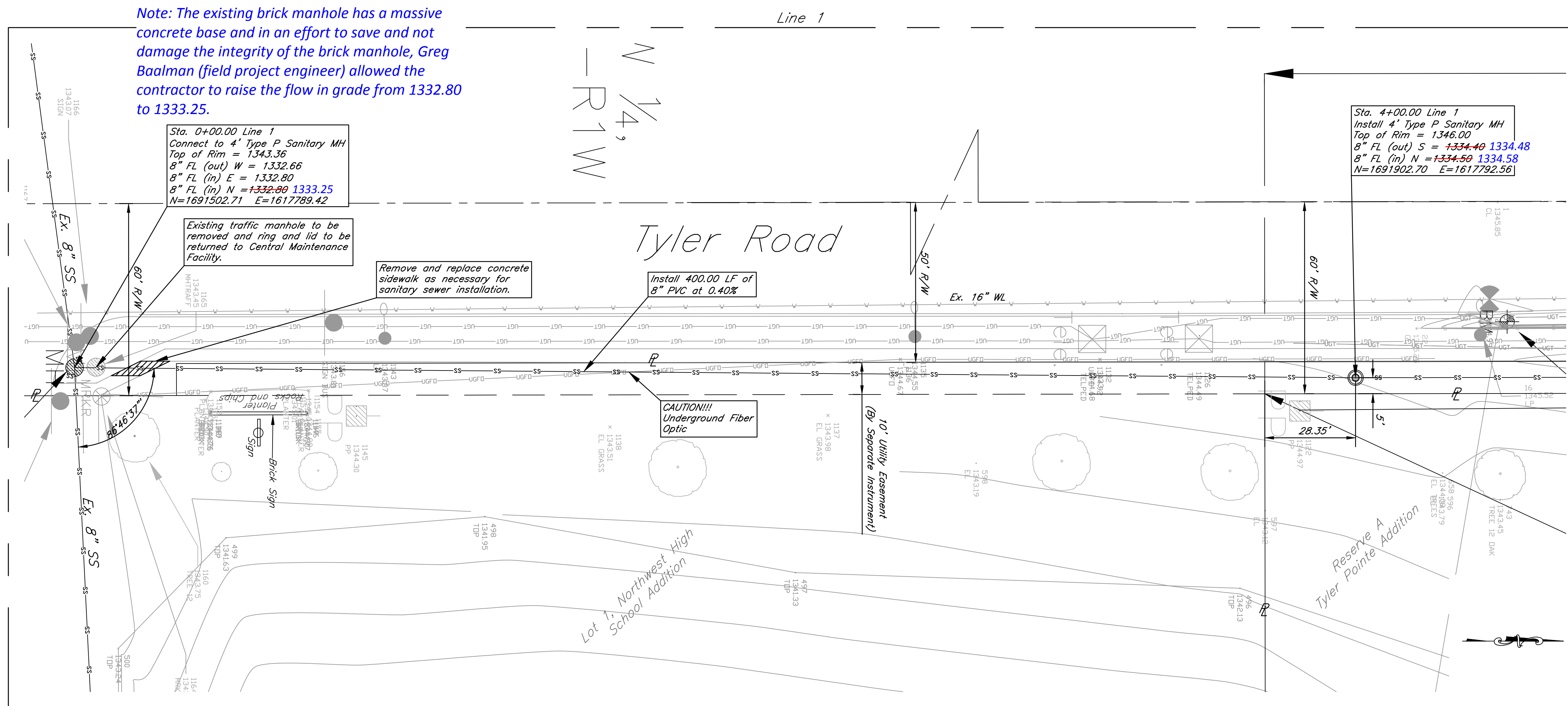


Tyler Point
Control Map/Plan Sheet
Wichita, Kansas

 <small>516 S. Market, Wichita, KS 67202 (316)284-0242</small>	PROJECT NUMBER 468-84861			SHEET 2
	KEM NO. 15212	FILE	DATE 02/2016	
DESIGN KM	DRAWN MP	REVISED		

March 15, 2016

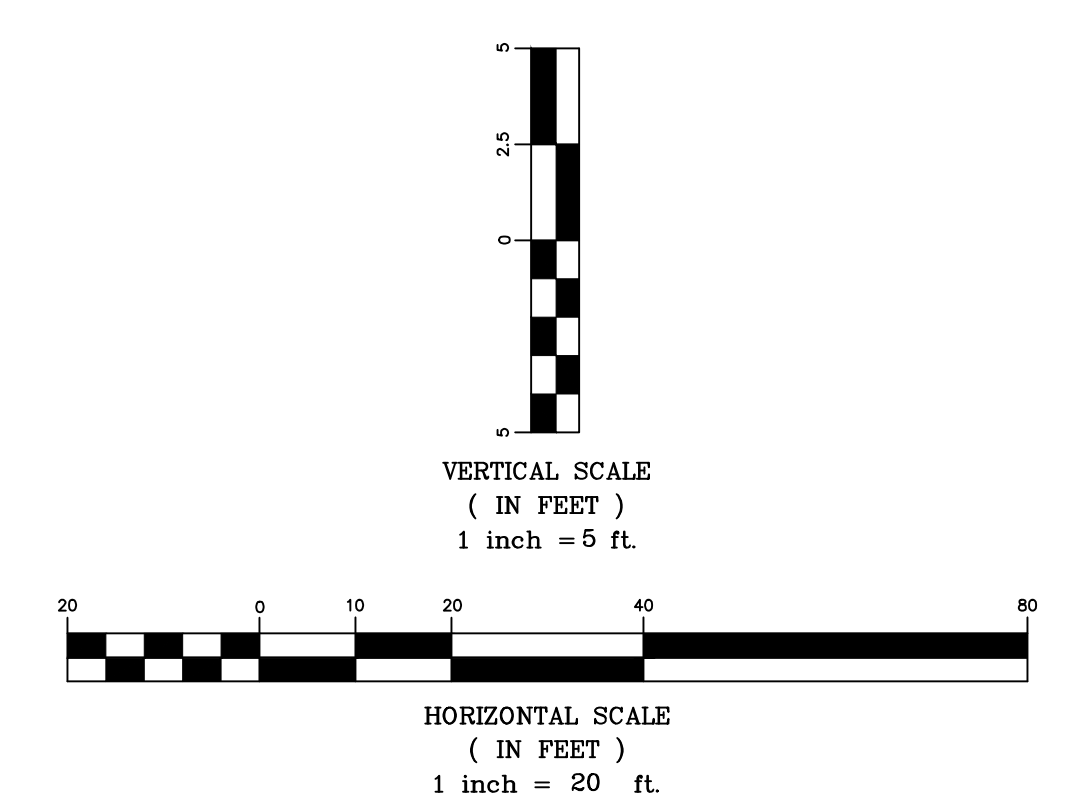
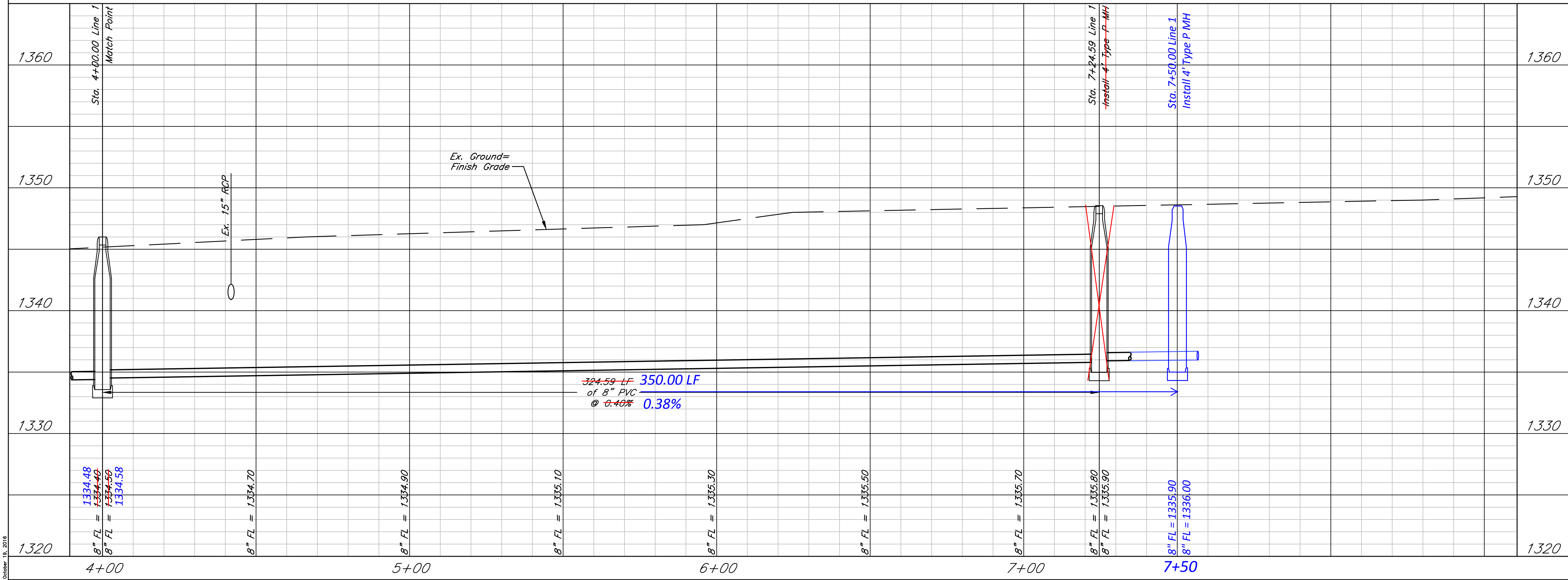
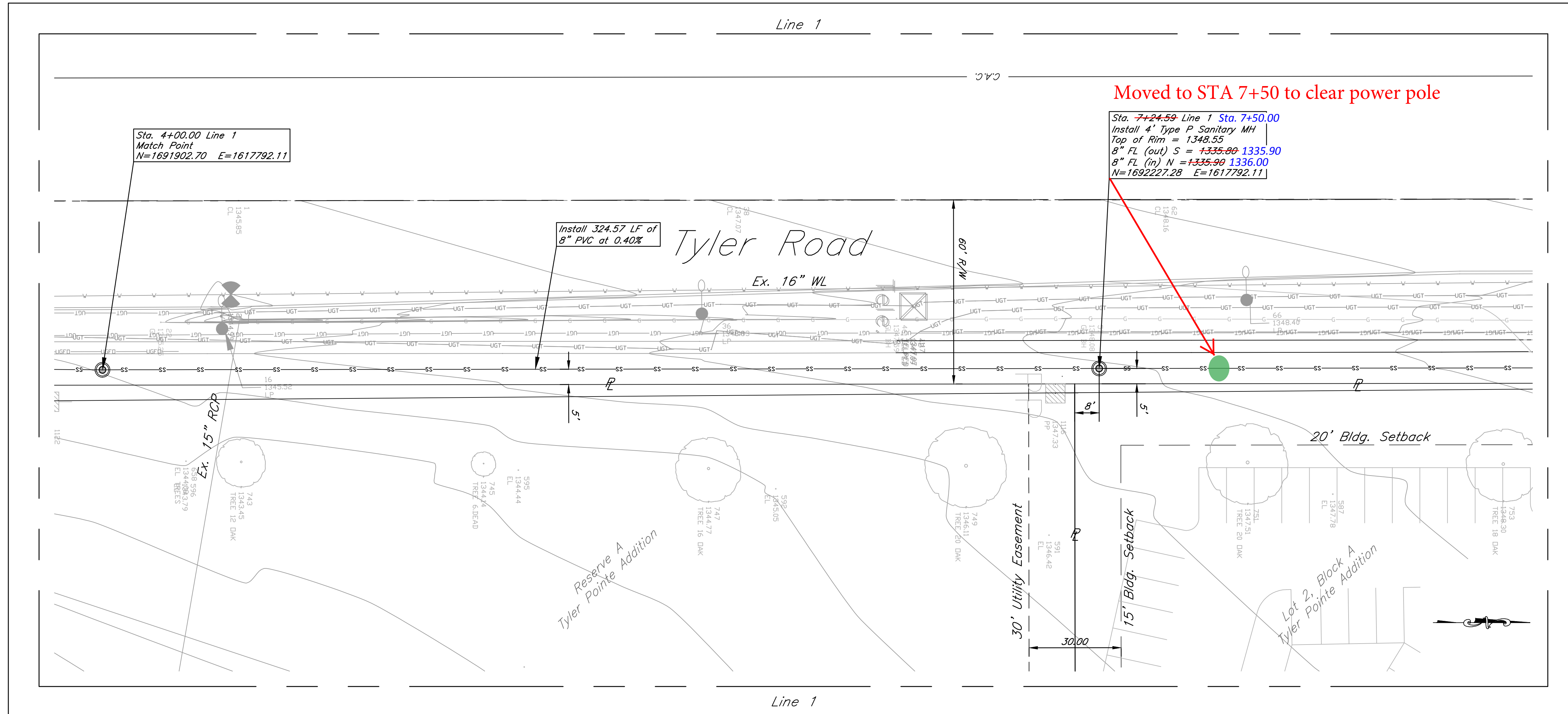
Note: The existing brick manhole has a massive concrete base and in an effort to save and not damage the integrity of the brick manhole, Greg Baalman (field project engineer) allowed the contractor to raise the flow in grade from 1332.80 to 1333.25.



Tyler Pointe
Line 1
Wichita, Kansas

	PROJECT NUMBER 468-84861			SHEET 3
	KEM NO. 15212	FILE	DATE 02/2016	
DESIGN KM	DRAWN MP	REVISED		

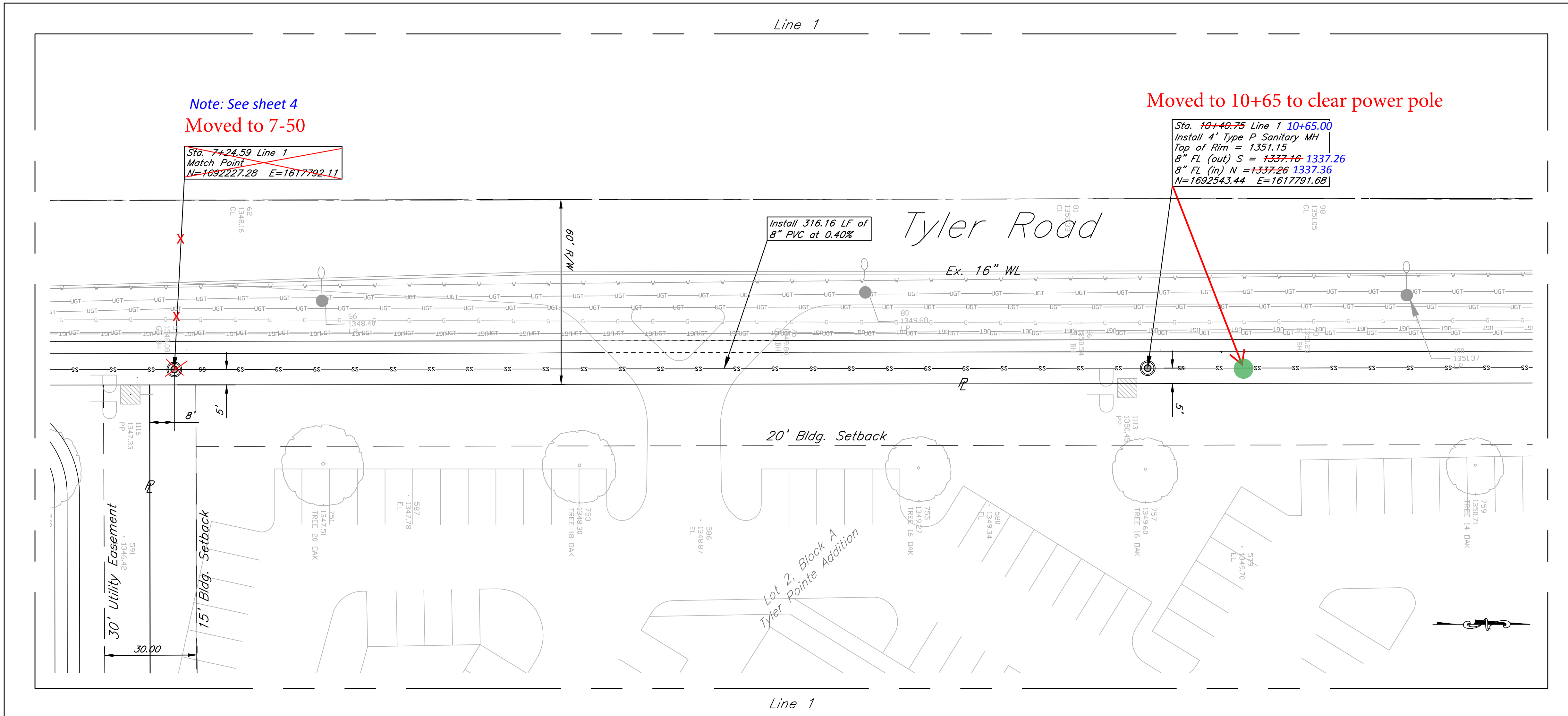
April 23, 2016



Tyler Pointe
Line 1
Wichita, Kansas

	PROJECT NUMBER 468-84861			SHEET 4
	KEM NO. 15212	FILE	DATE 02/2016	
DESIGN KM	DRAWN MP	REVISED		

October 18, 2016



Note: See sheet 4
Moved to 7-50

Sta. 7+24.59 Line 1
Match Point
N=1692227.28 E=1617792.11

Moved to 10+65 to clear power pole

Sta. 10+40.75 Line 1 10+65.00
Install 4' Type P Sanitary MH
Top of Rim = 1351.15
8" FL (out) S = 1337.16 1337.26
8" FL (in) N = 1337.26 1337.36
N=1692543.44 E=1617791.68

Install 316.16 LF of
8" PVC at 0.40%

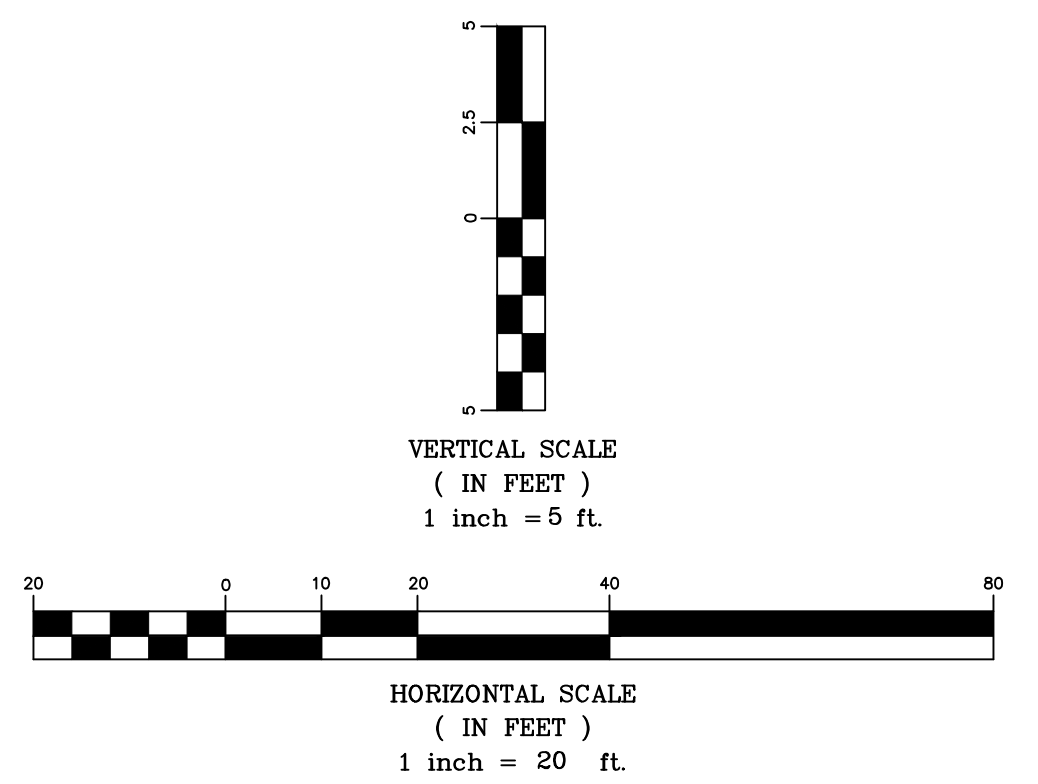
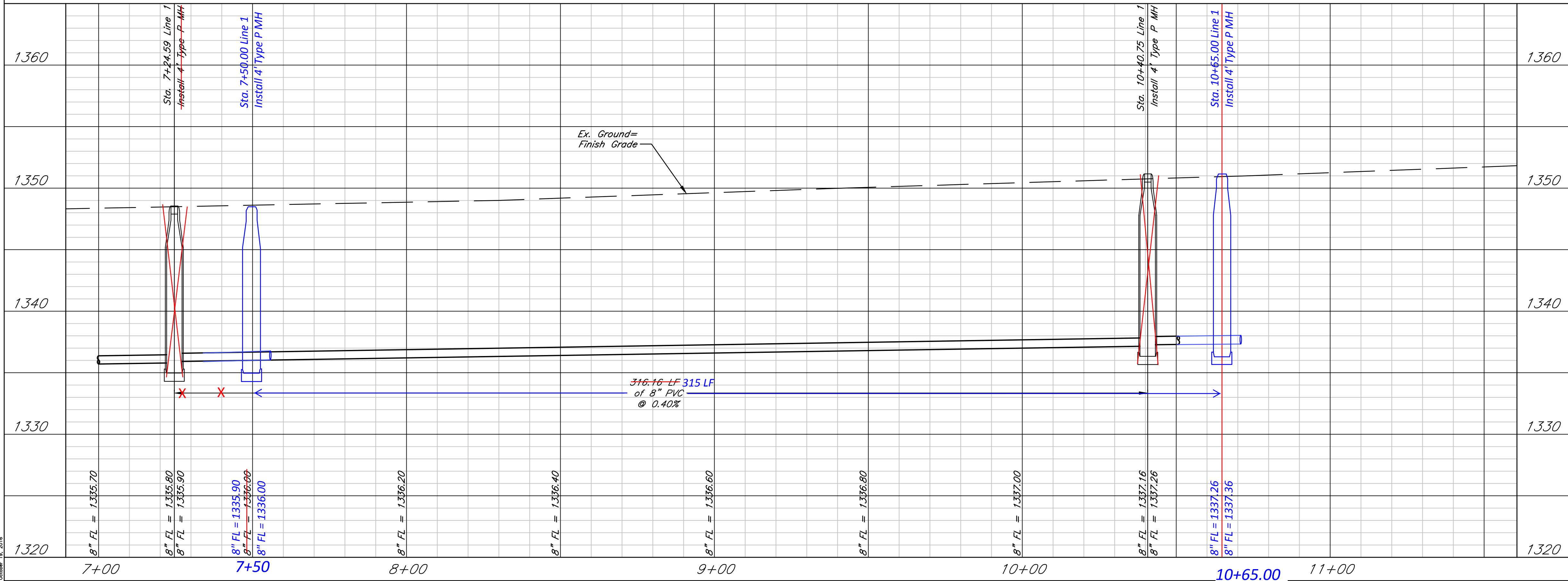
Tyler Road

Ex. 16" WL

20' Bldg. Setback

Lot 2, Block A
Tyler Pointe Addition

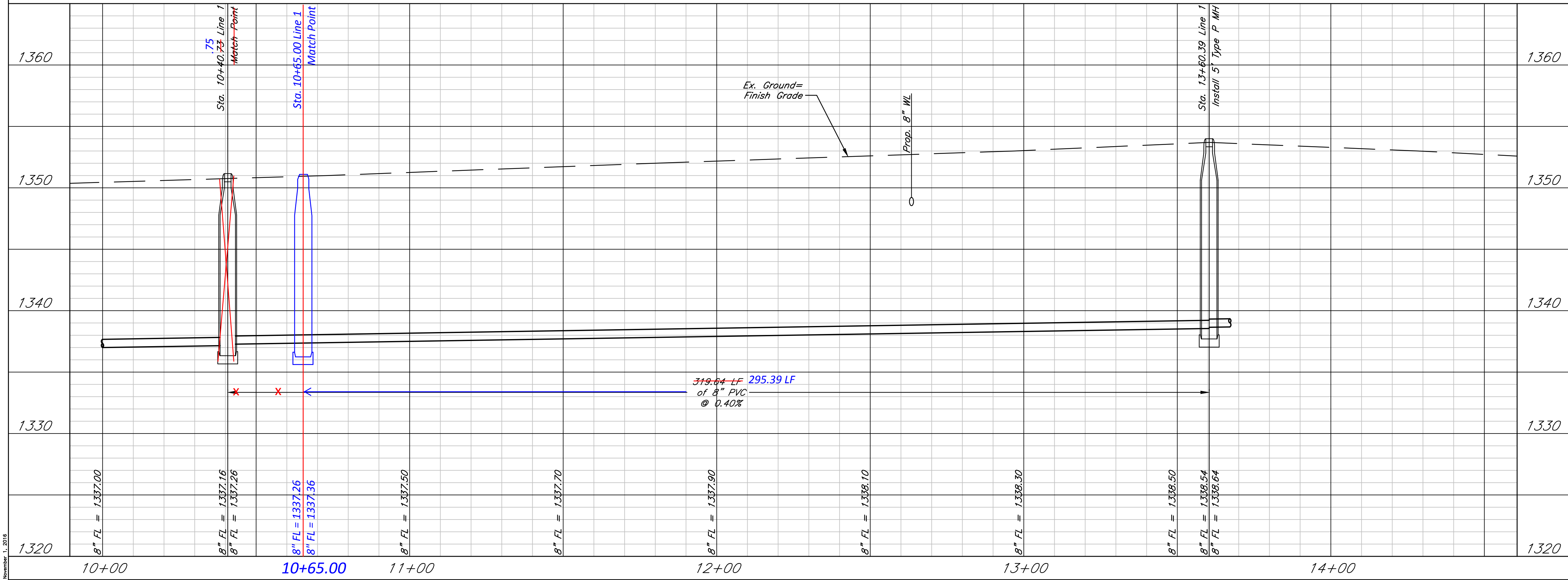
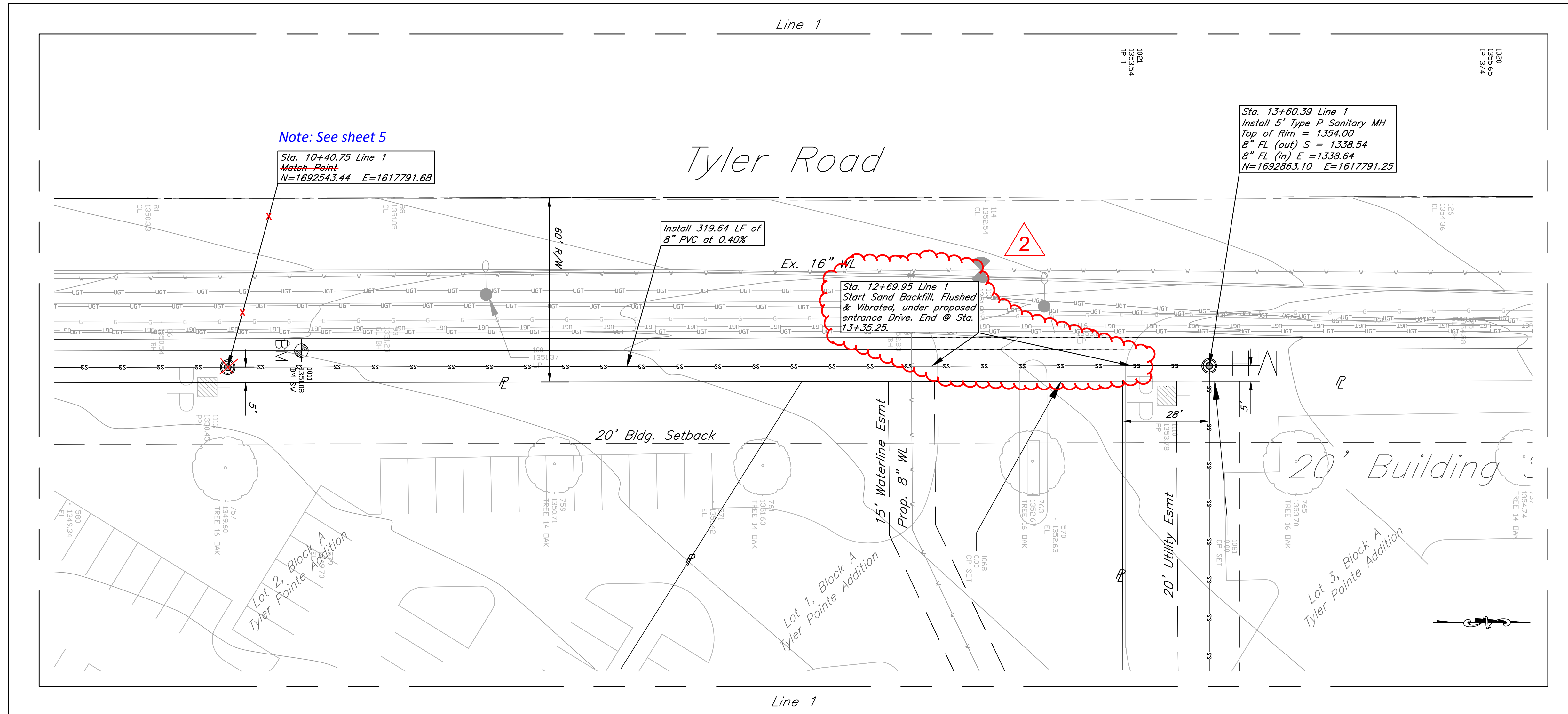
30' Utility Easement
15' Bldg. Setback



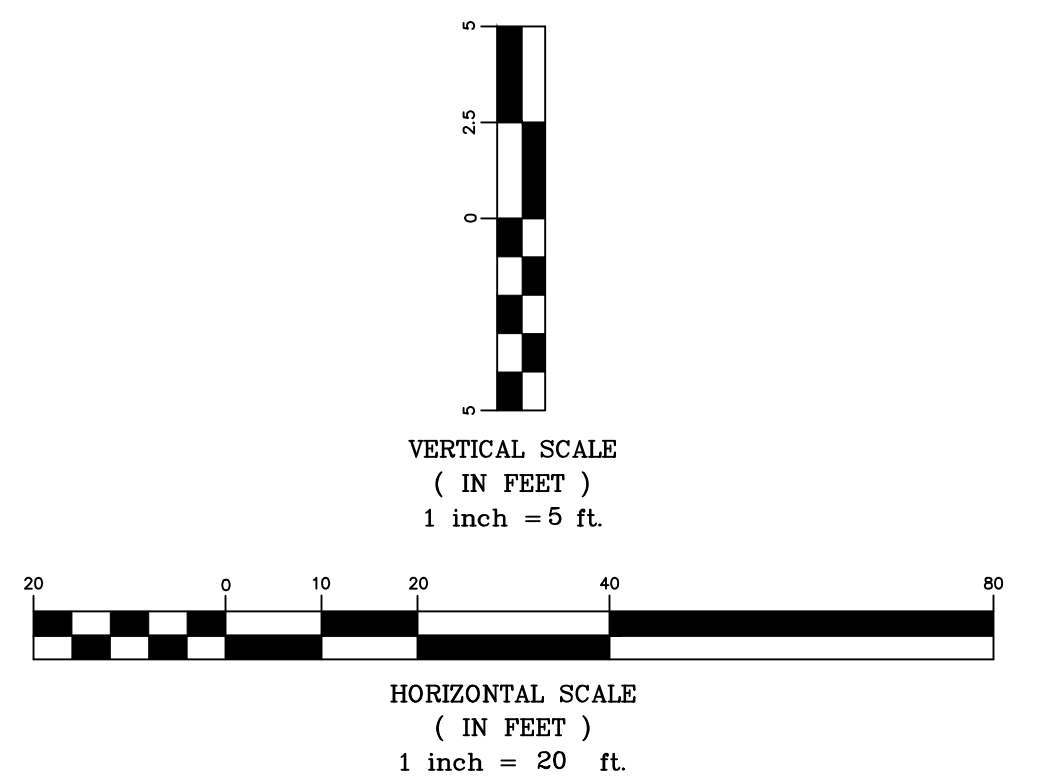
Tyler Pointe
Line 1
Wichita, Kansas

	PROJECT NUMBER 468-84861			SHEET 5
	KEM NO. 15212	FILE	DATE 02/2016	
DESIGN KM	DRAWN MP	REVISED		

October 18, 2016



2 Revisions: 11/01/2016

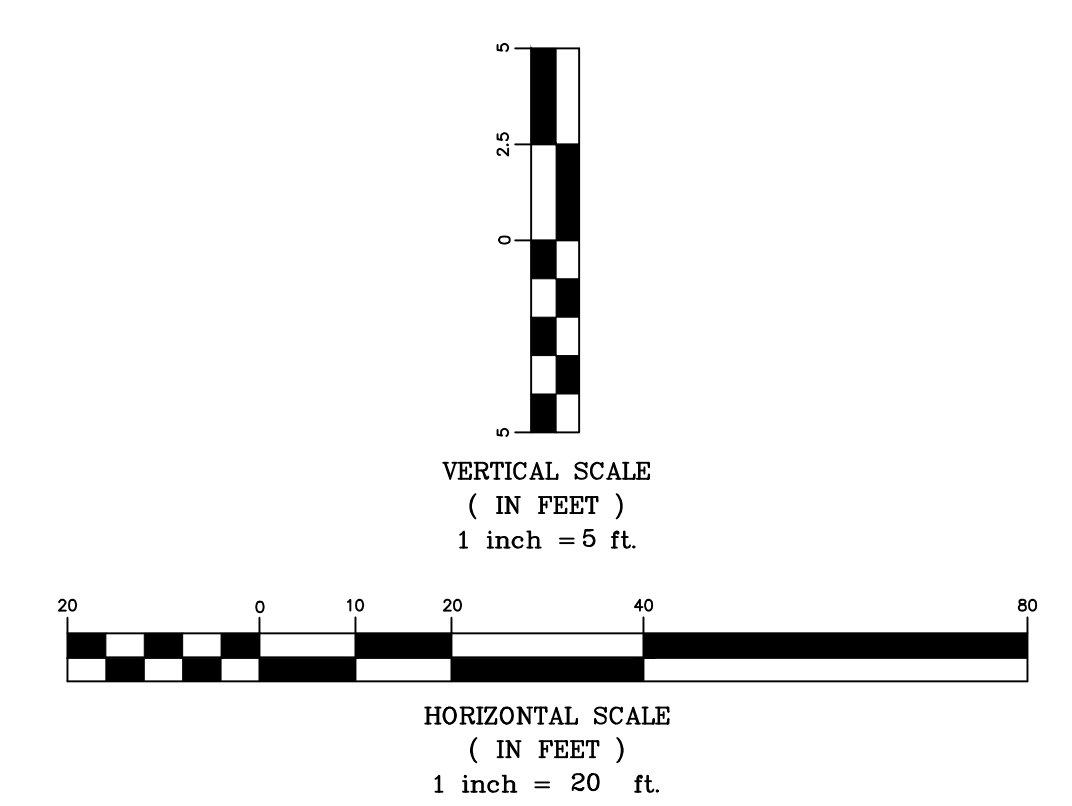
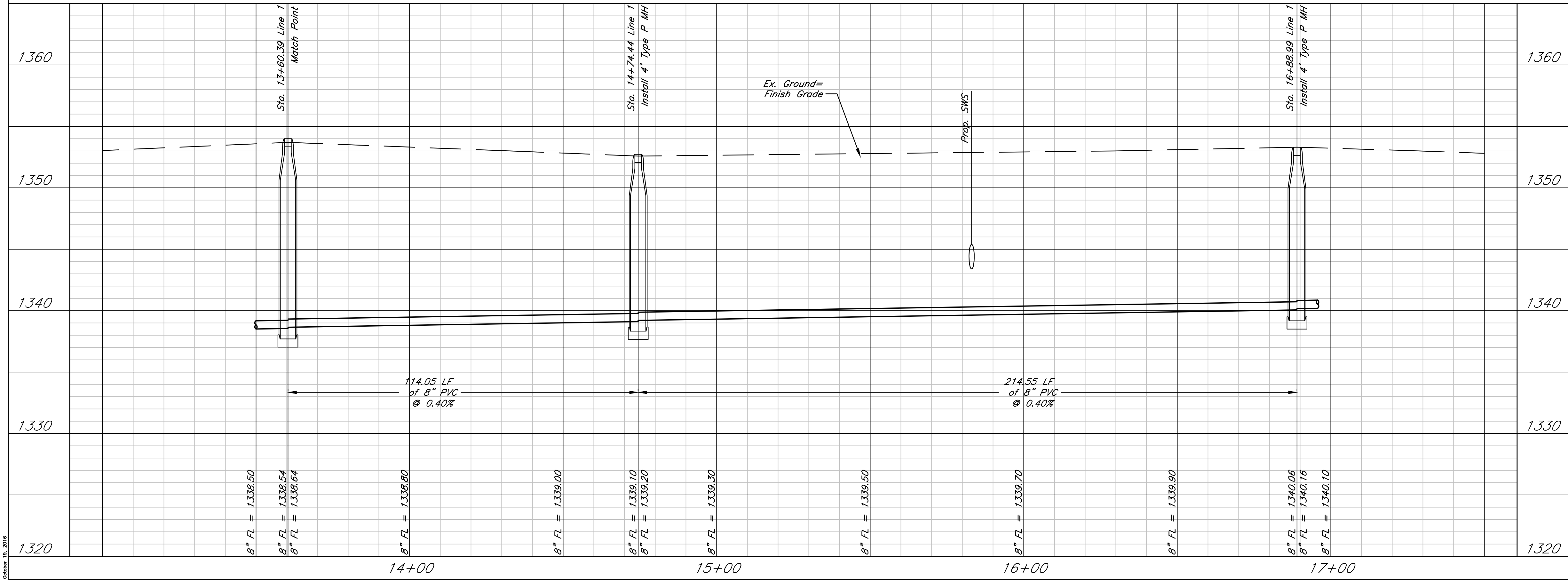
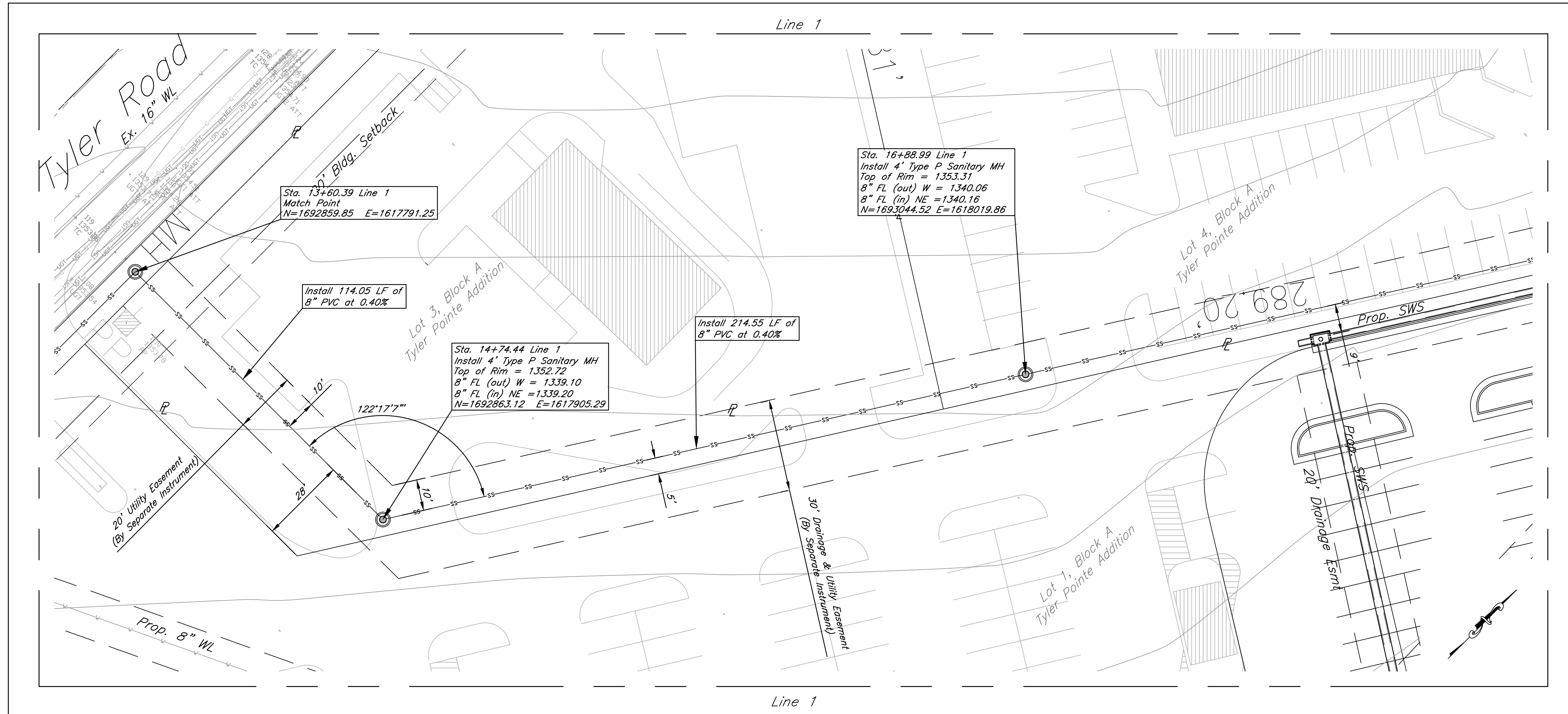


Tyler Pointe
Line 1
Wichita, Kansas

PROJECT NUMBER
468-84861



KEM NO.	FILE	DATE	SHEET
15212		02/2016	6
DESIGN	DRAWN	REVISED	
KM	MP		

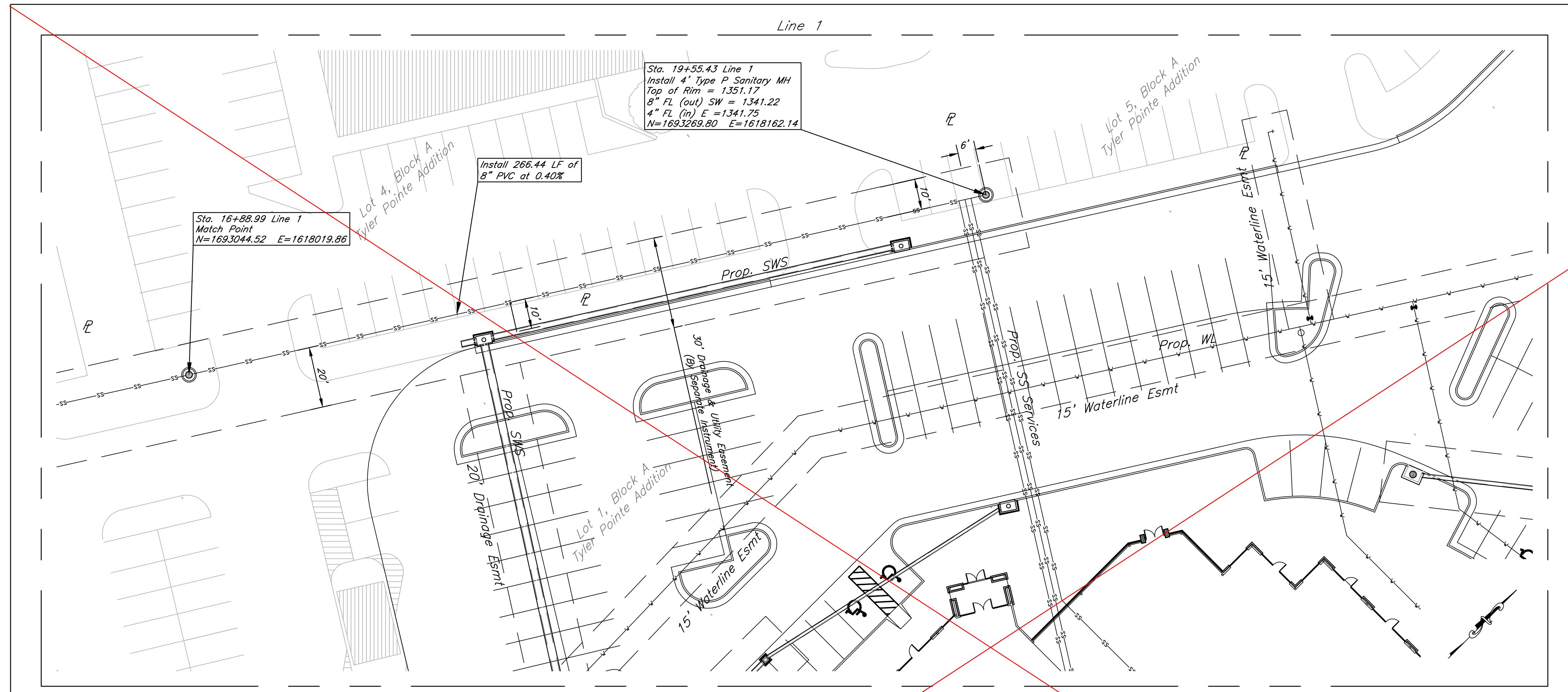


Tyler Pointe
Line 1
Wichita, Kansas

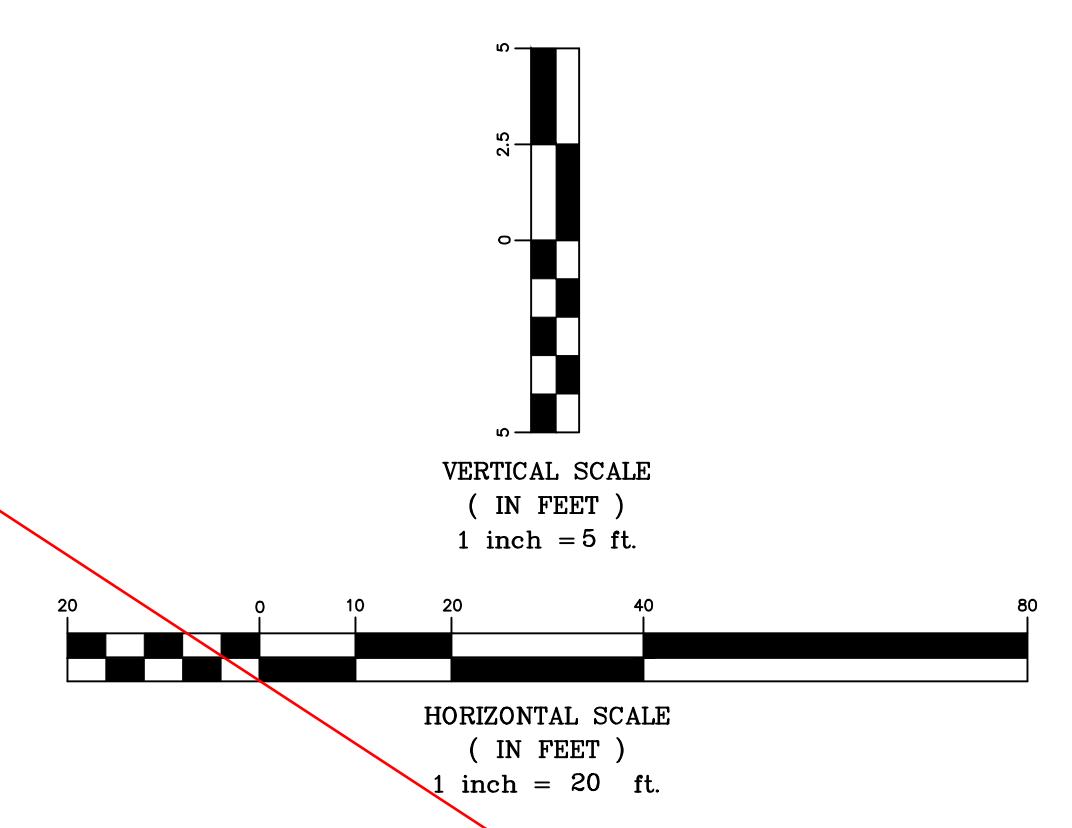
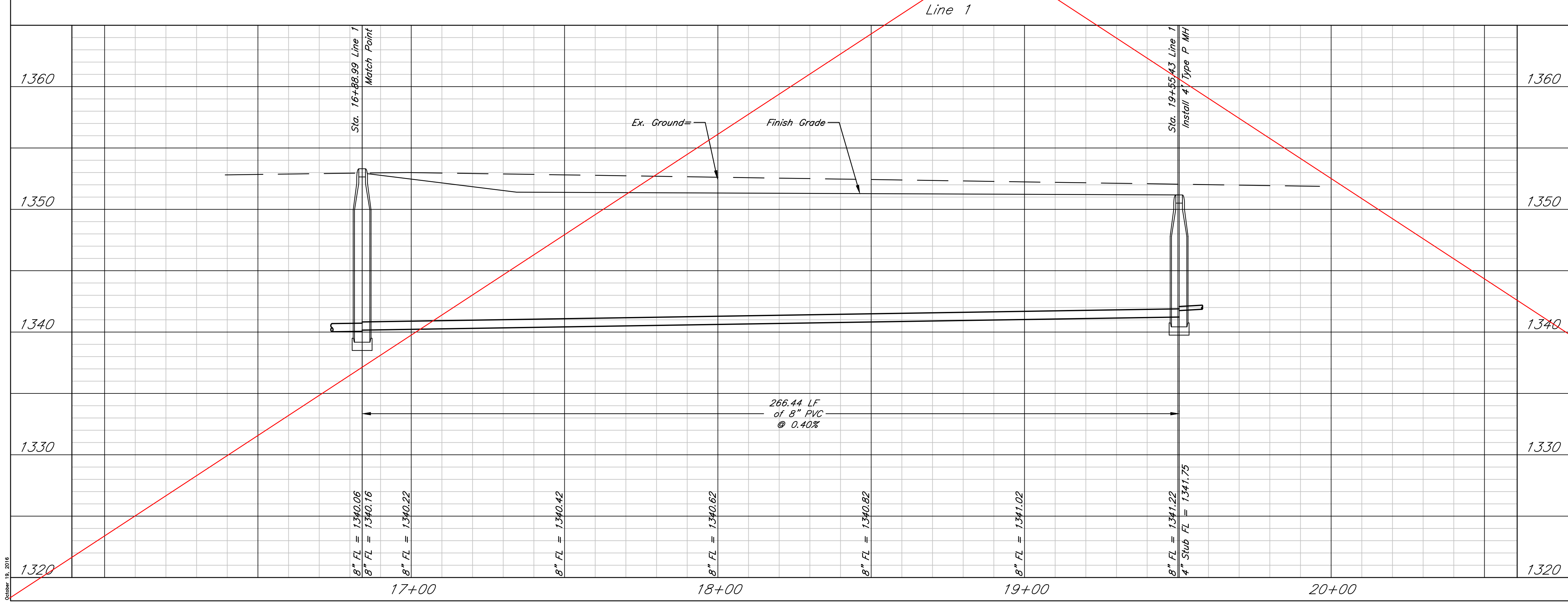
PROJECT NUMBER
468-84861

 117 E. Lewis, Wichita, KS 67202 (316)264-0242	KEM NO. 15212	FILE	DATE 02/2016	SHEET 7
	DESIGN KM	DRAWN MP	REVISED	

October 18, 2016



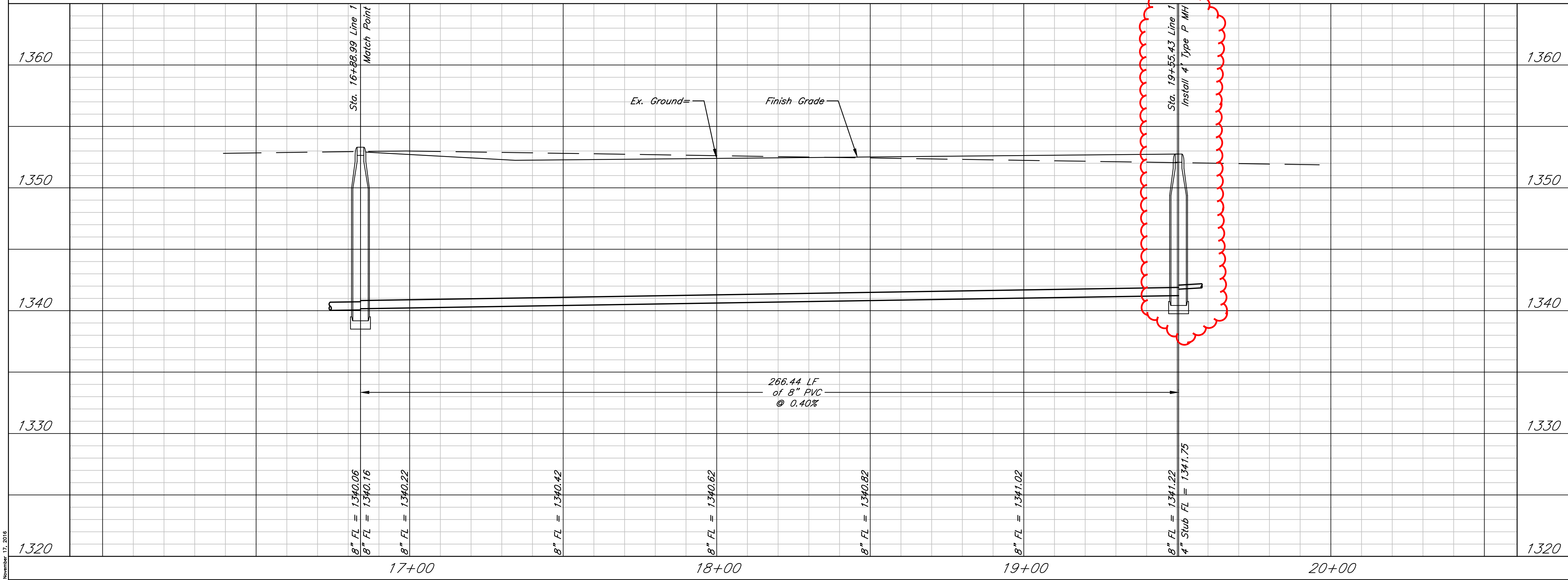
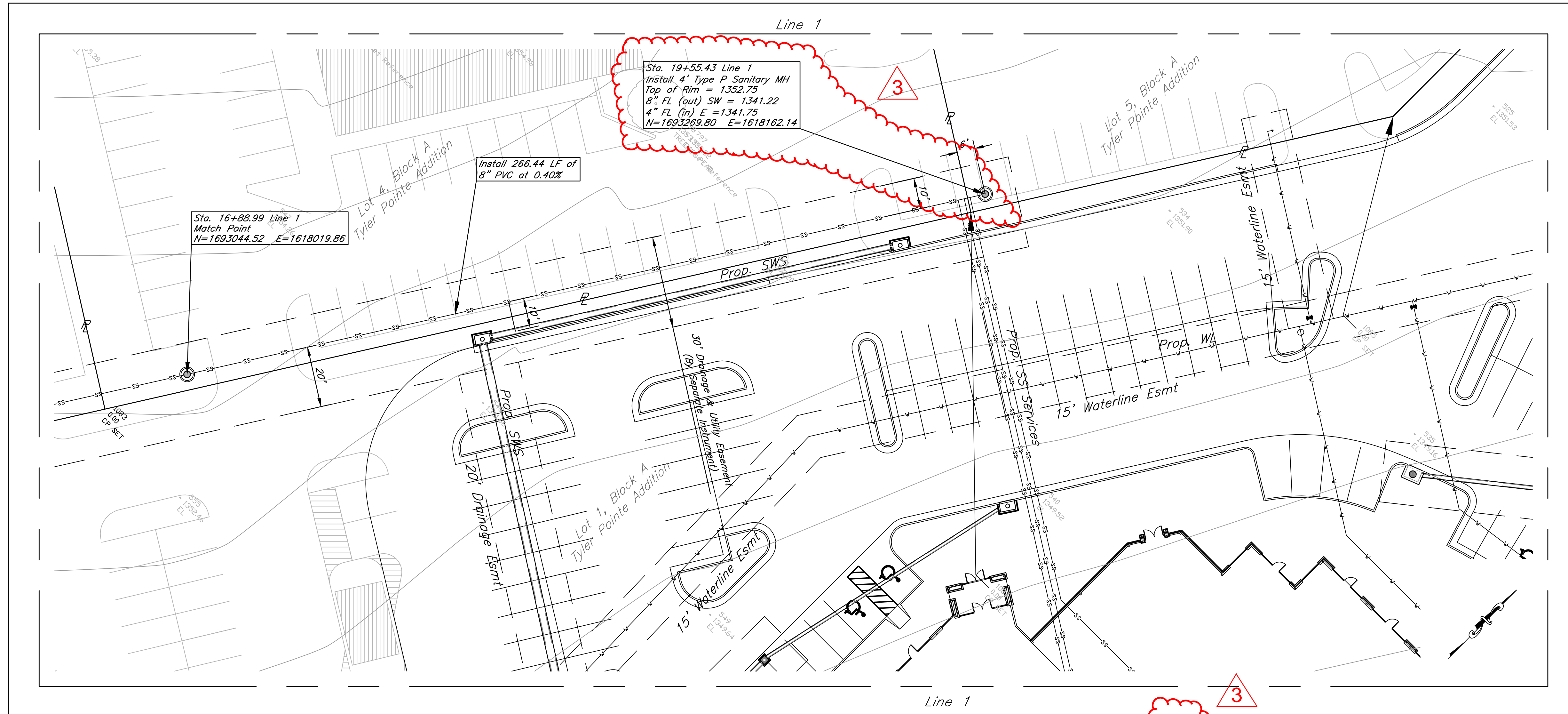
See revised sheet 8



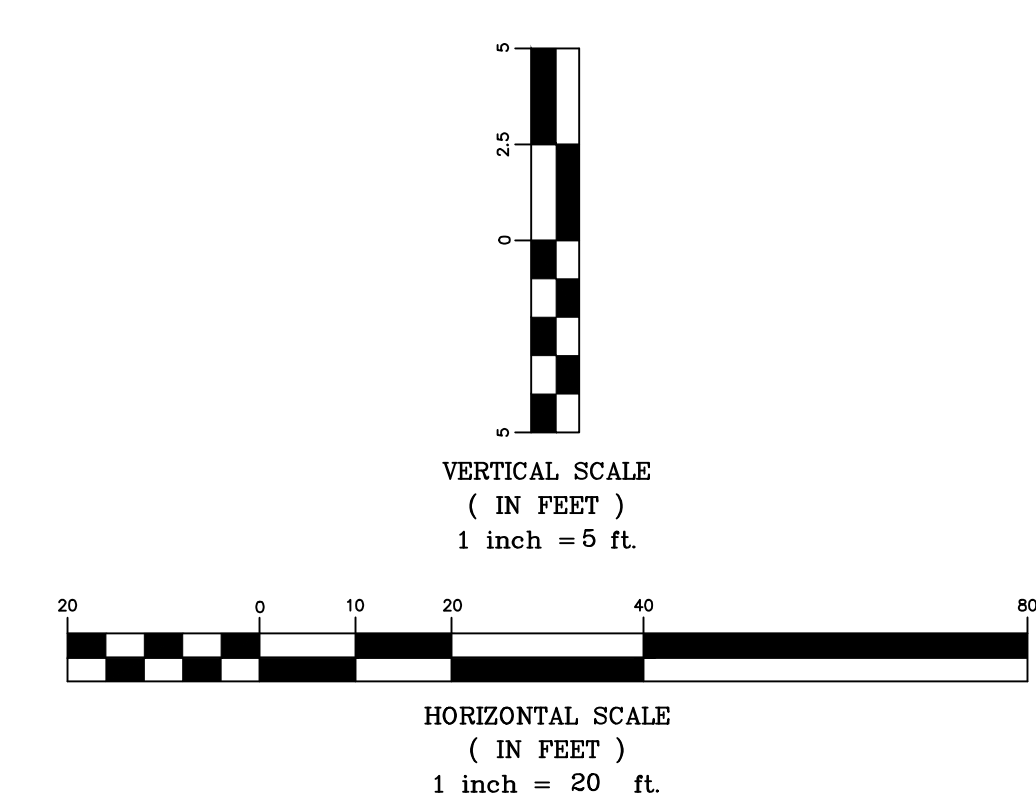
Tyler Pointe
Line 1
Wichita, Kansas

 117 E. Lewis, Wichita, KS 67202 (316)264-0242	PROJECT NUMBER 468-84861		SHEET 8
	KEM NO. 15212	FILE	
DESIGN KM	DRAWN MP	REVISED	

October 18, 2016



3 Revisions: 11/17/2016



Tyler Pointe
Line 1
Wichita, Kansas

	PROJECT NUMBER 468-84861			SHEET 8
	KEM NO. 15212	FILE	DATE 02/2016	
DESIGN KM	DRAWN MP	REVISED		

November 17, 2016

