

Lateral 5, Main 21, FMC
SANITARY SEWER EXTENSION
 to serve
Sierra Hills Golf Course SS
CITY OF WICHITA, KANSAS

Gary Janzen, P.E. City Engineer
 Project Number 468-85146
 O.C.A. NO. 744425

Dutton Construction - Contractor
 J. Wagner - City of Wichita, Field Project Engineer
 M. Thom - City of Wichita, Inspector
 AS-built
 MH stub with riser
 Release Date: 02/24/2017
 Completion Date: 2/21/2018
 pdf: apr 03/06/2017

GENERAL NOTES:

- The Contractor shall comply with all applicable safety regulations. All construction shall be completed following current City Standard Specifications and Special Provisions.
- Contractor will be required to provide notice to utility companies a minimum of seventy-two (72) hours prior to any excavation, as follows:

Kansas One-Call	687-2470
-----------------	----------

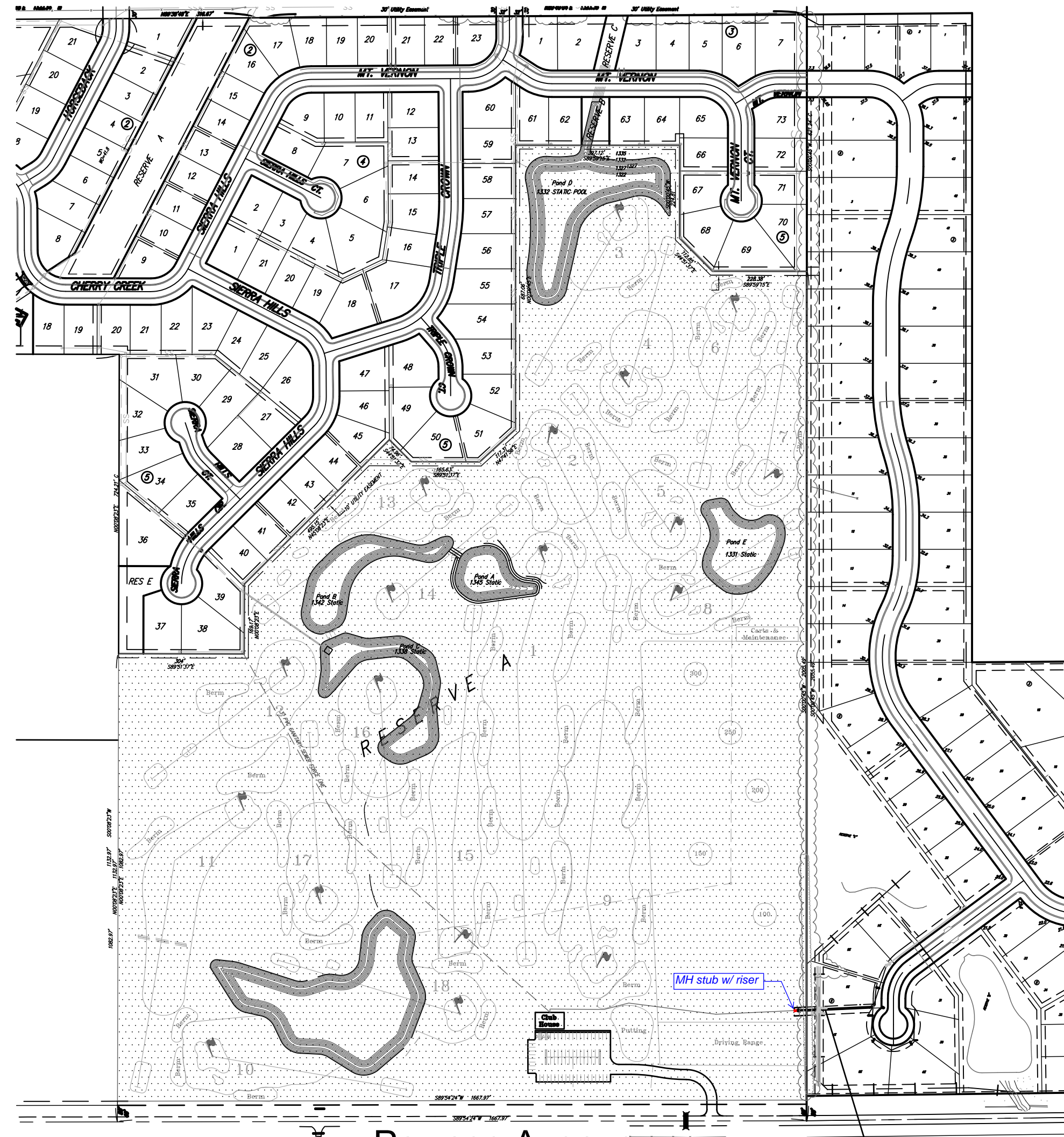
The Contractor must notify the following in case of an emergency:

Cox Communications	316-260-7195
Kansas Gas Service	1-888-482-4950
Black Hills Energy	316-941-1628
Westar	316-216-6554
AT&T	316-268-2102
City of Wichita Water	316-268-4555
City of Wichita Sewer	316-268-4073
City of Wichita Stormwater	316-268-4090
City of Wichita Traffic	316-268-4034
- Utility service lines, poles, etc. are to be adjusted as necessary by others prior to construction unless the plans specifically call for their adjustment by the Contractor or unless the plans specifically identify a utility to be adjusted by its owner during construction. Existing utilities and their location, as shown on the plans, represent the best information obtainable for design. The Contractor will be required to work around existing utilities within the right-of-way which do not conflict with proposed construction.
- Rubble from the removal of miscellaneous structures and excess excavation which is to be wasted shall be disposed of on sites to be provided by the Contractor. These sites shall be approved by the Engineer as to suitability, appearance and site location. Locations, in the opinion of the Engineer, that will leave an unsightly appearance will not be approved. All disposal sites must be approved by the Kansas Department of Health and Environment. Material either stockpiled or disposed of in a flood plain will require a Kansas State Board of Agriculture permit. Any material dumped in waters of the United States or wetlands is subject to U.S. Corps. of Engineers permitting regulations. Any material buried or stockpiled beyond approved construction limits will require additional archaeological investigations unless buried in a previously approved borrow location.
- Trees and shrubs in public right-of-way which are in direct conflict with proposed new construction shall be removed by the Contractor with the Engineer's approval. Trees and shrubs which are not in direct conflict with proposed new construction shall be saved and protected from damage.
- The Contractor shall give all property owners and/or tenants of developed property abutting the construction of this project a minimum of ten (10) days notice prior to start of construction.
- The Contractor shall be responsible for preserving property irons. The Contractor will be required to re-establish any property irons which are damaged or destroyed by his construction operations. Such irons shall be re-established by a licensed land surveyor in accordance with state laws.
- If traffic will be impacted by construction, a traffic control plan must be submitted and approved by the City Traffic Engineer, Brian Coon at traffic@wichita.gov before construction can begin. The Contractor shall be responsible for all traffic control measures to facilitate construction. All construction zone markings and signage shall conform to the latest version of the Manual on Uniform Traffic Control Devices (MUTCD) as published by the US Dept. of Transportation, Federal Highway Administration. All costs associated with construction markings and signage shall be the Contractors responsibly.
- All elevations shown are NAVD 88.
- All areas disturbed during construction that will not be under proposed pavement shall be restored to match existing conditions.
- The Contractor shall protect from damage and support existing utilities through constructions as approved by the utility owner and the Engineer at the contractors expense.
- Contractor shall limit the extent of trench openings overnight and weekends to less than 50 feet.
- Any sidewalk, drive approach, curb, or street pavement removed to construct project must have a pavement cut permit and be replaced by the City contractor. Permits can be obtained by calling 316-268-4501 or 316-268-4480.
- All stubs and plugged pipes shall be located with

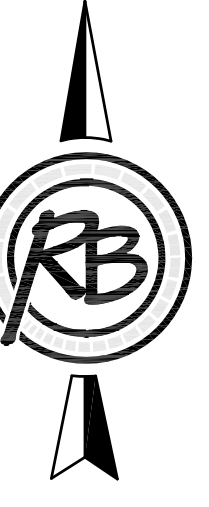
- green plastic tape in the same manner as risers.
- Connecting to Existing Manholes:
 Prior to laying sewer lines using existing stubs in existing manholes, the Contractor shall expose and verify the elevation, grade and alignment of existing stubs and notify the Engineer of any deviation from the plans. Where connection to an existing manhole that does not have an existing stub or the stub is unusable due to elevation grade or alignment, the Contractor shall bore cut into existing manhole wall to make connection using approved water stop gasket, and reshape the existing manhole invert to provide smooth flow. The cost to connecting to existing manholes is incidental to the project.
 - Contractor shall provide positive drainage away from all manhole covers.
 - The Contractor shall prevent any construction debris from entering the existing sanitary sewer during construction.
 - The Contractor shall be responsible for maintaining continuous flow of sewage through construction. Contractors proposed method for maintaining sewage flow shall be submitted and approved by the Sewer Maintenance Division (316-268-4073) prior to starting and by-passing of sewage flows.
 - Any over excavation from manhole and pipe removal shall be backfilled with AB-3 compacted to 90-95% ASTM D698.

Benchmarks

- BM #1 - CHISELED SQUARE ON THE TOP OF CURB OF IRONSTONE COURT AT NORTH PROPERTY LINE LOT 31, BLOCK 5 SIERRA HILLS 2ND ADDITION.**
 ELEVATION = 1308.29 (NAVD88)
- BM #2 - R.R. SPIKE 32.39' E. & 40.87' N. OF THE CENTERLINE INTERSECTION PAWNEE AVENUE & 127TH STREET EAST**
 ELEV.=1349.09 (NAVD88)



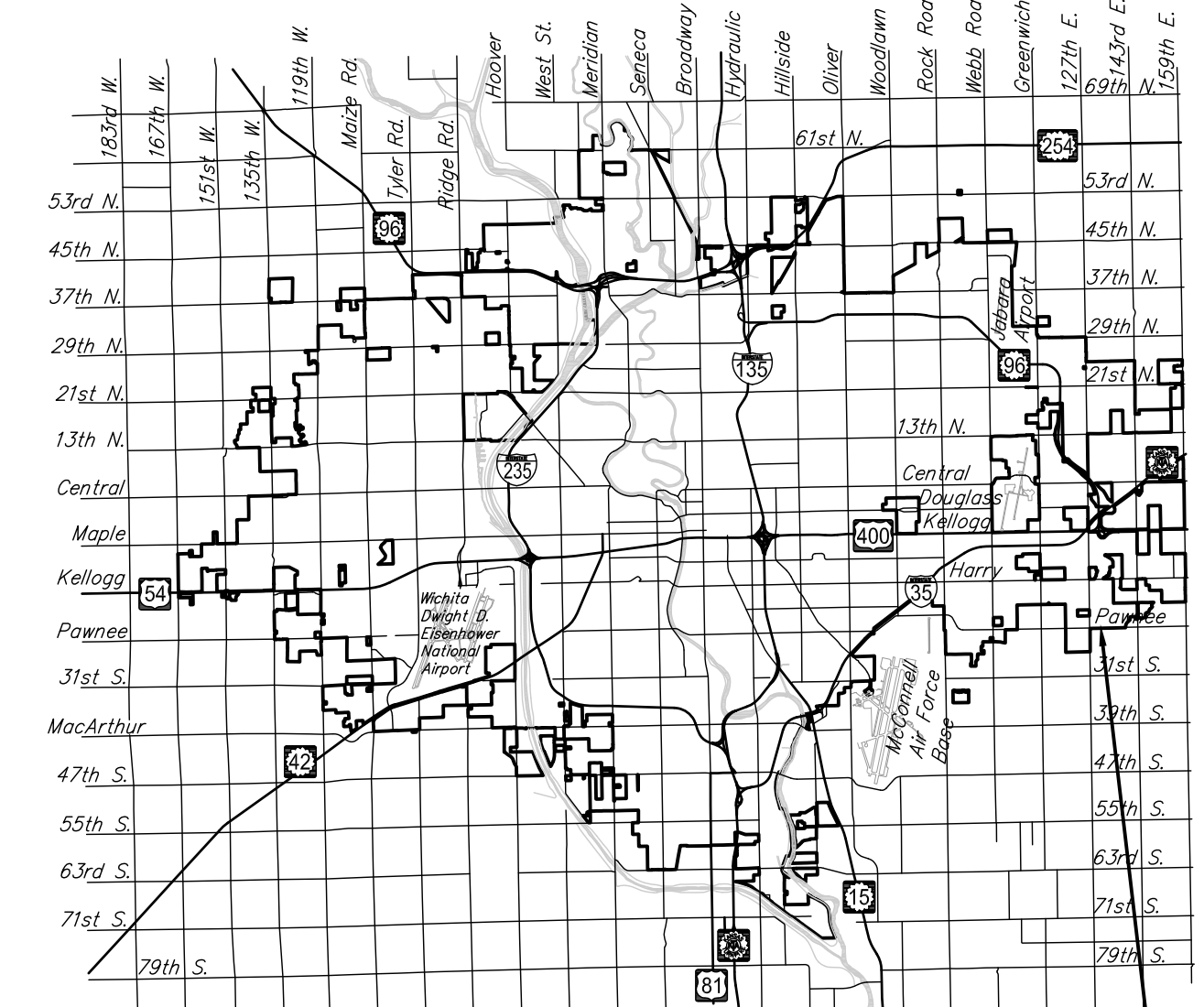
IMPROVEMENT DISTRICT



Not to Scale

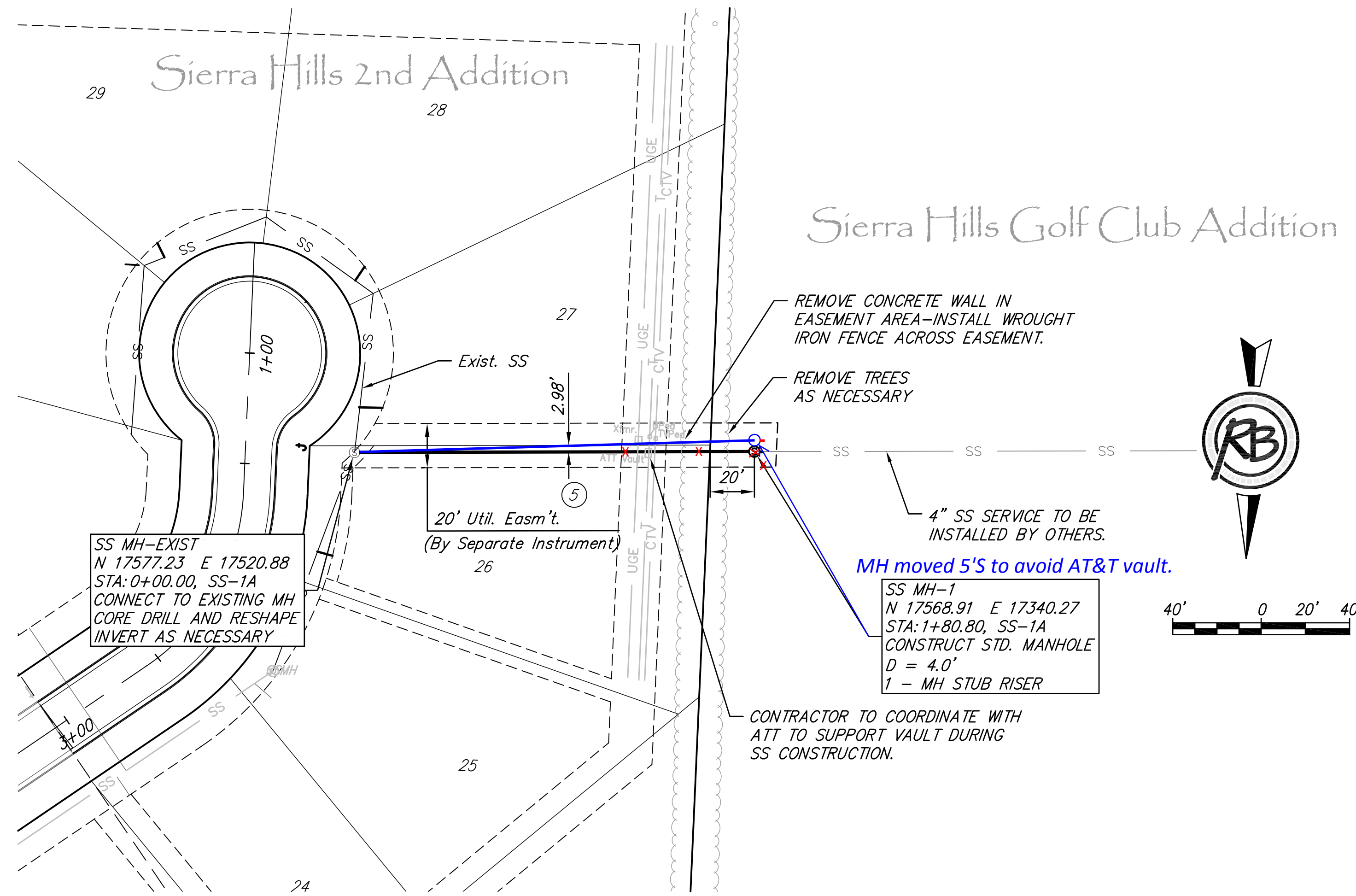
Sheet Index

- TITLE SHEET
- PLAN & PROFILE
- PROJECT BUBBLE MAP
- PRECAST SS MH DETAILS
- MH FRAME & COVER DETAILS
- RISER DETAILS
- 7-11. EROSION CONTROL DETAILS
- PLAT



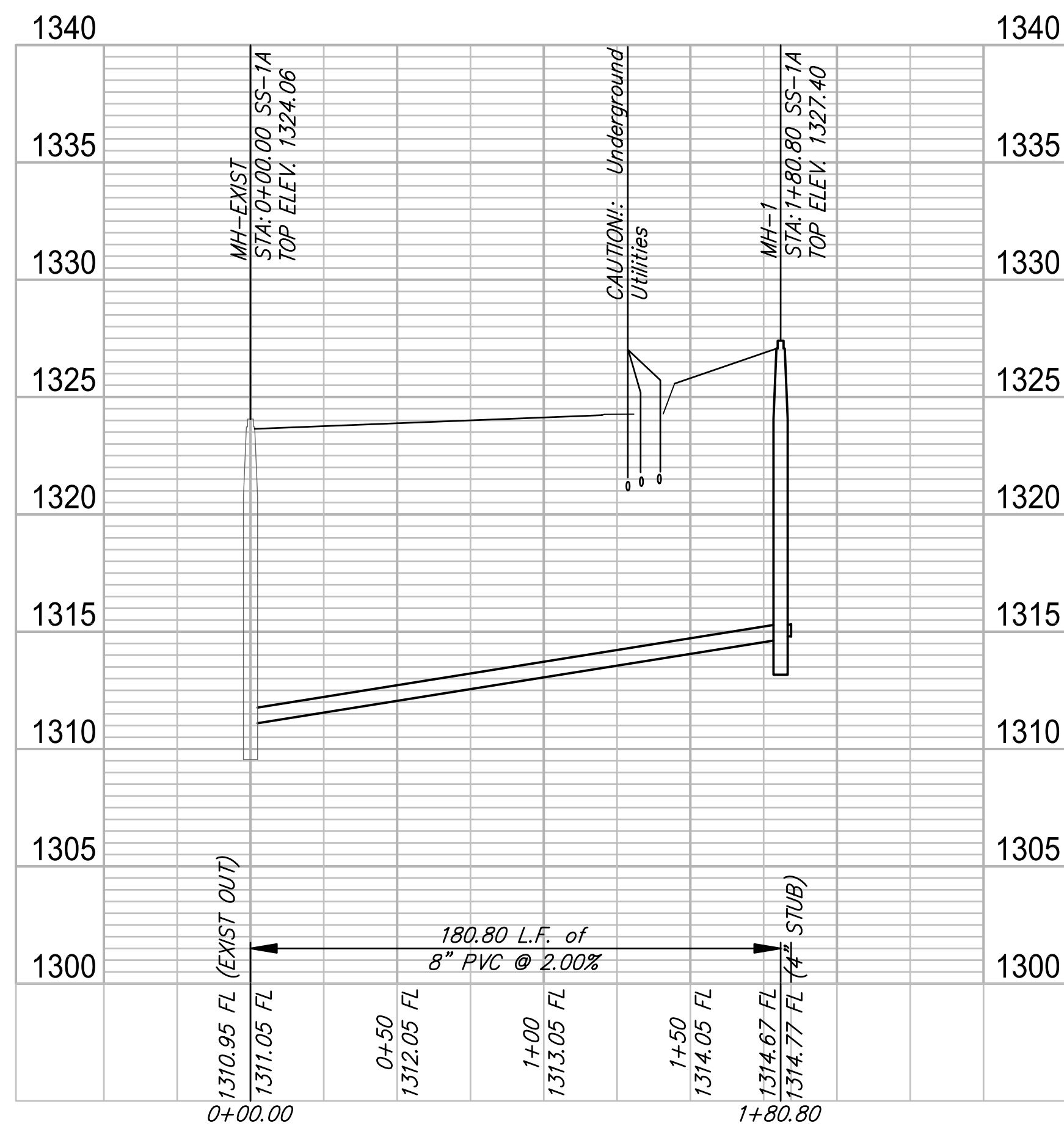
Vicinity Map PROJECT LOCATION

SEWER SERVICE TABLE							
NUMBER	TYPE	SERVING			STATION/DIRECTION	FOR INFORMATION ONLY	
		LOT NO.	BLOCK NO.	LINE NO.		APPROX. LENGTH 4" PIPE	VERTICAL
1	4" MH Riser	A	-	1	1+80.8	8.4	5.0



NOTES:

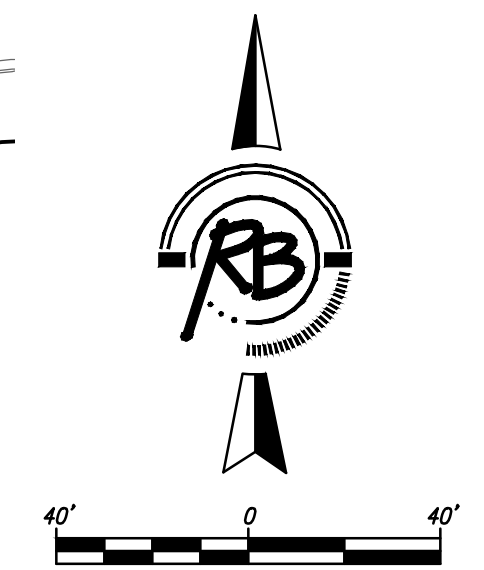
1. CONCRETE WALL REMOVAL AND WROUGHT IRON FENCE INSTALLATION SHALL BE INCIDENTAL TO THE BID ITEM FOR SITE CLEARING AND RESTORATION.
2. TREE REMOVAL WILL BE INCIDENTAL TO THE BID ITEM FOR SITE CLEARING AND RESTORATION.
3. CONTRACTOR SHALL CONTACT JASON EDWARDS AT ATT (316-268-2008) TO COORDINATE WORK AROUND ATT VAULT.



REVIEW	SEPT 2016
DATE	Nov 28, 2016
DESIGN	KWL
DRAWN	DRS
PROJECT NUMBER	468-85131
DRAWING FILE	4768E Engineering Base (SS Line 1) DRS

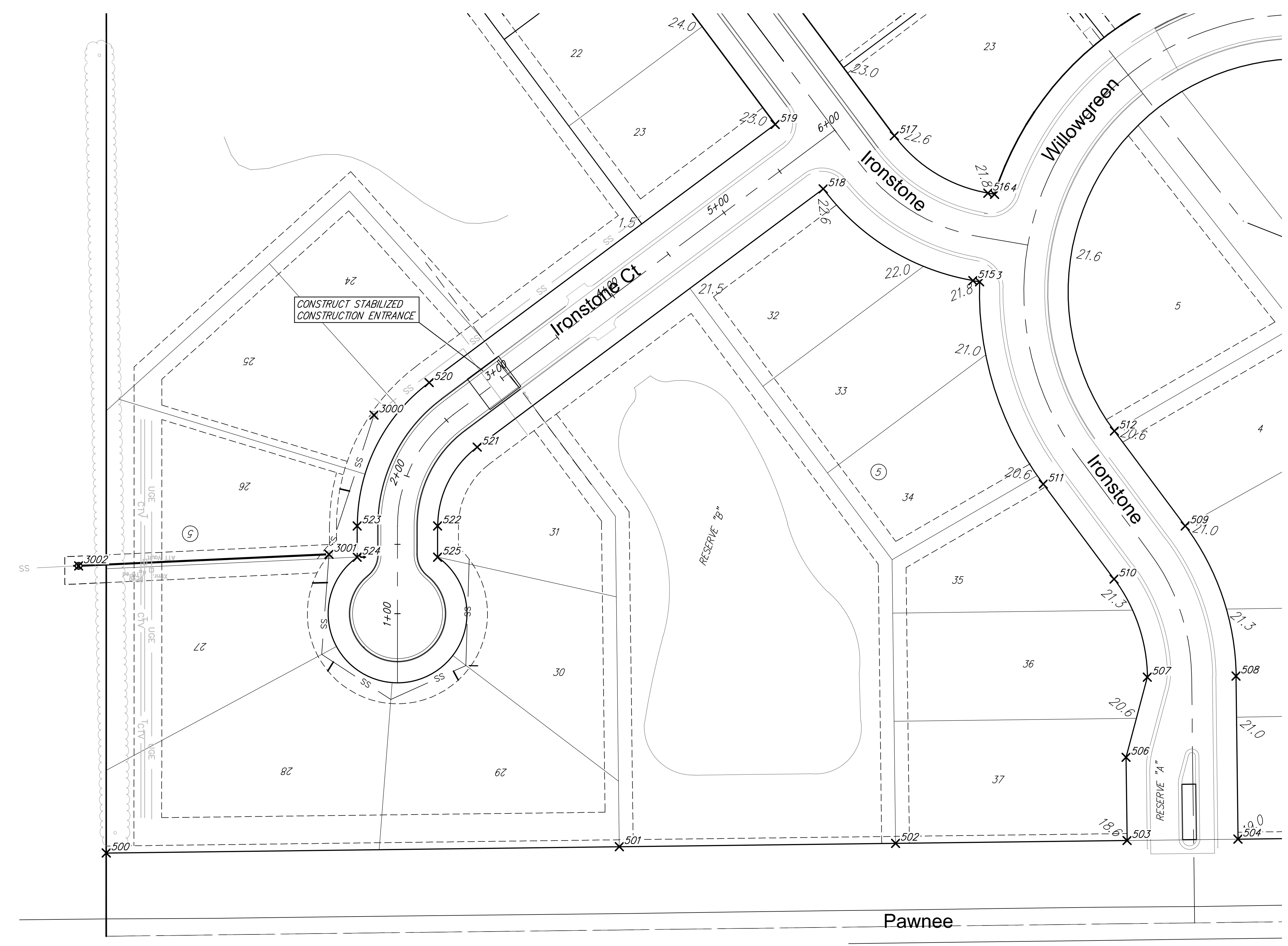
Sierra Hills Golf Course SS
SS Line 1
 Wichita, Kansas

RB JOB	4768E
SHEET	2
OF	12



Point Table			
Point #	Northing	Easting	Description
500	17361.86	17360.23	Addition Corner
501	17366.40	17730.36	Block Corner
502	17368.84	17929.63	Block Corner
503	17370.88	18096.65	Block Corner
504	17371.86	18176.65	Block Corner
506	17430.88	18095.92	PI
507	17488.64	18111.21	PI
508	17489.42	18175.21	PC
509	17597.66	18138.56	PT
510	17559.40	18087.25	PT
511	17627.89	18036.17	PC
512	17666.15	18087.48	PC
513	17773.74	17990.26	Block Corner
514	17836.83	18001.04	Block Corner
515	17774.57	17985.45	PC
516	17837.65	17996.23	PC
517	17878.98	17928.76	PT
518	17840.72	17877.45	Block Corner
519	17887.21	17842.78	Block Corner
520	17701.06	17593.16	PC

Point Table			
Point #	Northing	Easting	Description
521	17654.56	17627.83	PC
522	17597.66	17599.28	PT
523	17597.67	17541.28	PT
524	17575.19	17541.27	PI
525	17575.17	17599.27	PI
3000	17677.63	17553.40	0+00 Existing MH
3001	17577.23	17520.88	1+05.54 MH-1
3002	17568.91	17340.27	1+77.87 MH-2



(c) Copyright 2015, Ruggles & Bohm, P.A.

Sierra Hills Golf Course SS
Bubble Map

	<p>RUGGLES & BOHM</p> <p>ENGINEERING SURVEYING LANDSCAPE ARCHITECTURE GOVERNMENT</p> <p>924 NORTH MAIN WICHITA, KANSAS 67203 P (316) 264-8008 F (316) 264-4621 WWW.RUGGLESANDBOHM.COM</p>	<p>DATE Nov 28, 2016</p> <p>DESIGN KML</p> <p>DRAWN DRS</p> <p>REVIEW SEPT 2016</p>
	<p>PROJECT NUMBER 468-95131</p> <p>DRAWING FILE Eng Base (SS Bubble Map)</p>	<p>FIG. JOB NO. 4782E</p> <p>DWG. SCALE</p>

