

FALCON PAVING WITH STREET IMPROVEMENTS, MASS GRADING, & INCIDENTAL STORM SEWER IMPROVEMENTS

to serve EAGLES LANDING AT NORTH OLIVER 2ND ADDITION - PHASE III CITY OF WICHITA, KANSAS

Neil Cable, P.E. City Engineer

Project Number
472-83466

O.C.A. Number
765755

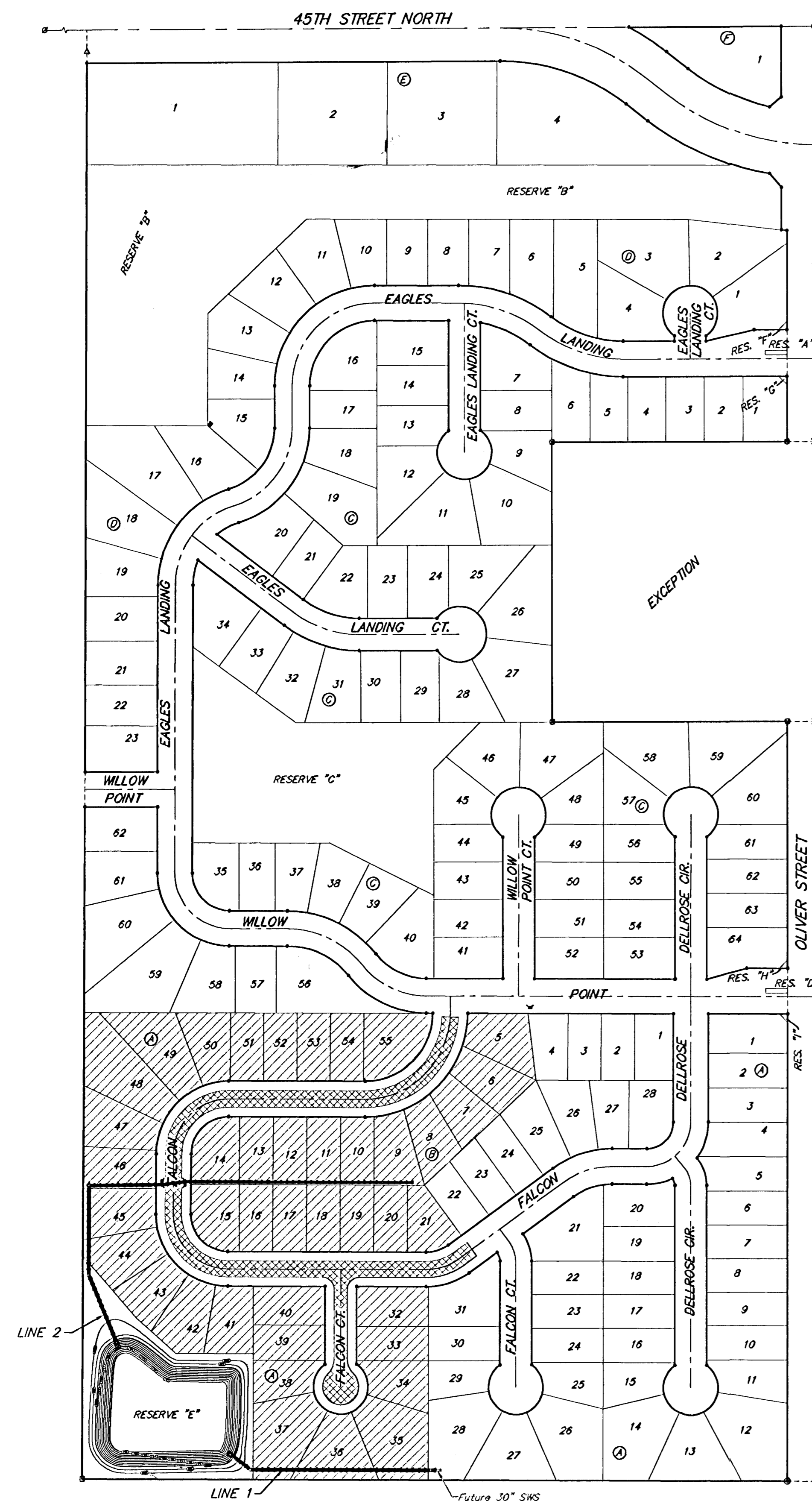
GENERAL NOTES:

1. Contractor will be required to provide notice to utility companies a minimum of twenty-four (24) hours prior to any excavation, as follows:

Kansas One-Call	687-2470
-----------------	----------

The Contractor must notify the following in case of an emergency:

Cox Communications	262-4270
Kansas Gas Service	1-888-482-4950
Westar Energy	383-8650
Aquila Energy	1-888-482-4950
Southwestern Bell	268-2245
City of Wichita Water Dept.	268-4563
City of Wichita Sewer Maint.	268-4024
City of Wichita Storm Sewer Maint.	268-4090
City of Wichita Traffic Maint.	268-4034
Conoco Pipeline Co.	1-800-231-2551
Williams Pipeline Co.	529-6600
Phillips Pipeline Co.	1-800-766-8230
2. All water mains and appurtenances shall be installed in accordance with City of Wichita, Kansas Standard Specifications for Water Main Installations No. 14533.
3. The water main shall be constructed on the alignment shown by the plans. Trees and shrubs in public right-of-way which are in direct conflict with proposed new construction shall be removed by the Contractor with the Engineer's approval. Trees and shrubs which are not in direct conflict with proposed new construction shall be saved and protected from damage. The cost for any necessary tree trimming, clearing and/or grubbing shall be included in the price bid for the installed water main pipe.
4. Opening and closing of water valves shall be done slowly to prevent damage to the water distribution system from water hammer. All valves closed by the contractor must be reopened as new construction permits. Project inspector must ascertain that any valve closed by the Contractor is reopened. Contractor will be permitted to operate water valves only when the project inspector assigned to the project is present.
5. Contractor shall not start work on the project until the project inspector is assigned to the project and is present on the site. Any work done without inspection will be required to be uncovered for inspection.
6. Underground utility service lines and overhead utility pole lines are to be adjusted as necessary by others prior to construction, unless the plans specifically call for their adjustment by the Contractor. Existing utilities and their locations, as shown on the plans, represent the best information obtainable for design. Location information has been obtained from the various utility companies and is either from company record drawings or company-provided field locations. The Contractor will be required to work around existing utilities within the right-of-way which do not conflict with proposed construction.
7. The Contractor shall be responsible for preserving property irons. The Contractor will be required to re-establish any property irons which are damaged or destroyed by his construction operations. Such irons shall be re-established by a licensed land surveyor in accordance with state law.



Sheet Index

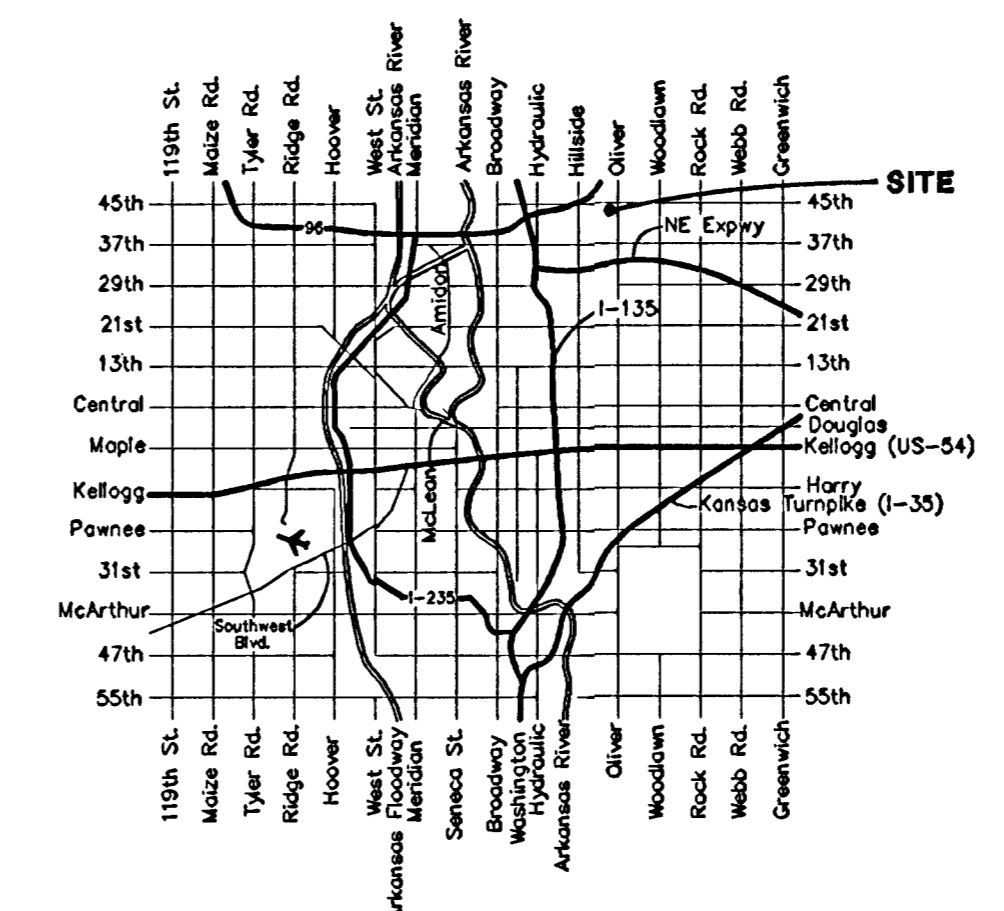
Title Sheet	1
29' Pavement Details	2
35' Pavement Details	3
Sign Details	4
Misc. Details	5
Falcon	6-7
Falcon Ct.	8
SWS Line 1	9
SWS Line 2	10-11
Std. Shallow Manhole Detail	12
Manhole Ring & Cover Detail	13
Type 1 Double Curb Inlet Detail	14
Special Yard Inlet Detail	15
Headwall Detail	16
Erosion Control Plans	17-18
Cross Sections	19-21
Copy of Plat	22

Scale: 1" = 150'

Benchmark

Oliver and 45th St. N. - Top of Brass Plate on SW Corner of R.C.B.C. East of Intersection. ELEV. = 1398.88 NGVD (211.48 City Datum)

60d Nail In H.L.P., 33' S. of the NW Corner of Gov't. Lot 1 in the NE1/4 of Sec. 26, TWP. 26-S, R-1-E of the 6th P.M. Elev. = 1377.19 NGVD (189.79 City Datum)



Vicinity Map

Benefit District

Proposed Streets

PAVEMENT EARTHWORK TOTALS (FOR REFERENCE ONLY)	
Excavation	1,125 C.Y.
Loose Fill	384 C.Y.
Compacted Fill	25 C.Y.
Total Project Length 1,265 L.F. = 0.24 Miles	

